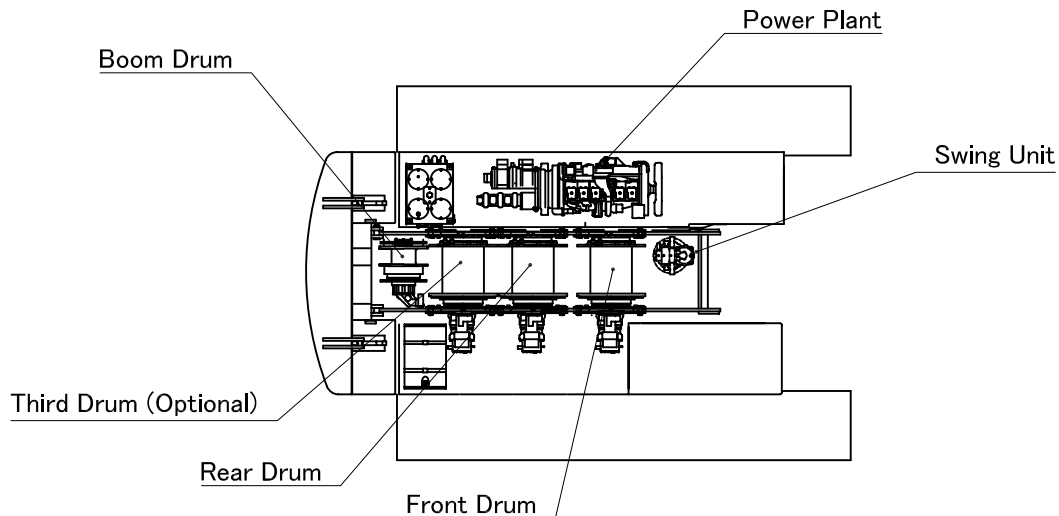
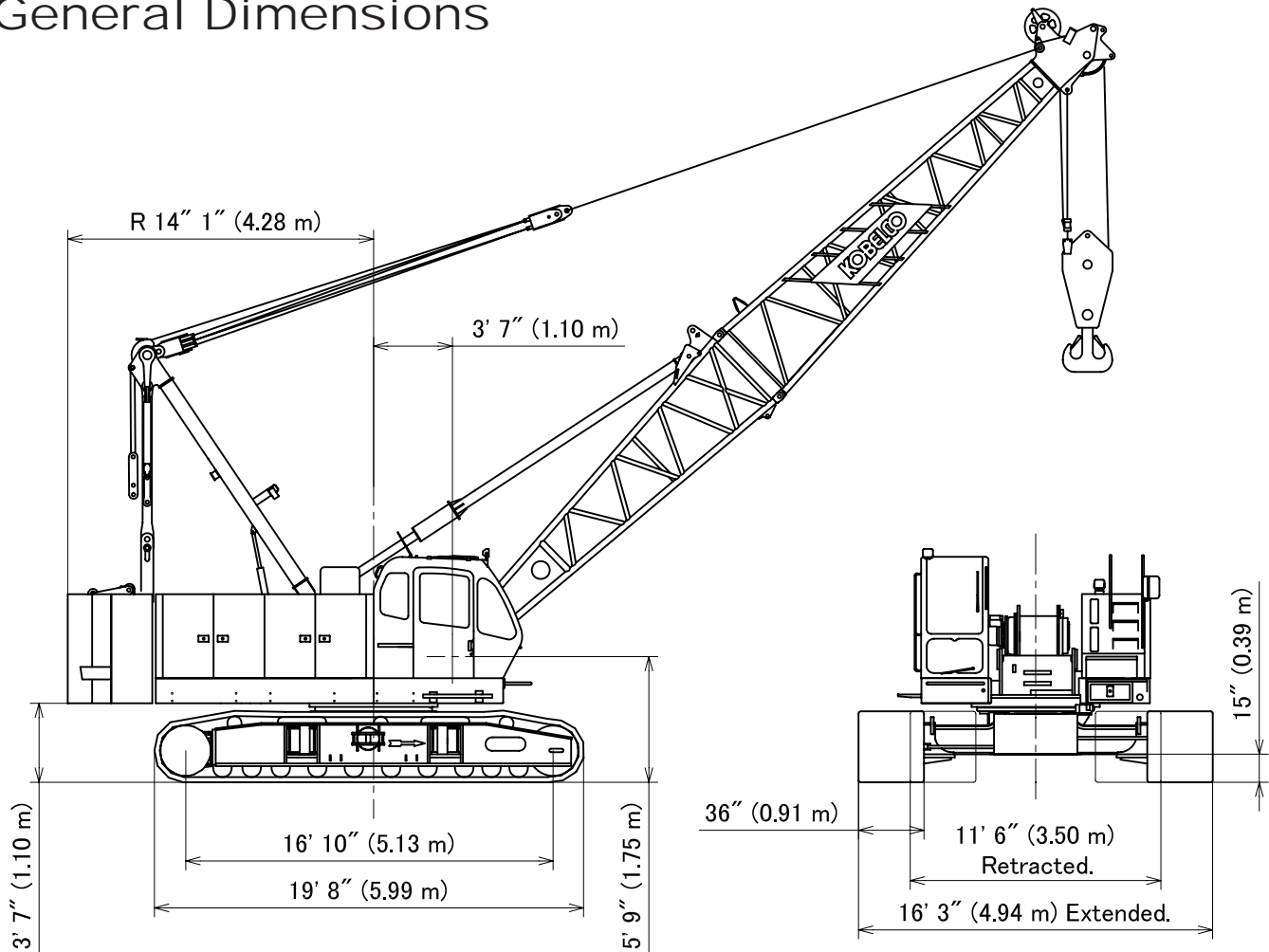




LIFTING CHARTS - Crawler Cranes

KOBELCO MODEL CK850-III - 85 TON CAPACITY

General Dimensions



STERLING CRANE

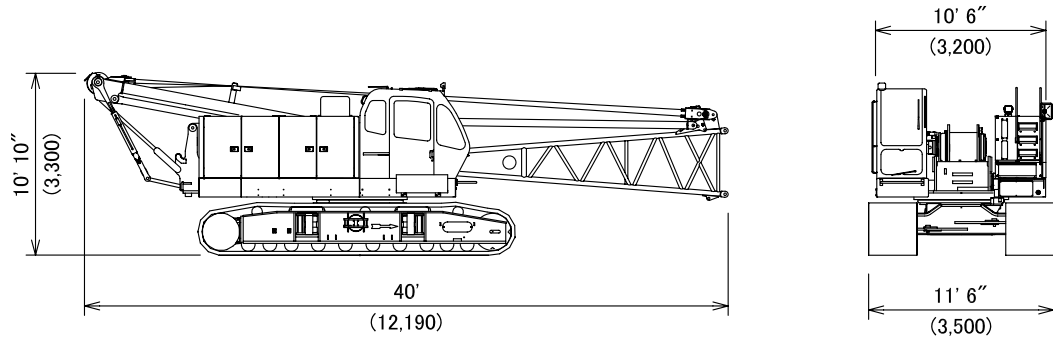
Dimensions and Weight

Base Machine -1

Weight: 89,980 lbs (40,820 kg)

Boom base, Gantry, Crawler, Wire ropes (Front, Rear and Boom hoist drums)

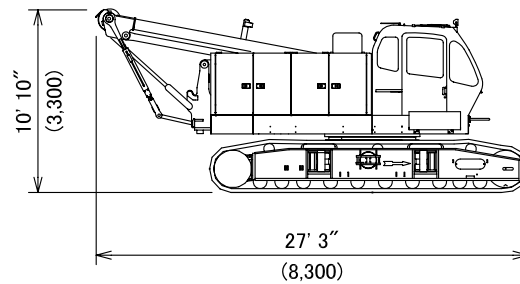
When installing optional third drum,
add 4,260 lbs (1,930 kg)



Base Machine -2

Weight: 85,350 lbs (38,700 kg)

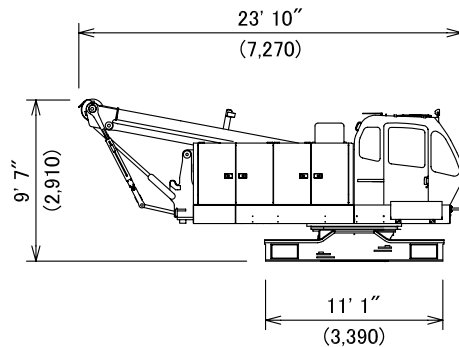
Gantry, Crawler, Wire ropes (Front, Rear and Boom hoist drums)



Base Machine -3

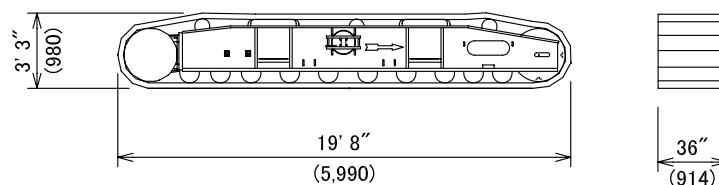
Weight: 52,500 lbs (23,800 kg)

Gantry, Wire ropes (Front, Rear and Boom hoist drums)



Crawler

Weight: 16,320 lbs (7,400 kg)

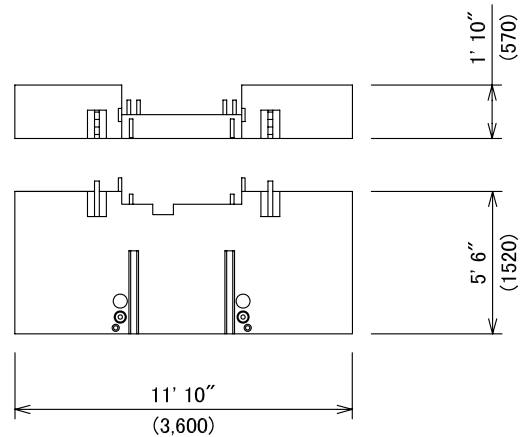


STERLING CRANE

Dimensions and Weight

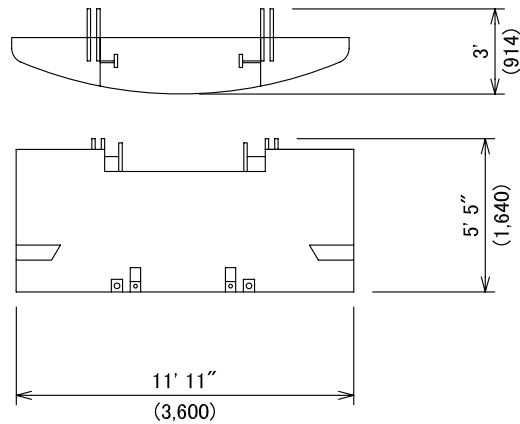
Counterweight (A)

Weight: 27,340 lbs (12,400 kg)



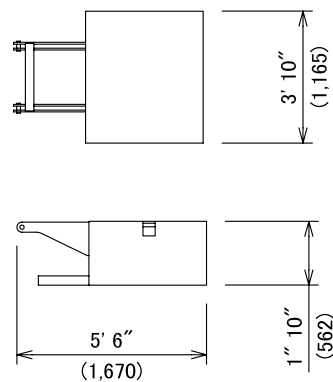
Counterweight (B)

Weight: 27,560 lbs (12,500 kg)



Carbody Weight

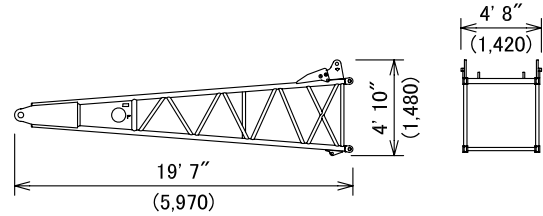
Weight: 7,360 lbs (3,340 kg)



Dimensions and Weight

Boom Base

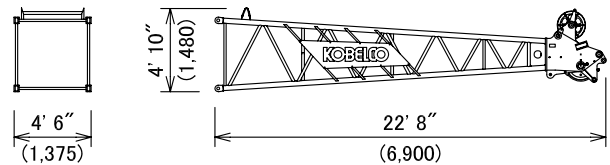
Weight: 2,230 lbs (1,010 kg)



Boom Tip

Weight: 2,380 lbs (1,080 kg)

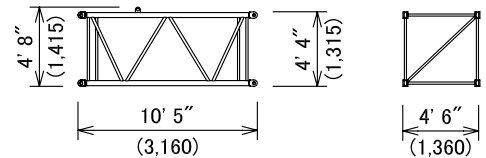
Includes cable roller and guy lines.



10 ft (3.0 m) Insert Boom

Weight: 750 lbs (340 kg)

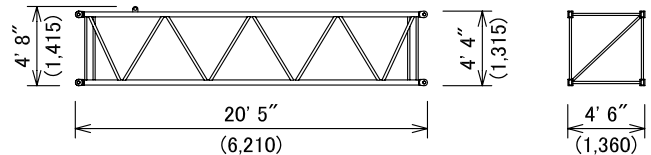
Includes cable roller and guy lines.



20 ft (6.1 m) Insert Boom

Weight: 1,230 lbs (560 kg)

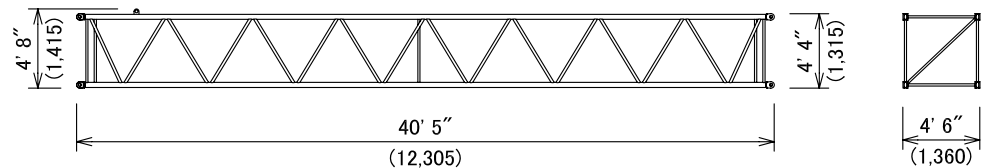
Includes cable roller and guy lines.



40 ft (12.2 m) Insert Boom

Weight: 2,190 lbs (990 kg)

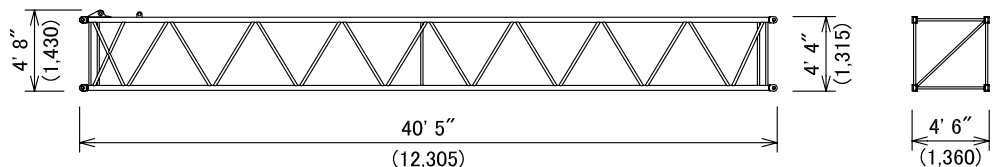
Includes cable roller and guy lines.



40 ft (12.2 m) Insert Boom (with lug)

Weight: 2,220 lbs (1,010 kg)

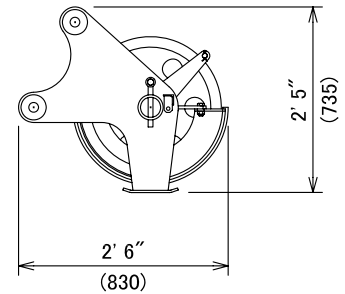
Includes cable roller and guy lines.



Dimensions and Weight

Auxiliary Sheave

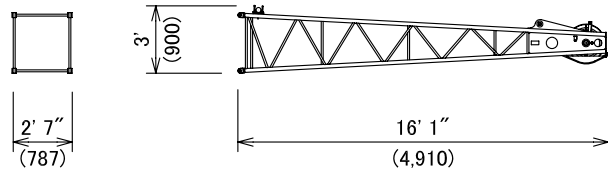
Weight: 320 lbs (145 kg)



Jib Tip

Weight: 620 lbs (280 kg)

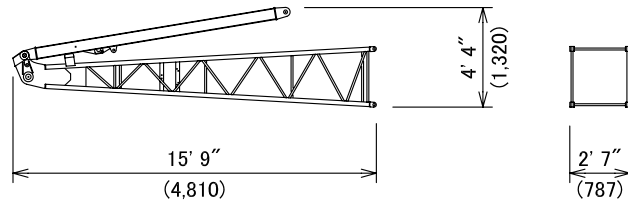
Includes cable roller.



Jib Base and Strut

Weight: 1,210 lbs (550 kg)

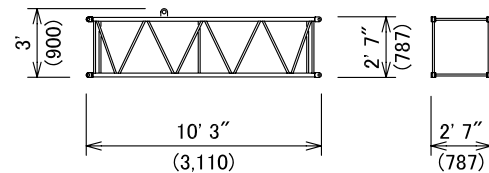
Includes guy line.



10 ft (3.0 m) Insert Jib

Weight: 290 lbs (130 kg)

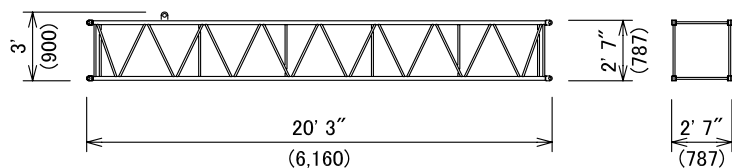
Includes cable roller and guy line.



20 ft (6.1 m) Jib Insert

Weight: 490 lbs (220 kg)

Includes cable roller and guy line.



STERLING CRANE

Transportation Plan

Shipping plan for 200 ft Boom and 60 ft Jib

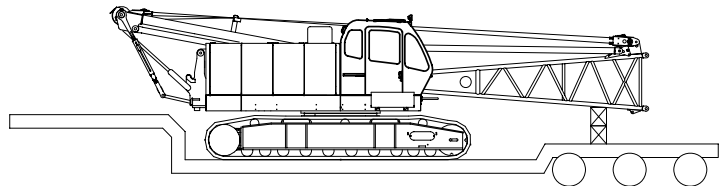
Description of Item	Weight		Trailer Loads			
	lbs	(kg)	#1	#2	#3	#4
Base Machine with Boom Base and Crawlers*	89,980	(40,820)	1			
Counterweight (A)	27,340	(12,400)		1		
Counterweight (B)	27,560	(12,500)			1	
Carbody Weight	7,360	(3,340)		1	1	
10 ft Insert Boom and Guy Line	750	(340)		1	1	
20 ft Inset Boom and Guy Line	1,230	(560)				1
40 ft Insert Boom and Guy Line	2,190	(990)		1	1	
40 ft Insert Boom (w/ Lug) and Guy Line	2,220	(1,010)				1
Boom Tip and Guy Line	2,380	(1,080)				1
Jib Base and Guy Line	1,210	(550)		1		
10 ft Inset Jib and Guy Line	290	(130)		1		
20 ft Inset Jib and Guy Line	490	(220)		1		
Jib Tip	620	(280)		1		
Approx. Total Shipping Weight		lbs (kg)	89,980 (40,820)	40,250 (18,250)	37,860 (17,170)	5,830 (2,650)

* Third drum is not included.

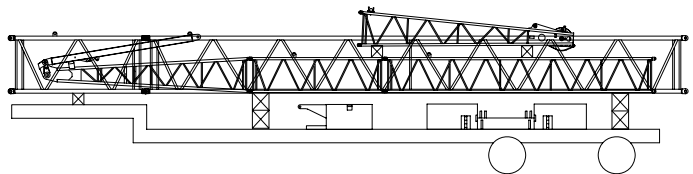
Loads for transportation were targeted at 45,000 lbs, 8' 6" wide, 48' long and 13' 6" high from ground.

This may vary depending on truck/trailer weight, style of trailer and state law.

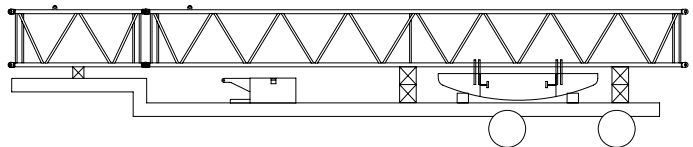
Trailer #1



Trailer #2



Trailer #3



Trailer #4

