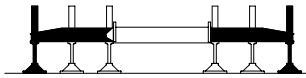




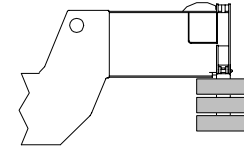
LIFTING CHARTS - Hydraulic Truck Cranes

LINK-BELT MODEL HTC-8675LB - 75 TON CAPACITY

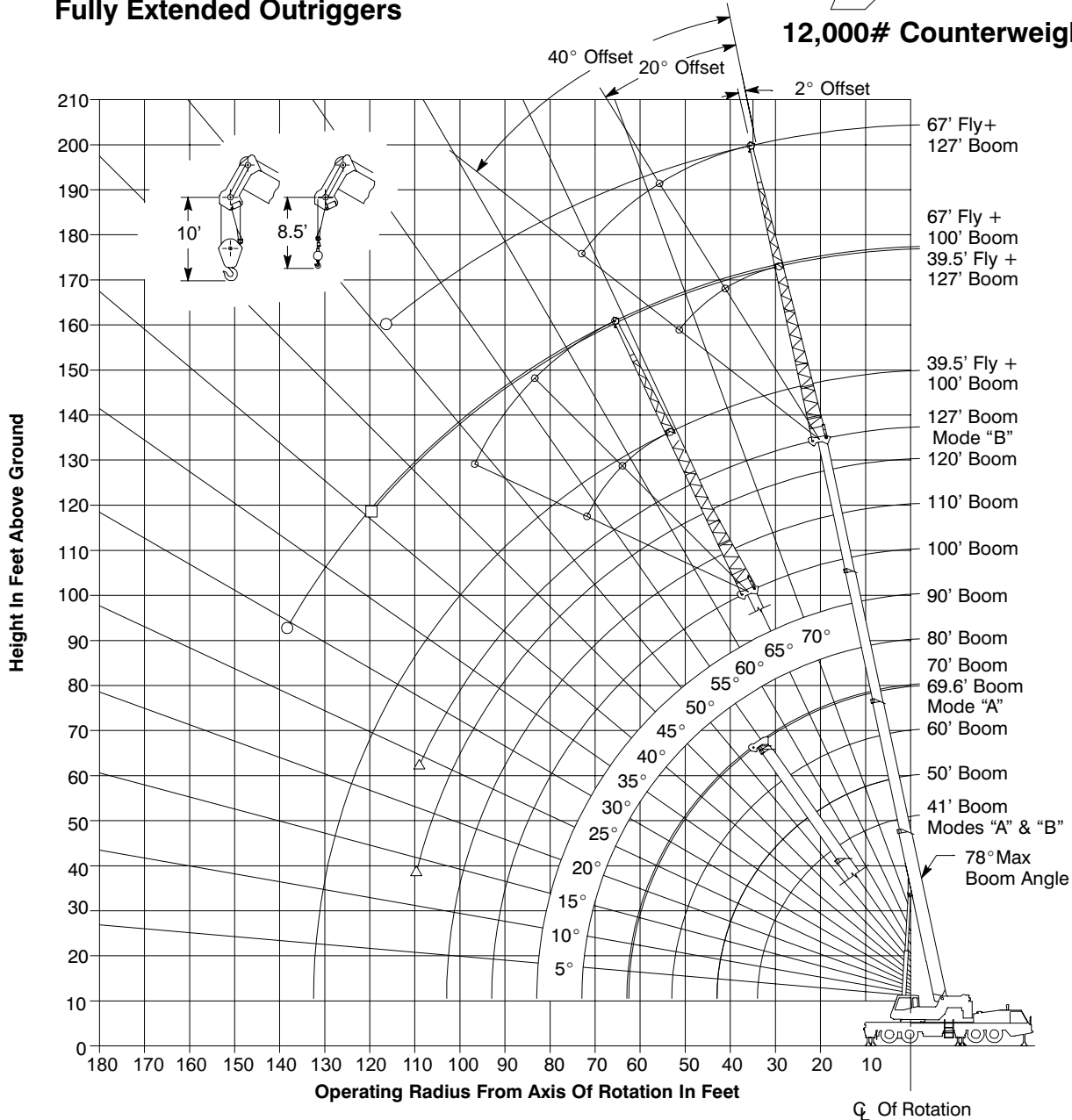
Working Range Diagram



Fully Extended Outriggers



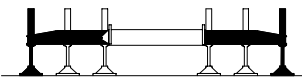
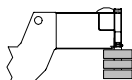
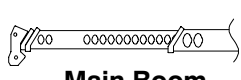
12,000# Counterweight



- Denotes Main Boom + 67' Fly—Boom Mode "B"
- Denotes Main Boom + 39.5' Fly—Boom Mode "B"
- △ Denotes Main Boom — Boom Mode "B"

Note: Boom and fly geometry shown are for unloaded condition and crane standing level on firm supporting surface. Boom deflection, subsequent radius, and boom angle change must be accounted for when applying load to hook.

STERLING CRANE

Rated Lifting Capacities In Pounds Fully Extended Outriggers See Set Up Note 2.				 Full		 12,000#		 Main Boom "A"	
Load Radius (ft)	41'			50'			Load Radius (ft)		
	\angle °	360°	Over Rear	\angle °	360°	Over Rear			
8	72.0	150,000*	150,000*				8		
9	70.5	140,000*	140,000*				9		
10	69.0	127,500	127,500	73.0	75,100	75,100	10		
12	66.0	113,600	113,600	70.5	75,100	75,100	12		
15	61.0	97,300	97,300	67.0	75,100	75,100	15		
20	52.5	73,100	73,100	60.5	72,500	72,500	20		
25	42.5	56,100	56,100	53.0	55,600	55,600	25		
30	29.0	41,900	41,900	45.5	41,300	41,300	30		
35				36.0	31,300	31,300	35		
40				23.0	24,500	24,500	40		
Min.Boom Ang/Cap.	0 (34.0)	21,100	21,100	0 (43.0)	15,900	15,900	Min.Boom Ang/Cap.		

Load Radius (ft)	60'			69.6'			Load Radius (ft)
	\angle °	360°	Over Rear	\angle °	360°	Over Rear	
10	76.5	74,000	74,000				10
12	74.5	74,000	74,000	76.5	43,900	43,900	12
15	71.5	74,000	74,000	74.5	43,900	43,900	15
20	66.0	72,000	72,000	70.0	43,900	43,900	20
25	60.5	55,200	55,200	65.5	43,900	43,900	25
30	54.5	40,600	40,600	61.0	37,900	37,900	30
35	48.5	30,800	30,800	55.5	30,400	30,400	35
40	41.0	24,200	24,200	50.5	23,800	23,800	40
45	32.5	19,300	19,300	44.5	19,000	19,000	45
50	21.0	15,500	15,500	37.5	15,300	15,300	50
55				29.5	12,500	12,500	55
60				18.5	10,100	10,100	60
Min.Boom Ang/Cap.	0 (53.0)	10,800	10,800	0 (62.6)	7,300	7,300	Min.Boom Ang/Cap.

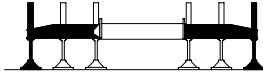
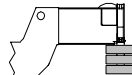
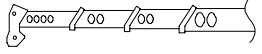
Note: Refer To Page 8 For "Lifting Capacity Deductions For Auxiliary Load Handling Equipment".

\angle Loaded Boom Angle In Degrees.

() Reference Radius For Minimum Boom Angle Capacities (Shown In Parenthesis) Are In Feet.

* Special conditions or wire rope required.

STERLING CRANE

Rated Lifting Capacities In Pounds Fully Extended Outriggers See Set Up Note 2.				 Full		 12,000#		 Main Boom "B"	
Load Radius (ft)	41'			50'			Load Radius (ft)		
	\angle °	360°	Over Rear	\angle °	360°	Over Rear			
8	72.0	150,000*	150,000*				8		
9	70.5	140,000*	140,000*				9		
10	69.0	127,500	127,500	73.0	38,000	38,000	10		
12	66.0	113,600	113,600	70.5	38,000	38,000	12		
15	61.0	97,300	97,300	67.0	38,000	38,000	15		
20	52.5	73,100	73,100	60.5	38,000	38,000	20		
25	42.5	56,100	56,100	53.0	38,000	38,000	25		
30	29.0	41,900	41,900	45.5	38,000	38,000	30		
35				36.0	32,800	32,800	35		
40				23.0	25,800	25,800	40		
Min.Bm. Ang/Cap.	0 (34.0)	21,100	21,100	0 (43.0)	14,900	14,900	Min.Bm. Ang/Cap.		
Load Radius (ft)	60'			70'			Load Radius (ft)		
	\angle °	360°	Over Rear	\angle °	360°	Over Rear			
10	76.0	38,000	38,000				10		
12	74.0	38,000	38,000	76.5	38,000	38,000	12		
15	71.0	38,000	38,000	74.5	38,000	38,000	15		
20	66.0	38,000	38,000	70.0	38,000	38,000	20		
25	60.5	38,000	38,000	65.5	38,000	38,000	25		
30	54.5	38,000	38,000	60.5	38,000	38,000	30		
35	48.0	33,300	33,300	55.5	33,600	33,600	35		
40	41.0	26,500	26,500	50.5	26,800	26,800	40		
45	32.5	21,500	21,500	44.5	21,900	21,900	45		
50	21.0	17,700	17,700	38.0	18,200	18,200	50		
55				30.0	15,200	15,200	55		
60				19.5	12,800	12,800	60		
Min.Bm. Ang/Cap.	0 (53.0)	10,500	10,500	0 (63.0)	7,600	7,600	Min.Bm. Ang/Cap.		

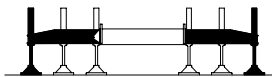
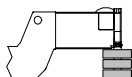
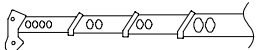
Note: Refer To Page 8 For "Lifting Capacity Deductions For Auxiliary Load Handling Equipment".

\angle ° Loaded Boom Angle In Degrees.

() Reference Radius For Minimum Boom Angle Capacities (Shown In Parenthesis) Are In Feet.

* Special conditions or wire rope required.

STERLING CRANE

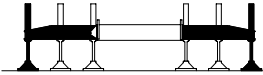
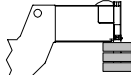
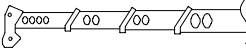
Rated Lifting Capacities In Pounds Fully Extended Outriggers See Set Up Note 2.				 Full			 12,000#			 Main Boom "B"	
Load Radius (ft)	80'			90'			100'			Load Radius (ft)	
	\angle °	360°	Over Rear	\angle °	360°	Over Rear	\angle °	360°	Over Rear		
15	76.5	38,000	38,000							15	
20	73.0	38,000	38,000	75.0	38,000	38,000	77.0	37,400	37,400	20	
25	69.5	38,000	38,000	72.0	38,000	38,000	74.0	32,700	32,700	25	
30	65.0	38,000	38,000	68.5	37,900	37,900	71.0	29,000	29,000	30	
35	61.0	33,800	33,800	65.0	33,900	33,900	68.0	26,000	26,000	35	
40	56.5	27,000	27,000	61.5	27,200	27,200	65.0	23,400	23,400	40	
45	52.0	22,200	22,200	57.5	22,300	22,300	61.5	21,200	21,200	45	
50	47.0	18,400	18,400	53.5	18,600	18,600	58.0	18,700	18,700	50	
55	41.5	15,500	15,500	49.0	15,600	15,600	54.5	15,800	15,800	55	
60	35.5	13,100	13,100	44.5	13,300	13,300	50.5	13,400	13,400	60	
65	28.0	11,200	11,200	39.5	11,400	11,400	46.5	11,500	11,600	65	
70	18.0	9,500	9,500	33.5	9,700	9,800	42.0	9,800	9,900	70	
75				26.5	8,300	8,400	37.5	8,400	8,500	75	
80				17.0	7,000	7,100	32.0	7,200	7,300	80	
85							25.5	6,100	6,300	85	
90							16.5	5,200	5,300	90	
Min.Bm. Ang/ Cap.	0 (73.0)	5,500	5,500	0 (83.0)	3,900	3,900	0 (93.0)	2,700	2,700	Min.Bm. Ang/ Cap.	

Note: Refer To Page 8 For "Lifting Capacity Deductions For Auxiliary Load Handling Equipment".

\angle ° Loaded Boom Angle In Degrees.

() Reference Radius For Minimum Boom Angle Capacities (Shown In Parenthesis) Are In Feet.

STERLING CRANE

Rated Lifting Capacities In Pounds Fully Extended Outriggers See Set Up Note 2.				 Full			 12,000#		 Main Boom "B"	
Load Radius (ft)	110'			120'			127'			Load Radius (ft)
	\angle°	360°	Over Rear	\angle°	360°	Over Rear	\angle°	360°	Over Rear	
25	76.0	29,400	29,400	77.5	23,300	23,300	78.0*	19,600	19,600	25
30	73.5	26,200	26,200	75.0	23,300	23,300	76.0	19,600	19,600	30
35	70.5	23,500	23,500	72.5	21,500	21,500	74.0	19,600	19,600	35
40	68.0	21,200	21,200	70.0	19,400	19,400	71.5	18,400	18,400	40
45	65.0	19,200	19,200	67.5	17,600	17,600	69.0	16,400	16,400	45
50	62.0	17,400	17,400	65.0	15,800	15,800	66.5	14,900	14,900	50
55	59.0	15,800	15,800	62.0	14,400	14,400	64.0	13,600	13,600	55
60	55.5	13,500	13,500	59.5	13,200	13,200	61.5	12,500	12,500	60
65	52.0	11,600	11,600	56.5	11,700	11,700	59.0	11,500	11,500	65
70	48.5	9,900	10,000	53.0	10,000	10,100	56.0	10,000	10,100	70
75	44.5	8,500	8,600	50.0	8,600	8,700	53.0	8,600	8,800	75
80	40.5	7,300	7,500	46.5	7,300	7,500	50.0	7,400	7,600	80
85	36.0	6,200	6,400	43.0	6,300	6,500	46.5	6,300	6,500	85
90	30.5	5,300	5,500	39.0	5,400	5,600	43.0	5,400	5,600	90
95	24.5	4,500	4,700	34.5	4,600	4,800	39.5	4,600	4,800	95
100	16.0	3,700	3,900	29.5	3,800	4,100	35.5	3,900	4,100	100
105				23.5	3,200	3,400	31.0	3,200	3,500	105
110				15.5	2,600	2,800	25.5	2,700	2,900	110
Min.Bm. Ang/ Cap.	0 (103.0)	1,700	1,700	13.5 (110.9)			24.0 (111.2)			Min.Bm. Ang/ Cap.

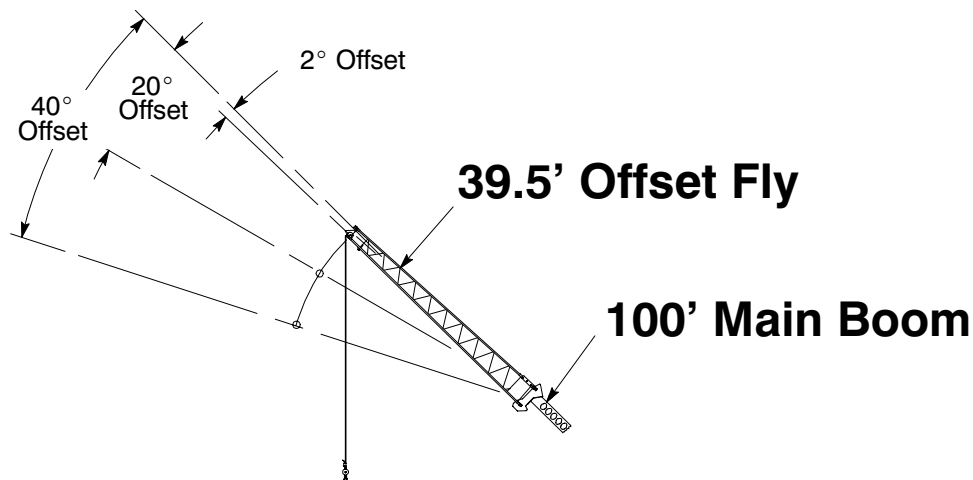
Note: Refer To Page 8 For "Lifting Capacity Deductions For Auxiliary Load Handling Equipment".

\angle° Loaded Boom Angle In Degrees.

() Reference Radius For Minimum Boom Angle Capacities (Shown In Parenthesis) Are In Feet.

* This capacity based on maximum obtainable boom angle.

STERLING CRANE

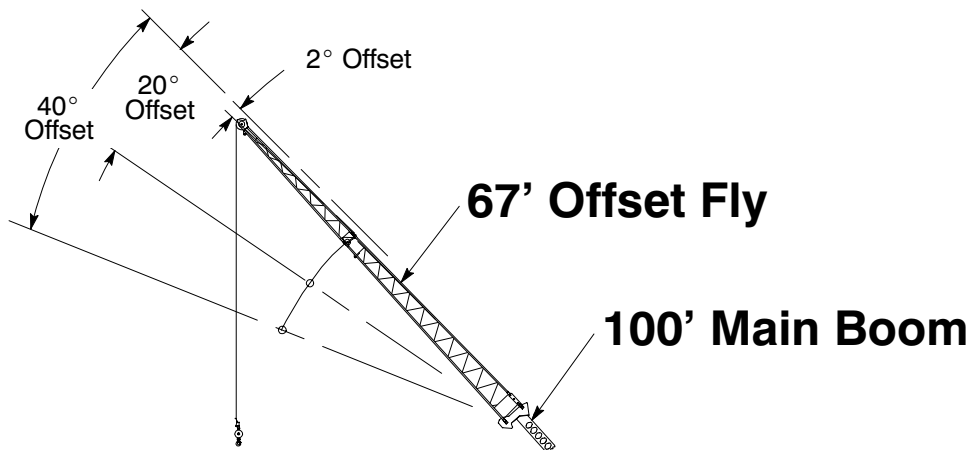


Rated Lifting Capacities In Pounds Fully Extended Outriggers See Set Up Note 2.		Full				12,000#	
		2° Offset		20° Offset		40° Offset	
Load Radius (ft)	∠°		∠°		∠°		Load Radius (ft)
	∠°	360°	∠°	360°	∠°	360°	
30	77.0	13,900					30
35	75.0	13,400					35
40	73.0	12,800					40
45	71.0	12,200	76.0	9,400			45
50	69.0	11,700	74.0	8,900			50
55	67.0	11,100	71.5	8,500	76.0	6,600	55
60	64.5	10,600	69.5	8,100	73.5	6,400	60
65	62.5	10,100	67.0	7,800	71.0	6,300	65
70	60.0	9,700	64.5	7,400	68.5	6,100	70
75	57.5	9,200	62.0	7,200	66.0	6,000	75
80	55.0	8,700	59.5	6,900	63.5	5,800	80
85	52.0	7,800	57.0	6,600	60.5	5,700	85
90	49.5	6,800	54.0	6,400	57.5	5,600	90
95	46.0	6,000	51.5	6,200	54.5	5,500	95
100	43.0	5,200	48.0	5,800	51.5	5,500	100
105	39.5	4,600	44.5	5,100	47.5	5,400	105
110	36.0	4,000	41.0	4,400	43.5	4,600	110
115	32.0	3,500	36.5	3,800	38.5	4,000	115
120	27.5	3,000	31.5	3,300			120
125	21.5	2,600	25.5	2,700			125
130	14.0	2,200					130
Min.Boom Ang/Cap.	0	600	0	600	0	700	Min.Boom Ang/Cap.

Note: Refer To Page 8 For "Lifting Capacity Deductions For Auxiliary Load Handling Equipment".

∠ Loaded Boom Angle In Degrees.

STERLING CRANE



Load Radius (ft)		2° Offset		20° Offset		40° Offset		Load Radius (ft)
		\angle°	360°	\angle°	360°	\angle°	360°	
40	77.0	8,300						40
45	75.5	7,900						45
50	73.5	7,500						50
55	72.0	7,100						55
60	70.0	6,600	77.0	4,700				60
65	68.5	6,200	75.5	4,500				65
70	66.5	5,800	73.5	4,200				70
75	64.5	5,500	71.5	4,000				75
80	62.5	5,200	69.5	3,900	76.0	3,000		80
85	60.5	4,900	67.5	3,700	74.0	3,000		85
90	58.5	4,600	65.5	3,500	72.0	2,900		90
95	56.5	4,400	63.5	3,400	69.5	2,800		95
100	54.5	4,200	61.5	3,300	67.5	2,700		100
105	52.0	3,900	59.0	3,200	65.0	2,700		105
110	50.0	3,800	57.0	3,100	62.5	2,600		110
115	47.5	3,600	54.5	3,000	60.0	2,600		115
120	45.0	3,400	52.0	2,900	57.0	2,500		120
125	42.5	3,200	49.0	2,800	54.0	2,500		125
130	39.5	2,800	46.5	2,700	50.5	2,500		130
135	36.0	2,400	43.0	2,600	47.0	2,500		135
140	33.0	2,100	39.5	2,500	42.5	2,500		140
145			35.5	2,100				145
150			30.5	1,800				150

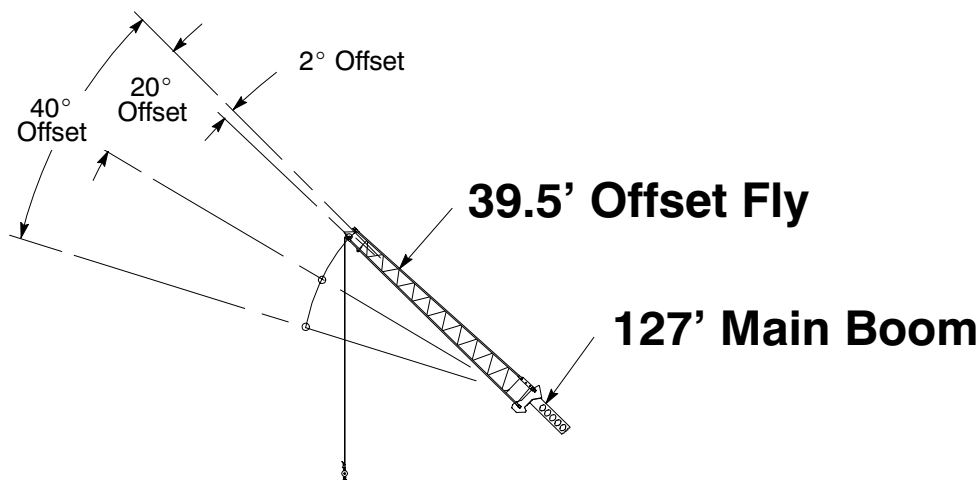
⚠ WARNING

Do Not Lower 67' Offset Fly In Working Position Below 29.5° Main Boom Angle Unless Main Boom Length Is 92' Or Less, Since Loss Of Stability Will Occur Causing A Tipping Condition.

Note: Refer To Page 8 For "Lifting Capacity Deductions For Auxiliary Load Handling Equipment".

\angle° Loaded Boom Angle In Degrees.

STERLING CRANE



Rated Lifting Capacities In Pounds Fully Extended Outriggers See Set Up Note 2.		Full				12,000#		Load Radius (ft)
		2° Offset		20° Offset		40° Offset		
Load Radius (ft)	2° Offset		20° Offset		40° Offset		Load Radius (ft)	
	\angle°	360°	\angle°	360°	\angle°	360°		
35	78.0*	8,300					35	
40	76.5	8,300					40	
45	75.0	8,300					45	
50	73.5	8,300	78.0*	8,200			50	
55	71.5	8,300	76.0	8,000			55	
60	70.0	8,300	74.5	7,800			60	
65	68.5	8,300	72.5	7,600	76.0	6,200	65	
70	67.0	8,300	71.0	7,400	74.5	6,100	70	
75	65.0	7,800	69.0	7,200	72.5	6,000	75	
80	63.0	7,100	67.0	7,000	70.5	5,800	80	
85	60.5	6,600	65.5	6,800	68.5	5,700	85	
90	58.5	6,000	63.0	6,300	66.5	5,700	90	
95	56.5	5,600	61.0	5,800	64.0	5,600	95	
100	54.0	4,900	58.5	5,300	62.0	5,500	100	
105	51.5	4,200	56.5	4,900	59.5	5,100	105	
110	49.0	3,600	53.5	4,200	57.0	4,600	110	
115	46.5	3,100	51.0	3,600	54.0	4,000	115	
120	44.0	2,600	48.0	3,100	51.0	3,400	120	
125			45.5	2,600	48.0	2,900	125	
130			42.0	2,200	44.5	2,400	130	

WARNING

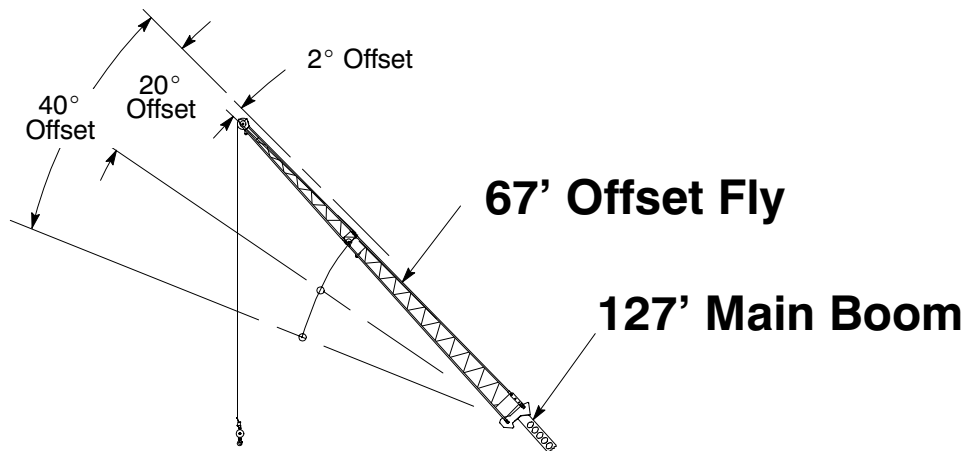
Do Not Lower 39.5' Offset Fly In Working Position Below 40.5° Main Boom Angle Unless Main Boom Length Is 100' Or Less, Since Loss Of Stability Will Occur Causing A Tipping Condition.

Note: Refer To Page 8 For "Lifting Capacity Deductions For Auxiliary Load Handling Equipment".

\angle° Loaded Boom Angle In Degrees.

* This capacity based on maximum obtainable boom angle.

STERLING CRANE



Rated Lifting Capacities In Pounds Fully Extended Outriggers See Set Up Note 2.		Full		12,000#		Load Radius (ft)	
		2° Offset		20° Offset			40° Offset
Load Radius (ft)	2° Offset		20° Offset		40° Offset		Load Radius (ft)
	\angle	360°	\angle	360°	\angle	360°	
50	76.5	5,500					50
55	75.5	5,500					55
60	74.0	5,500					60
65	73.0	5,500					65
70	71.5	5,500	77.5	4,200			70
75	70.0	5,300	76.0	4,000			75
80	68.5	5,100	74.5	3,900			80
85	67.0	4,900	73.0	3,800			85
90	65.5	4,800	71.5	3,600	77.0	2,900	90
95	64.0	4,600	70.0	3,500	75.0	2,800	95
100	62.0	4,300	68.0	3,400	73.5	2,800	100
105	60.5	3,900	66.5	3,300	71.5	2,700	105
110	58.5	3,600	64.5	3,200	70.0	2,600	110
115	56.5	3,200	63.0	3,100	68.0	2,600	115
120	54.5	2,900	61.0	3,000	66.0	2,600	120
125	52.5	2,700	59.0	2,900	64.0	2,500	125
130			57.0	2,600	61.5	2,500	130
135			54.5	2,300	59.5	2,500	135
140			52.5	2,100	57.0	2,300	140
145					54.5	2,000	145
150					51.5	1,800	150



WARNING

Do Not Lower 67' Offset Fly In Working Position Below 50.5° Main Boom Angle Unless Main Boom Length Is 92' Or Less, Since Loss Of Stability Will Occur Causing A Tipping Condition.

Note: Refer To Page 8 For "Lifting Capacity Deductions For Auxiliary Load Handling Equipment".

\angle Loaded Boom Angle In Degrees.