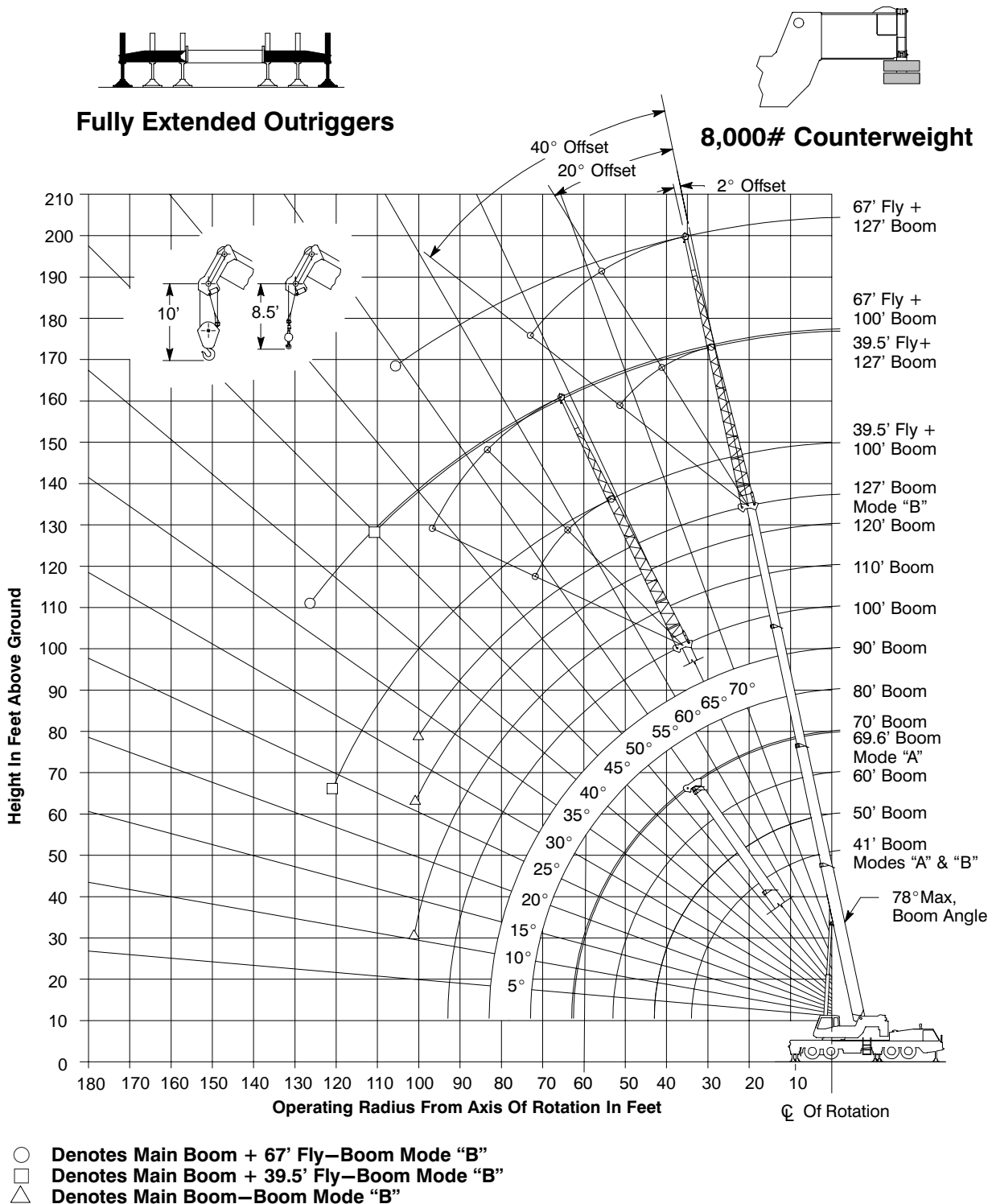




LIFTING CHARTS - Hydraulic Truck Cranes

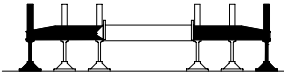
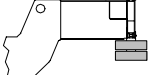
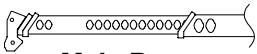
LINK-BELT MODEL HTC-8675LB - 75 TON CAPACITY

## Working Range Diagram



**Note:** Boom and fly geometry shown are for unloaded condition and crane standing level on firm supporting surface. Boom deflection, subsequent radius, and boom angle change must be accounted for when applying load to hook.

# STERLING CRANE

Rated Lifting Capacities In Pounds Fully Extended Outriggers See Set Up Note 2.				 Full		 8,000#		 Main Boom "A"	
Load Radius (ft)	41'			50'			Load Radius (ft)		
	$\angle$ °	360°	Over Rear	$\angle$ °	360°	Over Rear			
10	69.0	124,600	124,600	73.0	75,100	75,100	10		
12	66.0	111,000	111,000	70.5	75,100	75,100	12		
15	61.0	95,000	95,000	67.0	75,100	75,100	15		
20	52.5	70,600	70,600	60.5	70,000	70,000	20		
25	42.5	53,600	53,600	53.0	52,700	52,700	25		
30	29.0	38,400	38,400	45.5	37,800	37,800	30		
35				36.0	28,500	28,500	35		
40				23.0	22,100	22,100	40		
Min.Boom Ang/Cap.	0 (34.0)	21,100	21,100	0 (43.0)	15,900	15,900	Min.Boom Ang/Cap.		

Load Radius (ft)	60'			69.6'			Load Radius (ft)
	$\angle$ °	360°	Over Rear	$\angle$ °	360°	Over Rear	
10	76.5	74,000	74,000				10
12	74.5	74,000	74,000	76.5	43,900	43,900	12
15	71.5	74,000	74,000	74.5	43,900	43,900	15
20	66.0	69,500	69,500	70.0	43,900	43,900	20
25	60.5	51,900	51,900	65.5	43,900	43,900	25
30	54.5	37,200	37,200	60.5	36,700	36,700	30
35	48.5	28,000	28,000	55.5	27,600	27,600	35
40	41.0	21,800	21,800	50.0	21,500	21,500	40
45	32.5	17,200	17,200	44.5	17,000	17,000	45
50	21.0	13,700	13,700	37.5	13,400	13,500	50
55				29.5	10,700	10,900	55
60				18.5	8,400	8,700	60
Min.Boom Ang/Cap.	0 (53.0)	10,800	10,800	0 (62.6)	7,300	7,300	Min.Boom Ang/Cap.

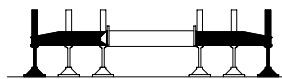
**Note:** Refer To Page 8 For "Lifting Capacity Deductions For Auxiliary Load Handling Equipment".

$\angle$  ° Loaded Boom Angle In Degrees.

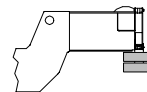
( ) Reference Radius For Minimum Boom Angle Capacities (Shown In Parenthesis) Are In Feet.

# STERLING CRANE

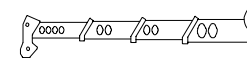
**Rated Lifting Capacities In Pounds  
Fully Extended Outriggers  
See Set Up Note 2.**



**Full**



**8,000#**



**Main Boom  
"B"**

Load Radius (ft)	41'			50'			Load Radius (ft)
	$\angle$ °	360°	Over Rear	$\angle$ °	360°	Over Rear	
10	69.0	124,600	124,600	73.0	38,000	38,000	10
12	66.0	111,000	111,000	70.5	38,000	38,000	12
15	61.0	95,000	95,000	67.0	38,000	38,000	15
20	52.5	70,600	70,600	60.5	38,000	38,000	20
25	42.5	53,600	53,600	53.0	38,000	38,000	25
30	29.0	38,400	38,400	45.0	38,000	38,000	30
35				36.0	29,900	29,900	35
40				23.0	23,500	23,500	40
Min.Bm. Ang/Cap.	0 (34.0)	21,100	21,100	0 (43.0)	14,900	14,900	Min.Bm. Ang/Cap.

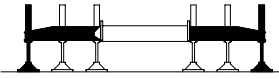
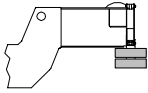
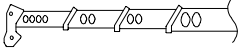
Load Radius (ft)	60'			70'			Load Radius (ft)
	$\angle$ °	360°	Over Rear	$\angle$ °	360°	Over Rear	
10	76.0	38,000	38,000				10
12	74.0	38,000	38,000	76.5	38,000	38,000	12
15	71.0	38,000	38,000	74.5	38,000	38,000	15
20	66.0	38,000	38,000	70.0	38,000	38,000	20
25	60.5	38,000	38,000	65.5	38,000	38,000	25
30	54.5	38,000	38,000	60.5	38,000	38,000	30
35	48.0	30,500	30,500	55.5	30,800	30,800	35
40	41.0	24,200	24,200	50.5	24,500	24,500	40
45	32.5	19,500	19,500	44.5	19,900	19,900	45
50	21.0	15,900	15,900	38.0	16,400	16,400	50
55				30.0	13,600	13,600	55
60				19.0	11,300	11,400	60
Min.Bm. Ang/Cap.	0 (53.0)	10,500	10,500	0 (63.0)	7,600	7,600	Min.Bm. Ang/Cap.

**Note: Refer To Page 8 For "Lifting Capacity Deductions For Auxiliary Load Handling Equipment".**

$\angle$  ° Loaded Boom Angle In Degrees.

( ) Reference Radius For Minimum Boom Angle Capacities (Shown In Parenthesis) Are In Feet.

# STERLING CRANE

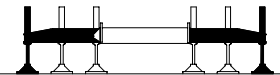
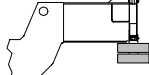
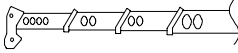
Rated Lifting Capacities In Pounds Fully Extended Outriggers See Set Up Note 2.				 Full			 8,000#			 Main Boom "B"	
Load Radius (ft)	80'			90'			100'			Load Radius (ft)	
	$\Delta^\circ$	360°	Over Rear	$\Delta^\circ$	360°	Over Rear	$\Delta^\circ$	360°	Over Rear		
15	76.5	38,000	38,000							15	
20	73.0	38,000	38,000	75.0	38,000	38,000	77.0	37,400	37,400	20	
25	69.5	38,000	38,000	72.0	38,000	38,000	74.0	32,700	32,700	25	
30	65.0	38,000	38,000	68.5	37,900	37,900	71.0	29,000	29,000	30	
35	61.0	31,000	31,000	65.0	31,200	31,200	68.0	26,000	26,000	35	
40	56.5	24,700	24,700	61.0	24,900	24,900	65.0	23,400	23,400	40	
45	52.0	20,100	20,100	57.5	20,300	20,300	61.5	20,400	20,400	45	
50	47.0	16,600	16,600	53.0	16,800	16,800	58.0	16,900	16,900	50	
55	41.5	13,800	13,900	49.0	14,000	14,100	54.5	14,100	14,200	55	
60	35.5	11,500	11,700	44.5	11,700	11,900	50.5	11,800	12,100	60	
65	28.0	9,700	9,900	39.0	9,800	10,100	46.5	10,000	10,200	65	
70	18.0	8,100	8,300	33.5	8,300	8,600	42.0	8,400	8,700	70	
75				26.5	6,900	7,200	37.5	7,100	7,400	75	
80				17.0	5,800	6,100	32.0	5,900	6,300	80	
85							25.5	5,000	5,300	85	
90							16.5	4,100	4,400	90	
Min.Bm. Ang/ Cap.	0 (73.0)	5,500	5,500	0 (83.0)	3,900	3,900	0(93.0)	2,700	2,700	Min.Bm. Ang/ Cap.	

Note: Refer To Page 8 For "Lifting Capacity Deductions For Auxiliary Load Handling Equipment".

$\Delta^\circ$  Loaded Boom Angle In Degrees.

( ) Reference Radius For Minimum Boom Angle Capacities (Shown In Parenthesis) Are In Feet.

# STERLING CRANE

Rated Lifting Capacities In Pounds Fully Extended Outriggers See Set Up Note 2.				 Full			 8,000#		 Main Boom "B"	
Load Radius (ft)	110'			120'			127'			Load Radius (ft)
	$\angle$ °	360°	Over Rear	$\angle$ °	360°	Over Rear	$\angle$ °	360°	Over Rear	
25	76.0	29,400	29,400	77.5	23,300	23,300	78.0*	19,600	19,600	25
30	73.5	26,200	26,200	75.0	23,300	23,300	76.0	19,600	19,600	30
35	70.5	23,500	23,500	72.5	21,500	21,500	74.0	19,600	19,600	35
40	68.0	21,200	21,200	70.0	19,400	19,400	71.5	18,400	18,400	40
45	65.0	19,200	19,200	67.5	17,600	17,600	69.0	16,400	16,400	45
50	62.0	17,000	17,000	65.0	15,800	15,800	66.5	14,900	14,900	50
55	58.5	14,200	14,200	62.0	14,200	14,300	64.0	13,600	13,600	55
60	55.5	11,900	12,100	59.0	12,000	12,200	61.5	12,100	12,300	60
65	52.0	10,100	10,300	56.0	10,100	10,400	58.5	10,200	10,400	65
70	48.0	8,500	8,800	53.0	8,600	8,900	56.0	8,600	8,900	70
75	44.5	7,200	7,500	49.5	7,200	7,600	53.0	7,300	7,600	75
80	40.5	6,000	6,400	46.5	6,100	6,500	49.5	6,200	6,500	80
85	35.5	5,100	5,400	42.5	5,100	5,500	46.5	5,200	5,600	85
90	30.5	4,200	4,600	38.5	4,300	4,700	43.0	4,300	4,700	90
95	24.5	3,500	3,800	34.5	3,600	3,900	39.5	3,600	4,000	95
100	16.0	2,800	3,100	29.5	2,900	3,200	35.5	2,900	3,300	100
Min.Bm. Ang/ Cap.	10.5 (101.9)			26.0 (102.8)			32.5 (103.1)			Min.Bm. Ang/ Cap.

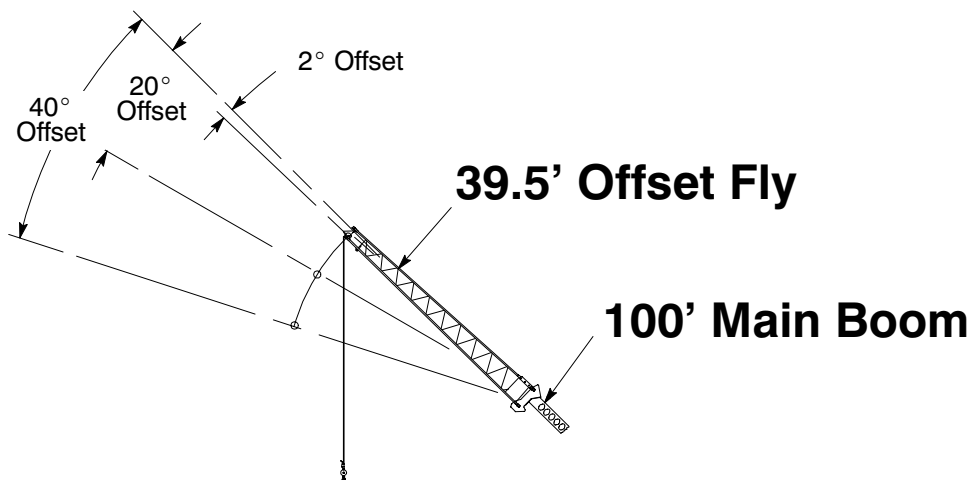
Note: Refer To Page 8 For "Lifting Capacity Deductions For Auxiliary Load Handling Equipment".

$\angle$  ° Loaded Boom Angle In Degrees.

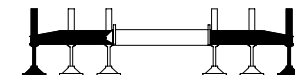
( ) Reference Radius For Minimum Boom Angle Capacities (Shown In Parenthesis) Are In Feet.

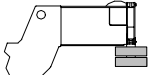
\* This capacity based on maximum obtainable boom angle.

# STERLING CRANE



**Rated Lifting Capacities In Pounds Fully Extended Outriggers See Set Up Note 2.**

 **Full**

 **8,000#**

Load Radius (ft)	2° Offset		20° Offset		40° Offset		Load Radius (ft)
	$\angle^\circ$	360°	$\angle^\circ$	360°	$\angle^\circ$	360°	
30	77.0	13,900					30
35	75.0	13,400					35
40	73.0	12,800					40
45	71.0	12,200	76.0	9,400			45
50	69.0	11,700	74.0	8,900			50
55	67.0	11,100	71.5	8,500	76.0	6,600	55
60	64.5	10,600	69.5	8,100	73.5	6,400	60
65	62.5	10,100	67.0	7,800	71.0	6,300	65
70	60.0	9,700	64.5	7,400	68.5	6,100	70
75	57.5	8,800	62.0	7,200	66.0	6,000	75
80	54.5	7,600	59.5	6,900	63.5	5,800	80
85	52.0	6,600	57.0	6,600	60.5	5,700	85
90	49.0	5,700	54.0	6,400	57.5	5,600	90
95	46.0	5,000	51.0	5,600	54.5	5,500	95
100	42.5	4,300	48.0	4,900	51.0	5,200	100
105	39.5	3,700	44.5	4,200	47.5	4,500	105
110	35.5	3,100	40.5	3,600	43.0	3,800	110
115	31.5	2,700	36.5	3,000			115
120	27.0	2,200	31.5	2,500			120
125			25.5	2,000			125

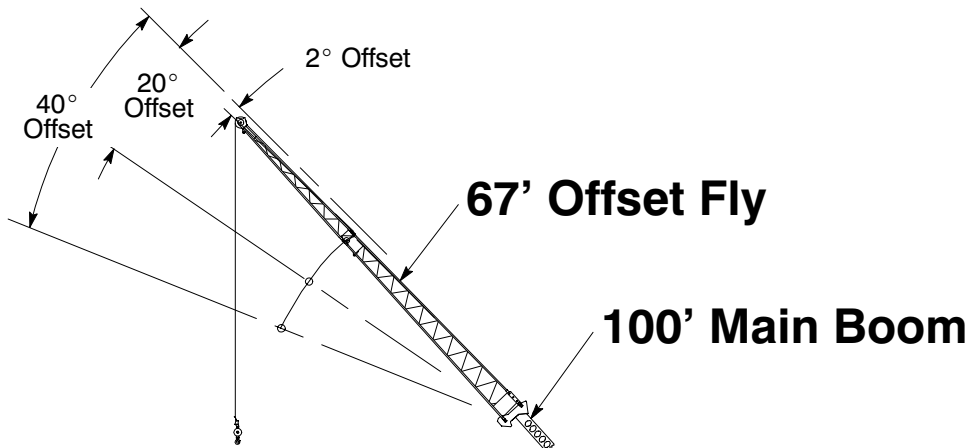
**⚠ WARNING**

**Do Not Lower 39.5' Offset Fly In Working Position Below 23.5° Main Boom Angle Unless Main Boom Length Is 92' Or Less, Since Loss Of Stability Will Occur Causing A Tipping Condition.**

**Note: Refer To Page 8 For "Lifting Capacity Deductions For Auxiliary Load Handling Equipment".**

$\angle^\circ$  **Loaded Boom Angle In Degrees.**

# STERLING CRANE



Rated Lifting Capacities In Pounds Fully Extended Outriggers See Set Up Note 2.		Full		8,000#			
Load Radius (ft)	2° Offset		20° Offset		40° Offset		Load Radius (ft)
	$\angle^\circ$	360°	$\angle^\circ$	360°	$\angle^\circ$	360°	
40	77.0	8,300					40
45	75.5	7,900					45
50	73.5	7,500					50
55	72.0	7,100					55
60	70.0	6,600	77.0	4,700			60
65	68.5	6,200	75.5	4,500			65
70	66.5	5,800	73.5	4,200			70
75	64.5	5,500	71.5	4,000			75
80	62.5	5,200	69.5	3,900	76.0	3,000	80
85	60.5	4,900	67.5	3,700	74.0	3,000	85
90	58.5	4,600	65.5	3,500	72.0	2,900	90
95	56.5	4,400	63.5	3,400	69.5	2,800	95
100	54.5	4,200	61.5	3,300	67.5	2,700	100
105	52.0	3,900	59.0	3,200	65.0	2,700	105
110	50.0	3,800	57.0	3,100	62.5	2,600	110
115	47.5	3,400	54.5	3,000	60.0	2,600	115
120	44.5	2,900	52.0	2,900	57.0	2,500	120
125	42.0	2,500	49.0	2,800	54.0	2,500	125
130	39.0	2,100	46.5	2,700	50.5	2,500	130
135			43.0	2,300	47.0	2,500	135
140			39.5	1,900	42.5	2,100	140



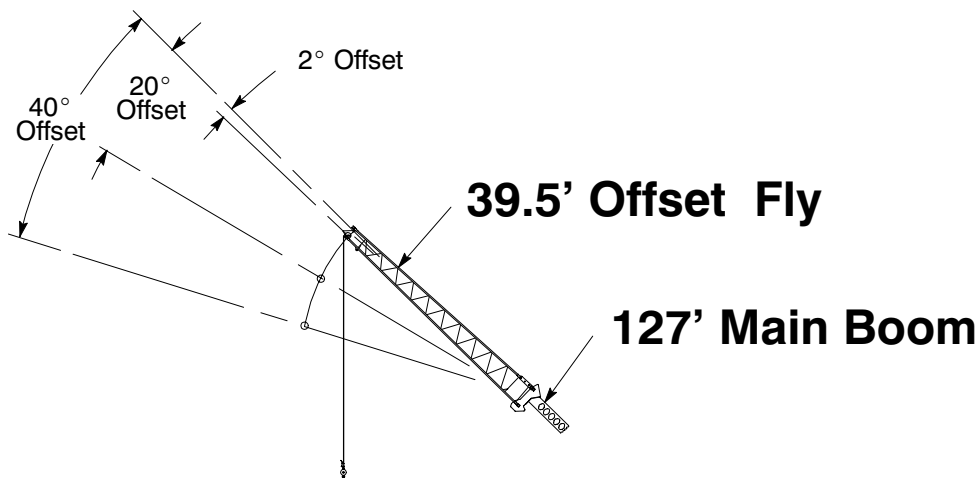
## WARNING

Do Not Lower 67' Offset Fly In Working Position Below 37° Main Boom Angle Unless Main Boom Length Is 85' Or Less, Since Loss Of Stability Will Occur Causing A Tipping Condition.

Note: Refer To Page 8 For "Lifting Capacity Deductions For Auxiliary Load Handling Equipment".

$\angle^\circ$  Loaded Boom Angle In Degrees.

# STERLING CRANE



Rated Lifting Capacities In Pounds Fully Extended Outriggers See Set Up Note 2.		Full		8,000#		Load Radius (ft)	
Load Radius (ft)	2° Offset		20° Offset		40° Offset		
	$\angle$ °	360°	$\angle$ °	360°	$\angle$ °	360°	
35	78.0*	8,300					35
40	76.5	8,300					40
45	75.0	8,300					45
50	73.5	8,300	78.0*	8,200			50
55	71.5	8,300	76.0	8,000			55
60	70.0	8,300	74.5	7,800			60
65	68.5	8,300	72.5	7,600	76.0	6,200	65
70	67.0	8,300	71.0	7,400	74.5	6,100	70
75	65.0	7,800	69.0	7,200	72.5	6,000	75
80	63.0	7,100	67.0	7,000	70.5	5,800	80
85	60.5	6,200	65.5	6,800	68.5	5,700	85
90	58.5	5,400	63.0	6,200	66.5	5,700	90
95	56.0	4,600	60.5	5,400	64.0	5,600	95
100	53.5	3,900	58.5	4,600	62.0	5,200	100
105	51.5	3,300	56.0	4,000	59.0	4,400	105
110	49.0	2,800	53.5	3,400	56.5	3,800	110
115	46.0	2,300	50.5	2,800	53.5	3,200	115
120			48.0	2,300	50.5	2,600	120
125					47.5	2,100	125



## WARNING

Do Not Lower 39.5' Offset Fly In Working Position Below 45° Main Boom Angle Unless Main Boom Length Is 92' Or Less, Since Loss Of Stability Will Occur Causing A Tipping Condition.

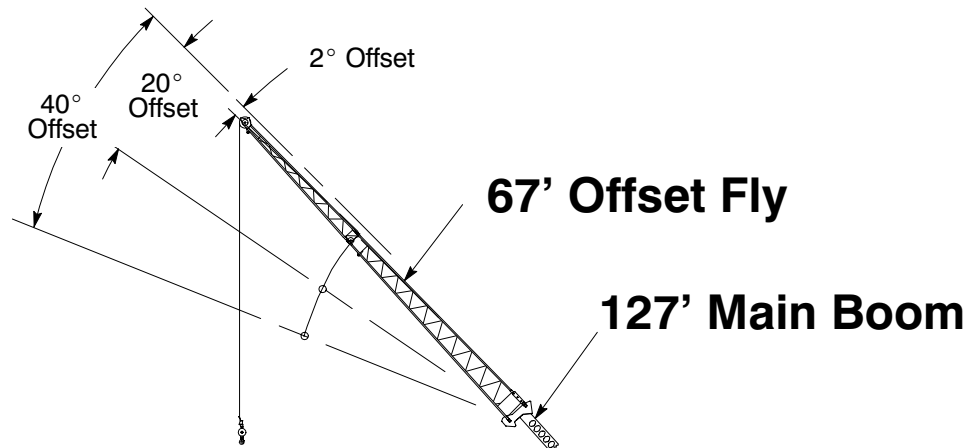
Note: Refer To Page 8 For "Lifting Capacity Deductions For Auxiliary Load Handling Equipment".

$\angle$  Loaded Boom Angle In Degrees.

\* This capacity based on maximum obtainable boom angle.



# STERLING CRANE



Rated Lifting Capacities In Pounds Fully Extended Outriggers See Set Up Note 2.		Full		8,000#		Load Radius (ft)	
		2° Offset		20° Offset			40° Offset
Load Radius (ft)	2° Offset		20° Offset		40° Offset		Load Radius (ft)
	$\angle^{\circ}$	360°	$\angle^{\circ}$	360°	$\angle^{\circ}$	360°	
50	76.5	5,500					50
55	75.5	5,500					55
60	74.0	5,500					60
65	73.0	5,500					65
70	71.5	5,500	77.5	4,200			70
75	70.0	5,300	76.0	4,000			75
80	68.5	5,100	74.5	3,900			80
85	67.0	4,900	73.0	3,800			85
90	65.5	4,800	71.5	3,600	77.0	2,900	90
95	64.0	4,600	70.0	3,500	75.0	2,800	95
100	62.0	4,300	68.0	3,400	73.5	2,800	100
105	60.5	3,900	66.5	3,300	71.5	2,700	105
110	58.5	3,400	64.5	3,200	70.0	2,600	110
115	56.5	2,900	63.0	3,100	68.0	2,600	115
120			61.0	3,000	66.0	2,600	120
125			59.0	2,800	64.0	2,500	125
130			57.0	2,400	61.5	2,500	130
135					59.5	2,500	135
140					57.0	2,000	140

## ⚠ WARNING

Do Not Lower 67' Offset Fly In Working Position Below 54.5° Main Boom Angle Unless Main Boom Length Is 85' Or Less, Since Loss Of Stability Will Occur Causing A Tipping Condition.

Note: Refer To Page 8 For "Lifting Capacity Deductions For Auxiliary Load Handling Equipment".

$\angle^{\circ}$  Loaded Boom Angle In Degrees.