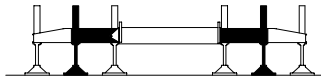




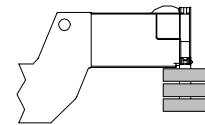
LIFTING CHARTS - Hydraulic Truck Cranes

LINK-BELT MODEL HTC-8675LB - 75 TON CAPACITY

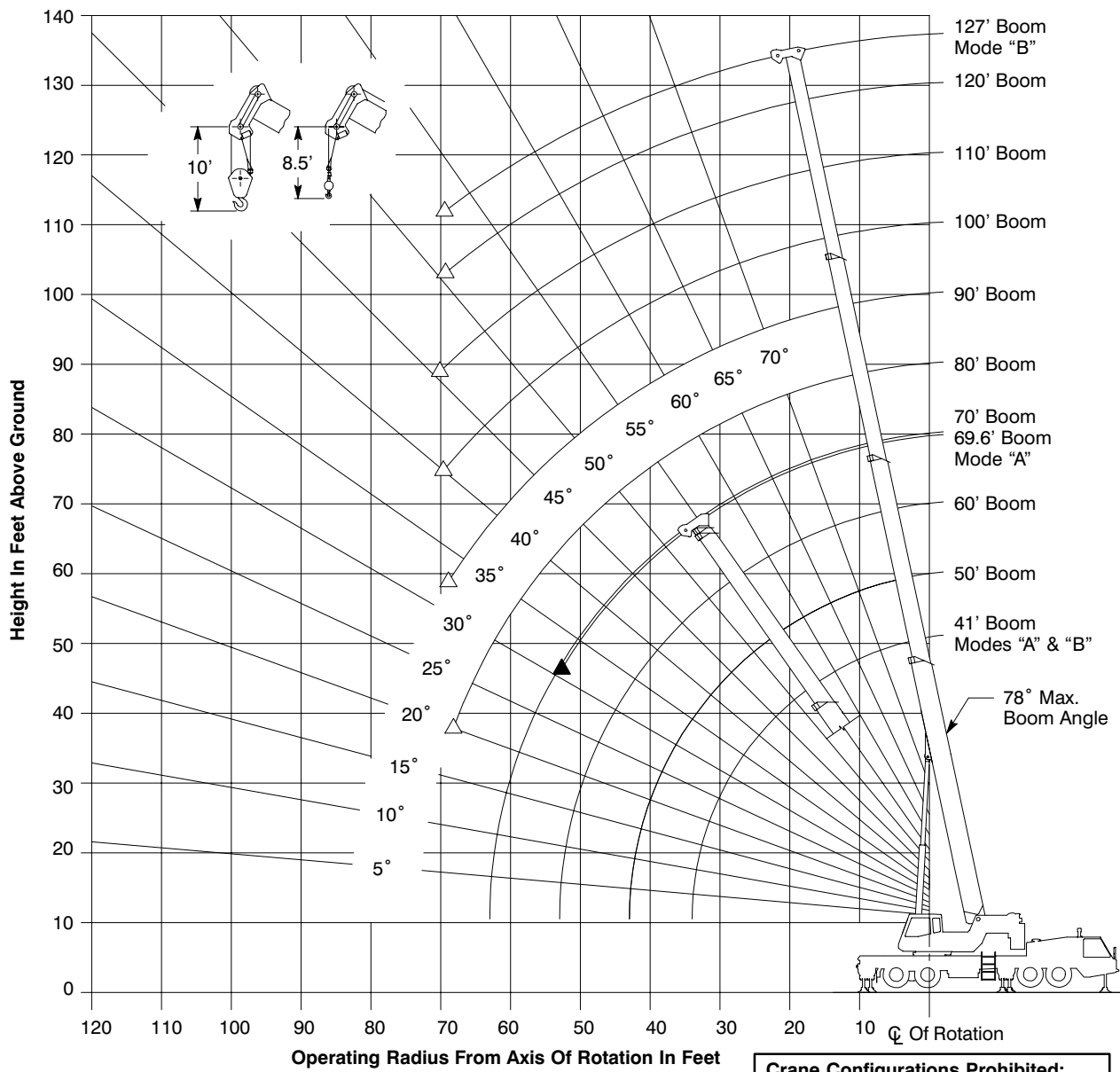
Working Range Diagram



Intermediate Extended Outriggers



12,000# Counterweight



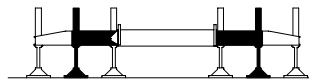
▲ Denotes Main Boom—Boom Mode "A"
 △ Denotes Main Boom—Boom Mode "B"

Crane Configurations Prohibited:
 39.5' Offset Fly
 67' Offset Fly

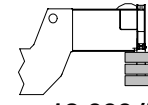
Note: Boom geometry shown is for unloaded condition and crane standing level on firm supporting surface. Boom deflection, subsequent radius, and boom angle change must be accounted for when applying load to hook.

STERLING CRANE

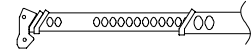
**Rated Lifting Capacities In Pounds
Intermediate Extended Outriggers
See Set Up Note 2.**



Intermediate



12,000#



**Main Boom
"A"**

Load Radius (ft)	41'		50'		Load Radius (ft)
	\angle °	360°	\angle °	360°	
10	69.0	117,700	73.0	75,100	10
12	66.0	103,400	70.5	75,100	12
15	61.0	79,800	67.0	75,100	15
20	52.5	44,600	60.5	43,600	20
25	42.0	29,000	53.0	28,300	25
30	29.0	20,200	45.0	19,700	30
35			36.0	14,100	35
40			23.0	10,200	40
Min.Boom Ang/Cap.	0 (34.0)	15,300	0 (43.0)	8,200	Min.Boom Ang/Cap.

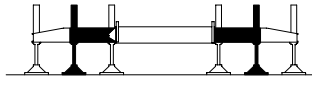
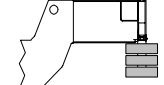
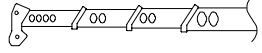
Load Radius (ft)	60'		69.6'		Load Radius (ft)
	\angle °	360°	\angle °	360°	
10	76.5	74,000			10
12	74.5	74,000	76.5	43,900	12
15	71.5	74,000	74.5	43,900	15
20	66.0	42,800	70.0	42,200	20
25	60.5	27,700	65.0	27,200	25
30	54.5	19,200	60.5	18,800	30
35	48.0	13,800	55.5	13,400	35
40	41.0	9,900	50.0	9,700	40
45	32.5	7,000	44.0	6,800	45
50	21.0	4,800	37.5	4,700	50
Min.Boom Ang/Cap.	0 (53.0)	3,600	31.0 (54.2)		Min.Boom Ang/Cap.

Note: Refer To Page 8 For "Capacity Deductions For Auxiliary Load Handling Equipment".

\angle ° Loaded Boom Angle In Degrees.

() Reference Radius For Minimum Boom Angle Capacities (Shown In Parenthesis) Are In Feet.

STERLING CRANE

Rated Lifting Capacities In Pounds Intermediate Extended Outriggers See Set Up Note 2.					
	 Intermediate		 12,000#		 Main Boom "B"
Load Radius (ft)	41'		50'		Load Radius (ft)
	\angle°	360°	\angle°	360°	
10	69.0	117,700	73.0	38,000	10
12	66.0	103,400	70.5	38,000	12
15	61.0	79,800	67.0	38,000	15
20	52.5	44,600	60.0	38,000	20
25	42.0	29,000	53.0	29,900	25
30	29.0	20,200	45.0	21,100	30
35			36.0	15,400	35
40			23.0	11,500	40
Min.Boom Ang/Cap.	0 (34.0)	15,300	0 (43.0)	9,500	Min.Boom Ang/Cap.

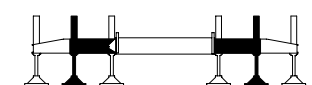
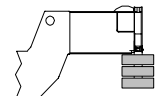
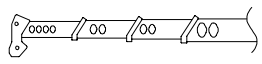
Load Radius (ft)	60'		70'		Load Radius (ft)
	\angle°	360°	\angle°	360°	
10	76.0	38,000		38,000	10
12	74.0	38,000	76.5	38,000	12
15	71.0	38,000	74.5	38,000	15
20	66.0	38,000	70.0	38,000	20
25	60.5	30,400	65.0	30,700	25
30	54.5	21,700	60.5	22,000	30
35	48.0	16,100	55.5	16,400	35
40	41.0	12,200	50.0	12,600	40
45	32.5	9,200	44.0	9,700	45
50	20.5	7,000	37.5	7,400	50
55			30.0	5,600	55
60			19.0	4,200	60
Min.Boom Ang/Cap.	0 (53.0)	5,800	0 (63.0)	3,400	Min.Boom Ang/Cap.

Note: Refer To Page 8 For "Capacity Deductions For Auxiliary Load Handling Equipment".

\angle° Loaded Boom Angle In Degrees.

() Reference Radius For Minimum Boom Angle Capacities (Shown In Parenthesis) Are In Feet.

STERLING CRANE

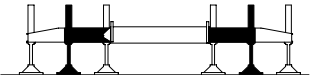
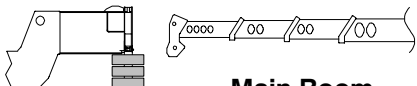
Rated Lifting Capacities In Pounds Intermediate Extended Outriggers See Set Up Note 2.							
 Intermediate				 12,000#		 Main Boom "B"	
Load Radius (ft)	80'		90'		100'		Load Radius (ft)
	\angle °	360°	\angle °	360°	\angle °	360°	
15	76.5	38,000					15
20	73.0	38,000	75.0	38,000	77.0	37,400	20
25	69.0	30,900	71.5	31,100	74.0	31,200	25
30	64.5	22,300	68.0	22,400	71.0	22,500	30
35	60.5	16,700	64.5	16,800	67.5	16,900	35
40	56.0	12,800	60.5	12,900	64.0	13,000	40
45	51.5	10,000	57.0	10,100	61.0	10,300	45
50	46.5	7,700	53.0	8,000	57.5	8,100	50
55	41.5	6,000	48.5	6,200	54.0	6,300	55
60	35.0	4,500	44.0	4,700	50.0	4,900	60
65	28.0	3,300	39.0	3,500	46.0	3,700	65
70					41.5	2,700	70
Min.Boom Ang/Cap.	20.0 (69.2)		32.5 (70.6)		40.0 (71.7)		Min.Boom Ang/Cap.

Note: Refer To Page 8 For "Capacity Deductions For Auxiliary Load Handling Equipment".

\angle ° Loaded Boom Angle In Degrees.

() Reference Radius For Minimum Boom Angle Capacities (Shown In Parenthesis) Are In Feet.

STERLING CRANE

Rated Lifting Capacities In Pounds Intermediate Extended Outriggers See Set Up Note 2.							
	 Intermediate				 12,000# Main Boom "B"		
Load Radius (ft)	110'		120'		127'		Load Radius (ft)
	\angle°	360°	\angle°	360°	\angle°	360°	
25	76.0	29,400	77.5	23,300	78.0*	19,600	25
30	73.0	22,600	75.0	22,700	76.0	19,600	30
35	70.0	17,000	72.5	17,100	73.5	17,100	35
40	67.0	13,100	69.5	13,200	71.0	13,200	40
45	64.0	10,400	67.0	10,400	68.5	10,500	45
50	61.0	8,200	64.0	8,200	66.0	8,300	50
55	58.0	6,400	61.0	6,500	63.0	6,500	55
60	54.5	5,000	58.5	5,100	60.5	5,100	60
65	51.0	3,800	55.5	3,900	57.5	4,000	65
70	47.5	2,800	52.0	2,900	55.0	3,000	70
Min.Boom Ang/Cap.	45.5 (72.5)		50.5 (72.7)		53.0 (73.1)		Min.Boom Ang/Cap.

Note: Refer To Page 8 For "Capacity Deductions For Auxiliary Load Handling Equipment".

\angle° Loaded Boom Angle In Degrees.

() Reference Radius For Minimum Boom Angle Capacities (Shown In Parenthesis) Are In Feet.

* This Capacity Based On Maximum Obtainable Boom Angle.