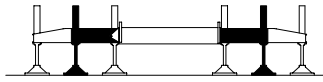




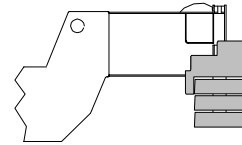
LIFTING CHARTS - Hydraulic Truck Cranes

LINK-BELT MODEL HTC-8675LB - 75 TON CAPACITY

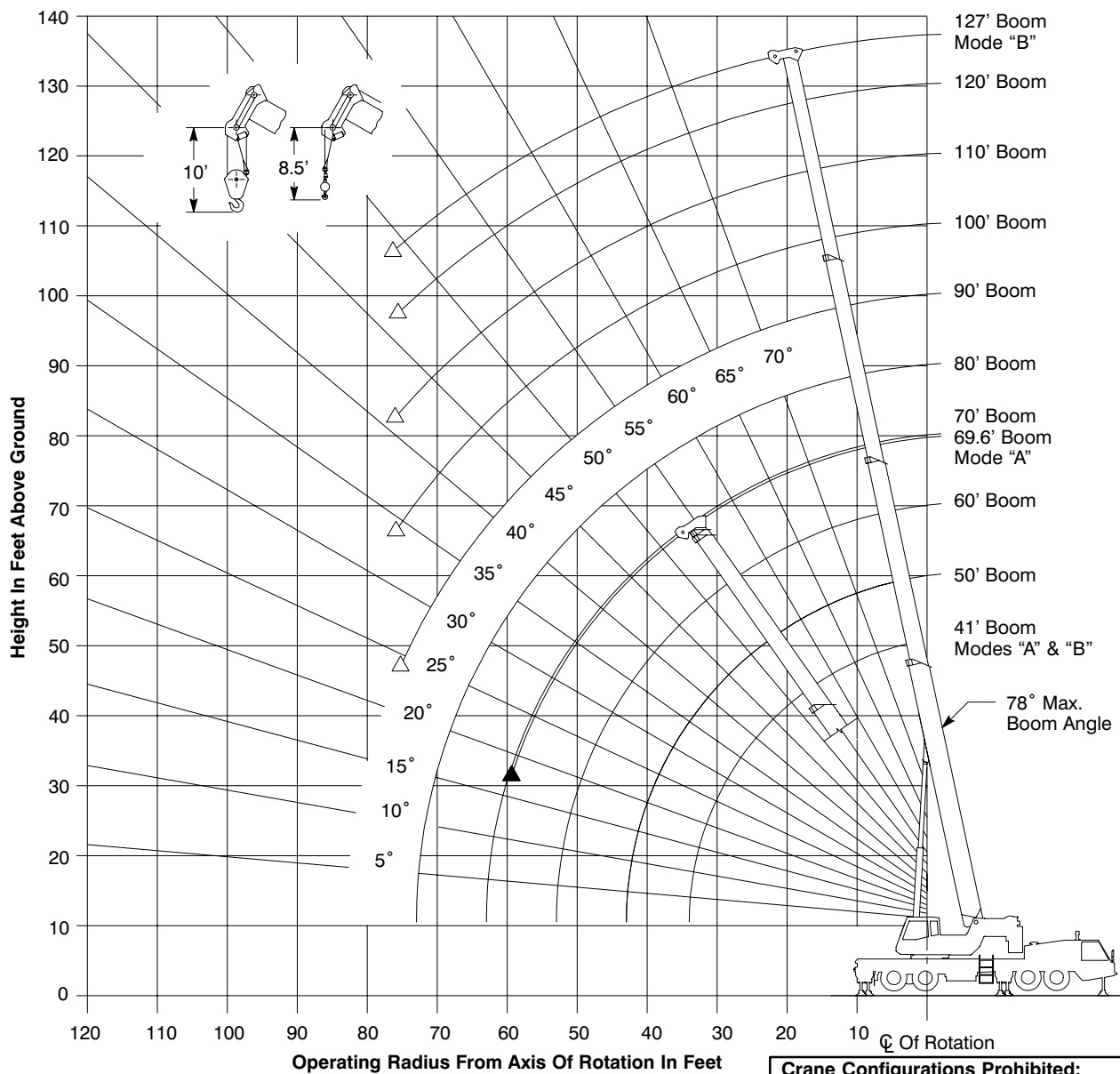
## Working Range Diagram



Intermediate  
Extended Outriggers



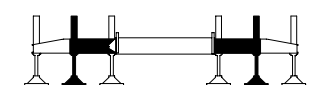
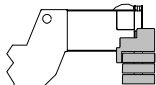
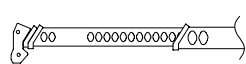
16,000# Counterweight



- ▲ Denotes Main Boom-Boom Mode "A"
- △ Denotes Main Boom-Boom Mode "B"

Note: Boom geometry shown is for unloaded condition and crane standing level on firm supporting surface. Boom deflection, subsequent radius, and boom angle change must be accounted for when applying load to hook.

# STERLING CRANE

Rated Lifting Capacities In Pounds Intermediate Extended Outriggers See Set Up Note 2.					
	 Intermediate		 16,000#		 Main Boom "A"
Load Radius (ft)	41'		50'		Load Radius (ft)
	$\angle^{\circ}$	360°	$\angle^{\circ}$	360°	
10	69.0	120,700	73.0	75,100	10
12	66.0	106,000	70.5	75,100	12
15	61.0	88,100	67.0	75,100	15
20	52.5	49,600	60.5	48,600	20
25	42.0	32,600	53.0	31,900	25
30	29.0	23,000	45.0	22,500	30
35			36.0	16,400	35
40			23.0	12,100	40
Min.Boom Ang/Cap.	0 (34.0)	17,700	0 (43.0)	10,000	Min.Boom Ang/Cap.

Load Radius (ft)	60'		69.6'		Load Radius (ft)
	$\angle^{\circ}$	360°	$\angle^{\circ}$	360°	
10	76.5	74,000			10
12	74.5	74,000	76.5	43,900	12
15	71.5	74,000	74.5	43,900	15
20	66.0	47,800	70.0	43,900	20
25	60.5	31,300	65.5	30,800	25
30	54.5	22,000	60.5	21,600	30
35	48.0	16,100	55.5	15,700	35
40	41.0	11,900	50.0	11,600	40
45	32.5	8,700	44.0	8,500	45
50	21.0	6,300	37.5	6,200	50
55			29.5	4,300	55
Min.Boom Ang/Cap.	0 (53.0)	5,000	17.5 (60.3)		Min.Boom Ang/Cap.

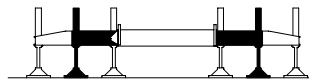
**Note: Refer To Page 8 For "Capacity Deductions For Auxiliary Load Handling Equipment".**

$\angle^{\circ}$  Loaded Boom Angle In Degrees.

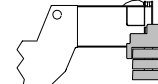
( ) Reference Radius For Minimum Boom Angle Capacities (Shown In Parenthesis) Are In Feet.

# STERLING CRANE

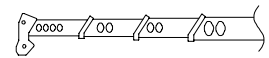
**Rated Lifting Capacities In Pounds  
Intermediate Extended Outriggers  
See Set Up Note 2.**



**Intermediate**



**16,000#**



**Main Boom  
"B"**

Load Radius (ft)	41'		50'		Load Radius (ft)
	$\angle^\circ$	360°	$\angle^\circ$	360°	
10	69.0	120,700	73.0	38,000	10
12	66.0	106,000	70.5	38,000	12
15	61.0	88,100	67.0	38,000	15
20	52.5	49,600	60.5	38,000	20
25	42.0	32,600	53.0	33,500	25
30	29.0	23,000	45.0	24,000	30
35			36.0	17,700	35
40			23.0	13,400	40
Min.Boom Ang/Cap.	0 (34.0)	17,700	0 (43.0)	11,300	Min.Boom Ang/Cap.

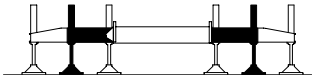
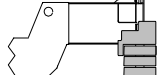
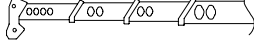
Load Radius (ft)	60'		70'		Load Radius (ft)
	$\angle^\circ$	360°	$\angle^\circ$	360°	
10	76.0	38,000		38,000	10
12	74.0	38,000	76.5	38,000	12
15	71.0	38,000	74.5	38,000	15
20	66.0	38,000	70.0	38,000	20
25	60.5	34,000	65.0	34,300	25
30	54.5	24,500	60.5	24,900	30
35	48.0	18,400	55.5	18,800	35
40	41.0	14,100	50.0	14,500	40
45	32.5	10,900	44.5	11,400	45
50	20.5	8,500	37.5	8,900	50
55			30.0	7,000	55
60			19.0	5,400	60
Min.Boom Ang/Cap.	0 (53.0)	7,200	0 (63.0)	4,500	Min.Boom Ang/Cap.

**Note: Refer To Page 8 For "Capacity Deductions For Auxiliary Load Handling Equipment".**

$\angle^\circ$  Loaded Boom Angle In Degrees.

( ) Reference Radius For Minimum Boom Angle Capacities (Shown In Parenthesis) Are In Feet.

# STERLING CRANE

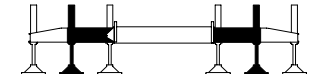
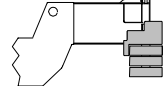
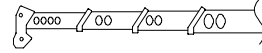
<b>Rated Lifting Capacities In Pounds</b> <b>Intermediate Extended Outriggers</b> <b>See Set Up Note 2.</b>							
		 <b>Intermediate</b>		 <b>16,000#</b>		 <b>Main Boom</b> <b>"B"</b>	
Load Radius (ft)	80'		90'		100'		Load Radius (ft)
	$\angle^\circ$	360°	$\angle^\circ$	360°	$\angle^\circ$	360°	
15	76.5	38,000					15
20	73.0	38,000	75.0	38,000	77.0	37,400	20
25	69.0	34,500	72.0	34,700	74.0	32,700	25
30	65.0	25,100	68.0	25,200	71.0	25,400	30
35	60.5	19,000	64.5	19,100	67.5	19,200	35
40	56.0	14,700	61.0	14,900	64.5	15,000	40
45	51.5	11,700	57.0	11,800	61.0	12,000	45
50	46.5	9,200	53.0	9,400	57.5	9,600	50
55	41.5	7,300	48.5	7,500	54.0	7,700	55
60	35.0	5,700	44.0	5,900	50.0	6,100	60
65	28.0	4,400	39.0	4,600	46.0	4,800	65
70	18.0	3,300	33.0	3,500	41.5	3,700	70
75			26.5	2,600	37.0	2,800	75
Min.Boom Ang/Cap.	0 (73.0)	2,700	24.0 (76.5)		34.0 (77.7)		Min.Boom Ang/Cap.

**Note: Refer To Page 8 For "Capacity Deductions For Auxiliary Load Handling Equipment".**

$\angle^\circ$  Loaded Boom Angle In Degrees.

( ) Reference Radius For Minimum Boom Angle Capacities (Shown In Parenthesis) Are In Feet.

# STERLING CRANE

Rated Lifting Capacities In Pounds Intermediate Extended Outriggers See Set Up Note 2.							
	 Intermediate				 16,000#		 Main Boom "B"
Load Radius (ft)	110'		120'		127'		Load Radius (ft)
	$\angle^\circ$	360°	$\angle^\circ$	360°	$\angle^\circ$	360°	
25	76.0	29,400	77.5	23,300	78.0*	19,600	25
30	73.5	25,500	75.0	23,300	76.0	19,600	30
35	70.5	19,300	72.5	19,400	74.0	19,400	35
40	67.5	15,100	70.0	15,100	71.5	15,200	40
45	64.5	12,100	67.0	12,100	68.5	12,200	45
50	61.0	9,700	64.0	9,700	66.0	9,800	50
55	58.0	7,800	61.5	7,800	63.5	7,900	55
60	54.5	6,200	58.5	6,300	60.5	6,300	60
65	51.5	5,000	55.5	5,000	58.0	5,100	65
70	47.5	3,900	52.5	4,000	55.0	4,000	70
75	44.0	2,900	49.0	3,000	52.0	3,100	75
Min.Boom Ang/Cap.	41.0 (78.2)		46.5 (78.8)		49.0 (79.7)		Min.Boom Ang/Cap.

**Note:** Refer To Page 8 For "Lifting Capacity Deductions For Auxiliary Load Handling Equipment".

$\angle^\circ$  Loaded Boom Angle In Degrees.

( ) Reference Radius For Minimum Boom Angle Capacities (Shown In Parenthesis) Are In Feet.

\* This Capacity Based On Maximum Obtainable Boom Angle.