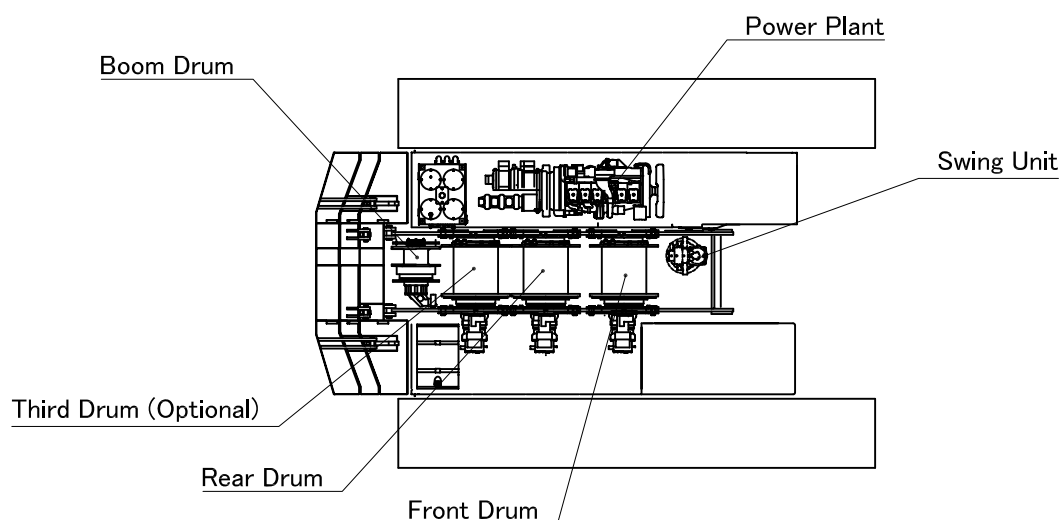
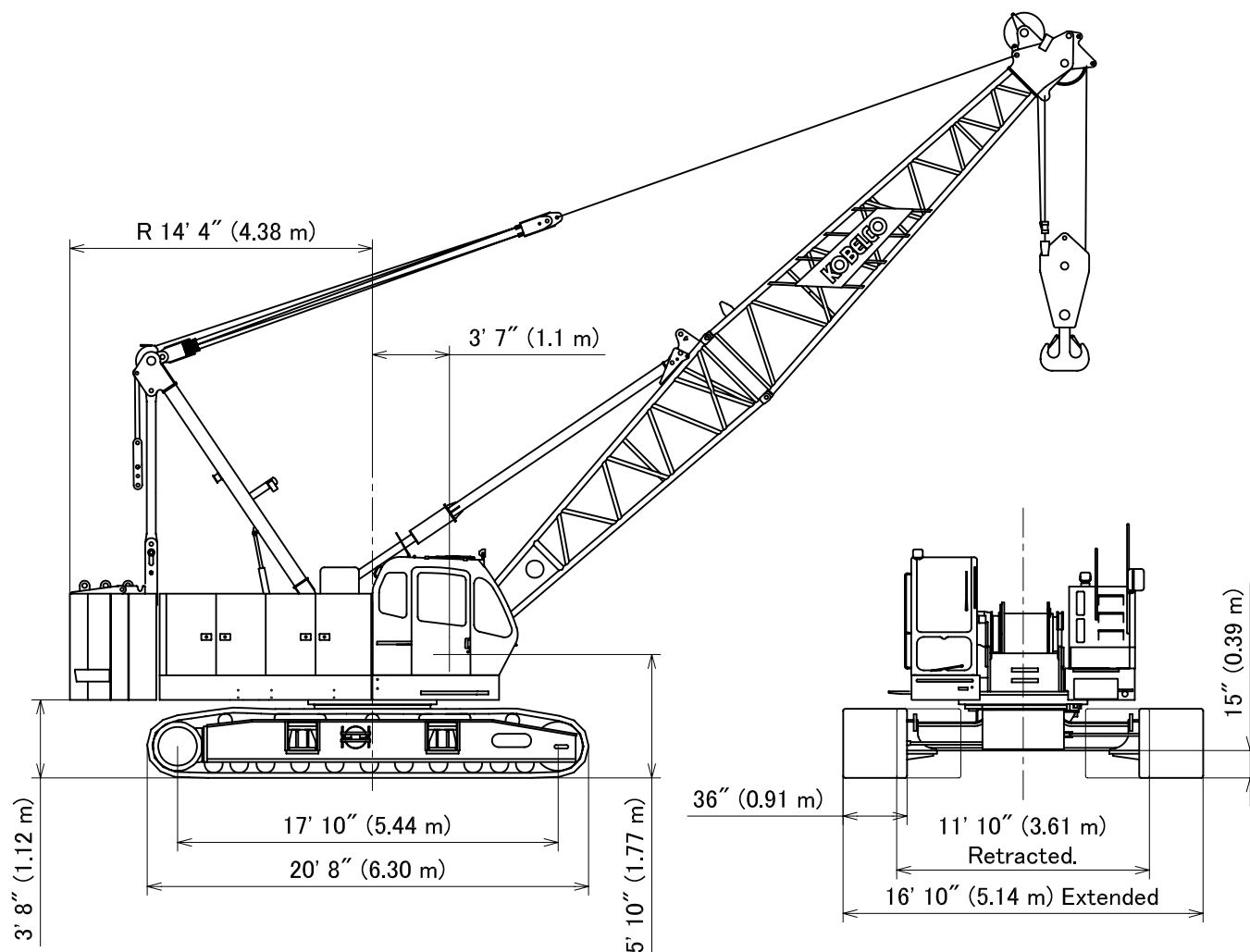




LIFTING CHARTS - Crawler Cranes

KOBELCO MODEL CK1000-III - 100 TON CAPACITY

General Dimensions



STERLING CRANE

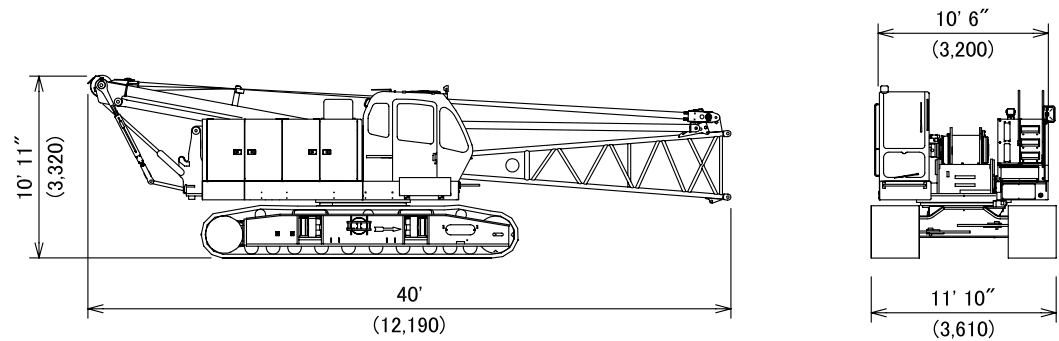
Dimensions and Weight

Dimensions: ft-in (mm) Weight: lbs (kg)

Base Machine -1

Weight: 99,970 lbs (45,350 kg)

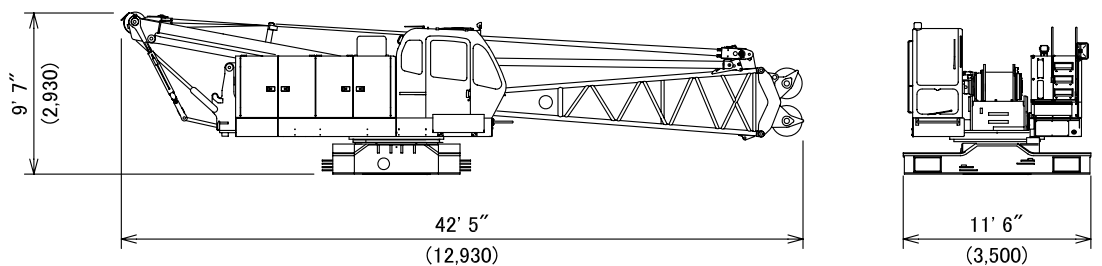
Boom base, Gantry, Crawler, Wire ropes (Front, Rear and Boom hoist drums)



Base Machine -2

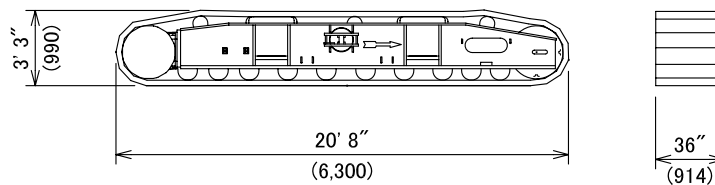
Weight: 71,420 lbs (32,400 kg)

Boom base, Auxiliary sheave for self-assembly, Wire ropes (Front, Rear and Boom hoist drums)



Crawler

Weight: 16,540 lbs (7,500 kg)



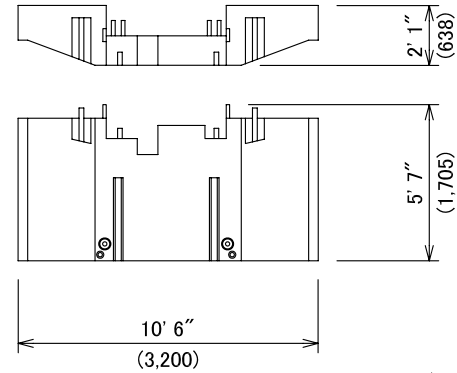
STERLING CRANE

Dimensions and Weight

Dimensions: ft-in (mm) Weight: lbs (kg)

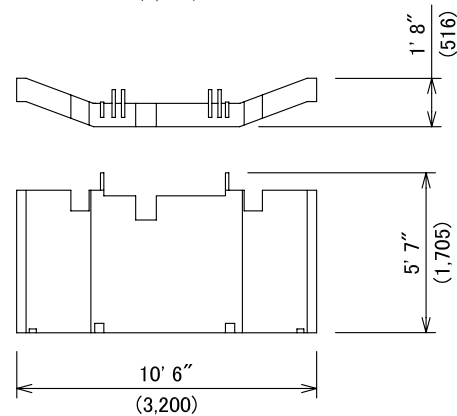
Counterweight (A)

Weight: 26,630 lbs (12,070 kg)



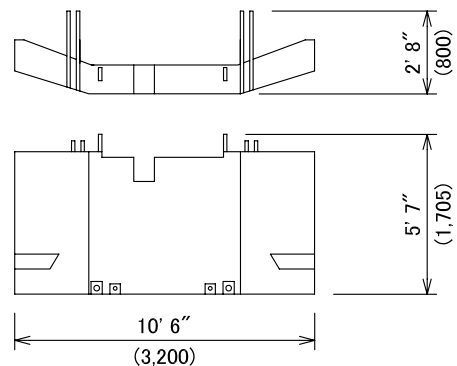
Counterweight (B)

Weight: 16,250 lbs (7,370 kg)



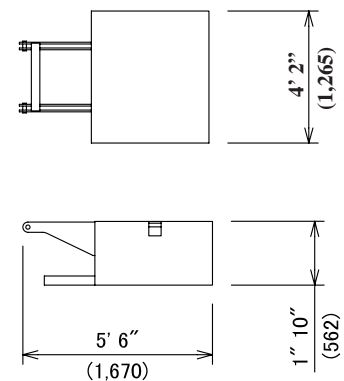
Counterweight (C)

Weight: 20,610 lbs (9,350 kg)



Carbody Weight

Weight: 8,050 lbs (3,650 kg)



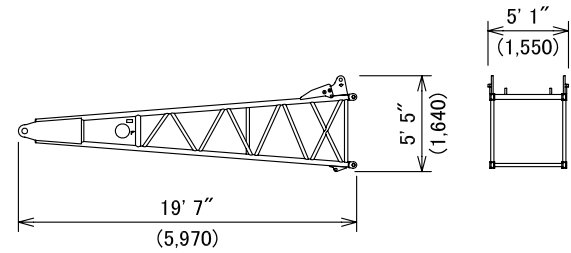
STERLING CRANE

Dimensions and Weight

Dimensions: ft-in (mm) Weight: lbs (kg)

Boom Base

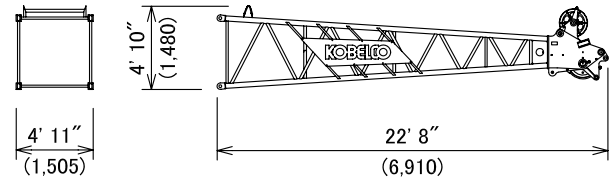
Weight: 3,250 lbs (1,475 kg)



Boom Tip

Weight: 2,730 lbs (1,240 kg)

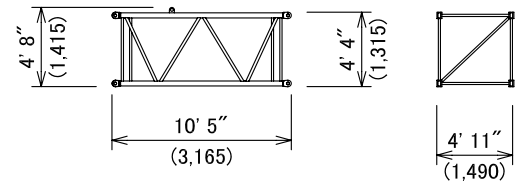
Includes cable roller and guy lines.



10 ft (3.0 m) Insert Boom

Weight: 830 lbs (380 kg)

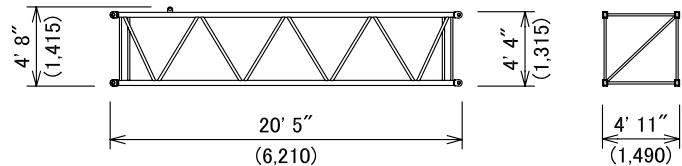
Includes cable roller and guy lines.



20 ft (6.1 m) Insert Boom

Weight: 1,350 lbs (610 kg)

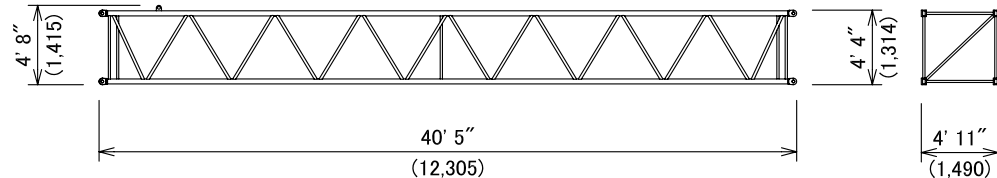
Includes cable roller and guy lines.



40 ft (12.2 m) Insert Boom

Weight: 2,410 lbs (1,090 kg)

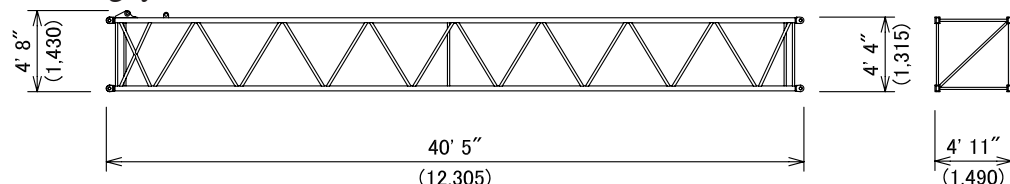
Includes cable roller and guy lines.



40 ft (12.2 m) Insert Boom (with lug)

Weight: 2,440 lbs (1,110 kg)

Includes cable roller and guy lines.



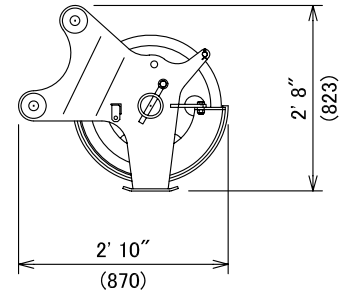
STERLING CRANE

Dimensions and Weight

Dimensions: ft-in (mm) Weight: lbs (kg)

Auxiliary Sheave

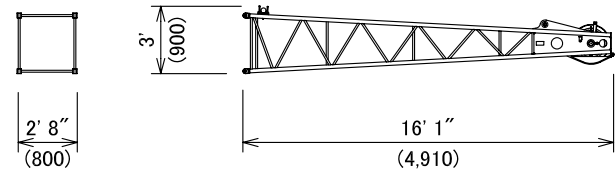
Weight: 430 lbs (195 kg)



Jib Tip

Weight: 620 lbs (280 kg)

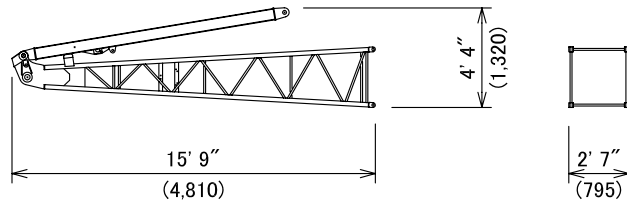
Includes cable roller.



Jib Base and Strut

Weight: 1,310 lbs (590 kg)

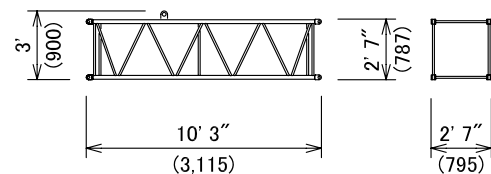
Includes guy line.



10 ft (3.0 m) Insert Jib

Weight: 290 lbs (130 kg)

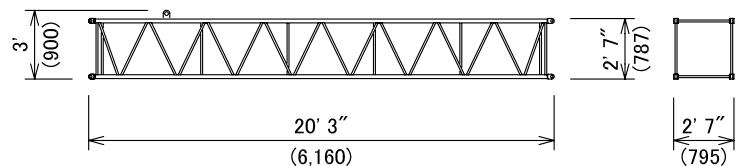
Includes cable roller and guy line.



20 ft (6.1 m) Insert Jib

Weight: 490 lbs (220 kg)

Includes cable roller and guy line.



STERLING CRANE

Transportation Plan

Shipping plan for 200 ft Boom and 60 ft Jib

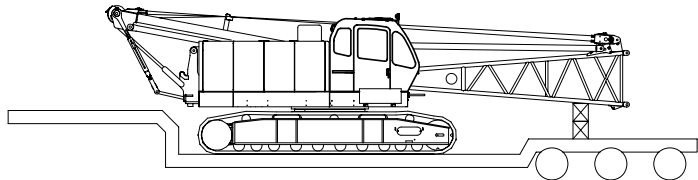
Description of Item	Weight		Trailer Loads			
	lbs	(kg)	#1	#2	#3	#4
Base Machine with Boom Base and Crawlers*	99,970	(45,350)	1			
Counterweight (A)	26,630	(12,070)		1		
Counterweight (B)	16,250	(7,370)			1	
Counterweight (C)	20,610	(9,350)			1	
Carbody Weight	8,050	(3,650)		1		1
10 ft Insert Boom and Guy Line	830	(380)		1	1	
20 ft Inser Boom and Guy Line	1,350	(610)				1
40 ft Insert Boom and Guy Line	2,410	(1,090)		1	1	
40 ft Insert Boom (w/ Lug) and Guy Line	2,440	(1,110)				1
Boom Tip and Guy Line	2,730	(1,240)				1
Jib Base and Guy Line	1,310	(590)			1	
10 ft Inser Jib and Guy Line	290	(130)			1	
20 ft Insert Jib and Guy Line	490	(220)			1	
Jib Tip	620	(280)			1	
Approx. Total Shipping Weight		lbs (kg)	99,970 (45,350)	37,920 (17,190)	42,810 (19,410)	14,570 (6,610)

* Third drum is not included.

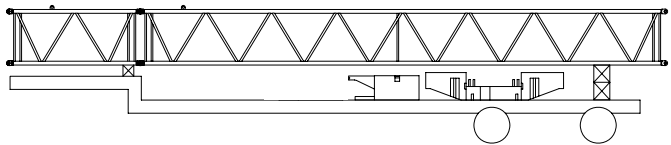
Loads for transportation were targeted at 45,000 lbs, 8' 6" wide, 48' long and 13' 6" high from ground.

This may vary depending on truck/trailer weight, style of trailer and state low.

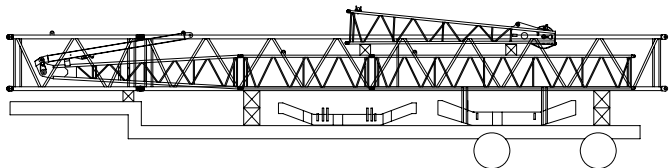
Trailer #1



Trailer #2



Trailer #3



Trailer #4

