



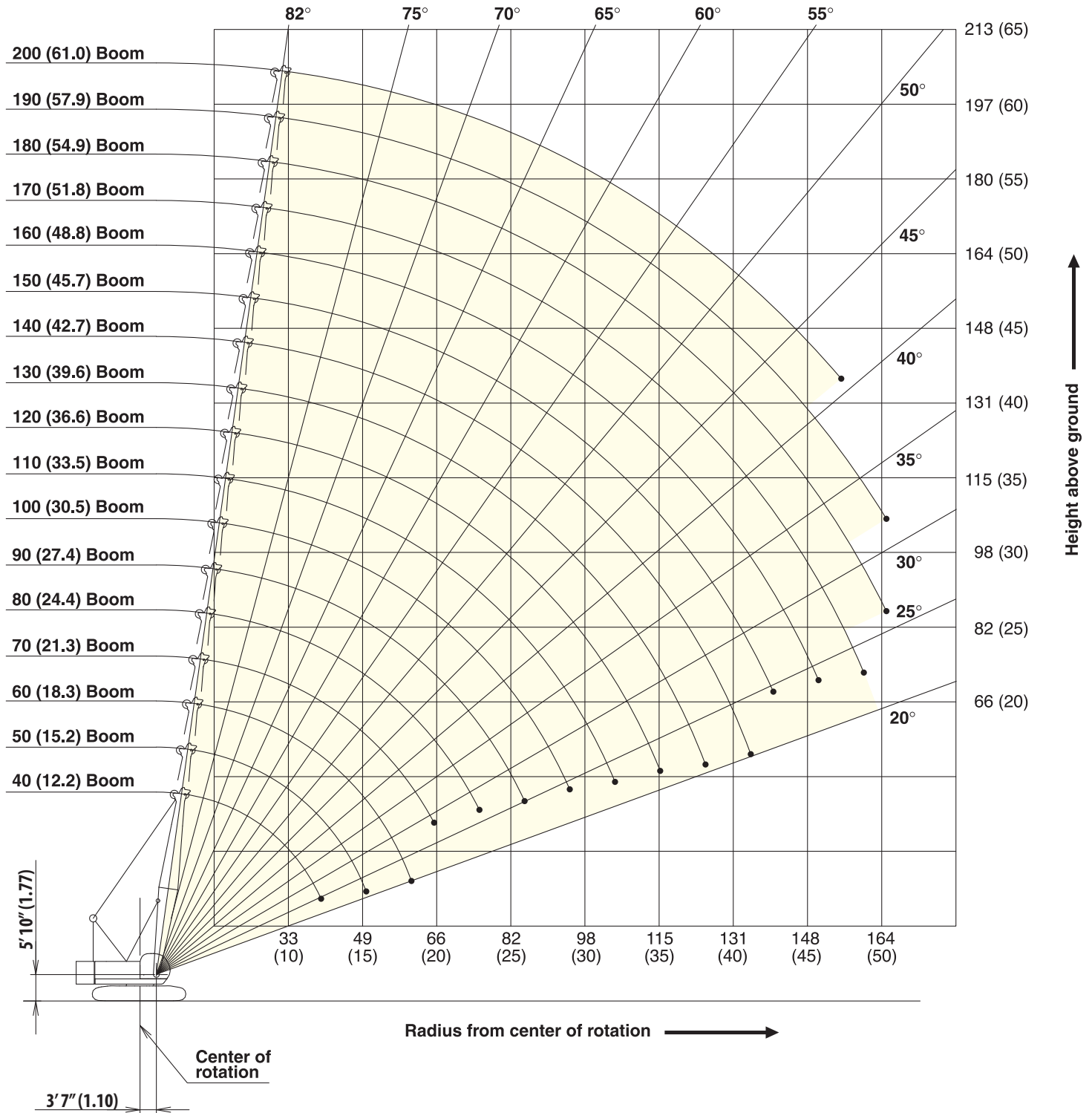
LIFTING CHARTS - Crawler Cranes

KOBELCO MODEL CK1100G - 110 TON CAPACITY

Working Ranges

Main Boom

Unit : ft (m)

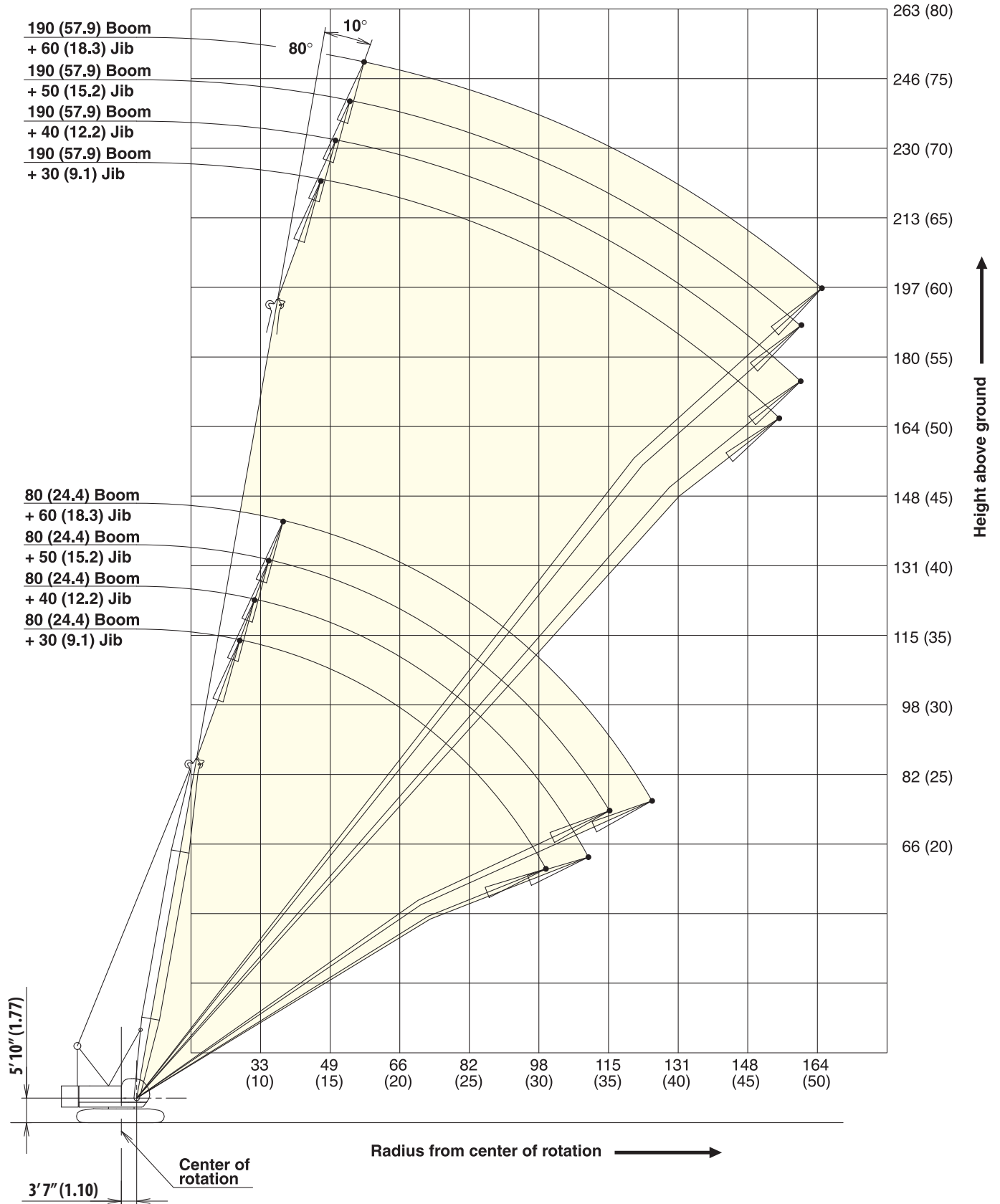


STERLING CRANE

Working Ranges

Fixed Jib 10°

Unit : ft (m)

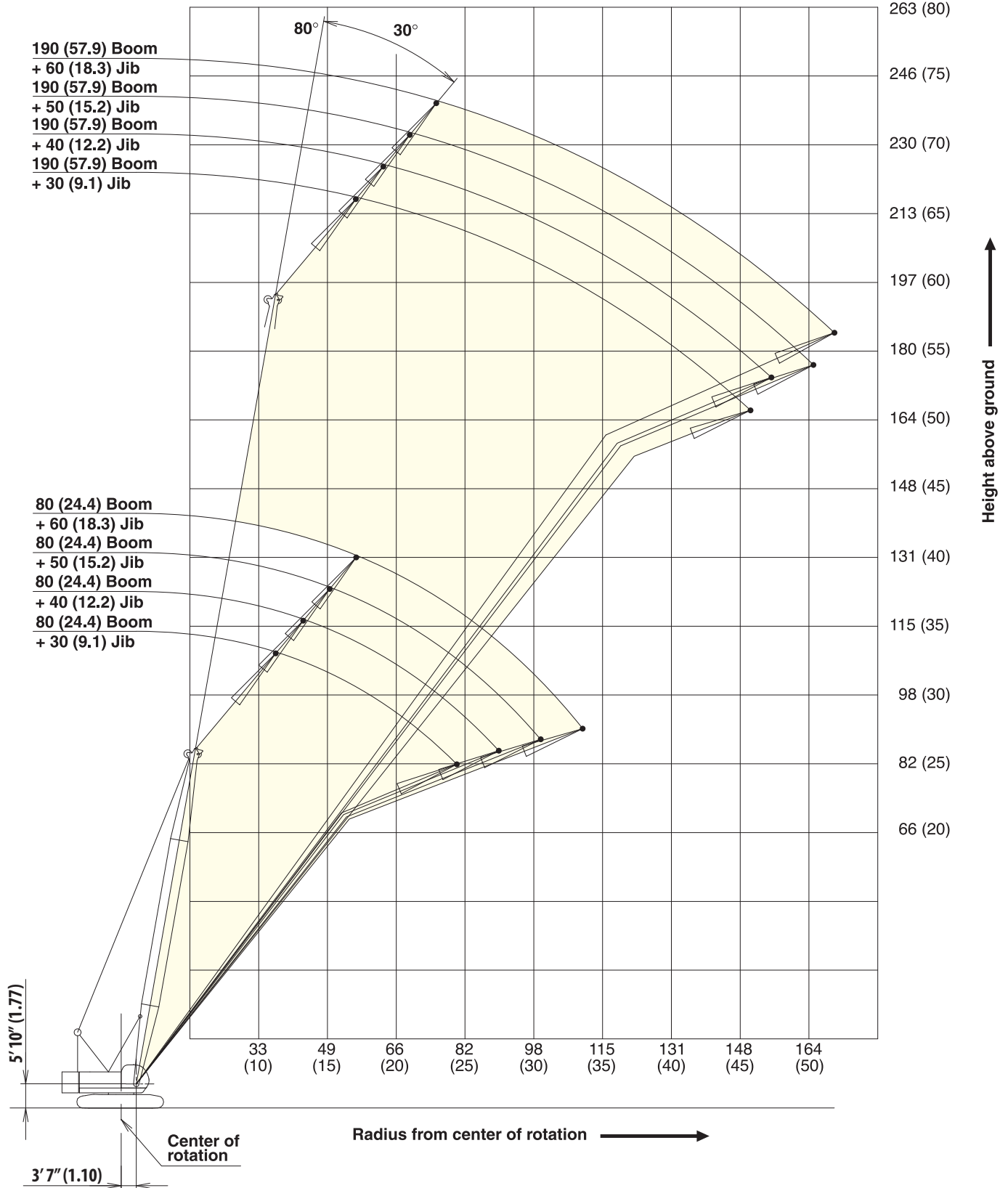


STERLING CRANE

Working Ranges

Fixed Jib 30°

Unit : ft (m)



STERLING CRANE

Supplemental Data

- Rated loads included in the charts are the maximum allowable freely suspended loads at a given boom length, boom angle and load radius, and have been determined for the machine standing level on firm supporting surface under ideal operating conditions. The user must limit or de-rate rated loads to allow for adverse conditions (such as soft or uneven ground, out-of-level conditions, wind, side loads, pendulum action, jerking or sudden stopping of loads, inexperience of personnel, multiple machine lifts, and traveling with a load).
- Rated loads do not exceed 75% of minimum tipping loads. Rated loads based on factors other than machine stability such as structural competence are shown by asterisk * in the charts.
- The machine must be reeved and set-up as stated in the operation manual and all the instruction manuals if these manuals are missing, obtain replacements.
 - The crane must be leveled to within 1% on a firm supporting surface.
 - Boom backstops are required for all boom length.
 - Gantry must be fully raised position for all operations.
- Do not attempt to lift where no radius on load is listed as crane may tip or collapse.
- Attempting to lift more than rated loads may cause machine to tip or collapse. Do not tip machine to determine rated loads.
- Weight of hooks, hook blocks, slings and other lifting devices are a part of the total load. Their total weight must be subtracted from the rated load to obtain the weight that can be lifted.
- When lifting over boom point with jib or auxiliary sheave, rated loads for the boom must be deducted as shown below.

Jib Length	Aux Sheave	30 ft	40 ft	50 ft	60 ft
Deduct (lbs)	430	2,500	3,700	5,100	6,700

- The total load that can be lifted by jib is limited by rated jib loads.
- Boom lengths for jib mounting are 80 ft (24.4 m) to 190 ft (57.9 m)
- The total load that can be lifted by the auxiliary sheave is the value for 430 lbs deducted from rated load for the boom (without auxiliary sheave installed); however, the auxiliary sheave rated load should not exceed 24,000 lbs.

- Boom lengths that can attach auxiliary sheave are from 40 ft (12.2 m) to 190 ft (57.9 m).
- The boom should be erected over the front of the crawlers, not laterally. When lifting from or lowering to the ground the boom at length of 190 ft (57.9 m) with jib, the blocks for erections must be placed at the end of the crawlers.
- Least stable position is over the side.
- Maximum hoist load for number of reeving parts of line for hoist rope.

Maximum Load for Main Boom

No. of Parts of line	1	2	3	4	5
Maximum Loads (lbs)	25,200	50,400	75,600	100,800	126,000

No. of Parts of line	6	7	8
Maximum Loads (lbs)	151,200	176,400	220,000

Maximum Load for Fixed Jib

No. of Parts of line	1
Maximum Loads (lbs)	24,000

Maximum Load Auxiliary Sheave

No. of Parts of line	1
Maximum Loads (lbs)	24,000

- Rated loads listed apply only to the machine as originally manufactured and designed by KOBELCO CRANES CO., LTD. Modifications to this machine or use of equipment other than that specified can reduce operating capacity.
- Designed and rated to comply with ANSI Code B30.5.

STERLING CRANE

Main Boom Lift Capacity

Full Counterweight: 69,000 lbs Carbody Weight: 31,800

40' Boom			50' Boom			60' Boom			70' Boom			80' Boom		
Load Radius (ft)	Boom Angle (deg.)	360° Rated Load (lbs)	Load Radius (ft)	Boom Angle (deg.)	360° Rated Load (lbs)	Load Radius (ft)	Boom Angle (deg.)	360° Rated Load (lbs)	Load Radius (ft)	Boom Angle (deg.)	360° Rated Load (lbs)	Load Radius (ft)	Boom Angle (deg.)	360° Rated Load (lbs)
11.0	80.5	220,000 *	12.0	81.2	213,200 *	13.0	81.7	200,400 *	15.0	81.3	151,000 *	16.0	81.6	151,000 *
12.0	79.0	213,300 *	13.0	80.0	200,600 *	14.0	80.7	187,400 *	16.0	80.4	151,000 *	17.0	80.9	149,300 *
13.0	77.5	200,800 *	14.0	78.9	187,800 *	15.0	79.8	175,200 *	17.0	79.6	149,400 *	18.0	80.2	146,500 *
14.0	76.0	188,100 *	15.0	77.7	175,600 *	16.0	78.8	164,800 *	18.0	78.7	146,700 *	19.0	79.5	139,400 *
15.0	74.6	175,900 *	16.0	76.6	165,300 *	17.0	77.8	155,500 *	19.0	77.9	139,800 *	20.0	78.8	131,800
16.0	73.1	165,500 *	17.0	75.4	156,000 *	18.0	76.8	146,900 *	20.0	77.1	132,200	22.0	77.3	115,100
17.0	71.6	156,300 *	18.0	74.2	147,400 *	19.0	75.9	139,800 *	22.0	75.4	115,400	24.0	75.8	101,000
18.0	70.1	147,800 *	19.0	72.9	140,100 *	20.0	74.9	132,200	24.0	73.7	101,300	26.0	74.3	89,200
19.0	68.5	140,500 *	20.0	71.7	132,400	22.0	72.9	115,100	26.0	72.0	89,600	28.0	72.8	80,500
20.0	66.9	132,800	22.0	69.3	115,300	24.0	70.9	100,800	28.0	70.3	80,800	30.0	71.2	72,800
22.0	63.7	115,600	24.0	66.8	101,000	26.0	68.8	89,100	30.0	68.5	73,000	32.0	69.7	66,600
24.0	60.4	101,300	26.0	64.3	89,400	28.0	66.7	80,500	32.0	66.7	67,000	34.0	68.2	61,600
26.0	57.0	89,600	28.0	61.7	80,700	30.0	64.6	72,800	34.0	64.9	62,000	36.0	66.6	57,300
28.0	53.4	80,900	30.0	59.1	73,000	32.0	62.5	66,600	36.0	63.0	57,800	38.0	65.1	53,100
30.0	49.8	73,300	32.0	56.3	67,000	34.0	60.3	61,600	38.0	61.2	53,600	40.0	63.5	49,300
32.0	45.8	67,200	34.0	53.4	62,000	36.0	58.0	57,300	40.0	59.3	49,800	42.0	61.8	46,600
34.0	41.2	61,700	36.0	50.3	57,800	38.0	55.7	53,100	42.0	57.3	46,900	44.0	60.2	43,800
36.0	36.2	56,600	38.0	47.3	53,600	40.0	53.4	49,300	44.0	55.3	44,100	46.0	58.5	41,100
38.0	31.1	51,500	40.0	44.0	49,800	42.0	50.9	46,600	46.0	53.3	41,300	48.0	56.8	39,100
40.0	25.4	45,900 *	42.0	40.4	47,000	44.0	48.3	43,800	48.0	51.2	39,400	50.0	55.1	37,100
			44.0	36.7	44,300	46.0	45.8	41,100	50.0	49.0	37,400	55.0	50.5	32,700
			46.0	32.9	41,500	48.0	42.8	39,200	55.0	43.2	33,200	60.0	45.7	29,200
			48.0	27.6	38,300	50.0	39.9	37,200	60.0	36.9	29,600	65.0	40.4	26,300
			50.0	22.3	35,100	55.0	31.2	32,900	65.0	29.2	26,800	70.0	34.3	24,100
						60.0	20.7	28,600 *				75.0	26.9	22,100
Reeves		8	Reeves		8	Reeves		8	Reeves		6	Reeves		6
90' Boom			100' Boom			110' Boom			120' Boom			130' Boom		
Load Radius (ft)	Boom Angle (deg.)	360° Rated Load (lbs)	Load Radius (ft)	Boom Angle (deg.)	360° Rated Load (lbs)	Load Radius (ft)	Boom Angle (deg.)	360° Rated Load (lbs)	Load Radius (ft)	Boom Angle (deg.)	360° Rated Load (lbs)	Load Radius (ft)	Boom Angle (deg.)	360° Rated Load (lbs)
17.0	81.9	125,800 *	19.0	81.6	125,600 *	20.0	81.8	100,800 *	22.0	81.6	98,700 *	24.0	81.3	85,100 *
18.0	81.3	125,800 *	20.0	81.0	123,600 *	22.0	80.8	100,800 *	24.0	80.6	94,200 *	26.0	80.4	83,900 *
19.0	80.7	125,800 *	22.0	79.9	112,200 *	24.0	79.7	96,500 *	26.0	79.6	88,000 *	28.0	79.5	78,200 *
20.0	80.0	124,000 *	24.0	78.7	100,600	26.0	78.6	88,500 *	28.0	78.6	79,900	30.0	78.6	71,900
22.0	78.7	112,500 *	26.0	77.5	88,900	28.0	77.6	80,200	30.0	77.7	72,200	32.0	77.7	65,900
24.0	77.4	100,800	28.0	76.3	80,200	30.0	76.5	72,400	32.0	76.7	66,100	34.0	76.9	60,900
26.0	76.1	89,100	30.0	75.1	72,400	32.0	75.4	66,300	34.0	75.7	61,100	36.0	75.9	56,600
28.0	74.8	80,500	32.0	74.0	66,300	34.0	74.3	61,300	36.0	74.7	56,800	38.0	75.0	52,300
30.0	73.5	72,800	34.0	72.8	61,300	36.0	73.2	57,000	38.0	73.7	52,500	40.0	74.1	48,400
32.0	72.1	66,600	36.0	71.6	57,000	38.0	72.2	52,700	40.0	72.7	48,700	42.0	73.2	45,600
34.0	70.8	61,600	38.0	70.3	52,700	40.0	71.1	48,900	42.0	71.7	45,800	44.0	72.2	42,800
36.0	69.4	57,300	40.0	69.1	48,900	42.0	70.0	46,200	44.0	70.7	43,000	46.0	71.3	40,000
38.0	68.0	53,100	42.0	67.9	46,200	44.0	68.9	43,400	46.0	69.7	40,200	48.0	70.4	38,000
40.0	66.6	49,300	44.0	66.6	43,400	46.0	67.8	40,700	48.0	68.6	38,300	50.0	69.4	36,000
42.0	65.2	46,500	46.0	65.4	40,700	48.0	66.6	38,700	50.0	67.6	36,300	55.0	67.1	31,600
44.0	63.8	43,700	48.0	64.1	38,700	50.0	65.4	36,600	55.0	65.0	32,000	60.0	64.6	28,100
46.0	62.4	40,900	50.0	62.8	36,600	55.0	62.5	32,300	60.0	62.3	28,300	65.0	62.2	25,200
48.0	60.9	38,900	55.0	59.5	32,300	60.0	59.5	28,700	65.0	59.6	25,400	70.0	59.6	22,900
50.0	59.4	36,900	60.0	56.1	28,700	65.0	56.5	25,900	70.0	56.8	23,200	75.0	57.0	20,900
55.0	55.7	32,500	65.0	52.5	25,900	70.0	53.2	23,500	75.0	53.8	21,200	80.0	54.3	19,000
60.0	51.7	29,000	70.0	48.8	23,500	75.0	49.9	21,400	80.0	50.8	19,400	85.0	51.6	17,500
65.0	47.4	26,100	75.0	44.8	21,400	80.0	46.4	19,600	85.0	47.7	17,700	90.0	48.7	16,100
70.0	42.9	23,800	80.0	40.5	19,600	85.0	42.6	18,100	90.0	44.3	16,500	95.0	45.6	15,000
75.0	37.9	21,800	85.0	36.0	18,100	90.0	38.6	16,800	95.0	40.7	15,300	100.0	42.4	14,000
80.0	32.2	20,100	90.0	30.5	16,900	95.0	34.1	15,600	100.0	36.9	14,200	110.0	35.4	12,100
85.0	25.7	18,600	95.0	24.0	15,800	100.0	29.1	14,600	110.0	27.8	12,600	120.0	26.6	10,800
						105.0	23.2	13,770	115.0	22.2	11,840	125.0	21.3	10,230
Reeves		5	Reeves		5	Reeves		4	Reeves		4	Reeves		4

Note: Designed and rated to comply with ANSI Code B30.5
Capacities based on factors other than machine stability such as structural competence are shown by asterisk * in the charts.

STERLING CRANE

Main Boom Lift Capacity

Full Counterweight: 69,000 lbs Carbody Weight: 31,800

140' Boom			150' Boom			160' Boom			170' Boom			180' Boom											
Load Radius (ft)	Boom Angle (deg.)	360° Rated Load (lbs)	Load Radius (ft)	Boom Angle (deg.)	360° Rated Load (lbs)	Load Radius (ft)	Boom Angle (deg.)	360° Rated Load (lbs)	Load Radius (ft)	Boom Angle (deg.)	360° Rated Load (lbs)	Load Radius (ft)	Boom Angle (deg.)	360° Rated Load (lbs)									
24.0	81.9	72,900 *	26.0	81.7	62,200 *	28.0	81.5	50,200 *	30.0	81.3	44,500 *	30.0	81.8	39,300 *									
26.0	81.1	71,800 *	28.0	80.9	61,300 *	30.0	80.8	50,100 *	32.0	80.7	43,900 *	32.0	81.2	38,800 *									
28.0	80.3	70,800 *	30.0	80.1	60,400 *	32.0	80.1	49,700 *	34.0	80.0	43,200 *	34.0	80.5	38,200 *									
30.0	79.4	69,000 *	32.0	79.4	59,400 *	34.0	79.4	49,200 *	36.0	79.3	42,500 *	36.0	79.9	37,600 *									
32.0	78.6	64,700 *	34.0	78.6	57,200 *	36.0	78.6	48,500 *	38.0	78.6	41,900 *	38.0	79.2	37,000 *									
34.0	77.8	60,500 *	36.0	77.8	54,100 *	38.0	77.9	47,800 *	40.0	77.9	41,200 *	40.0	78.6	36,400 *									
36.0	76.9	56,200	38.0	77.0	51,000 *	40.0	77.2	46,600 *	42.0	77.2	40,600 *	42.0	77.9	35,800 *									
38.0	76.1	52,000 *	40.0	76.3	48,000 *	42.0	76.4	44,300 *	44.0	76.5	40,000 *	44.0	77.2	35,100 *									
40.0	75.2	48,200	42.0	75.5	45,200	44.0	75.6	42,100 *	46.0	75.8	39,300 *	46.0	76.6	34,500 *									
42.0	74.4	45,400 *	44.0	74.7	42,400 *	46.0	74.9	39,800 *	48.0	75.1	37,400 *	48.0	75.9	33,900 *									
44.0	73.5	42,600	46.0	73.9	39,600	48.0	74.1	37,800	50.0	74.4	35,400 *	50.0	75.3	33,300 *									
46.0	72.7	39,800 *	48.0	73.1	37,500 *	50.0	73.4	35,800 *	55.0	72.6	31,200 *	55.0	73.7	30,800 *									
48.0	71.8	37,800	50.0	72.3	35,500	55.0	71.5	31,400	60.0	70.9	27,600	60.0	72.0	27,400									
50.0	71.0	35,800 *	55.0	70.3	31,200 *	60.0	69.6	27,800 *	65.0	69.1	24,600 *	65.0	70.3	24,400 *									
55.0	68.8	31,400	60.0	68.2	27,600	65.0	67.7	25,000	70.0	67.3	22,300	70.0	68.6	21,900									
60.0	66.6	27,800 *	65.0	66.2	24,800 *	70.0	65.8	22,600 *	75.0	65.4	20,300 *	75.0	66.9	19,900 *									
65.0	64.3	25,000	70.0	64.0	22,400	75.0	63.8	20,500	80.0	63.5	18,500	80.0	65.2	18,100									
70.0	62.0	22,600 *	75.0	61.9	20,300 *	80.0	61.8	18,700 *	85.0	61.6	16,800 *	85.0	63.4	16,600 *									
75.0	59.7	20,500	80.0	59.6	18,500	85.0	59.7	17,000	90.0	59.7	15,400	90.0	61.6	15,200									
80.0	57.3	18,700 *	85.0	57.4	17,000 *	90.0	57.6	15,700 *	95.0	57.8	14,300 *	95.0	59.8	14,000 *									
85.0	54.8	17,200	90.0	55.2	15,700	95.0	55.4	14,500	100.0	55.8	13,300	100.0	57.9	12,900									
90.0	52.2	15,900 *	95.0	52.8	14,400 *	100.0	53.2	13,500 *	110.0	51.5	11,500 *	110.0	54.0	11,100 *									
95.0	49.5	14,600	100.0	50.3	13,400	110.0	48.6	11,700	120.0	47.0	9,800	120.0	49.9	9,600									
100.0	46.8	13,600 *	110.0	45.1	11,700 *	120.0	43.6	10,100 *	130.0	42.2	8,700 *	130.0	45.6	8,500 *									
110.0	40.8	11,900	120.0	39.3	10,300	130.0	38.1	8,900	140.0	36.8	7,700	140.0	40.9	7,400									
120.0	34.0	10,300 *	130.0	32.8	8,900 *	140.0	31.6	7,900 *	150.0	30.5	6,800 *	150.0	35.7	6,500 *									
130.0	25.7	9,200	140.0	24.3	8,000	150.0	23.7	7,100	160.0	23.2	5,900	160.0	29.7	5,600									
135.0	20.5	8,830 *										165.0	26.5	5,100 *									
Reeves			4			Reeves			4			Reeves			2			Reeves			2		
190' Boom			200' Boom																				
Load Radius (ft)	Boom Angle (deg.)	360° Rated Load (lbs)	Load Radius (ft)	Boom Angle (deg.)	360° Rated Load (lbs)																		
32.0	81.6	34,400 *	34.0	81.5	30,300 *																		
34.0	81.0	33,800 *	36.0	80.9	29,700 *																		
36.0	80.4	33,300 *	38.0	80.3	29,200 *																		
38.0	79.8	32,700 *	40.0	79.7	28,700 *																		
40.0	79.2	32,200 *	42.0	79.1	28,200 *																		
42.0	78.6	31,700 *	44.0	78.6	27,700 *																		
44.0	78.0	31,100 *	46.0	78.0	27,300 *																		
46.0	77.4	30,600 *	48.0	77.4	26,800 *																		
48.0	76.7	30,100 *	50.0	76.8	26,300 *																		
50.0	76.1	29,600 *	55.0	75.3	24,900 *																		
55.0	74.5	28,100 *	60.0	73.8	23,200 *																		
60.0	73.0	26,200 *	65.0	72.4	21,500 *																		
65.0	71.4	24,000 *	70.0	70.9	20,000 *																		
70.0	69.8	21,800 *	75.0	69.3	18,500 *																		
75.0	68.2	19,900	80.0	67.8	17,100 *																		
80.0	66.5	18,000 *	85.0	66.2	15,900 *																		
85.0	64.9	16,400	90.0	64.6	14,700																		
90.0	63.2	15,000 *	95.0	63.0	13,500 *																		
95.0	61.5	13,900	100.0	61.4	12,400																		
100.0	59.7	12,900 *	110.0	58.1	10,600 *																		
110.0	56.2	11,000	120.0	54.6	9,200																		
120.0	52.5	9,400 *	130.0	51.1	7,800 *																		
130.0	48.5	8,200	140.0	47.2	6,500																		
140.0	44.3	7,200 *	150.0	43.1	5,200 *																		
150.0	39.7	6,300	155.0	41.0	4,650 *																		
160.0	34.8	5,300 *																					
165.0	32.1	4,650																					
Reeves			2			Reeves			2														

Note: Designed and rated to comply with ANSI Code B30.5
Capacities based on factors other than machine stability such as structural competence are shown by asterisk * in the charts.

STERLING CRANE

Fixed Jib Lift Capacity

Full Counterweight: 69,000 lbs Carbody Weight: 31,800

80' Boom																							
30 ft Jib						40 ft Jib						50 ft Jib						60 ft Jib					
O set Angle (deg.)						O set Angle (deg.)						O set Angle (deg.)						O set Angle (deg.)					
10			30			10			30			10			30			10			30		
Load Radius (ft)	Boom Angle (deg.)	Rated Load (lbs)	Load Radius (ft)	Boom Angle (deg.)	Rated Load (lbs)	Load Radius (ft)	Boom Angle (deg.)	Rated Load (lbs)	Load Radius (ft)	Boom Angle (deg.)	Rated Load (lbs)	Load Radius (ft)	Boom Angle (deg.)	Rated Load (lbs)	Load Radius (ft)	Boom Angle (deg.)	Rated Load (lbs)	Load Radius (ft)	Boom Angle (deg.)	Rated Load (lbs)			
30.0	79.3	24,000*				34.0	79.3	24,000*				38.0	79.3	20,000*				40.0	79.8	18,000*			
32.0	78.0	24,000*				36.0	78.3	24,000*				40.0	78.4	20,000*				45.0	77.7	18,000*			
34.0	77.0	24,000*				38.0	77.4	24,000*				45.0	76.1	20,000*				50.0	75.6	17,850*			
36.0	75.9	24,000*				40.0	76.4	24,000*				50.0	73.8	20,000*				55.0	73.3	16,180*			
38.0	74.9	24,000*	38.0	79.6	21,000*	45.0	73.9	24,000*	45.0	79.7	15,360*	55.0	71.3	18,560*	55.0	78.0	11,080*	60.0	71.2	14,850*	60.0	78.7	8,950*
40.0	73.8	24,000*	40.0	78.5	21,000*	50.0	71.4	24,000*	50.0	77.1	14,480*	60.0	68.9	17,080*	60.0	75.5	10,490*	65.0	69.0	13,730*	65.0	76.4	8,480*
45.0	71.1	24,000*	45.0	75.7	20,700*	55.0	68.7	22,480*	55.0	74.3	13,640*	65.0	66.5	15,800*	65.0	73.0	9,980*	70.0	66.7	12,760*	70.0	74.1	8,060*
50.0	68.3	24,000*	50.0	72.8	19,510*	60.0	66.1	20,700*	60.0	71.6	12,980*	70.0	64.0	14,720*	70.0	70.4	9,540*	75.0	64.3	11,860*	75.0	71.5	7,670*
55.0	65.3	24,000*	55.0	69.7	18,380*	65.0	63.4	19,180*	65.0	68.8	12,360*	75.0	61.3	13,710*	75.0	67.6	9,100*	80.0	61.9	11,130*	80.0	69.0	7,340*
60.0	62.4	24,000*	60.0	66.7	17,500*	70.0	60.6	17,870*	70.0	65.9	11,830*	80.0	58.7	12,870*	80.0	64.8	8,730*	85.0	59.5	10,470*	85.0	66.5	7,030*
65.0	59.3	22,920	65.0	63.6	16,710*	75.0	57.6	16,660*	75.0	62.7	11,350*	85.0	56.0	12,140*	85.0	62.0	8,420*	90.0	57.0	9,870*	90.0	63.9	6,760*
70.0	56.2	20,810	70.0	60.3	16,020*	80.0	54.6	15,670*	80.0	59.6	10,930*	90.0	53.2	11,500*	90.0	59.0	8,130*	95.0	54.2	9,320*	95.0	60.9	6,500*
75.0	52.8	18,910	75.0	56.7	15,380*	85.0	51.5	14,810*	85.0	56.3	10,560*	95.0	50.0	10,890*	95.0	55.6	7,840*	100.0	51.5	8,860*	100.0	58.1	6,280*
80.0	49.3	17,370	80.0	53.1	14,850*	90.0	48.3	14,040*	90.0	52.9	10,250*	100.0	46.9	10,360*	100.0	52.3	7,620*	105.0	48.7	8,440*	105.0	55.0	6,100*
85.0	45.7	16,020				95.0	44.6	13,310*				105.0	43.6	9,890*				110.0	45.7	8,060*	110.0	51.8	5,930*
90.0	41.8	14,850				100.0	40.8	12,690*				110.0	40.0	9,470*				115.0	42.3	7,690*			
95.0	37.2	13,750				105.0	36.7	12,120				115.0	35.8	9,080*				120.0	38.8	7,380*			
100.0	32.4	12,830				110.0	32.1	11,350*										125.0	35.1	7,120*			
Reeves	1		Reeves	1		Reeves	1		Reeves	1		Reeves	1		Reeves	1		Reeves	1		Reeves	1	

90' Boom																							
30 ft Jib						40 ft Jib						50 ft Jib						60 ft Jib					
O set Angle (deg.)						O set Angle (deg.)						O set Angle (deg.)						O set Angle (deg.)					
10			30			10			30			10			30			10			30		
Load Radius (ft)	Boom Angle (deg.)	Rated Load (lbs)	Load Radius (ft)	Boom Angle (deg.)	Rated Load (lbs)	Load Radius (ft)	Boom Angle (deg.)	Rated Load (lbs)	Load Radius (ft)	Boom Angle (deg.)	Rated Load (lbs)	Load Radius (ft)	Boom Angle (deg.)	Rated Load (lbs)	Load Radius (ft)	Boom Angle (deg.)	Rated Load (lbs)	Load Radius (ft)	Boom Angle (deg.)	Rated Load (lbs)			
32.0	79.1	24,000*				36.0	79.3	24,000*				38.0	80.0	20,000*				45.0	78.6	18,000*			
34.0	78.1	24,000*				38.0	78.4	24,000*				40.0	79.2	20,000*				50.0	76.6	18,000*			
36.0	77.1	24,000*				40.0	77.5	24,000*				45.0	77.1	20,000*				55.0	74.5	16,970*			
38.0	76.2	24,000*				45.0	75.2	24,000*				50.0	75.0	20,000*				60.0	72.5	15,630*	60.0	79.5	9,100*
40.0	75.2	24,000*	40.0	79.5	21,000*	50.0	72.9	24,000*	50.0	78.2	14,810*	55.0	72.7	19,550*	55.0	78.9	11,300*	65.0	70.5	14,460*	65.0	77.4	8,660*
45.0	72.7	24,000*	45.0	77.0	21,000*	55.0	70.4	23,890*	55.0	75.6	14,020*	60.0	70.5	18,000*	60.0	76.7	10,730*	70.0	68.4	13,470*	70.0	75.3	8,240*
50.0	70.2	24,000*	50.0	74.4	20,100*	60.0	68.1	22,020*	60.0	73.2	13,330*	65.0	68.3	16,730*	65.0	74.4	10,250*	75.0	66.1	12,520*	75.0	72.9	7,870*
55.0	67.5	24,000*	55.0	71.6	19,020*	65.0	65.6	20,410*	65.0	70.7	12,760*	70.0	66.1	15,580*	70.0	72.0	9,780*	80.0	64.0	11,770*	80.0	70.7	7,530*
60.0	64.9	24,000*	60.0	68.9	18,120*	70.0	63.2	19,040*	70.0	68.1	12,230*	75.0	63.6	14,520*	75.0	69.5	9,360*	85.0	61.8	11,080*	85.0	68.4	7,230*
65.0	62.2	22,660	65.0	66.1	17,320*	75.0	60.4	17,760*	75.0	65.3	11,720*	80.0	61.3	13,660*	80.0	67.0	8,990*	90.0	59.5	10,470*	90.0	66.0	6,960*
70.0	59.4	20,540	70.0	63.3	16,620*	80.0	57.8	16,730*	80.0	62.5	11,300*	85.0	58.8	12,890*	85.0	64.5	8,680*	95.0	57.1	9,890*	95.0	63.4	6,700*
75.0	56.4	18,620	75.0	60.2	15,960*	85.0	55.1	15,800*	85.0	59.7	10,930*	90.0	56.3	12,210*	90.0	61.8	8,370*	100.0	54.7	9,390*	100.0	60.9	6,480*
80.0	53.5	17,080	80.0	57.1	15,430*	90.0	52.3	14,740	90.0	56.7	10,580*	95.0	53.6	11,570*	95.0	58.9	8,110*	105.0	52.2	8,950*	105.0	58.3	6,280*
85.0	50.4	15,760	85.0	53.9	14,940*	95.0	49.1	13,620	95.0	53.4	10,270*	100.0	50.9	11,020*	100.0	56.1	7,870*	110.0	49.6	8,550*	110.0	55.5	6,100*
90.0	47.1	14,570				100.0	46.0	12,690				105.0	48.0	10,530*	105.0	53.1	7,640*	115.0	46.7	8,150*	115.0	52.4	5,930*
95.0	43.4	13,470				105.0	42.7	11,860				110.0	45.1	10,070*				120.0	43.8	7,820*			
100.0	39.7	12,540				110.0	39.1	11,080				115.0	41.7	9,650*				125.0	40.7	7,530*			
105.0	35.6	11,700				115.0	35.0	10,360				120.0	38.2	9,300*				130.0	37.4	7,270*			
												125.0	34.4	8,970*				135.0	33.8	7,010*			
Reeves	1		Reeves	1		Reeves	1		Reeves	1		Reeves	1		Reeves	1		Reeves	1		Reeves	1	

Note: Designed and rated to comply with ANSI Code B30.5

Capacities based on factors other than machine stability such as structural competence are shown by asterisk * in the charts.

STERLING CRANE

Fixed Jib Lift Capacity

Full Counterweight: 69,000 lbs Carbody Weight: 31,800

100' Boom																								
30 ft Jib						40 ft Jib						50 ft Jib						60 ft Jib						
0 set Angle (deg.)						0 set Angle (deg.)						0 set Angle (deg.)						0 set Angle (deg.)						
10			30			10			30			10			30			10		30				
Load Radius (ft)	Boom Angle (deg.)	Rated Load (lbs)	Load Radius (ft)	Boom Angle (deg.)	Rated Load (lbs)	Load Radius (ft)	Boom Angle (deg.)	Rated Load (lbs)	Load Radius (ft)	Boom Angle (deg.)	Rated Load (lbs)	Load Radius (ft)	Boom Angle (deg.)	Rated Load (lbs)	Load Radius (ft)	Boom Angle (deg.)	Rated Load (lbs)	Load Radius (ft)	Boom Angle (deg.)	Rated Load (lbs)	Load Radius (ft)	Boom Angle (deg.)	Rated Load (lbs)	
32.0	79.9	24,000*				36.0	80.0	24,000*				40.0	79.9	20,000*				45.0	79.3	18,000*				
34.0	79.0	24,000*				38.0	79.2	24,000*				45.0	78.0	20,000*				50.0	77.5	18,000*				
36.0	78.1	24,000*				40.0	78.4	24,000*				50.0	76.0	20,000*				55.0	75.5	17,720*				
38.0	77.2	24,000*				45.0	76.3	24,000*				55.0	73.9	20,000*	55.0	79.7	11,500*	60.0	73.7	16,350*				
40.0	76.4	24,000*				50.0	74.2	24,000*	50.0	79.1	15,100*	60.0	71.9	18,930*	60.0	77.7	10,950*	65.0	71.8	15,160*	65.0	78.3	8,810*	
45.0	74.1	24,000*	45.0	78.0	21,000*	55.0	71.9	24,000*	55.0	76.7	14,320*	65.0	69.9	17,590*	65.0	75.5	10,470*	70.0	69.9	14,130*	70.0	76.3	8,420*	
50.0	71.8	24,000*	50.0	75.7	20,650*	60.0	69.7	23,280*	60.0	74.5	13,660*	70.0	67.8	16,420*	70.0	73.4	10,030*	75.0	67.8	13,160*	75.0	74.2	8,040*	
55.0	69.3	24,000*	55.0	73.2	19,570*	65.0	67.5	21,620*	65.0	72.2	13,090*	75.0	65.6	15,340*	75.0	71.1	9,610*	80.0	65.8	12,360*	80.0	72.1	7,710*	
60.0	67.0	24,000*	60.0	70.7	18,690*	70.0	65.3	20,190*	70.0	69.9	12,560*	80.0	63.4	14,440*	80.0	68.8	9,230*	85.0	63.8	11,660*	85.0	70.0	7,420*	
65.0	64.5	22,440	65.0	68.2	17,900*	75.0	62.8	18,620	75.0	67.3	12,050*	85.0	61.2	13,640*	85.0	66.5	8,920*	90.0	61.7	11,040*	90.0	67.9	7,160*	
70.0	62.1	20,320	70.0	65.7	17,190*	80.0	60.4	17,060	80.0	64.9	11,640*	90.0	59.0	12,910*	90.0	64.2	8,610*	95.0	59.5	10,420*	95.0	65.5	6,900*	
75.0	59.4	18,400	75.0	62.9	16,510*	85.0	58.0	15,710	85.0	62.4	11,260*	95.0	56.5	12,230*	95.0	61.6	8,330*	100.0	57.3	9,920*	100.0	63.2	6,670*	
80.0	56.7	16,860	80.0	60.2	15,960*	90.0	55.5	14,500	90.0	59.8	10,910*	100.0	54.1	11,660*	100.0	59.1	8,090*	105.0	55.1	9,450*	105.0	60.9	6,450*	
85.0	54.0	15,520	85.0	57.4	15,450*	95.0	52.8	13,380	95.0	56.9	10,580*	105.0	51.6	11,150*	105.0	56.4	7,870*	110.0	52.7	9,030*	110.0	58.4	6,280*	
90.0	51.2	14,320	90.0	54.5	14,570	100.0	50.1	12,450	100.0	54.0	10,310*	110.0	49.0	10,670*	110.0	53.7	7,690*	115.0	50.2	8,610*	115.0	55.7	6,100*	
95.0	48.1	13,220	95.0	51.2	13,420	105.0	47.2	11,590	105.0	51.2	9,590	115.0	46.1	10,200*	115.0	51.2	7,400*	120.0	47.7	8,280*	120.0	53.1	5,950*	
100.0	45.0	12,270				110.0	44.3	10,840				120.0	43.2	9,590				125.0	45.1	7,950*				
105.0	41.7	11,460				115.0	40.9	10,110				125.0	40.2	9,010				130.0	42.3	7,670*				
110.0	38.1	10,690				120.0	37.4	9,470				130.0	36.8	8,480				135.0	39.4	7,400*				
115.0	34.0	9,980				125.0	33.7	8,860*				135.0	33.2	7,800*				140.0	35.9	7,140*				
Reeves	1		Reeves	1		Reeves	1		Reeves	1		Reeves	1		Reeves	1		Reeves	1		Reeves	1		

110' Boom																									
30 ft Jib						40 ft Jib						50 ft Jib						60 ft Jib							
0 set Angle (deg.)						0 set Angle (deg.)						0 set Angle (deg.)						0 set Angle (deg.)							
10			30			10			30			10			30			10		30					
Load Radius (ft)	Boom Angle (deg.)	Rated Load (lbs)	Load Radius (ft)	Boom Angle (deg.)	Rated Load (lbs)	Load Radius (ft)	Boom Angle (deg.)	Rated Load (lbs)	Load Radius (ft)	Boom Angle (deg.)	Rated Load (lbs)	Load Radius (ft)	Boom Angle (deg.)	Rated Load (lbs)	Load Radius (ft)	Boom Angle (deg.)	Rated Load (lbs)	Load Radius (ft)	Boom Angle (deg.)	Rated Load (lbs)	Load Radius (ft)	Boom Angle (deg.)	Rated Load (lbs)		
34.0	79.8	24,000*				38.0	79.9	24,000*				45.0	78.8	20,000*				45.0	80.0	18,000*					
36.0	79.0	24,000*				40.0	79.2	24,000*				50.0	76.9	20,000*				50.0	78.3	18,000*					
38.0	78.2	24,000*				45.0	77.2	24,000*				55.0	75.0	20,000*				55.0	76.4	18,000*					
40.0	77.3	24,000*				50.0	75.3	24,000*	50.0	79.9	15,360*	60.0	73.1	19,810*	60.0	78.5	11,150*	60.0	74.7	17,040*					
45.0	75.3	24,000*	45.0	79.0	21,000*	55.0	73.2	24,000*	55.0	77.7	14,610*	65.0	71.2	18,430*	65.0	76.5	10,670*	65.0	72.9	15,820*	65.0	79.1	8,970*		
50.0	73.2	24,000*	50.0	76.8	21,000*	60.0	71.2	24,000*	60.0	75.6	13,970*	70.0	69.3	17,230*	70.0	74.6	10,250*	70.0	71.1	14,770*	70.0	77.2	8,570*		
55.0	70.9	24,000*	55.0	74.5	20,100*	65.0	69.1	22,500	65.0	73.5	13,400*	75.0	67.2	16,110*	75.0	72.4	9,830*	75.0	69.2	13,800*	75.0	75.2	8,200*		
60.0	68.7	24,000*	60.0	72.2	19,220*	70.0	67.1	20,370	70.0	71.4	12,870*	80.0	65.2	15,160*	80.0	70.4	9,470*	80.0	67.3	12,960*	80.0	73.3	7,890*		
65.0	66.5	22,260	65.0	70.0	18,430*	75.0	64.8	18,450	75.0	69.1	12,380*	85.0	63.2	14,350*	85.0	68.3	9,140*	85.0	65.5	12,230*	85.0	71.4	7,580*		
70.0	64.3	20,150	70.0	67.7	17,700*	80.0	62.7	16,880	80.0	66.9	11,940*	90.0	61.2	13,600*	90.0	66.1	8,840*	90.0	63.6	11,590*	90.0	69.4	7,310*		
75.0	61.8	18,230	75.0	65.1	17,040*	85.0	60.5	15,520	85.0	64.6	11,570*	95.0	58.9	12,890*	95.0	63.8	8,550*	95.0	61.5	10,950*	95.0	67.2	7,050*		
80.0	59.4	16,680	80.0	62.7	16,460*	90.0	58.2	14,320	90.0	62.2	11,220*	100.0	56.7	12,300*	100.0	61.5	8,310*	100.0	59.5	10,420*	100.0	65.2	6,830*		
85.0	57.0	15,340	85.0	60.2	15,650	95.0	55.7	13,200	95.0	59.7	10,890*	105.0	54.5	11,530	105.0	59.2	8,090*	105.0	57.5	9,940*	105.0	63.0	6,630*		
90.0	54.5	14,150	90.0	57.6	14,440	100.0	53.3	12,250	100.0	57.1	10,600*	110.0	52.2	10,780	110.0	56.7	7,890*	110.0	55.4	9,500*	110.0	60.8	6,430*		
95.0	51.8	13,020	95.0	54.8	13,270	105.0	50.8	11,410	105.0	54.5	10,330*	115.0	49.6	10,030	115.0	54.0	7,690*	115.0	53.1	9,080*	115.0	58.4	6,260*		
100.0	49.1	12,100	100.0	52.0	12,320	110.0	48.2	10,640	110.0	51.8	10,110*	120.0	47.1	9,390				120.0	50.9	8,700*	120.0	56.1	6,100*		
105.0	46.3	11,260				115.0	45.3	9,920				125.0	44.5	8,810				125.0	48.6	8,370*	125.0	53.6	5,970*		
110.0	43.3	10,510				120.0	42.5	9,300				130.0	41.8	8,280				130.0	46.2	8,060*					
115.0	39.9	9,780				125.0	39.4	8,730				135.0	38.8	7,800				135.0	43.6	7,780*					
120.0	36.5	9,170				130.0	36.1	8,200				140.0	35.4	7,250*				140.0	40.8	7,380					
125.0	32.7	8,420*				135.0	32.5	7,420*										145.0	37.9	6,960					
																			150.0	34.8	6,370*				
Reeves	1		Reeves	1		Reeves	1		Reeves	1		Reeves	1		Reeves	1		Reeves	1		Reeves	1			

Note: Designed and rated to comply with ANSI Code B30.5

Capacities based on factors other than machine stability such as structural competence are shown by asterisk * in the charts.

STERLING CRANE

Fixed Jib Lift Capacity

Full Counterweight: 69,000 lbs Carbody Weight: 31,800

120' Boom																							
30 ft Jib						40 ft Jib						50 ft Jib						60 ft Jib					
O set Angle (deg.)						O set Angle (deg.)						O set Angle (deg.)						O set Angle (deg.)					
10			30			10			30			10			30			10			30		
Load Radius (ft)	Boom Angle (deg.)	Rated Load (lbs)	Load Radius (ft)	Boom Angle (deg.)	Rated Load (lbs)	Load Radius (ft)	Boom Angle (deg.)	Rated Load (lbs)	Load Radius (ft)	Boom Angle (deg.)	Rated Load (lbs)	Load Radius (ft)	Boom Angle (deg.)	Rated Load (lbs)	Load Radius (ft)	Boom Angle (deg.)	Rated Load (lbs)	Load Radius (ft)	Boom Angle (deg.)	Rated Load (lbs)	Load Radius (ft)	Boom Angle (deg.)	Rated Load (lbs)
36.0	79.7	24,000*				40.0	79.9	24,000*				45.0	79.5	20,000*				50.0	78.9	18,000*			
38.0	79.0	24,000*				45.0	78.1	24,000*				50.0	77.7	20,000*				55.0	77.2	18,000*			
40.0	78.2	24,000*				50.0	76.2	24,000*				55.0	75.9	20,000*				60.0	75.5	17,720*			
45.0	76.3	24,000*	45.0	79.7	21,000*	55.0	74.3	24,000*	55.0	78.5	14,880*	60.0	74.2	20,000*	60.0	79.2	11,330*	65.0	73.9	16,460*	65.0	79.7	9,080*
50.0	74.3	24,000*	50.0	77.7	21,000*	60.0	72.4	24,000*	60.0	76.6	14,240*	65.0	72.4	19,240*	65.0	77.4	10,860*	70.0	72.2	15,380*	70.0	78.0	8,700*
55.0	72.2	24,000*	55.0	75.6	20,560*	65.0	70.5	22,240*	65.0	74.7	13,690*	70.0	70.6	18,010*	70.0	75.6	10,420*	75.0	70.4	14,390*	75.0	76.1	8,350*
60.0	70.2	24,000*	60.0	73.5	19,680*	70.0	68.6	20,100*	70.0	72.7	13,160*	75.0	68.7	16,840*	75.0	73.6	10,030*	80.0	68.7	13,550*	80.0	74.4	8,040*
65.0	68.2	21,970*	65.0	71.4	18,910*	75.0	66.5	18,160*	75.0	70.6	12,670*	80.0	66.8	15,890*	80.0	71.7	9,670*	85.0	67.0	12,780*	85.0	72.6	7,730*
70.0	66.1	19,860*	70.0	69.3	18,180*	80.0	64.5	16,620*	80.0	68.5	12,250*	85.0	65.0	15,030*	85.0	69.7	9,340*	90.0	65.2	12,120*	90.0	70.7	7,470*
75.0	63.9	17,940*	75.0	67.0	17,500*	85.0	62.5	15,250*	85.0	66.4	11,860*	90.0	63.1	14,190*	90.0	67.8	9,060*	95.0	63.3	11,480*	95.0	68.7	7,230*
80.0	61.7	16,400*	80.0	64.8	16,790*	90.0	60.5	14,040*	90.0	64.3	11,500*	95.0	61.0	13,050*	95.0	65.6	8,770*	100.0	61.5	10,930*	100.0	66.8	7,010*
85.0	59.5	15,050*	85.0	62.6	15,410*	95.0	58.2	12,910*	95.0	62.0	11,170*	100.0	59.0	12,100*	100.0	63.6	8,500*	105.0	59.6	10,420*	105.0	64.9	6,790*
90.0	57.3	13,860*	90.0	60.2	14,170*	100.0	56.0	11,970*	100.0	59.7	10,860*	105.0	57.0	11,260*	105.0	61.4	8,280*	110.0	57.7	9,960*	110.0	62.9	6,610*
95.0	54.8	12,740*	95.0	57.7	13,020*	105.0	53.8	11,130*	105.0	57.4	10,600*	110.0	54.9	10,490*	110.0	59.3	8,060*	115.0	55.6	9,520*	115.0	60.7	6,410*
100.0	52.4	11,790*	100.0	55.2	12,050*	110.0	51.5	10,360*	110.0	55.0	10,360*	115.0	52.6	9,740*	115.0	56.8	7,870*	120.0	53.6	9,140*	120.0	58.6	6,260*
105.0	49.9	10,950*	105.0	52.6	11,170*	115.0	48.9	9,630*	115.0	52.3	9,870*	120.0	50.4	9,100*	120.0	54.5	7,690*	125.0	51.5	8,610*	125.0	56.4	6,100*
110.0	47.3	10,200*				120.0	46.5	8,990*				125.0	48.1	8,530*	125.0	52.1	7,530*	130.0	49.3	8,060*	130.0	54.1	5,970*
115.0	44.4	9,470*				125.0	43.8	8,420*				130.0	45.6	8,000*				135.0	47.1	7,580*	135.0	51.7	5,860*
120.0	41.6	8,860*				130.0	41.1	7,890*				135.0	43.1	7,510*				140.0	44.6	7,090*			
125.0	38.5	8,280*				135.0	38.1	7,420*				140.0	40.3	7,030*				145.0	42.2	6,670*			
130.0	35.2	7,690*				140.0	34.7	6,700*				145.0	37.4	6,540*				150.0	39.6	6,300*			
135.0	31.6	6,830*										150.0	34.3	5,880*				155.0	36.8	5,730*			
Reeves	1		Reeves	1		Reeves	1		Reeves	1		Reeves	1		Reeves	1		Reeves	1		Reeves	1	

130' Boom																							
30 ft Jib						40 ft Jib						50 ft Jib						60 ft Jib					
O set Angle (deg.)						O set Angle (deg.)						O set Angle (deg.)						O set Angle (deg.)					
10			30			10			30			10			30			10			30		
Load Radius (ft)	Boom Angle (deg.)	Rated Load (lbs)	Load Radius (ft)	Boom Angle (deg.)	Rated Load (lbs)	Load Radius (ft)	Boom Angle (deg.)	Rated Load (lbs)	Load Radius (ft)	Boom Angle (deg.)	Rated Load (lbs)	Load Radius (ft)	Boom Angle (deg.)	Rated Load (lbs)	Load Radius (ft)	Boom Angle (deg.)	Rated Load (lbs)	Load Radius (ft)	Boom Angle (deg.)	Rated Load (lbs)	Load Radius (ft)	Boom Angle (deg.)	Rated Load (lbs)
38.0	79.7	24,000*				45.0	78.8	24,000*				45.0	80.0	20,000*				50.0	79.5	18,000*			
40.0	79.0	24,000*				50.0	77.1	24,000*				50.0	78.4	20,000*				55.0	77.9	18,000*			
45.0	77.1	24,000*				55.0	75.2	24,000*	55.0	79.3	15,100*	55.0	76.7	20,000*				60.0	76.3	18,000*			
50.0	75.3	24,000*	50.0	78.5	21,000*	60.0	73.5	24,000*	60.0	77.5	14,500*	60.0	75.1	20,000*	60.0	79.9	11,480*	65.0	74.8	17,100*			
55.0	73.4	24,000*	55.0	76.5	20,980*	65.0	71.7	22,000*	65.0	75.7	13,930*	65.0	73.4	20,000*	65.0	78.2	11,020*	70.0	73.2	16,000*	70.0	78.7	8,840*
60.0	71.5	24,000*	60.0	74.6	20,120*	70.0	69.9	19,860*	70.0	73.8	13,420*	70.0	71.7	18,760*	70.0	76.5	10,620*	75.0	71.5	14,960*	75.0	76.9	8,480*
65.0	69.6	21,730*	65.0	72.7	19,350*	75.0	68.0	17,920*	75.0	71.8	12,940*	75.0	69.9	17,570*	75.0	74.6	10,200*	80.0	69.9	14,100*	80.0	75.3	8,170*
70.0	67.7	19,620*	70.0	70.7	18,650*	80.0	66.2	16,350*	80.0	69.9	12,520*	80.0	68.2	16,530*	80.0	72.8	9,850*	85.0	68.3	13,330*	85.0	73.6	7,890*
75.0	65.6	17,680*	75.0	68.6	17,960*	85.0	64.3	14,990*	85.0	68.0	12,140*	85.0	66.5	15,160*	85.0	71.0	9,540*	90.0	66.6	12,630*	90.0	71.9	7,620*
80.0	63.7	16,130*	80.0	66.6	16,600*	90.0	62.4	13,800*	90.0	66.1	11,770*	90.0	64.7	13,950*	90.0	69.2	9,230*	95.0	64.8	11,970*	95.0	70.0	7,360*
85.0	61.6	14,790*	85.0	64.5	15,180*	95.0	60.3	12,650*	95.0	63.9	11,440*	95.0	62.8	12,800*	95.0	67.2	8,950*	100.0	63.1	11,410*	100.0	68.3	7,140*
90.0	59.6	13,600*	90.0	62.4	13,950*	100.0	58.3	11,700*	100.0	61.9	11,130*	100.0	61.0	11,860*	100.0	65.3	8,700*	105.0	61.4	10,890*	105.0	66.5	6,940*
95.0	57.3	12,470*	95.0	60.1	12,780*	105.0	56.3	10,860*	105.0	59.8	10,860*	105.0	59.1	11,000*	105.0	63.4	8,480*	110.0	59.6	10,310*	110.0	64.6	6,740*
100.0	55.2	11,530*	100.0	57.9	11,810*	110.0	54.2	10,090*	110.0	57.6	10,420*	110.0	57.2	10,220*	110.0	61.4	8,260*	115.0	57.7	9,560*	115.0	62.6	6,560*
105.0	52.9	10,690*	105.0	55.6	10,950*	115.0	51.9	9,360*	115.0	55.2	9,650*	115.0	55.1	9,470*	115.0	59.2	8,040*	120.0	55.9	8,920*	120.0	60.7	6,390*
110.0	50.6	9,940*	110.0	53.2	10,160*	120.0	49.7	8,730*	120.0	52.9	8,990*	120.0	53.1	8,840*	120.0	57.1	7,870*	125.0	54.0	8,350*	125.0	58.7	6,230*
115.0	48.1	9,210*				125.0	47.4	8,150*				125.0	51.0	8,260*	125.0	54.9	7,710*	130.0	52.0	7,820*	130.0	56.6	6,100*
120.0	45.6	8,570*				130.0	45.0	7,620*				130.0	48.8	7,730*	130.0	52.6	7,560*	135.0	50.0	7,310*	135.0	54.5	5,970*
125.0	43.0	8,020*				135.0	42.5	7,140*				135.0	46.6	7,250*				140.0	47.8	6,830*	140.0	52.2	5,860*
130.0	40.2	7,490*				140.0	39.6	6,670*				140.0	44.1	6,760*				145.0	45.6	6,410*			
135.0	37.3	6,940*				145.0	36.8	6,040*				145.0	41.7	6,340*				150.0	43.3	6,040*			
140.0	33.9	6,150*				150.0	33.7	5,370*				150.0	39.1	5,860*				155.0	41.0	5,620*			
												155.0	36.3	5,260*				160.0	38.3	5,040*			
												160.0	33.1	4,650*				170.0	32.7	4,010*			
Reeves	1		Reeves	1		Reeves	1		Reeves	1		Reeves	1		Reeves	1		Reeves	1		Reeves	1	

Note: Designed and rated to comply with ANSI Code B30.5

Capacities based on factors other than machine stability such as structural competence are shown by asterisk * in the charts.

STERLING CRANE

Fixed Jib Lift Capacity

Full Counterweight: 69,000 lbs Carbody Weight: 31,800

140' Boom																							
30 ft Jib						40 ft Jib						50 ft Jib						60 ft Jib					
O set Angle (deg.)						O set Angle (deg.)						O set Angle (deg.)						O set Angle (deg.)					
10			30			10			30			10			30			10			30		
Load Radius (ft)	Boom Angle (deg.)	Rated Load (lbs)	Load Radius (ft)	Boom Angle (deg.)	Rated Load (lbs)	Load Radius (ft)	Boom Angle (deg.)	Rated Load (lbs)	Load Radius (ft)	Boom Angle (deg.)	Rated Load (lbs)	Load Radius (ft)	Boom Angle (deg.)	Rated Load (lbs)	Load Radius (ft)	Boom Angle (deg.)	Rated Load (lbs)	Load Radius (ft)	Boom Angle (deg.)	Rated Load (lbs)	Load Radius (ft)	Boom Angle (deg.)	Rated Load (lbs)
40.0	79.6	24,000*				45.0	79.4	24,000*				50.0	79.1	20,000*				55.0	78.5	18,000*			
45.0	77.9	24,000*				50.0	77.8	24,000*				55.0	77.4	20,000*				60.0	77.0	18,000*			
50.0	76.2	24,000*	50.0	79.2	21,000*	55.0	76.1	24,000*				60.0	75.9	20,000*				65.0	75.6	17,700*			
55.0	74.4	24,000*	55.0	77.4	21,000*	60.0	74.4	24,000*	60.0	78.2	14,720*	65.0	74.3	20,000*	65.0	78.8	11,170*	70.0	74.1	16,570*	70.0	79.3	8,950*
60.0	72.6	23,980	60.0	75.6	20,540*	65.0	72.8	21,730	65.0	76.5	14,170*	70.0	72.8	19,480*	70.0	77.2	10,780*	75.0	72.5	15,520*	75.0	77.7	8,590*
65.0	70.9	21,450	65.0	73.8	19,770*	70.0	71.1	19,590	70.0	74.8	13,690*	75.0	71.1	17,850	75.0	75.5	10,380*	80.0	71.0	14,630*	80.0	76.1	8,310*
70.0	69.1	19,330	70.0	72.0	19,060*	75.0	69.3	17,650	75.0	72.9	13,180*	80.0	69.4	16,260	80.0	73.8	10,030*	85.0	69.4	13,840*	85.0	74.5	8,020*
75.0	67.2	17,390	75.0	70.0	17,940	80.0	67.6	16,090	80.0	71.2	12,760*	85.0	67.8	14,880	85.0	72.1	9,720*	90.0	67.9	13,130*	90.0	72.9	7,760*
80.0	65.3	15,850	80.0	68.1	16,330	85.0	65.9	14,720	85.0	69.4	12,380*	90.0	66.2	13,660	90.0	70.4	9,430*	95.0	66.2	12,450*	95.0	71.2	7,510*
85.0	63.5	14,480	85.0	66.2	14,940	90.0	64.1	13,510	90.0	67.6	12,030*	95.0	64.4	12,520	95.0	68.6	9,120*	100.0	64.6	11,680	100.0	69.5	7,270*
90.0	61.6	13,290	90.0	64.3	13,690	95.0	62.2	12,360	95.0	65.6	11,680*	100.0	62.7	11,570	100.0	66.8	8,880*	105.0	63.0	10,820	105.0	67.8	7,070*
95.0	59.5	12,160	95.0	62.2	12,540	100.0	60.3	11,410	100.0	63.7	11,370*	105.0	60.9	10,710	105.0	65.0	8,660*	110.0	61.4	10,050	110.0	66.1	6,870*
100.0	57.5	11,220	100.0	60.1	11,550	105.0	58.5	10,580	105.0	61.8	10,970	110.0	59.2	9,940	110.0	63.2	8,440*	115.0	59.6	9,300	115.0	64.3	6,700*
105.0	55.5	10,380	105.0	58.1	10,690	110.0	56.6	9,810	110.0	59.8	10,180	115.0	57.3	9,190	115.0	61.2	8,220*	120.0	57.9	8,660	120.0	62.5	6,520*
110.0	53.4	9,630	110.0	55.9	9,890	115.0	54.5	9,060	115.0	57.6	9,410	120.0	55.4	8,550	120.0	59.3	8,040*	125.0	56.1	8,060	125.0	60.7	6,370*
115.0	51.1	8,900	115.0	53.5	9,120	120.0	52.5	8,420	120.0	55.5	8,730	125.0	53.5	7,980	125.0	57.3	7,870*	130.0	54.3	7,530	130.0	58.8	6,230*
120.0	48.9	8,260	120.0	51.3	8,480	125.0	50.4	7,840	125.0	53.4	8,130	130.0	51.6	7,450	130.0	55.3	7,710*	135.0	52.5	7,030	135.0	56.9	6,100*
125.0	46.6	7,690				130.0	48.2	7,310				135.0	49.5	6,940	135.0	53.1	7,250	140.0	50.5	6,540	140.0	54.7	5,970*
130.0	44.2	7,180				135.0	46.0	6,830				140.0	47.3	6,450				145.0	48.5	6,120	145.0	52.7	5,860*
135.0	41.7	6,700				140.0	43.5	6,370				145.0	45.1	6,040				150.0	46.5	5,730			
140.0	38.8	6,060*				145.0	41.1	5,880*				150.0	42.9	5,640*				155.0	44.4	5,350*			
145.0	36.0	5,400*				150.0	38.5	5,290*				155.0	40.5	5,090*				160.0	42.0	4,820*			
150.0	32.9	4,760*				155.0	35.7	4,690*				160.0	37.8	4,540*				165.0	39.7	4,340*			
						160.0	32.5	4,070*				170.0	32.2	3,500*				175.0	34.7	3,410*			
Reeves	1		Reeves	1		Reeves	1		Reeves	1		Reeves	1		Reeves	1		Reeves	1		Reeves	1	

150' Boom																							
30 ft Jib						40 ft Jib						50 ft Jib						60 ft Jib					
O set Angle (deg.)						O set Angle (deg.)						O set Angle (deg.)						O set Angle (deg.)					
10			30			10			30			10			30			10			30		
Load Radius (ft)	Boom Angle (deg.)	Rated Load (lbs)	Load Radius (ft)	Boom Angle (deg.)	Rated Load (lbs)	Load Radius (ft)	Boom Angle (deg.)	Rated Load (lbs)	Load Radius (ft)	Boom Angle (deg.)	Rated Load (lbs)	Load Radius (ft)	Boom Angle (deg.)	Rated Load (lbs)	Load Radius (ft)	Boom Angle (deg.)	Rated Load (lbs)	Load Radius (ft)	Boom Angle (deg.)	Rated Load (lbs)	Load Radius (ft)	Boom Angle (deg.)	Rated Load (lbs)
45.0	78.6	24,000*				45.0	80.0	24,000*				50.0	79.6	20,000*				55.0	79.1	18,000*			
50.0	77.0	24,000*	50.0	79.9	21,000*	50.0	78.5	24,000*				55.0	78.1	20,000*				60.0	77.7	18,000*			
55.0	75.3	24,000*	55.0	78.1	21,000*	55.0	76.8	24,000*				60.0	76.6	20,000*				65.0	76.3	18,000*			
60.0	73.6	23,800	60.0	76.4	20,890*	60.0	75.3	24,000*	60.0	78.9	14,920*	65.0	75.1	20,000*	65.0	79.4	11,330*	70.0	74.9	17,120*	70.0	79.9	9,060*
65.0	72.0	21,270	65.0	74.8	20,150*	65.0	73.7	21,580	65.0	77.3	14,390*	70.0	73.7	19,640	70.0	77.9	10,930*	75.0	73.4	16,040*	75.0	78.3	8,700*
70.0	70.3	19,150	70.0	73.1	19,440*	70.0	72.1	19,420	70.0	75.7	13,910*	75.0	72.1	17,680	75.0	76.3	10,530*	80.0	71.9	15,160*	80.0	76.8	8,420*
75.0	68.5	17,210	75.0	71.2	17,810	75.0	70.5	17,480	75.0	73.9	13,420*	80.0	70.5	16,090	80.0	74.7	10,200*	85.0	70.5	14,350*	85.0	75.3	8,130*
80.0	66.8	15,670	80.0	69.5	16,200	80.0	68.8	15,890	80.0	72.3	13,000*	85.0	69.0	14,700	85.0	73.1	9,870*	90.0	69.0	13,620	90.0	73.8	7,890*
85.0	65.1	14,300	85.0	67.7	14,790	85.0	67.2	14,520	85.0	70.6	12,630*	90.0	67.5	13,490	90.0	71.5	9,590*	95.0	67.4	12,450	95.0	72.2	7,620*
90.0	63.3	13,110	90.0	65.9	13,530	90.0	65.6	13,310	90.0	68.9	12,270*	95.0	65.8	12,340	95.0	69.8	9,300*	100.0	65.9	11,500	100.0	70.6	7,400*
95.0	61.4	11,990	95.0	63.9	12,360	95.0	63.8	12,190	95.0	67.1	11,920*	100.0	64.2	11,390	100.0	68.2	9,060*	105.0	64.4	10,640	105.0	69.1	7,200*
100.0	59.6	11,040	100.0	62.1	11,390	100.0	62.1	11,240	100.0	65.3	11,610*	105.0	62.6	10,530	105.0	66.5	8,810*	110.0	62.9	9,850	110.0	67.5	7,010*
105.0	57.7	10,200	105.0	60.2	10,510	105.0	60.3	10,380	105.0	63.5	10,820	110.0	60.9	9,760	110.0	64.8	8,590*	115.0	61.2	9,100	115.0	65.7	6,830*
110.0	55.8	9,430	110.0	58.2	9,720	110.0	58.6	9,610	110.0	61.7	10,030	115.0	59.1	9,010	115.0	62.9	8,390*	120.0	59.6	8,460	120.0	64.1	6,650*
115.0	53.7	8,700	115.0	56.1	8,970	115.0	56.7	8,860	115.0	59.7	9,230	120.0	57.4	8,370	120.0	61.2	8,200*	125.0	58.0	7,870	125.0	62.4	6,500*
120.0	51.7	8,090	120.0	54.0	8,310	120.0	54.8	8,240	120.0	57.8	8,570	125.0	55.7	7,780	125.0	59.3	8,020*	130.0	56.3	7,340	130.0	60.7	6,370*
125.0	49.6	7,510	125.0	51.8	7,710	125.0	52.9	7,670	125.0	55.8	7,950	130.0	53.9	7,250	130.0	57.5	7,620	135.0	54.6	6,830	135.0	58.9	6,210*
130.0	47.5	6,980				130.0	51.0	7,140	130.0	53.8	7,400	135.0	52.0	6,740	135.0	55.6	7,090	140.0	52.8	6,340	140.0	57.0	6,080*
135.0	45.3	6,500				135.0	49.0	6,630				140.0	50.0	6,260	140.0	53.4	6,590	145.0	51.0	5,930	145.0	55.1	5,970*
140.0	42.8	6,010*				140.0	46.7	6,170				145.0	48.1	5,840				150.0	49.2	5,530	150.0	53.1	5,880
145.0	40.3	5,420*				145.0	44.6	5,750				150.0	46.0	5,460				155.0	47.3	5,150*			
150.0	37.8	4,820*				150.0	42.3	5,220*				155.0	43.9	4,980*				160.0	45.2	4,670*			
155.0	35.0	4,250*				155.0	39.9	4,690*				160.0	41.6	4,450*				165.0	43.1	4,230*			
160.0	31.8	3,650*				160.0	37.3	4,140*				165.0	39.3	3,990*				170.0	41.0	3,790*			
						165.0	34.6	3,610*				170.0	36.8	3,520*				175.0	38.7	3,370*			
Reeves	1		Reeves	1		Reeves	1		Reeves	1		Reeves	1		Reeves	1		Reeves	1		Reeves	1	

Note: Designed and rated to comply with ANSI Code B30.5

Capacities based on factors other than machine stability such as structural competence are shown by asterisk * in the charts.

STERLING CRANE

Fixed Jib Lift Capacity

Full Counterweight: 69,000 lbs Carbody Weight: 31,800

180' Boom																									
30 ft Jib						40 ft Jib						50 ft Jib						60 ft Jib							
O set Angle (deg.)						O set Angle (deg.)						O set Angle (deg.)						O set Angle (deg.)							
10			30			10			30			10			30			10			30				
Load Radius (ft)	Boom Angle (deg.)	Rated Load (lbs)	Load Radius (ft)	Boom Angle (deg.)	Rated Load (lbs)	Load Radius (ft)	Boom Angle (deg.)	Rated Load (lbs)	Load Radius (ft)	Boom Angle (deg.)	Rated Load (lbs)	Load Radius (ft)	Boom Angle (deg.)	Rated Load (lbs)	Load Radius (ft)	Boom Angle (deg.)	Rated Load (lbs)	Load Radius (ft)	Boom Angle (deg.)	Rated Load (lbs)	Load Radius (ft)	Boom Angle (deg.)	Rated Load (lbs)		
50.0	78.9	22,200*				55.0	78.7	21,670*				55.0	79.7	20,000*				60.0	79.3	18,000*					
55.0	77.4	21,750*	55.0	79.9	21,000*	60.0	77.3	21,270*				60.0	78.4	20,000*				65.0	78.0	18,000*					
60.0	76.0	21,360*	60.0	78.5	20,870*	65.0	76.0	20,870*	65.0	79.1	14,940*	65.0	77.1	20,000*				70.0	76.8	18,000*					
65.0	74.6	20,700	65.0	77.1	20,500*	70.0	74.7	18,840	70.0	77.7	14,480*	70.0	75.9	19,060	70.0	79.6	11,300*	75.0	75.5	17,230	75.0	79.9	8,990*		
70.0	73.2	18,560	70.0	75.6	19,310	75.0	73.2	16,880	75.0	76.3	14,020*	75.0	74.5	17,100	75.0	78.2	10,930*	80.0	74.3	15,650	80.0	78.6	8,700*		
75.0	71.7	16,600	75.0	74.1	17,300	80.0	71.9	15,290	80.0	74.9	13,620*	80.0	73.2	15,490	80.0	76.9	10,600*	85.0	73.0	14,240	85.0	77.3	8,460*		
80.0	70.3	15,030	80.0	72.6	15,670	85.0	70.5	13,910	85.0	73.5	13,240*	85.0	71.9	14,100	85.0	75.5	10,310*	90.0	71.8	13,020	90.0	76.0	8,200*		
85.0	68.8	13,660	85.0	71.2	14,240	90.0	69.1	12,690	90.0	72.1	12,890*	90.0	70.6	12,890	90.0	74.2	10,030*	95.0	70.4	11,860	95.0	74.6	7,950*		
90.0	67.4	12,470	90.0	69.7	13,000	95.0	67.6	11,550	95.0	70.5	12,210	95.0	69.2	11,720	95.0	72.7	9,740*	100.0	69.2	10,890	100.0	73.3	7,760*		
95.0	65.8	11,330	95.0	68.1	11,810	100.0	66.2	10,600	100.0	69.1	11,190	100.0	67.8	10,750	100.0	71.4	9,500*	105.0	67.9	10,000	105.0	72.0	7,530*		
100.0	64.3	10,380	100.0	66.5	10,820	105.0	64.8	9,740	105.0	67.6	10,290	105.0	66.5	9,890	105.0	70.0	9,280*	110.0	66.6	9,230	110.0	70.7	7,360*		
105.0	62.8	9,540	105.0	65.0	9,940	110.0	63.3	8,970	110.0	66.1	9,470	110.0	65.1	9,100	110.0	68.5	9,060*	115.0	65.2	8,460	115.0	69.2	7,160*		
110.0	61.3	8,770	110.0	63.4	9,140	115.0	61.8	8,200	115.0	64.5	8,680	115.0	63.6	8,350	115.0	67.0	8,840*	120.0	63.8	7,820	120.0	67.8	7,010*		
115.0	59.6	8,020	115.0	61.7	8,370	120.0	60.3	7,560	120.0	63.0	8,000	120.0	62.2	7,710	120.0	65.6	8,280	125.0	62.5	7,230	125.0	66.4	6,850*		
120.0	58.0	7,380	120.0	60.1	7,710	125.0	58.8	6,980	125.0	61.4	7,380	125.0	60.8	7,120	125.0	64.1	7,640	130.0	61.1	6,670	130.0	65.0	6,700*		
125.0	56.4	6,810	125.0	58.4	7,090	130.0	57.2	6,430	130.0	59.8	6,830	130.0	59.3	6,560	130.0	62.6	7,070	135.0	59.7	6,150*	135.0	63.6	6,540*		
130.0	54.7	6,280	130.0	56.8	6,540	135.0	55.6	5,950	135.0	58.2	6,300	135.0	57.8	6,080	135.0	61.1	6,540	140.0	58.2	5,590*	140.0	62.0	6,210		
135.0	53.0	5,770*	135.0	55.0	6,040	140.0	53.9	5,370*	140.0	56.4	5,770	140.0	56.2	5,510*	140.0	59.4	6,010	145.0	56.8	5,110*	145.0	60.5	5,700*		
140.0	51.2	5,180*	140.0	53.1	5,480*	145.0	52.3	4,870*	145.0	54.7	5,260*	145.0	54.7	5,020*	145.0	57.8	5,510*	150.0	55.3	4,620*	150.0	59.0	5,220*		
145.0	49.4	4,650*	145.0	51.3	4,960*	150.0	50.6	4,380*	150.0	53.0	4,760*	150.0	53.1	4,540*	150.0	56.2	5,020*	155.0	53.8	4,210*	155.0	57.5	4,760*		
150.0	47.6	4,160*				155.0	48.8	3,920*				155.0	51.5	4,100*	155.0	54.5	4,560*	160.0	52.2	3,760*	160.0	55.8	4,290*		
155.0	45.7	3,680*				160.0	46.9	3,460*				160.0	49.8	3,630*	160.0	52.7	4,070*	165.0	50.6	3,370*	165.0	54.1	3,880*		
160.0	43.6	3,210*				165.0	45.1	3,040*				165.0	48.1	3,240*							170.0	52.4	3,480*		
Reeves	1	Reeves	1	Reeves	1	Reeves	1	Reeves	1	Reeves	1	Reeves	1	Reeves	1	Reeves	1	Reeves	1	Reeves	1	Reeves	1	Reeves	1

190' Boom																									
30 ft Jib						40 ft Jib						50 ft Jib						60 ft Jib							
O set Angle (deg.)						O set Angle (deg.)						O set Angle (deg.)						O set Angle (deg.)							
10			30			10			30			10			30			10			30				
Load Radius (ft)	Boom Angle (deg.)	Rated Load (lbs)	Load Radius (ft)	Boom Angle (deg.)	Rated Load (lbs)	Load Radius (ft)	Boom Angle (deg.)	Rated Load (lbs)	Load Radius (ft)	Boom Angle (deg.)	Rated Load (lbs)	Load Radius (ft)	Boom Angle (deg.)	Rated Load (lbs)	Load Radius (ft)	Boom Angle (deg.)	Rated Load (lbs)	Load Radius (ft)	Boom Angle (deg.)	Rated Load (lbs)	Load Radius (ft)	Boom Angle (deg.)	Rated Load (lbs)		
50.0	79.4	19,440*				55.0	79.2	18,950*				60.0	78.9	18,470*				60.0	79.7	18,000*					
55.0	78.0	19,020*				60.0	77.9	18,560*				65.0	77.7	18,070*				65.0	78.5	17,960*					
60.0	76.7	18,620*	60.0	79.0	18,250*	65.0	76.6	18,160*	65.0	79.6	15,100*	70.0	76.5	17,700*				70.0	77.4	17,590*					
65.0	75.4	18,250*	65.0	77.7	17,870*	70.0	75.4	17,810*	70.0	78.3	14,660*	75.0	75.2	16,930	75.0	78.7	11,040*	75.0	76.1	17,080					
70.0	74.0	17,870*	70.0	76.3	17,520*	75.0	74.0	16,710	75.0	76.9	14,190*	80.0	73.9	15,320	80.0	77.5	10,730*	80.0	74.9	15,470	80.0	79.1	8,790*		
75.0	72.6	16,420	75.0	74.9	17,150	80.0	72.7	15,120	80.0	75.6	13,800*	85.0	72.7	13,930	85.0	76.2	10,420*	85.0	73.8	14,060	85.0	77.9	8,550*		
80.0	71.2	14,850	80.0	73.5	15,520	85.0	71.4	13,730	85.0	74.3	13,420*	90.0	71.4	12,690	90.0	74.9	10,160*	90.0	72.6	12,830	90.0	76.6	8,310*		
85.0	69.9	13,490	85.0	72.1	14,080	90.0	70.1	12,520	90.0	72.9	13,090*	95.0	70.1	11,550	95.0	73.5	9,870*	95.0	71.3	11,680	95.0	75.3	8,060*		
90.0	68.5	12,270	90.0	70.7	12,850	95.0	68.7	11,370	95.0	71.5	12,050	100.0	68.8	10,580	100.0	72.2	9,630*	100.0	70.1	10,710	100.0	74.1	7,840*		
95.0	67.0	11,150	95.0	69.2	11,660	100.0	67.3	10,420	100.0	70.1	11,040	105.0	67.5	9,720	105.0	70.9	9,410*	105.0	68.8	9,830	105.0	72.8	7,640*		
100.0	65.6	10,200	100.0	67.7	10,670	105.0	66.0	9,540	105.0	68.7	10,140	110.0	66.2	8,920	110.0	69.6	9,190*	110.0	67.6	9,030	110.0	71.5	7,450*		
105.0	64.1	9,340	105.0	66.3	9,780	110.0	64.6	8,770	110.0	67.3	9,320	115.0	64.8	8,170	115.0	68.1	8,810	115.0	66.3	8,260*	115.0	70.2	7,270*		
110.0	62.7	8,570	110.0	64.8	8,970	115.0	63.1	8,020	115.0	65.8	8,530	120.0	63.5	7,510	120.0	66.7	8,130	120.0	65.0	7,580*	120.0	68.9	7,090*		
115.0	61.1	7,840	115.0	63.2	8,200	120.0	61.7	7,380	120.0	64.3	7,840	125.0	62.1	6,900*	125.0	65.3	7,490	125.0	63.7	6,940*	125.0	67.5	6,940*		
120.0	59.6	7,200	120.0	61.7	7,530	125.0	60.3	6,790	125.0	62.9	7,230	130.0	60.8	6,300*	130.0	63.9	6,870*	130.0	62.4	6,370*	130.0	66.2	6,790*		
125.0	58.1	6,630	125.0	60.1	6,940	130.0	58.8	6,190*	130.0	61.4	6,650	135.0	59.4	5,750*	135.0	62.5	6,300*	135.0	61.1	5,820*	135.0	64.8	6,480*		
130.0	56.6	6,040*	130.0	58.5	6,370	135.0	57.4	5,640*	135.0	59.9	6,080*	140.0	57.9	5,200*	140.0	60.9	5,730*	140.0	59.7	5,260*	140.0	63.4	5,900*		
135.0	55.0	5,460*	135.0	56.9	5,790*	140.0	55.8	5,070*	140.0	58.2	5,510*	145.0	56.4	4,710*	145.0	59.5	5,220*	145.0	58.3	4,780*	145.0	62.0	5,400*		
140.0	53.3	4,890*	140.0	55.2	5,220*	145.0	54.2	4,580*	145.0	56.6	4,980*	150.0	55.0	4,250*	150.0	57.9	4,730*	150.0	56.9	4,340*	150.0	60.5	4,930*		
145.0	51.6	4,380*	145.0	53.5	4,690*	150.0	52.7	4,120*	150.0	55.0	4,490*	155.0	53.5	3,810*	155.0	56.4	4,290*	155.0	55.5	3,900*	155.0	59.1	4,470*		
150.0	50.0	3,920*	150.0	51.8	4,210*	155.0	51.0	3,680*	155.0	53.4	4,030*	160.0	51.8	3,370*	160.0	54.7	3,830*	160.0	54.0	3,480*	160.0	57.5	4,030*		
155.0	48.2	3,460*				160.0	49.3	3,210*							165.0	53.1	3,410*	165.0	52.6	3,080*	165.0	56.0	3,610*		
Reeves	1	Reeves	1	Reeves	1	Reeves	1	Reeves	1	Reeves	1	Reeves	1	Reeves	1	Reeves	1	Reeves	1	Reeves	1	Reeves	1	Reeves	1

Note: Designed and rated to comply with ANSI Code B30.5

Capacities based on factors other than machine stability such as structural competence are shown by asterisk * in the charts.

STERLING CRANE

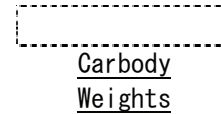
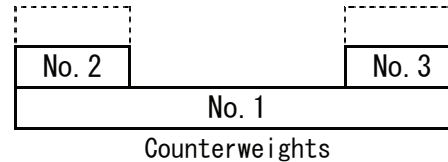
Supplemental Data - Clamshell

1. Rated loads included in the charts are the maximum allowable freely suspended loads at a given boom length, boom angle and load radius, and have been determined for the machine standing level on firm supporting surface under ideal operating conditions. The user must limit or de-rate rated loads to allow for adverse conditions (such as soft or uneven ground, out-of-level conditions, wind, side loads, pendulum action, jerking or sudden stopping of loads, inexperience of personnel, multiple machine lifts, and traveling with a load).
2. Rated loads do not exceed 66% of minimum tipping loads. Rated loads based on factors other than machine stability such as structural competence are shown by asterisk * in the charts.
3. The machine must be reeved and set-up as stated in the operation manual and all the instruction manuals if these manuals are missing, obtain replacements.
 - Machine shall be positively secured to prevent shifting.
 - Boom backstops are required for all boom length.
 - Gantry must be fully raised position for all operations.
 - Crawlers must be fully extended and be locked in position.
 - Must have 43,600 lbs (2) Counterweights installed, and without carbody weights.
4. Do not attempt to lift where no radius on load is listed as crane may tip or collapse.
5. Attempting to lift more than rated loads may cause machine to tip or collapse. Do not tip machine to determine rated loads.
6. Weight of hooks, hook blocks, slings and other lifting devices are a part of the total load. Their total weight must be subtracted from the rated load to obtain the weight that can be lifted.
7. The boom should be erected over the front of the crawlers, not laterally.
8. Least stable position is over the side.
9. Maximum hoist load for number of reeving parts of line for hoist rope.

Maximum Load for Main Boom

No. of Parts of line	1
Maximum Loads (lbs)	22,000

10. Rated loads listed apply only to the machine as originally manufactured and designed by KOBELCO CRANES CO., LTD. Modifications to this machine or use of equipment other than that specified can reduce operating capacity.
11. Assembling the Counterweight
43,600 lbs counterweight (No. 1 ~ No. 3)
Without Carbody weights



Operation of this equipment in excess of rated loads or disregard of instruction voids the warranty.

STERLING CRANE

Clamshell

Boom:

Welded lattice construction using tubular, high-tensile steel chords with pin connections between each section.

Basic boom length: 40 ft (12.2 m)

Max. boom length: 120 ft (36.6 m)

Limit on clamshell bucket weight: 4,600 lbs (2,100 kg)

Optional tagline: Hydraulic operated type and spring type.

Boom Component Chart:

Boom length ft (m)	Boom arrangement
40 (12.2)	Base-Tip
50 (15.2)	Base-A-Tip
60 (18.3)	Base-A-A-Tip, Base-B-Tip
70 (21.3)	Base-A-B-Tip
80 (24.4)	Base-A-A-B-Tip, Base-B-B-Tip
90 (27.4)	Base-A-C-Tip
100 (30.5)	Base-A-A-B-B-Tip, Base-A-A-C-Tip
110 (33.5)	Base-A-B-C-Tip
120 (36.6)	Base-A-A-B-C-Tip, Base-B-B-C-Tip

Base = Boom Base

Insert: A = 10 ft (3.05 m)

B = 20 ft (6.10 m)

C = 40 ft (12.2 m)

Tip = Boom Tip

1. Figures represent maximum allowable capacity, and assume level, ground and ideal working conditions.
2. Capacities are calculated at 66% of the minimum tipping loads.
3. Capacities are maximum recommended by PCSA Standard #4. Allowances must be made by the user for such unfavorable conditions as a sort of uneven supporting surface, rapid cycle operations, or bucket.
4. The combined weight of the bucket and load must not exceed these capacities.

3 Counterweights (43,600 lbs) - Without Carbody weights - Crawlers in extended position.

40' Boom			50' Boom			60' Boom		
Load Radius (ft)	Boom Angle (deg.)	360° Rated Load (lbs)	Load Radius (ft)	Boom Angle (deg.)	360° Rated Load (lbs)	Load Radius (ft)	Boom Angle (deg.)	360° Rated Load (lbs)
22.0	63.7	22,000 *	26.0	64.3	22,000 *	30.0	64.6	22,000 *
24.0	60.5	22,000 *	28.0	61.7	22,000 *	32.0	62.5	22,000 *
26.0	57.1	22,000 *	30.0	59.0	22,000 *	34.0	60.3	21,400 *
28.0	53.5	22,000 *	32.0	56.3	22,000 *	36.0	58.1	20,200 *
30.0	49.8	22,000 *	34.0	53.5	21,400 *	38.0	55.8	19,200 *
32.0	45.9	22,000 *	36.0	50.5	20,200 *	40.0	53.4	18,200 *
34.0	41.7	21,400 *	38.0	47.4	19,200 *	42.0	51.0	17,300 *
36.0	37.0	20,200 *	40.0	44.2	18,200 *	44.0	48.4	16,500 *
38.0	31.8	19,200 *	42.0	40.7	17,300 *	46.0	45.8	15,800 *
40.0	25.7	18,200 *	44.0	37.0	16,500 *	48.0	43.0	15,200 *
			46.0	32.9	15,800 *	50.0	40.1	14,600 *
			48.0	28.3	15,200 *	52.0	37.0	14,000 *
						54.0	33.6	13,500 *
						56.0	29.9	13,000 *
						58.0	25.7	12,500 *

Refer to notes on page 29.

STERLING CRANE

Clamshell

3 Counterweights (43,600 lbs) - Without Carbody weights - Crawlers in extended position.

70' Boom			80' Boom			90' Boom		
Load Radius (ft)	Boom Angle (deg.)	360° Rated Load (lbs)	Load Radius (ft)	Boom Angle (deg.)	360° Rated Load (lbs)	Load Radius (ft)	Boom Angle (deg.)	360° Rated Load (lbs)
34.0	64.9	21,400 *	38.0	65.1	19,200 *	42.0	65.2	17,300 *
36.0	63.1	20,200 *	40.0	63.5	18,200 *	44.0	63.8	16,500 *
38.0	61.2	19,200 *	42.0	61.9	17,300 *	46.0	62.4	15,800 *
40.0	59.3	18,200 *	44.0	60.2	16,500 *	48.0	60.9	15,200 *
42.0	57.4	17,300 *	46.0	58.6	15,800 *	50.0	59.5	14,600 *
44.0	55.4	16,500 *	48.0	56.9	15,200 *	52.0	58.0	14,000 *
46.0	53.4	15,800 *	50.0	55.1	14,600 *	54.0	56.4	13,500 *
48.0	51.3	15,200 *	52.0	53.3	14,000 *	56.0	54.9	13,000 *
50.0	49.1	14,600 *	54.0	51.5	13,500 *	58.0	53.3	12,500 *
52.0	46.9	14,000 *	56.0	49.6	13,000 *	60.0	51.7	12,100 *
54.0	44.6	13,500 *	58.0	47.7	12,500 *	62.0	50.0	11,700 *
56.0	42.2	13,000 *	60.0	45.7	12,100 *	64.0	48.3	11,400 *
58.0	39.6	12,500 *	62.0	43.7	11,700 *	66.0	46.6	11,000 *
60.0	37.0	12,100 *	64.0	41.5	11,400 *	68.0	44.8	10,700 *
62.0	34.1	11,700 *	66.0	39.3	11,000 *	70.0	43.0	10,400 *
64.0	31.0	11,400 *	68.0	37.0	10,700 *	72.0	41.0	10,100 *
66.0	27.6	11,000 *	70.0	34.5	10,400 *	74.0	39.0	9,700
			72.0	31.8	10,100 *	76.0	36.9	9,200
			74.0	28.9	9,800 *	78.0	34.7	9,000
			76.0	25.7	9,400 *	80.0	32.4	8,500
						82.0	29.9	8,300
						84.0	27.2	7,900
100' Boom			110' Boom			120' Boom		
Load Radius (ft)	Boom Angle (deg.)	360° Rated Load (lbs)	Load Radius (ft)	Boom Angle (deg.)	360° Rated Load (lbs)	Load Radius (ft)	Boom Angle (deg.)	360° Rated Load (lbs)
46.0	65.4	15,800 *	56.0	62.0	11,900 *	56.0	64.5	11,400 *
48.0	64.1	15,200 *	58.0	60.8	11,700 *	58.0	63.4	11,300 *
50.0	62.8	14,600 *	60.0	59.6	11,600 *	60.0	62.3	11,200 *
52.0	61.5	14,000 *	62.0	58.3	11,300 *	62.0	61.3	11,000 *
54.0	60.2	13,500 *	64.0	57.1	11,100 *	64.0	60.2	10,800 *
56.0	58.8	13,000 *	66.0	55.8	10,800 *	66.0	59.0	10,600 *
58.0	57.5	12,500 *	68.0	54.6	10,400 *	68.0	57.9	10,200 *
60.0	56.1	12,100 *	70.0	53.3	10,100	70.0	56.8	9,900
62.0	54.7	11,700 *	72.0	52.0	9,700	72.0	55.6	9,500
64.0	53.3	11,400 *	74.0	50.6	9,300	74.0	54.5	9,100
66.0	51.8	11,000 *	76.0	49.2	8,900	76.0	53.3	8,800
68.0	50.4	10,700 *	78.0	47.8	8,500	78.0	52.1	8,400
70.0	48.8	10,300	80.0	46.4	8,200	80.0	50.8	8,100
72.0	47.3	9,900	82.0	45.0	7,900	82.0	49.6	7,700
74.0	45.7	9,400	84.0	43.4	7,500	84.0	48.3	7,400
76.0	44.1	9,000	86.0	41.9	7,200	86.0	47.0	7,100
78.0	42.4	8,800	88.0	40.3	7,000	88.0	45.7	6,800
80.0	40.6	8,300	90.0	38.6	6,800	90.0	44.3	6,600
82.0	38.8	8,100	92.0	36.9	6,600	92.0	42.9	6,400
84.0	36.9	7,700	94.0	35.1	6,400	94.0	41.5	6,200
86.0	35.0	7,400	96.0	33.3	6,200	96.0	40.0	6,000
88.0	32.9	7,200	98.0	31.3	5,900	98.0	38.5	5,700
90.0	30.7	7,000	100.0	29.2	5,700	100.0	36.9	5,500
92.0	28.3	6,800	102.0	27.0	5,500	102.0	35.3	5,300
94.0	25.8	6,600	104.0	24.5	5,300	104.0	33.6	5,100
						106.0	31.8	5,000

Supplemental Data - Barge

1. Rated loads included in the charts are the maximum allowable freely suspended loads at a given boom length, boom angle and load radius, and have been determined for the machine standing level on firm supporting surface under ideal operating conditions. The user must limit or de-rate rated loads to allow for adverse conditions (such as soft or uneven ground, out-of-level conditions, wind, side loads, pendulum action, jerking or sudden stopping of loads, inexperience of personnel, multiple machine lifts, and traveling with a load).
2. Rated loads do not exceed 75% of minimum tipping loads. Rated loads based on factors other than machine stability such as structural competence are shown by asterisk * in the charts.
3. The machine must be reeved and set-up as stated in the operation manual and all the instruction manuals if these manuals are missing, obtain replacements.
 - Machine shall be positively secured to prevent shifting.
 - Boom backstops are required for all boom length.
 - Gantry must be fully raised position for all operations.
 - Crawlers must be fully extended and be locked in position.
 - Must have 69,000 lbs (5) Counterweights fully installed.
 - Must have 31,700 lbs (2) Carbody weights fully installed.
4. Do not attempt to lift where no radius on load is listed as crane may tip or collapse.
5. Attempting to lift more than rated loads may cause machine to tip or collapse. Do not tip machine to determine rated loads.
6. Weight of hooks, hook blocks, slings and other lifting devices are a part of the total load. Their total weight must be subtracted from the rated load to obtain the weight that can be lifted.
7. When lifting over boom point with jib or auxiliary sheave, rated loads for the boom must be deducted as shown below.

Jib Length	Aux Sheave	30 ft	40 ft	50 ft	60 ft
Deduct (lbs)	430	Not Applicable			

When auxiliary sheave is used for 8 or 7 reeving parts of line, it is not required to deduct 430 lbs from rated loads.

8. To install the jib is prohibited when the machine is on a barge.
9. The total load that can be lifted over an auxiliary sheave is the value for 430 lbs deducted from rated load for the boom without auxiliary sheave, but it should not exceed 24,000 lbs.

10. Boom lengths that can attach auxiliary sheave are from 40 ft (12.2 m) to 190 ft (57.9 m).
11. The boom should be erected over the front of the crawlers, not laterally.
12. Least stable position is over the side.
13. Maximum hoist load for number of reeving parts of line for hoist rope.

Maximum Load for Main Boom

No. of Parts of line	1	2	3	4	5
Maximum Loads (lbs)	25,200	50,400	75,600	100,800	126,000

No. of Parts of line	6	7	8
Maximum Loads (lbs)	151,200	176,400	220,000

Maximum Load for Auxiliary Sheave

No. of Parts of line	1
Maximum Loads (lbs)	24,000

14. Weight of recommended hook block.

Hook Block	110 t	77 t	55 t	39 t	12 t ball hook
Weight (lbs)	3,815	1,990	1,875	1,545	660

Warning: If the weight of the hook block to be used is light than the recommended weight, the jib may turn over backw or will be difficult to lower the empty hook block.

15. Rated loads listed apply only to the machine as originally manufactured and designed by KOBELCO CRANES CO., LTD. Modifications to this machine or use of equipment other than that specified can reduce operating capacity.
16. Designed and rated to comply with ANSI Code B30.5.

STERLING CRANE

Barge

5 Counterweights (69,000 lbs) - 2 Carbody weights (31,800 lbs) - Crawlers in extended position.

40' Boom						50' Boom						60' Boom					
360° Rated Load (lbs)						360° Rated Load (lbs)						360° Rated Load (lbs)					
Load Radius (ft)	Boom Angle (deg.)	0 Degree Machine List	1 Degree Machine List	2 Degree Machine List	2 Degree Machine List	Load Radius (ft)	Boom Angle (deg.)	0 Degree Machine List	1 Degree Machine List	2 Degree Machine List	2 Degree Machine List	Load Radius (ft)	Boom Angle (deg.)	0 Degree Machine List	1 Degree Machine List	2 Degree Machine List	2 Degree Machine List
11.0	80.5	220,000 *				12.0	81.2	213,200 *				13.0	81.7	200,400 *			
12.0	79.0	213,300 *				13.0	80.0	200,600 *				14.0	80.7	187,400 *			
13.0	77.5	200,800 *				14.0	78.9	187,800 *				15.0	79.8	175,200 *			
14.0	76.0	188,100 *				15.0	77.7	175,600 *				16.0	78.8	164,800 *			
15.0	74.6	175,900 *	175,900 *			16.0	76.6	165,300 *				17.0	77.8	155,500 *			
16.0	73.1	165,500 *	165,500 *			17.0	75.4	156,000 *				18.0	76.8	146,900 *			
17.0	71.6	156,300 *	156,300 *	127,700 *		18.0	74.2	147,400 *	143,200 *			19.0	75.9	139,800 *	123,900 *		
18.0	70.1	147,800 *	146,400 *	126,100 *		19.0	72.9	140,100 *	132,200 *			20.0	74.9	132,200	118,100 *		
19.0	68.5	140,500 *	134,600 *	122,400 *		20.0	71.7	132,400	122,900			22.0	72.9	115,100	105,300		
20.0	66.9	132,800	124,900	116,500 *	100,300 *	22.0	69.3	115,300	106,800	98,500 *		24.0	70.9	100,800	93,000	81,600 *	
22.0	63.7	115,600	108,300	103,400	97,800 *	24.0	66.8	101,000	94,400	89,500 *	77,800 *	26.0	68.8	89,100	83,200	78,700	
24.0	60.4	101,300	95,600	92,000	88,400	26.0	64.3	89,400	84,500	80,700	75,600 *	28.0	66.7	80,500	75,300	71,600	63,000 *
26.0	57.0	89,600	85,600	82,700	79,900	28.0	61.7	80,700	76,400	73,400	70,700	30.0	64.6	72,800	68,700	65,700	61,500 *
28.0	53.4	80,900	77,400	75,100	72,900	30.0	59.1	73,000	69,700	67,200	64,900	32.0	62.5	66,600	63,200	60,600	58,400
30.0	49.8	73,300	70,600	68,700	67,000	32.0	56.3	67,000	63,900	61,900	60,000	34.0	60.3	61,600	58,400	56,200	54,400
32.0	45.8	67,200	64,800	63,400	62,000	34.0	53.4	62,000	59,100	57,400	55,900	36.0	58.0	57,300	54,200	52,400	50,800
34.0	41.2	61,700	60,000	58,900	57,800	36.0	50.3	57,800	55,000	53,600	52,300	38.0	55.7	53,100	50,600	49,100	47,700
36.0	36.2	56,600	55,700 *	54,700 *	53,700 *	38.0	47.3	53,600	51,400	50,100	49,000	40.0	53.4	49,300	47,500	46,100	44,900
38.0	31.1	51,500	51,000 *	49,700 *	48,400 *	40.0	44.0	49,800	48,100	47,200	46,300	42.0	50.9	46,600	44,600	43,500	42,400
40.0	25.4	45,900 *	44,800 *	43,600 *	42,500 *	42.0	40.4	47,000	45,400	44,600	43,800	44.0	48.3	43,800	42,100	41,100	40,200
						44.0	36.7	44,300	42,900	42,200	41,500	46.0	45.8	41,100	39,800	38,900	38,100
						46.0	62.9	41,500	40,600	40,000	39,500	48.0	42.8	39,200	37,700	37,000	36,300
						48.0	27.6	38,300	38,200 *	37,400 *	36,700 *	50.0	39.9	37,200	35,900	35,300	34,800
						50.0	22.3	35,100	34,800 *	33,900 *		55.0	31.2	32,900	31,900 *	31,500 *	31,100 *
												60.0	20.7	28,600 *			
Reeves		8	7	6	4	Reeves		8	6	4	4	Reeves		8	5	4	4
70' Boom						80' Boom						90' Boom					
360° Rated Load (lbs)						360° Rated Load (lbs)						360° Rated Load (lbs)					
Load Radius (ft)	Boom Angle (deg.)	0 Degree Machine List	1 Degree Machine List	2 Degree Machine List	2 Degree Machine List	Load Radius (ft)	Boom Angle (deg.)	0 Degree Machine List	1 Degree Machine List	2 Degree Machine List	2 Degree Machine List	Load Radius (ft)	Boom Angle (deg.)	0 Degree Machine List	1 Degree Machine List	2 Degree Machine List	2 Degree Machine List
15.0	81.3	151,000 *				16.0	81.6	151,000 *				17.0	81.9	125,800 *			
16.0	80.4	151,000 *				17.0	80.9	149,300 *				18.0	81.3	125,800 *			
17.0	79.6	149,400 *				18.0	80.2	146,500 *				19.0	80.7	125,800 *			
18.0	78.7	146,700 *				19.0	79.5	139,400 *				20.0	80.0	124,000 *			
19.0	77.9	139,800 *				20.0	78.8	131,800				22.0	78.7	112,500 *			
20.0	77.1	132,200				22.0	77.3	115,100				24.0	77.4	100,800			
22.0	75.4	115,400				24.0	75.8	101,000				26.0	76.1	89,100			
24.0	73.7	101,300	92,400			26.0	74.3	89,200	81,800			28.0	74.8	80,500	73,000 *		
26.0	72.0	89,600	82,800	68,700 *		28.0	72.8	80,500	74,100			30.0	73.5	72,800	66,900		
28.0	70.3	80,800	75,000	67,400 *		30.0	71.2	72,800	67,700	58,100 *		32.0	72.1	66,600	61,600	50,600 *	
30.0	68.5	73,000	68,500	65,000	53,600 *	32.0	69.7	66,600	62,200	57,100 *	46,400 *	34.0	70.8	61,600	56,900	49,600 *	
32.0	66.7	67,000	63,000	60,100	51,800 *	34.0	68.2	61,600	57,500	54,700	44,700 *	36.0	69.4	57,300	53,000	49,000 *	39,900 *
34.0	64.9	62,000	58,300	55,700	49,900 *	36.0	66.6	57,300	53,500	51,000	43,300 *	38.0	68.0	53,100	49,500	47,000	38,500 *
36.0	63.0	57,800	54,200	52,100	47,900 *	38.0	65.1	53,100	50,000	47,800	41,800 *	40.0	66.6	49,300	46,300	44,200	37,600 *
38.0	61.2	53,600	50,600	48,700	45,800	40.0	63.5	49,300	46,800	45,000	40,400 *	42.0	65.2	46,500	43,600	41,700	36,400 *
40.0	59.3	49,800	47,400	45,700	43,800	42.0	61.8	46,600	44,100	42,400	39,000 *	44.0	63.8	43,700	41,100	39,500	35,400 *
42.0	57.3	46,900	44,600	43,100	41,500	44.0	60.2	43,800	41,600	40,100	37,700	46.0	62.4	40,900	38,900	37,400	34,300
44.0	55.3	44,100	42,100	40,800	39,700	46.0	58.5	41,100	39,300	38,000	36,200	48.0	60.9	38,900	36,900	35,600	33,200
46.0	53.3	41,300	39,800	38,700	37,700	48.0	56.8	39,100	37,300	36,200	34,800	50.0	59.4	36,900	35,100	34,000	32,000
48.0	51.2	39,400	37,700	36,700	35,900	50.0	55.1	37,100	35,500	34,500	33,600	55.0	55.7	32,500	31,200	30,300	29,200
50.0	49.0	37,400	35,900	35,100	34,300	55.0	50.5	32,700	31,500	30,800	30,000	60.0	51.7	29,000	28,100	27,400	26,600
55.0	43.2	33,200	32,000	31,400	30,800	60.0	45.7	29,200	28,300	27,700	27,200	65.0	47.4	26,100	25,400	24,800	24,200
60.0	36.9	29,600	28,800	28,400	28,100	65.0	40.4	26,300	25,700	25,300	24,800	70.0	42.9	23,800	23,100	22,700	22,200
65.0	29.2	26,800	26,300 *	26,000 *	25,800 *	70.0	34.3	24,100	23,400	23,100	22,800	75.0	37.9	21,800	21,200	20,800	20,500
						75.0	26.9	22,100	21,500	21,300	21,100	80.0	32.2	20,100	19,600	19,300	19,100
												85.0	25.7	18,600	18,300	18,100	17,900
Reeves		6	4	4	4	Reeves		6	4	4	2	Reeves		5	4	4	2

STERLING CRANE

Barge

5 Counterweights (69,000 lbs) - 2 Carbody weights (31,800 lbs) - Crawlers in extended position.

100' Boom						110' Boom						120' Boom					
		360° Rated Load (lbs)						360° Rated Load (lbs)						360° Rated Load (lbs)			
Load Radius (ft)	Boom Angle (deg.)	0 Degree Machine List	1 Degree Machine List	2 Degree Machine List	2 Degree Machine List	Load Radius (ft)	Boom Angle (deg.)	0 Degree Machine List	1 Degree Machine List	2 Degree Machine List	2 Degree Machine List	Load Radius (ft)	Boom Angle (deg.)	0 Degree Machine List	1 Degree Machine List	2 Degree Machine List	2 Degree Machine List
19.0	81.6	125,600*				20.0	81.8	100,800*				22.0	81.6	98,700*			
20.0	81.0	123,600*				22.0	80.8	100,800*				24.0	80.6	94,200*			
22.0	79.9	112,200*				24.0	79.7	96,500*				26.0	79.6	88,000*			
24.0	78.7	100,600				26.0	78.6	88,500*				28.0	78.6	79,900			
26.0	77.5	88,900				28.0	77.6	80,200				30.0	77.7	72,200			
28.0	76.3	80,200				30.0	76.5	72,400				32.0	76.7	66,100			
30.0	75.1	72,400				32.0	75.4	66,300				34.0	75.7	61,100	53,000*		
32.0	74.0	66,300	60,800			34.0	74.3	61,300	55,900*			36.0	74.7	56,800	51,300		
34.0	72.8	61,300	56,300			36.0	73.2	57,000	51,900			38.0	73.7	52,500	47,900		
36.0	71.6	57,000	52,300	43,500*		38.0	72.2	52,700	48,600			40.0	72.7	48,700	45,000	33,900*	
38.0	70.3	52,700	48,900	42,900*		40.0	71.1	48,900	45,500	37,900*		42.0	71.7	45,800	42,200	33,400*	
40.0	69.1	48,900	45,800	42,400*	34,800*	42.0	70.0	46,200	42,900	37,500*		44.0	70.7	43,000	39,800	33,000*	
42.0	67.9	46,200	43,100	40,900*	33,500*	44.0	68.9	43,400	40,400	37,000*	28,900*	46.0	69.7	40,200	37,600	32,800*	
44.0	66.6	43,400	40,700	38,800	32,500*	46.0	67.8	40,700	38,200	36,200*	28,600*	48.0	68.6	38,300	35,600	32,300*	
46.0	65.4	40,700	38,500	36,800	31,700*	48.0	66.6	38,700	36,300	34,600	28,200*	50.0	67.6	36,300	34,000	31,700*	24,800*
48.0	64.1	38,700	36,500	35,000	30,900*	50.0	65.4	36,600	34,500	32,900	27,900*	55.0	65.0	32,000	30,200	28,900	24,300*
50.0	62.8	36,600	34,700	33,400	30,000*	55.0	62.5	32,300	30,500	29,400	27,200*	60.0	62.3	28,300	27,100	26,000	23,600*
55.0	59.5	32,300	30,800	29,700	27,800*	60.0	59.5	28,700	27,400	26,400	25,500	65.0	59.6	25,400	24,400	23,500	22,700
60.0	56.1	28,700	27,500	26,700	25,500	65.0	56.5	25,900	24,700	23,900	23,100	70.0	56.8	23,200	22,200	21,400	20,800
65.0	52.5	25,900	24,900	24,300	23,600	70.0	53.2	23,500	22,500	21,800	21,200	75.0	53.8	21,200	20,300	19,700	19,100
70.0	48.8	23,500	22,700	22,100	21,500	75.0	49.9	21,400	20,600	20,000	19,500	80.0	50.8	19,400	18,600	18,100	17,600
75.0	44.8	21,400	20,700	20,300	20,000	80.0	46.4	19,600	19,000	18,600	18,200	85.0	47.7	17,700	17,200	16,700	16,300
80.0	40.5	19,600	19,200	18,800	18,500	85.0	42.6	18,100	17,700	17,300	17,000	90.0	44.3	16,500	15,900	15,600	15,300
85.0	36.0	18,100	17,700	17,500	17,200	90.0	38.6	16,800	16,400	16,100	15,700	95.0	40.7	15,300	14,800	14,500	14,300
90.0	30.5	16,900	16,500	16,300	16,100	95.0	34.1	15,600	15,200	15,000	14,800	100.0	36.9	14,200	13,800	13,600	13,400
95.0	24.0	15,800	15,400	15,300	15,100	100.0	29.1	14,600	14,300	14,200	14,000	110.0	27.8	12,600	12,200	12,000	11,900
						105.0	23.2	13,770	13,500	13,300		115.0	22.2	11,840	11,500		
Reeves		5	4	2	2	Reeves		4	4	2	2	Reeves		4	4	2	2
130' Boom						140' Boom						150' Boom					
		360° Rated Load (lbs)						360° Rated Load (lbs)						360° Rated Load (lbs)			
Load Radius (ft)	Boom Angle (deg.)	0 Degree Machine List	1 Degree Machine List	2 Degree Machine List	2 Degree Machine List	Load Radius (ft)	Boom Angle (deg.)	0 Degree Machine List	1 Degree Machine List	2 Degree Machine List	2 Degree Machine List	Load Radius (ft)	Boom Angle (deg.)	0 Degree Machine List	1 Degree Machine List	2 Degree Machine List	2 Degree Machine List
24.0	81.3	85,100*				24.0	81.9	72,900*				26.0	81.7	62,200*			
26.0	80.4	83,900*				26.0	81.1	71,800*				28.0	80.9	61,300*			
28.0	79.5	78,200*				28.0	80.3	70,800*				30.0	80.1	60,400*			
30.0	78.6	71,900				30.0	79.4	69,000*				32.0	79.4	59,400*			
32.0	77.7	65,900				32.0	78.6	64,700*				34.0	78.6	57,200*			
34.0	76.9	60,900				34.0	77.8	60,500				36.0	77.8	54,100*			
36.0	75.9	56,600				36.0	76.9	56,200				38.0	77.0	51,000*			
38.0	75.0	52,300	46,400*			38.0	76.1	52,000				40.0	76.3	48,000			
40.0	74.1	48,400	44,500			40.0	75.2	48,200	41,500*			42.0	75.5	45,200	37,100*		
42.0	73.2	45,600	41,700			42.0	74.4	45,400	40,600*			44.0	74.7	42,400	36,600*		
44.0	72.2	42,800	39,400	29,700*		44.0	73.5	42,600	38,900			46.0	73.9	39,600	35,800*		
46.0	71.3	40,000	37,200	29,400*		46.0	72.7	39,800	36,800			48.0	73.1	37,500	34,500		
48.0	70.4	38,000	35,300	29,100*		48.0	71.8	37,800	34,900			50.0	72.3	35,500	32,800	23,300*	
50.0	69.4	36,000	33,600	28,700*		50.0	71.0	35,800	33,200			55.0	70.3	31,200	29,000	22,700*	
55.0	67.1	31,600	29,700	27,900*	21,700*	55.0	68.8	31,400	29,400	25,100*	19,200*	60.0	68.2	27,600	25,800	22,000*	16,800*
60.0	64.6	28,100	26,600	25,500	21,200*	60.0	66.6	27,800	26,200	24,500*	18,700*	65.0	66.2	24,800	23,300	21,600*	16,500*
65.0	62.2	25,200	24,100	23,100	20,700*	65.0	64.3	25,000	23,500	22,400*	18,300*	70.0	64.0	22,400	21,100	20,100*	16,100*
70.0	59.6	22,900	21,900	21,100	20,000*	70.0	62.0	22,600	21,300	20,500	17,900*	75.0	61.9	20,300	19,200	18,300	15,700*
75.0	57.0	20,900	20,000	19,300	18,700	75.0	59.7	20,500	19,500	18,700	17,400*	80.0	59.6	18,500	17,600	17,000	15,400*
80.0	54.3	19,000	18,300	17,700	17,200	80.0	57.3	18,700	17,800	17,200	16,600	85.0	57.4	17,000	16,200	15,500	14,900*
85.0	51.6	17,500	16,900	16,400	16,000	85.0	54.8	17,200	16,400	15,800	15,400	90.0	55.2	15,700	14,900	14,400	14,000
90.0	48.7	16,100	15,700	15,300	14,900	90.0	52.2	15,900	15,200	14,700	14,300	95.0	52.8	14,400	13,800	13,300	13,000
95.0	45.6	15,000	14,600	14,200	13,900	95.0	49.5	14,600	14,100	13,700	13,300	100.0	50.3	13,400	12,800	12,500	12,100
100.0	42.4	14,000	13,600	13,300	13,000	100.0	46.8	13,600	13,100	12,800	12,500	110.0	45.1	11,700	11,200	10,900	10,700
110.0	35.4	12,100	11,900	11,700	11,600	110.0	40.8	11,900	11,400	11,200	11,000	120.0	39.3	10,300	9,900	9,600	9,400
120.0	26.6	10,800	10,600	10,500	10,400	120.0	34.0	10,300	10,100	9,900	9,800	130.0	32.8	8,900	8,800	8,600	8,400
125.0	21.3	10,230	9,900			130.0	25.7	9,200	9,100	8,900	8,800	140.0	24.3	8,000	7,800	7,700	7,600
						135.0	20.5	8,830									
Reeves		4	2	2	2	Reeves		4	2	2	2	Reeves		4	2	2	2

STERLING CRANE

Barge

5 Counterweights (69,000 lbs) - 2 Carbody weights (31,800 lbs) - Crawlers in extended position.

160' Boom						170' Boom						180' Boom					
360° Rated Load (lbs)						360° Rated Load (lbs)						360° Rated Load (lbs)					
Load Radius (ft)	Boom Angle (deg.)	0 Degree Machine List	1 Degree Machine List	2 Degree Machine List	2 Degree Machine List	Load Radius (ft)	Boom Angle (deg.)	0 Degree Machine List	1 Degree Machine List	2 Degree Machine List	2 Degree Machine List	Load Radius (ft)	Boom Angle (deg.)	0 Degree Machine List	1 Degree Machine List	2 Degree Machine List	2 Degree Machine List
28.0	81.5	50,200 *				30.0	81.3	44,500 *				30.0	81.8	39,300 *			
30.0	80.8	50,100 *				32.0	80.7	43,900 *				32.0	81.2	38,800 *			
32.0	80.1	49,700 *				34.0	80.0	43,200 *				34.0	80.5	38,200 *			
34.0	79.4	49,200 *				36.0	79.3	42,500 *				36.0	79.9	37,600 *			
36.0	78.6	48,500 *				38.0	78.6	41,900 *				38.0	79.2	37,000 *			
38.0	77.9	47,800 *				40.0	77.9	41,200 *				40.0	78.6	36,400 *			
40.0	77.2	46,600 *				42.0	77.2	40,600 *				42.0	77.9	35,800 *			
42.0	76.4	44,300 *				44.0	76.5	40,000 *				44.0	77.2	35,100 *			
44.0	75.6	42,100 *	32,200 *			46.0	75.8	39,300 *				46.0	76.6	34,500 *			
46.0	74.9	39,800 *	31,700 *			48.0	75.1	37,400 *	28,400 *			48.0	75.9	33,900 *			
48.0	74.1	37,800 *	31,300 *			50.0	74.4	35,400 *	28,100 *			50.0	75.3	33,300 *			
50.0	73.4	35,800 *	31,000 *			55.0	72.6	31,200 *	27,100 *	17,700 *		55.0	73.7	30,800 *	24,200 *		
55.0	71.5	31,400 *	28,900 *	20,000 *		60.0	70.9	27,600 *	25,400 *	17,300 *		60.0	72.0	27,400 *	22,900 *	15,300 *	
60.0	69.6	27,800 *	26,000 *	19,300 *		65.0	69.1	24,600 *	23,000 *	16,900 *		65.0	70.3	24,400 *	21,800 *	15,100 *	
65.0	67.7	25,000 *	23,400 *	18,900 *	14,400 *	70.0	67.3	22,300 *	20,900 *	16,400 *	12,400 *	70.0	68.6	21,900 *	20,400 *	14,600 *	10,800 *
70.0	65.8	22,600 *	21,200 *	18,500 *	14,000 *	75.0	65.4	20,300 *	19,000 *	16,000 *	12,200 *	75.0	66.9	19,900 *	18,700 *	14,200 *	10,600 *
75.0	63.8	20,500 *	19,300 *	18,000 *	13,700 *	80.0	63.5	18,500 *	17,400 *	15,600 *	11,800 *	80.0	65.2	18,100 *	17,100 *	13,800 *	10,400 *
80.0	61.8	18,700 *	17,700 *	16,900 *	13,400 *	85.0	61.6	16,800 *	16,000 *	15,300 *	11,500 *	85.0	63.4	16,600 *	15,700 *	13,500 *	10,000 *
85.0	59.7	17,000 *	16,300 *	15,600 *	13,100 *	90.0	59.7	15,400 *	14,700 *	14,000 *	11,300 *	90.0	61.6	15,200 *	14,400 *	12,900 *	9,700 *
90.0	57.6	15,700 *	15,000 *	14,300 *	12,800 *	95.0	57.8	14,300 *	13,600 *	13,200 *	11,100 *	95.0	59.8	14,000 *	13,200 *	12,200 *	9,500 *
95.0	55.4	14,500 *	13,900 *	13,500 *	12,400 *	100.0	55.8	13,300 *	12,600 *	12,100 *	10,800 *	100.0	57.9	12,900 *	12,300 *	11,600 *	9,300 *
100.0	53.2	13,500 *	12,900 *	12,400 *	12,000 *	110.0	51.5	11,500 *	10,900 *	10,600 *	10,100 *	110.0	54.0	11,100 *	10,600 *	10,300 *	8,500 *
110.0	48.6	11,700 *	11,100 *	10,900 *	10,600 *	120.0	47.0	9,800 *	9,600 *	9,300 *	9,000 *	120.0	49.9	9,600 *	9,100 *	8,800 *	7,700 *
120.0	43.6	10,100 *	9,800 *	9,600 *	9,300 *	130.0	42.2	8,700 *	8,400 *	8,200 *	8,000 *	130.0	45.6	8,500 *	8,000 *	7,700 *	6,900 *
130.0	38.1	8,900 *	8,600 *	8,500 *	8,300 *	140.0	36.8	7,700 *	7,300 *	7,100 *	7,000 *	140.0	40.9	7,400 *	7,000 *	6,900 *	6,000 *
140.0	31.6	7,900 *	7,800 *	7,600 *	7,500 *	150.0	30.5	6,800 *	6,500 *	6,400 *	6,200 *	150.0	35.7	6,500 *	6,200 *	6,000 *	5,000 *
150.0	23.7	7,100 *	6,900 *	6,800 *	6,700 *	160.0	23.2	5,900 *	5,800 *	5,800 *	5,100 *	160.0	29.7	5,600 *	5,400 *	5,000 *	4,200 *
												165.0	26.5	5,100 *	5,100 *	4,400 *	3,600 *
Reeves	2		2	2	2	Reeves	2		2	2	2	Reeves	2		2	2	2
190' Boom						200' Boom											
360° Rated Load (lbs)						360° Rated Load (lbs)											
Load Radius (ft)	Boom Angle (deg.)	0 Degree Machine List	1 Degree Machine List	2 Degree Machine List	2 Degree Machine List	Load Radius (ft)	Boom Angle (deg.)	0 Degree Machine List	1 Degree Machine List	2 Degree Machine List	2 Degree Machine List						
32.0	81.6	34,400 *				34.0	81.5	30,300 *									
34.0	81.0	33,800 *				36.0	80.9	29,700 *									
36.0	80.4	33,300 *				38.0	80.3	29,200 *									
38.0	79.8	32,700 *				40.0	79.7	28,700 *									
40.0	79.2	32,200 *				42.0	79.1	28,200 *									
42.0	78.6	31,700 *				44.0	78.6	27,700 *									
44.0	78.0	31,100 *				46.0	78.0	27,300 *									
46.0	77.4	30,600 *				48.0	77.4	26,800 *									
48.0	76.7	30,100 *				50.0	76.8	26,300 *									
50.0	76.1	29,600 *				55.0	75.3	24,900 *									
55.0	74.5	28,100 *	21,700 *			60.0	73.8	23,200 *	18,200 *								
60.0	73.0	26,200 *	20,600 *			65.0	72.4	21,500 *	17,100 *	11,700 *							
65.0	71.4	24,000 *	19,500 *			70.0	70.9	20,000 *	16,100 *	11,300 *							
70.0	69.8	21,800 *	18,400 *	13,300 *		75.0	69.3	18,500 *	15,100 *	11,000 *							
75.0	68.2	19,900 *	17,300 *	12,700 *	9,200 *	80.0	67.8	17,100 *	14,100 *	10,600 *	7,700 *						
80.0	66.5	18,000 *	16,200 *	12,400 *	9,000 *	85.0	66.2	15,900 *	13,300 *	10,100 *	7,500 *						
85.0	64.9	16,400 *	15,300 *	11,900 *	8,800 *	90.0	64.6	14,700 *	12,400 *	9,500 *	7,200 *						
90.0	63.2	15,000 *	14,100 *	11,300 *	8,600 *	95.0	63.0	13,500 *	11,700 *	9,000 *	7,000 *						
95.0	61.5	13,900 *	13,000 *	10,600 *	8,400 *	100.0	61.4	12,400 *	11,000 *	8,400 *	6,800 *						
100.0	59.7	12,900 *	12,000 *	10,000 *	8,200 *	110.0	58.1	10,600 *	9,500 *	7,400 *	6,000 *						
110.0	56.2	11,000 *	10,400 *	8,900 *	7,400 *	120.0	54.6	9,200 *	8,200 *	6,500 *	5,200 *						
120.0	52.5	9,400 *	9,100 *	7,900 *	6,500 *	130.0	51.1	7,800 *	7,100 *	5,600 *	4,500 *						
130.0	48.5	8,200 *	7,800 *	6,800 *	5,700 *	140.0	47.2	6,500 *	5,900 *	4,600 *	3,700 *						
140.0	44.3	7,200 *	6,800 *	5,900 *	4,900 *	150.0	43.1	5,200 *	4,900 *	4,000 *	3,100 *						
150.0	39.7	6,300 *	5,900 *	5,100 *	4,100 *	155.0	41.0	4,650 *	4,400 *	3,500 *							
160.0	34.8	5,300 *	5,100 *	4,000 *	3,400 *												
165.0	32.1	4,650 *	4,600 *	3,600 *													
Reeves	2		2	2	2	Reeves	2		2	2	2						

Winch Performance Data

Note:

Line speed and line pull based on Hino J08E-UV at 2,100 rpm.

Line speed and line pull based on single line.

Max. line pull is based on referential performance, not wire rope strength.

Front & Rear Drum

Wire Rope Diameter = 26 mm

Rated Line Pull = 25,200 lbf (112 kN)

Maximum Line Pull = 46,800 lbf (208 kN)

Total Storage Capacity = 1,185 ft (361.2 m)

		Line speed (ft/min)						
		Layer	1	2	3	4	5	6
		0	393	421	449	476	504	
		5,000	393	421	449	476	504	
		10,000	387	414	440	467	494	
Line Pull (lbs)	15,000	360	360	348	348	348		storage only
	20,000	270	270	261	261	261		
	25,200	214	214	199	187	173		
	30,000	166	149	140	138	136		
	35,000	120	118	114	109			
	40,000	100	95					
Storage Capacity (ft)		139	149	159	169	179	189	

Third Drum (for Load hoist)

Wire Rope Diameter = 22 mm

Rated Line Pull = 17,000 lbf (78.5 kN)

Maximum Line Pull = 32,400 lbf (144 kN)

Total Storage Capacity = 1,099 ft (334.9 m)

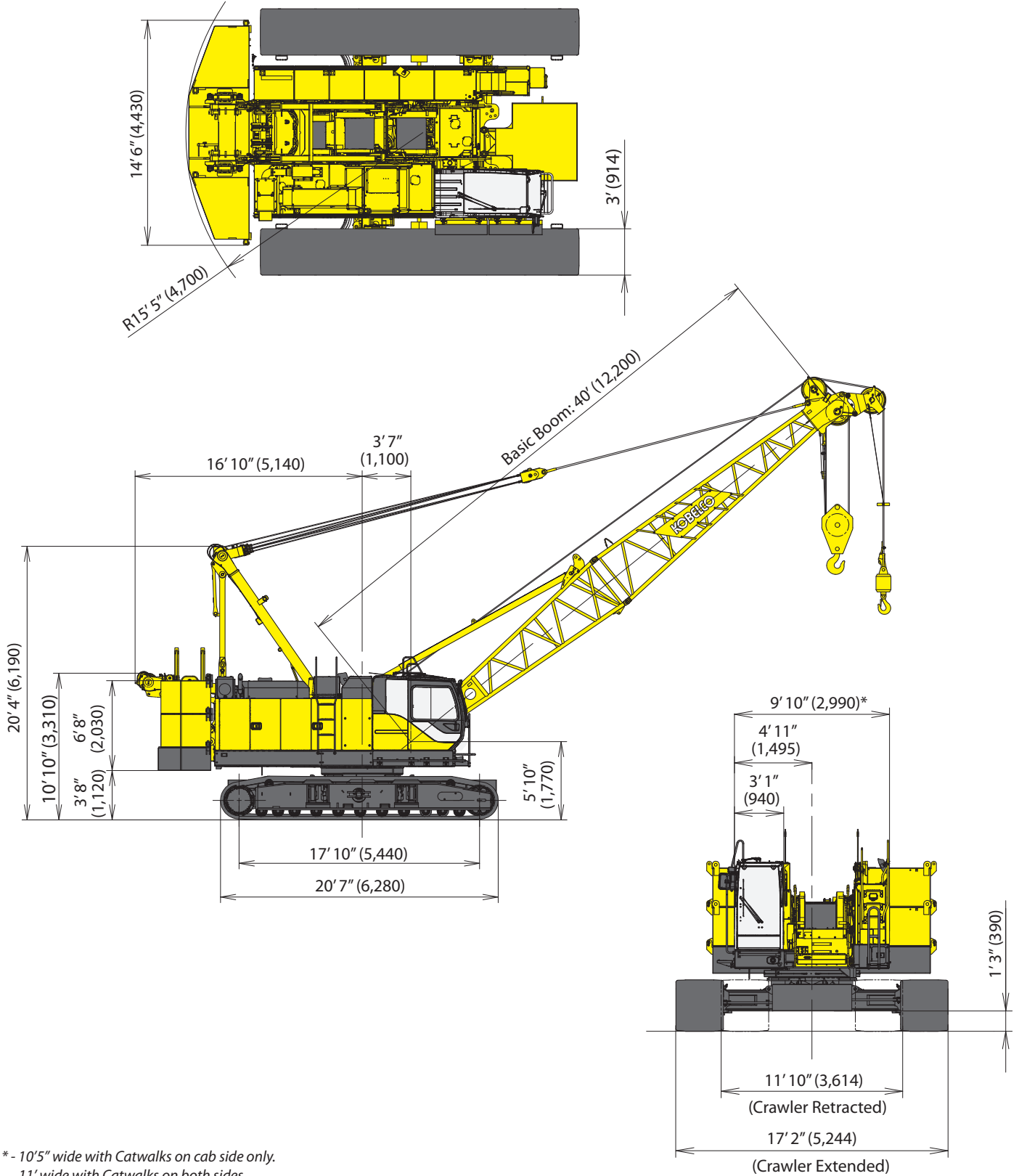
		Line speed (ft/min)						
		Layer	1	2	3	4	5	6
		0	394	394	394	394	394	
		5,000	394	394	394	394	394	
		10,000	227	227	227	227	227	
Line Pull (lbs)	15,000	147	152	161	170	179		storage only
	17,000	142	151	160	169	178		
	20,000	140	149	158	167	176		
	25,000	138	147	155	164	172		
	30,000	136	144					
Storage Capacity (ft)		130	139	148	157	166	175	

Wire Rope Specifications

Use	Construction	No load diameter	Length	Safety Factor	Required minimum breaking strength
Front drum	6 x 29 Filler IWRC Right hand lay, Regular lay	1.049" to 1.070" (26.65 mm to 27.17 mm)	771ft (235 m)	3.5: 1	120,048 lbf (534 kN)
Rear drum	6 x 29 Filler IWRC Right hand lay, Regular lay	1.049" to 1.070" (26.65 mm to 27.17 mm)	525ft (160 m)	3.5: 1	120,048 lbf (534 kN)
Boom drum	6 x 31 P *Warrington seal Right hand lay, Regular lay	0.646" to 0.658" (16.40 mm to 16.72 mm)	492ft (150 m)	3.5: 1	47,210 lbf (210 kN)
Third drum (Optional)	6 x 29 Filler IWRC Right hand lay, Regular lay	0.888" to 0.905" (22.55 mm to 22.99 mm)	476ft (145 m)	3.5: 1	81,606 lbf (363 kN)

STERLING CRANE

General Dimensions



* - 10'5" wide with Catwalks on cab side only.
11' wide with Catwalks on both sides.

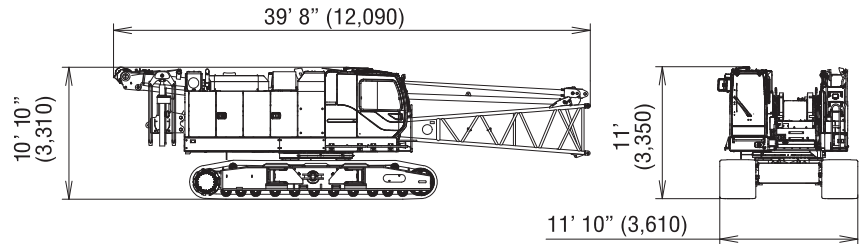
STERLING CRANE

Dimensions and Weight

Dimensions: ft-in (mm) Weight: lbs (kg)

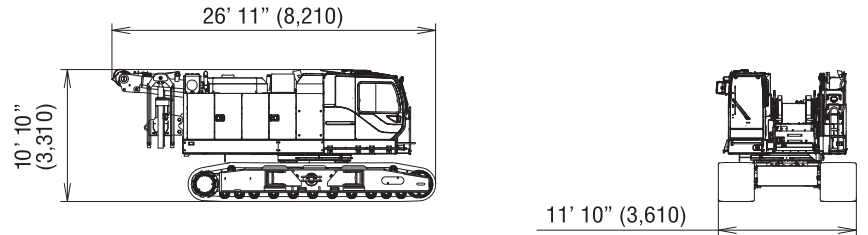
Base Machine - 1

Weight: 95,200 lbs (43,150 kg)
 Boom base, gantry, crawlers, self removal unit,
 and wire ropes (front, rear, and boom hoist)



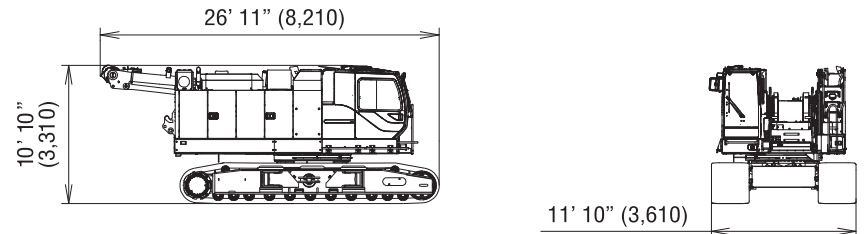
Base Machine - 2

Weight: 90,600 lbs (41,090 kg)
 Gantry, crawlers, self removal unit, and
 wire ropes (front, rear, and boom hoist)



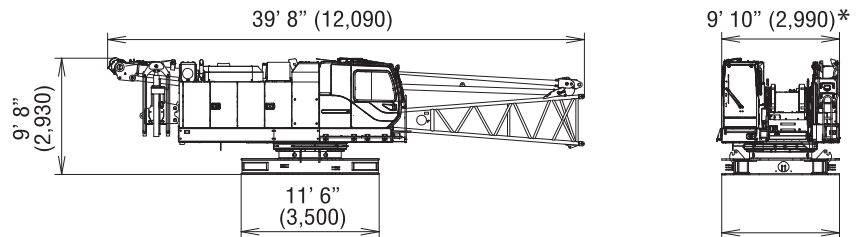
Base Machine - 3

Weight: 88,700 lbs (40,230 kg)
 Gantry, crawlers, and
 wire ropes (front, rear, and boom hoist)



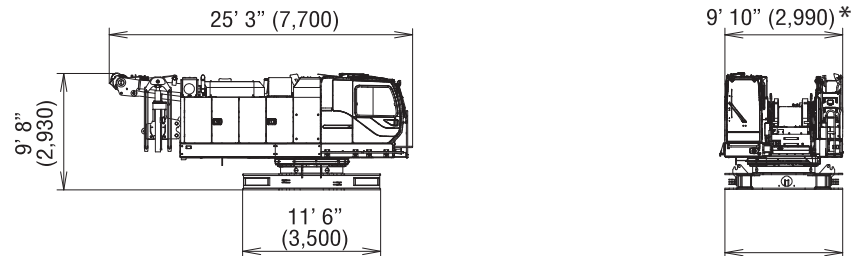
Base Machine - 4

Weight: 61,500 lbs (27,880 kg)
 Boom base, gantry, self removal unit, and
 wire ropes (front, rear, and boom hoist)



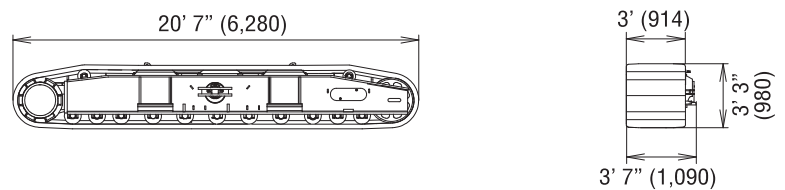
Base Machine - 5

Weight: 56,900 lbs (25,820 kg)
 Gantry, self removal unit, and
 wire ropes (front, rear, and boom hoist)



Crawler

Weight: 16,850 lbs (7,640 kg)



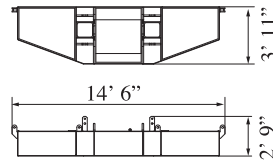
* - 10'5" wide with Catwalks on cab side only.
 11' wide with Catwalks on both sides.

STERLING CRANE

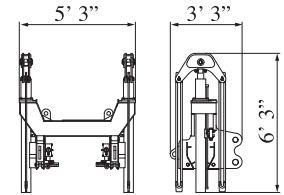
Dimensions and Weight

Dimensions: ft-in (mm) Weight: lbs (kg)

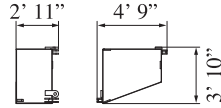
Counterweight Base
Weight: 18,200 lbs (8,310 kg)



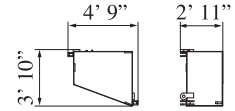
Self Removal Unit
Weight: 1,900 lbs (870 kg)



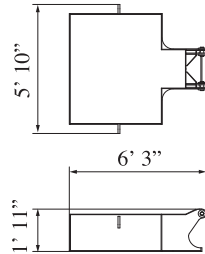
Counterweight (R)
Weight: 12,700 lbs (5,750 kg)



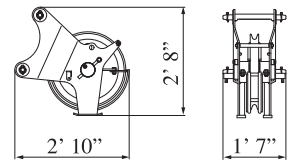
Counterweight (L)
Weight: 12,700 lbs (5,750 kg)



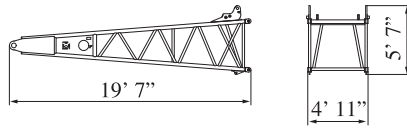
Carbody Weight
Weight: 15,900 lbs (7,200 kg)



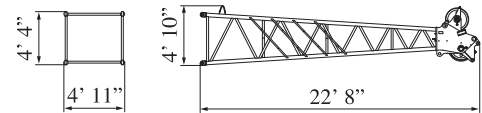
Auxiliary Sheave
Weight: 430 lbs (195 kg)



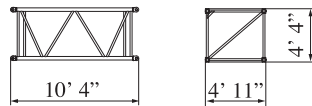
Boom Base
Weight: 3,400 lbs (1,517 kg)



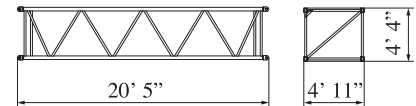
Boom Tip
Weight: 2,900 lbs (1,292 kg)
Includes cable roller and guy lines



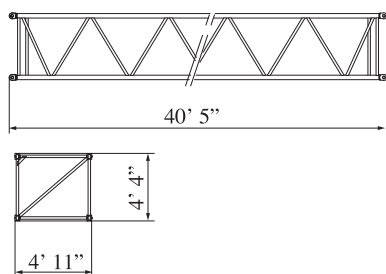
10 ft (3.0 m) Insert Boom
Weight: 800 lbs (364 kg)
Includes cable roller and guy lines



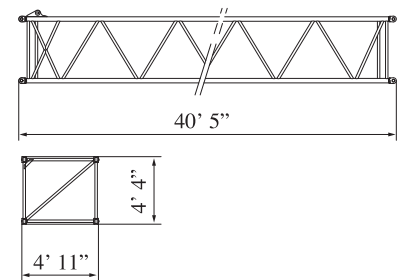
20 ft (6.1 m) Insert Boom
Weight: 1,400 lbs (613 kg)
Includes cable roller and guy lines



40 ft (12.2 m) Insert Boom
Weight: 2,400 lbs (1,098 kg)
Includes cable roller and guy lines



40 ft (12.2 m) Insert Boom (with lug)
Weight: 2,500 lbs (1,113 kg)
Includes cable roller and guy lines



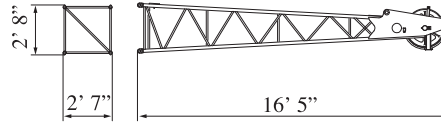
STERLING CRANE

Dimensions and Weight

Dimensions: ft-in (mm) Weight: lbs (kg)

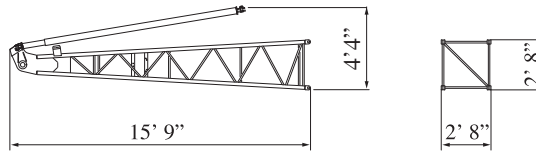
Jib Tip

Weight: 500 lbs (227 kg)
Includes cable roller.



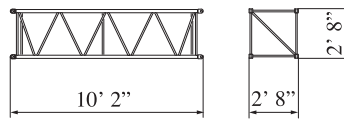
Jib Base and Strut

Weight: 1,400 lbs (637 kg)
Includes guy line.



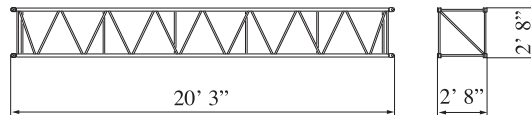
10 ft (3.0 m) Insert Jib

Weight: 280 lbs (128 kg)
Includes cable roller and guy line.



20 ft (6.1 m) Jib Insert

Weight: 480 lbs (218 kg)
Includes cable roller and guy line.



STERLING CRANE

Transportation Plan

Shipping plan for 150 ft Boom

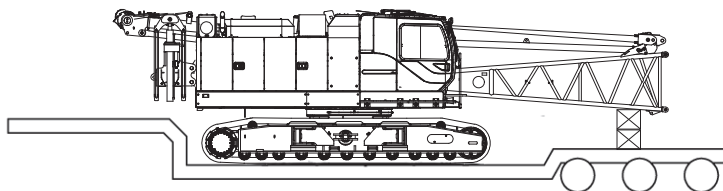
Description of Item	Weight		Trailer Loads			
	lbs	(kg)	#1	#2	#3	#4
Base Machine with Boom Base and Crawlers*	95,200	(43,150)	1			
Counterweight Base	18,200	(8,310)		1		
Counterweight (L)	12,700	(5,750)			2	
Counterweight (R)	12,700	(5,750)		1	1	
Carbody Weight	15,900	(7,200)				2
10 ft Insert Boom and Guy Line	800	(364)			1	
20 ft Insert Boom and Guy Line	1,400	(613)		1		
40 ft Insert Boom and Guy Line	2,400	(1,098)			1	
40 ft Insert Boom (w/ Lug) and Guy Line (A)	2,500	(1,113)				1
Boom Tip and Guy Line	2,900	(1,292)		1		
Jib Base and Guy Line	1,400	(637)				
10 ft Insert Jib and Guy Line	280	(128)				
20 ft Insert Jib and Guy Line	480	(218)				
Jib Tip	500	(227)				
75 Ton Block	3,000	(1,361)		1		
13 Ton Ball	800	(365)		1		
Ladder Assembly	90	(41)				1
Support Box	5,000	(2,268)				1
Approx. Total Shipping Weight		lbs (kg)	95,200 (43,150)	39,000 (17,691)	41,300 (18,712)	39,390 (17,822)

* Third drum is not included. Add 4,200 lbs if third drum is installed.

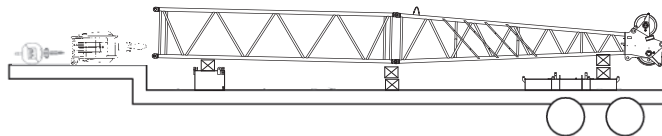
Loads for transportation were targeted at 45,000 lbs, 8' 6" wide, 48' long and 13' 6" high from ground, 48' step deck.

This may vary depending on truck/trailer weight, style of trailer and state law.

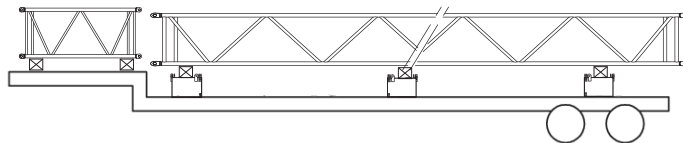
Trailer #1



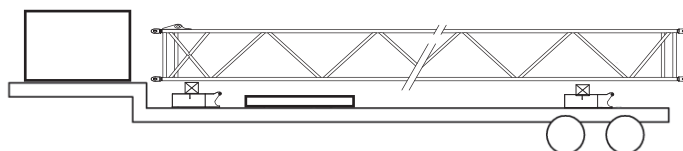
Trailer #2



Trailer #3

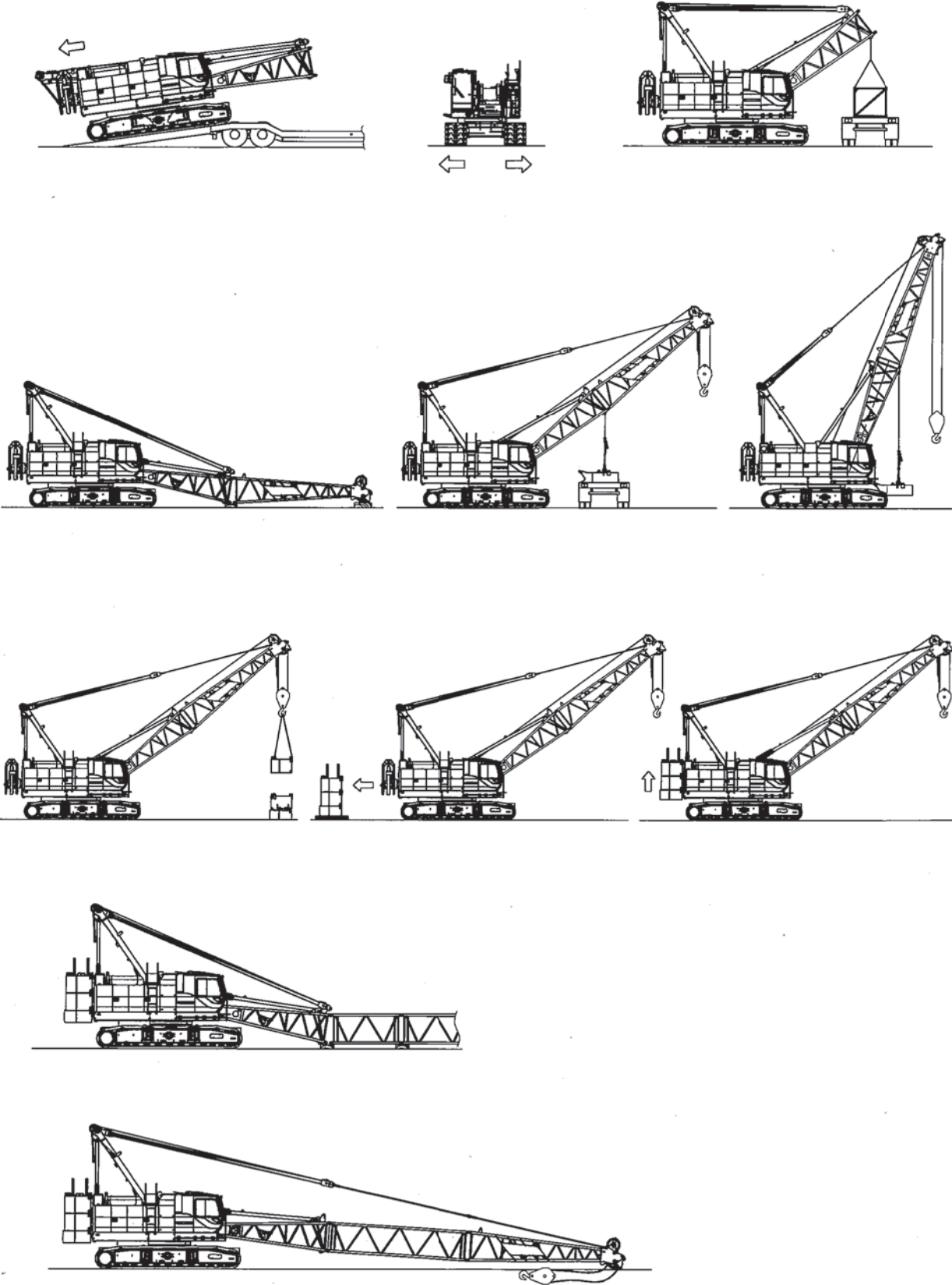


Trailer #4



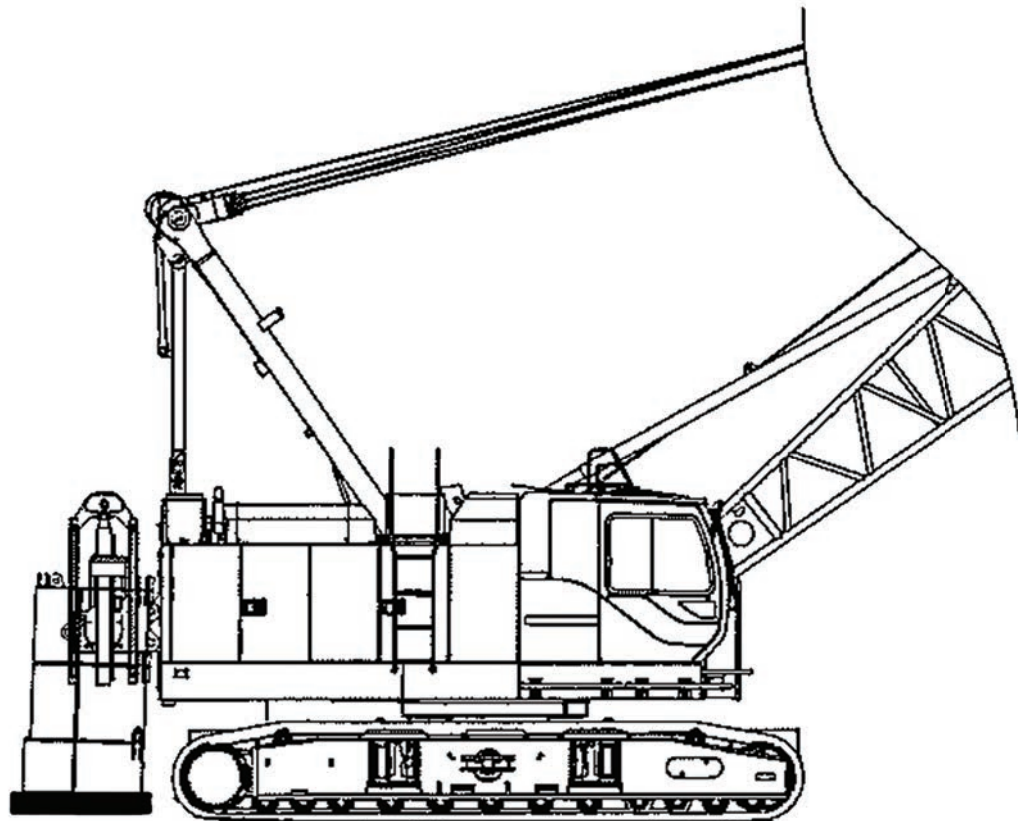
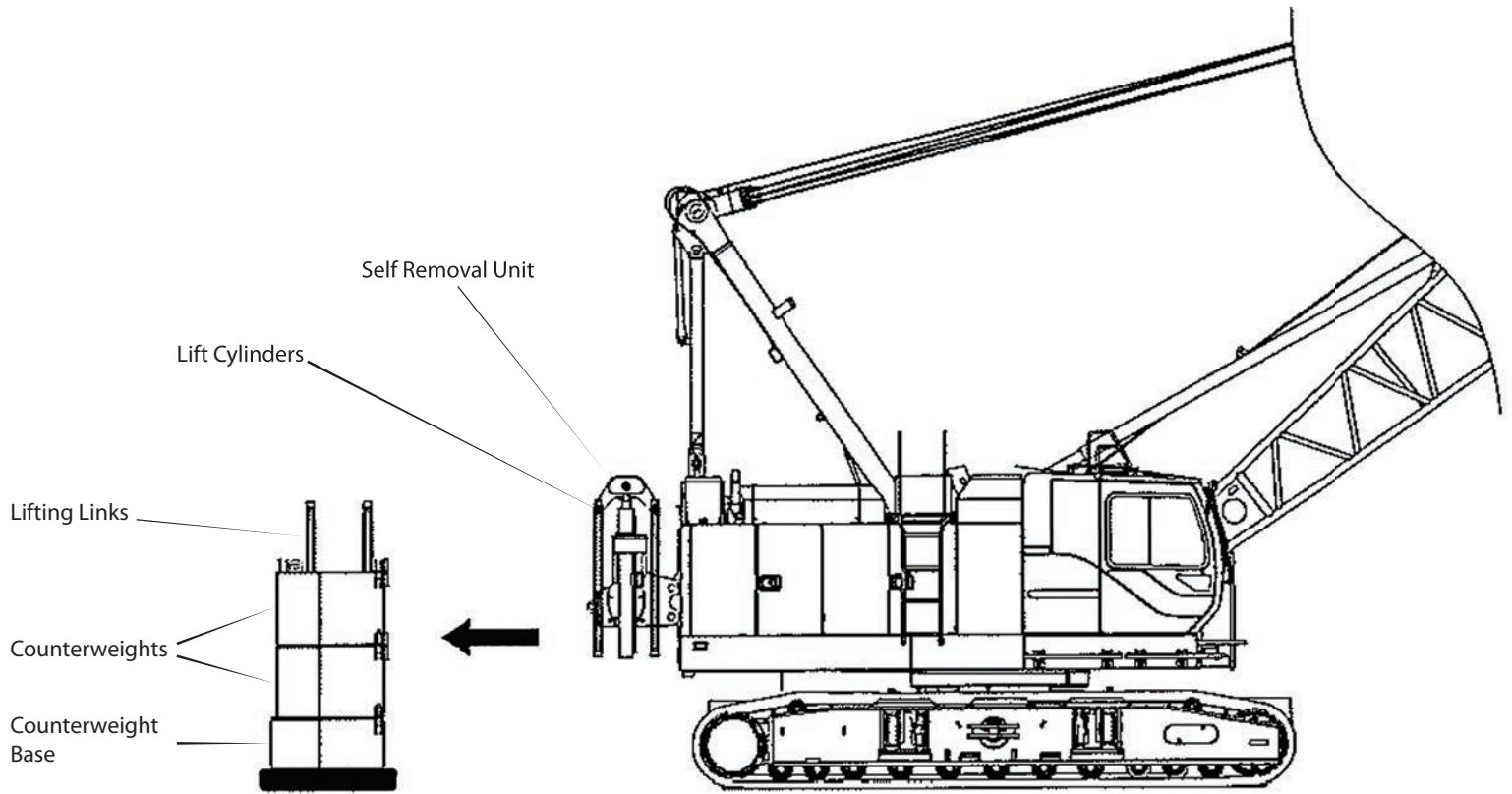
STERLING CRANE

Self-Assembly Procedure



STERLING CRANE

Counterweight Self-Removal Device



STERLING CRANE

Boom and Fixed Jib Arrangement

Boom Arrangement

Boom length ft (m)	Boom arrangement
40 (12.2)	
50 (15.2)	
60 (18.3)	※
70 (21.3)	※
80 (24.4)	※
90 (27.4)	※
100 (30.5)	※
110 (33.5)	※
120 (36.6)	※
130 (39.6)	※
140 (42.7)	※

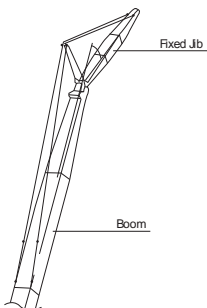
Boom length ft (m)	Boom arrangement
150 (45.7)	※
160 (48.8)	※
170 (51.8)	※
180 (54.9)	※
190 (57.9)	※
200 (61.0)	※

Symbol	Boom Length	Remarks
	20.0 ft (6.1 m)	Boom Base
	20.0 ft (6.1 m)	Boom Top
	10.0 ft (3.1 m)	Insert Boom
	20.0 ft (6.1 m)	Insert Boom
	40.0 ft (12.2 m)	Insert Boom
	40.0 ft (12.2 m)	Insert Boom with lug

↗ mark shows the guy line installing position when the fixed jib is used.

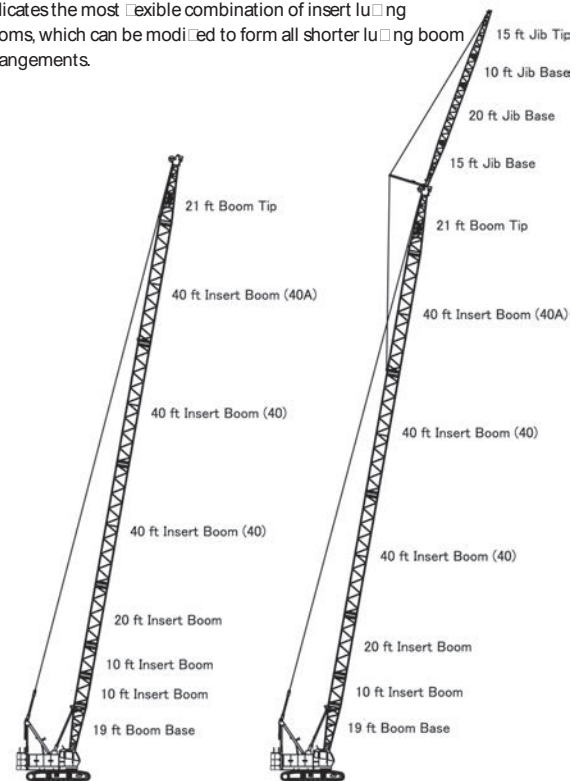
※ indicates the most flexible combination of insert lugging booms, which can be modified to form all shorter lugging boom arrangements.

Fixed Jib Arrangement



Crane boom length	Jib length ft (m)	Jib arrangement
80 ft (24.4 m) } 190 ft (57.9 m)	30 (9.1)	
	40 (12.2)	
	50 (15.2)	
	60 (18.3)	

Symbol	Jib Length	Remarks
	15 ft (4.6 m)	Jib Base
	15 ft (4.6 m)	Jib Top
	10 ft (3.0 m)	Insert Jib
	20 ft (6.1 m)	Insert Jib



Main Boom - 200 ft (61.0 m)

Main Boom - 190 ft (57.9 m)
Fixed Jib - 60 ft (18.3 m)