



LIFTING CHARTS - Crawler Cranes

KOBELCO MODEL CK1600-II - 160 TON CAPACITY

Boom and Jib Arrangement

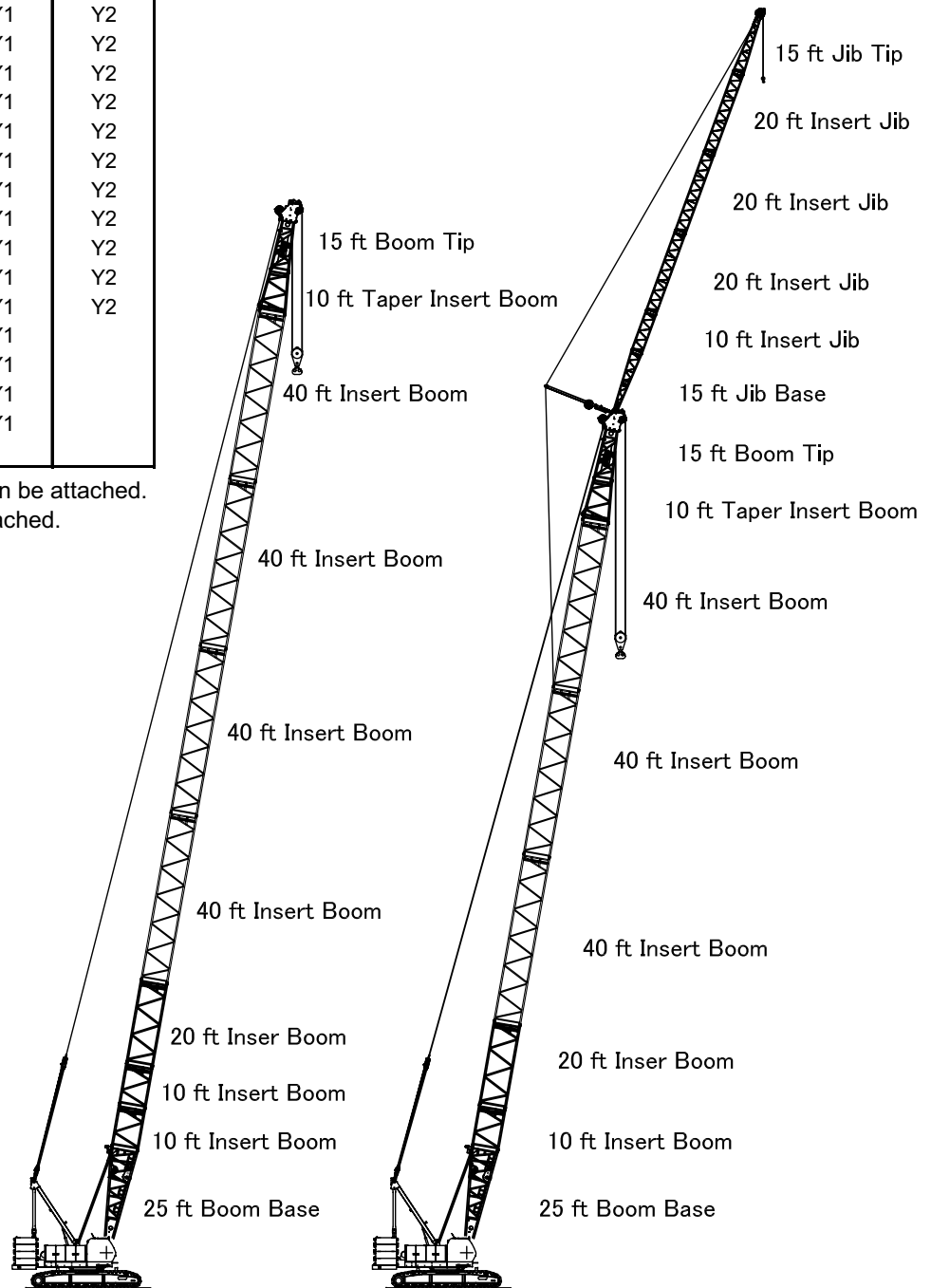
Boom Arrangement

| Boom | Insert Boom | | | Aux. Sheave | Fixed Jib |
|--------|-------------|-------|-------|-------------|-----------|
| | 10 ft | 20 ft | 40 ft | | |
| 50 ft | | | | Y1 | |
| 60 ft | 1 | | | Y1 | |
| 70 ft | | 1 | | Y1 | |
| 80 ft | 1 | 1 | | Y1 | |
| 90 ft | 2 | 1 | | Y1 | Y2 |
| 100 ft | 1 | 2 | | Y1 | Y2 |
| 110 ft | 2 | 2 | | Y1 | Y2 |
| 120 ft | 1 | 1 | 1 | Y1 | Y2 |
| 130 ft | 2 | 1 | 1 | Y1 | Y2 |
| 140 ft | 1 | 2 | 1 | Y1 | Y2 |
| 150 ft | 2 | 2 | 1 | Y1 | Y2 |
| 160 ft | 1 | 1 | 2 | Y1 | Y2 |
| 170 ft | 2 | 1 | 2 | Y1 | Y2 |
| 180 ft | 1 | 2 | 2 | Y1 | Y2 |
| 190 ft | 2 | 2 | 2 | Y1 | Y2 |
| 200 ft | 1 | 1 | 3 | Y1 | Y2 |
| 210 ft | 2 | 1 | 3 | Y1 | |
| 220 ft | 1 | 2 | 3 | Y1 | |
| 230 ft | 2 | 2 | 3 | Y1 | |
| 240 ft | 1 | 1 | 4 | Y1 | |
| 250 ft | 2 | 1 | 4 | | |

Y1: Auxiliary sheave can be attached.
Y2: Fixed jib can be attached.

Jib Arrangement

| Jib | Insert Jib | |
|--------|------------|-------|
| | 10 ft | 20 ft |
| 40 ft | 1 | |
| 60 ft | 1 | 1 |
| 80 ft | 1 | 2 |
| 100 ft | 1 | 3 |



250 ft (76.2 m) Main Boom

200 ft (60.1 m) Main Boom
and 100 ft (30.5 m) Jib