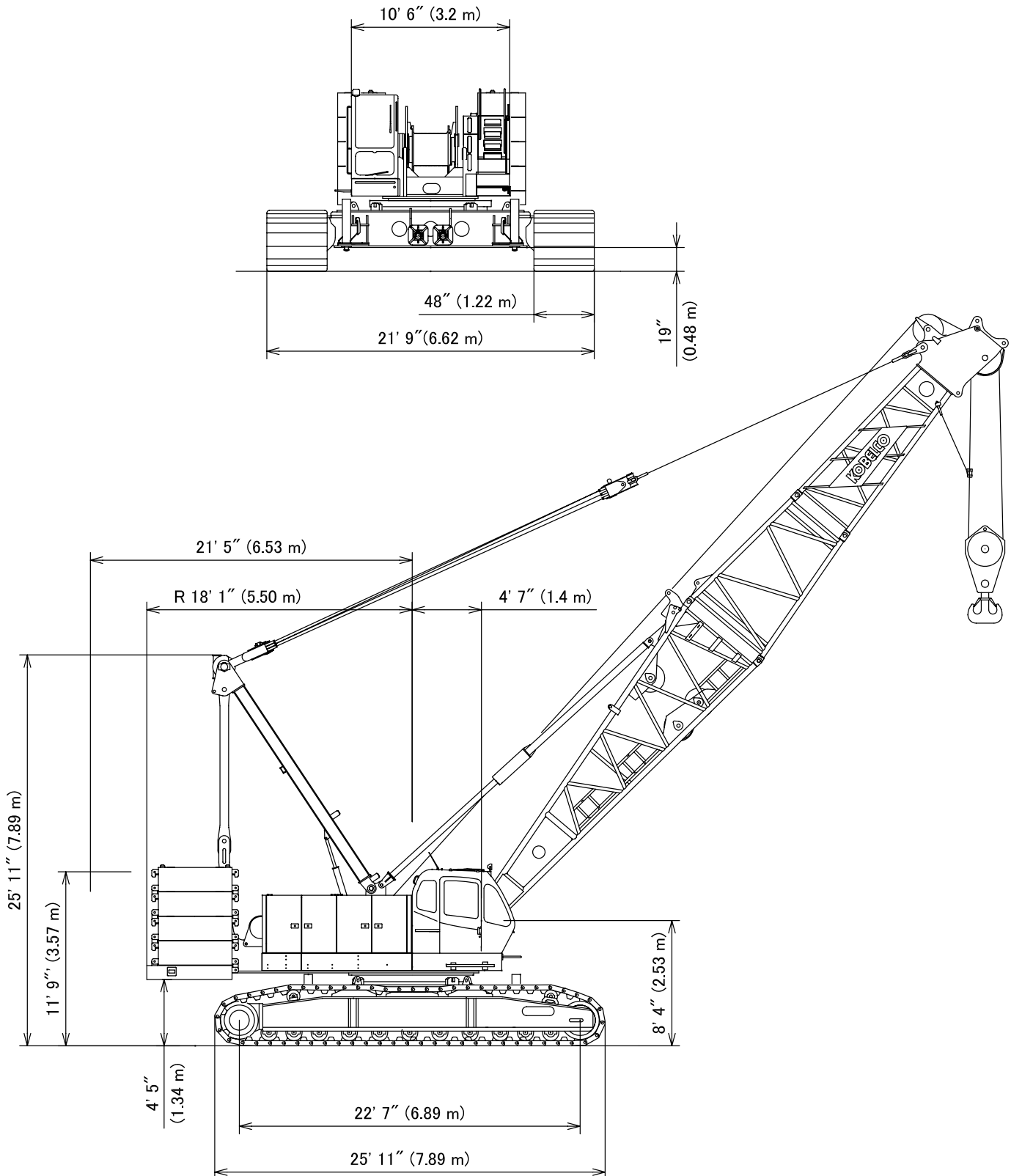




## LIFTING CHARTS - Crawler Cranes

### KOBELCO MODEL CK1600-II - 160 TON CAPACITY

#### General Dimensions



# STERLING CRANE

## Dimension and Weight

### Base Machine-1

Boom base with self-assembly sheave, Counterweight Self-Removal Cylinder, Translifter and Front, Rear, Boom hoist wire rope

Weight: 86,420 lbs (39,200 kg)

### Base Machine-2

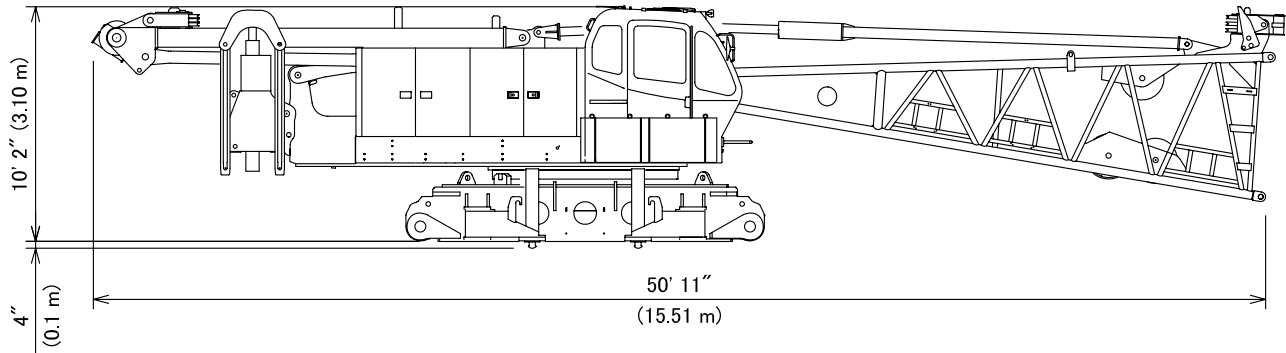
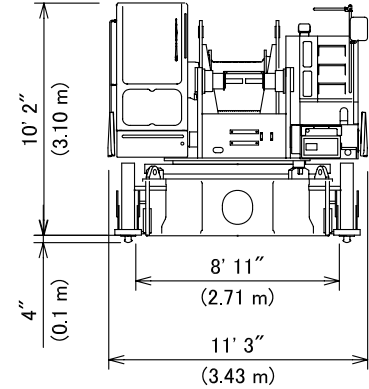
In addition Base Machine-1, optional Front/Rear Free-Fall Break equipped.

Weight: 88,180 lbs (40,000 kg)

### Base Machine-3

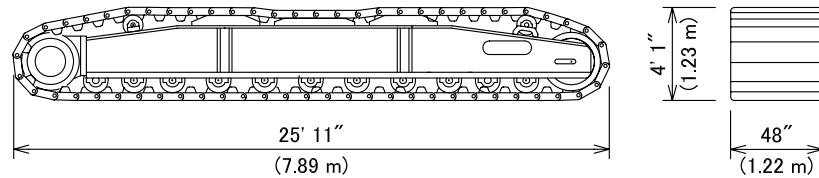
In addition Base Machine-2, optional Third drum and wire rope equipped.

Weight: 92,480 lbs (41,950 kg)



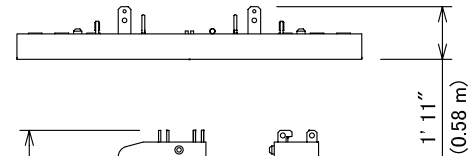
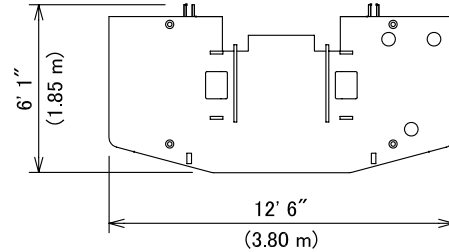
### Crawler

Weight: 36,160 lbs (16,400 kg)



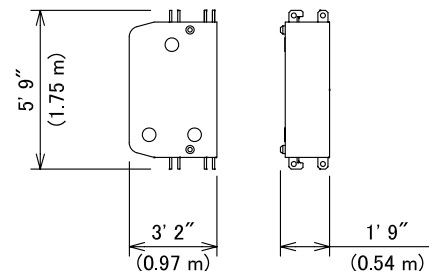
### Counterweight (A)

Weight: 17,640 lbs (8,000 kg)



### Counterweight (B)

Weight: 11,020 lbs (5,000 kg)

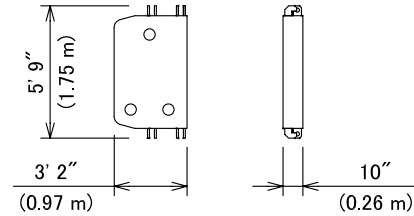


# STERLING CRANE

## Dimension and Weight

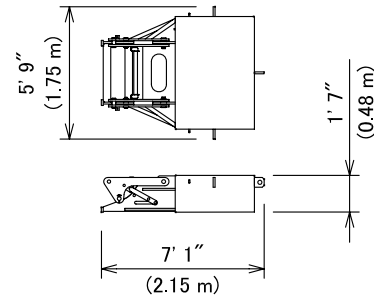
### Counterweight (C) (optional)

Weight: 5,510 lbs (2,500 kg)



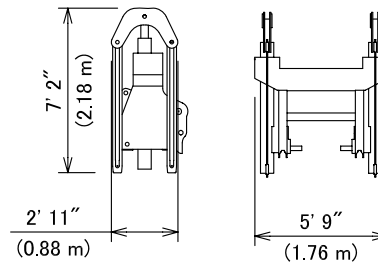
### Carbody Weight (optional)

Weight: 11,030 lbs (5,000 kg)



### Counterweight Self-Removal Cylinder

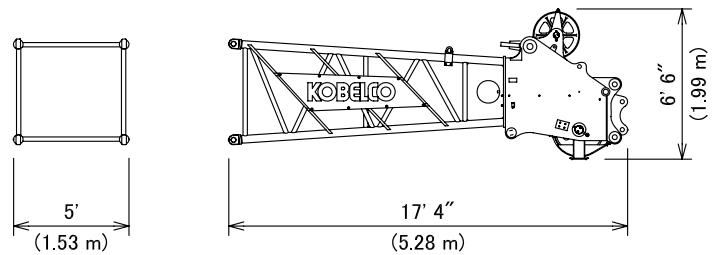
Weight: 3,700 lbs (1,680 kg)



### Boom Tip

Weight: 4,100 lbs (1,860 kg)

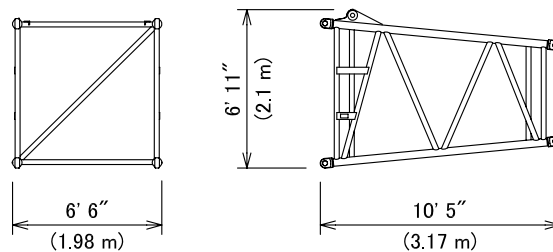
includes guy lines.



### Taper Insert Boom

Weight: 1,190 lbs (540 kg)

includes cable roller.



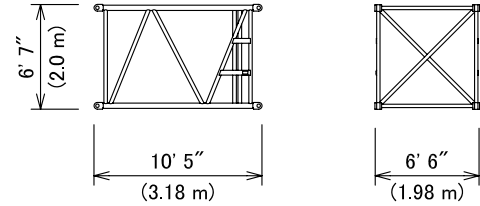
# STERLING CRANE

## Dimension and Weight

### 10 ft Insert Boom

Weight: 1,390 lbs (630 kg)

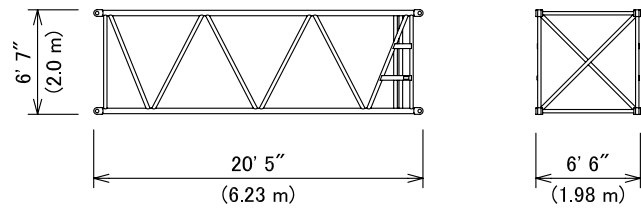
Includes cable roller and guy lines.



### 20 ft Insert Boom

Weight: 2,200 lbs (1,000 kg)

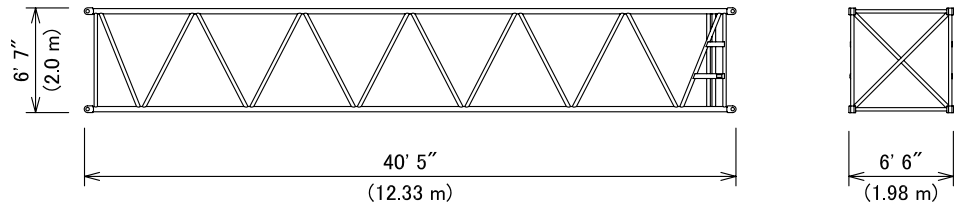
Includes cable roller and guy lines.



### 40 ft Insert Boom

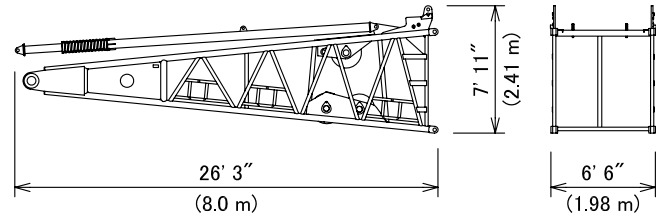
Weight: 3,770 lbs (1,710 kg)

Includes cable roller and guy lines.



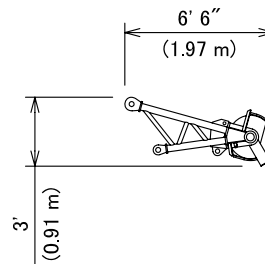
### Boom Base with Backstop

Weight: 8,110 lbs (3,680 kg)



### Auxiliary Sheave

Weight: 650 lbs (290 kg)



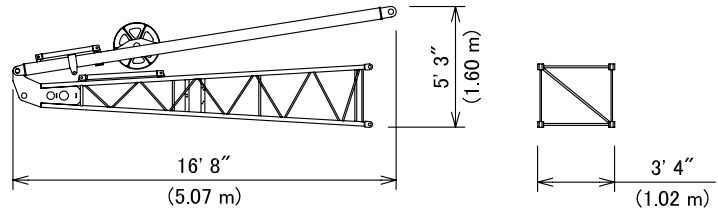
# STERLING CRANE

## Dimension and Weight

### Jib Base with Strut

Weight: 2,270 lbs (1,030 kg)

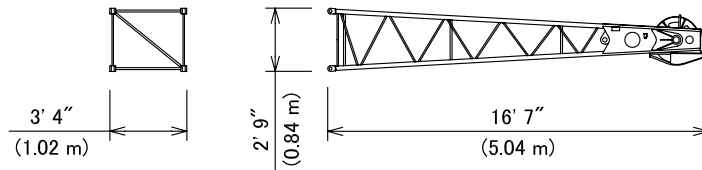
Includes guy lines.



### Jib Tip

Weight: 690 lbs (310 kg)

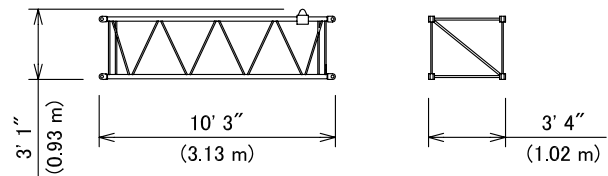
Includes cable roller



### 10 ft Insert Jib

Weight: 270 lbs (120 kg)

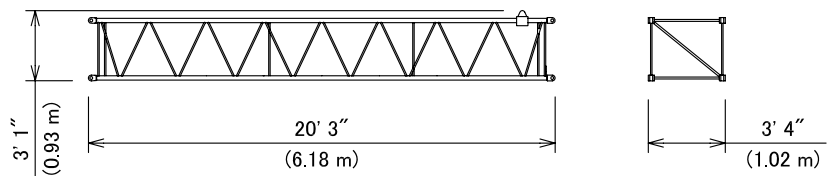
Includes cable roller



### 20 ft Insert Jib

Weight: 520 lbs (240 kg)

Includes cable roller and guy lines

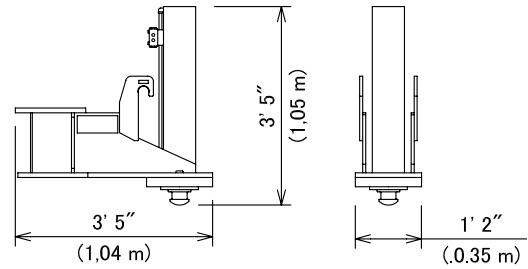


# STERLING CRANE

## Dimension and Weight

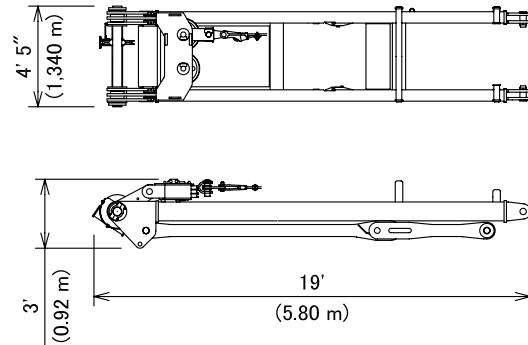
### Translifter

Weight: 820 lbs (370 kg)



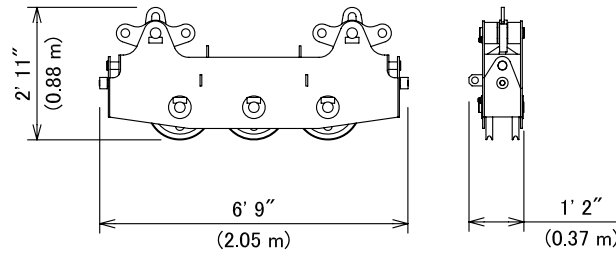
### Gantry with Lower Spreader

Weight: 5,560 lbs (2,520 kg)



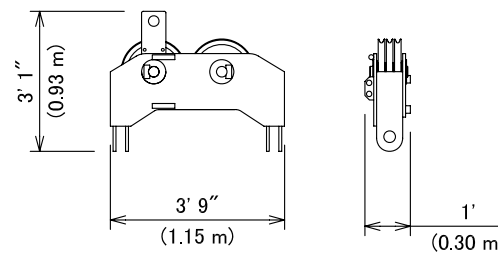
### Upper Spreader

Weight: 1,070 lbs (485 kg)



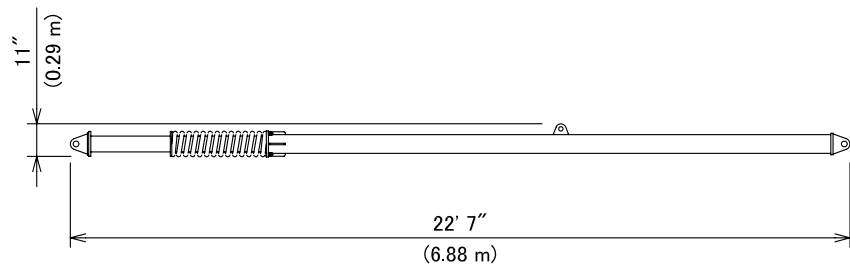
### Lower Spreader

Weight: 700 lbs (320 kg)



### Boom Backstop

Weight: 1,140 lbs (515 kg)



# STERLING CRANE

## Transportation Plan

250 ft boom and 100 ft jib

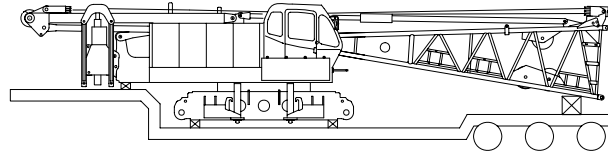
| Description of item            | Weight<br>lbs<br>(kg) | Trailer Loads      |                    |                    |                    |                    |                    |                    |
|--------------------------------|-----------------------|--------------------|--------------------|--------------------|--------------------|--------------------|--------------------|--------------------|
|                                |                       | #1                 | #2                 | #3                 | #4                 | #5                 | #6                 | #7                 |
| Base Machine with Boom Base    | 86,420<br>(39,200)    | 1                  |                    |                    |                    |                    |                    |                    |
| Crawler                        | 36,160<br>(16,400)    |                    | 1                  | 1                  |                    |                    |                    |                    |
| Counterweight (A)              | 17,640<br>(8,000)     |                    |                    |                    |                    | 1                  |                    |                    |
| Counterweight (B)              | 11,020<br>(5,000)     |                    |                    |                    | 3                  | 2                  | 3                  |                    |
| Counterweight (C)              | 5,510<br>(2,500)      |                    |                    |                    |                    |                    |                    | 2                  |
| Carbody Weight                 | 11,030<br>(5,000)     |                    |                    |                    |                    |                    |                    | 2                  |
| 10 ft Insert Boom and Guy Line | 1,390<br>(630)        |                    |                    |                    | 1                  | 1                  |                    |                    |
| 20 ft Inset Boom and Guy Line  | 2,200<br>(1,000)      |                    |                    |                    |                    |                    | 1                  |                    |
| 40 ft Insert Boom and Guy Line | 3,770<br>(1,710)      |                    | 1                  | 1                  | 1                  | 1                  |                    |                    |
| Taper Insert Boom              | 1,190<br>(540)        |                    |                    |                    |                    |                    | 1                  |                    |
| Boom Tip and Guy Line          | 4,100<br>(1,860)      |                    |                    |                    |                    |                    | 1                  |                    |
| Jib Base and Guy Line          | 2,270<br>(1,030)      |                    |                    |                    |                    |                    |                    | 1                  |
| 10 ft Inset Jib                | 270<br>(120)          |                    |                    |                    |                    |                    |                    | 1                  |
| 20 ft Inset Jib and Guy Line   | 520<br>(240)          |                    |                    |                    |                    |                    |                    | 3                  |
| Jib Tip                        | 690<br>(310)          |                    |                    |                    |                    |                    |                    | 1                  |
| Approx. Total Shipping Weight  | lbs<br>(kg)           | 86,420<br>(39,200) | 39,930<br>(18,110) | 39,930<br>(18,110) | 38,220<br>(17,340) | 44,840<br>(20,340) | 40,550<br>(18,400) | 37,870<br>(17,180) |

Target of payload: 45,000 lbs weight, 48 ft long, 8 ft 6 inch width and 13 ft 6 inch height from ground  
Above plan may vary by each state law or specification of trailers.

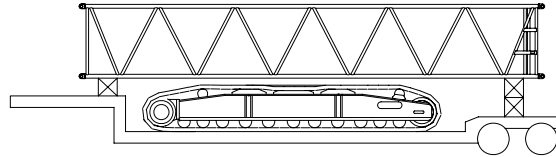
# STERLING CRANE

## Transportation Plan

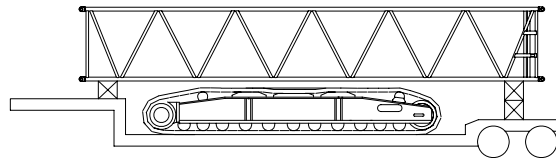
Trailer #1



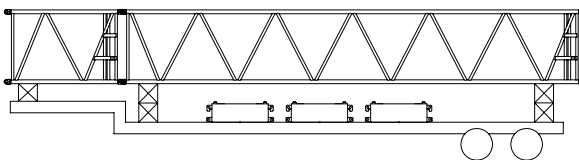
Trailer #2



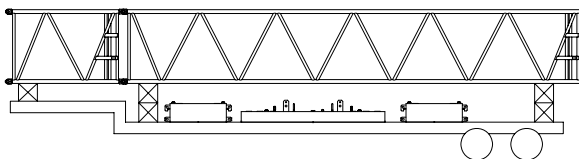
Trailer #3



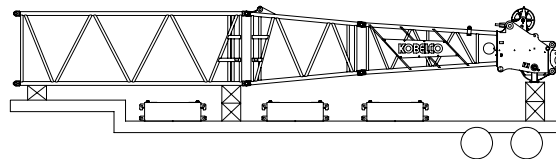
Trailer #4



Trailer #5



Trailer #6



Trailer #7

