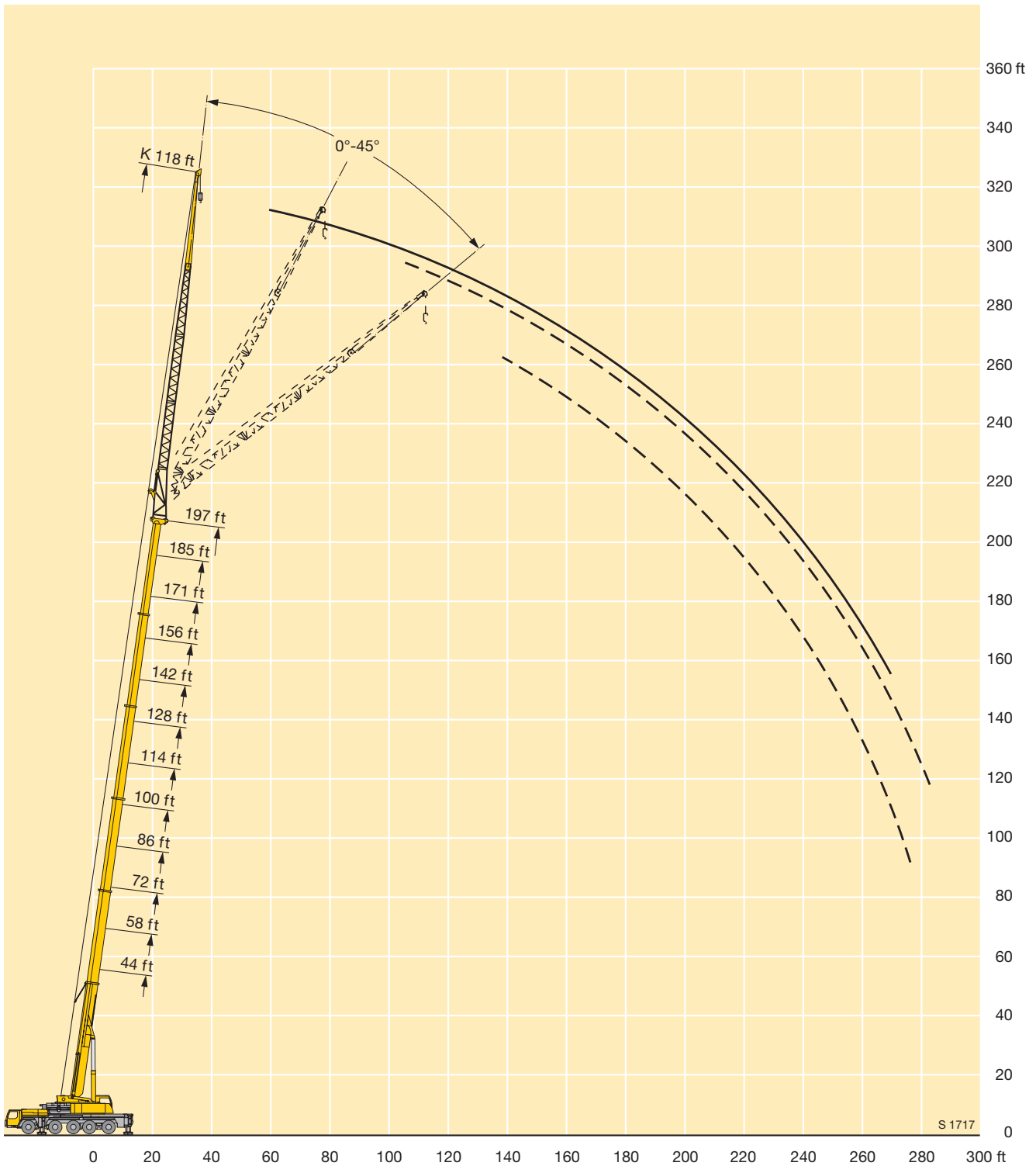




LIFTING CHARTS - All Terrain Cranes

LIEBHERR MODEL LTM 1220-5 - 270 TON CAPACITY

Lifting heights Hauteurs de levage



STERLING CRANE

Lifting capacities on the folding jib with boom extension Forces de levage à la fléchette pliante avec télescope rallongé



ft	44 ft + 23 ft			58 ft + 23 ft			72 ft + 23 ft			86 ft + 23 ft			100 ft + 23 ft			114 ft + 23 ft			ft
	40 ft			40 ft			40 ft			40 ft			40 ft			40 ft			
	0°	22,5°	45°	0°	22,5°	45°	0°	22,5°	45°	0°	22,5°	45°	0°	22,5°	45°	0°	22,5°	45°	
10	46.3																		10
12	46.3			46.3															12
14	46.3			46.3															14
16	46.3			46.3			46.3												16
18	46.3			46.3			46.3		46.3										18
21	46.3			46.3			46.3		46.3			41.8							21
24	46.3	42.5		46.3			46.3		46.2			41.7			38.4				24
27	46.3	41.9		46.3	40.8		46.3		45.6			41.3			38.3				27
30	46.1	39.6		46.2	40.5		46	37.9	44.3			40.7			38.1				30
33	45	37.5		45.6	38.6		44	37.8	42.9			39.8			37.7				33
36	42.1	35.7	25.7	43.5	36.7		42.1	36.2	41.5	35.7		38.9			37				36
39	39.8	34	25.7	41.3	35.3	25.7	40.3	34.9	39.9	34.5		37.8	33.1		36.2				39
45	35.7	31.2	25.7	37.3	32.5	25.7	37.2	32.5	37.1	32.3	25.7	35.6	31.4		34.7	30.5			45
51	32.2	28.9	24.9	34.1	30.2	25.3	34.2	30.2	25.5	34.6	30.4	25.7	33.3	29.7	25.7	32.9	29.3		51
57	29.3	26.8	24	31.2	28.1	24.5	31.4	28	24.8	32.3	28.6	25.2	31	28.2	25.2	31.1	27.9	24.7	57
63	26.7	24.9	23.1	28.8	26.3	23.7	28.6	25.9	23.9	30.1	26.8	24.4	28.6	26.7	24.3	29.2	26.6	24.1	63
69	24.5	23	22.2	26.6	24.6	23	26.3	24.1	22.9	28	25.1	23.4	26.5	25.1	23.4	27.3	25.4	23.2	69
75	22.6	21.3	21.3	24.6	23	22.2	24.3	22.5	21.8	26	23.6	22.4	24.7	23.5	22.4	25.5	24.1	22.4	75
81	20.8	19.8	20.2	23	21.5	21.2	22.4	21.1	20.6	24.3	22.2	21.3	22.9	22	21.4	23.9	22.7	21.6	81
87	19.1	18.5	18.9	21.5	20.2	20.3	20.7	19.8	19.5	22.7	21	20.3	21.2	20.6	20.3	22.4	21.3	20.6	87
93	17.6			20	19	19.4	19.4	18.6	18.5	21.2	19.9	19.4	20	19.3	19.2	21	20.2	19.7	93
99				18.7	18		18.1	17.6	17.6	20	18.9	18.6	18.7	18.2	18.1	19.8	19.1	18.8	99
105				17.4	17		17	16.6	16.8	18.9	17.9	17.8	17.5	17.2	17.2	18.8	18	17.9	105
111				16.4	16.4		15.9	15.7	16	17.8	17.2	17.1	16.6	16.2	16.3	17.7	17.2	17	111
117							15	14.9		16.8	16.4	16.5	15.6	15.3	15.4	16.7	16.3	16.3	117
123							14.2	14.2		16	15.7		14.7	14.6	14.7	15.9	15.5	15.5	123
129										15.2	15		14	13.8	14	15.2	14.8	14.9	129
135										14.6	14.5		13.3	13.1		14.4	14.2	14.3	135
141													12.6	12.5		13.7	13.6	13.7	141
147													12	12		13.2	13		147
153																12.6	12.5		153
159																12.1	12.1		159

TAB 151291 / 151298 / 151305

STERLING CRANE

Lifting capacities on the folding jib with boom extension Forces de levage à la fléchette pliante avec télescope rallongé



ft	128 ft + 23 ft			142 ft + 23 ft			156 ft + 23 ft			171 ft + 23 ft			185 ft + 23 ft			197 ft + 23 ft			ft
	40 ft			40 ft			40 ft			40 ft			40 ft			40 ft			
	0°	22,5°	45°	0°	22,5°	45°	0°	22,5°	45°	0°	22,5°	45°	0°	22,5°	45°	0°	22,5°	45°	
27	34.5																		27
30	34.4			32															30
33	34.2			32															33
36	34			31.8			27.9												36
39	33.6			31.7			27.9			25.7									39
45	32.5			31			27.9			25.7			21.6			18.9			45
51	31.3	27.9		30.3	27.3		27.9			25.7			21.6			18.9			51
57	30	27	23.8	29.3	26.5		27.6	24.3		25.5	22.8		21.6			18.9			57
63	28.6	25.9	23.4	28.1	25.5	22.6	26.8	23.8	21.6	25.3	22.7		21.6	21.1		18.9			63
69	27.1	24.9	22.7	26.9	24.6	22.2	25.9	23.2	21.4	24.8	22.3	19.9	21.4	20.9	18.7	18.9	19.2		69
75	25.5	23.8	22	25.7	23.6	21.6	25	22.4	20.9	24.1	21.8	19.7	21	20.5	18.5	18.9	19	16.3	75
81	24	22.7	21.3	24.3	22.7	21.1	24	21.7	20.2	23.3	21.2	19.3	20.5	20.3	18.1	18.6	18.5	16.2	81
87	22.5	21.5	20.5	23	21.7	20.4	22.8	20.9	19.6	22.5	20.5	18.7	20	19.8	17.7	18.2	17.9	15.9	87
93	21.2	20.4	19.7	21.7	20.7	19.7	21.7	20.1	19	21.6	19.8	18.2	19.5	19.2	17.2	17.7	17.4	15.7	93
99	19.9	19.3	18.8	20.6	19.7	19	20.6	19.3	18.4	20.7	19.1	17.7	18.9	18.6	16.8	17.2	16.7	15.5	99
105	18.6	18.4	18	19.5	18.8	18.2	19.6	18.5	17.9	19.7	18.5	17.2	18.4	18.1	16.4	16.6	16.2	15.2	105
111	17.6	17.4	17.3	18.4	18	17.5	18.7	17.8	17.3	18.8	17.8	16.8	17.8	17.5	16	16	15.6	14.8	111
117	16.7	16.5	16.5	17.4	17.1	16.8	17.8	17	16.8	18.1	17.1	16.3	17.3	16.9	15.6	15.4	15	14.5	117
123	15.7	15.7	15.7	16.6	16.3	16.2	16.9	16.4	16.2	17.3	16.5	15.9	16.7	16.3	15.2	14.8	14.5	14.1	123
129	14.8	14.8	15	15.8	15.6	15.5	16	15.7	15.6	16.5	15.8	15.4	16.1	15.7	14.9	14.2	14	13.7	129
135	14.1	14.1	14.2	14.9	14.9	14.9	15.2	15	15	15.7	15.2	15	15.5	15.2	14.5	13.6	13.5	13.3	135
141	13.4	13.4	13.5	14.2	14.2	14.2	14.5	14.4	14.4	15	14.6	14.5	14.9	14.7	14.2	13	12.9	12.9	141
147	12.7	12.7	12.9	13.6	13.5	13.6	13.7	13.7	13.8	14.3	14	14.1	14.3	14.1	13.9	12.4	12.4	12.5	147
153	12	12.1	12.2	13	12.9	13	12.9	13.1	13.2	13.7	13.5	13.6	13.7	13.6	13.5	11.9	12	12.1	153
159	11.5	11.5		12.4	12.4	12.5	12.4	12.5	12.6	13	13	13.1	13.2	13.1	13.2	11.3	11.5	11.6	159
165	10.9	11		11.8	11.8	11.9	11.7	11.9	12	12.4	12.4	12.6	12.7	12.6	12.7	10.9	11	11.2	165
171	10.4	10.4		11.3	11.3		11.1	11.3	11.5	11.9	11.9	12.1	12.1	12.1	12.3	10.4	10.5	10.7	171
177	9.9	10		10.9	10.9		10.5	10.8	10.9	11.4	11.4	11.6	11.6	11.7	11.8	9.9	10	10.2	177
183	7.1			10.4	10.5		10	10.2	10.3	10.8	10.9	11	11.2	11.2	11.4	9.4	9.6	9.8	183
189				10	10.1		9.5	9.7		10.3	10.4	10.6	10.4	10.8	10.9	9	9.1	9.3	189
195				7.6			9.1	9.2		9.9	10	10.1	9.5	10	10.2	8.6	8.7	8.9	195
207										9	9.2		7.9	8.4	8.5	7.7	8	8.1	207
219													6.5	6.9		6.3	6.7	6.8	219
231																5.1	5.4		231

TAB 151291 / 151298 / 151305

STERLING CRANE

Lifting capacities on the folding jib with boom extension Forces de levage à la fléchette pliante avec télescope rallongé



ft	44 ft + 23 ft			58 ft + 23 ft			72 ft + 23 ft			86 ft + 23 ft			100 ft + 23 ft			114 ft + 23 ft			ft
	63 ft			63 ft			63 ft			63 ft			63 ft			63 ft			
	0°	22,5°	45°	0°	22,5°	45°	0°	22,5°	45°	0°	22,5°	45°	0°	22,5°	45°	0°	22,5°	45°	
14	41.2																		14
16	41			37.4															16
18	40.8			37.2			32.7												18
21	40.3			36.9			32.7			30.3									21
24	39.6			36.5			32.7			30.3			27.2						24
27	38.4			36.2			32.4			30.3			27.2			24			27
30	36.7			35.6			32.1			30			27.2			24			30
33	35			34.3			31.8			29.8			27.1			24			33
36	33.4			33			31.1			29.5			26.9			24			36
39	31.9	26.3		31.7			30.2			29.2			26.6			23.8			39
45	28.8	24.5		29.3	24.7		28.3	24		27.7			26			23.6			45
51	26.3	22.8		27	23.4		26.5	22.7		26.1	21.8		24.9	21.2		23.2			51
57	24	21.2	18	24.9	21.8	18	24.8	21.4		24.7	21		23.7	20.4		22.5	19.7		57
63	21.9	19.6	17.5	23	20.5	17.6	23.1	20.2	17	23.3	20	17	22.6	19.5		21.8	19.1		63
69	20.1	18.1	16.8	21.2	19.2	17	21.6	19.1	16.8	21.9	19.1	16.8	21.4	18.6	16.3	21	18.3		69
75	18.4	16.8	16.2	19.6	18	16.4	20.1	18.1	16.3	20.6	18.1	16.3	20.3	17.8	16.1	20.2	17.7	15.6	75
81	16.8	15.6	15.4	18.2	17	15.7	18.7	17.1	15.7	19.4	17.3	15.7	19.2	17.1	15.5	19.3	17	15.4	81
87	15.6	14.5	14.5	16.9	16	15	17.6	16.2	15	18.2	16.5	15.1	18.2	16.4	15	18.5	16.3	14.9	87
93	14.4	13.6	13.7	15.7	15.1	14.2	16.5	15.4	14.4	17.1	15.8	14.5	17.2	15.7	14.4	17.6	15.7	14.4	93
99	13.4	12.8	13	14.7	14.2	13.6	15.4	14.5	13.8	16.2	15	14	16.2	15	14	16.8	15.1	13.9	99
105	12.5	12	12.4	13.7	13.4	13	14.5	13.8	13.2	15.3	14.3	13.5	15.3	14.4	13.5	16	14.5	13.5	105
111	11.6	11.3	11.9	12.9	12.7	12.5	13.6	13.1	12.7	14.4	13.7	13	14.4	13.8	13.1	15.2	14	13.1	111
117	10.8	10.7		12.1	12.1	12.1	12.8	12.4	12.2	13.8	13.1	12.6	13.6	13.2	12.7	14.5	13.5	12.7	117
123				11.4	11.5		12.1	11.8	11.7	13.1	12.5	12.2	12.8	12.6	12.3	13.7	13	12.4	123
129				10.7	11		11.5	11.3	11.3	12.5	12	11.8	12.1	12	11.8	13	12.5	12.1	129
135							10.9	10.8		11.9	11.6	11.5	11.5	11.4	11.4	12.4	12	11.7	135
141							10.3	10.4		11.4	11.1	11.2	10.8	10.9	10.9	11.8	11.4	11.4	141
147										10.9	10.7		10.3	10.3	10.4	11.3	11	11	147
153										10.4	10.4		9.8	9.8		10.7	10.5	10.6	153
159										10.1			9.3	9.4		10.2	10.1	10.2	159
165													8.8	8.9		9.8	9.6		165
171													8.4			9.4	9.3		171
177													8.2			8.9	8.9		177
183																8.6	8.6		183
189																8.3			189

TAB 151291 / 151298 / 151305

STERLING CRANE

Lifting capacities on the folding jib with boom extension Forces de levage à la fléchette pliante avec télescope rallongé



ft	128 ft + 23 ft			142 ft + 23 ft			156 ft + 23 ft			171 ft + 23 ft			185 ft + 23 ft			197 ft + 23 ft			ft
	63 ft			63 ft			63 ft			63 ft			63 ft			63 ft			
	0°	22,5°	45°	0°	22,5°	45°	0°	22,5°	45°	0°	22,5°	45°	0°	22,5°	45°	0°	22,5°	45°	
30	21.8																		30
33	21.8																		33
36	21.8			20.4															36
39	21.8			20.4			18.7												39
45	21.6			20.4			18.7		17.2				15.8						45
51	21.6			20.2			18.7		17.2				15.8			13.8			51
57	21.2			20.1			18.7		17.2				15.8			13.8			57
63	20.6	18.2		19.8	17.7		18.5		17.1				15.8			13.8			63
69	20.1	17.8		19.3	17.3		18.2	16.3	16.9	15.5			15.6			13.8			69
75	19.5	17.2	15	18.9	16.8		17.9	16.2	16.7	15.4			15.5	14.3		13.8			75
81	18.8	16.6	14.9	18.4	16.3	14.3	17.5	15.9	13.8	16.4	15.2		15.4	14.2		13.7	12.9		81
87	18.1	16	14.4	17.8	15.8	14.3	17.1	15.4	13.8	16.2	14.9	13.1	15.2	14		13.6	12.8		87
93	17.4	15.4	14	17.2	15.3	14	16.6	14.9	13.6	15.9	14.5	13.1	15	13.8	12.4	13.5	12.6	11.2	93
99	16.7	14.9	13.7	16.6	14.8	13.6	16.1	14.5	13.4	15.5	14.1	12.8	14.7	13.6	12.4	13.4	12.4	11.2	99
105	16	14.4	13.3	16	14.3	13.3	15.6	14	13	15.1	13.7	12.6	14.4	13.3	12.1	13.3	12.4	11.2	105
111	15.3	13.9	13	15.4	13.9	12.9	15.1	13.6	12.7	14.7	13.4	12.5	14.1	12.9	12.1	13	12.2	11.2	111
117	14.6	13.4	12.7	14.8	13.4	12.6	14.6	13.2	12.4	14.3	13	12.2	13.8	12.6	11.9	12.6	11.9	11	117
123	13.9	13	12.4	14.2	13	12.3	14.1	12.9	12.2	13.9	12.7	12	13.4	12.3	11.7	12.2	11.7	10.9	123
129	13.2	12.6	12.1	13.6	12.7	12	13.6	12.5	11.9	13.5	12.4	11.7	13.1	12.1	11.5	11.9	11.4	10.7	129
135	12.6	12.1	11.8	13	12.3	11.8	13.1	12.2	11.7	13	12	11.5	12.7	11.8	11.3	11.5	11.1	10.5	135
141	11.9	11.7	11.5	12.5	11.9	11.6	12.6	11.8	11.5	12.6	11.7	11.3	12.4	11.5	11.1	11.1	10.8	10.3	141
147	11.3	11.2	11.1	11.9	11.5	11.3	12.1	11.5	11.2	12.2	11.5	11.1	12	11.3	10.9	10.7	10.4	10.1	147
153	10.7	10.7	10.8	11.3	11.1	11	11.5	11.2	11	11.7	11.2	10.9	11.6	11	10.8	10.3	10.1	9.9	153
159	10.2	10.2	10.4	10.8	10.7	10.7	11	10.8	10.8	11.3	10.9	10.7	11.3	10.8	10.6	9.9	9.8	9.7	159
165	9.7	9.8	9.9	10.3	10.3	10.4	10.5	10.4	10.5	10.8	10.6	10.6	10.9	10.5	10.4	9.5	9.5	9.5	165
171	9.2	9.3	9.5	9.9	9.9	10	10	10.1	10.1	10.4	10.3	10.3	10.5	10.3	10.2	9	9.1	9.2	171
177	8.7	8.8	9	9.4	9.4	9.6	9.6	9.7	9.8	10	9.9	10	10.1	10	10	8.7	8.8	8.9	177
183	8.3	8.4		9	9	9.2	9.1	9.3	9.4	9.5	9.6	9.7	9.7	9.7	9.7	8.3	8.5	8.6	183
189	7.9	8		8.6	8.6	8.8	8.7	8.8	9	9.1	9.2	9.4	9.3	9.3	9.5	7.9	8.1	8.3	189
195	7.5	7.6		8.2	8.3		8.2	8.4	8.6	8.7	8.9	9	8.9	9	9.2	7.5	7.8	8	195
207				7.5	7.6		7.4	7.6	7.7	8	8.1	8.3	8.1	8.4	8.6	6.8	7	7.2	207
219							6.6	6.8		7.3	7.4	7.5	6.7	7.5	7.7	6.2	6.4	6.5	219
231										6.6	6.7		5.5	6.1		5.2	5.7	5.9	231
243													4.5	4.9		4.2	4.8		243
255																3.1	3.6		255

TAB 151291 / 151298 / 151305

STERLING CRANE

Lifting capacities on the folding jib with boom extension Forces de levage à la fléchette pliante avec télescope rallongé



ft	44 ft + 23 ft			58 ft + 23 ft			72 ft + 23 ft			86 ft + 23 ft			100 ft + 23 ft			114 ft + 23 ft			ft
	72 ft			72 ft			72 ft			72 ft			72 ft			72 ft			
	0°	22,5°	45°	0°	22,5°	45°	0°	22,5°	45°	0°	22,5°	45°	0°	22,5°	45°	0°	22,5°	45°	
14	23.3																		14
16	23.3			22.1															16
18	23.3			22.1			20.6												18
21	23.3			22.1			20.6			19.6									21
24	23.2			22.1			20.6			19.6			18.4						24
27	23			22.1			20.6			19.6			18.4			17.7			27
30	22.7			22			20.6			19.6			18.4			17.7			30
33	22.4			21.8			20.6			19.6			18.4			17.7			33
36	22.1			21.6			20.6			19.6			18.4			17.7			36
39	21.7			21.3			20.4			19.6			18.4			17.7			39
45	20.9	18.2		20.7	18		19.9			19.4			18.2			17.7			45
51	20.1	17.5		20	17.4		19.4	17		19			18			17.5			51
57	19.2	16.7		19.3	16.7		18.8	16.5		18.5	16.2		17.7	15.8		17.2			57
63	18.4	16	13.1	18.6	16	13.1	18.2	15.9		18	15.8		17.3	15.5		16.9	15.1		63
69	17.5	15.2	12.9	17.8	15.4	12.9	17.7	15.3	12.6	17.5	15.3		16.9	15.1		16.5	14.9		69
75	16.7	14.6	12.5	17.1	14.8	12.6	17.1	14.8	12.4	16.9	14.8	12.3	16.4	14.6	12.2	16.1	14.5		75
81	15.8	14	12.2	16.3	14.3	12.3	16.4	14.3	12.1	16.4	14.4	12.2	16	14.2	12.1	15.7	14.2	11.9	81
87	14.9	13.4	11.9	15.5	13.8	12	15.8	13.9	12	15.9	14	12	15.5	13.9	11.9	15.3	13.8	11.9	87
93	14	12.9	11.7	14.7	13.3	11.8	15.1	13.4	11.8	15.3	13.5	11.8	15	13.5	11.7	14.9	13.5	11.7	93
99	13	12.3	11.6	13.9	12.8	11.6	14.3	13	11.6	14.7	13.1	11.7	14.5	13.2	11.6	14.4	13.1	11.6	99
105	12.2	11.7	11.4	13.2	12.2	11.4	13.6	12.6	11.5	14.1	12.7	11.5	14.1	12.8	11.5	14	12.8	11.4	105
111	11.4	11	11	12.4	11.7	11.2	12.9	12	11.4	13.4	12.3	11.3	13.5	12.4	11.4	13.6	12.4	11.3	111
117	10.7	10.5	10.6	11.7	11.1	11	12.3	11.5	11.1	12.8	11.8	11.2	12.9	11.9	11.2	13.1	12	11.2	117
123	10	9.9		11.1	10.6	10.6	11.7	11	10.8	12.2	11.4	11	12.3	11.5	11	12.7	11.6	11	123
129	9.4			10.5	10.2	10.4	11.1	10.6	10.5	11.7	10.9	10.7	11.7	11.1	10.7	12.2	11.2	10.8	129
135				9.9	9.7		10.6	10.2	10.2	11.2	10.5	10.5	11.2	10.7	10.5	11.7	10.9	10.5	135
141				9.4			10.1	9.8		10.7	10.2	10.2	10.6	10.4	10.3	11.2	10.6	10.3	141
147							9.6	9.4		10.3	9.9	10.1	10.1	10	10	10.8	10.3	10.1	147
153							9.1			9.9	9.6		9.6	9.5	9.6	10.3	10	9.9	153
159										9.5	9.3		9.1	9.1	9.3	9.8	9.6	9.7	159
165										9.1			8.7	8.7		9.4	9.2	9.4	165
171													8.3	8.3		9	8.9	9.1	171
177													7.9	7.9		8.6	8.6	8.8	177
183													7.6	7.7		8.3	8.3		183
189																7.9	8		189
195																7.6	7.8		195

TAB 151291 / 151298 / 151305

STERLING CRANE

Lifting capacities on the folding jib with boom extension Forces de levage à la fléchette pliante avec télescope rallongé

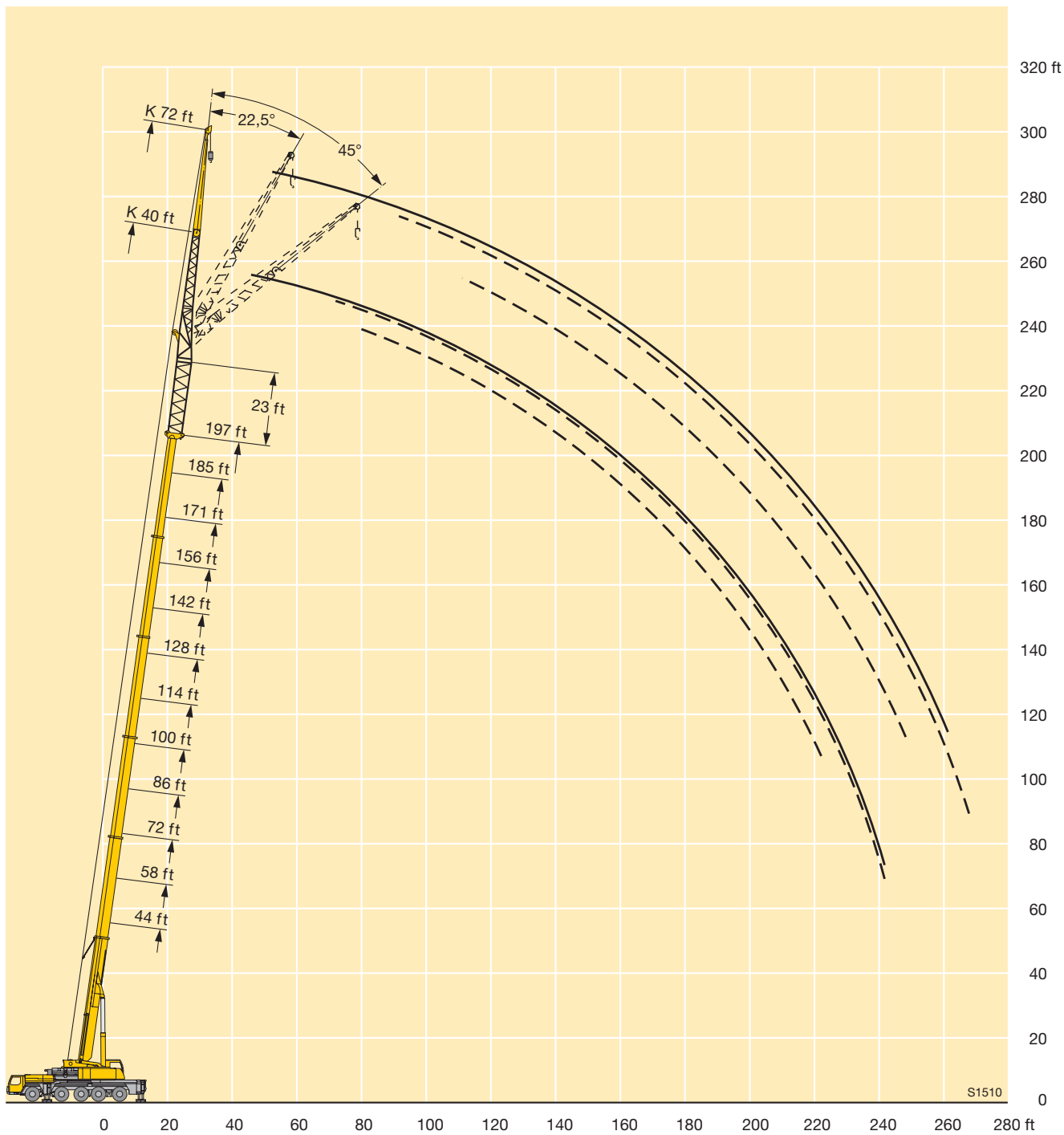


ft	128 ft + 23 ft			142 ft + 23 ft			156 ft + 23 ft			171 ft + 23 ft			185 ft + 23 ft			197 ft + 23 ft			ft
	72 ft			72 ft			72 ft			72 ft			72 ft			72 ft			
	0°	22,5°	45°	0°	22,5°	45°	0°	22,5°	45°	0°	22,5°	45°	0°	22,5°	45°	0°	22,5°	45°	
30	16.5																		30
33	16.5																		33
36	16.5			15.8															36
39	16.5			15.8			14.8												39
45	16.5			15.8			14.8		13.8			12.9							45
51	16.5			15.8			14.8		13.8			12.9				11.4			51
57	16.3			15.7			14.8		13.8			12.9				11.4			57
63	16.1	14.8		15.5			14.7		13.8			12.9				11.4			63
69	15.8	14.6		15.3	14.2		14.6		13.7			12.8				11.4			69
75	15.5	14.2		15	14		14.4	13.3	13.6	12.9		12.7				11.4			75
81	15.2	13.9	11.6	14.8	13.7		14.1	13.3	13.5	12.8		12.6	12.1			11.4			81
87	14.8	13.5	11.6	14.5	13.4	11.4	13.9	13.1	13.3	12.6		12.6	12.1			11.4	10.9		87
93	14.5	13.3	11.6	14.2	13.1	11.4	13.7	12.9	11.2	13.1	12.6	10.9	12.4	12.1		11.3	10.9		93
99	14.1	13	11.5	13.8	12.9	11.4	13.4	12.6	11.2	12.9	12.3	10.9	12.3	11.9	10.7	11.2	10.9		99
105	13.7	12.6	11.4	13.5	12.6	11.2	13.1	12.3	11.2	12.7	12.1	10.9	12.1	11.6	10.7	11.1	10.9		105
111	13.4	12.3	11.2	13.2	12.2	11.2	12.9	12	10.9	12.5	11.8	10.9	11.9	11.4	10.7	11	10.7	9.9	111
117	13	11.9	11.1	12.9	11.9	11.1	12.6	11.7	10.9	12.2	11.5	10.8	11.7	11.1	10.5	10.9	10.5	9.9	117
123	12.6	11.6	10.9	12.5	11.5	10.9	12.3	11.4	10.7	12	11.2	10.6	11.5	10.9	10.4	10.7	10.3	9.9	123
129	12.1	11.2	10.7	12.2	11.2	10.7	12	11.1	10.5	11.7	10.9	10.4	11.4	10.6	10.2	10.5	10.1	9.8	129
135	11.7	10.9	10.5	11.8	10.9	10.5	11.7	10.8	10.4	11.5	10.7	10.2	11.2	10.4	10	10.4	9.9	9.6	135
141	11.3	10.6	10.3	11.5	10.6	10.3	11.4	10.5	10.2	11.2	10.4	10.1	10.9	10.2	9.8	10.2	9.7	9.5	141
147	10.8	10.3	10.1	11.1	10.4	10.1	11.1	10.3	10	10.9	10.2	9.9	10.7	10	9.7	10	9.5	9.3	147
153	10.4	10	9.9	10.7	10.1	9.9	10.7	10.1	9.8	10.7	10	9.7	10.4	9.8	9.6	9.7	9.4	9.2	153
159	9.9	9.8	9.7	10.3	9.8	9.7	10.4	9.8	9.7	10.4	9.7	9.6	10.2	9.6	9.4	9.4	9.2	9	159
165	9.5	9.5	9.6	9.9	9.6	9.6	10	9.6	9.5	10.1	9.6	9.5	10	9.4	9.3	9	9	8.9	165
171	9	9.1	9.3	9.5	9.4	9.4	9.7	9.3	9.4	9.8	9.3	9.3	9.7	9.2	9.2	8.7	8.7	8.7	171
177	8.5	8.7	8.8	9.1	9.1	9.2	9.3	9.1	9.2	9.5	9.1	9.2	9.4	9	9.1	8.4	8.4	8.5	177
183	8.1	8.3	8.5	8.7	8.8	8.9	8.9	8.9	9	9.2	8.9	9	9.1	8.8	9	8	8.1	8.3	183
189	7.8	7.9		8.3	8.4	8.6	8.5	8.6	8.8	8.7	8.8	8.7	8.9	8.6	8.9	7.7	7.8	8	189
195	7.4	7.5		8	8.1	8.3	8.1	8.3	8.5	8.5	8.5	8.7	8.6	8.5	8.7	7.3	7.6	7.8	195
207	6.7	6.8		7.4	7.4		7.3	7.5	7.7	7.8	7.9	8.1	8	8	8.3	6.7	6.9	7.2	207
219				6.7	6.9		6.6	6.8		7.1	7.3	7.5	7.1	7.5	7.8	6	6.3	6.5	219
231							5.9			6.5	6.7		5.9	6.6	6.8	5.5	5.7	5.9	231
243										5.9	6.1		4.9	5.3		4.5	5.1	5.2	243
255													3.8	4.3		3.5	4.1		255
267																2.5	3		267

TAB 151291 / 151298 / 151305

STERLING CRANE

Lifting heights Hauteurs de levage



STERLING CRANE

Lifting capacities on the folding jib with boom extension Forces de levage à la fléchette pliante avec télescope rallongé



ft	44 ft + 23 ft			58 ft + 23 ft			72 ft + 23 ft			86 ft + 23 ft			100 ft + 23 ft			114 ft + 23 ft			ft
	86 ft			86 ft			86 ft			86 ft			86 ft			86 ft			
	0°	22,5°	45°	0°	22,5°	45°	0°	22,5°	45°	0°	22,5°	45°	0°	22,5°	45°	0°	22,5°	45°	
18	26			23															18
21	26			23			20.6												21
24	25.9			23			20.6			19.4									24
27	25.6			23			20.6			19.4			17.5						27
30	25.2			23			20.6			19.4			17.5			16.5			30
33	24.6			22.8			20.6			19.4			17.5			16.5			33
36	23.9			22.6			20.6			19.4			17.5			16.5			36
39	23.2			22.3			20.5			19.2			17.5			16.5			39
45	21.7			21.5			20			19			17.4			16.5			45
51	20.2	16		20.6			19.5			18.6			17.2			16.3			51
57	18.7	15.2		19.5	14.9		18.7	14.6		18.1			16.9			16.1			57
63	17.3	14.3		18.3	14.3		17.8	14		17.5	13.6		16.6			15.8			63
69	16	13.4		17.2	13.5		16.9	13.3		16.7	13.3		16.1	12.7		15.5	12.4		69
75	14.8	12.6	9.8	16.1	12.8	9.8	16	12.7		15.9	12.7		15.4	12.5		15	12.2		75
81	13.7	11.9	9.6	15	12.2	9.6	15.1	12.1	9.2	15.1	12.2	9.2	14.7	12		14.5	11.7		81
87	12.7	11.3	9.3	14	11.6	9.3	14.2	11.6	9.2	14.4	11.7	9.2	14	11.5	9	13.9	11.3		87
93	11.7	10.7	9	13.2	11	9	13.4	11.1	9	13.6	11.2	9	13.4	11.1	8.9	13.3	11.1	8.7	93
99	10.8	10.2	8.7	12.3	10.5	8.8	12.6	10.6	8.8	12.9	10.8	8.8	12.8	10.7	8.7	12.8	10.7	8.7	99
105	10.1	9.7	8.4	11.4	10	8.5	11.9	10.2	8.6	12.2	10.4	8.6	12.2	10.4	8.5	12.3	10.4	8.5	105
111	9.3	9.3	8.3	10.8	9.7	8.3	11.2	9.8	8.4	11.6	10	8.4	11.6	10	8.4	11.7	10.1	8.4	111
117	8.7	8.8	8.1	10.1	9.3	8.2	10.5	9.4	8.2	11	9.7	8.2	11.1	9.7	8.2	11.2	9.8	8.2	117
123	8.1	8.3	8	9.5	8.9	8.1	10	9.1	8.1	10.4	9.3	8.1	10.6	9.4	8.1	10.7	9.5	8.1	123
129	7.6	7.9	7.9	8.9	8.4	8	9.5	8.7	8	9.9	9	8	10.1	9	8	10.3	9.2	8	129
135	7.1	7.5		8.4	8	7.9	8.9	8.3	7.9	9.4	8.6	7.9	9.7	8.7	7.9	9.9	8.9	7.9	135
141	6.7			7.9	7.6	7.7	8.5	8	7.8	9	8.3	7.8	9.2	8.4	7.8	9.5	8.6	7.8	141
147				7.5	7.3		8.1	7.7	7.7	8.6	8	7.7	8.8	8.1	7.7	9.1	8.3	7.8	147
153				7			7.7	7.4		8.2	7.7	7.6	8.4	7.8	7.6	8.7	8	7.7	153
159							7.3	7.1		7.8	7.4	7.5	8	7.5	7.5	8.4	7.7	7.5	159
165							6.9			7.5	7.2		7.6	7.3	7.4	8.1	7.5	7.4	165
171										7.1	7		7.2	7.1	7.2	7.7	7.3	7.3	171
177										6.8	6.8		6.9	6.8	7	7.4	7.1	7.2	177
183										6.6	6.8		6.5	6.5		7.1	6.9	7.1	183
189													6.2	6.2		6.8	6.7	6.9	189
195													5.9	6		6.5	6.5		195
207																5.9	6.1		207

TAB 151291 / 151298 / 151305

STERLING CRANE

Lifting capacities on the folding jib with boom extension Forces de levage à la fléchette pliante avec télescope rallongé

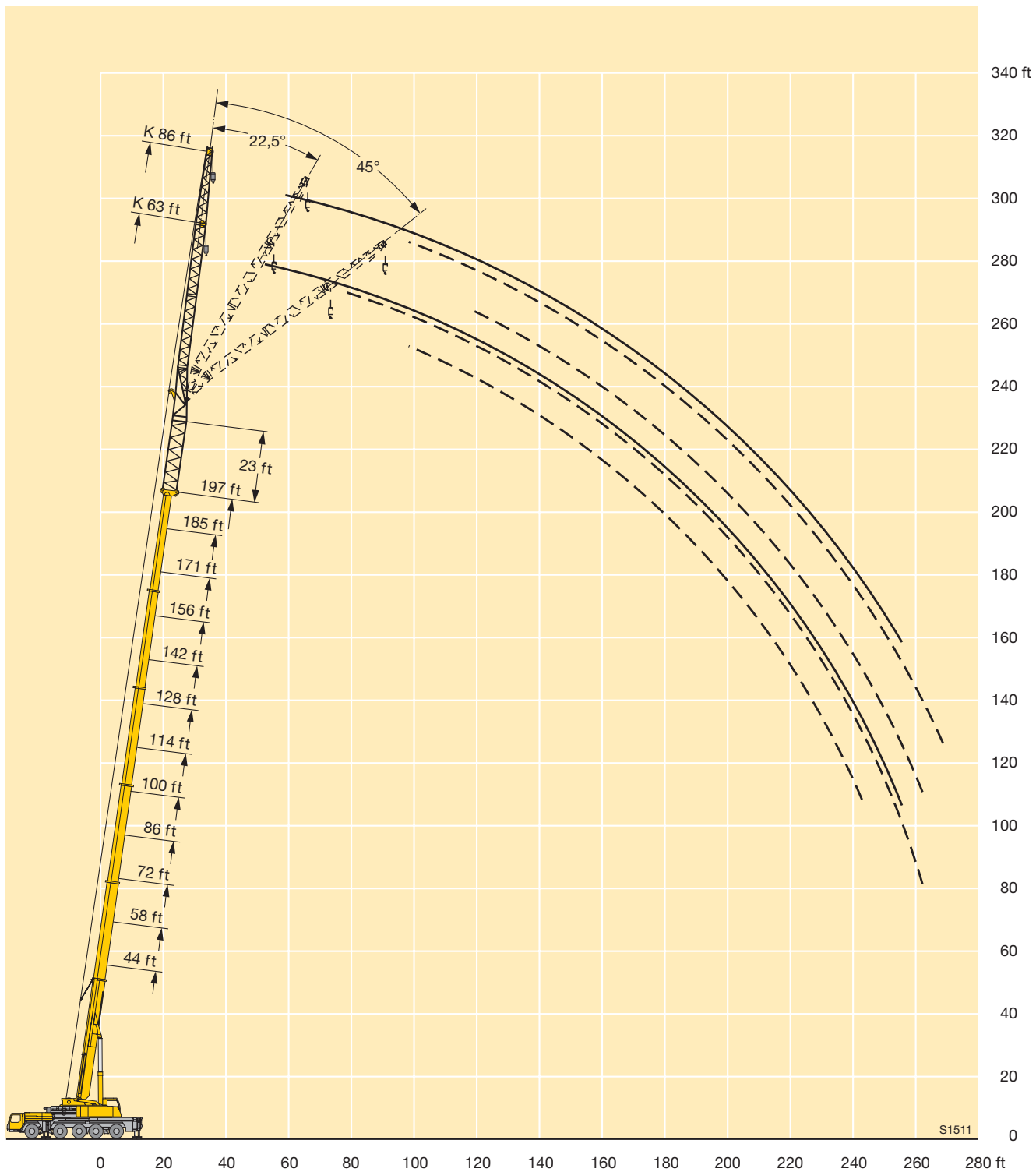


ft	128 ft + 23 ft			142 ft + 23 ft			156 ft + 23 ft			171 ft + 23 ft			185 ft + 23 ft			197 ft + 23 ft			ft
	86 ft			86 ft			86 ft			86 ft			86 ft			86 ft			
	0°	22,5°	45°	0°	22,5°	45°	0°	22,5°	45°	0°	22,5°	45°	0°	22,5°	45°	0°	22,5°	45°	
36	15																		36
39	15			14.3															39
45	15			14.3			13.1			12.1									45
51	15			14.3			13.1			12.1			11.2						51
57	15			14.3			13.1			12.1			11.2			9.7			57
63	14.8			14.2			13.1			12.1			11.2			9.7			63
69	14.5			14			13			12.1			11.1			9.7			69
75	14.2	11.6		13.7	11.6		12.8			12			11			9.7			75
81	13.8	11.6		13.4	11.5		12.6	10.7		11.9	10.4		10.9			9.7			81
87	13.4	11.3		13.1	11.1		12.4	10.7		11.7	10.4		10.9	9.7		9.7			87
93	12.9	10.9	8.5	12.7	10.8		12.1	10.6		11.4	10.2		10.7	9.7		9.6	8.7		93
99	12.5	10.6	8.5	12.3	10.5	8.4	11.8	10.3	8	11.2	10.1		10.6	9.7		9.5	8.7		99
105	12	10.3	8.3	11.9	10.2	8.4	11.5	10	8	11	9.9		10.5	9.5		9.4	8.7		105
111	11.6	10	8.3	11.5	9.9	8.2	11.1	9.8	8	10.7	9.6	7.8	10.3	9.3		9.3	8.5		111
117	11.1	9.7	8.1	11.1	9.7	8.1	10.8	9.5	8	10.4	9.3	7.8	10	9.1	7.8	9.2	8.5	7.3	117
123	10.7	9.4	8	10.7	9.4	8	10.5	9.3	7.9	10.2	9.1	7.8	9.8	8.8	7.7	9	8.3	7.3	123
129	10.3	9.1	7.9	10.4	9.1	7.9	10.1	9	7.8	9.9	8.8	7.7	9.5	8.6	7.6	8.8	8.1	7.3	129
135	9.9	8.8	7.9	10	8.8	7.8	9.8	8.8	7.7	9.6	8.6	7.6	9.3	8.4	7.5	8.6	7.9	7.3	135
141	9.5	8.6	7.8	9.6	8.6	7.7	9.5	8.5	7.7	9.3	8.4	7.6	9	8.2	7.5	8.4	7.7	7.2	141
147	9.2	8.3	7.7	9.3	8.3	7.7	9.2	8.2	7.6	9.1	8.2	7.5	8.8	8	7.4	8.2	7.6	7.1	147
153	8.8	8	7.6	9	8.1	7.6	8.9	8	7.5	8.8	8	7.4	8.5	7.8	7.3	8	7.4	7	153
159	8.5	7.8	7.5	8.7	7.9	7.5	8.6	7.8	7.4	8.5	7.7	7.3	8.4	7.6	7.2	7.8	7.3	6.9	159
165	8.2	7.6	7.4	8.4	7.6	7.4	8.4	7.6	7.3	8.3	7.6	7.2	8.1	7.4	7.1	7.5	7.1	6.8	165
171	7.8	7.4	7.3	8.1	7.4	7.3	8.1	7.4	7.2	8.1	7.4	7.1	7.9	7.2	7	7.3	7	6.8	171
177	7.5	7.1	7.2	7.8	7.2	7.2	7.9	7.2	7.1	7.9	7.2	7	7.7	7.1	6.9	7.1	6.8	6.7	177
183	7.1	6.9	7	7.5	7.1	7.1	7.6	7.1	7	7.6	7	6.9	7.5	6.9	6.8	6.9	6.6	6.6	183
189	6.8	6.7	6.9	7.2	6.9	7	7.3	6.9	6.9	7.5	6.9	6.8	7.4	6.8	6.8	6.7	6.5	6.5	189
195	6.5	6.4	6.7	6.9	6.7	6.8	7	6.8	6.9	7.2	6.7	6.8	7.2	6.6	6.7	6.4	6.3	6.4	195
207	5.8	5.9		6.4	6.3	6.5	6.4	6.4	6.6	6.7	6.5	6.7	6.8	6.4	6.6	5.8	5.9	6.1	207
219	5.3	5.4		5.8	5.8		5.8	5.9	6.1	6.2	6.1	6.4	6.4	6.2	6.5	5.2	5.4	5.7	219
231				5.3			5.2	5.4		5.6	5.7	6	5.6	5.9	6.2	4.7	4.9	5.1	231
243							4.6			5.1	5.3		4.6	5.3	5.6	4.2	4.4	4.6	243
255										4.6	4.8		3.5	4.3	4.3	3.2	4	4.1	255
267													2.6	3.1	3.1	2.9	2.9	2.6	267

TAB 151291 / 151298 / 151305

STERLING CRANE

Lifting heights Hauteurs de levage



STERLING CRANE

Lifting capacities on the folding jib with boom extension Forces de levage à la fléchette pliante avec télescope rallongé



ft	44 ft + 23 ft			58 ft + 23 ft			72 ft + 23 ft			86 ft + 23 ft			100 ft + 23 ft			114 ft + 23 ft			ft
	95 ft			95 ft			95 ft			95 ft			95 ft			95 ft			
	0°	22,5°	45°	0°	22,5°	45°	0°	22,5°	45°	0°	22,5°	45°	0°	22,5°	45°	0°	22,5°	45°	
18	17.2																		18
21	17.2			16.5															21
24	17.2			16.5			15.3			14.6									24
27	17.2			16.5			15.3			14.6			13.6						27
30	17.2			16.5			15.3			14.6			13.6			12.9			30
33	17.2			16.5			15.3			14.6			13.6			12.9			33
36	17.2			16.5			15.3			14.6			13.6			12.9			36
39	17.1			16.4			15.3			14.6			13.6			12.9			39
45	16.6			16.1			15.1			14.5			13.6			12.9			45
51	16			15.7			14.9			14.3			13.5			12.9			51
57	15.3	12.7		15.2	12.6		14.6			14.1			13.3			12.8			57
63	14.6	12.2		14.6	12.2		14.1	11.6		13.8			13.2			12.7			63
69	13.9	11.5		13.9	11.5		13.6	11.3		13.4	11		12.9	10.8		12.5			69
75	13.1	10.9		13.3	11		13.1	10.8		13	10.8		12.6	10.5		12.3	10.2		75
81	12.4	10.3	8	12.7	10.4	8.1	12.6	10.4		12.5	10.3		12.2	10.1		12	10		81
87	11.7	9.8	8	12	10	8	12	9.9	7.7	12.1	9.9		11.8	9.8		11.6	9.6		87
93	11.1	9.4	7.8	11.4	9.5	7.8	11.5	9.5	7.7	11.6	9.6	7.5	11.4	9.5	7.3	11.3	9.4		93
99	10.4	8.9	7.5	10.9	9.1	7.5	11	9.2	7.5	11.1	9.2	7.5	11	9.1	7.3	11	9.1	7	99
105	9.8	8.5	7.3	10.3	8.7	7.3	10.5	8.8	7.3	10.7	8.9	7.3	10.6	8.9	7.3	10.6	8.8	7	105
111	9.2	8.1	7.1	9.8	8.4	7.1	10	8.5	7.1	10.3	8.6	7.1	10.2	8.6	7.1	10.3	8.6	7	111
117	8.6	7.8	6.9	9.3	8.1	7	9.6	8.2	7	9.8	8.3	7	9.9	8.3	7	9.9	8.3	6.9	117
123	8.1	7.5	6.8	8.8	7.8	6.9	9.1	7.9	6.9	9.4	8	6.9	9.5	8.1	6.9	9.6	8.1	6.8	123
129	7.6	7.3	6.7	8.3	7.5	6.8	8.7	7.6	6.7	9	7.8	6.8	9.1	7.8	6.7	9.3	7.9	6.7	129
135	7.1	7	6.7	7.9	7.2	6.7	8.3	7.4	6.7	8.6	7.6	6.7	8.8	7.6	6.6	8.9	7.7	6.6	135
141	6.6	6.7		7.4	7	6.7	7.9	7.2	6.6	8.3	7.3	6.6	8.4	7.4	6.6	8.6	7.5	6.6	141
147	6.2	6.4		7	6.8	6.7	7.5	7	6.6	7.9	7.2	6.6	8.1	7.2	6.5	8.3	7.3	6.5	147
153				6.6	6.5		7.1	6.7	6.6	7.6	7	6.5	7.7	7	6.5	7.9	7.1	6.5	153
159				6.3	6.3		6.8	6.5		7.2	6.7	6.5	7.5	6.8	6.5	7.6	6.9	6.4	159
165							6.5	6.3		6.9	6.5	6.5	7.2	6.7	6.5	7.4	6.7	6.4	165
171							6.2	6.1		6.6	6.3		6.9	6.5	6.5	7.1	6.6	6.4	171
177							5.9	6		6.3	6.2		6.6	6.3	6.4	6.9	6.4	6.4	177
183										6.1	6		6.3	6.1	6.3	6.6	6.3	6.4	183
189										5.8	5.9		6	5.9		6.4	6.1	6.3	189
195													5.7	5.7		6.1	5.9	6.3	195
207													5.3			5.7	5.7		207
219																5.3			219

TAB 151291 / 151298 / 151305

STERLING CRANE

Lifting capacities on the folding jib with boom extension Forces de levage à la fléchette pliante avec télescope rallongé

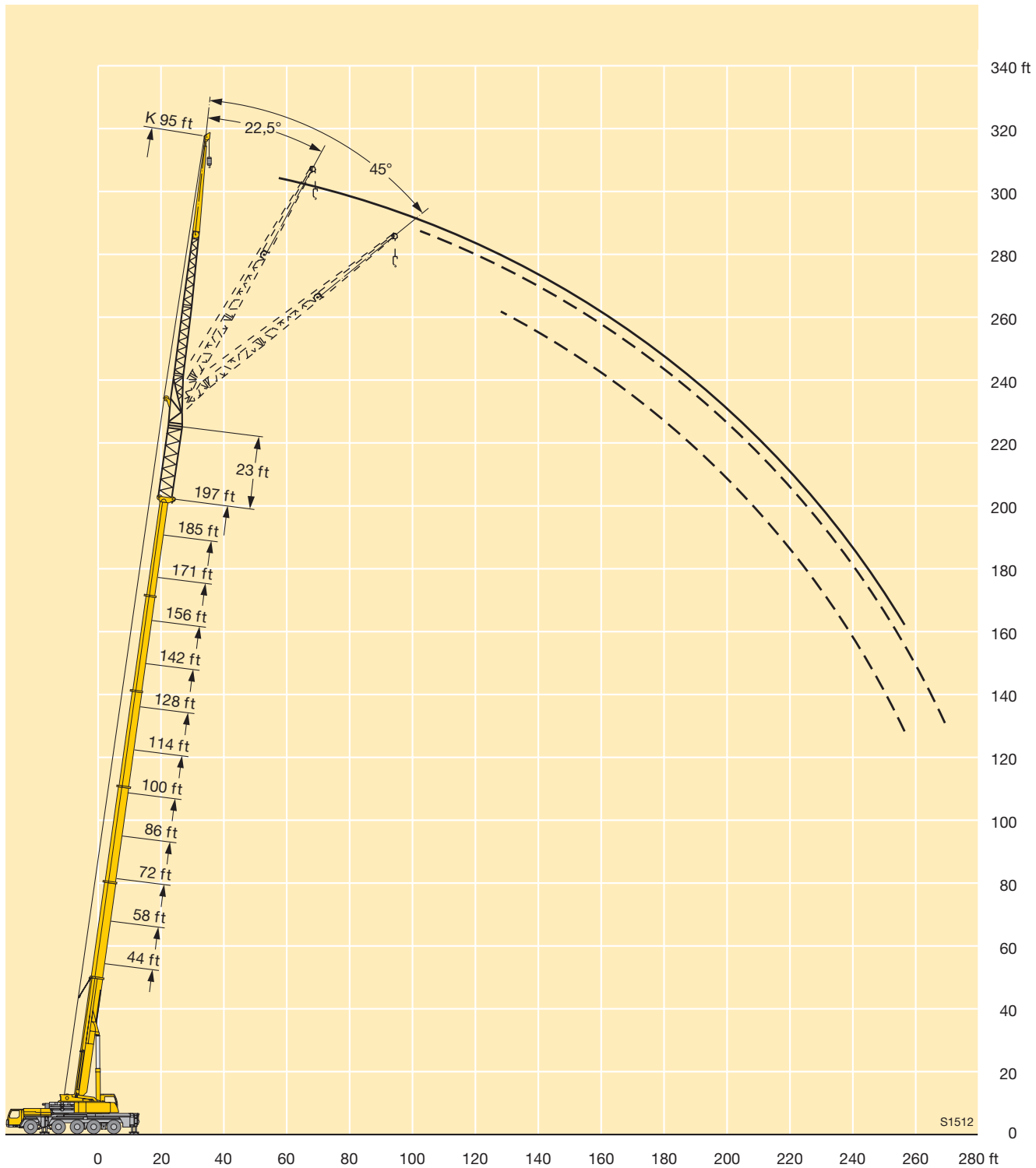


ft	128 ft + 23 ft			142 ft + 23 ft			156 ft + 23 ft			171 ft + 23 ft			185 ft + 23 ft			197 ft + 23 ft		ft
	95 ft			95 ft			95 ft			95 ft			95 ft			95 ft		
	0°	22,5°	45°	0°	22,5°	45°	0°	22,5°	45°	0°	22,5°	45°	0°	22,5°	45°	0°	22,5°	
36	12.1																	36
39	12.1			11.4														39
45	12.1			11.4			10.7											45
51	12.1			11.4			10.7		9.9			9.2						51
57	12.1			11.4			10.7		9.9			9.2			8			57
63	12			11.4			10.7		9.9			9.2			8			63
69	11.9			11.4			10.7		9.9			9.2			8			69
75	11.7	10		11.3			10.6		9.9			9.2			8			75
81	11.5	9.8		11.1	9.5		10.5		9.9			9.2			8			81
87	11.3	9.4		11	9.4		10.4		9.9	8.5		9.2			8			87
93	11	9.3		10.8	9.2		10.3	8.9	9.8	8.5		9.1	8		8			93
99	10.7	9	7.1	10.5	8.9		10.1	8.7	9.7	8.5		9.1	8		8	7.3		99
105	10.4	8.7	7.1	10.3	8.7		9.9	8.5	9.6	8.3		9	8		8	7.3		105
111	10.1	8.5	7	10	8.4	6.8	9.7	8.3	6.6	9.4	8.1	9	7.8		8	7.3		111
117	9.8	8.2	6.9	9.7	8.2	6.8	9.4	8.1	6.6	9.2	8	6.3	8.8	7.7	8	7.1		117
123	9.5	8	6.8	9.5	8	6.7	9.2	7.9	6.6	8.9	7.8	6.3	8.6	7.6		7.9	7	123
129	9.2	7.8	6.7	9.2	7.8	6.6	9	7.7	6.5	8.7	7.6	6.3	8.4	7.4	6.3	7.8	7	129
135	8.9	7.6	6.6	8.9	7.7	6.5	8.7	7.6	6.5	8.5	7.4	6.3	8.2	7.3	6.3	7.6	7	135
141	8.6	7.5	6.5	8.6	7.5	6.5	8.5	7.4	6.4	8.3	7.3	6.3	8	7.1	6.2	7.4	6.9	141
147	8.3	7.3	6.5	8.3	7.3	6.4	8.2	7.3	6.4	8.1	7.2	6.3	7.8	7	6.2	7.2	6.8	147
153	8	7.1	6.4	8	7.1	6.4	8	7.1	6.3	7.8	7	6.2	7.6	6.9	6.1	7.1	6.6	153
159	7.7	7	6.4	7.8	7	6.3	7.7	7	6.3	7.6	6.9	6.2	7.4	6.8	6.1	6.9	6.5	159
165	7.5	6.8	6.3	7.6	6.8	6.3	7.5	6.8	6.2	7.4	6.8	6.1	7.3	6.6	6.1	6.8	6.4	165
171	7.2	6.6	6.3	7.3	6.7	6.3	7.3	6.6	6.2	7.2	6.6	6.1	7.1	6.5	6	6.6	6.2	171
177	7	6.5	6.3	7.1	6.5	6.3	7.1	6.5	6.2	7	6.5	6.1	6.9	6.4	6	6.5	6.1	177
183	6.7	6.3	6.3	6.8	6.4	6.2	6.9	6.3	6.2	6.9	6.3	6.1	6.7	6.2	6	6.4	6	183
189	6.5	6.1	6.2	6.6	6.2	6.2	6.7	6.2	6.1	6.7	6.2	6	6.6	6.1	6	6.2	5.9	189
195	6.2	6	6.2	6.4	6.1	6.1	6.5	6.1	6.1	6.5	6	6	6.4	6	5.9	6.1	5.8	195
207	5.7	5.7		6	5.8	6	6	5.8	6	6.2	5.8	5.9	6.1	5.7	5.8	5.6	5.6	207
219	5.1	5.3		5.6	5.6		5.6	5.5	5.8	5.8	5.6	5.8	5.8	5.5	5.8	5.1	5.3	219
231				5.1	5.2		5.1	5.2	5.5	5.4	5.3	5.6	5.5	5.3	5.7	4.5	4.8	231
243							4.6	4.8		5	5.1	5.4	4.9	5.1	5.5	4.1	4.4	243
255							4.2	4.3		4.6	4.7		3.9	4.7	4.9	3.5	4	255
267										4.1	4.4		2.9	3.7		2.6	3.4	267
279													2.6			2.4		279

TAB 151291 / 151298 / 151305

STERLING CRANE

Lifting heights Hauteurs de levage



S1512

STERLING CRANE

Lifting capacities on the folding jib with boom extension Forces de levage à la fléchette pliante avec télescope rallongé



ft	44 ft + 23 ft			58 ft + 23 ft			72 ft + 23 ft			86 ft + 23 ft			100 ft + 23 ft			114 ft + 23 ft			ft
	118 ft			118 ft			118 ft			118 ft			118 ft			118 ft			
	0°	22,5°	45°	0°	22,5°	45°	0°	22,5°	45°	0°	22,5°	45°	0°	22,5°	45°	0°	22,5°	45°	
21	12.6																		21
24	12.6			11.9															24
27	12.6			11.9			10.9												27
30	12.6			11.9			10.9			10.4									30
33	12.6			11.9			10.9			10.4									33
36	12.6			11.9			10.9			10.4			9.7						36
39	12.6			11.9			10.9			10.4			9.7				9.2		39
45	12.3			11.8			10.9			10.4			9.7				9.2		45
51	11.9			11.5			10.8			10.4			9.7				9.2		51
57	11.4			11.1			10.6			10.3			9.7				9.2		57
63	10.8			10.7			10.3			10			9.5				9.2		63
69	10.3	8		10.2	8.1		9.9			9.7			9.3				9		69
75	9.7	7.8		9.7	7.9		9.5	7.3		9.4			9				8.8		75
81	9.2	7.4		9.3	7.4		9.1	7.2		9	7		8.7	6.8			8.5		81
87	8.6	7		8.8	7		8.7	6.9		8.6	6.9		8.4	6.8			8.3	6.3	87
93	8.1	6.6		8.3	6.7		8.3	6.6		8.3	6.6		8.1	6.5			8	6.3	93
99	7.7	6.3	4.8	7.9	6.3	4.8	7.9	6.3		7.9	6.3		7.8	6.2			7.7	6.1	99
105	7.2	5.9	4.8	7.5	6	4.8	7.5	6		7.6	6		7.5	6			7.4	5.9	105
111	6.8	5.6	4.7	7.1	5.7	4.7	7.1	5.8	4.6	7.3	5.8	4.6	7.2	5.7			7.2	5.7	111
117	6.3	5.3	4.5	6.7	5.5	4.5	6.8	5.5	4.4	6.9	5.5	4.5	6.9	5.5	4.4		6.9	5.5	117
123	6	5.1	4.4	6.3	5.2	4.4	6.5	5.2	4.4	6.6	5.3	4.4	6.6	5.3	4.3		6.6	5.3	123
129	5.6	4.9	4.3	6	5	4.3	6.2	5.1	4.3	6.3	5.1	4.3	6.3	5.1	4.3		6.4	5.1	129
135	5.3	4.7	4.2	5.7	4.8	4.2	5.9	4.9	4.2	6	4.9	4.2	6.1	4.9	4.2		6.1	5	135
141	4.9	4.5	4.1	5.3	4.6	4.1	5.6	4.7	4.1	5.8	4.8	4.1	5.9	4.8	4.1		5.9	4.8	141
147	4.6	4.4	4	5	4.5	4	5.3	4.6	4	5.5	4.6	4	5.6	4.6	4		5.7	4.7	147
153	4.4	4.2	4	4.8	4.3	4	5.1	4.4	4	5.2	4.5	4	5.4	4.5	4		5.5	4.5	153
159	4.1	4.1	4	4.5	4.2	4	4.8	4.3	3.9	5	4.4	3.9	5.1	4.4	3.9		5.3	4.4	159
165	3.9	4		4.3	4.1	4	4.6	4.2	3.9	4.8	4.3	3.9	5	4.3	3.9		5.1	4.3	165
171	3.7			4.1	4		4.4	4.1	3.9	4.6	4.1	3.9	4.8	4.2	3.8		4.9	4.2	171
177	3.5			3.8	4		4.2	4	3.9	4.4	4.1	3.9	4.6	4.1	3.8		4.7	4.2	177
183				3.7	4		4	3.9	3.9	4.3	4	3.9	4.5	4	3.8		4.6	4.1	183
189				3.6			3.8	3.9		4.1	3.9	3.9	4.3	3.9	3.8		4.4	4	189
195							3.7	3.9		4	3.9	3.9	4.2	3.9	3.8		4.3	3.9	195
207										3.7	3.9		3.9	3.8			4.1	3.8	207
219													3.6	3.8			3.8	3.8	219
231																	3.6	3.7	231

TAB 151291 / 151298 / 151305

STERLING CRANE

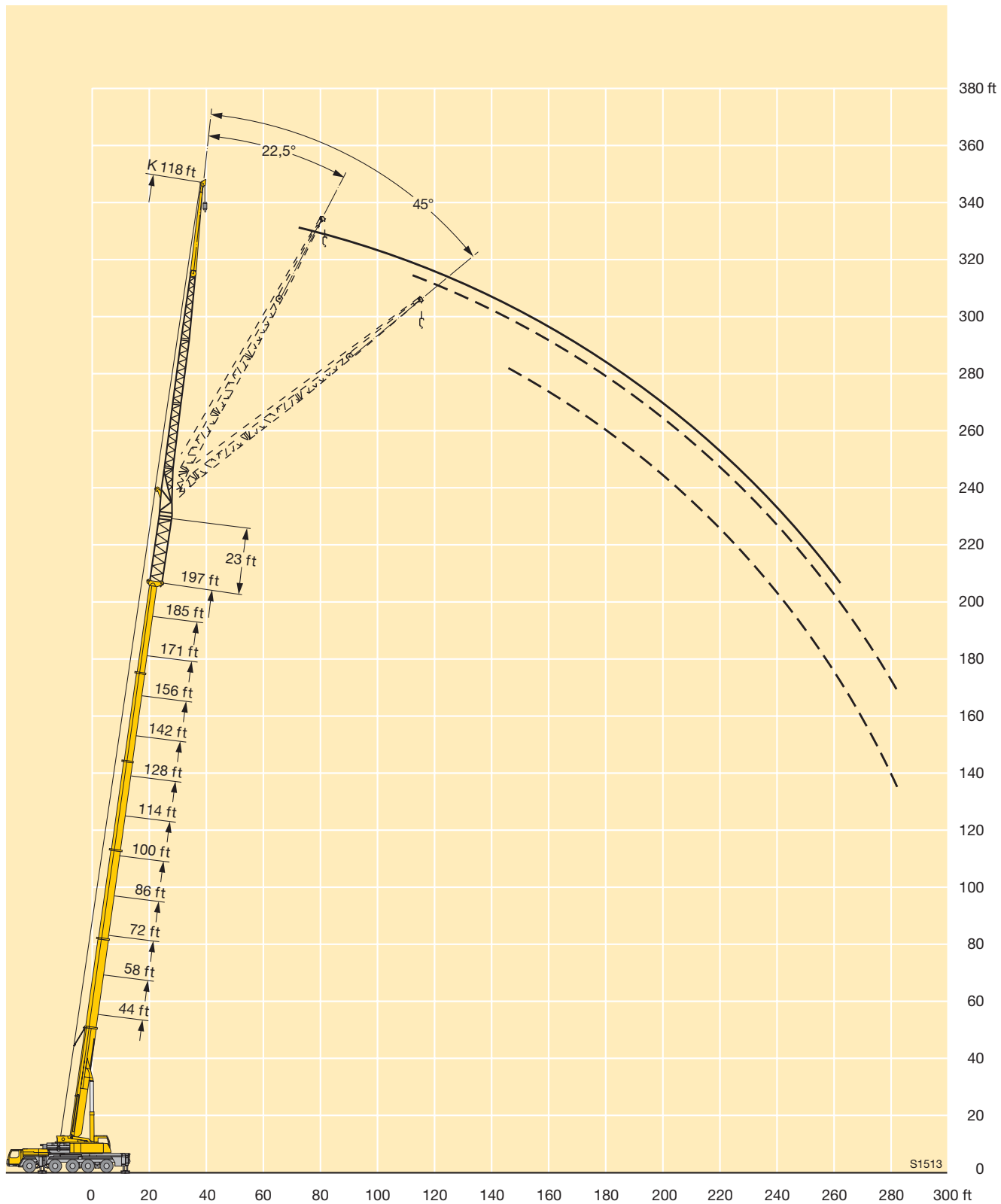
Lifting capacities on the folding jib with boom extension Forces de levage à la fléchette pliante avec télescope rallongé

		44 - 197 ft			23 ft			118 ft			360°			163100 lbs			85%		
		128 ft + 23 ft			142 ft + 23 ft			156 ft + 23 ft			171 ft + 23 ft			185 ft + 23 ft			197 ft + 23 ft		
		118 ft			118 ft			118 ft			118 ft			118 ft			118 ft		
		0°	22,5°	45°	0°	22,5°	45°	0°	22,5°	45°	0°	22,5°	45°	0°	22,5°	45°	0°		
45	ft	8.5			8														
51		8.5			8			7.5						6.8					
57		8.5			8			7.5						6.8			6.1		
63		8.5			8			7.5						6.8			6.1		
69		8.5			8			7.5						6.8			6.1	4.9	
75		8.3			8			7.5						6.8			6.1	4.9	
81		8.1			7.9			7.4						6.8			6.1	4.9	
87		7.9	6.3		7.7			7.3						6.8			6.1	4.9	
93		7.7	6.3		7.5	5.8		7.2						6.8			6.1	4.9	
99		7.5	6		7.3	5.8		7	5.6					6.6	5.1		6.1	4.9	
105		7.2	5.8		7.1	5.6		6.9	5.6					6.5	5.1		6	4.9	
111		7	5.6		6.9	5.5		6.7	5.4					6.4	5.1		6	4.9	
117		6.8	5.4		6.7	5.4		6.5	5.3					6.3	5.1		5.9	4.9	
123		6.5	5.2	4.1	6.5	5.2		6.3	5.1					6.1	5		5.8	4.9	
129		6.3	5.1	4.1	6.3	5.1	4.1	6.1	5	3.9				6	4.9		5.7	4.8	
135		6.1	4.9	4.1	6.1	4.9	4.1	6	4.9	3.9				5.8	4.8	3.6	5.5	4.7	
141		5.9	4.8	4.1	5.9	4.8	4	5.8	4.7	3.9				5.7	4.7	3.6	5.4	4.6	
147		5.7	4.7	4	5.7	4.7	3.9	5.6	4.6	3.9				5.5	4.6	3.6	5.3	4.5	
153		5.5	4.5	3.9	5.5	4.5	3.9	5.4	4.5	3.9				5.3	4.5	3.6	5.1	4.4	
159		5.3	4.4	3.9	5.3	4.4	3.9	5.3	4.4	3.8				5.2	4.4	3.6	5	4.3	
165		5.1	4.3	3.8	5.1	4.3	3.8	5.1	4.3	3.8				5.1	4.3	3.6	4.9	4.2	
171		5	4.3	3.8	5	4.3	3.8	4.9	4.2	3.7				4.9	4.2	3.6	4.8	4.1	
177		4.8	4.1	3.8	4.9	4.2	3.7	4.8	4.1	3.7				4.8	4.1	3.6	4.7	4.1	
183		4.6	4.1	3.7	4.7	4.1	3.7	4.7	4.1	3.7				4.6	4	3.6	4.6	4	
189		4.5	4	3.7	4.6	4	3.7	4.6	4	3.6				4.5	3.9	3.6	4.5	3.9	
195		4.4	3.9	3.7	4.4	3.9	3.7	4.5	3.9	3.6				4.4	3.9	3.6	4.4	3.8	
207		4.2	3.8	3.7	4.2	3.8	3.7	4.2	3.8	3.6				4.2	3.8	3.6	4.2	3.7	
219		3.9	3.7	3.7	4	3.7	3.7	4	3.7	3.6				4	3.7	3.6	4	3.6	
231		3.7	3.7		3.8	3.7	3.7	3.8	3.6	3.6				3.9	3.6	3.6	3.8	3.5	
243		3.5	3.6		3.6	3.6		3.7	3.6	3.6				3.7	3.5	3.6	3.7	3.5	
255					3.5	3.6		3.4	3.5	3.6				3.5	3.5	3.6	3.5	3.4	
267					3.3			3.1	3.3					3.4	3.4	3.6	2.9	3.4	
279								2.8						3.1	3.2		3	3.2	

TAB 151291 / 151298 / 151305

STERLING CRANE

Lifting heights Hauteurs de levage



STERLING CRANE

Lifting capacities on the hydraulically variable folding jib with boom extension

Capacités de levage à la fléchette pliante à variation hydraulique avec télescope rallongé

		44 - 197 ft			23 ft			40 ft			360°			163100 lbs			85%			
		44 ft + 23 ft			58 ft + 23 ft			72 ft + 23 ft			86 ft + 23 ft			100 ft + 23 ft			114 ft + 23 ft			
		40 ft			40 ft			40 ft			40 ft			40 ft			40 ft			
		0°	22,5°	45°	0°	22,5°	45°	0°	22,5°	45°	0°	22,5°	45°	0°	22,5°	45°	0°	22,5°	45°	
10	46.3																			
12	46.3				46.3															
14	46.3				46.3															
16	46.3				46.3			46.3												
18	46.3				46.3			46.3			46.3									
21	46.3				46.3			46.3			46.3			41.6						
24	46.3	41.8			46.3			46.3			46.2			41.5			38.2			
27	46.3	41.3			46.3	40.2		46.3			45.6			41.2			38.1			
30	46.1	39			46.2	39.9		46	37.5		44.3			40.7			37.9			
33	45	37			45.6	38		44	37.4		42.9			39.7			37.6			
36	42.1	35.2	25.7		43.5	36.3		42.1	35.9		41.5	35.3		38.8			36.9			
39	39.8	33.6	25.7		41.3	34.8	25.7	40.3	34.5		39.9	34.1		37.8	32.7		36.2			
45	35.6	30.9	25.7		37.3	32.1	25.7	37	32.1	25.7	37	32	25.7	35.6	31		34.6	30.1		
51	32.1	28.6	24.8	34	29.9	25.2	33.7	29.9	25.4	34.5	30.1	25.6	33.2	29.3	25.6		32.8	28.9		
57	29.1	26.5	23.8	31	27.8	24.4	30.9	27.7	24.6	32.1	28.2	25	30.8	27.8	25		30.9	27.5	24.4	
63	26.4	24.6	23	28.6	26	23.5	28.2	25.6	23.7	29.8	26.5	24.2	28.3	26.3	24.1		28.9	26.3	23.8	
69	24.2	22.7	22	26.4	24.2	22.8	25.8	23.8	22.7	27.6	24.7	23.2	26.1	24.7	23.1		26.9	25	23	
75	22.3	21	21	24.4	22.6	21.9	23.8	22.1	21.5	25.6	23.2	22.1	24.2	23.1	22.1		25.1	23.7	22.1	
81	20.4	19.5	19.9	22.7	21.2	21	22	20.7	20.3	23.8	21.8	21	22.4	21.6	21.1		23.4	22.3	21.3	
87	18.8	18.2	18.5	21.1	19.9	20	20.3	19.4	19.2	22.3	20.6	20	20.8	20.2	20		20.9	20.3		
93	17.3			19.7	18.7	19	19	18.2	18.2	20.8	19.5	19.1	19.5	18.9	18.9		20.6	19.8	19.4	
99				18.4	17.7		17.7	17.2	17.3	19.5	18.5	18.2	18.3	17.8	17.8		19.4	18.7	18.4	
105				17.1	16.7		16.5	16.2	16.4	18.4	17.6	17.4	17	16.8	16.8		18.3	17.6	17.5	
111				16.1	16.1		15.5	15.3	15.6	17.3	16.8	16.8	16.1	15.8	15.9		17.3	16.8	16.6	
117							14.6	14.5		16.4	16	16.1	15.2	14.9	15		16.3	15.9	15.9	
123							13.8	13.8		15.6	15.3		14.3	14.1	14.3		15.5	15.1	15.1	
129										14.8	14.6		13.5	13.4	13.5		14.7	14.4	14.5	
135										14.1	14.1		12.8	12.7			14	13.8	13.8	
141													12.2	12.1			13.3	13.1	13.3	
147													11.5	11.6			12.7	12.6		
153																	12.2	12.1		
159																	11.6	11.6		

TAB 151333 / 151340 / 151347

STERLING CRANE

Lifting capacities on the hydraulically variable folding jib with boom extension

Capacités de levage à la fléchette pliante à variation hydraulique avec télescope rallongé

		44 - 197 ft			23 ft			40 ft			360°			163100 lbs			85%			
		128 ft + 23 ft			142 ft + 23 ft			156 ft + 23 ft			171 ft + 23 ft			185 ft + 23 ft			197 ft + 23 ft			
		40 ft			40 ft			40 ft			40 ft			40 ft			40 ft			
		0°	22,5°	45°	0°	22,5°	45°	0°	22,5°	45°	0°	22,5°	45°	0°	22,5°	45°	0°	22,5°	45°	
27	34.2																			
30	34.2				31.7															
33	34				31.7															
36	33.8				31.6			27.7												
39	33.4				31.4			27.7			25.5									
45	32.4				30.8			27.7			25.5			21.3					18.7	
51	31.1	27.5			30.1	26.9		27.7			25.5			21.3					18.7	
57	29.7	26.7	23.5		29.1	26.1		27.3	24		25.3	22.6		21.3					18.7	
63	28.3	25.6	23.1		27.8	25.2	22.4	26.6	23.5	21.1	25.1	22.4		21.3	20.6				18.7	
69	26.7	24.5	22.4		26.6	24.2	22	25.6	22.8	21	24.7	22	19.4	21.2	20.5	18.2			18.7	18.7
75	25.1	23.4	21.7		25.2	23.3	21.4	24.6	22.1	20.5	23.8	21.4	19.3	20.8	20.3	18			18.6	18.5
81	23.5	22.3	21		23.9	22.3	20.8	23.5	21.3	19.9	23	20.8	18.9	20.2	20	17.6			18.3	18.1
87	22	21.1	20.2		22.5	21.3	20.1	22.4	20.5	19.2	22.2	20.1	18.4	19.8	19.5	17.3			17.8	17.6
93	20.7	20	19.3		21.2	20.3	19.3	21.3	19.7	18.6	21.3	19.5	17.8	19.3	18.9	16.9			17.3	17
99	19.4	18.9	18.4		20.1	19.3	18.6	20.1	18.9	18	20.3	18.8	17.3	18.7	18.3	16.4			16.8	16.4
105	18.1	17.9	17.7		19	18.4	17.8	19.2	18.1	17.5	19.3	18.1	16.8	18.1	17.7	16			16.2	15.8
111	17.2	17	16.9		17.9	17.5	17.1	18.2	17.4	16.9	18.4	17.4	16.4	17.5	17.1	15.6			15.6	15.2
117	16.2	16.1	16.1		17	16.7	16.4	17.3	16.6	16.4	17.6	16.7	15.9	16.9	16.5	15.2			15	14.7
123	15.3	15.2	15.3		16.1	15.9	15.8	16.4	15.9	15.8	16.8	16.1	15.5	16.3	15.9	14.8			14.4	14.1
129	14.4	14.4	14.6		15.3	15.1	15.1	15.6	15.3	15.2	16	15.5	15	15.7	15.3	14.5			13.8	13.6
135	13.6	13.6	13.8		14.5	14.4	14.4	14.8	14.6	14.6	15.3	14.8	14.6	15.1	14.8	14.1			13.2	13
141	12.9	12.9	13.1		13.8	13.7	13.8	14	13.9	14	14.6	14.2	14.1	14.4	14.3	13.8			12.6	12.5
147	12.2	12.3	12.4		13.1	13.1	13.2	13.2	13.3	13.3	13.4	13.9	13.6	13.7	13.9	13.7			13.5	12
153	11.5	11.6	11.8		12.5	12.5	12.6	12.5	12.6	12.8	13.2	13.1	13.2	13.3	13.2	13.1			11.4	11.5
159	11	11			11.9	11.9	12	11.9	12	12.2	12.5	12.5	12.6	12.7	12.7	12.8			10.9	11
165	10.4	10.5			11.3	11.4	11.5	11.3	11.4	11.6	11.9	12	12.1	12.2	12.2	12.3			10.4	10.5
171	9.9	10			10.9	10.8		10.7	10.9	11	11.4	11.4	11.6	11.7	11.7	11.8			9.9	10.1
177	9.4	9.5			10.4	10.4		10.1	10.3	10.4	10.9	11	11.1	11.1	11.2	11.4			9.4	9.6
183	6.6				9.9	10		9.5	9.7	9.8	10.3	10.5	10.6	10.7	10.8	10.9			9	9.2
189					9.5	9.6		9	9.2		9.8	10	10.1	9.8	10.3	10.5			8.5	8.7
195					7			8.6	8.7		9.4	9.5	9.6	8.9	9.5	9.7			8.1	8.3
207											8.5	8.7		7.3	7.8	7.9			7.1	7.5
219														6	6.3				5.7	6.1
231																			4.4	4.8

TAB 151333 / 151340 / 151347

STERLING CRANE

Lifting capacities on the hydraulically variable folding jib with boom extension

Capacités de levage à la fléchette pliante à variation hydraulique avec télescope rallongé

		44 - 197 ft			23 ft			63 ft			360°			163100 lbs			85%			
		44 ft + 23 ft			58 ft + 23 ft			72 ft + 23 ft			86 ft + 23 ft			100 ft + 23 ft			114 ft + 23 ft			
		63 ft			63 ft			63 ft			63 ft			63 ft			63 ft			
		0°	22,5°	45°	0°	22,5°	45°	0°	22,5°	45°	0°	22,5°	45°	0°	22,5°	45°	0°	22,5°	45°	
14	41																			
16	41																			
18	40.6				37.1															
21	40				36.9			32.7			30.3									
24	39.4				36.5			32.7			30.2									
27	38.2				36			32.4			30.1			27.2			24			
30	36.4				35.3			31.9			30			27.1			24			
33	34.6				34.1			31.5			29.6			27			23.8			
36	33				32.7			30.9			29.2			26.8			23.8			
39	31.5	26			31.4			30			28.8			26.4			23.8			
45	28.6	24.3			29	24.6		28	23.7		27.4			25.8			23.5			
51	26	22.6			26.7	23.2		26.2	22.5		25.9	21.6		24.6	20.9		23.1			
57	23.7	21	17.9		24.6	21.6	17.9	24.5	21.1		24.4	20.8		23.5	20.2		22.4	19.5		
63	21.7	19.4	17.5		22.7	20.2	17.5	22.8	19.9	16.7	23	19.8	17	22.3	19.3		21.6	18.8		
69	19.8	17.9	16.8		20.9	18.9	16.9	21.3	18.9	16.6	21.6	18.8	16.7	21.2	18.4	16.2	20.8	18.1		
75	18.1	16.6	16		19.3	17.8	16.3	19.8	17.9	16.2	20.3	17.9	16.2	20	17.6	15.9	19.9	17.4	15.3	
81	16.6	15.4	15.2		18	16.8	15.6	18.5	16.9	15.5	19.1	17.1	15.6	18.9	16.8	15.3	19	16.8	15.1	
87	15.4	14.3	14.4		16.6	15.8	14.8	17.3	16	14.9	17.9	16.3	15	17.9	16.1	14.8	18.2	16.1	14.7	
93	14.2	13.4	13.6		15.5	14.9	14.1	16.1	15.1	14.2	16.8	15.5	14.4	16.9	15.4	14.3	17.3	15.5	14.2	
99	13.1	12.6	12.8		14.5	14	13.4	15	14.3	13.6	15.9	14.8	13.8	15.9	14.8	13.8	16.5	14.9	13.7	
105	12.2	11.8	12.2		13.5	13.2	12.8	14.1	13.5	13	15.1	14.1	13.3	15	14.2	13.3	15.6	14.3	13.3	
111	11.4	11.1	11.7		12.6	12.5	12.3	13.3	12.8	12.4	14.2	13.5	12.8	14.1	13.6	12.9	14.8	13.8	12.9	
117	10.6	10.5			11.9	11.9	11.9	12.5	12.2	11.9	13.5	12.9	12.4	13.2	13	12.5	14.1	13.3	12.6	
123					11.2	11.3		11.8	11.5	11.4	12.9	12.3	12	12.4	12.3	12.1	13.4	12.8	12.2	
129					10.5	10.8		11.2	11	11	12.2	11.8	11.6	11.7	11.7	11.6	12.7	12.2	11.9	
135								10.6	10.5		11.6	11.3	11.2	11.1	11.1	11.1	12	11.7	11.5	
141								10	10		11.1	10.8	10.9	10.5	10.5	10.6	11.4	11.1	11.1	
147											10.6	10.4		9.9	10	10.1	10.9	10.7	10.7	
153											10.1	10.1		9.4	9.5		10.4	10.2	10.3	
159											9.8			8.9	9		9.8	9.7	9.9	
165														8.5	8.6		9.4	9.3		
171														8.1			9	8.9		
177														7.8			8.6	8.6		
183																	8.2	8.2		
189																	8			

TAB 151333 / 151340 / 151347

STERLING CRANE

Lifting capacities on the hydraulically variable folding jib with boom extension

Capacités de levage à la fléchette pliante à variation hydraulique avec télescope rallongé

		44 - 197 ft			23 ft			63 ft			360°			163100 lbs			85%					
		128 ft + 23 ft			142 ft + 23 ft			156 ft + 23 ft			171 ft + 23 ft			185 ft + 23 ft			197 ft + 23 ft					
		63 ft			63 ft			63 ft			63 ft			63 ft			63 ft					
		0°	22,5°	45°	0°	22,5°	45°	0°	22,5°	45°	0°	22,5°	45°	0°	22,5°	45°	0°	22,5°	45°			
30	21.6																				30	
33	21.6																					33
36	21.6				20.1																	36
39	21.6				20.1			18.4														39
45	21.6				20.1			18.4			17			15.5								45
51	21.4				20.1			18.4			17			15.5			13.6					51
57	21				20			18.4			17			15.5			13.6					57
63	20.4	18			19.6	17.5		18.4			17			15.5			13.6					63
69	19.8	17.6			19.1	17.1		18.2	16.3		16.8	15.3		15.4			13.6					69
75	19.2	16.9	14.8		18.6	16.5		17.8	16.1		16.6	15.2		15.3	14.1		13.6					75
81	18.5	16.3	14.6		18.1	16.1	14.1	17.3	15.6	13.6	16.4	15		15.2	14		13.6	12.6				81
87	17.8	15.8	14.2		17.5	15.6	14	16.9	15.1	13.5	16.1	14.7	12.9	15	13.8		13.4	12.6				87
93	17.2	15.2	13.8		16.9	15	13.8	16.4	14.7	13.3	15.8	14.3	12.8	14.7	13.6	12.1	13.3	12.3	10.9			93
99	16.5	14.7	13.6		16.3	14.5	13.4	15.9	14.2	13.2	15.3	13.9	12.6	14.5	13.4	12.1	13.1	12.1	10.9			99
105	15.7	14.2	13.2		15.7	14.1	13.1	15.3	13.8	12.8	14.9	13.5	12.4	14.2	13	11.9	12.9	12.1	10.9			105
111	15	13.6	12.8		15.1	13.6	12.7	14.9	13.4	12.5	14.5	13.1	12.3	13.9	12.7	11.9	12.6	11.9	10.9			111
117	14.3	13.2	12.5		14.5	13.2	12.4	14.3	13	12.2	14.1	12.8	12.1	13.5	12.4	11.7	12.2	11.7	10.7			117
123	13.6	12.8	12.2		13.9	12.8	12.1	13.8	12.7	12	13.6	12.5	11.8	13.2	12.1	11.5	11.8	11.4	10.5			123
129	12.9	12.3	11.9		13.3	12.4	11.9	13.3	12.3	11.7	13.2	12.1	11.6	12.8	11.8	11.3	11.5	11.2	10.4			129
135	12.2	11.9	11.6		12.7	12	11.6	12.7	11.9	11.5	12.7	11.8	11.4	12.5	11.5	11.1	11.1	10.8	10.2			135
141	11.5	11.4	11.3		12.1	11.6	11.3	12.2	11.6	11.3	12.3	11.5	11.2	12.1	11.3	10.9	10.7	10.5	10			141
147	10.9	10.9	10.9		11.5	11.2	11.1	11.7	11.2	11	11.8	11.2	10.9	11.7	11	10.7	10.3	10.1	9.8			147
153	10.3	10.4	10.5		10.9	10.8	10.8	11.2	10.9	10.8	11.4	10.9	10.7	11.3	10.8	10.5	9.9	9.8	9.6			153
159	9.8	9.9	10.1		10.4	10.3	10.4	10.6	10.5	10.5	10.9	10.6	10.5	10.9	10.5	10.3	9.5	9.4	9.4			159
165	9.3	9.4	9.6		9.9	9.9	10	10.1	10.1	10.2	10.4	10.3	10.3	10.5	10.2	10.1	9.1	9.1	9.2			165
171	8.8	8.9	9.1		9.5	9.5	9.7	9.6	9.7	9.8	10	9.9	10	10.1	9.9	9.8	8.7	8.8	8.9			171
177	8.3	8.5	8.6		9	9.1	9.2	9.2	9.3	9.5	9.6	9.7	9.7	9.7	9.6	9.6	8.3	8.4	8.6			177
183	7.9	8			8.6	8.7	8.8	8.7	8.9	9.1	9.1	9.2	9.4	9.3	9.3	9.4	7.9	8.1	8.3			183
189	7.5	7.6			8.2	8.3	8.4	8.3	8.4	8.6	8.7	8.9	9.1	8.9	9	9.1	7.5	7.7	8			189
195	7.1	7.2			7.8	7.9		7.8	8	8.2	8.4	8.5	8.7	8.6	8.6	8.8	7.1	7.4	7.6			195
207					7.2	7.2		7	7.2	7.2	7.5	7.7	7.9	7.6	8	8.2	6.4	6.6	6.9			207
219								6.2	6.4		6.9	7	7.1	6.2	7	7.2	5.7	6	6.1			219
231											6.2	6.3		5.1	5.6		4.8	5.3	5.4			231
243														3.9	4.4		3.6	4.2				243
255																	2.5	3				255

TAB 151333 / 151340 / 151347

STERLING CRANE

Lifting capacities on the hydraulically variable folding jib with boom extension

Capacités de levage à la fléchette pliante à variation hydraulique avec télescope rallongé

		44 - 197 ft			23 ft			72 ft			360°			163100 lbs			85%			
		44 ft + 23 ft			58 ft + 23 ft			72 ft + 23 ft			86 ft + 23 ft			100 ft + 23 ft			114 ft + 23 ft			
		72 ft			72 ft			72 ft			72 ft			72 ft			72 ft			
		0°	22,5°	45°	0°	22,5°	45°	0°	22,5°	45°	0°	22,5°	45°	0°	22,5°	45°	0°	22,5°	45°	
14	23.3																			
16	23.3																			
18	23.3				22.1			20.6												
21	23.3				22.1			20.6			19.6									
24	23.2				22.1			20.6			19.6			18.4						
27	23				22.1			20.6			19.6			18.4			17.7			
30	22.7				22			20.6			19.6			18.4			17.7			
33	22.4				21.8			20.6			19.6			18.4			17.7			
36	22				21.5			20.6			19.6			18.4			17.7			
39	21.7				21.2			20.4			19.6			18.4			17.7			
45	20.8	18.1			20.6	18		19.9			19.4			18.2			17.6			
51	20	17.4			19.9	17.4		19.3	16.8		19			18			17.4			
57	19.2	16.6			19.2	16.6		18.8	16.4		18.5	16.1		17.7	15.7		17.2			
63	18.3	15.9	13.1		18.5	15.9	13.1	18.2	15.8		18	15.7		17.3	15.4		16.9	15		
69	17.5	15.2	12.8		17.8	15.3	12.8	17.6	15.2	12.6	17.5	15.2		16.9	15		16.5	14.8		
75	16.5	14.5	12.5		17.1	14.7	12.5	17	14.7	12.4	16.9	14.7	12.3	16.4	14.5	12.2	16.1	14.4		
81	15.6	13.9	12.2		16.2	14.2	12.2	16.4	14.2	12.1	16.4	14.3	12.2	16	14.1	12.1	15.7	14	11.9	
87	14.7	13.4	11.9		15.4	13.7	12	15.7	13.8	12	15.8	13.9	11.9	15.5	13.8	11.9	15.3	13.7	11.8	
93	13.8	12.8	11.7		14.6	13.2	11.8	14.9	13.3	11.8	15.1	13.5	11.8	14.9	13.4	11.7	14.9	13.4	11.6	
99	12.8	12.2	11.5		13.7	12.7	11.6	14.2	12.8	11.6	14.5	13	11.6	14.4	13	11.5	14.4	13	11.5	
105	11.9	11.5	11.2		12.9	12.1	11.4	13.4	12.4	11.4	13.9	12.6	11.5	13.8	12.6	11.4	13.9	12.6	11.4	
111	11.2	10.8	10.8		12.2	11.5	11.1	12.7	11.9	11.3	13.2	12.1	11.3	13.2	12.2	11.3	13.4	12.2	11.2	
117	10.5	10.3	10.4		11.5	11	10.8	12.1	11.3	11	12.6	11.7	11.1	12.7	11.7	11.2	12.9	11.8	11.1	
123	9.8	9.7			10.8	10.4	10.5	11.4	10.8	10.6	12	11.2	10.8	12	11.3	10.9	12.4	11.4	10.9	
129	9.2				10.2	10	10.2	10.8	10.4	10.3	11.5	10.8	10.6	11.4	10.9	10.6	11.9	11.1	10.6	
135					9.7	9.6		10.3	9.9	10	11	10.4	10.3	10.9	10.5	10.3	11.4	10.7	10.4	
141					9.2			9.8	9.5		10.5	10	10	10.3	10.1	10.1	10.9	10.4	10.1	
147								9.3	9.1		10.1	9.7	9.8	9.8	9.7	9.8	10.4	10.1	10	
153								8.8			9.7	9.4		9.3	9.2	9.4	10	9.7	9.7	
159											9.3	9.1		8.8	8.8	8.9	9.5	9.4	9.5	
165											8.9			8.4	8.4		9.1	9	9.1	
171														7.9	8		8.7	8.6	8.8	
177														7.5	7.6		8.3	8.3	8.5	
183														7.2	7.3		7.9	8		
189																	7.6	7.6		
195																	7.3	7.5		

TAB 151333 / 151340 / 151347

STERLING CRANE

Lifting capacities on the hydraulically variable folding jib with boom extension

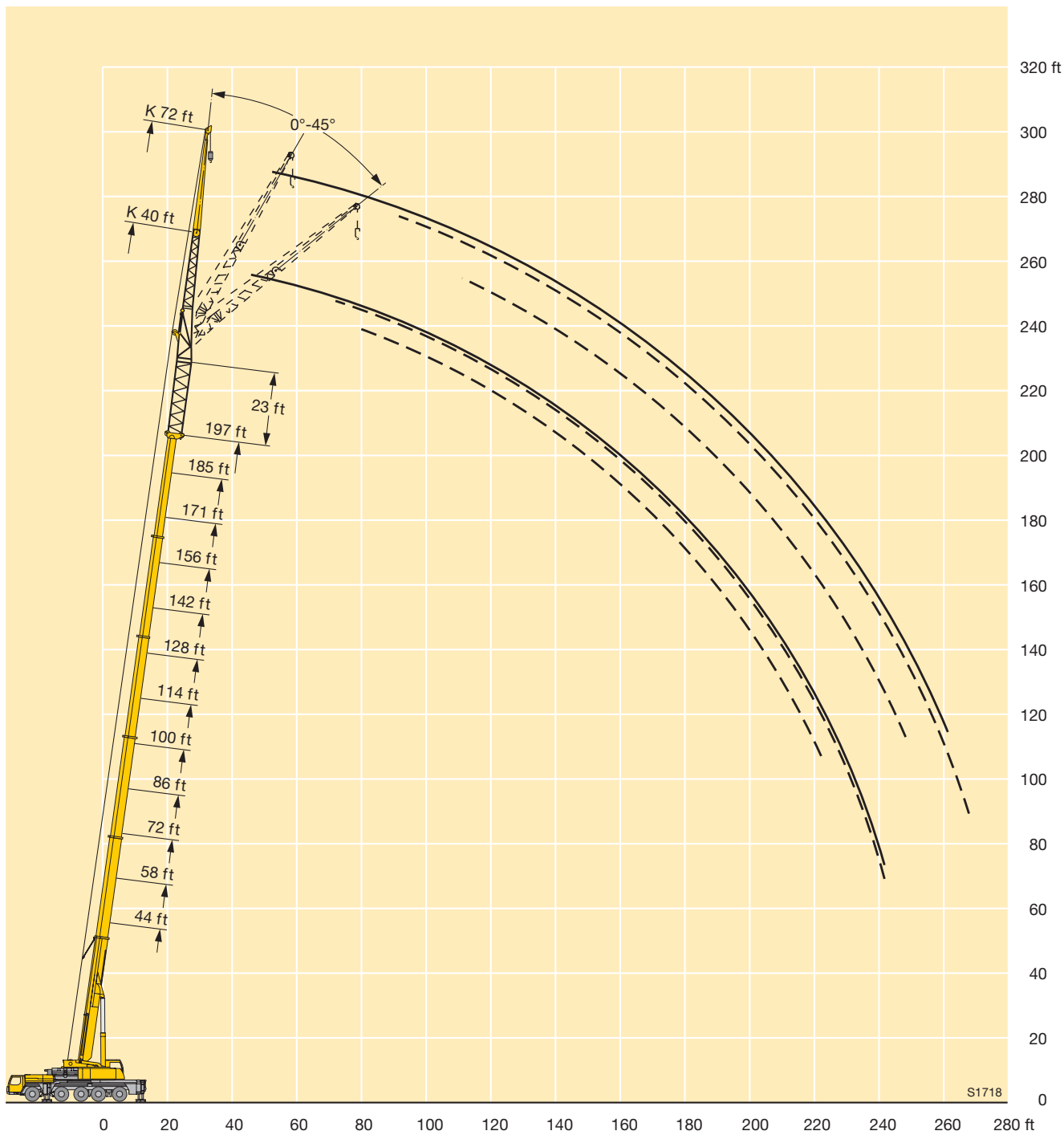
Capacités de levage à la flèche pliante à variation hydraulique avec télescope rallongé

		44 - 197 ft			23 ft			72 ft			360°			163100 lbs			85%			
		128 ft + 23 ft			142 ft + 23 ft			156 ft + 23 ft			171 ft + 23 ft			185 ft + 23 ft			197 ft + 23 ft			
		72 ft			72 ft			72 ft			72 ft			72 ft			72 ft			
		0°	22,5°	45°	0°	22,5°	45°	0°	22,5°	45°	0°	22,5°	45°	0°	22,5°	45°	0°	22,5°	45°	
30	16.3																			
33	16.3																			
36	16.3				15.8															
39	16.3				15.8			14.8												
45	16.3				15.8			14.8			13.6									
51	16.3				15.6			14.8			13.6			12.6					11.2	
57	16.2				15.5			14.8			13.6			12.6					11.2	
63	16	14.6			15.4			14.7			13.6			12.6					11.2	
69	15.8	14.5			15.2	14		14.5			13.6			12.6					11.2	
75	15.5	14.1			15	13.9		14.3	13.1		13.5	12.6		12.6					11.2	
81	15.1	13.8	11.6		14.7	13.6		14.1	13.1		13.4	12.6		12.6	11.9				11.2	
87	14.8	13.5	11.6		14.4	13.3	11.4	13.9	13		13.3	12.6		12.4	11.9				11.2	10.7
93	14.4	13.2	11.6		14.1	13	11.4	13.6	12.8	11.2	13.1	12.3	10.9	12.3	11.9				11.2	10.7
99	14.1	12.9	11.4		13.8	12.7	11.3	13.3	12.5	11.2	12.9	12.2	10.9	12.2	11.7	10.4			11.1	10.7
105	13.7	12.5	11.3		13.5	12.4	11.2	13.1	12.2	11.1	12.6	11.9	10.9	12	11.4	10.4	11		10.7	
111	13.2	12.1	11.2		13.2	12	11.1	12.8	11.8	10.9	12.4	11.6	10.8	11.8	11.2	10.4	10.9	10.5	10.5	9.7
117	12.8	11.7	11		12.8	11.7	11	12.5	11.5	10.8	12.1	11.3	10.6	11.6	10.9	10.4	10.8	10.3	9.7	11.7
123	12.4	11.4	10.8		12.4	11.3	10.8	12.2	11.2	10.6	11.9	11	10.4	11.4	10.7	10.2	10.6	10.1	9.6	12.3
129	12	11	10.6		12	11	10.5	11.8	10.9	10.4	11.6	10.8	10.2	11.2	10.4	10	10.3	9.9	9.5	12.9
135	11.5	10.7	10.4		11.6	10.7	10.3	11.5	10.6	10.2	11.3	10.5	10.1	11	10.2	9.8	10.1	9.7	9.4	13.5
141	11	10.4	10.1		11.2	10.4	10.1	11.2	10.3	10	11.1	10.2	9.9	10.7	10	9.7	9.9	9.5	9.3	14.1
147	10.5	10.1	9.9		10.8	10.2	9.9	10.8	10.1	9.8	10.8	10	9.7	10.5	9.8	9.5	9.7	9.3	9.1	14.7
153	10	9.8	9.7		10.4	9.9	9.8	10.5	9.9	9.7	10.5	9.8	9.6	10.3	9.6	9.4	9.4	9.1	9	15.3
159	9.6	9.5	9.5		10	9.6	9.6	10.1	9.6	9.5	10.2	9.6	9.4	10	9.4	9.3	9	8.9	8.8	15.9
165	9.1	9.1	9.3		9.6	9.3	9.4	9.7	9.4	9.4	9.8	9.4	9.3	9.8	9.2	9.1	8.7	8.7	8.7	16.5
171	8.6	8.8	8.9		9.2	9	9.2	9.3	9.1	9.2	9.5	9.1	9.2	9.5	9	9	8.4	8.4	8.5	17.1
177	8.2	8.3	8.5		8.8	8.8	9	8.9	8.8	9	9.2	8.9	9	9.2	8.8	8.9	8	8.1	8.3	17.7
183	7.8	7.9	8.1		8.4	8.4	8.6	8.5	8.6	8.7	8.8	8.7	8.8	8.9	8.7	8.8	7.7	7.8	8	18.3
189	7.4	7.5			8	8.1	8.3	8.1	8.3	8.5	8.5	8.4	8.6	8.6	8.5	8.7	7.3	7.5	7.7	18.9
195	7	7.2			7.6	7.7	7.9	7.7	7.9	8.1	8.1	8.2	8.4	8.3	8.2	8.5	7	7.2	7.5	19.5
207	6.3	6.4			7	7.1		6.9	7.2	7.3	7.4	7.6	7.8	7.6	7.7	8	6.3	6.6	6.8	20.7
219					6.4			6.2	6.4		6.7	6.9	7.1	6.6	7.2	7.4	5.7	5.9	6.1	21.9
231								5.5			6.1	6.3		5.4	6.1	6.3	5	5.3	5.5	23.1
243											5.5			4.3	5		4	4.7	4.8	24.3
255														3.3	3.7		2.9	3.5		25.5
267																		2.4		26.7

TAB 151333 / 151340 / 151347

STERLING CRANE

Lifting heights Hauteurs de levage



STERLING CRANE

Lifting capacities on the hydraulically variable folding jib with boom extension

Capacités de levage à la fléchette pliante à variation hydraulique avec télescope rallongé

		44 - 197 ft			23 ft			86 ft			360°			163100 lbs			85%			
		44 ft + 23 ft			58 ft + 23 ft			72 ft + 23 ft			86 ft + 23 ft			100 ft + 23 ft			114 ft + 23 ft			
		86 ft			86 ft			86 ft			86 ft			86 ft			86 ft			
		0°	22,5°	45°	0°	22,5°	45°	0°	22,5°	45°	0°	22,5°	45°	0°	22,5°	45°	0°	22,5°	45°	
18	26																			
21	26				23															
24	25.9				23			20.6			19.4									
27	25.6				23			20.6			19.4			17.5						
30	25.2				23			20.6			19.4			17.5			16.5			
33	24.6				22.8			20.6			19.4			17.5			16.5			
36	23.9				22.6			20.6			19.3			17.5			16.5			
39	23.1				22.3			20.4			19.2			17.5			16.5			
45	21.6				21.5			19.9			19			17.4			16.5			
51	20	15.9			20.5			19.3			18.5			17.2			16.3			
57	18.5	15.1			19.3	14.6		18.5	14.3		18			16.8			16			
63	17.2	14.2			18.2	14.1		17.6	13.9		17.3	13.5		16.4			15.7			
69	15.9	13.3			17	13.4		16.7	13.2		16.5	13.2		15.9	12.6		15.3	12.1		
75	14.8	12.6	9.7		15.9	12.7	9.7	15.8	12.6		15.7	12.6		15.2	12.4		14.9	11.9		
81	13.7	11.9	9.6		14.9	12.1	9.6	14.9	12	9.2	14.9	12	9.2	14.5	11.9		14.3	11.6		
87	12.7	11.2	9.2		13.8	11.5	9.3	14	11.5	9.2	14.2	11.6	9.2	13.9	11.4	8.9	13.7	11.4		
93	11.7	10.7	8.9		13	10.9	9	13.1	11	9	13.4	11.1	8.9	13.2	11	8.9	13.2	11	8.6	
99	10.8	10.1	8.6		12.1	10.5	8.7	12.4	10.6	8.7	12.7	10.7	8.7	12.6	10.6	8.7	12.6	10.6	8.6	
105	10.1	9.7	8.4		11.2	10	8.5	11.7	10.2	8.5	12	10.3	8.5	12	10.3	8.5	12.1	10.3	8.4	
111	9.4	9.2	8.2		10.6	9.5	8.3	11	9.8	8.3	11.4	9.9	8.4	11.4	10	8.3	11.5	10	8.3	
117	8.7	8.7	8.1		10	9.1	8.2	10.3	9.4	8.2	10.8	9.6	8.2	10.9	9.6	8.2	11	9.7	8.2	
123	8.2	8.2	8		9.3	8.7	8.1	9.8	9	8.1	10.3	9.2	8.1	10.4	9.3	8.1	10.5	9.4	8.1	
129	7.6	7.7	7.8		8.7	8.3	7.9	9.3	8.6	8	9.7	8.8	8	9.9	8.9	8	10.1	9	8	
135	7.1	7.3			8.2	7.9	7.8	8.8	8.2	7.9	9.2	8.5	7.9	9.5	8.6	7.9	9.7	8.7	7.9	
141	6.6				7.7	7.5	7.6	8.3	7.8	7.7	8.8	8.1	7.8	9	8.3	7.8	9.3	8.4	7.8	
147					7.3	7.1		7.9	7.5	7.5	8.4	7.8	7.6	8.6	8	7.7	8.9	8.1	7.7	
153					6.8			7.5	7.2		8	7.5	7.5	8.1	7.7	7.5	8.5	7.9	7.6	
159								7.1	6.9		7.6	7.2	7.4	7.7	7.4	7.3	8.2	7.6	7.4	
165								6.7			7.3	7		7.3	7.1	7.2	7.8	7.3	7.3	
171											7	6.8		6.9	6.8	7	7.5	7.1	7.1	
177											6.6	6.6		6.6	6.6	6.7	7.1	6.9	7	
183											6.4			6.2	6.3		6.8	6.7	6.9	
189														5.9	5.9		6.5	6.4	6.6	
195														5.6	5.7		6.2	6.2		
207																	5.6	5.8		

TAB 151333 / 151340 / 151347

STERLING CRANE

Lifting capacities on the hydraulically variable folding jib with boom extension

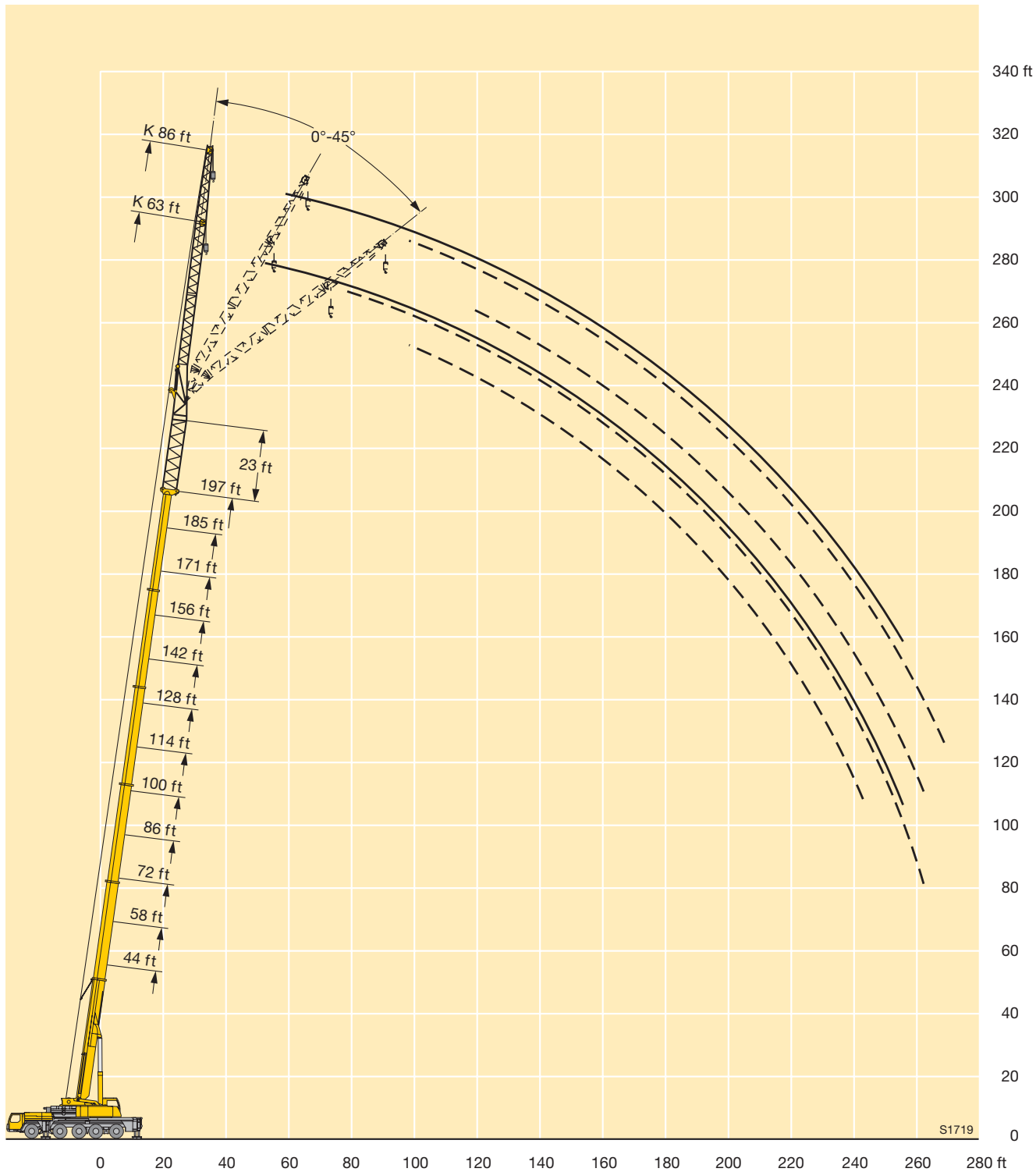
Capacités de levage à la flèche pliante à variation hydraulique avec télescope rallongé

		44 - 197 ft			23 ft			86 ft			360°			163100 lbs			85%			
		128 ft + 23 ft			142 ft + 23 ft			156 ft + 23 ft			171 ft + 23 ft			185 ft + 23 ft			197 ft + 23 ft			
		86 ft			86 ft			86 ft			86 ft			86 ft			86 ft			
		0°	22,5°	45°	0°	22,5°	45°	0°	22,5°	45°	0°	22,5°	45°	0°	22,5°	45°	0°	22,5°	45°	
39	15																			
45	15				14.3			13.1												
51	15				14.3			13.1			11.9			10.9						
57	15				14.2			13.1			11.9			10.9			9.5			
63	14.7				14			13.1			11.9			10.9			9.5			
69	14.4				13.7			13			11.9			10.9			9.5			
75	14.1	11.4			13.5	11.5		12.8			11.9			10.9			9.5			
81	13.7	11.3			13.2	11.4		12.5	10.4		11.8	10.2		10.9			9.4			
87	13.2	11.2			12.8	11		12.2	10.4		11.6	10.2		10.7	9.5		9.2			
93	12.8	10.8	8.5		12.5	10.7		11.9	10.4		11.4	10.2		10.6	9.5		9.2	8.5		
99	12.3	10.5	8.5		12.1	10.4	8.3	11.6	10.2	8	11.2	9.9		10.4	9.5		9	8.5		
105	11.8	10.2	8.3		11.7	10.1	8.3	11.3	9.9	8	10.9	9.7		10.2	9.4		9	8.5		
111	11.4	9.9	8.2		11.2	9.9	8.2	11	9.7	8	10.6	9.5	7.8	10.1	9.2		9	8.3		
117	10.9	9.6	8.1		10.9	9.6	8.1	10.6	9.4	8	10.3	9.2	7.8	9.8	8.9	7.5	9	8.3	7	
123	10.5	9.3	8		10.5	9.3	8	10.3	9.1	7.9	10	9	7.7	9.6	8.7	7.5	8.8	8.1	7	
129	10.1	9	7.9		10.1	9	7.9	10	8.8	7.8	9.7	8.7	7.7	9.3	8.4	7.5	8.6	7.9	7	
135	9.7	8.7	7.8		9.8	8.7	7.8	9.6	8.6	7.7	9.4	8.5	7.6	9.1	8.2	7.5	8.4	7.8	7	
141	9.3	8.4	7.7		9.4	8.4	7.7	9.3	8.3	7.6	9.1	8.2	7.5	8.8	8	7.4	8.2	7.6	7	
147	9	8.1	7.6		9.1	8.2	7.6	9	8.1	7.5	8.9	8	7.4	8.6	7.8	7.3	8	7.4	6.9	
153	8.7	7.9	7.5		8.8	7.9	7.5	8.7	7.9	7.4	8.6	7.8	7.3	8.4	7.6	7.2	7.8	7.2	6.8	
159	8.3	7.6	7.4		8.5	7.7	7.4	8.4	7.6	7.3	8.4	7.6	7.2	8.2	7.4	7.1	7.6	7.1	6.7	
165	8	7.4	7.3		8.2	7.4	7.3	8.2	7.4	7.2	8.1	7.4	7.1	8	7.3	7	7.3	6.9	6.6	
171	7.6	7.2	7.2		7.9	7.3	7.1	7.9	7.2	7.1	7.9	7.2	7	7.7	7.1	6.9	7.1	6.8	6.5	
177	7.2	7	7		7.6	7.1	7	7.7	7	7	7.7	7	6.9	7.5	6.9	6.8	6.8	6.6	6.4	
183	6.9	6.7	6.9		7.3	6.9	7	7.4	6.9	6.9	7.5	6.8	6.8	7.3	6.8	6.7	6.6	6.5	6.3	
189	6.5	6.4	6.6		7	6.7	6.8	7.1	6.7	6.8	7.2	6.7	6.7	7.1	6.6	6.6	6.3	6.3	6.2	
195	6.1	6.2	6.4		6.6	6.5	6.7	6.8	6.6	6.7	7	6.6	6.6	6.9	6.5	6.5	6.1	6.1	6.1	
207	5.5	5.6			6	6	6.2	6.1	6.2	6.4	6.5	6.3	6.5	6.5	6.2	6.4	5.5	5.7	5.8	
219	4.9				5.5	5.5		5.5	5.6	5.8	5.9	5.9	6.2	6.1	6	6.2	4.9	5.1	5.4	
231					4.9			4.9	5		5.3	5.4	5.6	5.2	5.7	5.9	4.3	4.6	4.8	
243								4.3			4.8	4.9		4.1	5	5.2	3.7	4.1	4.3	
255											4.3	4.5		3	3.8	3.8	2.7	3.5	3.8	
267														2.6			2.4			

TAB 151333 / 151340 / 151347

STERLING CRANE

Lifting heights Hauteurs de levage



STERLING CRANE

Lifting capacities on the hydraulically variable folding jib with boom extension

Capacités de levage à la fléchette pliante à variation hydraulique avec télescope rallongé

		44 - 197 ft			23 ft			95 ft			360°			163100 lbs			85%			
		44 ft + 23 ft			58 ft + 23 ft			72 ft + 23 ft			86 ft + 23 ft			100 ft + 23 ft			114 ft + 23 ft			
		95 ft			95 ft			95 ft			95 ft			95 ft			95 ft			
		0°	22,5°	45°	0°	22,5°	45°	0°	22,5°	45°	0°	22,5°	45°	0°	22,5°	45°	0°	22,5°	45°	
18	17.2																			
21	17.2				16.5															
24	17.2				16.5			15.3												
27	17.2				16.5			15.3			14.6									
30	17.2				16.5			15.3			14.6				13.6					
33	17.2				16.5			15.3			14.6				13.6					
36	17.2				16.5			15.3			14.6				13.6			12.9		
39	17.1				16.4			15.3			14.6				13.6			12.9		
45	16.6				16.1			15.1			14.5				13.6			12.9		
51	16				15.7			14.9			14.3				13.5			12.9		
57	15.3	12.6			15.2	12.5		14.6			14.1				13.3			12.8		
63	14.6	12.1			14.5	12.1		14.1	11.6		13.8				13.1			12.6		
69	13.8	11.5			13.9	11.4		13.6	11.3		13.4	10.7			12.9	10.7		12.4		
75	13.1	10.8			13.3	10.9		13	10.7		12.9	10.6			12.6	10.5		12.2	9.9	
81	12.3	10.3	8		12.6	10.4	8.1	12.5	10.3		12.5	10.3			12.2	10.1		11.9	9.9	
87	11.7	9.8	7.9		12	9.9	8	12	9.9	7.7	12	9.9			11.8	9.7		11.6	9.6	
93	11	9.3	7.7		11.4	9.5	7.7	11.4	9.5	7.7	11.5	9.5	7.5		11.3	9.4	7.3	11.2	9.3	
99	10.4	8.9	7.5		10.8	9	7.5	10.9	9.1	7.5	11.1	9.1	7.4		10.9	9.1	7.3	10.9	9	7
105	9.8	8.4	7.2		10.3	8.7	7.3	10.4	8.7	7.3	10.6	8.8	7.3		10.5	8.8	7.2	10.5	8.8	7
111	9.2	8.1	7.1		9.7	8.3	7.1	9.9	8.4	7.1	10.2	8.5	7.1		10.2	8.5	7.1	10.2	8.5	7
117	8.6	7.8	6.9		9.2	8	7	9.5	8.1	7	9.7	8.3	7		9.8	8.3	6.9	9.8	8.3	6.9
123	8.1	7.5	6.8		8.7	7.7	6.8	9	7.8	6.8	9.3	8	6.9		9.4	8	6.8	9.4	8	6.8
129	7.6	7.2	6.7		8.2	7.5	6.8	8.6	7.6	6.7	8.9	7.7	6.7		9	7.8	6.7	9.1	7.8	6.7
135	7.1	6.9	6.7		7.8	7.2	6.7	8.2	7.4	6.7	8.5	7.5	6.7		8.6	7.6	6.6	8.8	7.6	6.6
141	6.7	6.6			7.3	6.9	6.7	7.7	7.2	6.6	8.1	7.3	6.6		8.3	7.4	6.6	8.4	7.4	6.5
147	6.2	6.2			6.9	6.7	6.6	7.4	6.9	6.6	7.8	7.1	6.6		7.9	7.1	6.5	8.1	7.2	6.5
153					6.5	6.4		7	6.7	6.6	7.4	6.9	6.5		7.6	6.9	6.5	7.8	7.1	6.4
159					6.2	6.1		6.7	6.4		7	6.7	6.5		7.3	6.7	6.5	7.5	6.9	6.4
165								6.3	6.2		6.8	6.4	6.5		7	6.5	6.5	7.2	6.7	6.4
171								6	6		6.5	6.2			6.7	6.3	6.4	7	6.5	6.3
177								5.7	5.9		6.2	6			6.4	6.2	6.3	6.7	6.3	6.3
183											5.9	5.8			6.1	6	6.2	6.5	6.1	6.2
189											5.7	5.8			5.7	5.7		6.2	5.9	6.2
195															5.4	5.5		5.9	5.8	6.1
207															5			5.4	5.4	
219																		5.1		

TAB 151333 / 151340 / 151347

STERLING CRANE

Lifting capacities on the hydraulically variable folding jib with boom extension

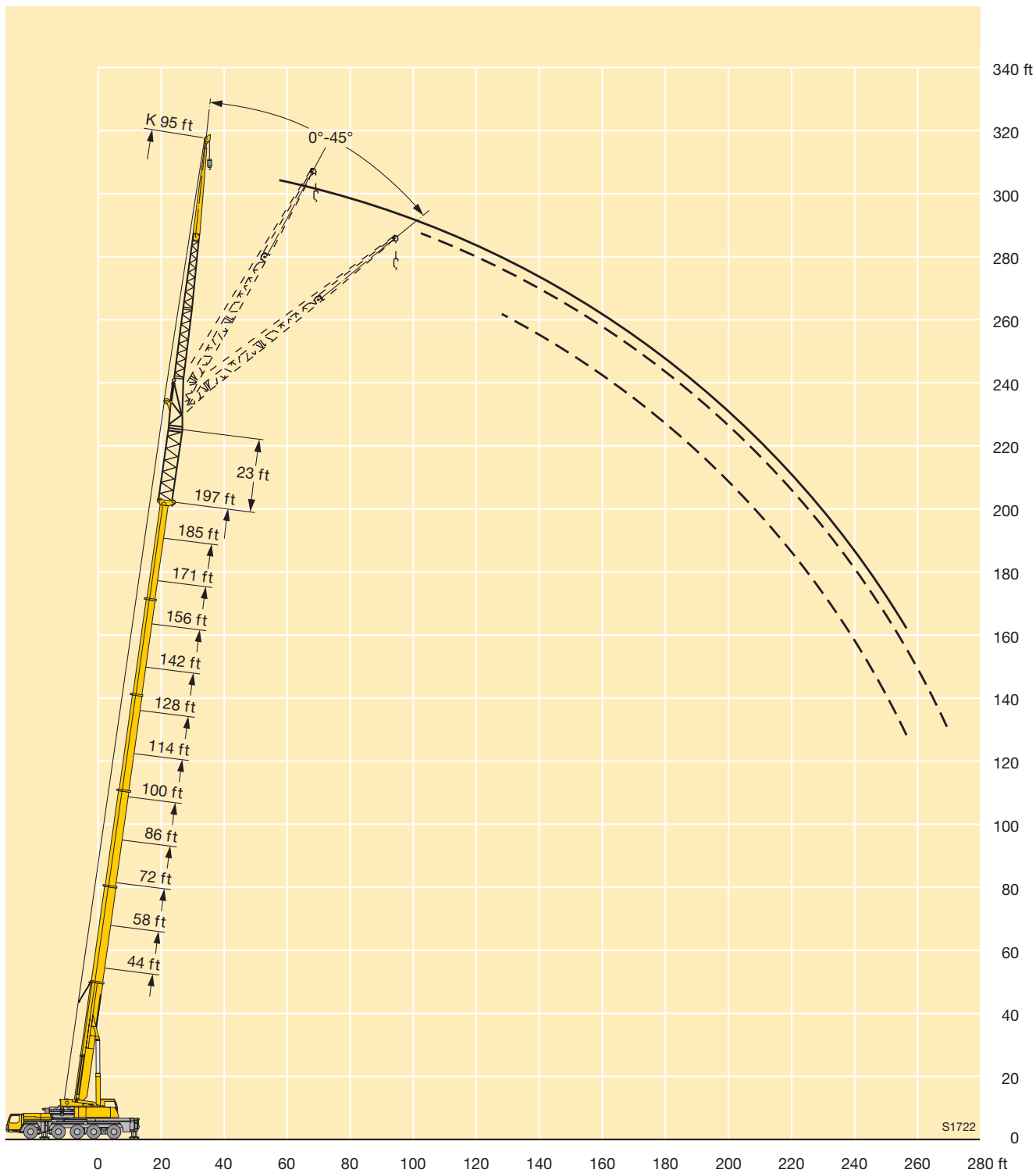
Capacités de levage à la fléchette pliante à variation hydraulique avec télescope rallongé

		44 - 197 ft			23 ft			95 ft			360°			163100 lbs			85%			
		128 ft + 23 ft			142 ft + 23 ft			156 ft + 23 ft			171 ft + 23 ft			185 ft + 23 ft			197 ft + 23 ft			
		95 ft			95 ft			95 ft			95 ft			95 ft			95 ft			
		0°	22,5°	45°	0°	22,5°	45°	0°	22,5°	45°	0°	22,5°	45°	0°	22,5°	45°	0°	22,5°	45°	
39	11.9																			
45	11.9				11.2			10.7												
51	11.9				11.2			10.7		9.7			9							
57	11.9				11.2			10.7		9.7			9				7.8			
63	11.9				11.2			10.7		9.7			9				7.8			
69	11.8				11.2			10.7		9.7			9				7.8			
75	11.6	9.7			11.1			10.6		9.7			9				7.8			
81	11.4	9.6			11	9.4		10.5		9.7			9				7.8			
87	11.2	9.4			10.9	9.3		10.3	8.7	9.7		8.3	9				7.8			
93	10.9	9.2			10.7	9.1		10.2	8.7	9.7		8.3	9	7.8			7.8			
99	10.6	8.9	7.1		10.4	8.8		10.1	8.6	9.6	8.3		8.9	7.8			7.8	7		
105	10.3	8.7	7.1		10.1	8.6		9.8	8.4	9.5	8.2		8.9	7.8			7.8	7		
111	10	8.4	7		9.9	8.4	6.8	9.6	8.2	9.2	8		8.8	7.8			7.8	7		
117	9.7	8.2	6.8		9.6	8.1	6.8	9.3	8	6.6	9	7.9	6.3	8.6	7.6		7.6	7		
123	9.4	8	6.7		9.3	7.9	6.7	9	7.8	6.6	8.8	7.7	6.3	8.4	7.5		7.3	7		
129	9	7.8	6.6		9	7.8	6.6	8.8	7.7	6.5	8.5	7.5	6.3	8.2	7.4	6.1	7.3	7	5.6	
135	8.7	7.6	6.6		8.7	7.6	6.5	8.5	7.5	6.5	8.3	7.4	6.3	8	7.2	6.1	7.1	6.9	5.6	
141	8.4	7.4	6.5		8.4	7.4	6.4	8.3	7.3	6.4	8.1	7.2	6.3	7.8	7.1	6.1	7	6.8	5.6	
147	8.1	7.2	6.4		8.1	7.2	6.4	8.1	7.2	6.3	7.9	7.1	6.2	7.6	6.9	6.1	7	6.6	5.6	
153	7.9	7	6.4		7.9	7.1	6.3	7.8	7	6.3	7.7	6.9	6.2	7.4	6.8	6.1	6.9	6.5	5.6	
159	7.6	6.9	6.3		7.7	6.9	6.3	7.6	6.9	6.3	7.5	6.8	6.2	7.3	6.6	6.1	6.8	6.3	5.6	
165	7.3	6.7	6.3		7.4	6.7	6.3	7.3	6.7	6.2	7.2	6.6	6.1	7.1	6.5	6	6.6	6.2	5.6	
171	7	6.5	6.3		7.2	6.5	6.2	7.2	6.5	6.2	7	6.5	6.1	6.9	6.3	6	6.5	6.1	5.6	
177	6.8	6.3	6.2		6.9	6.4	6.2	6.9	6.4	6.1	6.9	6.3	6.1	6.7	6.2	6	6.3	6	5.6	
183	6.5	6.2	6.2		6.7	6.2	6.2	6.7	6.2	6.1	6.7	6.2	6	6.6	6.1	5.9	6.1	5.8	5.6	
189	6.2	6	6.1		6.4	6.1	6.1	6.5	6.1	6	6.5	6	6	6.4	5.9	5.9	5.9	5.7	5.6	
195	5.9	5.8	6		6.2	5.9	6	6.3	5.9	6	6.3	5.9	5.9	6.2	5.8	5.8	5.8	5.6	5.6	
207	5.4	5.5			5.7	5.6	5.9	5.8	5.7	5.9	6	5.7	5.8	5.9	5.6	5.7	5.3	5.3	5.4	
219	4.8	5			5.3	5.3		5.3	5.3	5.6	5.5	5.4	5.7	5.7	5.4	5.6	4.7	5	5.2	
231					4.8	4.9		4.8	4.9	5.2	5.1	5.1	5.4	5.3	5.2	5.6	4.2	4.5	4.8	
243								4.3	4.5		4.6	4.8	5	4.5	4.9	5.3	3.8	4.1	4.3	
255								3.9	4		4.3	4.4		3.4	4.3	4.6	3	3.7	3.8	
267											3.7	4		2.4	3.2		3			

TAB 151333 / 151340 / 151347

STERLING CRANE

Lifting heights Hauteurs de levage



STERLING CRANE

Lifting capacities on the hydraulically variable folding jib with boom extension

Capacités de levage à la fléchette pliante à variation hydraulique avec télescope rallongé

		44 - 197 ft			23 ft			118 ft			360°			163100 lbs			85%			
		44 ft + 23 ft			58 ft + 23 ft			72 ft + 23 ft			86 ft + 23 ft			100 ft + 23 ft			114 ft + 23 ft			
		118 ft			118 ft			118 ft			118 ft			118 ft			118 ft			
		0°	22,5°	45°	0°	22,5°	45°	0°	22,5°	45°	0°	22,5°	45°	0°	22,5°	45°	0°	22,5°	45°	
21	12.6																			
24	12.6				11.9															
27	12.6				11.9			10.9												
30	12.6				11.9			10.9			10.4									
33	12.6				11.9			10.9			10.4									
36	12.6				11.9			10.9			10.4			9.7						
39	12.6				11.9			10.9			10.4			9.7			9.2			
45	12.3				11.8			10.9			10.4			9.7			9.2			
51	11.9				11.5			10.8			10.4			9.7			9.2			
57	11.4				11.1			10.6			10.3			9.7			9.2			
63	10.8				10.7			10.3			10			9.5			9.2			
69	10.3	8			10.2	8		9.9			9.7			9.2			9			
75	9.7	7.8			9.7	7.8		9.5	7.3		9.3			9			8.7			
81	9.2	7.4			9.2	7.3		9	7.2		9	6.9		8.7	6.8		8.5			
87	8.6	7			8.8	7		8.6	6.9		8.6	6.8		8.4	6.7		8.2	6.3		
93	8.1	6.6			8.3	6.6		8.2	6.5		8.2	6.5		8	6.4		8	6.3		
99	7.6	6.2	4.8		7.8	6.3	4.8	7.9	6.2		7.9	6.2		7.7	6.1		7.7	6.1		
105	7.2	5.9	4.8		7.4	6	4.8	7.5	6		7.5	6		7.4	5.9		7.4	5.8		
111	6.7	5.6	4.6		7	5.7	4.6	7.1	5.7	4.6	7.2	5.7	4.6	7.1	5.6		7.1	5.6		
117	6.3	5.3	4.5		6.6	5.4	4.5	6.7	5.5	4.4	6.9	5.5	4.5	6.8	5.4	4.4	6.8	5.4		
123	6	5.1	4.4		6.3	5.2	4.4	6.4	5.2	4.4	6.6	5.3	4.4	6.6	5.2	4.3	6.6	5.2	4.3	
129	5.6	4.8	4.2		5.9	5	4.3	6.1	5	4.3	6.3	5.1	4.3	6.3	5.1	4.2	6.4	5.1	4.2	
135	5.3	4.7	4.1		5.6	4.8	4.2	5.8	4.8	4.2	6	4.9	4.2	6	4.9	4.1	6.1	4.9	4.1	
141	4.9	4.5	4.1		5.3	4.6	4.1	5.5	4.7	4.1	5.7	4.7	4.1	5.8	4.8	4.1	5.9	4.8	4.1	
147	4.6	4.3	4		5	4.5	4	5.3	4.5	4	5.5	4.6	4	5.6	4.6	4	5.6	4.6	4	
153	4.4	4.2	4		4.8	4.3	4	5	4.4	4	5.2	4.5	4	5.3	4.5	3.9	5.4	4.5	3.9	
159	4.1	4.1	4		4.5	4.2	4	4.8	4.3	3.9	5	4.3	3.9	5.1	4.4	3.9	5.2	4.4	3.9	
165	3.9	4			4.3	4.1	4	4.6	4.2	3.9	4.8	4.2	3.9	4.9	4.3	3.9	5	4.3	3.8	
171	3.7				4.1	4		4.4	4.1	3.9	4.6	4.1	3.9	4.8	4.2	3.8	4.8	4.2	3.8	
177	3.5				3.8	4		4.2	4	3.9	4.4	4.1	3.9	4.6	4.1	3.8	4.7	4.1	3.8	
183					3.7	3.9		4	3.9	3.9	4.3	4	3.9	4.5	4	3.8	4.5	4	3.8	
189					3.6			3.8	3.9		4.1	3.9	3.9	4.3	3.9	3.8	4.4	4	3.8	
195								3.7	3.9		4	3.9	3.9	4.2	3.9	3.8	4.3	3.9	3.8	
207											3.7	3.8		3.9	3.8		4	3.8	3.8	
219														3.6	3.7		3.8	3.7		
231																	3.6	3.6		

TAB 151333 / 151340 / 151347

STERLING CRANE

Lifting capacities on the hydraulically variable folding jib with boom extension

Capacités de levage à la flèche pliante à variation hydraulique avec télescope rallongé

		44 - 197 ft			23 ft			118 ft			360°			163100 lbs			85%			
		128 ft + 23 ft			142 ft + 23 ft			156 ft + 23 ft			171 ft + 23 ft			185 ft + 23 ft			197 ft + 23 ft			
		118 ft			118 ft			118 ft			118 ft			118 ft			118 ft			
		0°	22,5°	45°	0°	22,5°	45°	0°	22,5°	45°	0°	22,5°	45°	0°	22,5°	45°	0°	22,5°	45°	
45	8.3				8															
51	8.3				8			7.5			6.6									
57	8.3				8			7.5			6.6			5.8						
63	8.3				8			7.5			6.6			5.8						
69	8.3				8			7.5			6.6			5.8			4.6			
75	8.2				8			7.5			6.6			5.8			4.6			
81	8.1				7.9			7.4			6.6			5.8			4.6			
87	7.9	6.1			7.7			7.3			6.6			5.8			4.6			
93	7.7	6.1			7.5	5.8		7.1			6.6			5.8			4.6			
99	7.5	6			7.2	5.8		6.9	5.3		6.5	5.1		5.8			4.6			
105	7.2	5.7			7	5.6		6.8	5.3		6.5	5.1		5.8			4.6			
111	7	5.5			6.8	5.5		6.6	5.3		6.3	5.1		5.8	4.6		4.6			
117	6.7	5.4			6.6	5.3		6.4	5.2		6.2	4.9		5.8	4.6		4.6	4.1		
123	6.5	5.2	4.1		6.4	5.1		6.2	5.1		6.1	4.9		5.7	4.6		4.6	4.1		
129	6.3	5	4.1		6.2	5	4.1	6.1	4.9	3.9	5.9	4.8		5.6	4.6		4.6	4.1		
135	6.1	4.9	4.1		6	4.9	4.1	5.9	4.8	3.9	5.7	4.7	3.6	5.4	4.6		4.6	4.1		
141	5.8	4.8	4		5.8	4.7	4	5.7	4.7	3.9	5.6	4.6	3.6	5.3	4.5	3.6	4.6	4.1		
147	5.6	4.6	3.9		5.6	4.6	3.9	5.5	4.6	3.9	5.4	4.5	3.6	5.2	4.4	3.6	4.6	4.1	3.5	
153	5.4	4.5	3.9		5.5	4.5	3.9	5.4	4.5	3.8	5.3	4.4	3.6	5.1	4.3	3.6	4.6	4.1	3.5	
159	5.2	4.4	3.9		5.3	4.4	3.8	5.2	4.4	3.8	5.1	4.3	3.6	5	4.3	3.6	4.6	4.1	3.5	
165	5.1	4.3	3.8		5.1	4.3	3.8	5	4.3	3.8	5	4.2	3.6	4.8	4.2	3.6	4.6	4	3.5	
171	4.9	4.2	3.8		4.9	4.2	3.8	4.9	4.2	3.7	4.9	4.2	3.6	4.7	4.1	3.6	4.5	3.9	3.5	
177	4.8	4.1	3.8		4.8	4.1	3.7	4.7	4.1	3.7	4.7	4.1	3.6	4.6	4	3.6	4.4	3.9	3.5	
183	4.6	4	3.7		4.7	4	3.7	4.6	4	3.7	4.6	4	3.6	4.5	3.9	3.4	4.3	3.8	3.5	
189	4.4	4	3.7		4.6	4	3.7	4.5	4	3.6	4.5	3.9	3.6	4.4	3.9	3.4	4.2	3.8	3.4	
195	4.3	3.9	3.7		4.4	3.9	3.7	4.4	3.9	3.6	4.4	3.9	3.6	4.3	3.8	3.4	4.1	3.7	3.4	
207	4.1	3.8	3.7		4.2	3.8	3.7	4.2	3.8	3.6	4.2	3.7	3.6	4.1	3.7	3.4	4	3.6	3.4	
219	3.8	3.7	3.7		3.9	3.7	3.7	4	3.7	3.6	3.9	3.6	3.6	3.9	3.6	3.4	3.7	3.5	3.4	
231	3.6	3.6			3.7	3.6	3.7	3.7	3.6	3.6	3.8	3.6	3.6	3.8	3.5	3.4	3.3	3.4	3.3	
243	3.2	3.4			3.5	3.5		3.5	3.5	3.6	3.6	3.4	3.6	3.6	3.4	3.4	2.9	3.2	3.2	
255					3.2	3.3		3.3	3.4	3.6	3.4	3.4	3.6	3.4	3.3	3.4	2.5	2.9	3.1	
267					3			2.9	3.1		3.2	3.3	3.5	2.5	3.2	3.4		2.6	2.8	
279											2.8	3.1			2.6	2.8			2.3	

TAB 151333 / 151340 / 151347

STERLING CRANE

Lifting heights Hauteurs de levage

