



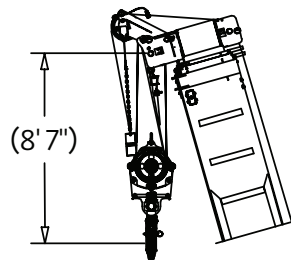
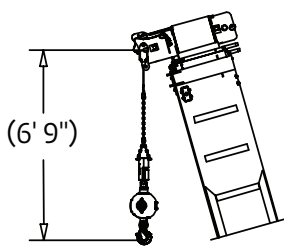
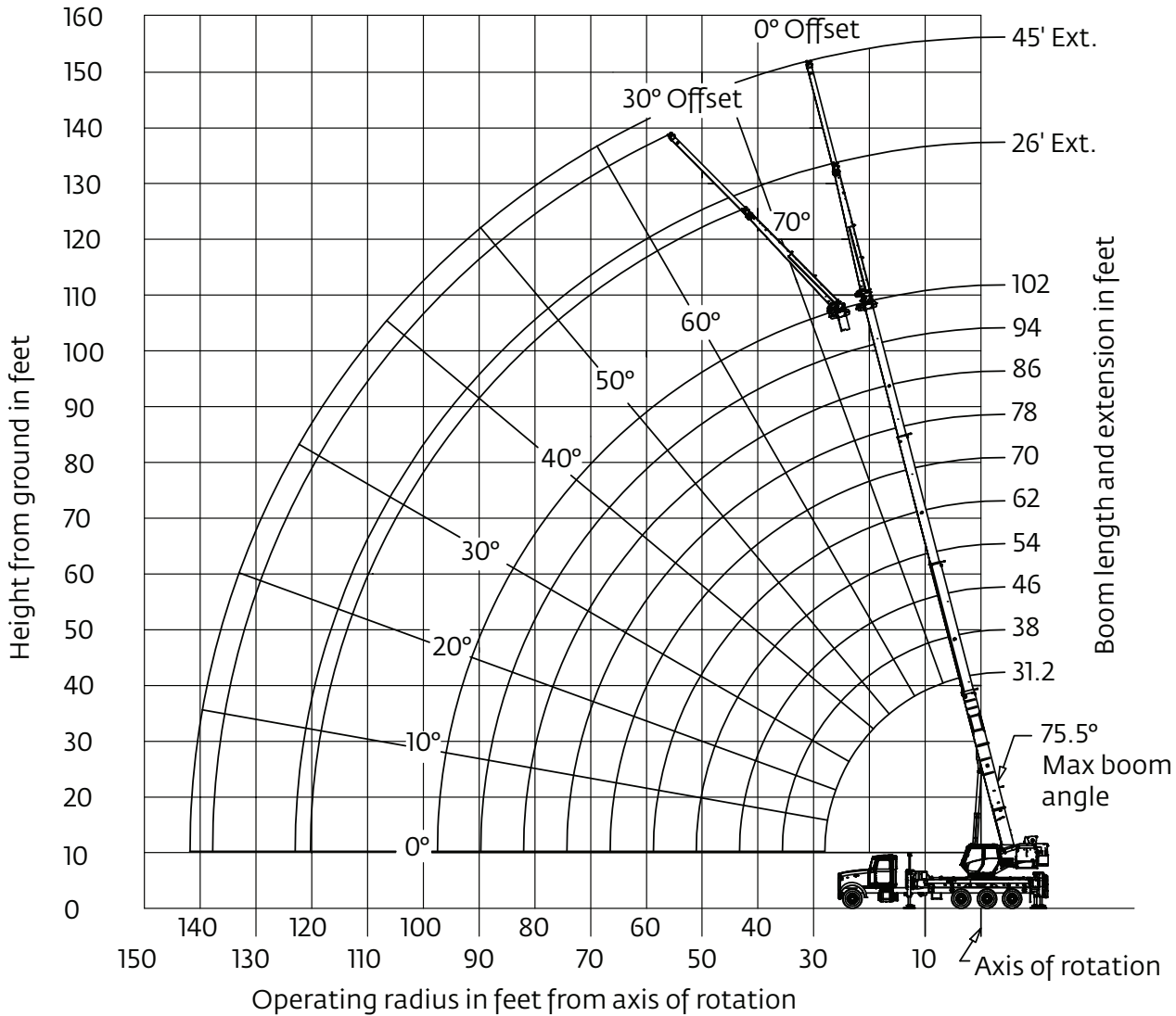
LIFTING CHARTS - Boom Trucks

NATIONAL MODEL NBT55 - 55 TON CAPACITY

Working range

NBT50/55-102: 102 ft main boom, full span outriggers, with extensions

(Boom deflection not shown)



Dimensions are for largest furnished hook block and headache ball with anti-two block activated.

*This drawing shows the physical reach of the machine. Always refer to the load chart to see which portions of this diagram are valid for the specific machine configuration and where the loads are structurally or stability limited.

Load chart

NBT55



31,1 m
(102 ft)



2722 kg
(6000 lb)



100%



360°

Radius in feet	#0001									
	Main boom length in feet									
	31.2	38-A	46-B	54-C	62-D	70-E	78-F	86-G	94-H	102
8	110,000 (68.3)									
10	93,350 (64.2)	51,200 (69.2)	50,350 (73.1)							
12	82,350 (59.9)	51,200 (65.8)	50,350 (70.4)	50,250 (73.9)						
15	66,350 (53.0)	51,200 (60.7)	50,350 (66.4)	50,250 (70.5)	50,000 (73.5)					
20	48,750 (39.8)	49,150 (51.3)	49,450 (59.3)	49,650 (64.6)	46,450 (68.5)	41,000 (71.3)	34,350 (73.7)			
25	31,500 (20.0)	38,350 (40.3)	38,650 (51.4)	38,850 (58.3)	39,000 (63.2)	35,950 (66.9)	30,150 (69.7)	26,800 (72.2)	23,800 (74.2)	
30		29,000 (25.7)	31,100 (42.6)	31,300 (51.6)	31,500 (57.7)	31,400 (62.2)	26,750 (65.7)	23,800 (68.6)	21,250 (71.0)	18,950 (72.9)
35			25,550 (31.9)	25,750 (44.2)	25,950 (51.9)	26,050 (57.3)	23,700 (61.5)	21,250 (64.9)	18,950 (67.7)	17,000 (69.9)
40			16,000 (15.1)	20,800 (35.7)	21,000 (45.6)	21,150 (52.1)	21,150 (57.1)	19,100 (61.1)	17,100 (64.3)	15,350 (66.9)
45				16,800 (24.4)	17,000 (38.4)	17,200 (46.4)	17,300 (52.4)	17,050 (57.1)	15,550 (60.8)	13,950 (63.7)
50					14,100 (29.6)	14,250 (40.2)	14,350 (47.3)	14,450 (52.8)	14,200 (57.1)	12,700 (60.5)
55					*11,150 (18.6)	11,950 (33.0)	12,100 (41.8)	12,200 (48.2)	12,250 (53.1)	11,650 (57.1)
60						10,250 (24.9)	10,400 (36.3)	10,500 (43.7)	10,550 (49.3)	10,650 (53.8)
65						*6400 (9.8)	8900 (29.0)	9000 (38.3)	9100 (44.9)	9150 (50.0)
70							7650 (19.4)	7800 (32.2)	7850 (40.1)	7950 (45.9)
75								6750 (24.7)	6850 (34.7)	6900 (41.6)
80								*5200 (13.2)	5950 (28.4)	6000 (36.7)
85									5150 (20.3)	5250 (31.3)
90										4550 (24.7)
95										4000 (15.5)
97										*2200 (8.7)
Minimum boom angle (°) for indicated length (no load)										0
Maximum boom length (ft) at 0° boom angle (no load)										102

NOTE: () Boom angles are in degrees.

*Loads are structurally limited.

#LMI operating code. Refer to LMI manual for operating instructions.

Lifting capacities at zero degree boom angle										
Boom angle	Main boom length in feet									
	31.2	38-A	46-B	54-C	62-D	70-E	78-F	86-G	94-H	
0°	12,450 (27)	9250 (33.8)	6750 (41.8)	5000 (49.8)	3700 (57.8)	2700 (65.8)	1950 (73.8)	1300 (81.8)	700 (89.8)	

NOTE: () Reference radii in feet.

80033203

Load chart

NBT55



31,1 m
(102 ft)



Jib Stowed



2722 kg
(6000 lb)



100%



360°

Radius in feet	#0002									
	Main boom length in feet									
	31.2	38-A	46-B	54-C	62-D	70-E	78-F	86-G	94-H	102
8	108,900 (68.3)									
10	92,250 (64.2)	50,300 (69.2)	49,600 (73.1)							
12	81,250 (59.9)	50,300 (65.8)	49,600 (70.4)	49,650 (73.9)						
15	65,250 (53.0)	50,300 (60.7)	49,600 (66.4)	49,650 (70.5)	49,450 (73.5)					
20	47,650 (39.8)	48,250 (51.3)	48,700 (59.3)	49,050 (64.6)	45,900 (68.5)	40,550 (71.3)	33,950 (73.7)			
25	30,400 (20.0)	37,450 (40.3)	37,900 (51.4)	38,250 (58.3)	38,450 (63.2)	35,500 (66.9)	29,750 (69.7)	26,400 (72.2)	23,450 (74.2)	
30		28,100 (25.7)	30,350 (42.6)	30,700 (51.6)	30,950 (57.7)	30,950 (62.2)	26,350 (65.7)	23,400 (68.6)	20,900 (71.0)	18,650 (72.9)
35			24,800 (31.9)	25,150 (44.2)	25,400 (51.9)	25,600 (57.3)	23,300 (61.5)	20,850 (64.9)	18,600 (67.7)	16,700 (69.9)
40			15,250 (15.1)	20,200 (35.7)	20,450 (45.6)	20,700 (52.1)	20,750 (57.1)	18,700 (61.1)	16,750 (64.3)	15,050 (66.9)
45				16,200 (24.4)	16,450 (38.4)	16,750 (46.4)	16,900 (52.4)	16,650 (57.1)	15,200 (60.8)	13,650 (63.7)
50					13,550 (29.6)	13,800 (40.2)	13,950 (47.3)	14,050 (52.8)	13,850 (57.1)	12,400 (60.5)
55					*10,600 (18.6)	11,500 (33.0)	11,700 (41.8)	11,800 (48.2)	11,900 (53.1)	11,350 (57.1)
60						9800 (24.9)	10,000 (36.3)	10,100 (43.7)	10,200 (49.3)	10,350 (53.8)
65						*5950 (9.8)	8500 (29.0)	8600 (38.3)	8750 (44.9)	8850 (50.0)
70							7250 (19.4)	7400 (32.2)	7500 (40.1)	7650 (45.9)
75								6350 (24.7)	6500 (34.7)	6600 (41.6)
80								*4800 (13.2)	5600 (28.4)	5700 (36.7)
85									4800 (20.3)	4950 (31.3)
90										4250 (24.7)
95										3700 (15.5)
97										*1900 (8.7)
Minimum boom angle (°) for indicated length (no load)										0
Maximum boom length (ft) at 0° boom angle (no load)										102

NOTE: () Boom angles are in degrees.

*Loads are structurally limited.

#LMI operating code. Refer to LMI manual for operating instructions.

Lifting capacities at zero degree boom angle										
Boom angle	Main boom length in feet									
	31.2	38-A	46-B	54-C	62-D	70-E	78-F	86-G		
0°	11,350 (27)	8350 (33.8)	6000 (41.8)	4400 (49.8)	3150 (57.8)	2250 (65.8)	1550 (73.8)	900 (81.8)		

NOTE: () Reference radii in feet.

80033207

STERLING CRANE

Load chart

NBT55



31,1 m
(102 ft)



2722 kg
(6000 lb)



100%



Over Rear

Radius in feet	#0003									
	Main boom length in feet									
	31.2	38-A	46-B	54-C	62-D	70-E	78-F	86-G	94-H	102
8	110,000 (68.3)									
10	93,350 (64.2)	51,200 (69.2)	50,350 (73.1)							
12	82,350 (59.9)	51,200 (65.8)	50,350 (70.4)	50,250 (73.9)						
15	66,350 (53.0)	51,200 (60.7)	50,350 (66.4)	50,250 (70.5)	50,000 (73.5)					
20	48,750 (39.8)	49,150 (51.3)	49,450 (59.3)	49,650 (64.6)	46,450 (68.4)	41,000 (71.3)	34,350 (73.7)			
25	31,500 (20.0)	38,350 (40.3)	38,650 (51.4)	38,850 (58.3)	39,000 (63.2)	35,950 (66.9)	30,150 (69.7)	26,800 (72.2)	23,800 (74.2)	
30		29,000 (25.7)	31,100 (42.6)	31,300 (51.6)	31,500 (57.7)	31,400 (62.2)	26,750 (65.7)	23,800 (68.6)	21,250 (71.0)	18,950 (72.9)
35			25,550 (31.9)	25,750 (44.2)	25,950 (51.9)	26,050 (57.3)	23,700 (61.5)	21,250 (64.9)	18,950 (67.7)	17,000 (69.9)
40			16,000 (15.1)	21,650 (35.6)	21,850 (45.5)	21,950 (52.1)	21,150 (57.1)	19,100 (61.1)	17,100 (64.3)	15,350 (66.9)
45				17,300 (24.4)	18,550 (38.3)	18,650 (46.4)	18,800 (52.5)	17,050 (57.1)	15,550 (60.8)	13,950 (63.7)
50					15,500 (29.6)	15,650 (40.2)	15,750 (47.4)	15,300 (52.9)	14,200 (57.1)	12,700 (60.5)
55					*11,150 (18.6)	13,300 (33.0)	13,400 (41.9)	13,500 (48.3)	13,000 (53.2)	11,650 (57.1)
60						11,450 (24.9)	11,550 (35.7)	11,650 (43.4)	11,700 (49.1)	10,750 (53.8)
65						*6400 (9.8)	10,100 (29.1)	10,200 (38.5)	10,300 (45.1)	9800 (50.1)
70							*8350 (19.5)	8900 (32.3)	9000 (40.3)	9050 (46.1)
75								7800 (24.8)	7900 (34.9)	7950 (41.8)
80								*5200 (13.2)	6950 (28.6)	7000 (37.0)
85									*6100 (20.4)	6200 (31.5)
90										5500 (24.9)
95										*4050 (15.5)
97										*2200 (8.7)
Minimum boom angle (°) for indicated length (no load)										0
Maximum boom length (ft.) at 0° boom angle (no load)										102

NOTE: () Boom angles are in degrees.

*Loads are structurally limited.

#LMI operating code. Refer to LMI manual for operating instructions.

Lifting capacities at zero degree boom angle										
Boom angle	Main boom length in feet									
	31.2	38-A	46-B	54-C	62-D	70-E	78-F	86-G	94-H	
0°	12,450 (27)	9250 (33.8)	6750 (41.8)	5000 (49.8)	3700 (57.8)	2700 (65.8)	1950 (73.8)	1300 (81.8)	700 (89.8)	

NOTE: () Reference radii in feet.

80033204

Load chart

NBT55



31,1 m
(102 ft)



Jib Stowed



2722 kg
(6000 lb)



100%



Over Rear

Radius in feet	#0004									
	Main boom length in feet									
	31.2	38-A	46-B	54-C	62-D	70-E	78-F	86-G	94-H	102
8	108,900 (68.3)									
10	92,250 (64.2)	50,300 (69.2)	49,600 (73.1)							
12	81,250 (59.9)	50,300 (65.8)	49,600 (70.4)	49,600 (73.9)						
15	65,250 (53.0)	50,300 (60.7)	49,600 (66.4)	49,600 (70.5)	49,450 (73.5)					
20	47,650 (39.8)	48,250 (51.3)	48,700 (59.3)	49,050 (64.6)	45,900 (68.4)	40,550 (71.3)	33,950 (73.7)			
25	30,400 (20.0)	37,450 (40.3)	37,900 (51.4)	38,250 (58.3)	38,450 (63.2)	35,500 (66.9)	29,750 (69.7)	26,400 (72.2)	23,450 (74.2)	
30		28,100 (25.7)	30,350 (42.6)	30,700 (51.6)	30,950 (57.7)	30,950 (62.2)	26,350 (65.7)	23,400 (68.6)	20,900 (71.0)	18,650 (72.9)
35			24,800 (31.9)	25,150 (44.2)	25,400 (51.9)	25,600 (57.3)	23,300 (61.5)	20,850 (64.9)	18,600 (67.7)	16,700 (69.9)
40			15,250 (15.1)	21,050 (35.6)	21,300 (45.5)	21,500 (52.1)	20,750 (57.1)	18,700 (61.1)	16,750 (64.3)	15,050 (66.9)
45				16,700 (24.4)	18,000 (38.3)	18,200 (46.4)	18,400 (52.5)	16,650 (57.1)	15,200 (60.8)	13,650 (63.7)
50					14,950 (29.6)	15,200 (40.2)	15,350 (47.4)	14,900 (52.9)	13,850 (57.1)	12,400 (60.5)
55					*10,600 (18.6)	12,850 (33.0)	13,000 (41.9)	13,100 (48.3)	12,650 (53.2)	11,350 (57.1)
60						11,000 (24.9)	11,150 (35.7)	11,250 (43.4)	11,350 (49.1)	10,450 (53.8)
65						*5950 (9.8)	9700 (29.1)	9800 (38.5)	9950 (45.1)	9500 (50.1)
70							*7950 (19.5)	8500 (32.3)	8650 (40.3)	8750 (46.1)
75								7400 (24.8)	7550 (34.9)	7650 (41.8)
80								*4800 (13.2)	6600 (28.6)	6700 (37.0)
85									*5750 (20.4)	5900 (31.5)
90										5200 (24.9)
95										*3750 (15.5)
97										*1900 (8.7)
Minimum boom angle (°) for indicated length (no load)										0
Maximum boom length (ft) at 0° boom angle (no load)										102

NOTE: () Boom angles are in degrees.

*Loads are structurally limited.

#LMI operating code. Refer to LMI manual for operating instructions.

Lifting capacities at zero degree boom angle										
Boom angle	Main boom length in feet									
	31.2	38-A	46-B	54-C	62-D	70-E	78-F	86-G		
0°	11,350 (27)	8350 (33.8)	6000 (41.8)	4400 (49.8)	3150 (57.8)	2250 (65.8)	1550 (73.8)	900 (81.8)		

NOTE: () Reference radii in feet.

80033208

Load chart

NBT55



7,9 m - 13,7 m
(26 ft - 45 ft)



2722 kg
(6000 lb)



100%



360°

Radius in feet	26 ft LENGTH		45 ft LENGTH	
	#0005	#0007	#0009	#0011
	0° OFFSET	30° OFFSET	0° OFFSET	30° OFFSET
40	8500 (71.6)			
45	8400 (69.5)	5950 (75.1)	5700 (72.6)	
50	8050 (67.2)	5900 (72.7)	5650 (70.7)	
55	7450 (64.7)	5750 (70.3)	5600 (68.9)	
60	7000 (62.3)	5550 (67.7)	5350 (66.9)	3400 (74.8)
65	6500 (59.7)	5350 (65.0)	5000 (64.7)	3250 (72.6)
70	6000 (57.0)	5200 (62.3)	4700 (62.6)	3150 (70.3)
75	5650 (54.3)	5050 (59.4)	4400 (60.3)	3050 (68.0)
80	5300 (51.4)	4800 (56.4)	4200 (58.1)	2950 (65.5)
85	5000 (48.4)	4550 (53.2)	3950 (55.7)	2850 (63.0)
90	4450 (45.1)	4350 (49.8)	3750 (53.2)	2800 (60.4)
95	3900 (41.6)	4150 (46.2)	3550 (50.7)	2750 (57.7)
100	3350 (37.8)	3650 (42.1)	3400 (48.0)	2700 (54.9)
105	2900 (33.6)	3100 (37.5)	3250 (45.3)	2650 (51.9)
110	2450 (28.9)	2600 (32.3)	3100 (42.3)	2600 (48.6)
115	2050 (23.3)		2850 (39.0)	2550 (45.1)
120	*1600 (15.7)		2500 (35.4)	2500 (41.2)
125			2150 (31.4)	2400 (36.7)
130			1850 (26.8)	2000 (31.1)
135			1600 (21.3)	
140			*900 (13.2)	
Min. boom angle for indicated length (no load)	10°	30°	10°	30°
Max. boom length at 0° boom angle (no load)	70 ft		70 ft	

NOTE: () Boom angles are in degrees. 80034071

#LMI operating code. Refer to LMI manual for instructions.

*Loads are structurally limited.

Boom extension capacity notes:

- All capacities above the bold line are based on structural strength limitations.
 - 26 ft and 45 ft extension lengths may be used for single line lifting service.
 - Radii listed are for a fully extended boom with the boom extension erected. For main boom lengths less than fully extended, the rated loads are determined by boom angle. Use only the column which corresponds to the boom extension length and offset for which the machine is configured. For boom angles not shown, use the rating of the next lower boom angle.
- Warning:** Operation of this machine with heavier loads than the capacities listed is strictly prohibited. Machine tipping with boom extension occurs rapidly and without advance warning.
- Boom angle is the angle above or below horizontal of the longitudinal axis of the boom base section after lifting rated load.
 - Capacities listed are with outriggers properly extended and vertical jacks set only.

Load chart

NBT55



7,9 m - 13,7 m
(26 ft - 45 ft)



2722 kg
(6000 lb)



100%



Over Rear

Radius in feet	26 ft LENGTH		45 ft LENGTH	
	#0006	#0008	#0010	#0012
	0° OFFSET	30° OFFSET	0° OFFSET	30° OFFSET
40	8500 (71.6)			
45	8400 (69.5)	5950 (75.1)	5700 (72.6)	
50	8050 (67.2)	5900 (72.7)	5650 (70.7)	
55	7450 (64.7)	5750 (70.3)	5600 (68.9)	
60	7000 (62.3)	5550 (67.7)	5350 (66.9)	3400 (74.8)
65	6500 (59.7)	5350 (65.0)	5000 (64.7)	3250 (72.6)
70	6000 (57.0)	5200 (62.3)	4700 (62.6)	3150 (70.3)
75	5650 (54.3)	5050 (59.4)	4400 (60.3)	3050 (68.0)
80	5300 (51.4)	4800 (56.4)	4200 (58.1)	2950 (65.5)
85	5000 (48.4)	4550 (53.2)	3950 (55.7)	2850 (63.0)
90	4450 (45.1)	4350 (49.8)	3750 (53.2)	2800 (60.4)
95	3900 (41.6)	4150 (46.2)	3550 (50.7)	2750 (57.7)
100	3450 (37.8)	3750 (42.2)	3400 (48.0)	2700 (54.9)
105	3050 (33.7)	3250 (37.6)	3250 (45.3)	2650 (51.9)
110	2650 (29.0)	2850 (32.4)	3100 (42.3)	2600 (48.6)
115	2300 (23.4)		2900 (39.1)	2550 (45.1)
120	1600 (15.7)		2550 (35.4)	2500 (41.2)
125			2300 (31.5)	2450 (36.7)
130			2000 (26.9)	2300 (31.2)
135			1750 (21.5)	
140			900 (13.2)	
Min. boom angle for indicated length (no load)	10°	30°	10°	30°
Max. boom length at 0° boom angle (no load)	70 ft		70 ft	

NOTE: () Boom angles are in degrees.

800340Z

#LMI operating code. Refer to LMI manual for instructions.

Boom extension capacity notes:

1. All capacities above the bold line are based on structural strength limitations.
 2. 26 ft and 45 ft extension lengths may be used for single line lifting service.
 3. Radii listed are for a fully extended boom with the boom extension erected. For main boom lengths less than fully extended, the rated loads are determined by boom angle. Use only the column which corresponds to the boom extension length and offset for which the machine is configured. For boom angles not shown, use the rating of the next lower boom angle.
- Warning:** Operation of this machine with heavier loads than the capacities listed is strictly prohibited. Machine tipping with boom extension occurs rapidly and without advance warning.
4. Boom angle is the angle above or below horizontal of the longitudinal axis of the boom base section after lifting rated load.
 5. Capacities listed are with outriggers properly extended and vertical jacks set only.

STERLING CRANE

Load chart

NBT50/55



31,1 m
(102 ft)



1361 kg
(3000 lb)



100%



360°

Radius in feet	#0001									
	Main boom length in feet									
	31.2	38-A	46-B	54-C	62-D	70-E	78-F	86-G	94-H	102
8	100,000 (68.3)									
10	93,350 (64.2)	51,200 (69.2)	50,350 (73.1)							
12	80,950 (59.9)	51,200 (65.8)	50,350 (70.4)	50,250 (73.7)						
15	64,400 (53)	51,200 (60.7)	50,350 (66.4)	50,250 (70.3)	50,000 (73.3)					
20	47,300 (39.8)	47,650 (51.3)	47,950 (59.3)	48,150 (64.5)	46,450 (68.4)	41,000 (71.3)	34,350 (73.7)			
25	31,500 (20)	37,050 (40.3)	37,400 (51.4)	37,600 (58.3)	37,800 (63.2)	35,950 (66.9)	30,150 (69.7)	26,800 (72.2)	23,800 (74.2)	
30		29,000 (25.7)	29,850 (42.6)	30,050 (51.6)	30,250 (57.7)	30,350 (62.2)	26,750 (65.7)	23,800 (68.6)	21,250 (71)	18,950 (72.9)
35			23,600 (31.9)	23,900 (44.2)	24,100 (51.8)	24,250 (57.3)	23,700 (61.5)	21,250 (64.9)	18,950 (67.7)	17,000 (69.9)
40			*16,000 (15.1)	18,700 (35.6)	18,900 (45.4)	19,050 (52)	19,200 (57)	19,100 (61.1)	17,100 (64.3)	15,350 (66.9)
45				15,050 (24.4)	15,250 (38.2)	15,400 (46.4)	15,500 (52.3)	15,650 (57)	15,550 (60.8)	13,950 (63.7)
50					12,550 (29.5)	12,700 (40.1)	12,800 (47.2)	12,900 (52.6)	13,000 (56.9)	12,700 (60.5)
55					10,550 (18.5)	10,700 (33.7)	10,800 (42.3)	10,900 (48.5)	11,000 (53.3)	11,100 (57.3)
60						9050 (24.8)	9150 (36.2)	9250 (43.6)	9350 (49.2)	9400 (53.6)
65						*6400 (9.8)	7800 (29)	7900 (38.2)	8000 (44.7)	8050 (49.8)
70							6650 (19.3)	6750 (32.1)	6850 (39.9)	6900 (45.7)
75								5800 (24.6)	5900 (34.5)	5950 (41.4)
80								5000 (13.2)	5100 (28.3)	5150 (36.6)
85									4350 (20.1)	4450 (31.1)
90										3800 (24.6)
95										3250 (15.3)
97										*2000 (8.7)
Minimum boom angle (°) for indicated length (no load)										0
Maximum boom length (ft) at 0° boom angle (no load)										102

NOTE: () Boom angles are in degrees.

*Loads are structurally limited.

#LMI operating code. Refer to LMI manual for operating instructions.

Lifting capacities at zero degree boom angle										
Boom angle	Main boom length in feet									
	31.2	38-A	46-B	54-C	62-D	70-E	78-F	86-G	94-H	
0°	12,450 (27)	9250 (33.8)	6750 (41.8)	5000 (49.8)	3700 (57.8)	2700 (65.8)	1950 (73.8)	1300 (81.8)	700 (89.8)	

NOTE: () Reference radii in feet.

80025227B

Load chart

NBT50/55



31,1 m
(102 ft)



Jib Stowed



1361 kg
(3000 lb)



100%



360°

Radius in feet	#0002									
	Main boom length in feet									
	31.2	38-A	46-B	54-C	62-D	70-E	78-F	86-G	94-H	102
8	98,900 (68.3)									
10	92,250 (64.2)	50,300 (69.2)	49,600 (73.1)							
12	79,850 (59.9)	50,300 (65.8)	49,600 (70.4)	49,600 (73.7)						
15	63,300 (53)	50,300 (60.7)	49,600 (66.4)	49,600 (70.3)	49,450 (73.3)					
20	46,200 (39.8)	46,750 (51.3)	47,200 (59.3)	47,550 (64.5)	45,900 (68.4)	40,550 (71.3)	33,950 (73.7)			
25	30,400 (20)	36,150 (40.3)	36,650 (51.4)	37,000 (58.3)	37,250 (63.2)	35,500 (66.9)	29,750 (69.7)	26,400 (72.2)	23,450 (74.2)	
30		28,100 (25.7)	29,100 (42.6)	29,450 (51.6)	29,700 (57.7)	29,900 (62.2)	26,350 (65.7)	23,400 (68.6)	20,900 (71)	18,650 (72.9)
35			22,850 (31.9)	23,300 (44.2)	23,550 (51.8)	23,800 (57.3)	23,300 (61.5)	20,850 (64.9)	18,600 (67.7)	16,700 (69.9)
40			*15,250 (15.1)	18,100 (35.6)	18,350 (45.4)	18,600 (52)	18,800 (57)	18,700 (61.1)	16,750 (64.3)	15,050 (66.9)
45				14,450 (24.4)	14,700 (38.2)	14,950 (46.4)	15,100 (52.3)	15,250 (57)	15,200 (60.8)	13,650 (63.7)
50					12,000 (29.5)	12,250 (40.1)	12,400 (47.2)	12,500 (52.6)	12,600 (56.9)	12,400 (60.5)
55					10,000 (18.5)	10,250 (33.7)	10,400 (42.3)	10,500 (48.5)	10,650 (53.3)	10,800 (57.3)
60						8600 (24.8)	8750 (36.2)	8850 (43.6)	9000 (49.2)	9100 (53.6)
65						*5950 (9.8)	7400 (29)	7500 (38.2)	7650 (44.7)	7750 (49.8)
70							6250 (19.3)	6350 (32.1)	6500 (39.9)	6600 (45.7)
75								5400 (24.6)	5550 (34.5)	5650 (41.4)
80								4600 (13.2)	4750 (28.3)	4850 (36.6)
85									4000 (20.1)	4150 (31.1)
90										3500 (24.6)
95										2950 (15.3)
97										*1700 (8.7)
Minimum boom angle (°) for indicated length (no load)										0
Maximum boom length (ft) at 0° boom angle (no load)										102

NOTE: () Boom angles are in degrees.

*Loads are structurally limited.

#LMI operating code. Refer to LMI manual for operating instructions.

Lifting capacities at zero degree boom angle										
Boom angle	Main boom length in feet									
	31.2	38-A	46-B	54-C	62-D	70-E	78-F	86-G		
0°	11,350 (27)	8350 (33.8)	6000 (41.8)	4400 (49.8)	3150 (57.8)	2250 (65.8)	1550 (73.8)	900 (81.8)		

NOTE: () Reference radii in feet.

80026917D

Load chart

NBT50/55



31,1 m
(102 ft)



1361 kg
(3000 lb)



100%



Over Rear

Radius in feet	#0003									
	Main boom length in feet									
	31.2	38-A	46-B	54-C	62-D	70-E	78-F	86-G	94-H	102
8	100,000 (68.3)									
10	93,350 (64.2)	51,200 (69.2)	50,350 (73.1)							
12	80,950 (59.9)	51,200 (65.8)	50,350 (70.4)	50,250 (73.7)						
15	64,400 (53)	51,200 (60.7)	50,350 (66.4)	50,250 (70.3)	50,000 (73.3)					
20	47,300 (39.8)	47,650 (51.3)	47,950 (59.3)	48,150 (64.5)	46,450 (68.4)	41,000 (71.3)	34,350 (73.7)			
25	31,500 (20)	37,050 (40.3)	37,400 (51.4)	37,600 (58.3)	37,800 (63.2)	35,950 (66.9)	30,150 (69.7)	26,800 (72.2)	23,800 (74.2)	
30		29,000 (25.7)	29,850 (42.6)	30,050 (51.6)	30,250 (57.7)	30,350 (62.2)	26,750 (65.7)	23,800 (68.6)	21,250 (71)	18,950 (72.9)
35			24,450 (31.9)	24,700 (44.2)	24,850 (51.8)	25,000 (57.3)	23,700 (61.5)	21,250 (64.9)	18,950 (67.7)	17,000 (69.9)
40			16,000 (15.1)	20,500 (35.6)	20,700 (45.4)	20,850 (52.1)	21,000 (57.1)	19,100 (61.1)	17,100 (64.3)	15,350 (66.9)
45				16,750 (24.4)	16,950 (38.2)	17,100 (46.4)	17,200 (52.4)	17,050 (57.1)	15,550 (60.8)	13,950 (63.7)
50					14,150 (29.5)	14,250 (40.2)	14,400 (47.3)	14,500 (52.8)	14,200 (57.1)	12,700 (60.5)
55					11,050 (18.5)	12,100 (33.0)	12,200 (41.8)	12,300 (48.2)	12,350 (53.2)	11,650 (57.1)
60						10,400 (24.9)	10,550 (36.3)	10,650 (43.7)	10,700 (49.4)	10,750 (53.8)
65						*6400 (9.8)	9100 (29.1)	9200 (38.4)	9300 (44.9)	9350 (50)
70							*7900 (19.4)	8000 (32.2)	8050 (40.1)	8150 (46)
75								6950 (24.7)	7050 (34.7)	7100 (41.6)
80								*5200 (13.2)	6150 (28.4)	6250 (36.8)
85									5400 (20.3)	5450 (31.3)
90										4800 (24.8)
95										*4000 (15.5)
97										*2000 (8.7)
Minimum boom angle (°) for indicated length (no load)										0
Maximum boom length (ft) at 0° boom angle (no load)										102

NOTE: () Boom angles are in degrees.

*Loads are structurally limited.

#LMI operating code. Refer to LMI manual for operating instructions.

Lifting capacities at zero degree boom angle										
Boom angle	Main boom length in feet									
	31.2	38-A	46-B	54-C	62-D	70-E	78-F	86-G	94-H	
0°	12,450 (27)	9250 (33.8)	6750 (41.8)	5000 (49.8)	3700 (57.8)	2700 (65.8)	1950 (73.8)	1300 (81.8)	700 (89.8)	

NOTE: () Reference radii in feet.

80025228D

Load chart

NBT50/55



31,1 m
(102 ft)



Jib Stowed



1361 kg
(3000 lb)



100%



Over Rear

Radius in feet	#0004									
	Main boom length in feet									
	31.2	38-A	46-B	54-C	62-D	70-E	78-F	86-G	94-H	102
8	98,900 (68.3)									
10	92,250 (64.2)	50,300 (69.2)	49,600 (73.1)							
12	79,850 (59.9)	50,300 (65.8)	49,600 (70.4)	49,600 (73.7)						
15	63,300 (53)	50,300 (60.7)	49,600 (66.4)	49,600 (70.3)	49,450 (73.3)					
20	46,200 (39.8)	46,750 (51.3)	47,200 (59.3)	47,550 (64.5)	45,900 (68.4)	40,550 (71.3)	33,950 (73.7)			
25	30,400 (20)	36,150 (40.3)	36,650 (51.4)	37,000 (58.3)	37,250 (63.2)	35,500 (66.9)	29,750 (69.7)	26,400 (72.2)	23,450 (74.2)	
30		28,100 (25.7)	29,100 (42.6)	29,450 (51.6)	29,700 (57.7)	29,900 (62.2)	26,350 (65.7)	23,400 (68.6)	20,900 (71)	18,650 (72.9)
35			23,700 (31.9)	24,100 (44.2)	24,300 (51.8)	24,550 (57.3)	23,300 (61.5)	20,850 (64.9)	18,600 (67.7)	16,700 (69.9)
40			15,250 (15.1)	19,900 (35.6)	20,150 (45.4)	20,400 (52.1)	20,600 (57.1)	18,700 (61.1)	16,750 (64.3)	15,050 (66.9)
45				16,150 (24.4)	16,400 (38.2)	16,650 (46.4)	16,800 (52.4)	16,650 (57.1)	15,200 (60.8)	13,650 (63.7)
50					13,600 (29.5)	13,800 (40.2)	14,000 (47.3)	14,100 (52.8)	13,850 (57.1)	12,400 (60.5)
55					10,500 (18.5)	11,650 (33.0)	11,800 (41.8)	11,900 (48.2)	12,000 (53.2)	11,350 (57.1)
60						9950 (24.9)	10,150 (36.3)	10,250 (43.7)	10,350 (49.4)	10,450 (53.8)
65						*5950 (9.8)	8700 (29.1)	8800 (38.4)	8950 (44.9)	9050 (50)
70							*7500 (19.4)	7600 (32.2)	7700 (40.1)	7850 (46)
75								6550 (24.7)	6700 (34.7)	6800 (41.6)
80								*4800 (13.2)	5800 (28.4)	5950 (36.8)
85									5050 (20.3)	5150 (31.3)
90										4500 (24.8)
95										*3700 (15.5)
97										*1700 (8.7)
Minimum boom angle (°) for indicated length (no load)										0
Maximum boom length (ft) at 0° boom angle (no load)										102

NOTE: () Boom angles are in degrees.

*Loads are structurally limited.

#LMI operating code. Refer to LMI manual for operating instructions.

Lifting capacities at zero degree boom angle										
Boom angle	Main boom length in feet									
	31.2	38-A	46-B	54-C	62-D	70-E	78-F	86-G		
0°	11,350 (27)	8350 (33.8)	6000 (41.8)	4400 (49.8)	3150 (57.8)	2250 (65.8)	1550 (73.8)	900 (81.8)		

NOTE: () Reference radii in feet.

80026918 D

Load chart

NBT50/55



7,9 m - 13,7 m
(26 ft - 45 ft)



1361 kg
(3000 lb)



100%



360°

Radius in feet	26 ft LENGTH		45 ft LENGTH	
	#0005	#0007	#0009	#0011
	0° OFFSET	30° OFFSET	0° OFFSET	30° OFFSET
40	8500 (71.6)			
45	8400 (69.5)	5950 (75.1)	5700 (72.6)	
50	8050 (67.2)	5900 (72.7)	5650 (70.7)	
55	7450 (64.7)	5750 (70.3)	5600 (68.9)	
60	7000 (62.3)	5550 (67.7)	5350 (66.9)	3400 (74.8)
65	6500 (59.7)	5350 (65)	5000 (64.7)	3250 (72.6)
70	6000 (57)	5200 (62.3)	4700 (62.6)	3150 (70)
75	5650 (54.3)	5050 (59.4)	4400 (60.3)	3050 (68)
80	5100 (51.3)	4800 (56.4)	4200 (58.1)	2950 (65.5)
85	4350 (48.1)	4550 (53.2)	3950 (55.7)	2850 (63)
90	3750 (44.8)	4150 (49.7)	3750 (53.2)	2800 (60.4)
95	3150 (41.3)	3550 (46)	3550 (50.7)	2750 (57.7)
100	2700 (37.5)	2950 (41.8)	3400 (48)	2700 (54.9)
105	2250 (33.3)	2450 (37.3)	3050 (45.1)	2650 (51.9)
110	1850 (28.6)	2000 (32.1)	2650 (41.9)	2600 (48.6)
115	1500 (23)		2250 (38.6)	2550 (45.1)
120	1200 (15.5)		1950 (35)	2250 (41.1)
125			1650 (31)	1850 (36.4)
130			1350 (26.4)	1500 (30.9)
135			1100 (20.9)	
140			850 (13.2)	
Min. boom angle for indicated length (no load)	10°	30°	10°	30°
Max. boom length at 0° boom angle (no load)	70 ft		70 ft	

NOTE: () Boom angles are in degrees.

80025504B

#LMI operating code. Refer to LMI manual for instructions

Boom extension capacity notes:

1. All capacities above the bold line are based on structural strength limitations.
 2. 26 ft and 45 ft extension lengths may be used for single line lifting service.
 3. Radii listed are for a fully extended boom with the boom extension erected. For main boom lengths less than fully extended, the rated loads are determined by boom angle. Use only the column which corresponds to the boom extension length and offset for which the machine is configured. For boom angles not shown, use the rating of the next lower boom angle.
- Warning:** Operation of this machine with heavier loads than the capacities listed is strictly prohibited. Machine tipping with boom extension occurs rapidly and without advance warning.
4. Boom angle is the angle above or below horizontal of the longitudinal axis of the boom base section after lifting rated load.
 5. Capacities listed are with outriggers properly extended and vertical jacks set only.

Load chart

NBT50/55



7,9 m - 13,7 m
(26 ft - 45 ft)



1361 kg
(3000 lb)



100%



Over Rear

Radius in feet	26 ft LENGTH		45 ft LENGTH	
	#0006	#0008	#0010	#0012
	0° OFFSET	30° OFFSET	0° OFFSET	30° OFFSET
40	8500 (71.6)			
45	8400 (69.5)	5950 (75.1)	5700 (72.6)	
50	8050 (67.2)	5900 (72.7)	5650 (70.7)	
55	7450 (64.7)	5750 (70.3)	5600 (68.9)	
60	7000 (62.3)	5550 (67.7)	5350 (66.9)	3400 (74.8)
65	6500 (59.7)	5350 (65)	5000 (64.7)	3250 (72.6)
70	6000 (57)	5200 (62.3)	4700 (62.6)	3150 (70)
75	5650 (54.3)	5050 (59.4)	4400 (60.3)	3050 (68)
80	5300 (51.4)	4800 (56.4)	4200 (58.1)	2950 (65.5)
85	5000 (48.4)	4550 (53.2)	3950 (55.7)	2850 (63)
90	4450 (45.1)	4350 (49.8)	3750 (53.2)	2800 (60.4)
95	3900 (41.6)	4150 (46.2)	3550 (50.7)	2750 (57.7)
100	3450 (37.8)	3750 (42.2)	3400 (48)	2700 (54.9)
105	3050 (33.7)	3250 (37.6)	3250 (45.3)	2650 (51.9)
110	2650 (29)	2800 (32.4)	3100 (42.3)	2600 (48.6)
115	2250 (23.4)		2900 (39.1)	2550 (45.1)
120	*1600 (15.7)		2550 (35.4)	2500 (41.2)
125			2300 (31.5)	2450 (36.7)
130			2000 (26.9)	2150 (31.1)
135			1750 (21.5)	
140			900 (13.2)	
Min. boom angle for indicated length (no load)	10°	30°	10°	30°
Max. boom length at 0° boom angle (no load)	70 ft		70 ft	

NOTE: () Boom angles are in degrees.

80025505B

*Loads are structurally limited.

#LMI operating code. Refer to LMI manual for instructions.

Boom extension capacity notes:

- All capacities above the bold line are based on structural strength limitations.
 - 26 ft and 45 ft extension lengths may be used for single line lifting service.
 - Radii listed are for a fully extended boom with the boom extension erected. For main boom lengths less than fully extended, the rated loads are determined by boom angle. Use only the column which corresponds to the boom extension length and offset for which the machine is configured. For boom angles not shown, use the rating of the next lower boom angle.
- Warning:** Operation of this machine with heavier loads than the capacities listed is strictly prohibited. Machine tipping with boom extension occurs rapidly and without advance warning.
- Boom angle is the angle above or below horizontal of the longitudinal axis of the boom base section after lifting rated load.
 - Capacities listed are with outriggers properly extended and vertical jacks set only.

Load chart

NBT50/55



31,1 m
(102 ft)



0 kg
(0 lb)



100%



360°

Radius in feet	#8001									
	Main boom length in feet									
	31.2	38-A	46-B	54-C	62-D	70-E	78-F	86-G	94-H	102
8	100,000 (68.3)									
10	92,900 (64.2)	51,200 (69.2)	50,350 (73.1)							
12	77,450 (59.9)	51,200 (65.8)	50,350 (70.4)	50,250 (73.7)						
15	61,500 (53.0)	51,200 (60.7)	50,350 (66.4)	50,250 (70.3)	50,000 (73.3)					
20	45,100 (39.8)	45,450 (51.3)	45,750 (59.2)	45,950 (64.5)	46,100 (68.4)	41,000 (71.3)	34,350 (73.7)			
25	31,400 (20.0)	34,800 (40.3)	35,100 (51.4)	35,350 (58.3)	35,500 (63.2)	35,650 (66.9)	30,100 (69.7)	26,750 (72.2)	23,800 (74.2)	
30		26,350 (25.7)	26,850 (42.6)	27,200 (51.6)	27,450 (57.7)	27,600 (62.2)	26,750 (65.7)	23,800 (68.6)	21,250 (71.0)	18,950 (72.9)
35			19,850 (31.8)	20,150 (44.2)	20,400 (51.8)	20,550 (57.2)	20,700 (61.4)	20,900 (64.9)	18,950 (67.7)	17,000 (69.9)
40			15,250 (15.1)	15,600 (35.5)	15,800 (45.3)	15,950 (51.9)	16,100 (56.9)	16,250 (60.9)	16,350 (64.2)	15,350 (66.9)
45				12,400 (24.4)	12,600 (38.1)	12,750 (46.3)	12,850 (52.2)	13,000 (56.8)	13,100 (60.5)	13,200 (63.7)
50					10,350 (30.3)	10,500 (40.7)	10,600 (47.6)	10,750 (52.9)	10,850 (57.0)	10,900 (60.5)
55					8500 (18.5)	8650 (33.6)	8800 (42.2)	8900 (48.3)	9000 (53.1)	9050 (57.0)
60						7200 (24.7)	7350 (36.1)	7450 (43.4)	7500 (49.0)	7600 (53.4)
65						6000 (9.8)	6150 (28.9)	6250 (38.1)	6300 (44.5)	6400 (49.5)
70							5150 (19.3)	5250 (31.9)	5350 (39.7)	5400 (45.5)
75								4400 (24.4)	4500 (34.4)	4550 (41.1)
80								3700 (13.1)	3800 (28.1)	3850 (36.3)
85									3150 (20.0)	3250 (30.9)
90										2700 (24.4)
95										2200 (15.1)
97										*2000 (8.7)
Minimum boom angle (°) for indicated length (no load)										0
Maximum boom length (ft.) at 0° boom angle (no load)										102

NOTE: () Boom angles are in degrees.

*Loads are structurally limited.

#LMI operating code. Refer to LMI manual for operating instructions.

Boom angle	Lifting capacities at zero degree boom angle									
	Main boom length in feet									
	31.2	38-A	46-B	54-C	62-D	70-E	78-F	86-G	94-H	
0°	12,450 (27)	9250 (33.8)	6750 (41.8)	5000 (49.8)	3700 (57.8)	2700 (65.8)	1950 (73.8)	1300 (81.8)	700 (89.8)	

NOTE: () Reference radii in feet.

80035269

STERLING CRANE

Load chart

NBT50/55



31,1 m
(102 ft)



Jib Stowed



0 kg
(0 lb)



100%



360°

Radius in feet	#8002									
	Main boom length in feet									
	31.2	38-A	46-B	54-C	62-D	70-E	78-F	86-G	94-H	102
8	98,900 (68.3)									
10	91,800 (64.2)	50,300 (69.2)	49,600 (73.1)							
12	76,350 (59.9)	50,300 (65.8)	49,600 (70.4)	49,650 (73.7)						
15	60,400 (53.0)	50,300 (60.7)	49,600 (66.4)	49,650 (70.3)	49,450 (73.3)					
20	44,000 (39.8)	44,550 (51.3)	45,000 (59.2)	45,350 (64.5)	45,550 (68.4)	40,550 (71.3)	33,950 (73.7)			
25	30,300 (20.0)	33,900 (40.3)	34,350 (51.4)	34,750 (58.3)	34,950 (63.2)	35,200 (66.9)	29,700 (69.7)	26,350 (72.2)	23,450 (74.2)	
30		25,450 (25.7)	26,100 (42.6)	26,600 (51.6)	26,900 (57.7)	27,150 (62.2)	26,350 (65.7)	23,400 (68.6)	20,900 (71.0)	18,650 (72.9)
35			19,100 (31.8)	19,550 (44.2)	19,850 (51.8)	20,100 (57.2)	20,300 (61.4)	20,500 (64.9)	18,600 (67.7)	16,700 (69.9)
40			14,500 (15.1)	15,000 (35.5)	15,250 (45.3)	15,500 (51.9)	15,700 (56.9)	15,850 (60.9)	16,000 (64.2)	15,050 (66.9)
45				11,800 (24.4)	12,050 (38.1)	12,300 (46.3)	12,450 (52.2)	12,600 (56.8)	12,750 (60.5)	12,900 (63.7)
50					9800 (30.3)	10,050 (40.7)	10,200 (47.6)	10,350 (52.9)	10,500 (57.0)	10,600 (60.5)
55					7950 (18.5)	8200 (33.6)	8400 (42.2)	8500 (48.3)	8650 (53.1)	8750 (57.0)
60						6750 (24.7)	6950 (36.1)	7050 (43.4)	7150 (49.0)	7300 (53.4)
65						5550 (9.8)	5750 (28.9)	5850 (38.1)	5950 (44.5)	6100 (49.5)
70							4750 (19.3)	4850 (31.9)	5000 (39.7)	5100 (45.5)
75								4000 (24.4)	4150 (34.4)	4250 (41.1)
80								3300 (13.1)	3450 (28.1)	3550 (36.3)
85									2800 (20.0)	2950 (30.9)
90										2400 (24.4)
95										1900 (15.1)
97										*1700 (8.7)
Minimum boom angle (°) for indicated length (no load)										0
Maximum boom length (ft) at 0° boom angle (no load)										102

NOTE: () Boom angles are in degrees.

*Loads are structurally limited.

#LMI operating code. Refer to LMI manual for operating instructions.

Boom angle	Lifting capacities at zero degree boom angle									
	Main boom length in feet									
	31.2	38-A	46-B	54-C	62-D	70-E	78-F	86-G		
0°	11,350 (27)	8350 (33.8)	6000 (41.8)	4400 (49.8)	3150 (57.8)	2250 (65.8)	1550 (73.8)	900 (81.8)		

NOTE: () Reference radii in feet.

80035270

Load chart

NBT50/55



31,1 m
(102 ft)



0 kg
(0 lb)



100%



Over Rear

Radius in feet	#8003									
	Main boom length in feet									
	31.2	38-A	46-B	54-C	62-D	70-E	78-F	86-G	94-H	102
8	100,000 (68.3)									
10	92,900 (64.2)	51,200 (69.2)	50,350 (73.1)							
12	77,450 (59.9)	51,200 (65.8)	50,350 (70.4)	50,250 (73.7)						
15	61,500 (53.0)	51,200 (60.7)	50,350 (66.4)	50,250 (70.3)	50,000 (73.3)					
20	45,100 (39.8)	45,450 (51.3)	45,750 (59.2)	45,950 (64.5)	46,100 (68.4)	41,000 (71.3)	34,350 (73.7)			
25	31,400 (20.0)	34,800 (40.3)	35,100 (51.4)	35,350 (58.3)	35,500 (63.2)	35,650 (66.9)	30,100 (69.7)	26,750 (72.2)	23,800 (74.2)	
30		27,600 (25.7)	27,950 (42.6)	28,150 (51.6)	28,350 (57.7)	28,450 (62.2)	26,750 (65.7)	23,800 (68.6)	21,250 (71.0)	18,950 (72.9)
35			22,200 (31.8)	22,400 (44.2)	22,600 (51.8)	22,750 (57.2)	22,900 (61.5)	21,250 (64.9)	18,950 (67.7)	17,000 (69.9)
40			*15,950 (15.1)	17,750 (35.6)	17,950 (45.4)	18,100 (52.0)	18,250 (57.0)	18,350 (61.1)	17,100 (64.3)	15,350 (66.9)
45				14,350 (24.4)	14,550 (38.2)	14,700 (46.4)	14,800 (52.3)	14,950 (56.9)	15,050 (60.7)	13,950 (63.7)
50					12,050 (29.5)	12,200 (40.1)	12,300 (47.2)	12,400 (52.6)	12,500 (56.9)	12,550 (60.5)
55					10,150 (18.5)	10,350 (33.7)	10,450 (42.3)	10,550 (48.5)	10,650 (53.3)	10,700 (57.3)
60						8750 (24.8)	8850 (36.2)	8950 (43.6)	8050 (49.2)	9100 (53.6)
65						*6400 (9.8)	7600 (29.0)	7650 (38.2)	7750 (44.7)	7800 (49.8)
70							6500 (19.4)	6600 (32.1)	6650 (39.9)	6750 (45.7)
75								5650 (24.6)	5750 (34.6)	5800 (41.4)
80								4850 (13.2)	4950 (28.3)	5050 (36.6)
85									4300 (20.2)	4350 (31.1)
90										3750 (24.6)
95										3200 (15.3)
97										*2000 (8.7)
Minimum boom angle (°) for indicated length (no load)										0
Maximum boom length (ft.) at 0° boom angle (no load)										102

NOTE: () Boom angles are in degrees.

*Loads are structurally limited.

#LMI operating code. Refer to LMI manual for operating instructions.

Lifting capacities at zero degree boom angle										
Boom angle	Main boom length in feet									
	31.2	38-A	46-B	54-C	62-D	70-E	78-F	86-G	94-H	
0°	12,450 (27)	9250 (33.8)	6750 (41.8)	5000 (49.8)	3700 (57.8)	2700 (65.8)	1950 (73.8)	1300 (81.8)	700 (89.8)	

NOTE: () Reference radii in feet.

80035273

Load chart

NBT50/55



31,1 m
(102 ft)



Jib Stowed



0 kg
(0 lb)



100%



Over Rear

Radius in feet	#8004									
	Main boom length in feet									
	31.2	38-A	46-B	54-C	62-D	70-E	78-F	86-G	94-H	102
8	98,900 (68.3)									
10	91,800 (64.2)	50,300 (69.2)	49,600 (73.1)							
12	76,350 (59.9)	50,300 (65.8)	49,600 (70.4)	49,650 (73.7)						
15	60,400 (53.0)	50,300 (60.7)	49,600 (66.4)	49,650 (70.3)	49,450 (73.3)					
20	44,000 (39.8)	44,550 (51.3)	45,000 (59.2)	45,350 (64.5)	45,550 (68.4)	40,550 (71.3)	33,950 (73.7)			
25	30,300 (20.0)	33,900 (40.3)	34,350 (51.4)	34,750 (58.3)	34,950 (63.2)	35,200 (66.9)	29,700 (69.7)	26,350 (72.2)	23,450 (74.2)	
30		26,700 (25.7)	27,200 (42.6)	27,550 (51.6)	27,800 (57.7)	28,000 (62.2)	26,350 (65.7)	23,400 (68.6)	20,900 (71.0)	18,650 (72.9)
35			21,450 (31.8)	21,800 (44.2)	22,050 (51.8)	22,300 (57.2)	22,500 (61.5)	20,850 (64.9)	18,600 (67.7)	16,700 (69.9)
40			*15,200 (15.1)	17,150 (35.6)	17,400 (45.4)	17,650 (52.0)	17,850 (57.0)	17,950 (61.1)	16,750 (64.3)	15,050 (66.9)
45				13,750 (24.4)	14,000 (38.2)	14,250 (46.4)	14,400 (52.3)	14,550 (56.9)	14,700 (60.7)	13,650 (63.7)
50					11,500 (29.5)	11,750 (40.1)	11,900 (47.2)	12,000 (52.6)	12,150 (56.9)	12,250 (60.5)
55					9600 (18.5)	9900 (33.7)	10,050 (42.3)	10,150 (48.5)	10,300 (53.3)	10,400 (57.3)
60						8300 (24.8)	8450 (36.2)	8550 (43.6)	7700 (49.2)	8800 (53.6)
65						*5950 (9.8)	7200 (29.0)	7250 (38.2)	7400 (44.7)	7500 (49.8)
70							6100 (19.4)	6200 (32.1)	6300 (39.9)	6450 (45.7)
75								5250 (24.6)	5400 (34.6)	5500 (41.4)
80								4450 (13.2)	4600 (28.3)	4750 (36.6)
85									3950 (20.2)	4050 (31.1)
90										3450 (24.6)
95										2900 (15.3)
97										*1700 (8.7)
Minimum boom angle (°) for indicated length (no load)										0
Maximum boom length (ft) at 0° boom angle (no load)										102

NOTE: () Boom angles are in degrees.

*Loads are structurally limited.

#LMI operating code. Refer to LMI manual for operating instructions.

Lifting capacities at zero degree boom angle										
Boom angle	Main boom length in feet									
	31.2	38-A	46-B	54-C	62-D	70-E	78-F	86-G		
0°	11,350 (27)	8350 (33.8)	6000 (41.8)	4400 (49.8)	3150 (57.8)	2250 (65.8)	1550 (73.8)	900 (81.8)		

NOTE: () Reference radii in feet.

80035274

Load chart

NBT50/55



7,9 m - 13,7 m
(26 ft - 45 ft)



0 kg
(0 lb)



100%



360°

Radius in feet	26 ft LENGTH		45 ft LENGTH	
	#8005	#8007	#8009	#8011
	0° OFFSET	30° OFFSET	0° OFFSET	30° OFFSET
40	8500 (71.6)			
45	8400 (69.5)	5950 (75.1)	5700 (72.6)	
50	8050 (67.2)	5900 (72.7)	5650 (70.7)	
55	7450 (64.7)	5750 (70.3)	5600 (68.9)	
60	7000 (62.3)	5550 (67.7)	5350 (66.9)	3400 (74.8)
65	6400 (59.8)	5350 (65.0)	5000 (64.7)	3250 (72.6)
70	5350 (57.0)	5200 (62.3)	4700 (62.6)	3150 (70.3)
75	4500 (54.0)	5050 (59.4)	4,400 (60.3)	3050 (68.0)
80	3750 (51.0)	4350 (56.2)	4200 (58.1)	2950 (65.5)
85	3150 (47.9)	3650 (52.8)	3950 (55.7)	2850 (63.0)
90	2600 (44.6)	3000 (49.3)	3400 (53.2)	2800 (60.4)
95	2100 (41.1)	2450 (45.5)	2900 (50.4)	2750 (57.7)
100	1650 (37.3)	1950 (41.4)	2,450 (47.6)	2700 (54.9)
105	1300 (33.2)	1500 (36.9)	2050 (44.6)	2650 (51.9)
110	950 (28.6)	1100 (31.7)	1700 (41.5)	2200 (48.4)
115	650 (23.1)		1400 (38.2)	1800 (44.7)
120			1100 (34.6)	1450 (40.6)
125			850 (30.7)	1100 (36.0)
130			600 (26.2)	750 (30.6)
Min. boom angle for indicated length (no load)	18°	30°	22°	30°
Max. boom length at 0° boom angle (no load)	70 ft		70 ft	

NOTE: () Boom angles are in degrees.

80035283

#LMI operating code. Refer to LMI manual for instructions.

Boom extension capacity notes:

1. All capacities above the bold line are based on structural strength limitations.
 2. 26 ft and 45 ft extension lengths may be used for single line lifting service.
 3. Radii listed are for a fully extended boom with the boom extension erected. For main boom lengths less than fully extended, the rated loads are determined by boom angle. Use only the column which corresponds to the boom extension length and offset for which the machine is configured. For boom angles not shown, use the rating of the next lower boom angle.
- Warning:** Operation of this machine with heavier loads than the capacities listed is strictly prohibited. Machine tipping with boom extension occurs rapidly and without advance warning.
4. Boom angle is the angle above or below horizontal of the longitudinal axis of the boom base section after lifting rated load.
 5. Capacities listed are with outriggers properly extended and vertical jacks set only.

Load chart

NBT50/55



7,9 m - 13,7 m
(26 ft - 45 ft)



0 kg
(0 lb)



100%



Over Rear

Radius in feet	26 ft LENGTH		45 ft LENGTH	
	#8006	#8008	#8010	#8012
	0° OFFSET	30° OFFSET	0° OFFSET	30° OFFSET
40	8500 (71.6)			
45	8400 (69.5)	5950 (75.1)	5700 (72.6)	
50	8050 (67.2)	5900 (72.7)	5650 (70.7)	
55	7450 (64.7)	5750 (70.3)	5600 (68.9)	
60	7000 (62.3)	5550 (67.7)	5350 (66.9)	3400 (74.8)
65	6500 (59.7)	5350 (65.0)	5000 (64.7)	3250 (72.6)
70	6000 (57.0)	5200 (62.3)	4700 (62.6)	3150 (70.3)
75	5650 (54.3)	5050 (59.4)	4400 (60.3)	3050 (68.0)
80	4950 (51.5)	4800 (56.4)	4200 (58.1)	2950 (65.5)
85	4250 (48.3)	4550 (53.2)	3950 (55.7)	2850 (63.0)
90	3650 (45.0)	4050 (49.7)	3750 (53.2)	2800 (60.4)
95	3100 (41.5)	3450 (45.9)	3550 (50.7)	2750 (57.7)
100	2650 (37.8)	2900 (41.8)	3400 (48.0)	2700 (54.9)
105	2200 (33.6)	2400 (37.3)	3000 (45.3)	2650 (51.9)
110	1850 (29.0)	1950 (32.0)	2600 (42.2)	2600 (48.6)
115	1500 (23.6)		2250 (38.8)	2550 (45.1)
120	1150 (16.3)		1900 (35.2)	2200 (41.0)
125			1600 (31.3)	1850 (36.4)
130			1350 (26.8)	1500 (30.9)
135			1100 (21.5)	
140			850 (14.1)	
Min. boom angle for indicated length (no load)	10°	30°	10°	30°
Max. boom length at 0° boom angle (no load)	70 ft		70 ft	

NOTE: () Boom angles are in degrees. 80035285

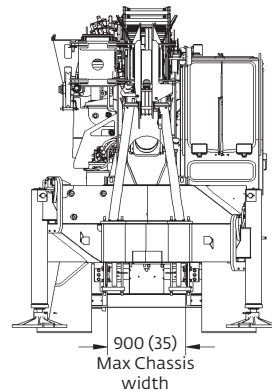
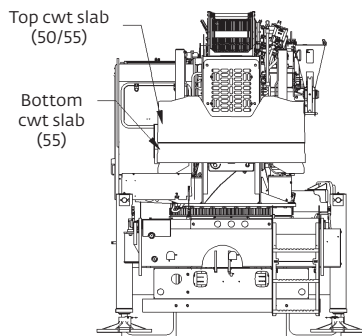
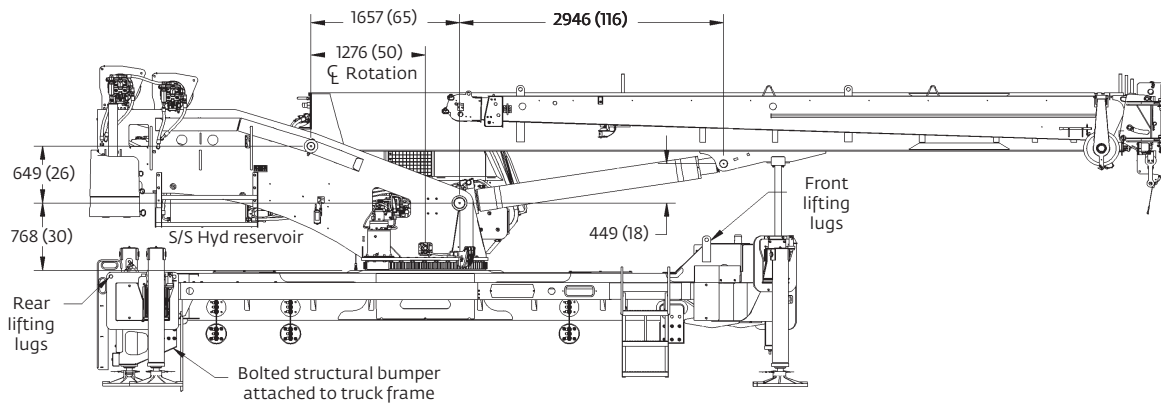
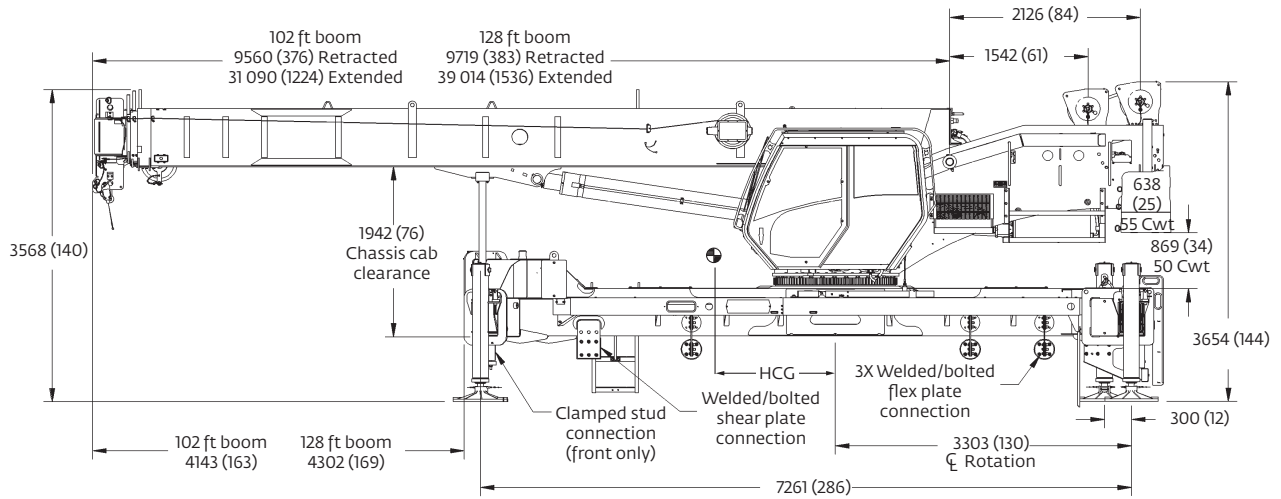
#LMI operating code. Refer to LMI manual for instructions.

Boom extension capacity notes:

- All capacities above the bold line are based on structural strength limitations.
 - 26 ft and 45 ft extension lengths may be used for single line lifting service.
 - Radii listed are for a fully extended boom with the boom extension erected. For main boom lengths less than fully extended, the rated loads are determined by boom angle. Use only the column which corresponds to the boom extension length and offset for which the machine is configured. For boom angles not shown, use the rating of the next lower boom angle.
- Warning:** Operation of this machine with heavier loads than the capacities listed is strictly prohibited. Machine tipping with boom extension occurs rapidly and without advance warning.
- Boom angle is the angle above or below horizontal of the longitudinal axis of the boom base section after lifting rated load.
 - Capacities listed are with outriggers properly extended and vertical jacks set only.

STERLING CRANE

Dimensions



Weights

Weight and Center of Gravity (CG) estimates (see notes)				
Standard NBT Configuration	Horizontal CG mm (in)	Weight with fluids kg (lb)	CWT Pinned (# slabs)	CWT Stowed (# slabs)
NBT55102	348 (13.7)	20 789 (45,832)	2	0
NBT55102	803 (31.6)	20 789 (45,832)	1	1
NBT55102	1267 (49.9)	20 789 (45,832)	0	2
NBT50102	616 (24.3)	19 421 (42,816)	1	0
NBT50102	1113 (43.8)	19 421 (42,816)	0	1
NBT50102	1011 (39.8)	17,710 (39,044)	0	0
NBT55128	486 (19.1)	21 837 (48,142)	2	0
NBT55128	919 (36.2)	21 837 (48,142)	1	1
NBT55128	1361 (53.6)	21 837 (48,142)	0	2
NBT50128	749 (29.5)	20 469 (45,126)	1	0
NBT50128	1221 (48.0)	20 469 (45,126)	0	1
NBT50128	1134 (44.6)	18 758 (41,354)	0	0

Weight and CG Estimate Notes:

- Information provided is for reference only.
- Weight and CG data is applicable for a standard machine:
 - 102 ft or 128 ft boom
 - 2/3 part lineblock included
 - Main hoist only (auxiliary hoist IPO CWT present)
 - STD decking with fixed access ladder
 - No extension equipped
 - No optional turret access step
 - No auxiliary nose or optional hook blocks.
- All counterweight configurations are shown in table
 - Pinned = attached to cylinders and turret (in use)
 - Stowed = attached to torsion box (not in use)
 - “2” = Top and bottom slab(s)
 - “1” = Top or bottom slab only
 - “0” = No slab pinned and/or stowed

If both stowed and pinned columns are “0” the counterweight is physically removed from the machine. IPO counterweight is also assumed removed in this case (if no auxiliary hoist is equipped).

For more information about mounting configuration options, please contact the factory or your local National Crane dealer.