

STERLING CRANE



TRANSPORTATION SPECS - Crawler Cranes

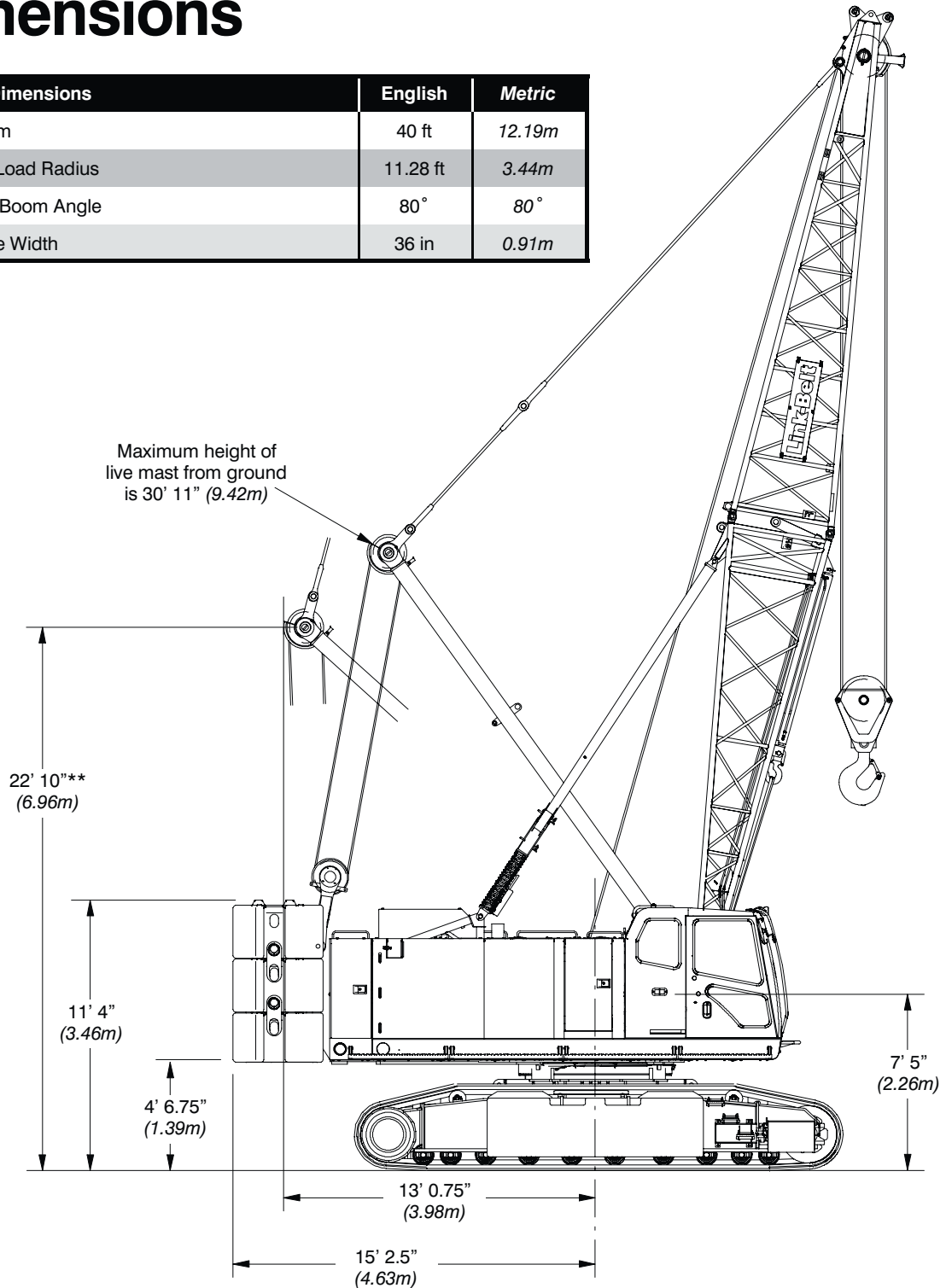
LINK-BELT MODEL 218HSL - 110 TON CAPACITY

<u>COMPONENT WEIGHTS</u>	<u>LBS.</u>	<u>KGS.</u>			
Complete Crane c/w 40', full Cwt and Block	190,058	86,210	<u>BOOM 60" (1.52m) X 50"</u> <u>(1.72m) Min 40' to Max 230'</u> OD 65"x55"		
House Carbody, Butt & Gantry -41' x 11'6" x 12'8"	67,250	30,504	20' Butt Section	2,111	958
Counterweights Upper			10' Insert c/w pendants 1Pc	635	288
1 Slab 11'10"x3'10"x6'6"	25,260	11,458	20' Insert c/w pendant 2Pc ea	1,085	492
2 Wings 4'7"x3'10"x30" 9,410lbs each	18,820	8,537	30' Insert c/w pendant 2Pc ea	1,534	696
2 Wings 4'7"x3'10"x30" 9,370lbs each	18,740	8,500	40' Insert c/w pendant 2Pc ea	1,978	897
Counterweights Lower			20' Tip Section	2,108	956
2 side Frame 9'1"x16"x30" 11,100lbs each	22,200	10,070	5' Auxiliary Tip Extension 6"x25"x3'7"	720	327
Total Counterweight	85,020	38,565	<u>JIB/LUFFING JIB MIN 30'</u> <u>TO MAX 75'</u> OD 3.45"x26.5"		
Tracks 36" shoes 20'7"x3'x3'8" each	19,450	8,822	15' Butt Section c/w mast	1,106	502
			15' Insert c/w pendants 3Pcs each	330	150
			15' Tip Section	604	274
<u>ADDITIONAL INFORMATION</u>					
80 Ton 4 Sheave 5'10"x15"x21"	1,520	689			
15 Ton Ball 41"x18"	767	348			
Third Drum Without rope	1,850	839			
Third Drum rope dimensions 3/4" x 550'	572	259			
Main Line Rope - 1"x700'	1,295	587			

STERLING CRANE

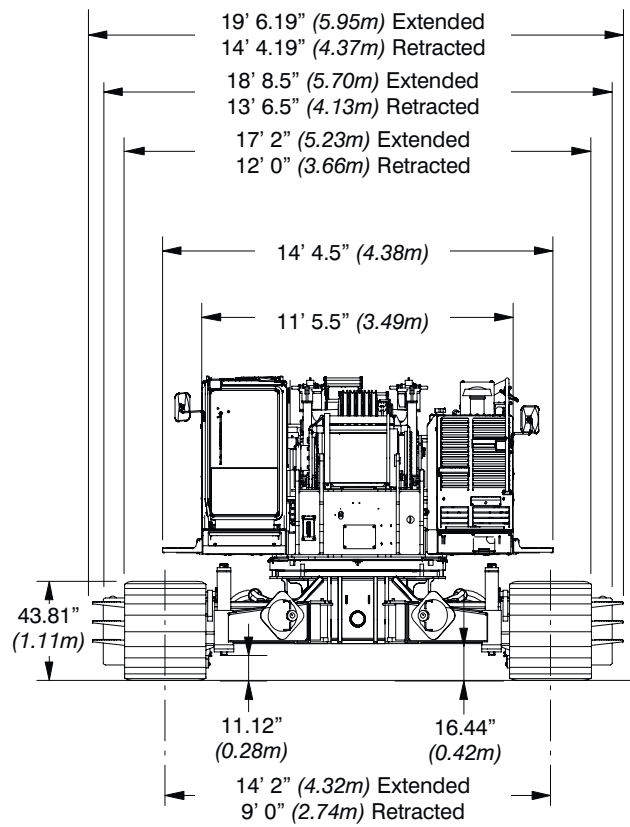
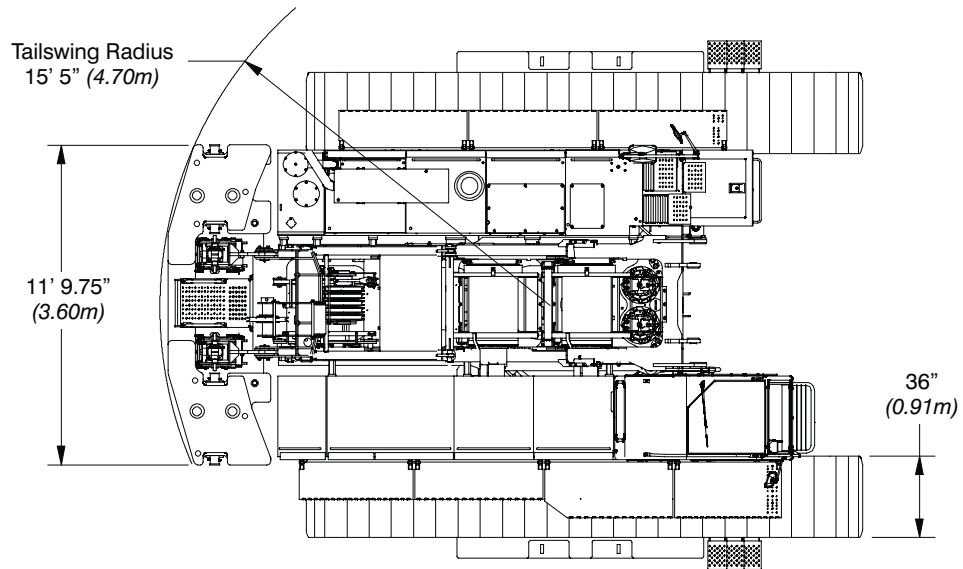
Dimensions

General Dimensions	English	Metric
Basic Boom	40 ft	12.19m
Minimum Load Radius	11.28 ft	3.44m
Maximum Boom Angle	80°	80°
Track Shoe Width	36 in	0.91m



Note: ***@ Maximum boom angle (80°) with maximum boom [240 ft (73.15m)], maximum rotation radius occurs.

STERLING CRANE

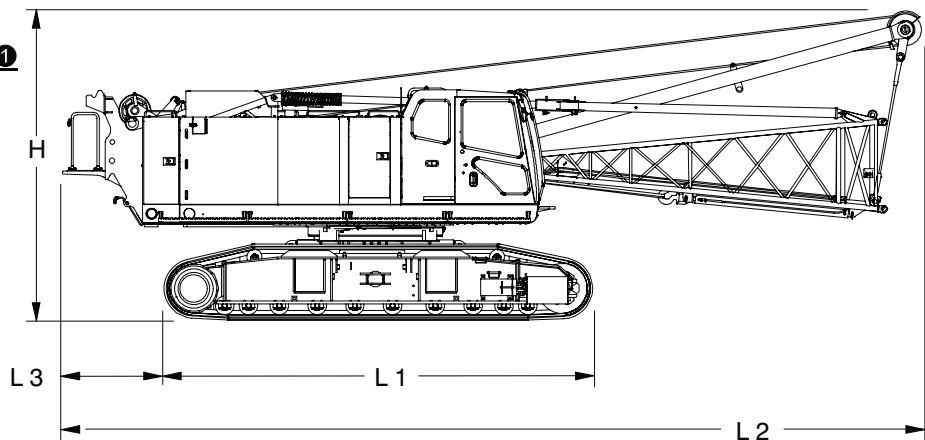


STERLING CRANE

Base Crane

Base Crane ①

Length 1	20 ft 6.25 in	(6.25m)
Length 2	41 ft 1.31 in	(12.53m)
Length 3	4 ft 10.25 in	(1.48m)
Height	14 ft 10 in	(4.52m)
Weight:		
Tube Boom	99,508 lb	(45 136kg)
Angle Boom	100,693 lb	(45 674kg)

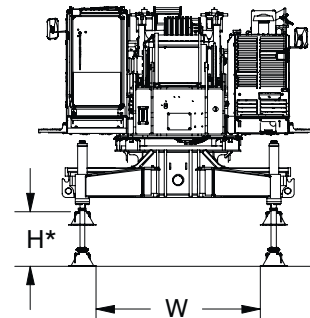
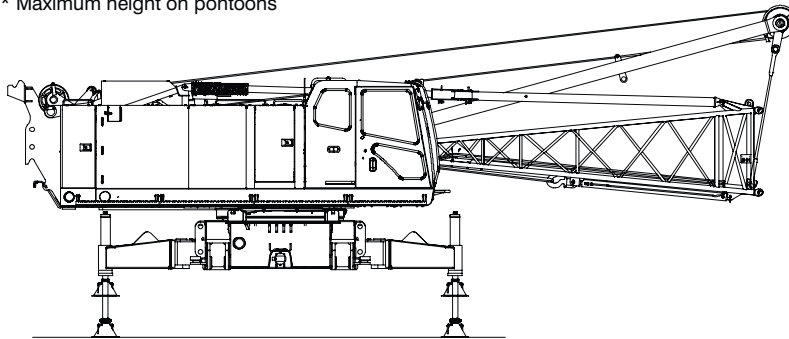


Base Crane w/ Optional Jacks ①

Width	8 ft 5.33 in	(2.57m)
Height*	35.34 in	(0.90m)
Weight	67,250 lb	(30504kg)

* Maximum height on pontoons

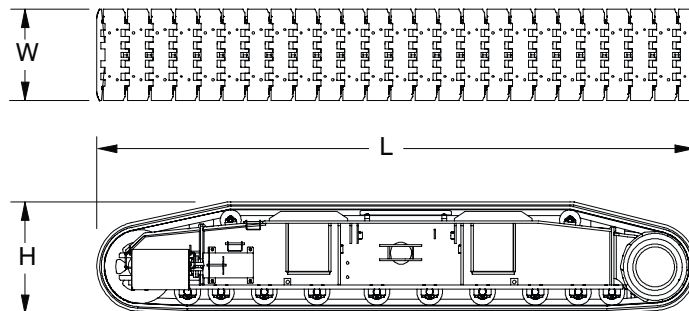
TRANSPORTATION ALERT !!
110-4-2017 HAS NO LIFTING JACKS



Side Frames

Side Frames ②

Length	20 ft 6.25 in	(6.25m)
Width	36 in	(0.91m)
Height	43.81 in	(1.11m)
Weight	19,450 lb	(8 822kg)



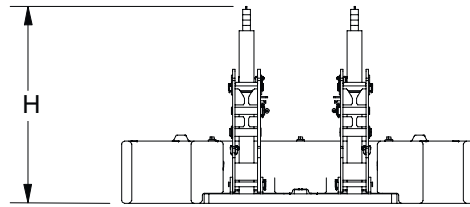
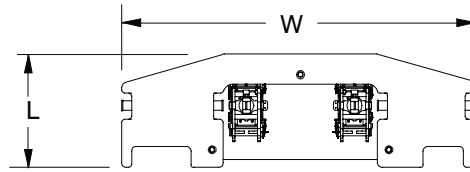
Number inside black circle "①" = # of components

STERLING CRANE

Upper Counterweights

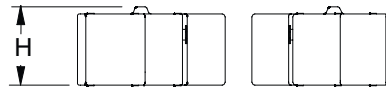
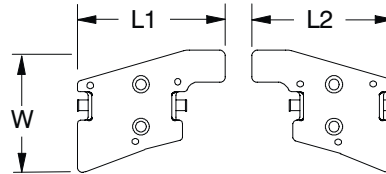
"A" Slab Counterweight ①

Length	45.44 in	(1.15m)
Width	11 ft 9.75 in	(3.60m)
Height	6 ft 6 in	(2.01m)
Weight	25,260 lb	(11 458kg)



"B" Wing Counterweights ②

Length 1	55.12 in	(1.40m)
Length 2	53 in	(1.35m)
Width	45.44 in	(1.15m)
Height	29.44 in	(0.75m)
Weight	9,370 lb	(4 250kg)



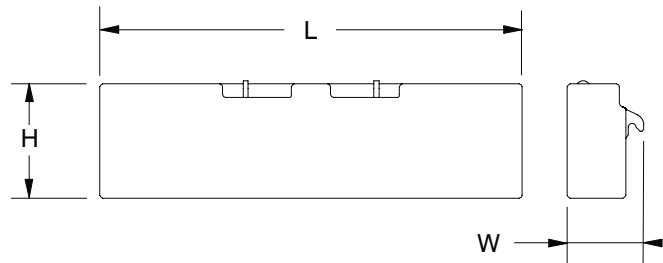
"C" Wing Counterweights ②

Length 1	55.12 in	(1.40m)
Length 2	53 in	(1.35m)
Width	45.44 in	(1.15m)
Height	29.44 in	(0.75m)
Weight	9,410 lb	(4 268kg)

Lower Counterweights

Side Frame Counterweights ②

Length	9 ft 1 in	(2.77m)
Width	15.16 in	(0.39m)
Height	29.50 in	(0.75m)
Weight	11,100 lb	(5 035kg)



Number inside black circle "①" = # of components

STERLING CRANE

Boom/Luffing Boom

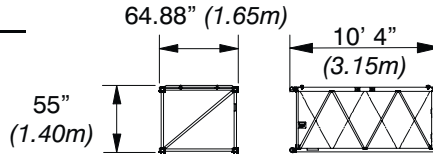
60 in (1.52m) x 50 in (1.27m)

Tube Boom/Luffing Boom

Extensions

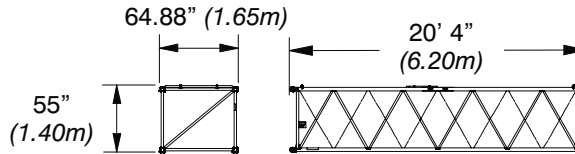
10 ft (3.05m) Extension

Weight: 635 lb (288kg)



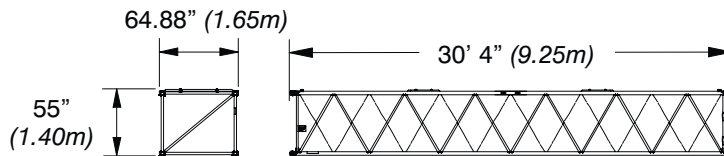
20 ft (6.10m) Extension

Weight: 1,085 lb (492kg)



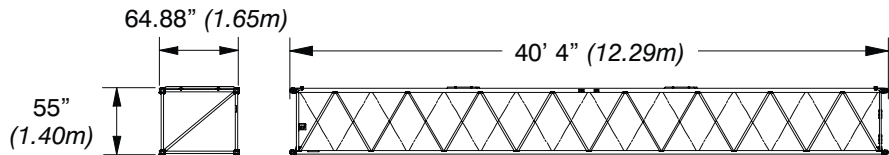
30 ft (9.14m) Extension

Weight: 1,534 lb (696kg)



40 ft (12.19m) Extension

Weight: 1,978 lb (897kg)



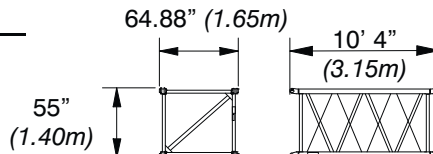
60 in (1.52m) x 54 in (1.37m)

Angle Boom/Luffing Boom

Extensions

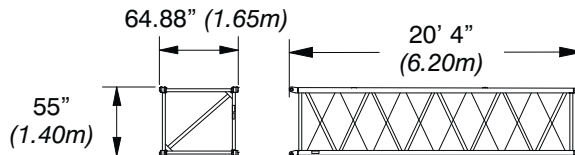
10 ft (3.05m) Extension

Weight: 1,281 lb (581kg)



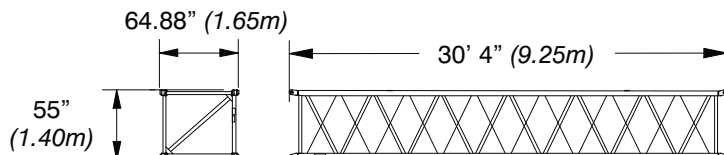
20 ft (6.10m) Extension

Weight: 2,330 lb (1 057kg)



30 ft (9.14m) Extension

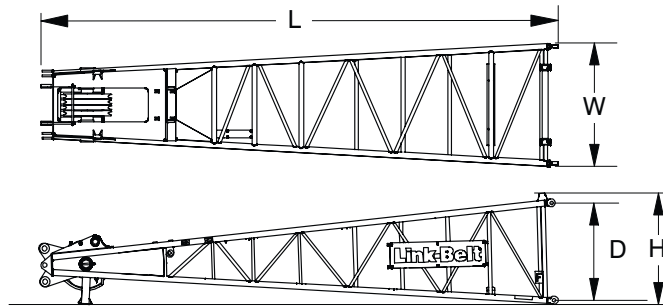
Weight: 3,126 lb (1 418kg)



STERLING CRANE

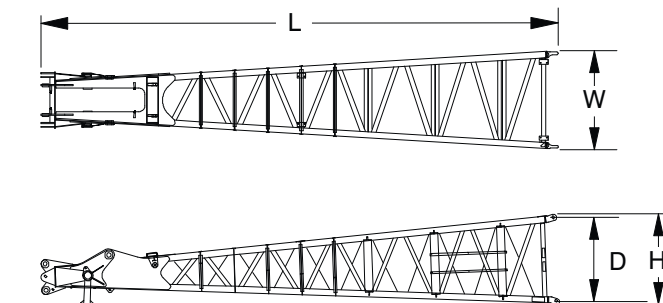
20 ft (6.10m) Tube Boom Top Section ①

Length	22 ft 2 in	(6.76m)
Width	63.12 in	(1.60m)
Deep	50 in	(1.27m)
Height	57 in	(1.45m)
Weight	2,108 lb	(956kg)



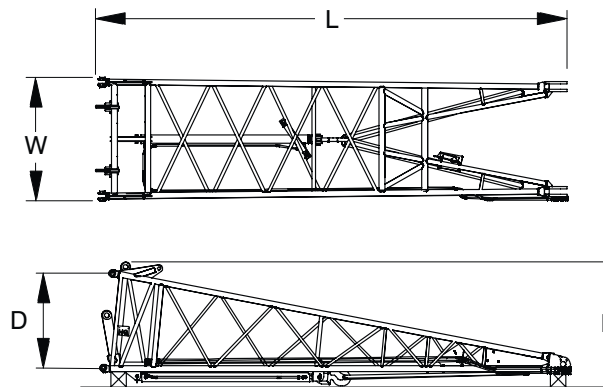
25 ft (7.62m) Angle Boom Top Section ①

Length	27 ft 8.25 in	(2.65m)
Width	61.87 in	(1.57m)
Deep	54 in	(1.37m)
Height	58 in	(1.47m)
Weight	3,835 lb	(1 740kg)



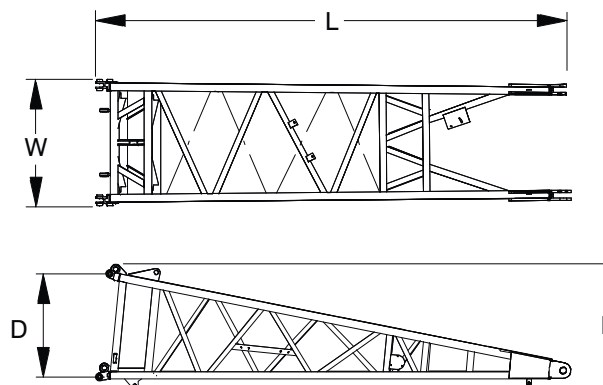
20 ft (6.10m) Tube Boom Base Section ①

Length	20 ft 7.5 in	(6.29m)
Width	64.88 in	(1.65m)
Deep	50 in	(1.27m)
Height	65.50 in	(1.66m)
Weight		
w/o Quick Draw	1,737 lb	(788kg)
w/ Quick Draw	2,111 lb	(958kg)



20 ft (6.10m) Angle Boom Base Section ①

Length	20 ft 7.5 in	(6.29m)
Width	65.50 in	(1.66m)
Deep	54 in	(1.37m)
Height	65 in	(1.65m)
Weight	3,174 lb	(1 440kg)

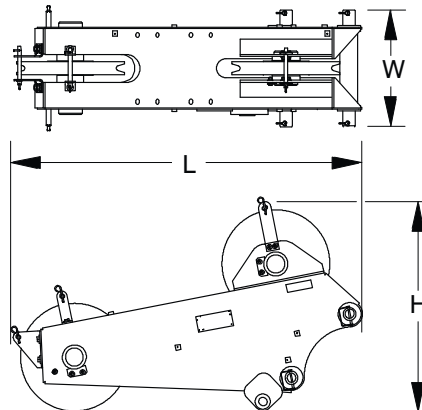


Number inside black circle "①" = # of components
* - Optional equipment

STERLING CRANE

5 ft (1.52m) Auxiliary Tip Extension* ①

Length	70.35 in	(1.79m)
Width	24.50 in	(0.62m)
Height	42.91 in	(1.09m)
Weight	720 lb	(327kg)

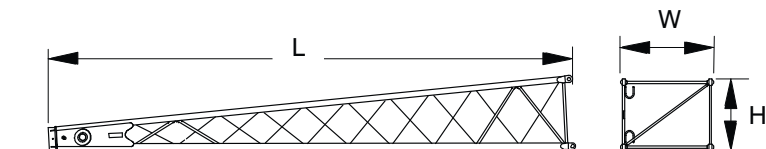


Jib/Luffing Jib

15 ft (4.57m) Jib Top Section* ①

Length	16 ft 1.50 in	(4.91m)
Width	34.50 in	(0.88m)
Height	26.50 in	(0.67m)
Weight†	604 lb	(274kg)

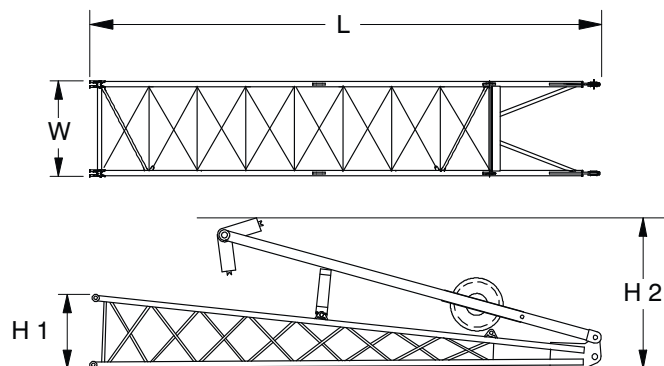
† Weight includes pendants and hardware.



15 ft (4.57m) Jib Base Section* ①

Length	15 ft 3.50 in	(4.66m)
Width	34.50 in	(0.88m)
Height 1	26.50 in	(0.67m)
Height 2	54.50 in	(1.38m)
Weight†	1,106 lb	(502kg)

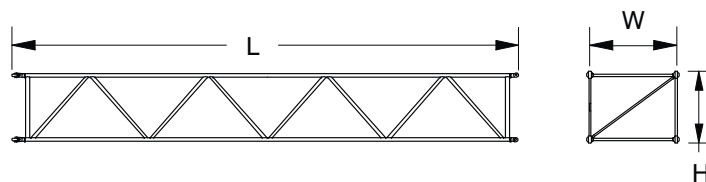
† Weight includes pins, basic frontstay & backstay pendants, and hardware.



15 ft (4.57m) Jib Extension* ①

Length	15 ft 2.50 in	(4.64m)
Width	34.50 in	(0.88m)
Height	26.50 in	(0.67m)
Weight†	330 lb	(150kg)

† Weights includes pins, pendants, and hardware.



Number inside black circle "①" = # of components

* - Optional equipment

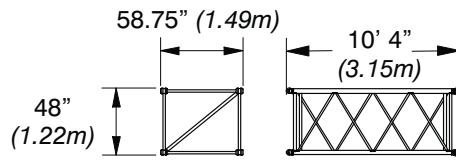
STERLING CRANE

Luffing Jib Extensions*

Weights Include Pendants and Hardware

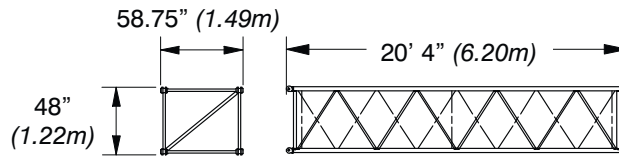
10 ft (3.05m) Extension

Weight: 550 lb (249kg)



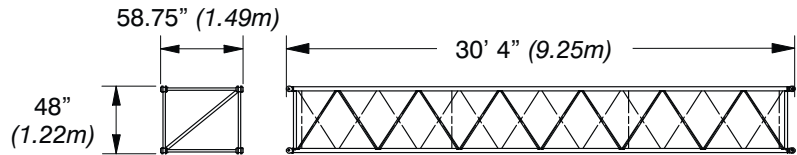
20 ft (6.10m) Extension

Weight: 1,100 lb (499kg)



30 ft (9.14m) Extension

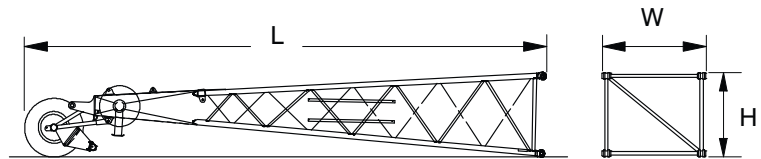
Weight: 1,650 lb (748kg)



20 ft (6.10m) Luffing Jib Top Section* ①

Length	24 ft 8.25 in	(7.52m)
Width	58.75 in	(1.49m)
Height	48 in	(1.22m)
Weight†	2,800 lb	(1 270kg)

† Weight includes pendants and hardware.



Number inside black circle “①” = # of components

* – Optional equipment

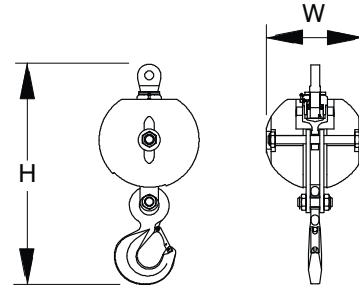
STERLING CRANE

Hook Balls

15 Ton (13.6mt) Swivel

Hook Ball* 1

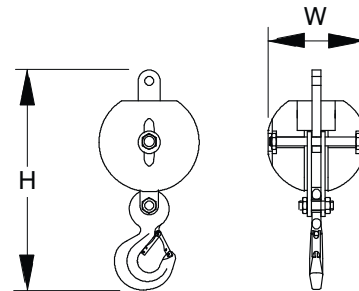
Width	17.50 in	(0.44m)
Height	40.50 in	(1.03m)
Weight	767 lb	(348kg)



15 Ton (13.6mt) Non-Swivel

Hook Ball* 1

Width	18 in	(0.46m)
Height	39.50 in	(1.00m)
Weight	748 lb	(339kg)

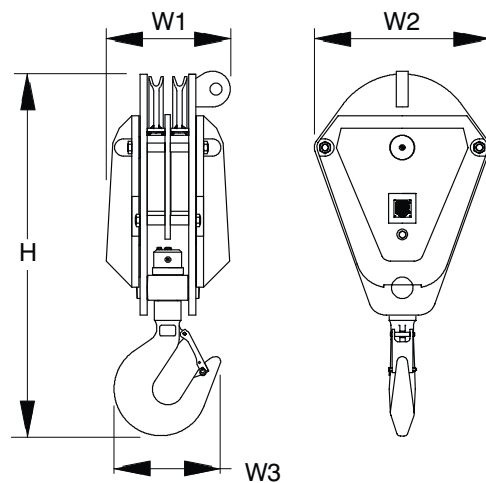


Hook Blocks

25 Ton (22.7mt)

2-Sheave Hook Block* 1

Width1	16.50 in	(0.42m)
Width2	24.75 in	(0.63m)
Width3	11.00 in	(0.28m)
Height	46.25 in	(1.17m)
Weight	1,167 lb	(529kg)



Number inside black circle "1" = # of components

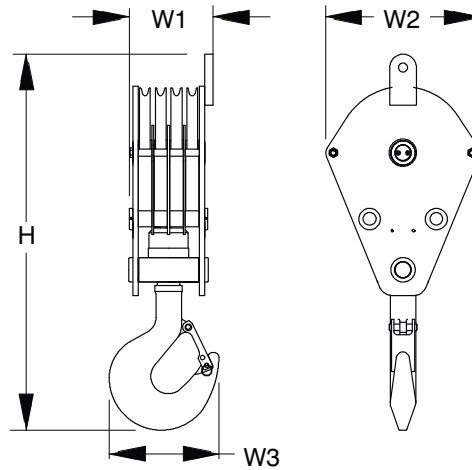
* - Optional equipment

STERLING CRANE

80 Ton (72.6mt)

4–Sheave Hook Block* ①

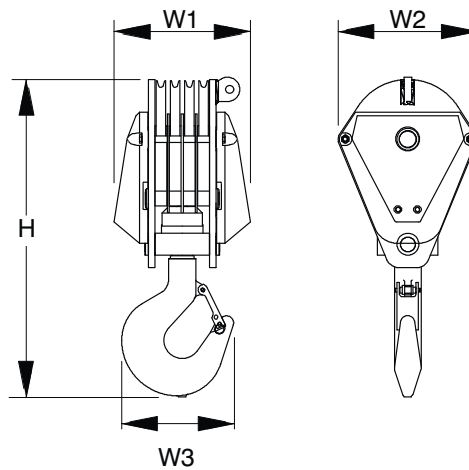
Width1	28.75 in	(0.73m)
Width2	15.00 in	(0.38m)
Width3	20.25 in	(0.51m)
Height	69.75 in	(1.77m)
Weight	1,520 lb	(689kg)



110 Ton (99.8mt)

4–Sheave Hook Block* ①

Width1	28.75 in	(0.73m)
Width2	28.00 in	(0.71m)
Width3	23.00 in	(0.58m)
Height	65.50 in	(1.66m)
Weight	2,975 lb	(1 349kg)



Number inside black circle “①” = # of components

* – Optional equipment

Working Weights

Based on basic crane including Isuzu AH–6HK1X diesel engine, turntable bearing, live mast, 12 part boom hoist reeving, backstops, crawler lower with 36 in (0.91m) wide track shoes, sealed track rollers, and catwalks, plus the following:	Ctwt “A”	Ctwt “AB”	Ctwt “ABC” + “A” Lower Ctwt
	lb (kg)	lb (kg)	lb (kg)
Lifting crane – includes 40 ft (12.19m) basic tubular boom, quickdraw cylinder, 870 ft (265.18m) of 26mm type “DB” hoist rope, 650 ft (198.12m) of 26mm type “RB” hoist rope, 110 Ton (99.8mt) 4–sheave hook block, and basic pendants.	130,458 (59 174)	149,198 (67 675)	190,058 (86 209)
Ground Bearing Pressure	psi	8.10	9.27
	kg/cm ²	0.57	0.65

STERLING CRANE

Transport Weights

Base Crane: Rigid Boom Backstops, 110 gal (416L) Of Fuel, Side Frames, 22' (6.7m) Live Mast, 12-part Boom Hoist Reeving, 870' (265.18m) Of Type "DB" Front Hoist Rope, 650' (198.12m) Of Type "RB" Rear Hoist Rope.

Item Description	Gross Weight		Transport Loads			
	lb	kg	#1	#2	#3	#4
Base Crane	97,037	44 016	1			
Base Counterweight	25,260	11 458		1		
Add Upper Counterweight Wing (Right)	9,410	4 268			2	
Add Upper Counterweight Wing (Left)	9,370	4 250		1	1	
Add Side Frame Counterweight	11,100	5 035				2
Add Lower Jacking System	5,962	2 704				
Add Hydraulic Third Drum Without Rope	1,850	839				
Add Hydraulic Fourth Drum Without Rope	4,367	1 981				
Add 20' (6.1m) Tube Base Section	1,991	903	1			
Add 20' (6.1m) Tube Top Section	2,309	1 047				1
Add 10' (3.05m) Tube Extension With Pins And Pendants	601	273		1		
Add 20' (6.1m) Tube Extension With Pins And Pendants	1,309	594		2		
Add 30' (9.14m) Tube Extension With Pins and Pendants	1,826	828			1	1
Add 40' (12.19m) Tube Extension With Pins And Pendants	2,312	1 049			1	1
Add 20' (6.1m) Angle Base Section	3,174	1 440				
Add 20' (6.1m) Angle Top Section	3,835	1 740				
Add 10' (3.05m) Angle Extension With Pins And Pendants	1,281	581				
Add 20' (6.1m) Angle Extension With Pins And Pendants	2,330	1 057				
Add 30' (9.14m) Angle Extension With Pins and Pendants	3,126	1 418				
Add Quick Draw Assembly	480	218	1			
Add Tagline Winder With Rope	1,040	472				
Add Fairleader	500	227				
Add 30' (9.1m) Tube Jib	690	313		1		
Add 15' (4.6m) Tube Jib Extension	270	122		3		
Add 5' (1.5m) Auxiliary Tip Extension	640	290				
Add Pile Driver Lead Adaptor	198	90				
Add Holding Rope – 26mm X 220' Type "DB"	352	160				
Add Closing Rope – 26mm X 165' Type "DB"	444	201				
Add Inhaul Rope – 26mm X 80' Type "M"	185	84				
Add Hoist Rope – 26mm X 700' Type "DB"	1,295	587				
Add Hoist Rope – 26mm X 700' Type "CC"	1,421	645				
Add Jib Wire Rope – 1" X 700' Type "DB"	1,295	597				
Add 3rd Drum Wire Rope – 0.75" X 550' Type "DB"	572	259				
Add 4th Drum Wire Rope – 0.75" X 550' Type "DB"	1,314	596				
Add 15-ton (13.6mt) Hook Ball – Non Swivel	750	340				
Add 15-ton (13.6mt) Hook Ball – Swivel	760	345				
Add 110-ton (100mt) 4 Sheave Hook Block	2,975	1 349				
Remove Front Hoist Rope – 26mm X 870' Type "DB"	-1,610	-730				
Remove Jib Wire Rope – 26mm X 650' Type "RB"	-1,300	-590				
Remove 50 gal (190L) Of Fuel	-362	-164				
Approximate Total Shipping Weight	lb		99,960	38,539	32,328	28,647
	kg		45 341	17 481	14 664	12 994

Notes:

Estimated weights vary by ± 2%. Numbers in the load columns (numbers 1–5) represent quantities.

Estimated transport loads assume the load out consist of 230' (70.1m) of tube boom and 75' (22.86m) of jib with full counterweight.

Support loads were targeted at 45,000 lb (20 412kg), 8' 6" (2.6m) wide, 48' (14.6m) long, and 13' 6" (4.1m) high using a drop deck trailer. This may vary depending on state laws, empty truck/trailer weights, and style of trailer.

STERLING CRANE

Transport Drawings – Tube Boom

