

STERLING CRANE



TRANSPORTATION SPECS - All Terrain Cranes

TADANO MODEL ATF180G-5 - 200 TON CAPACITY

COMPONENT WEIGHTS

Main Unit c/w Fly Jib & 26,455 lb cwt.

LBS.

136,942

KGS.

62,116

COUNTERWEIGHTS

LBS.

26,455

KGS.

12,000

Main Unit (No Counterweight)

124,269

56,367

1 Cwt. 12.0 t

2 Cwt. 7.0 t

3 Cwt. 7.0 t

4 Cwt. 12.0 t

5 Cwt. 10.2 t

6 Cwt. 1.8 t

15,432

7,000

15,432

7,000

26,455

12,000

22,487

10,200

3,968

1,800

ADDITIONAL INFORMATION

Hook Block 125 mt (7 Sheave)

1,350

613

TOTAL COUNTERWEIGHT

110,229

50,000

Ball 10 mt

300

137

Fly Jib (17'8" / 43'4")

3,539

1,606

Hydraulic Fly Jib

4,044

1,835

Auxiliary Winch c/w Rope

3,043

1,381

All Provinces / All Seasons

4 – 5' x 7' Steel Mats

1,500

681

Cwt – 26,455 lb.

Tandem

1

Tire Size 525 – 80R25

Cwt – 52,910 lb.

Tridem

1

Cwt – 79,366 lb.

Super B

1

Cwt – 110,230 lb.

Tandem

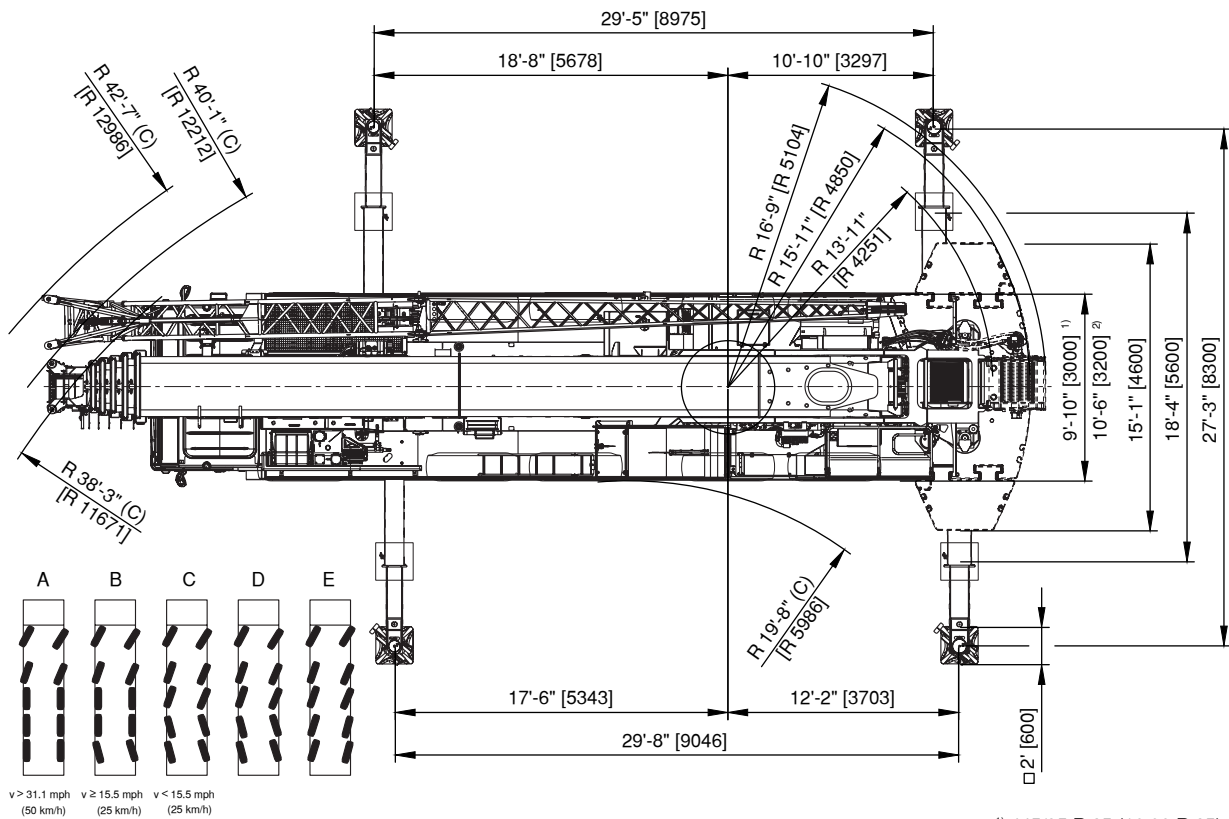
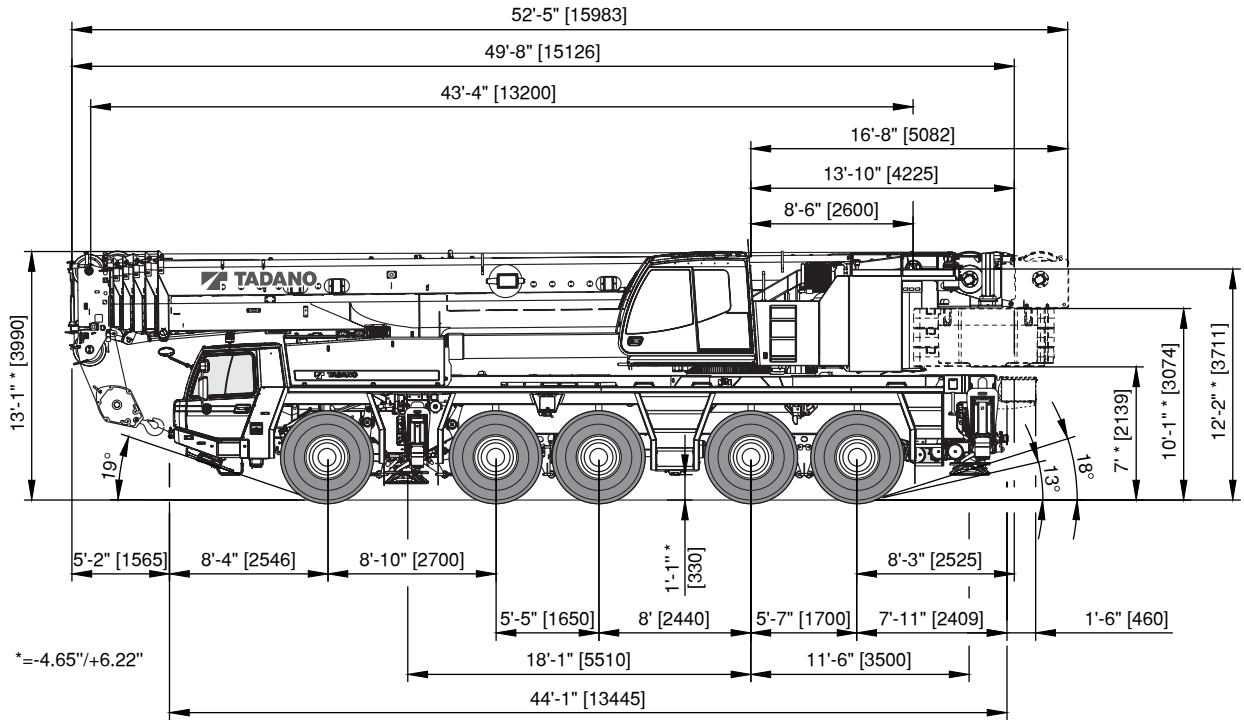
1

Super B

1

STERLING CRANE

Dimensions ft, [mm] / Dimensiones ft, [mm]

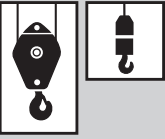


¹⁾ 445/95 R 25 (16.00 R 25)
²⁾ 525/80 R 25 (20.50 R 25)

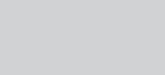






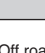
Subject to change without prior notice / Sujeto a cambios sin previo aviso

STERLING CRANE





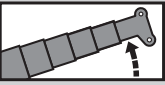
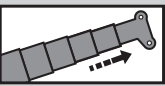
Weights / Working speeds / Pesos / Velocidades de trabajo

 * Rams horn * Gancho doble	Lifting capacity Capacidad de elevación	Sheaves Poleas	Part of line Ramales de cable	Weight Peso
		160 t*	9	19
	125 t*	7	15	2,645.5 lbs
	100 t*	5	11	2,535.3 lbs
	63 t*	3	7	1,322.8 lbs
	63 t	3	7	1,322.8 lbs
	25 t	1	3	1,322.8 lbs
	10 t	-	1	661.4 lbs



		1	2	3	4	5	6	7	8	9	10	11	12	13	14	15	16	R1	R2	
		 445/95 R 25 (16.00 R 25)		1.9	1.9	2.5	2.5	3.1	4.3	5.0	5.6	6.8	8.7	10.6	12.4	14.9	18.6	21.7	26.1	
 525/80 R 25 (20.50 R 25)		3.7	4.3	5.0	6.2	7.5	9.3	11.2	13.0	16.2	19.3	23.6	28.6	34.8	42.3	49.7	52.8	3.7	4.3	47%
 mph																				

* Off road range / * Con transmisión todo terreno

	Infinitely variable Infinitamente variable	Rope (diameter/length) Cable (diámetro/longitud)	Max. single line pull Tirón máximo por ramal
	0 - 426.5 ft/min 0 - 130 m/min single line ramal simple	0.83"/ 1,017.1' 21 mm / 310 m	19,109 lbs 85 kN
	0 - 426.5 ft/min 0 - 130 m/min single line ramal simple	0.83"/ 820.2' 21 mm / 250 m	19,109 lbs 85 kN
	0 - 1.2 rpm		
	-1.5° - +84°	approx. 55 s aproximadamente 55 s	
	43.3 ft - 196.8 ft 13.2 m - 60.0 m	approx. 420 s aproximadamente 420 s	