



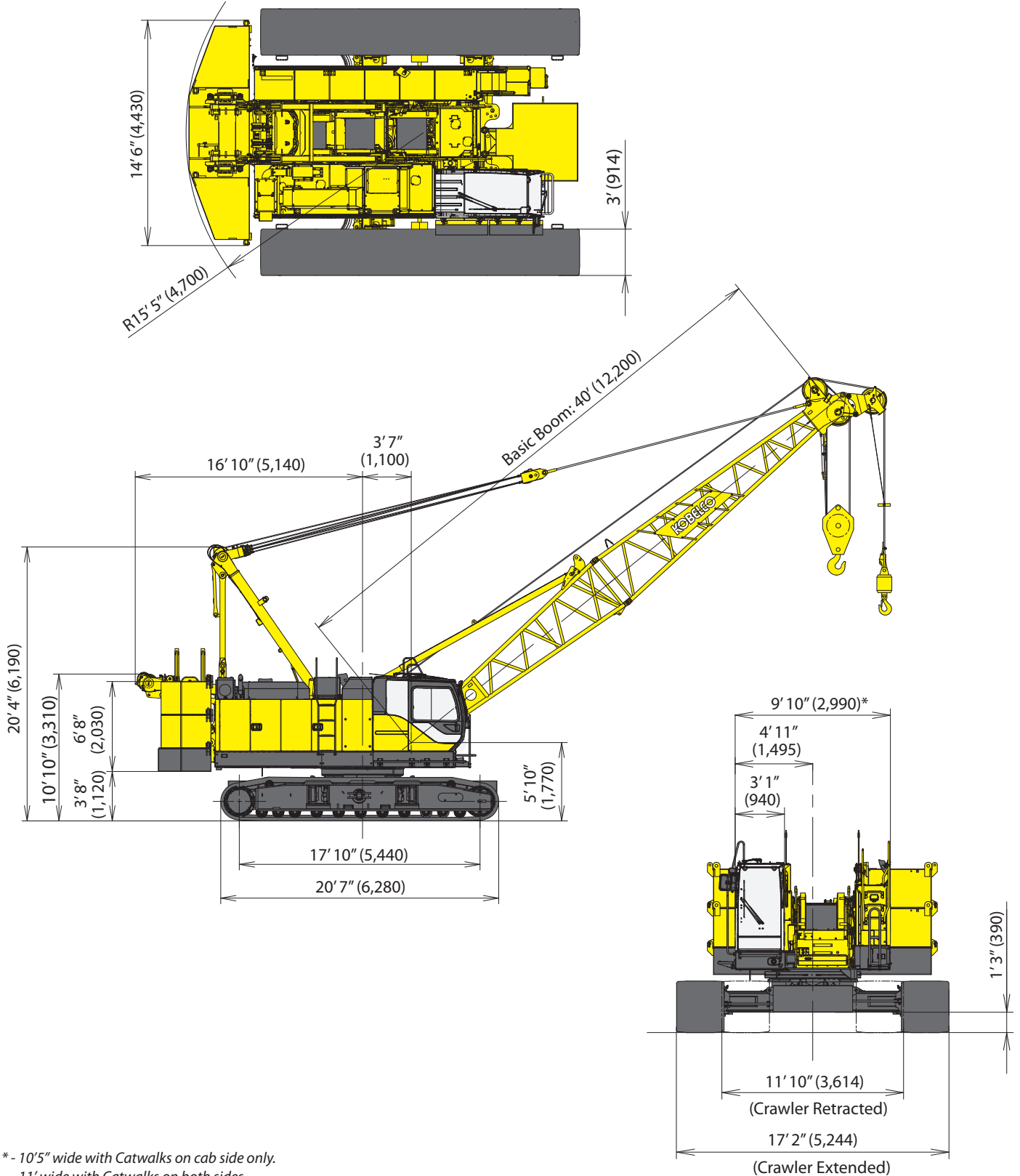
## TRANSPORTATION SPECS - Crawler Cranes

### KOBELCO MODEL CK1100G - 110 TON CAPACITY

<b>COMPONENT WEIGHTS</b>	<b>LBS.</b>	<b>KGS.</b>	<b>BOOM 40' MIN / 200' MAX</b>	<b>LBS</b>	<b>KGS</b>
Complete Crane c/w 40' Boom (Inc. 75 Ton Block, Ball + Max. CWT)	202,230	90,781	Butt Section 19'7"	3,400	1,517
Upper, carbody, tracks, gantry & cables	90,600	41,090	10' Insert c/w pendants	800	364
Counterweight Upper max.	69,000	31,310	20' Insert c/w pendants	1,400	613
Counterweight Lower max.	31,800	14,400	40' Insert c/w pendants	2,400	1,098
Tracks – 36" shoes (2) each	16,850	7,640	40' Insert c/ w pendants and lug	2,500	1,113
			Boom Tip Section 22'8"	2,900	1,292
<b>COUNTERWEIGHT (UPPER)</b>					
<b>BASE CWT (14'6" X 3'11" X 2'9") 1 PC.</b>	18,200	8,310			
R Cwt (4'9" x 3'10" x 2'11") 2 pc.	12,700	5,750	<b>JIB 30' MIN / 60' MAX</b>		
L Cwt (4'9" x 3'10" x 2'11") 2 pc	<u>12,700</u>	5,750	Jib Butt Section with strut 15'9"	1,400	637
Total Upper CWT	69,000	31,310	Jib 10' Insert	280	128
<b>COUNTERWEIGHT CARBODY</b>					
Carbody (6'3" x 5'10" x 1'11") 2 pc.	15,900	7,200	Jib 20' Insert	480	218
<b>TOTAL CARBODY CWT</b>	31,800	14,400	Jib Tip Section 16'5"	500	227
<b>ADDITIONAL INFORMATION</b>					
75 Ton Block, 4 Sheave	2,860	1,298			
13 Ton Hook & Weight Ball	700	318			
Auxiliary Sheave	430	195			
Main Load Line 26 mm x 771 feet (235 m)					
Auxiliary Hoist Line 26 mm x 525 feet (160 m)					
Boom Hoist Line 16 mm x 492 feet (150 m)					
3 <sup>rd</sup> Drum Line 22 mm x 476 feet (145 m)					

# STERLING CRANE

## General Dimensions



\* - 10'5" wide with Catwalks on cab side only.  
11' wide with Catwalks on both sides.

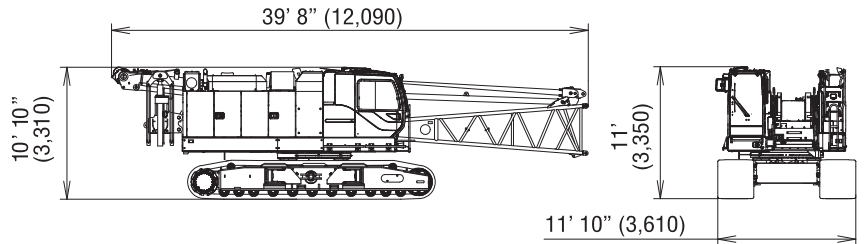
# STERLING CRANE

## Dimensions and Weight

Dimensions: ft-in (mm) Weight: lbs (kg)

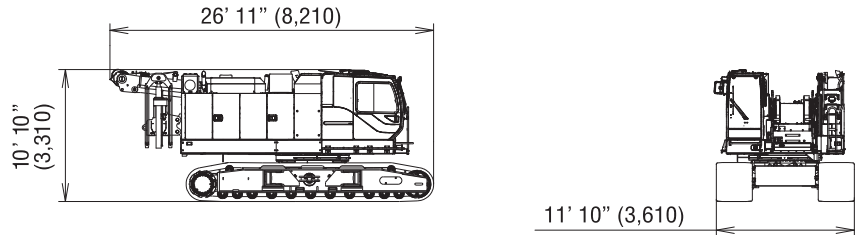
### Base Machine - 1

Weight: 95,200 lbs (43,150 kg)  
 Boom base, gantry, crawlers, self removal unit,  
 and wire ropes (front, rear, and boom hoist)



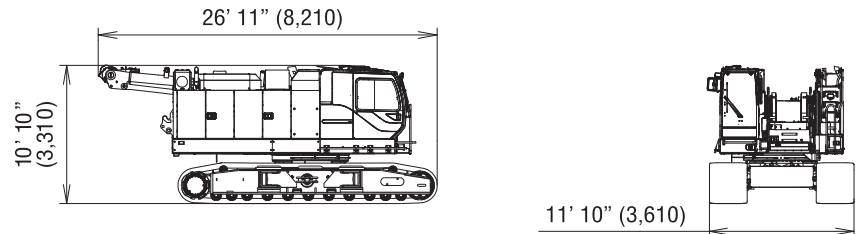
### Base Machine - 2

Weight: 90,600 lbs (41,090 kg)  
 Gantry, crawlers, self removal unit, and  
 wire ropes (front, rear, and boom hoist)



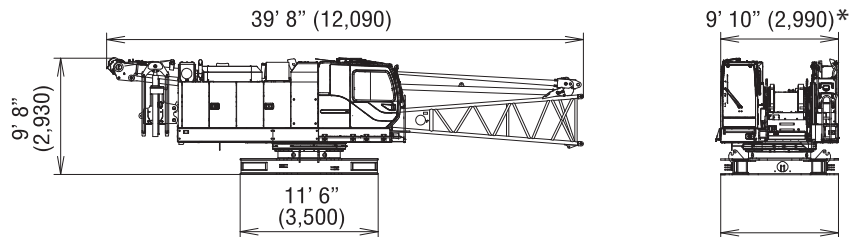
### Base Machine - 3

Weight: 88,700 lbs (40,230 kg)  
 Gantry, crawlers, and  
 wire ropes (front, rear, and boom hoist)



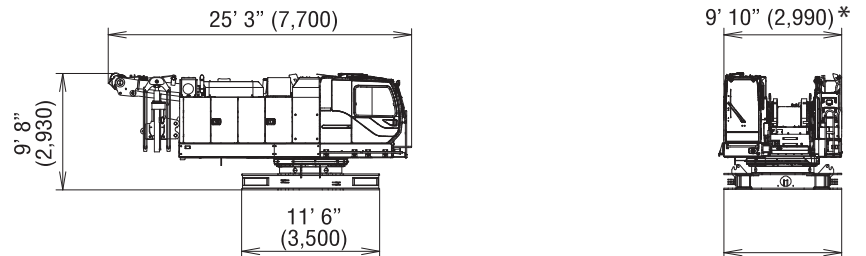
### Base Machine - 4

Weight: 61,500 lbs (27,880 kg)  
 Boom base, gantry, self removal unit, and  
 wire ropes (front, rear, and boom hoist)



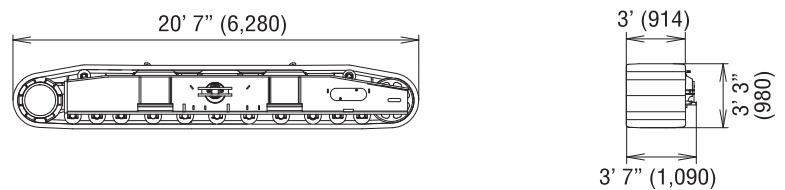
### Base Machine - 5

Weight: 56,900 lbs (25,820 kg)  
 Gantry, self removal unit, and  
 wire ropes (front, rear, and boom hoist)



### Crawler

Weight: 16,850 lbs (7,640 kg)



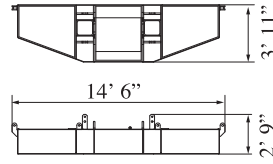
\* - 10'5" wide with Catwalks on cab side only.  
 11' wide with Catwalks on both sides.

# STERLING CRANE

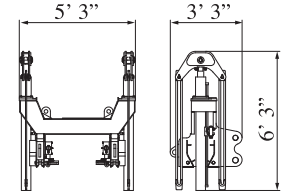
## Dimensions and Weight

Dimensions: ft-in (mm) Weight: lbs (kg)

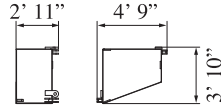
**Counterweight Base**  
Weight: 18,200 lbs (8,310 kg)



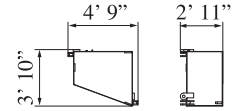
**Self Removal Unit**  
Weight: 1,900 lbs (870 kg)



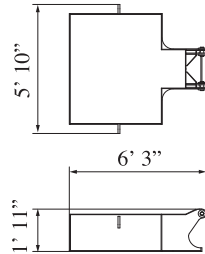
**Counterweight (R)**  
Weight: 12,700 lbs (5,750 kg)



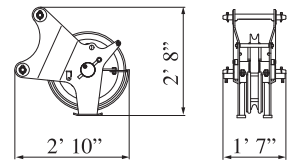
**Counterweight (L)**  
Weight: 12,700 lbs (5,750 kg)



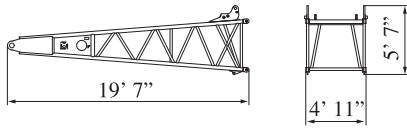
**Carbody Weight**  
Weight: 15,900 lbs (7,200 kg)



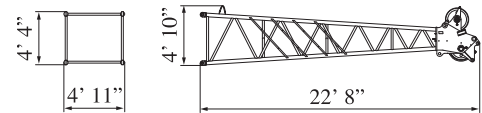
**Auxiliary Sheave**  
Weight: 430 lbs (195 kg)



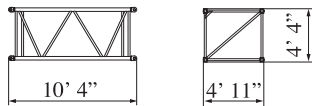
**Boom Base**  
Weight: 3,400 lbs (1,517 kg)



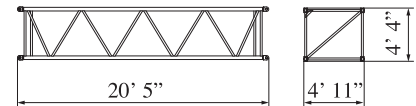
**Boom Tip**  
Weight: 2,900 lbs (1,292 kg)  
Includes cable roller and guy lines



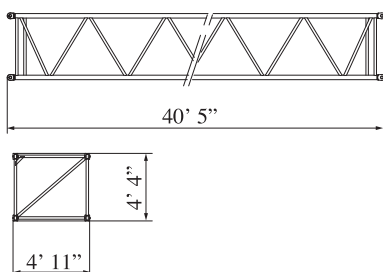
**10 ft (3.0 m) Insert Boom**  
Weight: 800 lbs (364 kg)  
Includes cable roller and guy lines



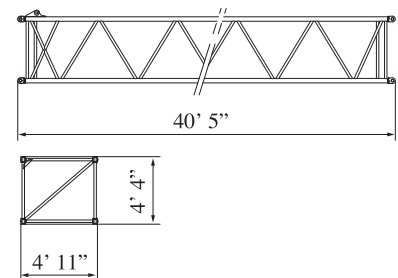
**20 ft (6.1 m) Insert Boom**  
Weight: 1,400 lbs (613 kg)  
Includes cable roller and guy lines



**40 ft (12.2 m) Insert Boom**  
Weight: 2,400 lbs (1,098 kg)  
Includes cable roller and guy lines



**40 ft (12.2 m) Insert Boom (with lug)**  
Weight: 2,500 lbs (1,113 kg)  
Includes cable roller and guy lines



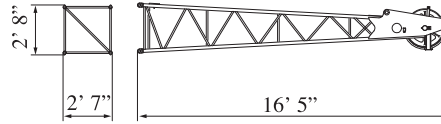
# STERLING CRANE

## Dimensions and Weight

Dimensions: ft-in (mm) Weight: lbs (kg)

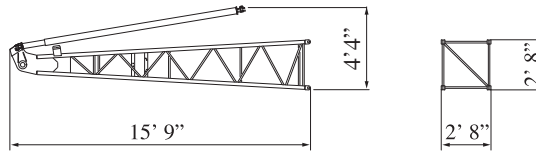
### Jib Tip

Weight: 500 lbs (227 kg)  
Includes cable roller.



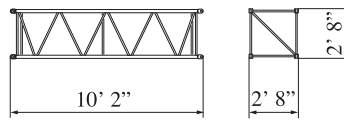
### Jib Base and Strut

Weight: 1,400 lbs (637 kg)  
Includes guy line.



### 10 ft (3.0 m) Insert Jib

Weight: 280 lbs (128 kg)  
Includes cable roller and guy line.



### 20 ft (6.1 m) Jib Insert

Weight: 480 lbs (218 kg)  
Includes cable roller and guy line.

