



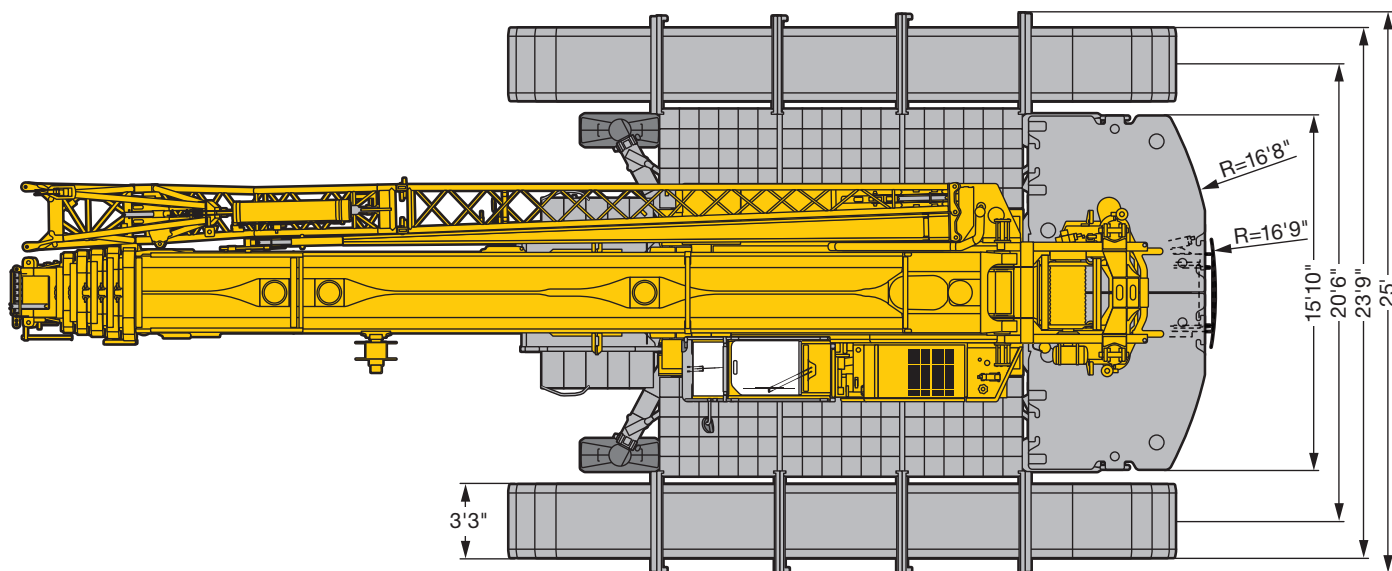
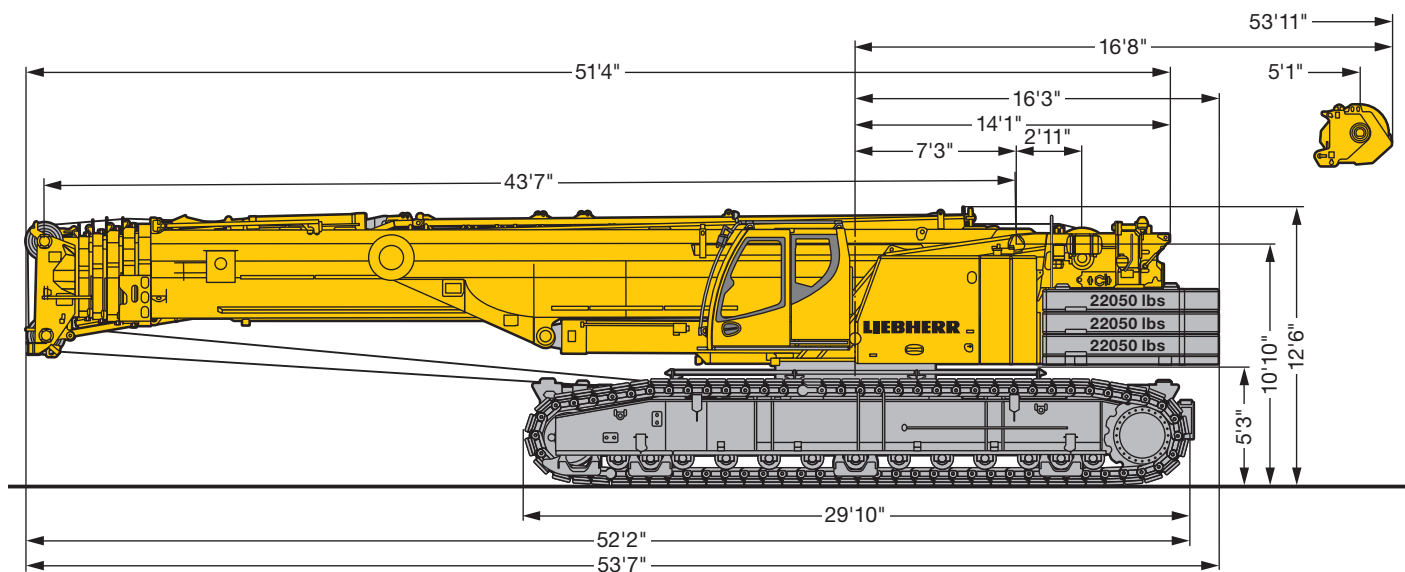
TRANSPORTATION SPECS - Crawler Cranes

LIEBHERR MODEL LTR 1220 - 250 TON CAPACITY

<u>COMPONENT WEIGHTS</u>	<u>LBS.</u>	<u>KGS.</u>
Complete Crane c/w Hydraulic Boom (Inc. 125 mT Block, Ball + Max. CWT)	403,158	182,870
Upper, carbody, tracks, boom & cables	200,850	91,104
Counterweight Upper max.	154,350	70,000
Counterweight Lower max.	44,100	20,000
Tracks – (29'10" x 5'1" x 3'3") (2) each	80,250	36,400
<u>COUNTERWEIGHT (UPPER)</u>		
Cwt A (15'10" x 7'10" x 4'1") 1 pc.	22,050	10,000
Cwt B, C (7'10" x 7'10" x 1'3") 6 pc	<u>22,050</u>	<u>10,000</u>
Total Upper CWT	154,350	70,000
<u>COUNTERWEIGHT (LOWER)</u>		
Center Cwt (7'0" x 5'5" x 3'4") 2 pc.	22,050	10,000
<u>TOTAL CARBODY CWT</u>	44,100	20,000
<u>ADDITIONAL INFORMATION</u>		
125 mT Block, 5 Sheave	2,756	1,250
80 mT Block, 3 Sheave	3,197	1,450
12.5 mT Hook & Weight Ball	1,102	500
Auxiliary Sheave	221	100
Winch 2 with rope and self mounting device	4,200	1,710
Main Load Line 25 mm x 920 feet		
Auxiliary Hoist Line 25 mm x 920 feet		

STERLING CRANE

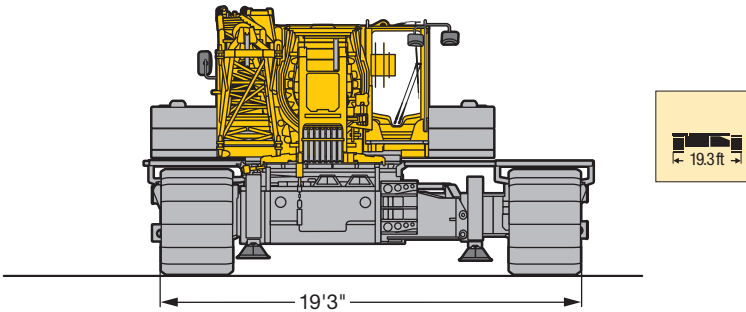
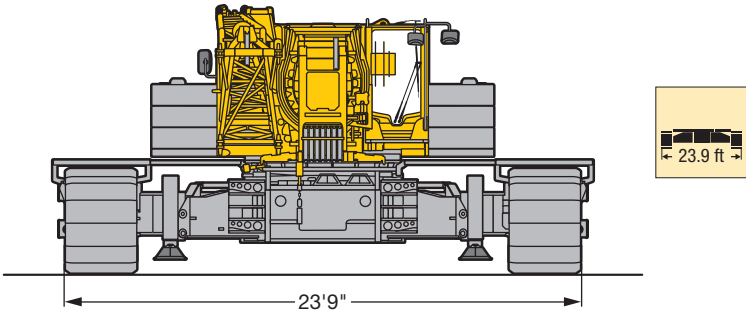
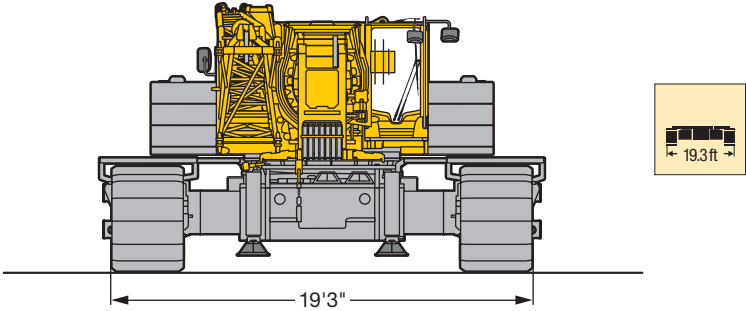
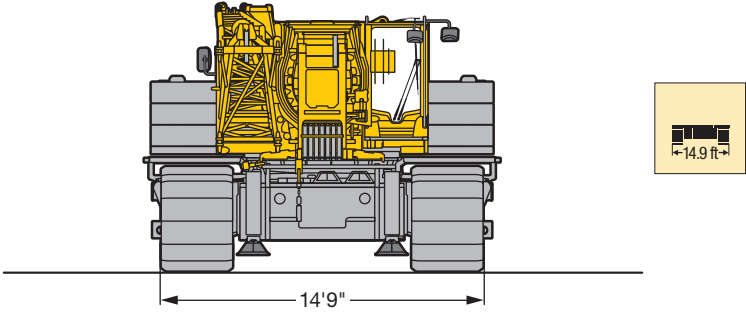
Dimensions



US2786

STERLING CRANE

Dimensions



US2803.01