

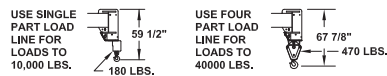
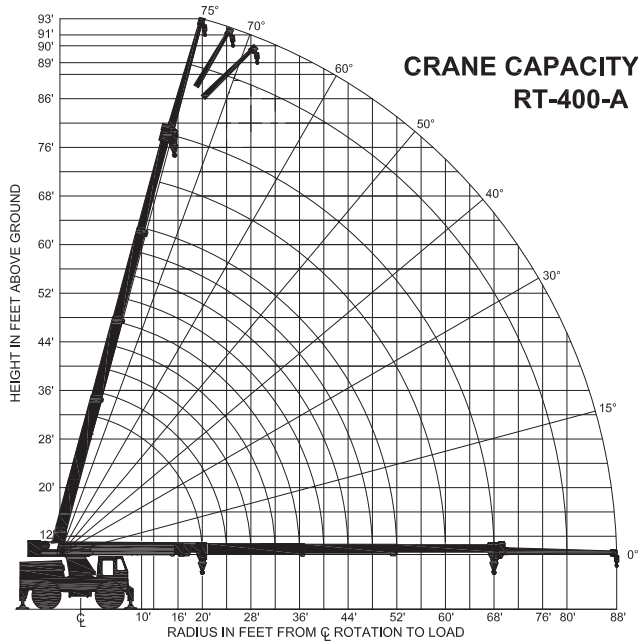
STERLING CRANE



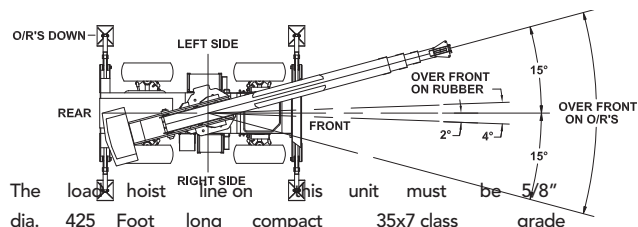
LIFTING CHARTS - Rough Terrain Cranes

BRODERSON MODEL RT-400-A - 20 TON CAPACITY

Crane Capacity Chart: Imperial



Load hooks, downhaul weights, hook blocks and other load handling devices shall be considered part of the load EXCEPT FOR HOIST ROPE. Other devices except hoist rope shall be considered part of the load.



The load hoist line on this unit must be 5/8" dia. 425 Foot long compact 35x7 class grade 2160 wire rope (or equivalent) with a minimum breaking strength of 35,000 lbs.

Approved tires: 17.5-2520 Pr-100 psi

Torque wheel nuts to 475 ft. Lbs. (These conditions must be maintained to handle rated loads on this crane.)

STERLING CRANE



LIFTING CHARTS - Rough Terrain Cranes

BRODERSON MODEL RT-400-A - 20 TON CAPACITY

CAPACITIES APPLY TO OPERATION ON FIRM LEVEL SURFACE								
LOAD RADIUS FEET	MAIN BOOM OR EXTENSION CAPACITIES IN POUNDS							
	360° ROTATION			OVER FRONT				
	ON RUBBER	ON OUTRIGGERS	ON RUBBER	ON OUTRIGGERS	ON RUBBER	ON OUTRIGGERS		
MAIN BOOM	10	18300	40000	26300	40000	40000		
	12	13900	34100	22000	34100	34100		
	14	10900	29200	18000	29200	29200		
	16	8600	25500	14800	25500	25500		
	18	7300	23200	12400	22700	22700		
	20	6000	22000	10000	22000	22000		
	22	5000	19000	8300	20000	20000		
	24	4200	17800	7000	18300	18300		
	26	3600	16100	6100	16900	16900		
	28	3000	13300	5200	15700	15700		
	30	2500	12000	4600	14600	14600		
	32	2200	10700	4000	13700	13700		
	34	1800	9700	3500	12900	12900		
	36	1500	8900	3100	11900	11900		
	38	1300	8000	2700	10900	10900		
	40	1000	7300	2400	9900	9900		
	42	800	6700	2000	9200	9200		
	46	---	5600	1600	8100	8100		
	50	---	4700	1200	7000	7000		
	54	---	4000	800	6100	6100		
58	---	3400	500	5300	5300			
62	---	2900	---	4600	4600			
66	---	2400	---	4000	4000			
68	---	2300	---	3600	3600			
BOOM EXTENSION	72	---	2500	---	2800	2800		
	76	---	2000	---	2800	2800		
	80	---	1600	---	2800	2800		
	84	---	1300	---	2800	2800		
	88	---	1100	---	2000	2000		
	20-FOOT BOOM EXTENSION CAPACITIES							
	MAIN BOOM ANGLE							
	ANGLE	0°	15°	30°	40°	50°	60°	70°
0°	2300	2400	2700	3100	3700	4800	6200	7000
15°	---	2300	2400	2600	2900	3400	4100	4800
30°	---	---	2300	2400	2500	2700	3100	3400

LOAD RADIUS IS THE HORIZONTAL DISTANCE FROM THE CENTER OF ROTATION OF THE UNLOADED CRANE TO THE VERTICAL LOAD LINE WITH THE LOAD APPLIED.

CAPACITIES ON OUTRIGGERS ARE 85% OF TIPPING LOADS. CAPACITIES ON RUBBER ARE 75% OF TIPPING LOADS. CAPACITIES BELOW BOLD LINES ARE LIMITED BY TIPPING. OTHER CAPACITIES ARE LIMITED BY STRUCTURAL OR HYDRAULIC CAPACITY.

PICK AND CARRY WITH THE SHORTEST PRACTICAL BOOM, CENTERED OVER THE FRONT. OPERATE WITH BOOM AS LOW AS POSSIBLE, WITH THE LOAD CLOSE TO THE GROUND. PICK AND CARRY CAPACITIES ARE FOR SMOOTH, LEVEL PAVED SURFACE. SPEED MUST BE LESS THAN 3 MPH.

THE BOOMS ON THIS UNIT ARE ALL STEEL AND HAVE NO LINE VOLTAGE RATING - NO ELECTRICAL INSULATION VALUE.

MAXIMUM HYDRAULIC PRESSURE: 3000 PSI

BOOM EXTENSION DEDUCT: 500 LBS WHEN STOWED ON BASE BOOM

ENSURE ANTI-TWO-BLOCK SWITCH IS FUNCTIONAL AFTER DEPLOYING OR STOWING BOOM EXTENSION.

DO NOT POSITION BOOM AT LOAD RADII WHERE NO LOAD CAPACITIES ARE SHOWN.

EXCEEDING CAPACITY RATINGS OR APPLYING SIDE LOADS TO THE BOOM OR BOOM EXTENSION IS MISUSE, IS HAZARDOUS, AND VOIDS WARRANTY.

CAUTION: BOOM EXTENSION LOADS MUST NOT EXCEED MAIN BOOM CAPACITY. DO NOT PICK AND CARRY WITH LOADS ON BOOM EXTENSION. DO NOT LIFT LOADS ON BOOM EXTENSION WHEN ON RUBBER.