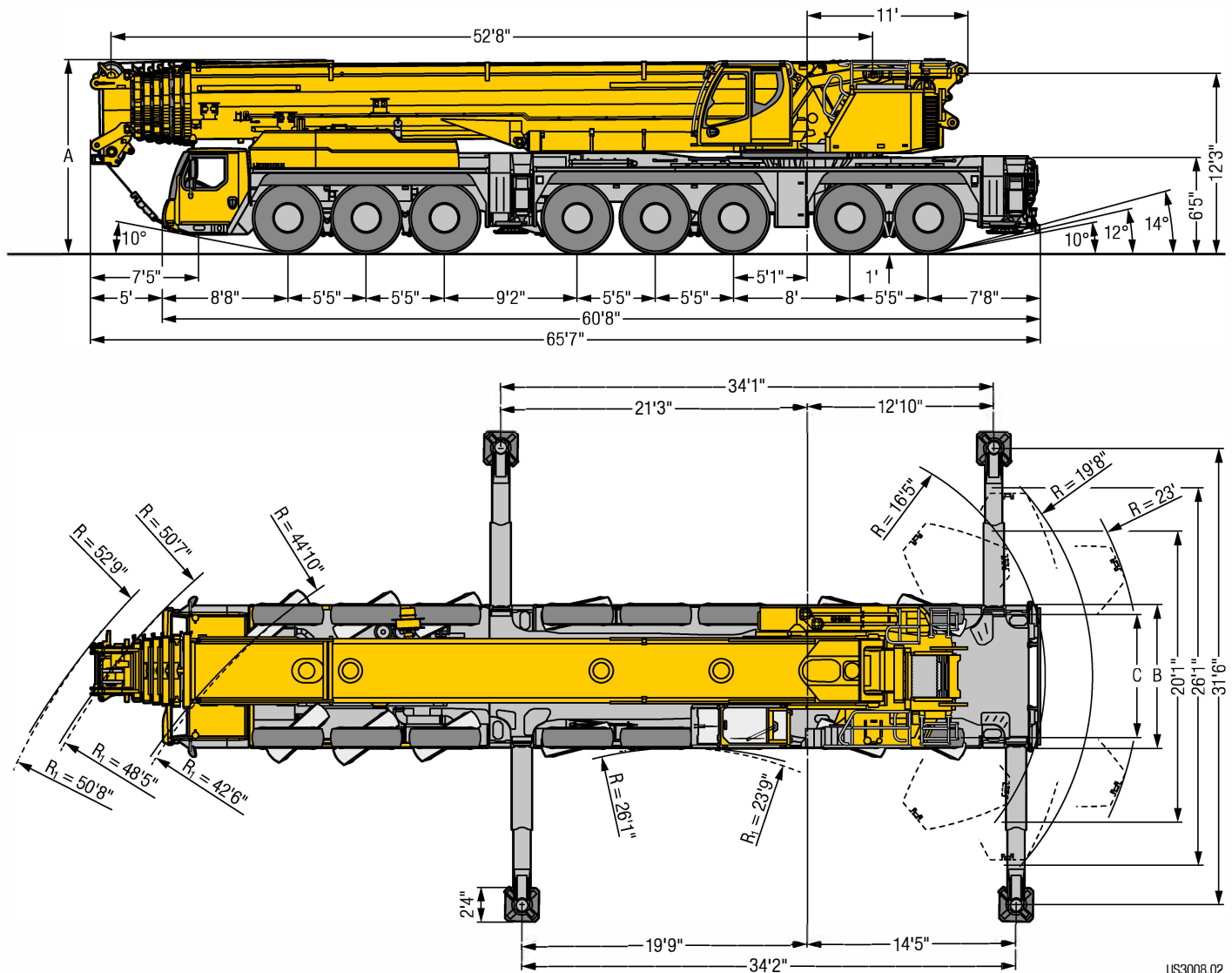




TRANSPORTATION SPECS - All Terrain Cranes

LIEBHERR MODEL LTM 1450-8.1 - 550 TON CAPACITY

Dimensions Encombrement



R_i = All-wheel steering · Direction toutes roues

Dimensions/Encombrement

	A	A*	B	C
445/95 R 25 (16.00 R 25)	13'1"	12'10"	9'10"	8'4"
525/80 R 25 (20.5 R 25)	13'1"	12'10"	10'2"	8'5"

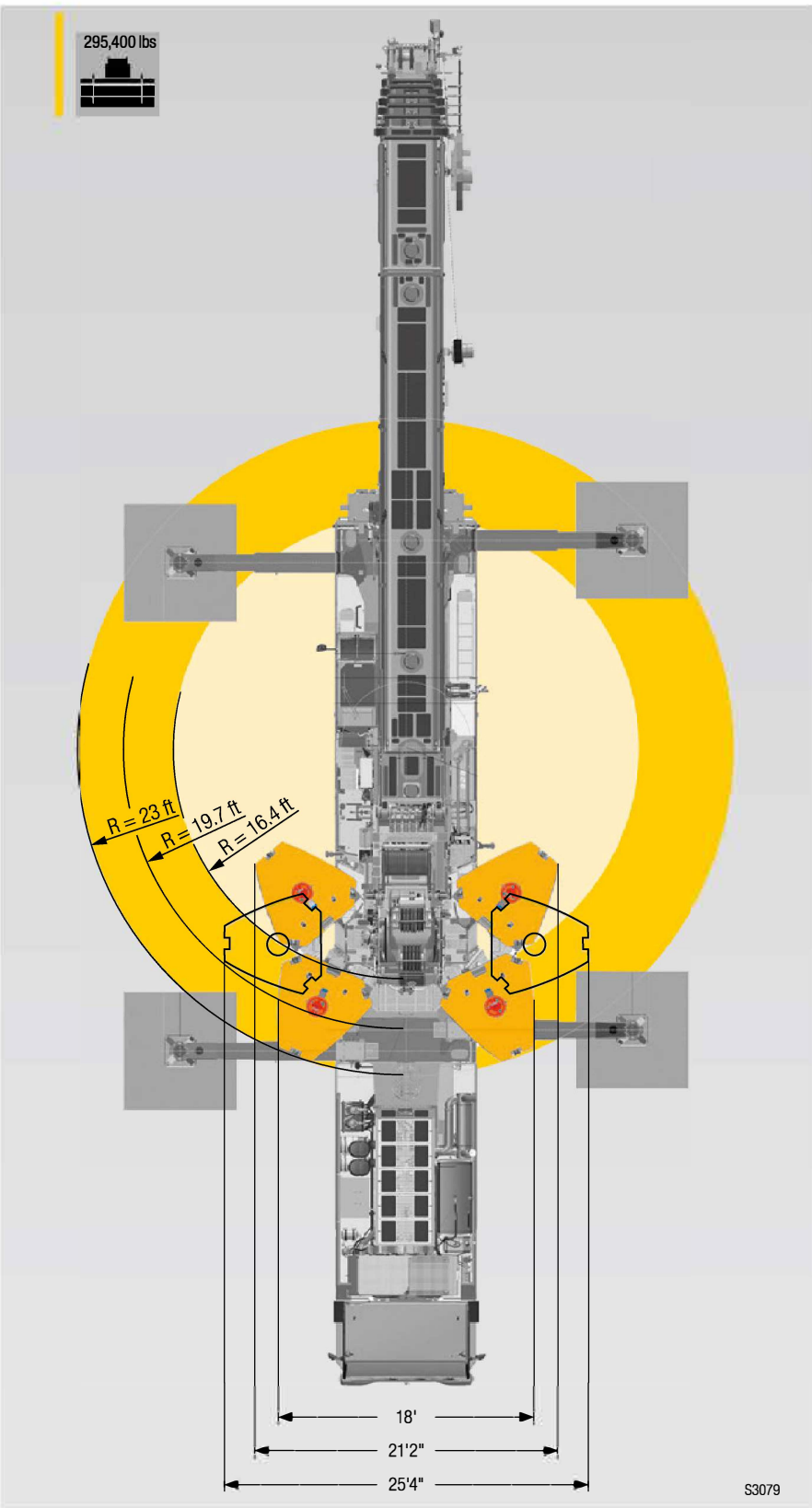
* lowered · abaisse



TRANSPORTATION SPECS - All Terrain Cranes

LIEBHERR MODEL LTM 1450-8.1 - 550 TON CAPACITY

VarioBallast









TRANSPORTATION SPECS - All Terrain Cranes

LIEBHERR MODEL LTM 1450-8.1 - 550 TON CAPACITY







Weights Poids

Hook block/Moufles à crochet











			
527,600 lbs	11	22	8,160 lbs
444,200 lbs	9	18	7,275 lbs
378,300 lbs	7	15	7,715 lbs
285,700 lbs	5	11	6,835 lbs
187,100 lbs	3	7	5,730 lbs
82,600 lbs	1	3	3,090 lbs
28,000 lbs	-	1	1,545 lbs

Working speeds Vitesses

Crane carrier/Châssis porteur

	 min.	 max.	 %	 
445/95 R 25 (16.00 R 25) 525/80 R 25 (20.5 R 25)	1.2	53	39,5 %	12 / R2

Crane superstructure/Partie tournante

	 max			 F
	0 – 446 ft/min single line ft/min au brin simple	0.98"	1705 ft	28,325 lbs
	0 – 502 ft/min single line ft/min au brin simple	0.98"	3035 ft	28,325 lbs
	0 – 1.3rpm			
	approx. 80 seconds to reach 83.5° boom angle env. 80 s jusqu'à 83,5°			
	approx. 731 seconds for boom extension from 53 ft – 279 ft env. 731 s pour passer de 53 ft – 279 ft			

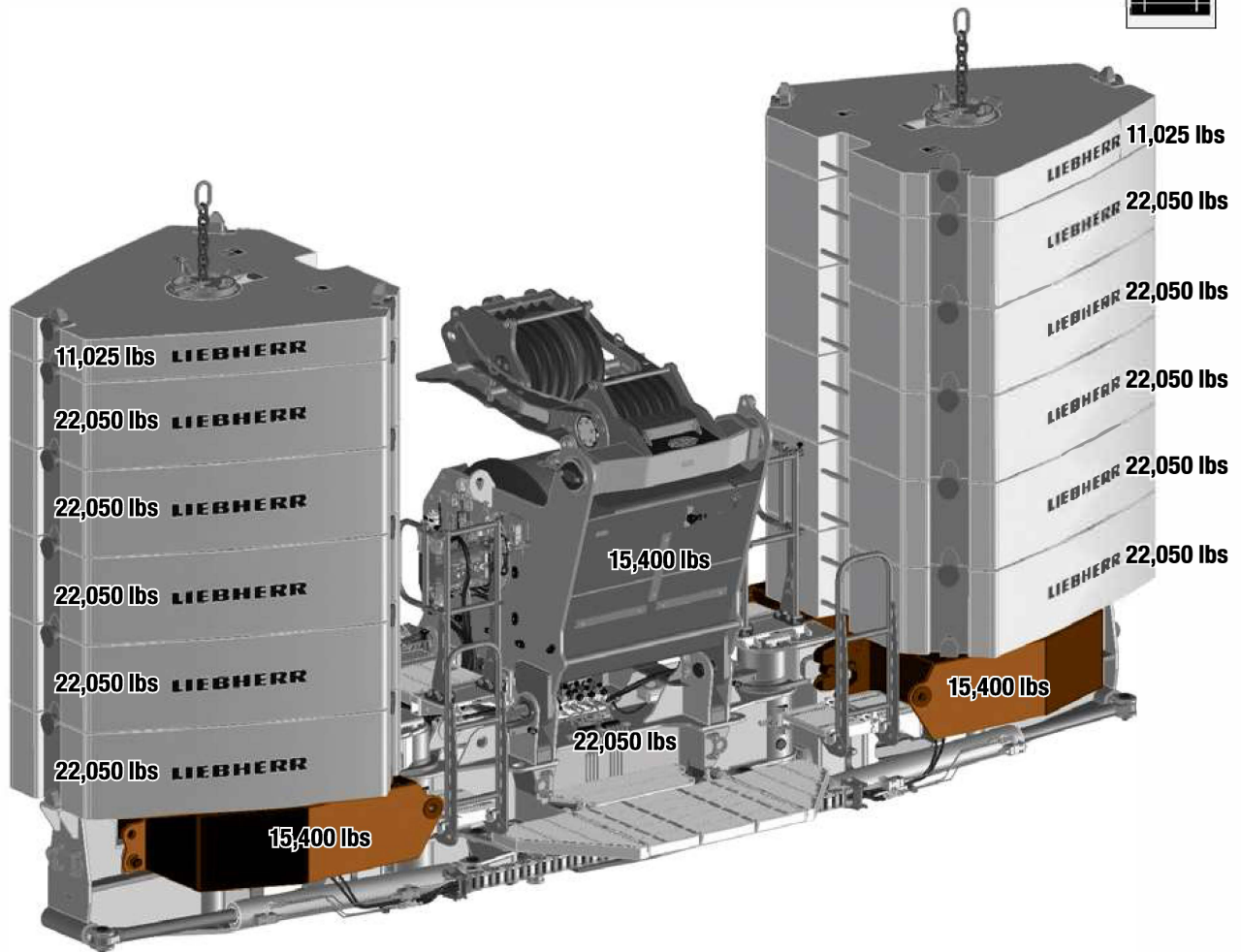
STERLING CRANE



TRANSPORTATION SPECS - All Terrain Cranes

LIEBHERR MODEL LTM 1450-8.1 - 550 TON CAPACITY

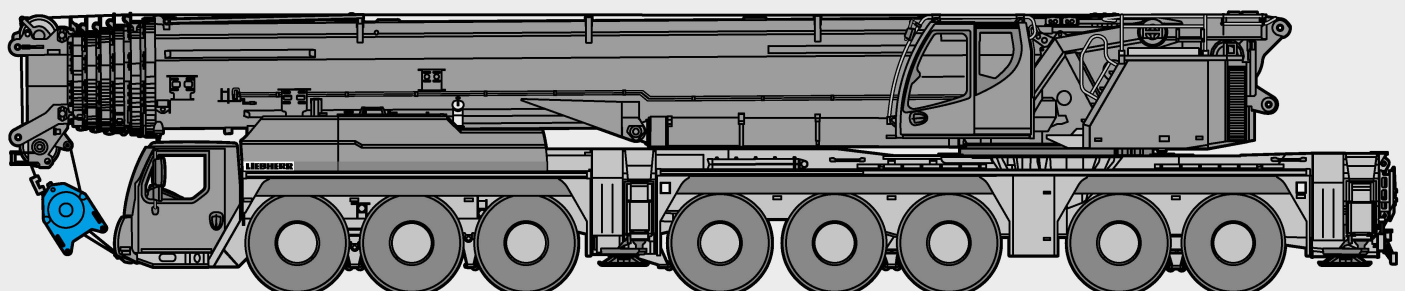
Counterweight Contrepoids



Axle/Essieu

	1	2	3	4	5	6	7	8	
lbs	26,400	26,400	26,400	26,400	26,400	26,400	26,400	26,400	211,200 ¹⁾

¹⁾ with sheave set - avec jeu de poulies



STERLING CRANE

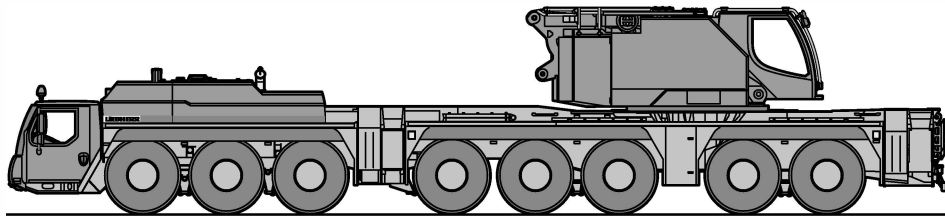


TRANSPORTATION SPECS - All Terrain Cranes

LIEBHERR MODEL LTM 1450-8.1 - 550 TON CAPACITY

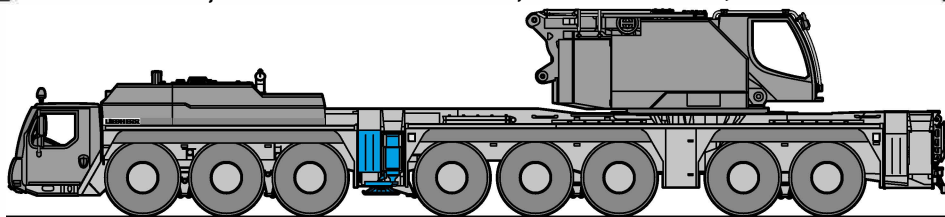
On-road driving Déplacement sur route

< 105,100 lbs



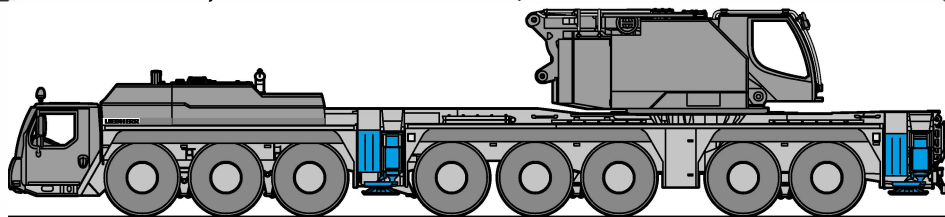
≤ 11,700 lbs ≤ 11,700 lbs ≤ 11,700 lbs ≤ 15,200 lbs ≤ 15,200 lbs
≤ 11,700 lbs ≤ 15,200 lbs ≤ 15,200 lbs

< 112,800 lbs



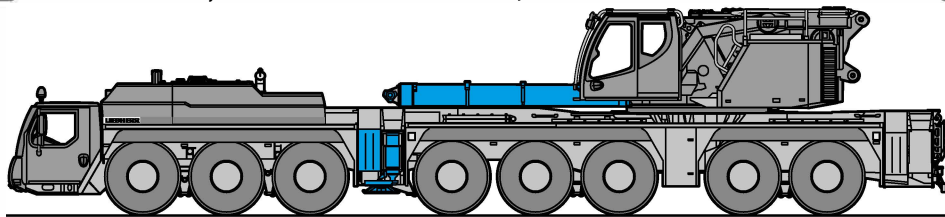
≤ 13,200 lbs ≤ 13,200 lbs ≤ 13,200 lbs ≤ 15,700 lbs ≤ 15,700 lbs
≤ 13,200 lbs ≤ 15,700 lbs ≤ 15,700 lbs

< 123,400 lbs



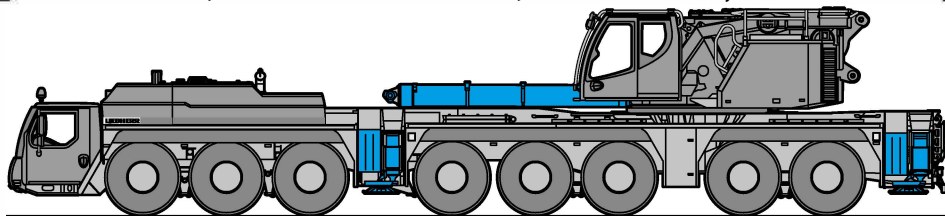
≤ 12,000 lbs ≤ 12,000 lbs ≤ 12,000 lbs ≤ 19,300 lbs ≤ 19,300 lbs
≤ 12,000 lbs ≤ 19,300 lbs ≤ 19,300 lbs

< 121,900 lbs



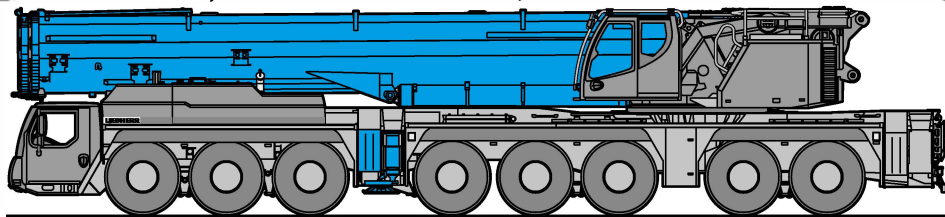
≤ 11,800 lbs ≤ 11,800 lbs ≤ 11,800 lbs ≤ 19,200 lbs ≤ 19,200 lbs
≤ 11,800 lbs ≤ 19,200 lbs ≤ 19,200 lbs

< 131,800 lbs



≤ 10,700 lbs ≤ 10,700 lbs ≤ 10,700 lbs ≤ 22,600 lbs ≤ 22,600 lbs
≤ 10,700 lbs ≤ 22,600 lbs ≤ 22,600 lbs

< 155,800 lbs



≤ 18,000 lbs ≤ 18,000 lbs ≤ 18,000 lbs ≤ 21,300 lbs ≤ 21,300 lbs
≤ 18,000 lbs ≤ 21,300 lbs ≤ 21,300 lbs



TRANSPORTATION SPECS - All Terrain Cranes

LIEBHERR MODEL LTM 1450-8.1 - 550 TON CAPACITY

Equipment Equipment

Crane carrier

Frame	Self-manufactured, torsion-resistant box-type design of high-tensile fine grained structural steel.
Outriggers	4-point supporting system, hydraulically telescopic into horizontal and vertical direction. Operation with remote control, automatic support leveling, electronic inclination display.
Engine	8-cylinder Diesel, make Liebherr, watercooled, output 505 kW (686 h.p.), max. torque 2331 lbs-ft. Exhaust emissions acc. to (EU) 2016/1628, EPA/CARB or ECE-R.96. Fuel reservoir: 225 gallons.
Transmission	Automatic transmission system with torque converter and interarder, make ZF, 12 forward speeds and 2 reverse speeds, transfer case with transfer differential.
Axles	Low maintenance crane chassis axles, all 8 axles steered. Axles 1, 2, 4 and 5 are planetary axles. Axles 4 and 5 with transversal differential locks, axles 2 and 4 with longitudinal differential locks.
Suspension	All axles are mounted on hydropneumatic suspension – "Niveaumatik suspension" and are lockable hydraulically.
Tyres	16 tyres. Size of tyres: 445/95 R 25 (16.00 R 25).
Steering	2-circuit system with hydraulic servo steering. Active speed depending rear axle steering, special steering programs for various driving situations.
Brakes	Service brake: all-wheel servo-air brake, all axles are equipped with disc brakes, dual circuit. Additional brakes: exhaust flap brake, Telma Eddy current brake, interarder in gearbox. Hand brake: Spring-loaded, acting on all wheels of axles 3 to 7.
Driver's cab	Spacious corrosion resistant with comfort furnishings, mounted on rubber shock absorbers, safety glazing.
Electrical system	Modern data bus technique, 24 Volt DC, 2 batteries of 180 Ah each.

Crane superstructure

Frame	Liebherr-manufactured, torsionally rigid steel construction made from high-tensile fine-grain steel. Triple-roller slewing rim.
Crane drive	Mechanical drive of the crane hydraulic from the chassis. Variable axial piston pumps with servo control and power regulation.
Control	Two self-centering control levers (joy-sticks). Pedal switches for telescoping. Infinitely variable crane motions through displacement control of the hydraulic pumps. Additional working speed control by variation of the Diesel engine speed.
Hoist gear	Axial piston variable displacement motor, hoist drum with integrated planetary gear and spring-loaded static brake. Actuation by closed regulated oil circuit.
Luffing gear	2 differential rams with pilot-controlled brake valve.
Slewing gear	2 axial piston constant motors, planetary gear, spring loaded multiple disk brake. Actuation by closed regulated oil circuit.
Crane cab	Large screen area, compound glass, comfort furnishing, cabin tiltable approx. 20° to rear.
Safety devices	LICCON2 safe load indicator, test system, hoist limit switches, safety valves against rupture of pipes and hoses.
Telescopic boom	1 base section and 6 telescopic sections. All telescopic sections extendable individually by means of the rapid-cycle telescoping system TELEMATIK. Boom length 53 ft to 279 ft.
Counterweight	295,400 lbs Hydraulic ballasting device.

Operating modes

K	Swing away jib 23 ft – 115 ft Adjustment 0°; 10°; 20°; 40°
F	Fixed lattice jib 23 ft – 184 ft Adjustment 0°; 10°; 20°; 40°
N	Luffing fly jib 46 ft – 276 ft
H	Auxiliary jib 5 ft

Additional equipment

2nd hoist gear	For the 2 hook operation or as luffing winch.
Tyres	16 tyres, size 525/80 R 25 (20.5 R 25).

Other items of equipment available on request.