

STERLING CRANE



TRANSPORTATION SPECS - Rough Terrain Cranes

LINK-BELT MODEL RTC 8080 - 80 TON CAPACITY

■ Fuel Tank

One 75 gal (283.9L) capacity tank
Diesel Exhaust Fluid (DEF) tank
• One 5 gal (18.9L) capacity tank

■ Hydraulic System

All functions are hydraulically powered allowing positive precise control with independent or simultaneous operation of all functions.

Main Pumps

- One two section fixed displacement gear pump for the front/rear winches and boom hoist/telescope circuits.
- One two section fixed displacement gear pump for the swing/steering and outrigger/telescope/service brake/oscillation circuits.
- One two section gear pump for an additional supply to the front/rear winch circuit and the hydraulic oil cooler fan drive.
- Combined pump capacity of 138 gpm (522.4Lpm)

Hydraulic Reservoir – 174 gal (658.7L) capacity equipped with sight level gauge. Diffusers built in for deaeration.

Filtration – One 10 micron, full flow return line filter. Accessible for easy filter replacement.

■ Maximum Speed

17 mph (27.4 km/h)

■ Gradeability

Counterweight	Ascending		Descending		Side	
	Degrees	% Grade	Degrees	% Grade	Degrees	% Grade
0	22.0	40%	5.0	9%	5.0	9%
9,600 lbs (4.4t)	20.0	36%	14.0	25%		
19,200 lbs (8.8t)	18.0	32%	18.0	32%		

■ Pump Drive

One pump is mounted on the engine with the rest being transmission mounted. All pumps are mechanically driven by the diesel engine.

- Front/rear winches and boom hoist/telescope pump can be disconnected with a manual pump disconnect to aid in cold weather starting.

■ Paint

Entire machine is pre-painted and oven baked with Highsolid Paint (2 part epoxy/polyester) and/or (2 part epoxy primer/2 part polyurethane top coat). Standard Link-Belt Red, Link-Belt Gray, and Gloss Black colors apply.



TRANSPORTATION SPECS - Rough Terrain Cranes

LINK-BELT MODEL RTC 8080 - 80 TON CAPACITY

Axle Loads

Base crane with zero counterweight and full tank of fuel		Gross Vehicle Weight (1)		Upper Facing Front				Upper Facing Rear			
				Front Axles		Rear Axles		Front Axles		Rear Axles	
		lb	kg	lb	kg	lb	kg	lb	kg	lb	kg
Tier 4f/ Stage IV	81,125	36 798	52,515	23 820	28,610	12 977	21,959	9 960	59,166	26 837	
Tier 3/ Stage IIIA	80,992	36 737	52,573	23 847	28,419	12 891	22,017	9 987	58,975	26 751	
Pintle hook, front		13	6	17	8	-5	-2	17	8	-5	-2
Pintle hook, rear		13	6	-5	-2	18	8	-5	-2	18	8
Hydro-gas suspension		56	25	20	9	36	16	20	9	36	16
Operator in cab		250	113	140	64	110	50	110	50	140	64
Hoist drum follower – main		69	31	-24	-11	93	42	93	42	-24	-11
Auxiliary winch with 500 ft (152.4m) wire rope		616	279	-75	-34	691	313	691	313	-75	-34
Hoist drum follower – auxiliary		69	31	-6	-3	75	34	75	34	-6	-3
Substitute 500 ft (152.4m) wire rope with 670 ft (204.2m) – auxiliary		213	97	-7	-3	220	100	220	100	-7	-3
Remove 670 ft (202.4m) wire rope from rear (main) winch		-856	-388	187	85	-1,043	-473	-1,043	-473	187	85
Remove 500 ft (152.4m) wire rope from front (auxiliary) winch		-643	-292	21	10	-664	-301	-664	-301	21	10
Counterweight removal		300	136	-89	-40	389	176	389	176	-89	-40
One slab of counterweight on upper		9,600	4 355	-3,356	-1 522	12,956	5 877	12,956	5 877	-3,356	-1 522
Two slabs of counterweight on upper		19,200	8 709	-6,712	-3 045	25,912	11 754	25,912	11 754	-6,712	-3 045
Emergency steering		258	117	40	18	218	99	218	99	40	18
360° mechanical swing lock		140	64	72	33	68	31	68	31	72	33
Air conditioning		128	58	37	17	91	87	91	87	37	17
Floodlight to front of boom base section		11	5	15	7	-4	-2	-4	-2	15	7
Fly mounting brackets to boom base section for fly options		225	102	306	39	-81	-37	-81	-37	306	139
38 ft (11.6m) offsettable fly – stowed		1,659	753	2,895	1 313	-1,236	-561	-1,236	-561	2,895	1 313
38–64 ft (11.6–19.5m) offsettable fly – stowed		2,401	1 089	3,888	1 764	-1,487	-675	-1,487	-675	3,888	1 764
10–38–64 ft (3.0–11.6–19.5m) offsettable fly – stowed		2,762	1 253	4,728	2 145	-1,966	-892	-1,966	-892	4,728	2 145
Auxiliary lifting sheave		110	50	327	148	-217	-98	-217	-98	327	148
80 ton (72.5t) 5–sheave hook block at bumper		1,406	638	2,134	968	-728	-330	-728	-330	2,134	968
60 ton (54.4t) 4–sheave hook block at bumper		1,109	503	1,683	763	-574	-260	-574	-260	1,683	763
10 ton (9.1t) hook ball at bumper		583	264	885	401	-302	-137	-302	-137	885	401
8.5 ton (7.7t) hook ball at bumper		360	163	546	248	-186	-84	-186	-84	546	248
80 ton (72.5t) 5–sheave hook block at boom head		1,406	638	4,031	1 828	-2,625	-1 191	-2,625	-1 191	4,031	1 828
60 ton (54.4t) 4–sheave hook block at boom head		1,109	503	3,180	1 442	-2,071	-939	-2,071	-939	3,180	1 442
10 ton (9.1t) hook ball at boom head		583	264	1,672	758	-1,089	-494	-1 089	-494	672	758
8.5 ton (7.7t) hook ball at boom head		360	163	1,032	468	-672	-305	-672	-305	1,032	468

Tire	Maximum Allowable Axle Load @ 20 mph (32.2km/h)
29.5 x 25 (28-PR)	55,000 lb (24 948kg)

(1) Adjust gross vehicle weight and axle loading according to component weight.
 Note: All weights are ±3%.

STERLING CRANE

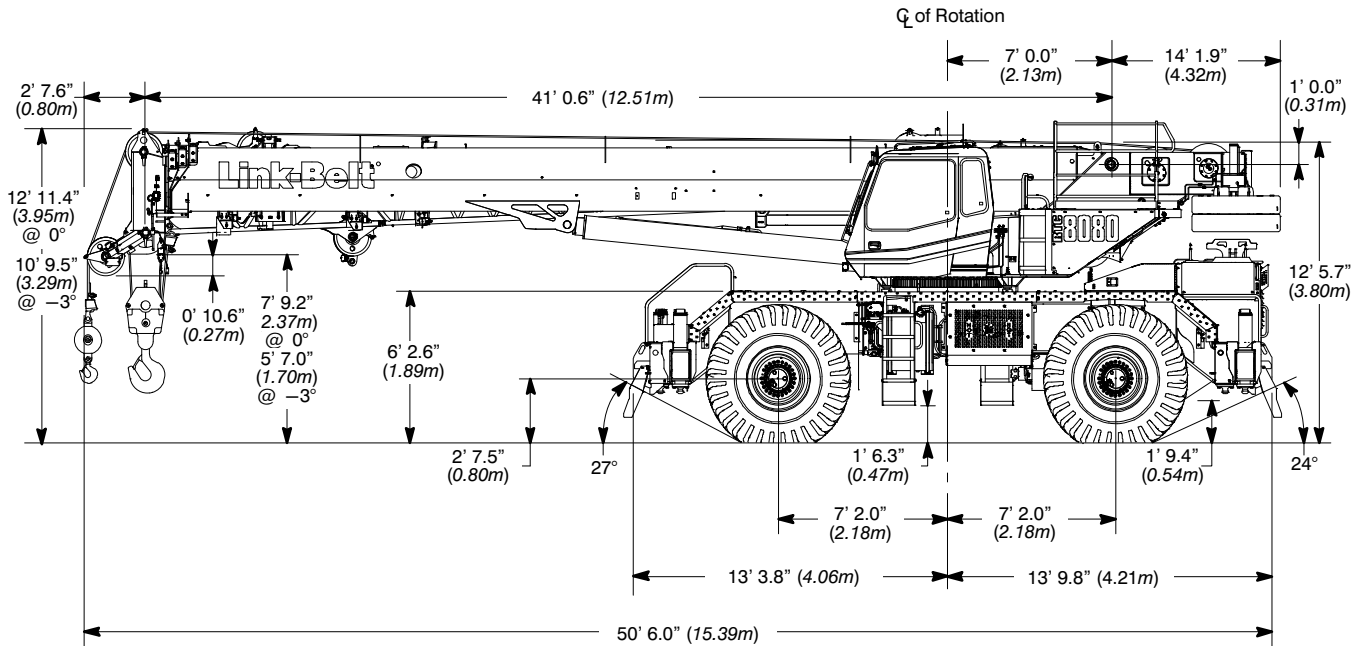


TRANSPORTATION SPECS - Rough Terrain Cranes

LINK-BELT MODEL RTC 8080 - 80 TON CAPACITY

General Dimensions

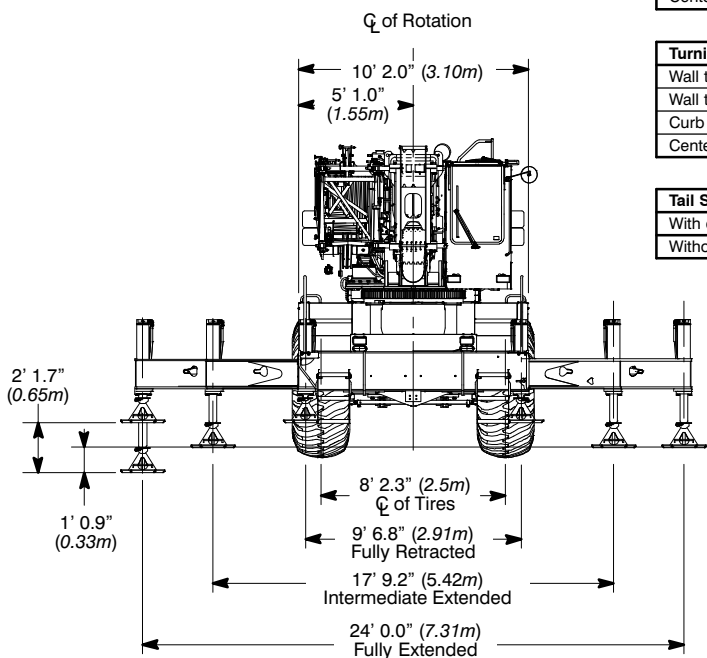
Tier 4f / Stage IV



Turning Radius - Front Wheel (4x2) Steering	English	Metric
Wall to wall over carrier	48' 3"	14.71m
Wall to wall over boom attachment	60' 1"	18.31m
Curb to curb	46' 8"	14.22m
Centerline of tire	45' 3"	13.79m

Turning Radius - All Wheel (4x4) Steering	English	Metric
Wall to wall over carrier	27' 10"	8.48m
Wall to wall over boom attachment	38' 11"	11.86m
Curb to curb	26' 0"	7.92m
Centerline of tire	24' 6"	7.47m

Tail Swing	English	Metric
With counterweight	14' 2"	4.32m
Without counterweight	13' 2"	4.01m



Not To Scale

STERLING CRANE

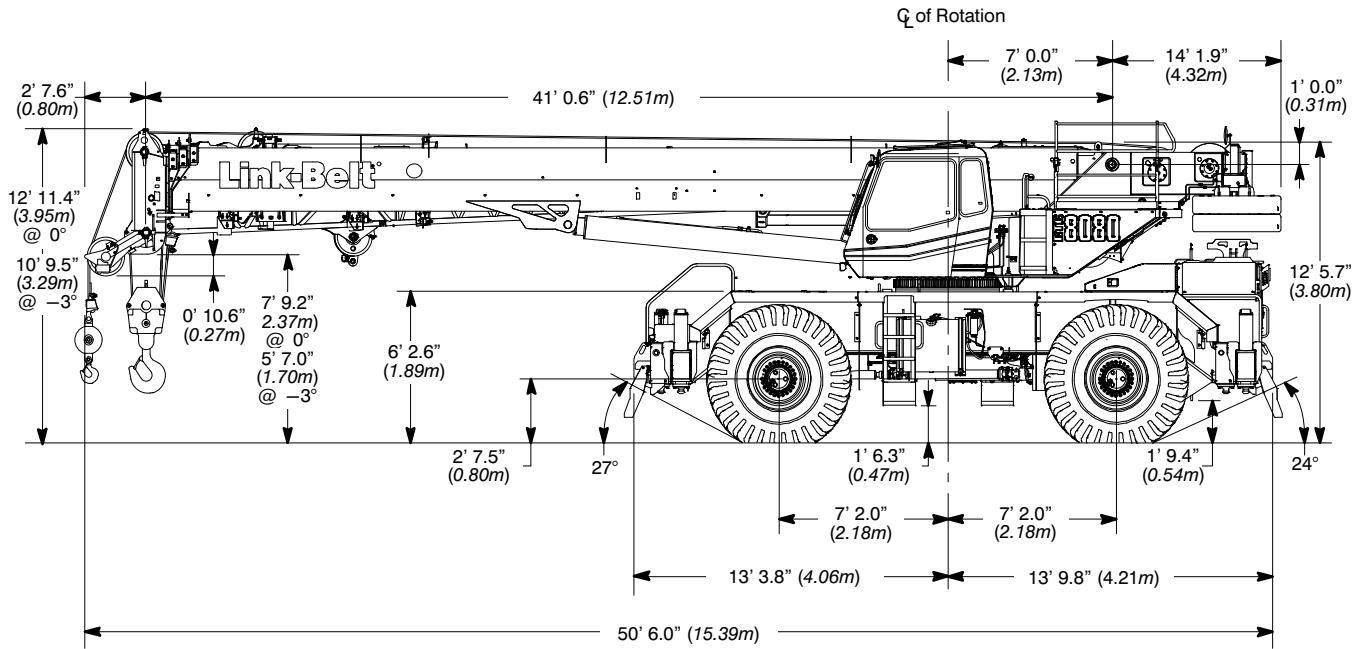


TRANSPORTATION SPECS - Rough Terrain Cranes

LINK-BELT MODEL RTC 8080 - 80 TON CAPACITY

General Dimensions

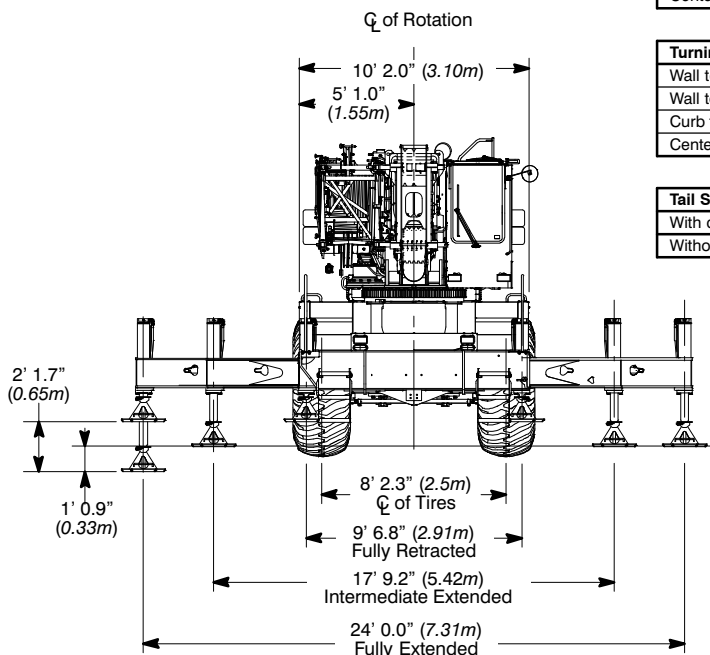
Tier 3 / Stage IIIA



Turning Radius - Front Wheel (4x2) Steering	English	Metric
Wall to wall over carrier	48' 3"	14.71m
Wall to wall over boom attachment	60' 1"	18.31m
Curb to curb	46' 8"	14.22m
Centerline of tire	45' 3"	13.79m

Turning Radius - All Wheel (4x4) Steering	English	Metric
Wall to wall over carrier	27' 10"	8.48m
Wall to wall over boom attachment	38' 11"	11.86m
Curb to curb	26' 0"	7.92m
Centerline of tire	24' 6"	7.47m

Tail Swing	English	Metric
With counterweight	14' 2"	4.32m
Without counterweight	13' 2"	4.01m



Not To Scale