



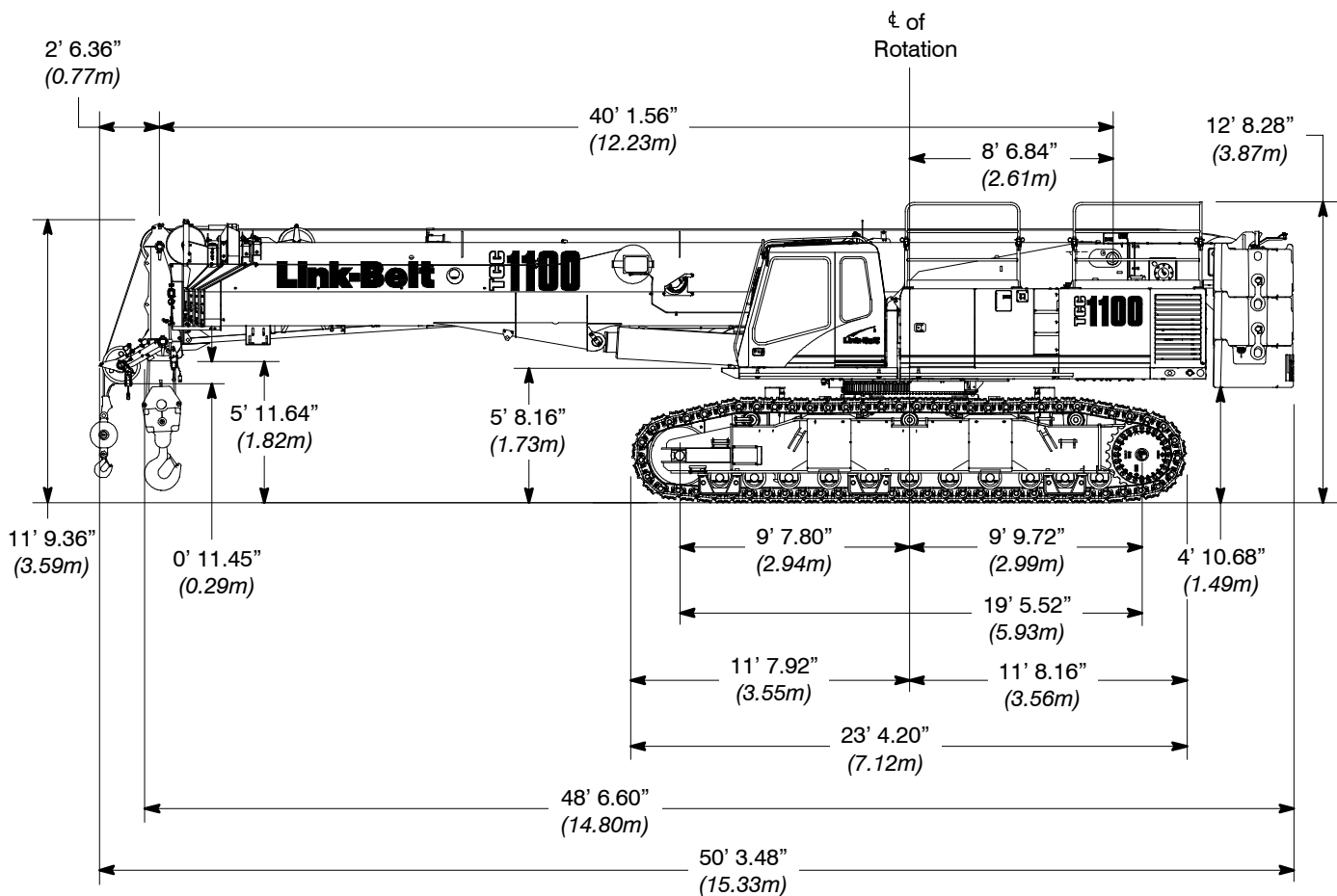
TRANSPORTATION SPECS - Crawler Cranes

LINK-BELT MODEL TCC1100 - 110 TON CAPACITY

Dimensions

Base Crane

| General Dimensions | English | Metric |
|---------------------|-----------|------------|
| Basic Boom | 40-150 ft | 12.2-45.7m |
| Minimum Load Radius | 10 ft | 3.05m |
| Maximum Boom Angle | 80° | 80° |
| Track Shoe Width | 36 in | 0.91m |

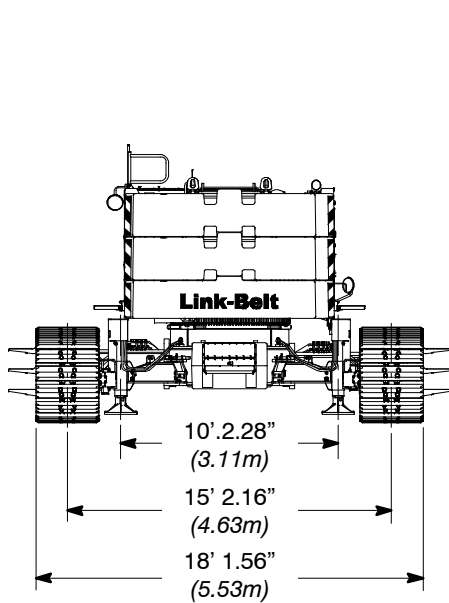
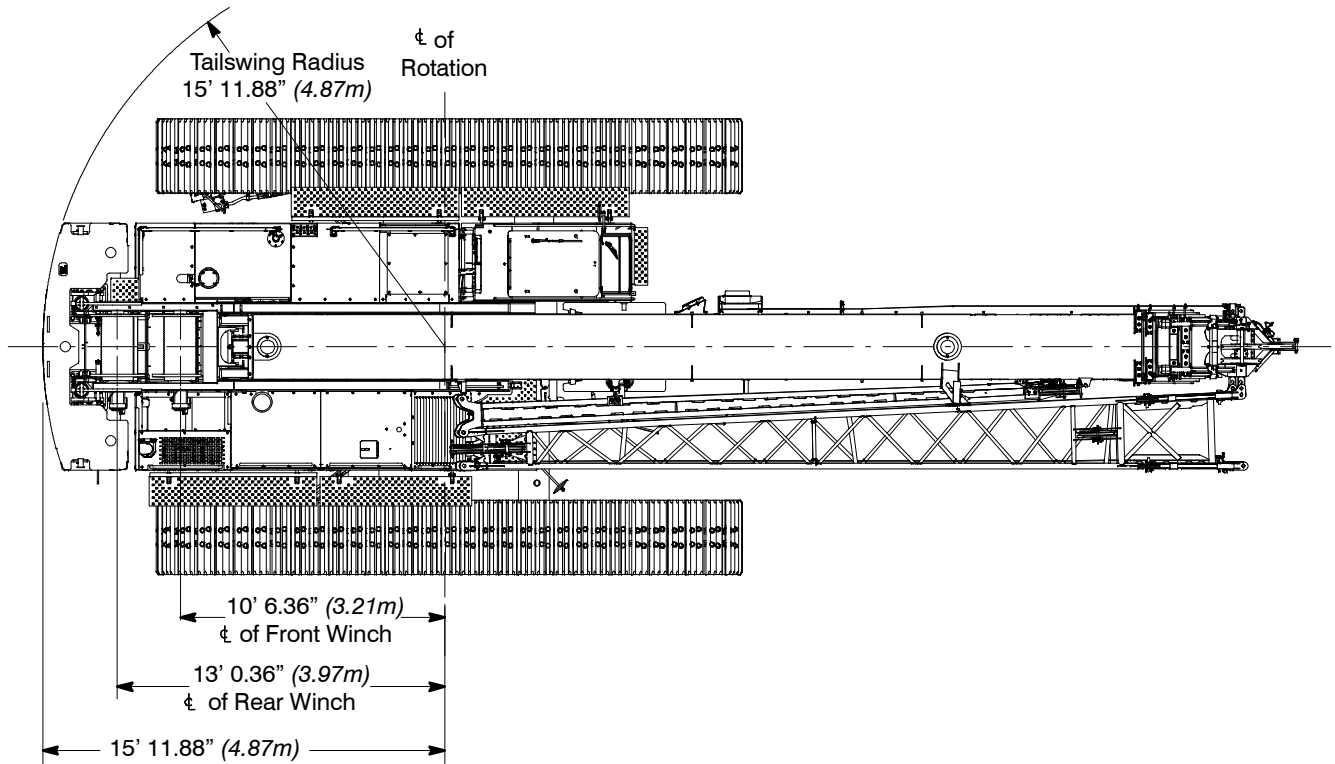


STERLING CRANE

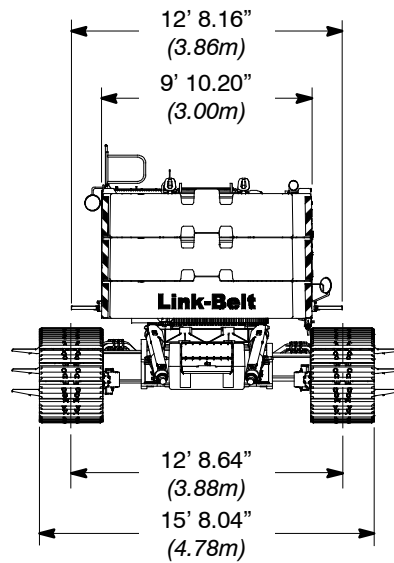


TRANSPORTATION SPECS - Crawler Cranes

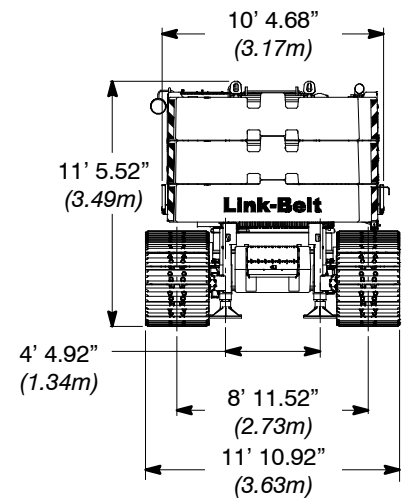
LINK-BELT MODEL TCC1100 - 110 TON CAPACITY



Extended Gauge



Intermediate Gauge



Retracted Gauge

STERLING CRANE



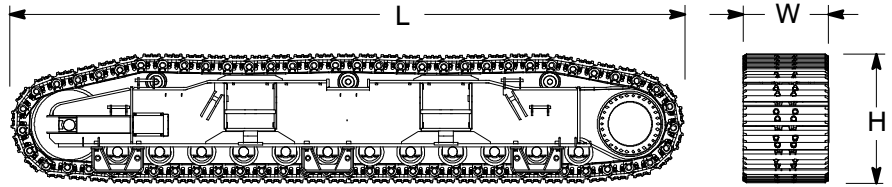
TRANSPORTATION SPECS - Crawler Cranes

LINK-BELT MODEL TCC1100 - 110 TON CAPACITY

Side Frames

Side Frames ^②

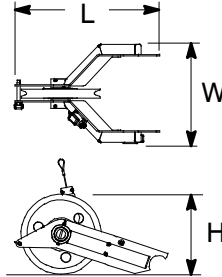
| | | |
|--------|-----------|------------|
| Length | 280.14 in | (7.12m) |
| Width | 35.84 in | (0.91m) |
| Height | 53.50 in | (1.36m) |
| Weight | 28,750 lb | (13 041kg) |



Auxiliary Lifting Sheave

Auxiliary Lifting Sheave ^①

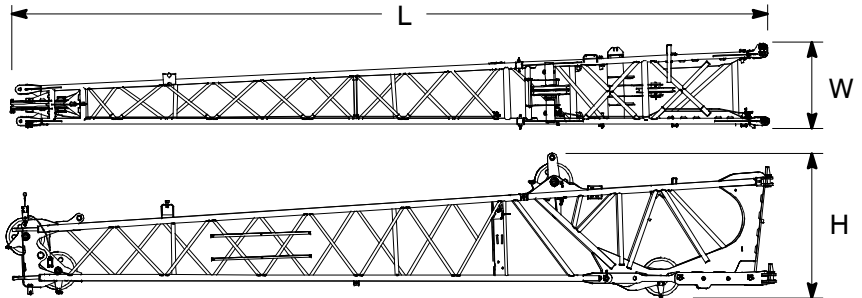
| | | |
|--------|----------|---------|
| Length | 11.28 in | (0.29m) |
| Width | 5.59 in | (0.14m) |
| Height | 4.75 in | (0.12m) |
| Weight | 120 lb | (54kg) |



Fly

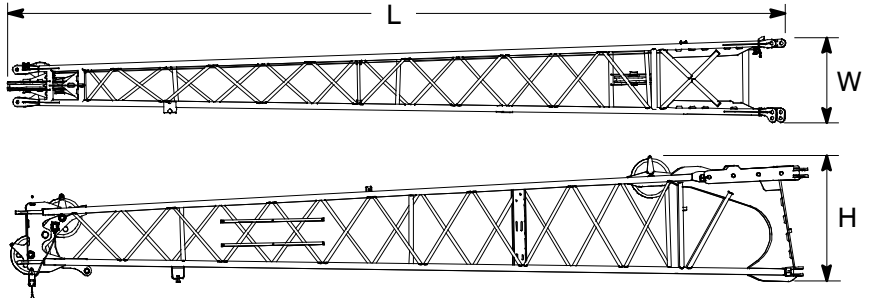
31 ft (9.4m) two Piece Lattice Fly (Optional Base) ^①

| | | |
|--------|------------|-----------|
| Length | 31 ft | (9.45m) |
| Width | 42.34 in | (1.08m) |
| Height | 6' 0.48 in | (1.84m) |
| Weight | 2,667 lb | (1 210kg) |



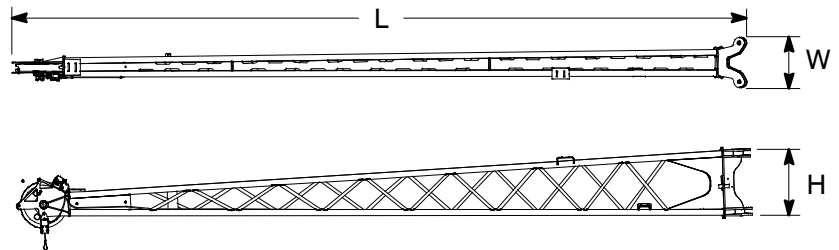
31 ft (9.4m) One Piece Lattice Fly (Base Fly) ^①

| | | |
|--------|----------|---------|
| Length | 31 ft | (9.45m) |
| Width | 32.75 in | (0.83m) |
| Height | 43.85 in | (1.11m) |
| Weight | 1,999 lb | (907kg) |



24 ft (7.3m) Lattice Fly Tip (Addition To Base Fly For 31 – 55 ft (9.4 – 16.7m) Bi-fold Fly) ^①

| | | |
|--------|----------|---------|
| Length | 24 ft | (7.32m) |
| Width | 16.63 in | (0.42m) |
| Height | 24.52 in | (0.62m) |
| Weight | 810 lb | (367kg) |



Number inside black circle "①" = # of components

* - Optional equipment



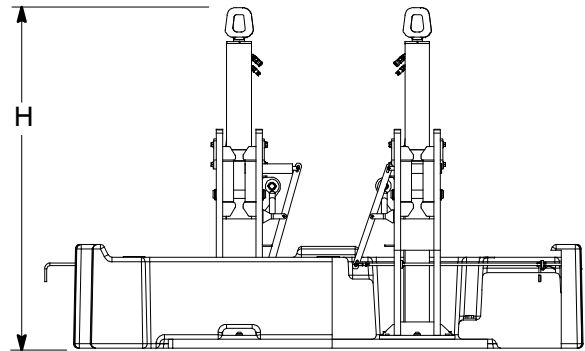
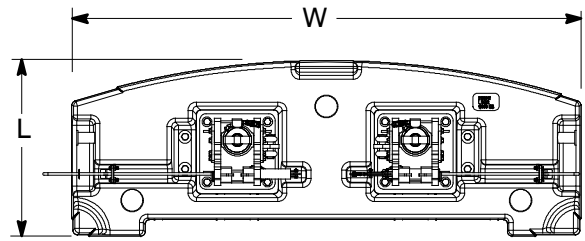
TRANSPORTATION SPECS - Crawler Cranes

LINK-BELT MODEL TCC1100 - 110 TON CAPACITY

Counterweights

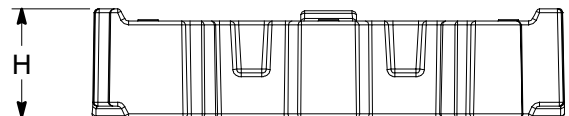
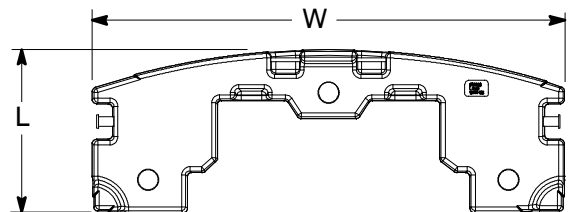
"A" Counterweight ①

| | | |
|--------|-------------|-----------|
| Length | 40.64 in | (1.03m) |
| Width | 9 ft 10 in | (3.00m) |
| Height | 6 ft 7.0 in | (2.00m) |
| Weight | 19,000 lb | (8 618kg) |



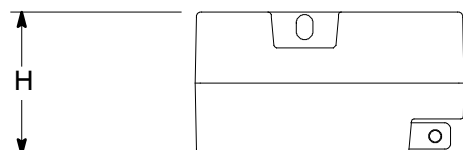
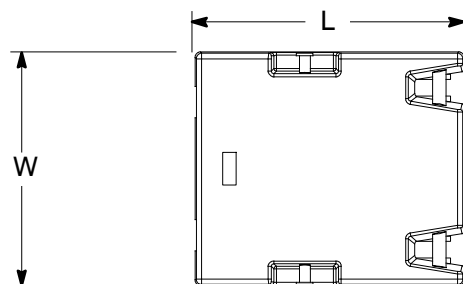
"B" & "C" Counterweights ②

| | | |
|--------|------------|-----------|
| Length | 40.7 in | (1.03m) |
| Width | 9 ft 10 in | (3.00m) |
| Height | 27.20 in | (0.69m) |
| Weight | 16,000 lb | (7 257kg) |



"A" Carbody Counterweights ②

| | | |
|--------|-----------|-----------|
| Length | 49.0 in | (1.24m) |
| Width | 42.5 in | (1.08m) |
| Height | 26.0 in | (0.66m) |
| Weight | 12,500 lb | (5 670kg) |



Number inside black circle "①" = # of components
 * - Optional equipment



TRANSPORTATION SPECS - Crawler Cranes

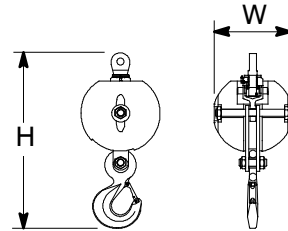
LINK-BELT MODEL TCC1100 - 110 TON CAPACITY

Hook Balls

12 Ton (10.9mt) Swivel

Hook Ball* 1

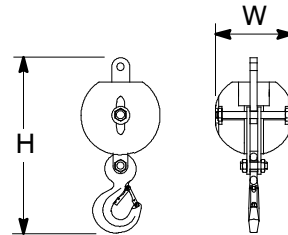
| | | |
|--------|----------|---------|
| Width | 17.93 in | (0.46m) |
| Height | 36.26 in | (0.92m) |
| Weight | 722 lb | (327kg) |



12 Ton (10.9mt) Non-Swivel

Hook Ball* 1

| | | |
|--------|----------|---------|
| Width | 17.93 in | (0.46m) |
| Height | 36.26 in | (0.92m) |
| Weight | 722 lb | (327kg) |

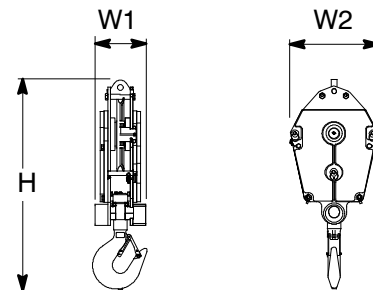


Hook Blocks

35 Ton (31.8mt)

1-Sheave Hook Block* 1

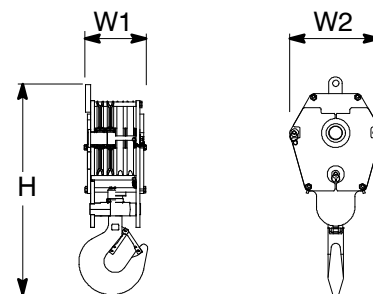
| | | |
|--------|----------|---------|
| Width1 | 11.19 in | (0.28m) |
| Width2 | 23.88 in | (0.61m) |
| Height | 57.31 in | (1.46m) |
| Weight | 1,100 lb | (499kg) |



50 Ton (45.4mt)

4-Sheave Hook Block* 1

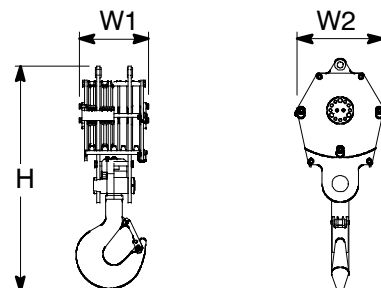
| | | |
|--------|----------|---------|
| Width1 | 15.81 in | (0.40m) |
| Width2 | 24 in | (0.61m) |
| Height | 57.35 in | (1.46m) |
| Weight | 1,195 lb | (542kg) |



80 Ton (72.6mt)

5-Sheave Hook Block* 1

| | | |
|--------|----------|---------|
| Width1 | 20 in | (0.51m) |
| Width2 | 24 in | (0.61m) |
| Height | 64.56 in | (1.64m) |
| Weight | 1,411 lb | (640kg) |



Number inside black circle "1" = # of components

* - Optional equipment



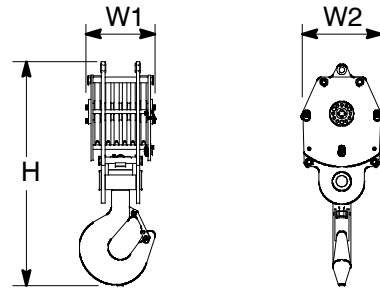
TRANSPORTATION SPECS - Crawler Cranes

LINK-BELT MODEL TCC1100 - 110 TON CAPACITY

100 Ton (90.7mt)

6-Sheave Hook Block* ①

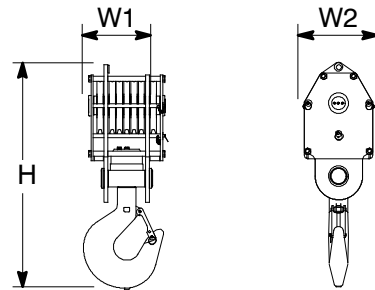
| | | |
|--------|----------|---------|
| Width1 | 20.94 in | (0.53m) |
| Width2 | 24 in | (0.61m) |
| Height | 67.61 in | (1.72m) |
| Weight | 1,750 lb | (794kg) |



140 Ton (127.0mt)

7-Sheave Hook Block* ①

| | | |
|--------|----------|-----------|
| Width1 | 23.10 in | (0.54m) |
| Width2 | 22.25 in | (0.57m) |
| Height | 72.28 in | (1.84m) |
| Weight | 2,394 lb | (1 086kg) |



Number inside black circle “①” = # of components

* – Optional equipment

STERLING CRANE



TRANSPORTATION SPECS - Crawler Cranes

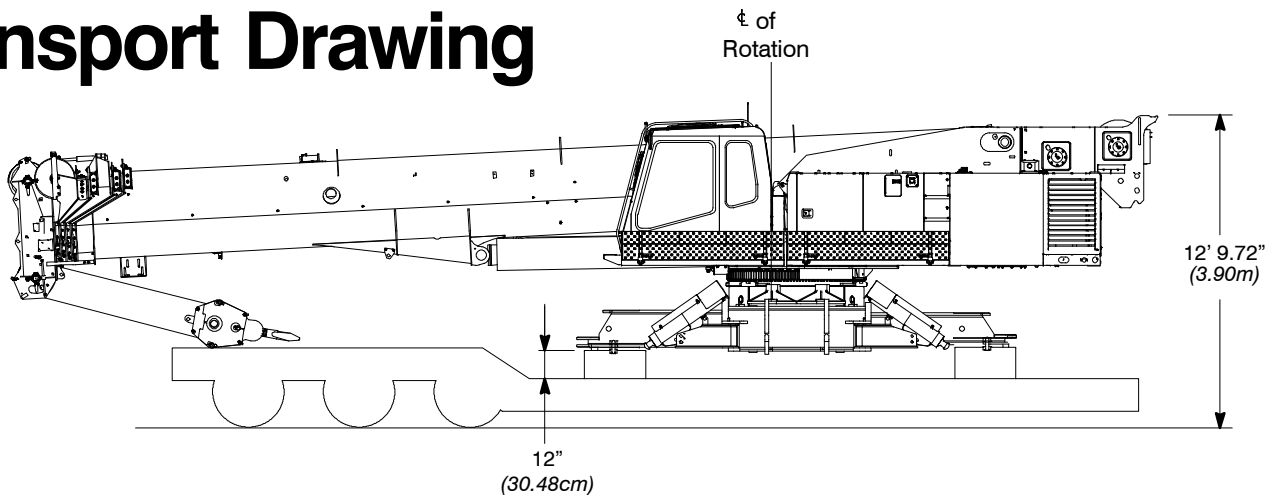
LINK-BELT MODEL TCC1100 - 110 TON CAPACITY

Working Weights

| Option | Description | Gross Weight lb (kg) | Ground Bearing Pressure (on soft ground) psi (kg/cm ²) |
|--------|--|-------------------------|--|
| 1 | Base crane, "ABC" counterweight, 2 piece carbody counterweight, 850 ft (259.0m) type "ZB" main wire rope, 500 ft (152.4m) type "ZB" auxiliary wire rope, 2-piece fly, 80 ton (72.6mt) 5 sheave hook block, and 12 ton (10.89mt) hook ball. and a 200 lb (90.7kg) operator. | 223,000 (101 151kg) | 13.26 (0.93) |

Notes: Ground bearing pressure is based on the total weight distributed evenly over the track contact area.

Transport Drawing



Transport Weight – 89,000 lb (40 370kg)

Base crane, 850 ft (259.08m) type "ZB" main wire rope, 500 ft (152.40m) type "ZB" auxiliary wire rope, 2-piece fly, 80 ton (72.6mt) 5 sheave hook block, and 12 ton (10.89mt) hook ball

Load Hoist Performance

| Main (Rear) and Auxiliary (Front) Winches – 7/8 in (22mm) Rope | | | | | | | | | | |
|--|-------------------|---------|-------------------|-------|-----------------|-------|-------|------|-------|-------|
| Layer | Maximum Line Pull | | Normal Line Speed | | High Line Speed | | Layer | | Total | |
| | lb | kg | ft/min | m/min | ft/min | m/min | ft | m | ft | m |
| 1 | 21,120 | 9 579.9 | 174 | 53.0 | 348 | 106.1 | 125 | 38.1 | 125 | 38.1 |
| 2 | 19,056 | 8 643.7 | 193 | 58.8 | 386 | 117.7 | 138 | 42.0 | 263 | 80.2 |
| 3 | 17,359 | 7 873.9 | 211 | 64.3 | 423 | 128.9 | 152 | 46.3 | 415 | 126.5 |
| 4 | 15,940 | 7 230.3 | 230 | 70.1 | 461 | 140.5 | 165 | 50.3 | 580 | 179.2 |
| 5 | 14,735 | 6 683.7 | 249 | 75.9 | 499 | 152.1 | 179 | 54.6 | 759 | 231.3 |
| 6 | 13,700 | 6 214.2 | 268 | 81.7 | 537 | 163.7 | 192 | 58.5 | 951 | 289.9 |

| Wire Rope Application | | Diameter | | Type | Maximum Permissible Load | |
|-------------------------|----------|----------|----|--|--------------------------|---------|
| | | in | mm | | lb | kg |
| Main (Rear) Winch | Standard | 7/8 | 22 | 36x7 rotation resistant – right regular lay or right lang lay (Type ZB) | 20,920 | 9 489.2 |
| | Optional | 7/8 | 22 | 18x19 rotation resistant – right regular lay or right lang lay (Type RB) | 17,520 | 7 946.9 |
| Auxiliary (Front) Winch | Standard | 7/8 | 22 | 36x7 rotation resistant – right regular lay (Type ZB) | 20,920 | 9 989.2 |
| | Optional | 7/8 | 22 | 18x19 rotation resistant – right regular lay (Type RB) | 17,520 | 7 946.9 |