

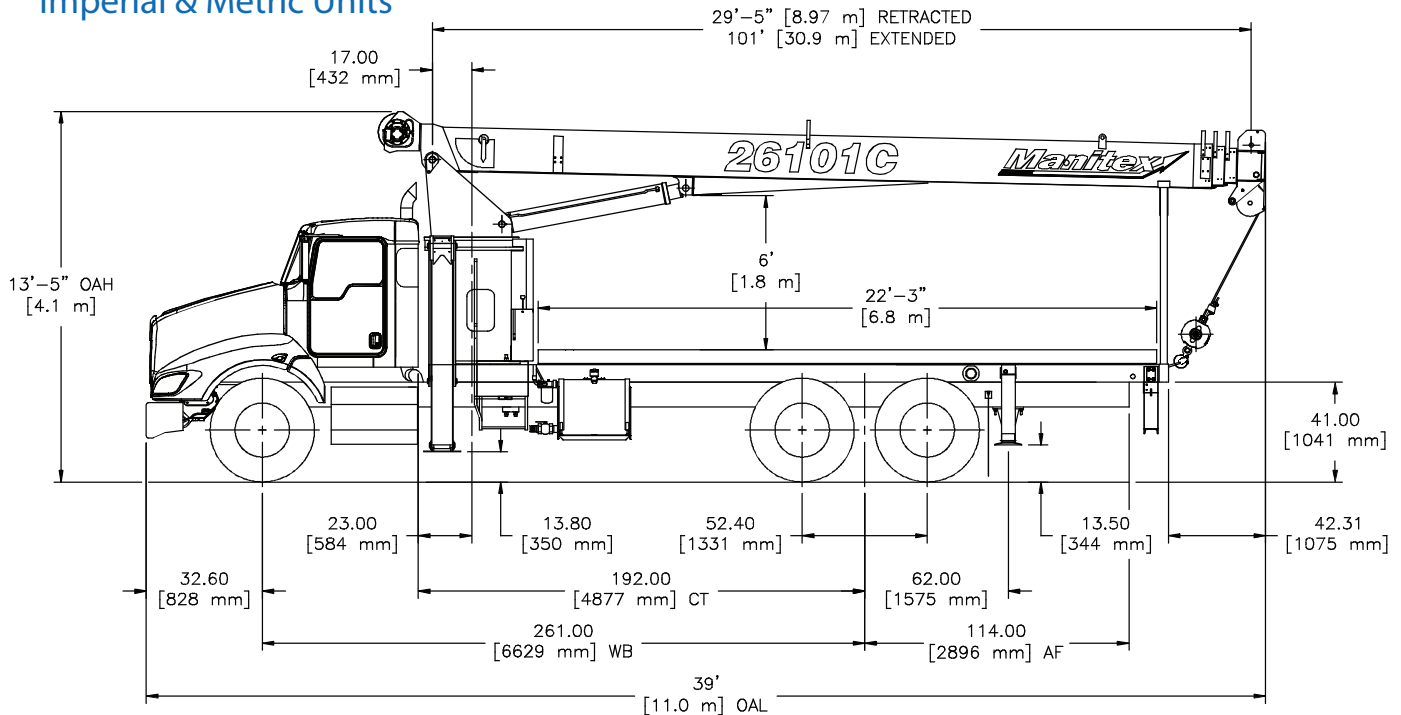


LIFTING CHARTS - Boom Truck

MANITEX MODEL 26101C - 26 TON CAPACITY

CRANE DIMENSIONS

Imperial & Metric Units



CHASSIS DATA

Wheelbase (WB):	261 in. (6,629 mm)	Minimum truck axle weight - front*	8,000 lbs. (3,629 kg)
Cab to Tandem (CT) :	192 in. (4,877 mm)	Minimum truck axle weight - rear*	8,000 lbs. (3,629 kg)
After frame (AF):	114 in. (2,896 mm)	Nominal frame W:	34 - 35 in. (864 - 889 mm)
Frame section modulus at 180°/360° rotation (min.)	5.9 in ³ - 110,000 psi (758,422 kPa)	Front axle gross weight rating:	16,000lb (7,257 kg)
		Min. Rear axle gross weight rating:	40,000 lbs. (18,14 kg)

CRANE WEIGHTS

Basic crane weight:	18,970 lbs. (8,605 kg)
Fixed jib 29 ft. (8,8 m):	630 lbs.
Flatbed 22 Ft (6,7 mm):	2,000 lbs. (907 kg)

* Flatbed weight not included in crane weight.

Notes: The addition of a front stabilizer is highly recommended and may be required on some installations - consult Manitex.

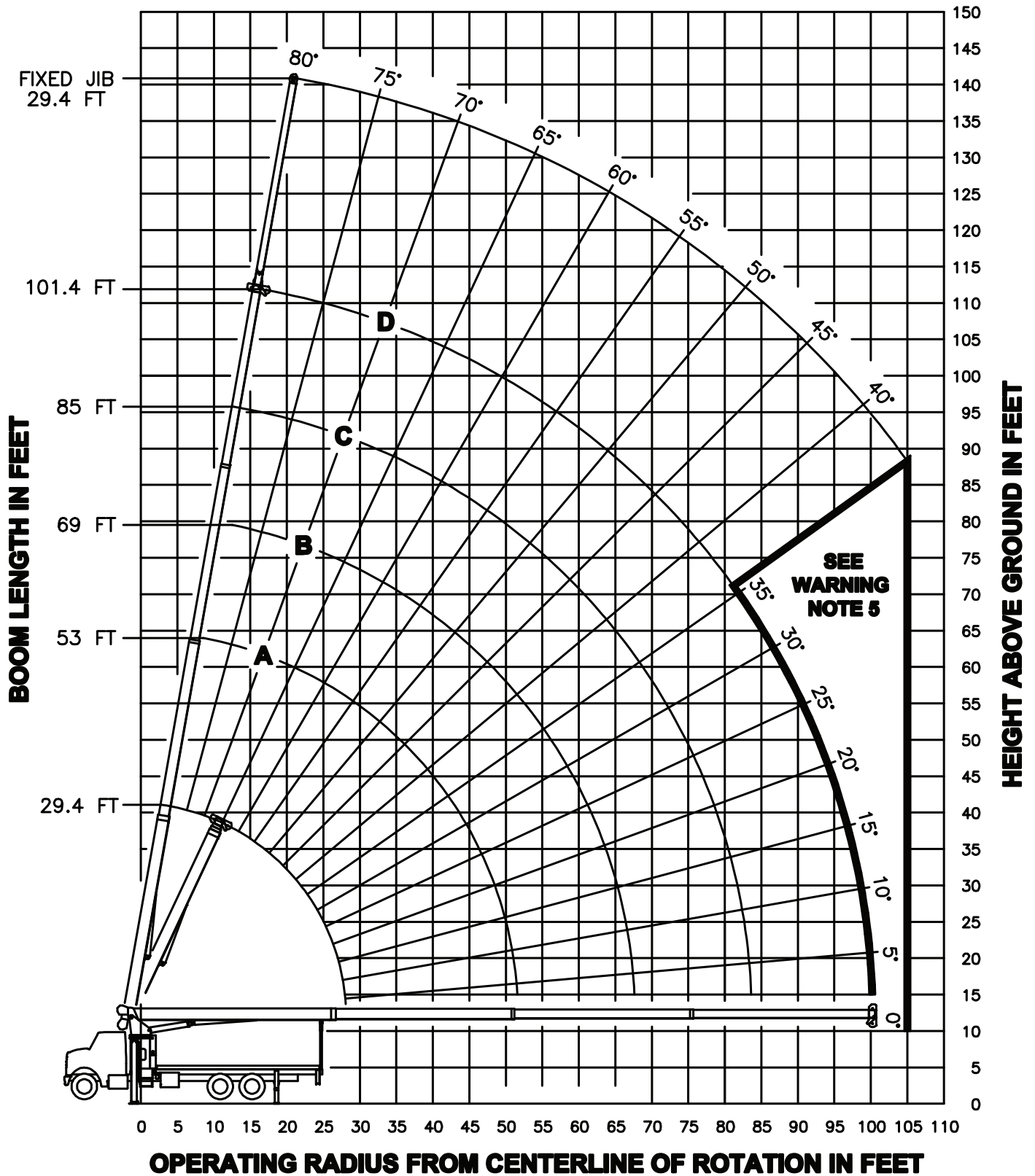
STERLING CRANE



LIFTING CHARTS - Boom Truck

MANITEX MODEL 26101C - 26 TON CAPACITY

RANGE DIAGRAM



STERLING CRANE



LIFTING CHARTS - Boom Truck

MANITEX MODEL 26101C - 26 TON CAPACITY

LOAD CHART: Main Boom & Jib

4-section Boom 29.44 ft. - 101.44 ft.

21'-6" (6,5 M)

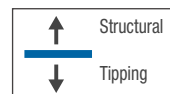
372° Non-continuous

Jib 29 ft.

Load Ratings in LBS with Outriggers and Stabilizers Extended										Jib Load Ratings in LBS with Outriggers and Stabilizers Extended		
LMI Code #1										LMI Code #2		
Loaded Boom Angle (ft.)	Loaded Boom Angle	Boom Length & Marker								Loaded Boom Angle (ft.)	Fixed Jib	
			A (lbs.)	B (lbs.)	C (lbs.)	D (lbs.)	Jib Length for All Boom Lengths					
			53 ft.	69 ft.	85 ft.	101.44 ft.						
5	80	52,000										
8	74	37,390										
10	70	31,750										
12	66	27,740	78	14,000								
14	61	24,720	76	14,000	80	14,000						
17	54	21,200	72	14,000	78	12,880						
20	46	18,030	69	13,700	75	11,430	79	8,920				
25	29	14,120	63	11,070	71	9,460	75	8,000	79	6,000		
30			56	9,170	66	8,210	72	7,070	76	5,500	3,000	
35			49	7,850	61	6,970	68	6,130	73	4,980	2,840	
40			41	6,120	56	5,980	65	5,320	70	4,490	2,620	
45			31	4,890	51	5,020	61	4,640	67	4,000	2,420	
50			17	3,950	45	4,090	57	4,070	64	3,580	2,230	
55					38	3,370	52	3,440	61	3,200	2,020	
60					30	2,790	47	2,860	57	2,850	1,840	
65					19	2,310	42	2,390	54	2,430	1,670	
70							36	1,990	50	2,040	1,520	
75							29	1,650	45	1,700	1,380	
80							20	1,360	41	1,420	1,230	
85									36	1,160	1,080	
90									30	950	950	
95									22	750	830	
100									3	570	690	
105											530	
		340 lbs.	190 lbs.	150 lbs.	120 lbs.	100 lbs.	Deductions for stowed fixed jib					

NOTES:

- Loads based on crane on fully extended outriggers
- All "on outriggers" loads are based on 85% tipping
- Loads above heavy line are based on structural rating
- Loads below heavy line are based on tipping rating



Data published herein is intended as a guide only. Crane operations is subject to machine specific load charts and information.

STERLING CRANE



LIFTING CHARTS - Boom Truck

MANITEX MODEL 26101C - 26 TON CAPACITY

LMI OPERATING CODES

Code	Crane Configuration	Outrigger Configuration	Area of Operation
#1	Main Boom	Fully Extended	372° Non-continuous
#2	Fixed Jib	Fully Extended	372° Non-continuous
#5	Personnel lifting platform on main boom	Fully Extended	372° Non-continuous
#6	Personnel lifting platform on fixed jib	Fully Extended	372° Non-continuous

WARNING: Lifting personnel from extended jib is not approved.

REEVING DIAGRAM

ALLOWABLE LINE PULL							WARNING
1 PART LINE	2 PART LINE	3 PART LINE	4 PART LINE	5 PART LINE	6 PART LINE	7 PART LINE	
8500 LBS	17000 LBS	25500 LBS	34000 LBS	42500 LBS	51000 LBS	52000 LBS	
7400 LBS	14800 LBS	22200 LBS	29600 LBS	37000 LBS	44400 LBS	51800 LBS	

WARNING

ANTI-TWO-BLOCK SYSTEM MUST BE IN GOOD OPERATING CONDITION BEFORE OPERATING CRANE.

REFER TO THE OWNER'S MANUAL.

KEEP AT LEAST 3 WRAPS OF LOAD LINE ON THE DRUM AT ALL TIMES.

9/16" 6X25 IWRC (3.5:1 SF) - 29750 LBS MIN BREAKING STRENGTH

9/16" ROT RESISTANT (5.0:1 SF) - 37000 LBS MIN BREAKING STRENGTH

DEDUCTIONS FROM RATED LOADS FOR LOAD HANDLING DEVICES SUPPLIED BY MANITEX.

AUXILIARY BLOCK	-----	50 LBS
AUXILIARY SHEAVE	-----	50 LBS
OVERHAUL BALL	-----	SEE OVERHAUL BALL MFR. NAMEPLATE
LOAD BLOCK	-----	SEE BLOCK MFR. NAMEPLATE
HOSE REEL	-----	140 LBS
SWING AROUND JIB	-----	SEE LOAD CHART

WARNING

LIFTING OFF THE MAIN BOOM POINT WHILE THE JIB IS ERECTED IS NOT INTENDED OR APPROVED.