

STERLING CRANE



TRANSPORTATION SPECS - Boom Truck

MANITEX MODEL 26101C - 26 TON CAPACITY



THE CM260 TELESCOPIC CRANE

Maximize Rental Use and Value

The CM260 telescopic crane strikes the perfect balance between the three things customers tell us they care about most in a rental crane: features, cost and usability. Competitively priced and packed with standard features designed to save time and money.

- Change line speed on the fly and minimize rope stacking with its 2-speed burst of speed (combined flow) planetary hoist with grooved drum and negative draft flange.
- Minimize maintenance costs with replaceable, self-lubricating boom slider pads equipped with teflon inserts.
- Get active and immediate feedback on load with the integrated load-moment indicator system.

Other features include:

- 26-ton Capacity @ 5 ft. radius
- 101 ft. 4-Section proportional boom
- 112 ft max boom tip height
- Optional 29' Fixed Jib
- Wired anti-two block with lockout ATB
- Removable boom rest

USER-FRIENDLY CONTROLS

Dual operator stations are equipped with engine start/stop, foot throttle, signal horn, boom angle indicator, load chart and range diagram.



OUTRIGGER DEPLOYMENT

An audible alarm sounds as outriggers are being deployed, and indicator lights verify when they are fully extended.

LOAD MOMENT INDICATOR

The load-moment indicator provides audio/visual warning or shuts down the machine when lift limitations are about to be exceeded.

INCREASE PROFITABILITY

The versatile CM260, designed to be used with a commercial carrier, helps both owners and operators make the most of their investment.

- Travel to and between jobs at highway speed.
- Ride in comfort with a carrier suspension designed for highway driving.
- Get repairs done quickly and by qualified technicians at commercial truck centers.

STERLING CRANE

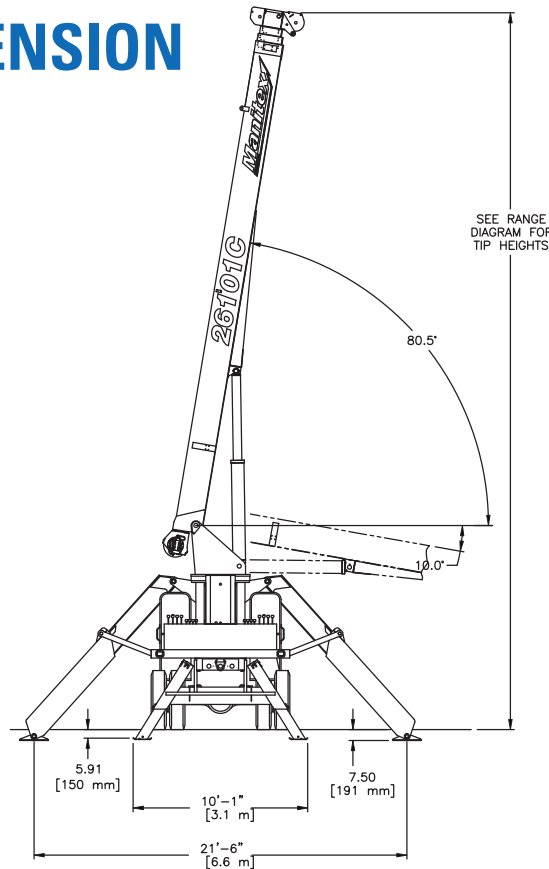


LIFTING TRANSPORTATION SPECS - Boom Truck

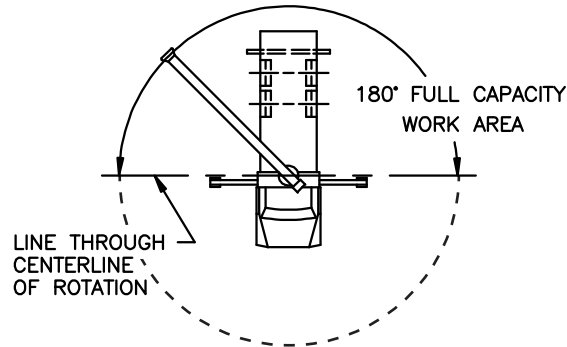
MANITEX MODEL 26101C - 26 TON CAPACITY

OUTRIGGER EXTENSION

Imperial & Metric Units



AREA OF OPERATION



Deductions from rated loads for load handling devices supplied by Manitex

Note: 360 degree Area of Operation when equipped with optional Front Bumper Stabilizer.

Auxiliary Block	50 lbs.
Auxiliary Sheave	50 lbs.
Overhaul ball	See overhaul ball mfr. nameplate
Load blocks	See block mfr. nameplate
Hose reel	140 lbs.
Swing-around jib	See load chart

WARNING: Lifting off the main boom point while the jib is erected is not intended or approved.

Data published herein is intended as a guide only. Crane operations is subject to machine specific load charts and information.

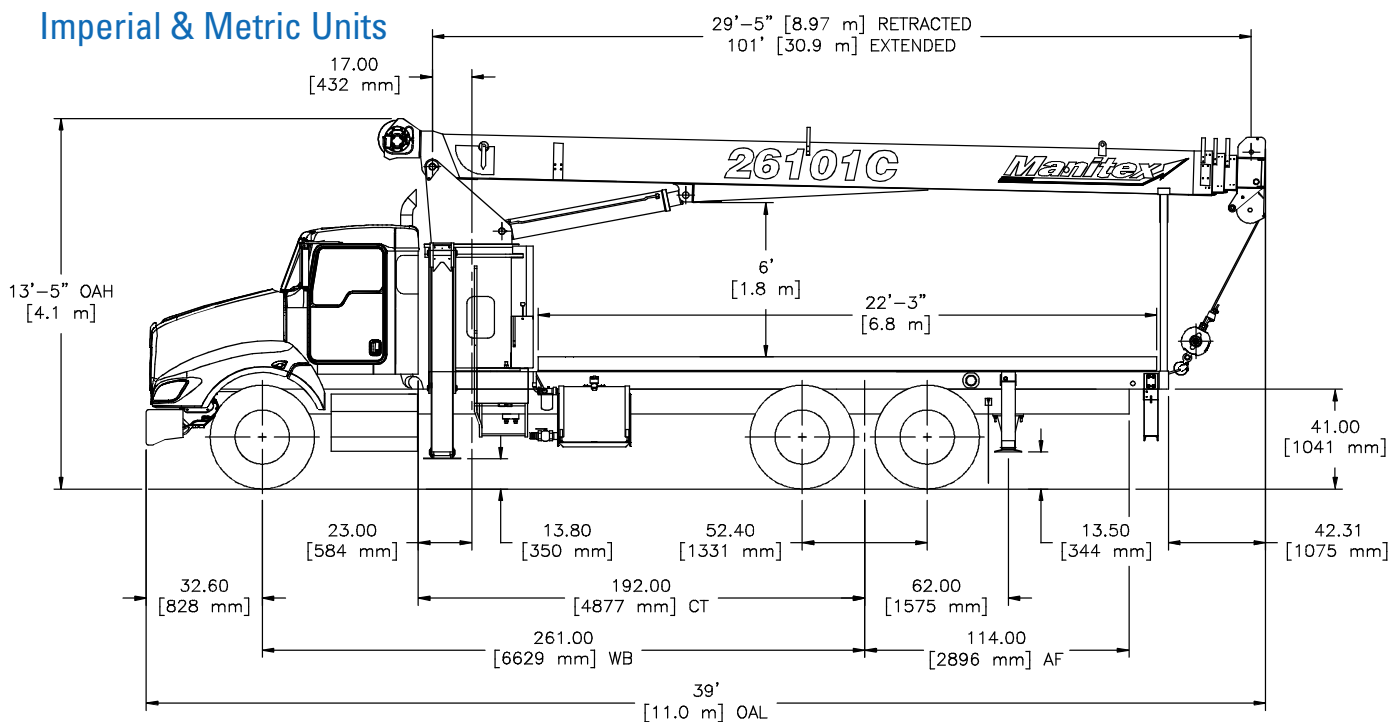
STERLING CRANE



LTRANSPORTATION SPECS - Boom Truck

MANITEX MODEL 26101C - 26 TON CAPACITY

CRANE DIMENSIONS



CHASSIS DATA

Wheelbase (WB):	261 in. (6,629 mm)	Minimum truck axle weight - front*	8,000 lbs. (3,629 kg)
Cab to Tandem (CT) :	192 in. (4,877 mm)	Minimum truck axle weight - rear*	8,000 lbs. (3,629 kg)
After frame (AF):	114 in. (2,896 mm)	Nominal frame W:	34 - 35 in. (864 - 889 mm)
Frame section modulus at 180°/360° rotation (min.):	15.9 in. ³ - 110,000 psi (758,422 kPa)	Front axle gross weight rating:	16,000lb (7,257 kg)
		Min. Rear axle gross weight rating:	40,000 lbs. (18,14 kg)

CRANE WEIGHTS

Basic crane weight:	18,970 lbs. (8,605 kg)
Fixed jib 29 ft. (8,8 m):	630 lbs.
Flatbed 22 Ft (6,7 mm):	2,000 lbs. (907 kg)

* Flatbed weight not included in crane weight.

Notes: The addition of a front stabilizer is highly recommended and may be required on some installations - consult Manitex.

Data published herein is intended as a guide only. Crane operations is subject to machine specific load charts and information.

STERLING CRANE



TRANSPORTATION SPECS - Boom Truck

MANITEX MODEL 26101C - 26 TON CAPACITY

RANGE DIAGRAM

