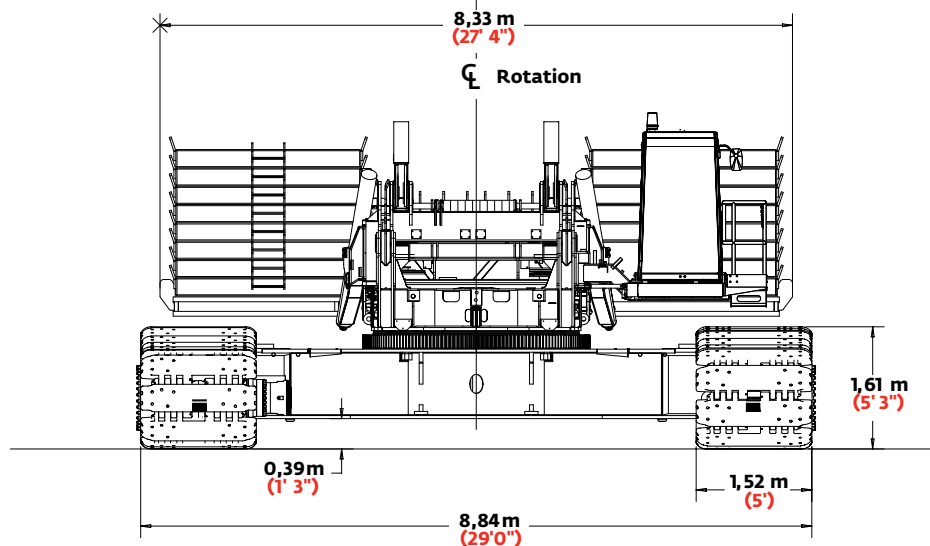
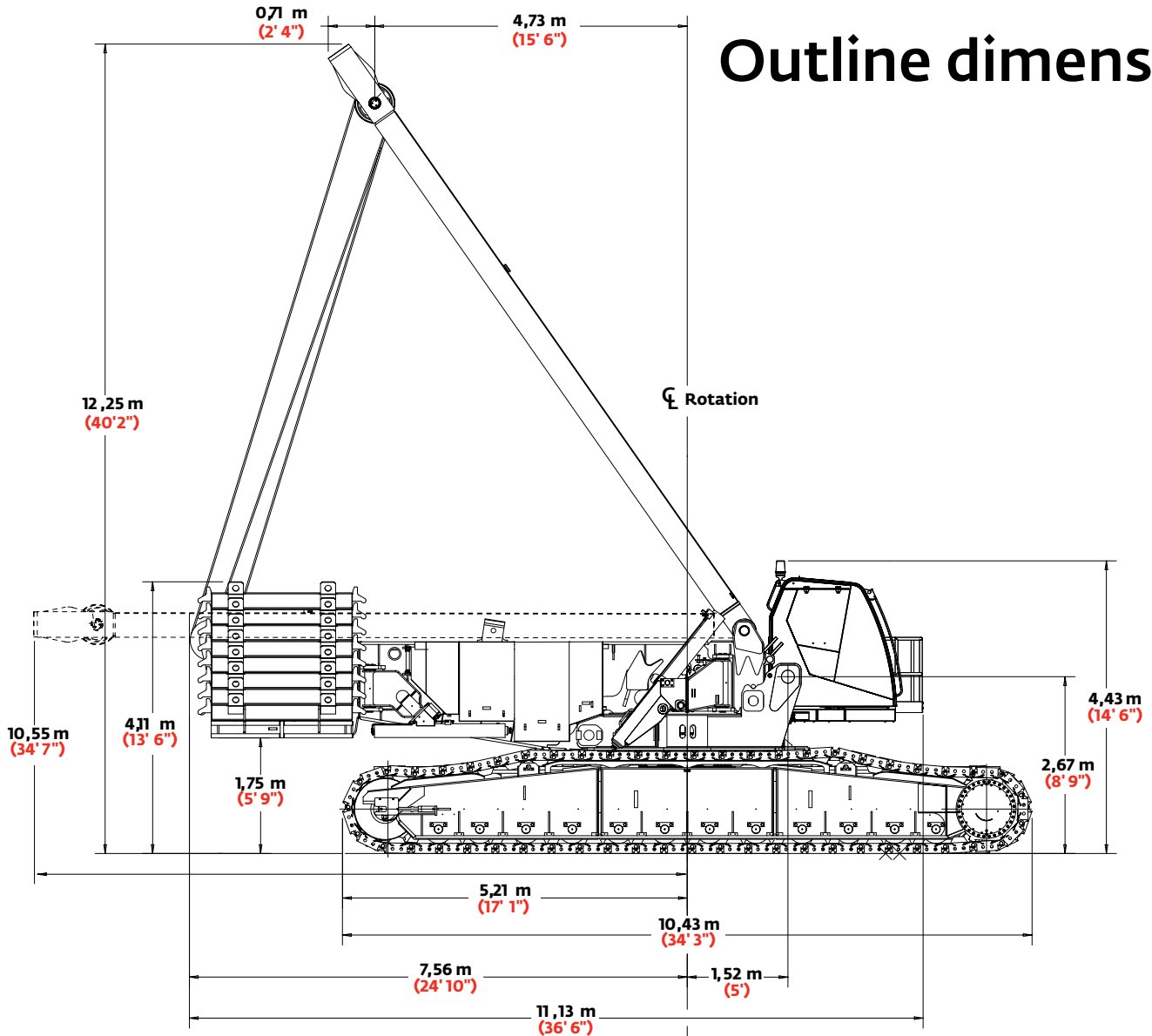




TRANSPORTATION SPECS - Crawler Cranes

MANITOWOC MODEL 16000 - 440 TON CAPACITY

Outline dimensions

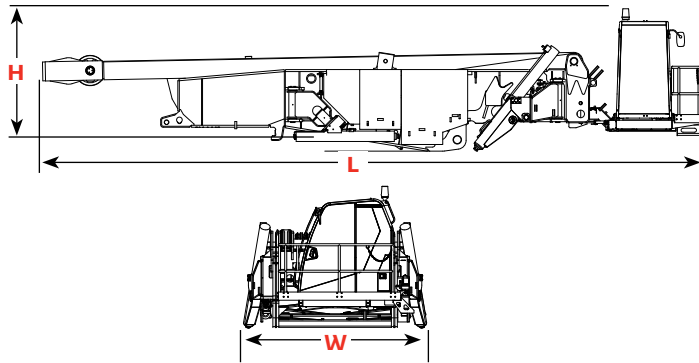




TRANSPORTATION SPECS - Crawler Cranes

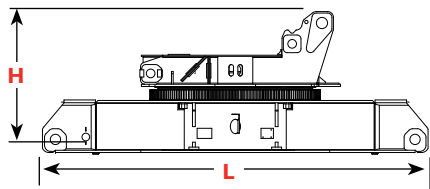
MANITOWOC MODEL 16000 - 440 TON CAPACITY

Outline dimensions



Rotating bed assembly

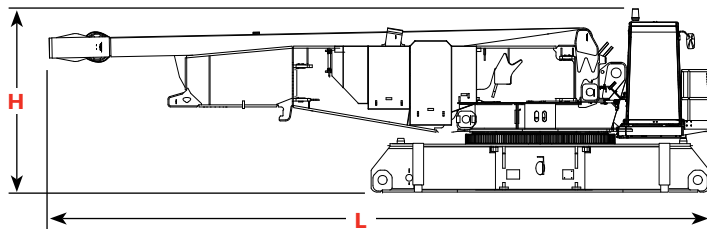
Length	13,25 m	43' 6"
Width	3,20 m	10' 6"
Height	2,87 m	9' 5"
Weight	39 612 kg	87,330 lb



Carbody assembly

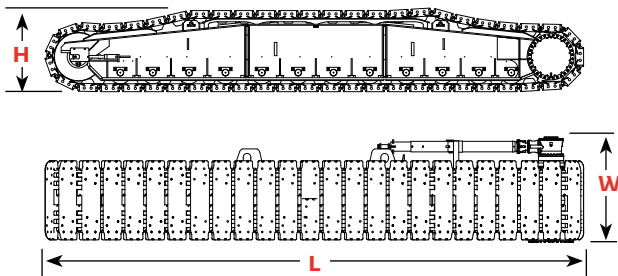
Length	6,78 m	22' 3"
Width	3,00 m	9' 10"
Height	2,52 m	8' 3"
Weight	28 161 kg	62,085 lb

Note: Weight includes rotating bed adapter frame with bearing turntable, four swing drives, and carbody.



Rotating bed and carbody assembly (decked version)

Length	6,78 m	22' 3"
Width	3,00 m	9' 10"
Height	3,20 m	10' 6"
Weight	64 982 kg	143,260 lb



Crawlers

Length	10,43 m	34' 3"
Width	2,03 m	6' 8"
Height	1,61 m	5' 3"
Weight	32 665 kg	72,015 lb

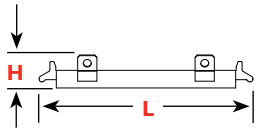
▶ Option



TRANSPORTATION SPECS - Crawler Cranes

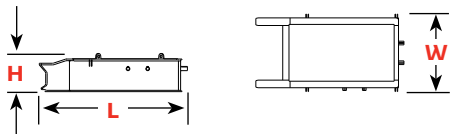
MANITOWOC MODEL 16000 - 440 TON CAPACITY

Outline dimensions



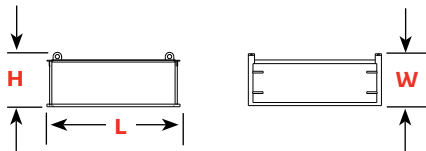
Upper counterweight

Series 1		x 10
Series 2		x 14
Series 3		x 16
Length	2,54 m	8' 4"
Width	2,61 m	8' 7"
Height	0,41 m	1' 4"
Weight	8 164 kg	18,000 lb



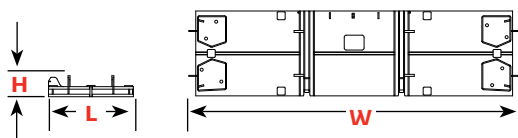
Carbody center counterweight

Series 2		x 2
Series 3		x 2
Length	3,45 m	11' 4"
Width	1,80 m	5' 11"
Height	0,89 m	2' 11"
Weight	13 607 kg	30,000 lb



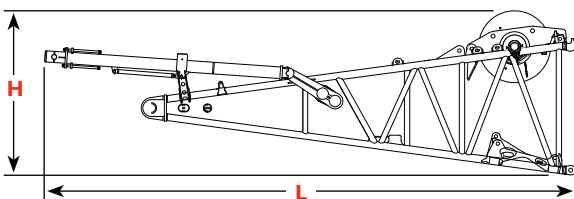
Carbody side counterweight

Series 3		x 4
Length	2,18 m	7' 2"
Width	0,86 m	2' 10"
Height	0,89 m	2' 11"
Weight	6 803 kg	15,000 lb



Upper counterweight tray

Length	2,14 m	7' 0"
Width	8,33 m	27' 4"
Height	0,53 m	1' 9"
Weight	19 958 kg	44,000 lb



No. 58 Boom butt, drum 1, luffing drum, wire rope

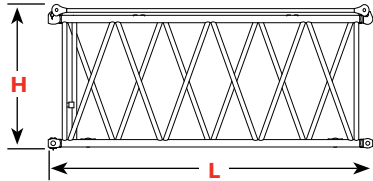
		x 1
Length	10,13 m	33' 3"
Width	2,96 m	9' 9"
Height	3,10 m	10' 2"
Weight	21 609 kg	47,640 lb



TRANSPORTATION SPECS - Crawler Cranes

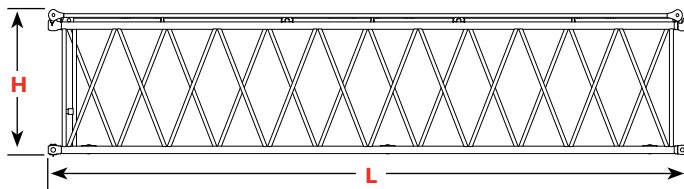
MANITOWOC MODEL 16000 - 440 TON CAPACITY

Outline dimensions



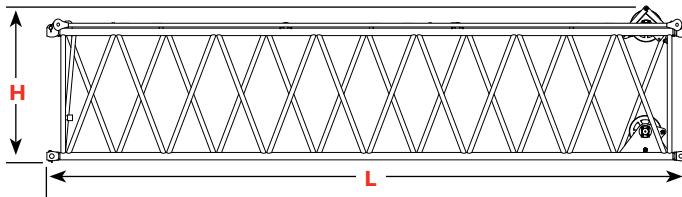
No. 58 boom insert 6,0 m (19' 8") and straps x 1

Length	6,19 m	20' 3"
Width	2,96 m	9' 9"
Height	2,67 m	8' 9"
Weight	2 562 kg	5,650 lb



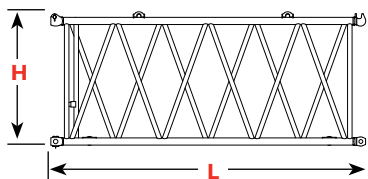
No. 58 boom insert 12,0 m (39' 5") and straps x 1

Length	12,19 m	40' 0"
Width	2,96 m	9' 9"
Height	2,65 m	8' 8"
Weight	4 236 kg	9,340 lb



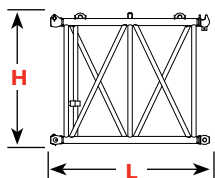
No. 58 boom insert heavy 12,0 (39' 5") with sheave x 1

Length	12,19 m	40' 0"
Width	2,96 m	9' 9"
Height	2,67 m	8' 9"
Weight	5 595 kg	12,335 lb



No. 58 WA boom insert 6,0 m (19' 8") and straps x 1

Length	6,19 m	20' 4"
Width	2,96 m	9' 9"
Height	2,67 m	8' 9"
Weight	2 690 kg	5,930 lb



No. 58 WA boom insert 3,0 m (9' 10") and straps x 1

Length	3,19 m	10' 6"
Width	2,96 m	9' 9"
Height	2,67 m	8' 9"
Weight	1 599 kg	3,525 lb

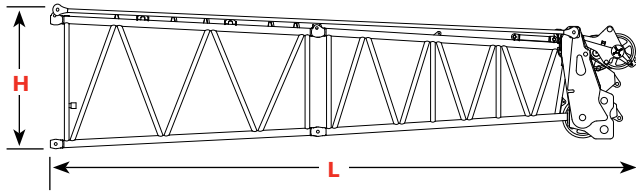
Option



TRANSPORTATION SPECS - Crawler Cranes

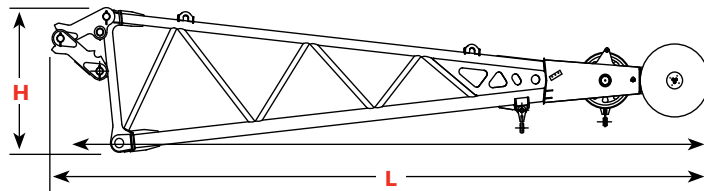
MANITOWOC MODEL 16000 - 440 TON CAPACITY

Outline dimensions



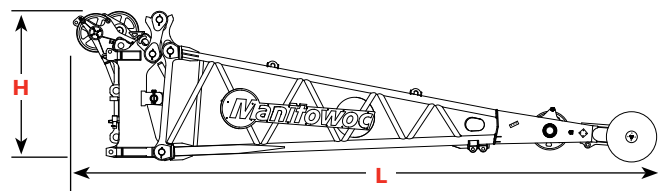
No. 58 boom top 5,0 m (16' 5") with 5,0 (16' 5") transitional insert and straps x 1

Length	11,41 m	37' 5"
Width	2,96 m	9' 9"
Height	2,67 m	8' 9"
Weight	11 373 kg	25,075 lb



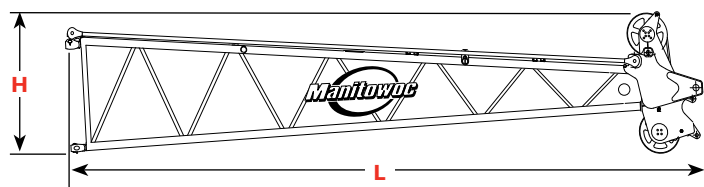
No. 58 extended upper boom point 7,0 m (23' 0") x 1

Length	9,52 m	31' 3"
Width	2,60 m	8' 6"
Height	1,99 m	6' 6"
Weight	3 674 kg	8,100 lb



No. 58 WA boom cap and No. 58 WA extended upper boom point x 1

Length	11,50 m	37' 9"
Width	2,70 m	8' 10"
Height	2,97 m	9' 9"
Weight	8 519 kg	18,780 lb



No. 59 luffing jib top 11,0 (36' 1") x 1

Length	11,95 m	39' 2"
Width	2,69 m	8' 10"
Height	2,54 m	8' 4"
Weight	6 015 kg	13,260 lb

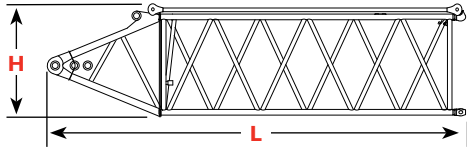
▶ Option



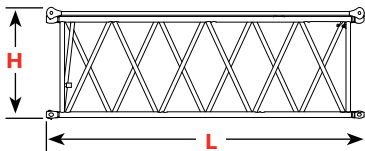
TRANSPORTATION SPECS - Crawler Cranes

MANITOWOC MODEL 16000 - 440 TON CAPACITY

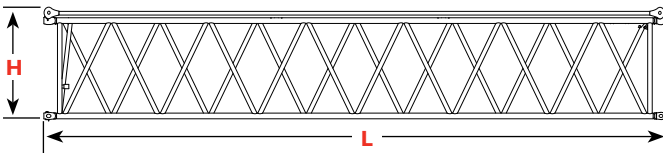
Outline dimensions



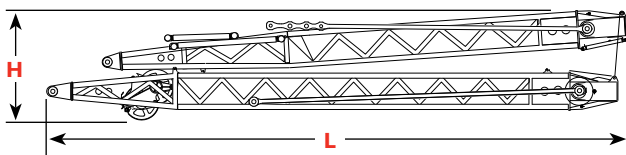
No. 59 luffing jib butt	7,0 (23' 0")		x 1
Length	7,15 m	23' 6"	
Width	2,69 m	8' 10"	
Height	2,17 m	7' 1"	
Weight	2 722 kg	6,000 lb	



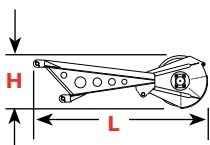
No. 59 luffing jib insert	6,0 (19' 8")		x 1
Length	6,19 m	20' 3"	
Width	2,69 m	8' 10"	
Height	2,17 m	7' 1"	
Weight	1 685 kg	3,715 lb	



No. 59 luffing jib insert	12,0 (39' 5")		x 1
Length	12,19 m	40' 0"	
Width	2,69 m	9' 9"	
Height	2,17 m	7' 1"	
Weight	2 928 kg	6,455 lb	



No. 59 luffing jib strut with point sheaves and straps	11,5 m (37' 9")		x 1
Length	12,46 m	40' 11"	
Width	2,69 m	8' 10"	
Height	2,27 m	7' 5"	
Weight	9 287 kg	20,475 lb	



No. 59 luffing jib upper point roller assembly	11,5 m (37' 9")		x 1
Length	2,64 m	8' 8"	
Width	0,41 m	1' 4"	
Height	0,81 m	2' 8"	
Weight	460 kg	1,014 lb	

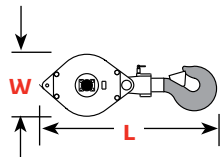
Option



TRANSPORTATION SPECS - Crawler Cranes

MANITOWOC MODEL 16000 - 440 TON CAPACITY

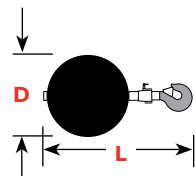
Outline dimensions



Hook block for 28 mm (1-1/8") wire rope

Capacity	410 mt	450 t	Length	3,37 m	11' 1"
Weight	9 661 kg	21,300 lb	Width	1,19 m	3' 11"
Capacity	317 mt	350 t	Length	2,63 m	8' 8"
Weight	7 892 kg	17,400 lb	Width	1,15 m	3' 9"
Capacity	227 mt	250 t	Length	2,72 m	8' 11"
Weight	5 257 kg	11,590 lb	Width	0,93 m	3' 0"
Capacity	182 mt	200 t	Length	2,65 m	8' 8"
Weight	4308 kg	9,500 lb	Width	0,87 m	2' 10"
Capacity	100 mt	110 t	Length	2,28 m	7' 6"
Weight	3 404 kg	7,500 lb	Width	0,86 m	2' 10"
Capacity	41 mt	45 t*	Length	1,90 m	6' 3"
Weight	1 179 kg	2,600 lb	Width	0,91 m	3' 0"

*Assembly block



Weight ball

Capacity/Swivel	18 mt	20 t	Diameter	0,47 m	1' 7"
Weight	771 kg	1,700 lb	Length	1,23 m	4' 0"



TRANSPORTATION SPECS - Crawler Cranes

MANITOWOC MODEL 16000 - 440 TON CAPACITY

Transport data

Model 16000 trailer load out summary

Weight each item	No. 58 Boom 108 m (354 ft) with No. 58 extended upper boom point 7 m (23 ft)																			
	Quantity on trailer load #																			
Item	kg (lb)	1	2	3	4	5	6	7	8	9	10	11	12	13	14	15	16	17	18	19
Upperworks module	39 612 (87,330)	1																		
Carbody and adapter	28 161 (62,085)		1																	
Crawler assembly	32 665 (72,015)			1	1															
Counterweight tray	19 958 (44,000)																	1		
Upper counterweight (Box)	8 164 (18,000)					1		1	1	2	1	2	1	1	2	2	2			
Carbody center counterweight	13 607 (30,000)																		1	1
Carbody side counterweight	6 803 (15,000)								1	1									1	1
8,0 m (262 ft) No. 58 boom butt, drum 1 w/ wire rope	21 609 (47,640)						1													
5,0 m (16 ft 5 in) No. 58 boom top and straps	9 169 (20,215)					1														
5,0 m (16 ft 5 in) No. 58 boom trans. insert and straps	2 204 (4,860)					1														
6,0 m (19 ft 8 in) No. 58 boom insert and straps	2 562 (5,650)														1					
12,0 m (39 ft 5 in) No. 58 boom with WRG Boom insert and straps	5 595 (12,335)							1												
12,0 m (39 ft 5 in) No. 58 boom insert and straps	4 236 (9,340)								1	1	1	1	1	1						
No. 59 Upper boom point	460 (1,014)														1					
No. 58 Extended upper boom point 7 m (23 ft)	3 674 (8,100)															1				
180 t (200 USt) 5 sheave load block	4 309 (9,500)										1									
100 t (110 USt) 3 sheave load block	3 402 (7,500)														1					
Reel cable - 701 m (2,300 ft)	3 629 (8,000)												1							
Miscellaneous	907 (2,000)																1			
		39 612 (87,330)	28 161 (62,085)	32 665 (72,015)	32 665 (72,015)	19 538 (43,075)	21 609 (47,640)	20 562 (45,335)	19 203 (42,340)	20 564 (45,340)	16 705 (36,840)	20 564 (45,340)	16 029 (35,340)	15 802 (34,840)	19 350 (42,664)	20 002 (44,100)	18 414 (40,600)	19 958 (44,000)	20 410 (45,000)	20 410 (45,000)
		1	2	3	4	5	6	7	8	9	10	11	12	13	14	15	16	17	18	19

* Note: Does not include blocking, strapping etc.

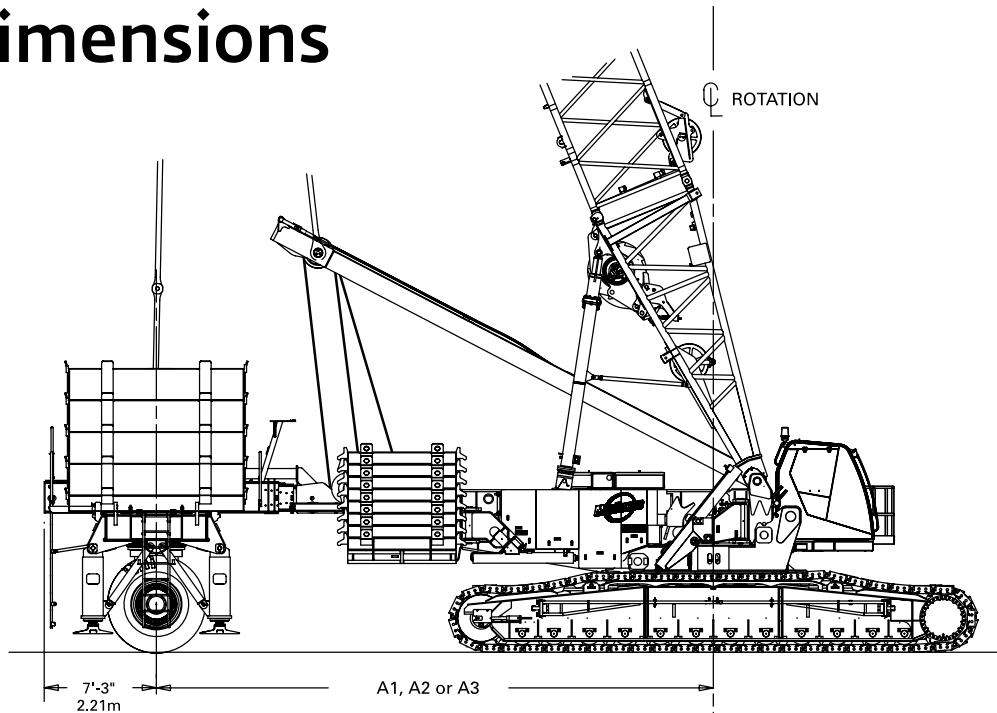


TRANSPORTATION SPECS - Crawler Cranes

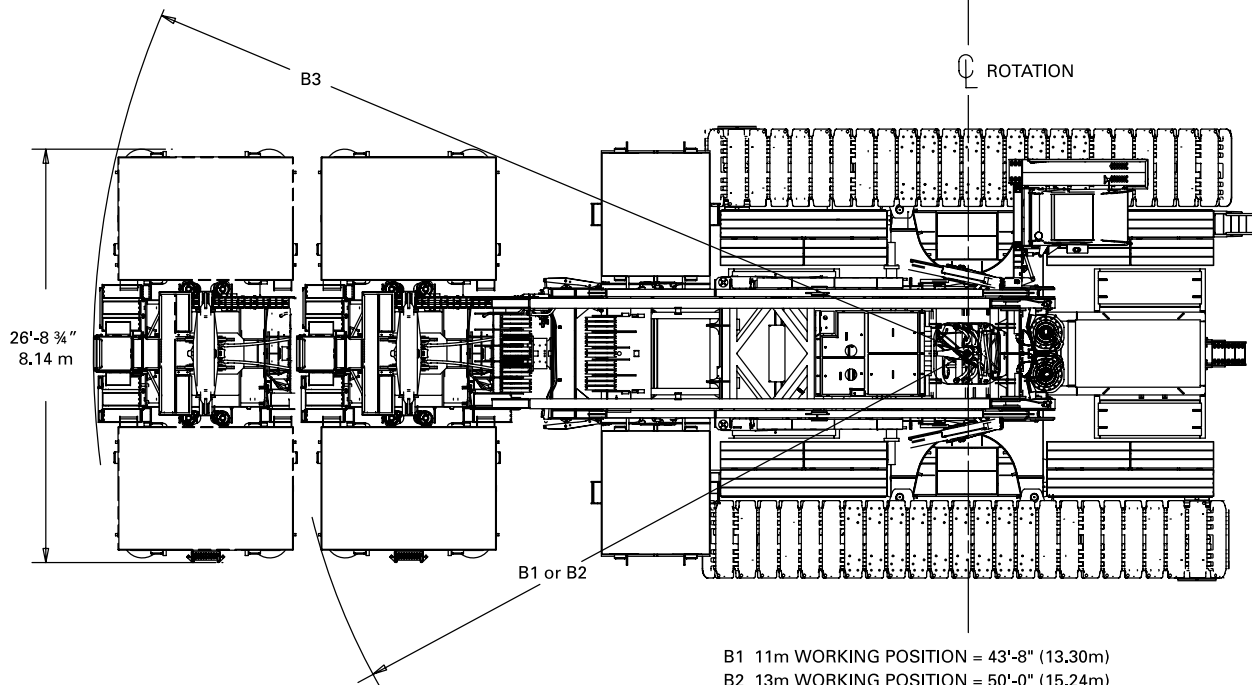
MANITOWOC MODEL 16000 - 440 TON CAPACITY

Outline dimensions

MAX-ER®



- A1 36'-1" (11m WORKING POSITION)
- A2 42'-8" (13m WORKING POSITION)
- A3 49'-3" (15m WORKING POSITION)



- B1 11m WORKING POSITION = 43'-8" (13.30m)
- B2 13m WORKING POSITION = 50'-0" (15.24m)
- B3 15m WORKING POSITION = 56'-6" (17.22m)

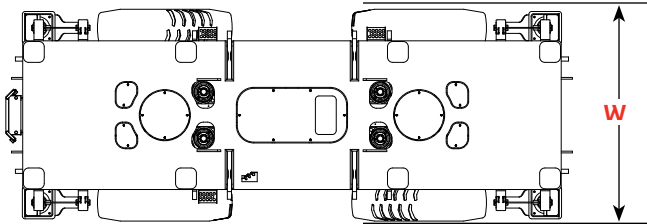


TRANSPORTATION SPECS - Crawler Cranes

MANITOWOC MODEL 16000 - 440 TON CAPACITY

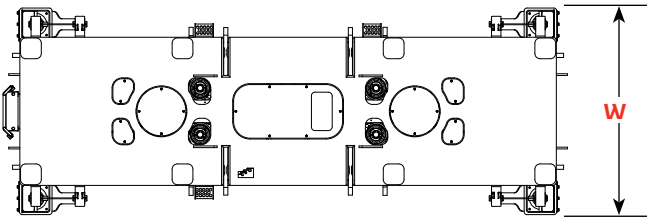
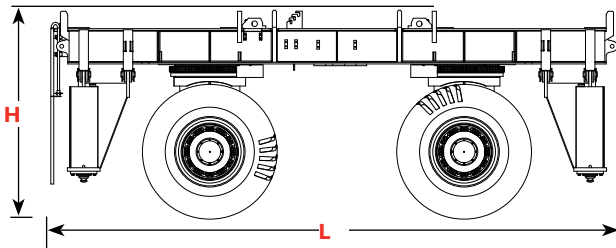
Outline dimensions

MAX-ER®



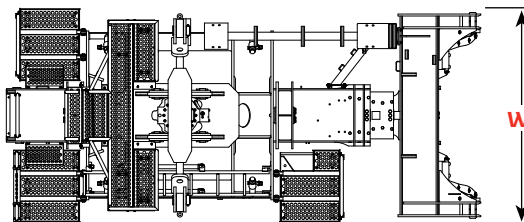
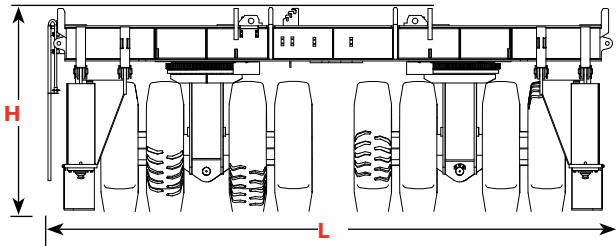
Wheeled carrier (US)

Length	8,15 m	26' 9"
Width	3,05 m	10' 0"
Height	3,00 m	9' 10"
Weight	28 304 kg	62,400 lb



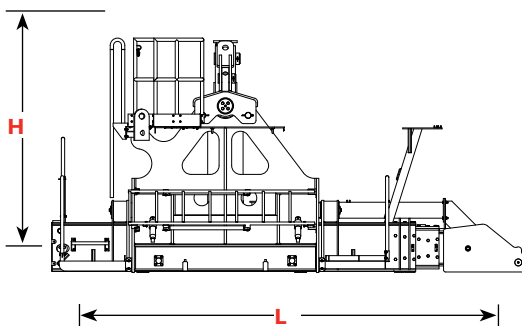
Wheeled carrier (European)

Length	8,15 m	26' 9"
Width	2,98 m	9' 9"
Height	3,00 m	9' 10"
Weight	28 622 kg	63,100 lb



Lifting frame and telescopic beam

Length	6,04 m	19' 10"
Width	2,73 m	8' 11"
Height	2,99 m	9' 9"
Weight	16 828 kg	37,100 lb



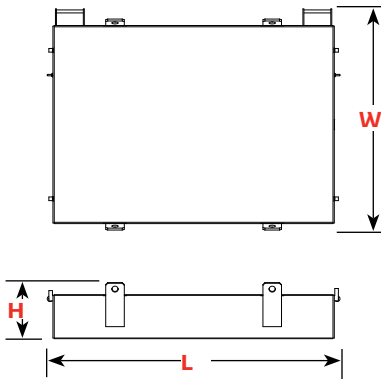


TRANSPORTATION SPECS - Crawler Cranes

MANITOWOC MODEL 16000 - 440 TON CAPACITY

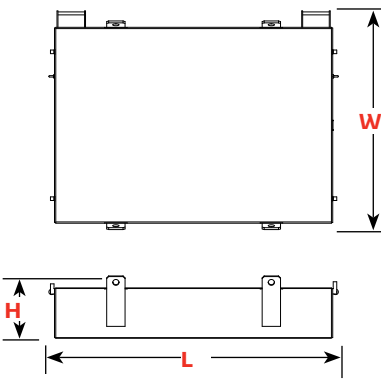
Outline dimensions

MAX-ER®



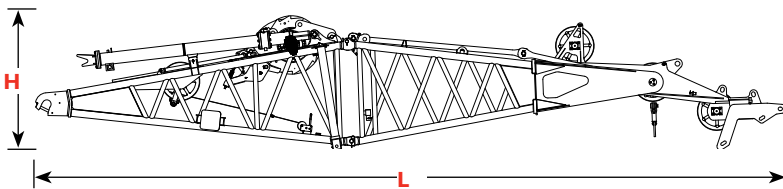
Side counterweight x 2

Length	3,59 m	11' 9"
Width	2,72 m	8' 11"
Height	0,69 m	2' 3"
Weight	13 608 kg	30,000 lb



Side counterweight x 8

Length	3,59 m	11' 9"
Width	2,72 m	8' 11"
Height	0,78 m	2' 6"
Weight	19 958 kg	44,000 lb



No. 59A mast butt and top package, drum, wire rope, equilizer x 1

Length	14,84 m	48' 8"
Width	2,99 m	9' 10"
Height	2,66 m	8' 9"
Weight	20 593 kg	45,400 lb

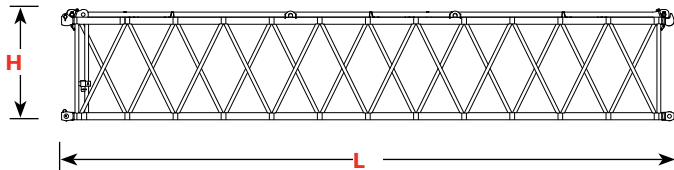


TRANSPORTATION SPECS - Crawler Cranes

MANITOWOC MODEL 16000 - 440 TON CAPACITY

Outline dimensions

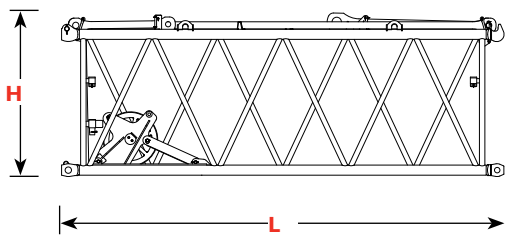
MAX-ER®



No. 59A mast insert 12 m (394')

x 1

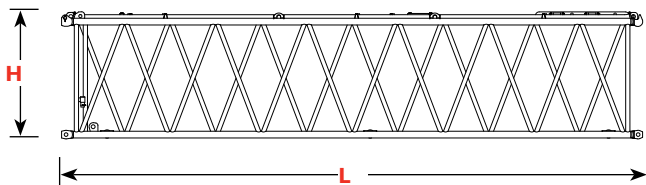
Length	12,19 m	40' 0"
Width	2,72 m	8' 11"
Height	2,23 m	7' 4"
Weight	4 375 kg	9,645 lb



No. 59A mast insert 6 m (198')

x 1

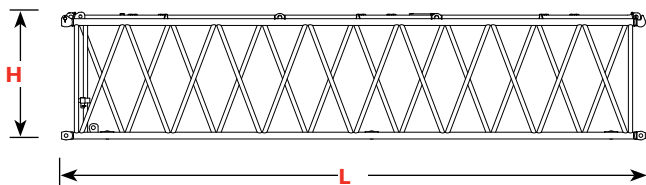
Length	6,19 m	20' 4"
Width	2,72 m	8' 11"
Height	2,29 m	7' 6"
Weight	3 366 kg	7,420 lb



No. 58 heavy boom insert with equillizer rails 12 m (394')

x 1

Length	12,19 m	40' 0"
Width	2,98 m	9' 9"
Height	2,67 m	8' 9"
Weight	4 602 kg	10,145 lb



No. 58 heavy boom insert 12 m (394')

x 1

Length	12,19 m	40' 0"
Width	2,98 m	9' 9"
Height	2,67 m	8' 9"
Weight	5 087 kg	11,215 lb