

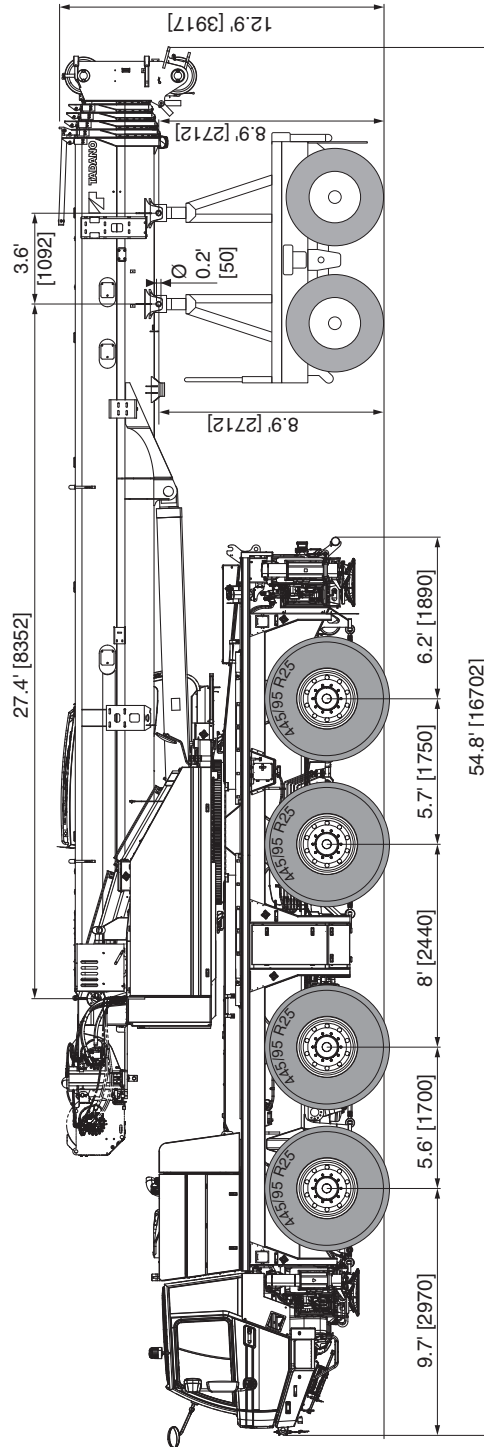




## TRANSPORTATION SPECS - All Terrain Cranes





### TADANO MODEL ATF100G-4 - 110 TON CAPACITY

General








# On-road and off-road driving

Axle loads

Boom to front		TOTAL				
		lb/kg	lb/kg	lb/kg	lb/kg	lb/kg
<b>Total</b>	<b>1. Standard equipment + 2. Optional equipment + 3. Others</b>	<b>95,317/ 43235</b>	<b>28,158/ 12772</b>	<b>27,934/ 12671</b>	<b>19,661/ 8918</b>	<b>19,564/ 8874</b>
1. Standard Equipment	See page 46; no counterweight	85,664/ 38857	25,699/ 11657	25,947/ 11769	17,102/ 7757	16,916/ 7673
2. Optional Equipment (selection)	Tyres 525/80R25 (20.50 R25) instead of 445/95R25 (16.00 R25)	1,099/ 499	267/ 121	266/ 121	283/ 128	284/ 129
	Drive 8x8 instead of drive 8x6	651/ 295	525/ 238	124/ 56	1/ 0	1/ 0
	Towing hook at rear, including couplings for lights and brake	78/ 35	-24/ -11	-25/ -12	63/ 29	64/ 29
	Toolbox at rear (without wood storage)	153/ 69	-53/ -24	-56/ -26	131/ 59	131/ 60
	Auxiliary winch including rope	2,356/ 1068	-739/ -335	-793/ -360	1,937/ 878	1,950/ 885
	Hose drum for hydraulic jib (detachable)	108/ 49	87/ 39	88/ 40	-34/ -16	-32/ -15
	Hydraulic jib fixed on main boom (transport position)	3,188/ 1446	2,096/ 951	2,106/ 955	-532/ -241	-482/ -218
	Additional oil cooler	94/ 43	-2/ -1	-4/ -2	50/ 22	50/ 23
	Single top	127/ 58	150/ 68	152/ 69	-89/ -40	-86/ -39
	Hook block 6.6 US t / 6 t (in storage on carrier)	381/ 173	98/ 45	94/ 43	93/ 42	96/ 44
3. Others	Driver	225/ 102	181/ 82	183/ 83	-72/ -33	-68/ -31
	Fuel in carrier	758/ 344	-109/ -49	-123/ -56	492/ 223	498/ 226
	Fuel in superstructure	436/ 198	-17/ -8	-24/ -11	237/ 107	241/ 109
Additional weight information	Hook block 22.0 US t / 20 t (hanging at main boom)	682/ 309	802/ 364	813/ 369	-474/ -215	-459/ -208
	Hook block 44.1 US t / 40 t (hanging at main boom)	1,213/ 550	1,425/ 647	1,446/ 656	-842/ -382	-817/ -370
	Hook block 69.4 US t / 63 t (hanging at main boom)	1,476/ 669	1,735/ 787	1,760/ 798	-1,025/ -465	-994/ -451
	Counterweight No. 1; 1,984 lbs / 0.9 t (on carrier)	1,985/ 900	884/ 401	879/ 399	97/ 44	124/ 56
	Counterweight No. 2 or No. 3; 6,393 lbs / 2.9 t (on carrier)	6,392/ 2899	2,846/ 1291	2,830/ 1284	313/ 142	401/ 182
	Counterweight No. 4; 3,527 lbs / 1.6 t (on carrier)	3,444/ 1562	1,534/ 696	1,526/ 692	169/ 77	216/ 98
	Counterweight No. 5; 13,669 lbs / 6,2 t (on carrier)	13,662/ 6197	6,066/ 2752	6,031/ 2736	689/ 313	875/ 397
	Counterweight No. 7; 2,425 lbs / 1.1 t (on superstructure)	2,465/ 1118	-649/ -294	-702/ -318	1,900/ 862	1,916/ 869
	2 x Counterweight No. 8; 2 x 1,543 lbs / 2 x 0.7 t (on superstructure)	3,091/ 1402	-787/ -357	-852/ -387	2,355/ 1068	2,345/ 1077

# On-road and off-road driving

Axle loads

Boom over rear, supported by dolly (29.2 ft / 8.9 m behind boom pivot point)		TOTAL					
		lb/kg	lb/kg	lb/kg	lb/kg	lb/kg	lb/kg
<b>Total</b>	<b>1. Standard equipment + 2. Optional equipment + 3. Others</b>	<b>95,317/ 43235</b>	<b>22,356/ 10141</b>	<b>22,235/ 10086</b>	<b>16,609/ 7534</b>	<b>16,291/ 7390</b>	<b>17,826/ 8086</b>
1. Standard Equipment	See page 46; no counterweight	85,604/ 38829	19,919/ 9035	20,230/ 9176	15,372/ 6973	14,989/ 6799	15,153/ 6873
2. Optional Equipment (selection)	Tyres 525/80R25 (20.50 R25) instead of 445/95R25 (16.00 R25)	1,099/ 499	267/ 121	266/ 121	283/ 128	284/ 129	0/ 0
	Drive 8x8 instead of drive 8x6	651/ 295	525/ 238	124/ 56	1/ 0	1/ 0	0/ 0
	Towing hook at rear, including couplings for lights and brake	78/ 35	-24/ -11	-25/ -12	63/ 29	64/ 29	0/ 0
	Toolbox at rear (without wood storage)	153/ 69	-53/ -24	-56/ -26	131/ 59	131/ 60	0/ 0
	Auxiliary winch including rope	2,356/ 1068	1,186/ 538	1,184/ 537	-24/ -11	9/ 4	0/ 0
	Hose drum for hydraulic jib (detachable)	108/ 49	4/ 2	4/ 2	2/ 1	2/ 1	97/ 44
	Hydraulic jib fixed on main boom (transport position)	3,188/ 1446	256/ 116	251/ 114	127/ 58	137/ 62	2,416/ 1096
	Additional oil cooler	94/ 43	20/ 9	19/ 9	27/ 12	28/ 13	0/ 0
	Single top	127/ 58	-11/ -5	-11/ -5	-5 -2	-6 -3	159/ 72
	Hook block 6.6 US t / 6 t (in storage on carrier)	381/ 173	97/ 44	94/ 43	92/ 42	96/ 44	0/ 0
3. Others	Driver	225/ 102	181/ 82	183/ 83	-72/ -33	-68/ -31	0/ 0
	Fuel in carrier	758/ 344	-109/ -49	-123/ -56	492/ 223	498/ 226	0/ 0
	Fuel in superstructure	436/ 198	99/ 45	95/ 43	119/ 54	124/ 56	0/ 0
Additional weight information	Hook block 22.0 US t / 20 t (hanging at main boom)	682/ 309	-56/ -25	-55/ -25	-28/ -13	-30/ -14	851/ 386
	Hook block 44.1 US t / 40 t (hanging at main boom)	1,213/ 550	-100/ -45	-98/ -44	-50/ -23	-53/ -24	1,513/ 686
	Hook block 69.4 US t / 63 t (hanging at main boom)	1,476/ 669	-121/ -55	-119/ -54	-60/ -27	-65/ -29	1,842/ 835
	Counterweight No. 1; 1,984 lbs / 0.9 t (on carrier)	1,985/ 900	884/ 401	879/ 399	97/ 44	124/ 56	0/ 0
	Counterweight No. 2 or No. 3; 6,393 lbs / 2.9 t (on carrier)	6,391/ 2899	2,846/ 1291	2,830/ 1284	313/ 142	401/ 182	0/ 0
	Counterweight No. 4; 3,527 lbs / 1.6 t (on carrier)	3,444/ 1562	1,534/ 696	1,526/ 692	169/ 77	216/ 98	0/ 0
	Counterweight No. 5; 13,669 lbs / 6.2 t (on carrier)	13,662/ 6197	6,066/ 2752	6,031/ 2736	689/ 313	875/ 397	0/ 0
	Counterweight No. 7; 2,425 lbs / 1.1 t (on superstructure)	2,465/ 1118	1,109/ 503	1,105/ 501	110/ 50	143/ 65	0/ 0
2 x Counterweight No. 8; 2 x 1,543 lbs / 2 x 0.7 t (on superstructure)	3,091/ 1402	1,365/ 619	1,356/ 615	163/ 74	207/ 94	0/ 0	

# STERLING CRANE



## TRANSPORTATION SPECS - All Terrain Cranes

### TADANO MODEL ATF100G-4 - 110 TON CAPACITY

#### On-road and off-road driving

#### Speeds and gradeability

445/95 R 25 525/80 R 25	52.8 mph max. 85 km/h max.	31.0 mph max. 50 km/h max.	30 %	65 %

#### Steering

		v < 15.5 mph v < 25 km/h
		15.5 mph ≤ v ≤ 24.9 mph 25 km/h ≤ v ≤ 40 km/h
		v > 24.9 mph v > 40 km/h
		Manual steering · Direction manuelle · Dirección manual
		Smallest turning circle · Rayon de braquage mini · Mínimo radio
		Diagonal steering · Marche en crabe · Marcha cangrejo
		Rear veering suppression · Suppression de déboîtement AR Supresión de movimiento transversal de parte posterior

# STERLING CRANE

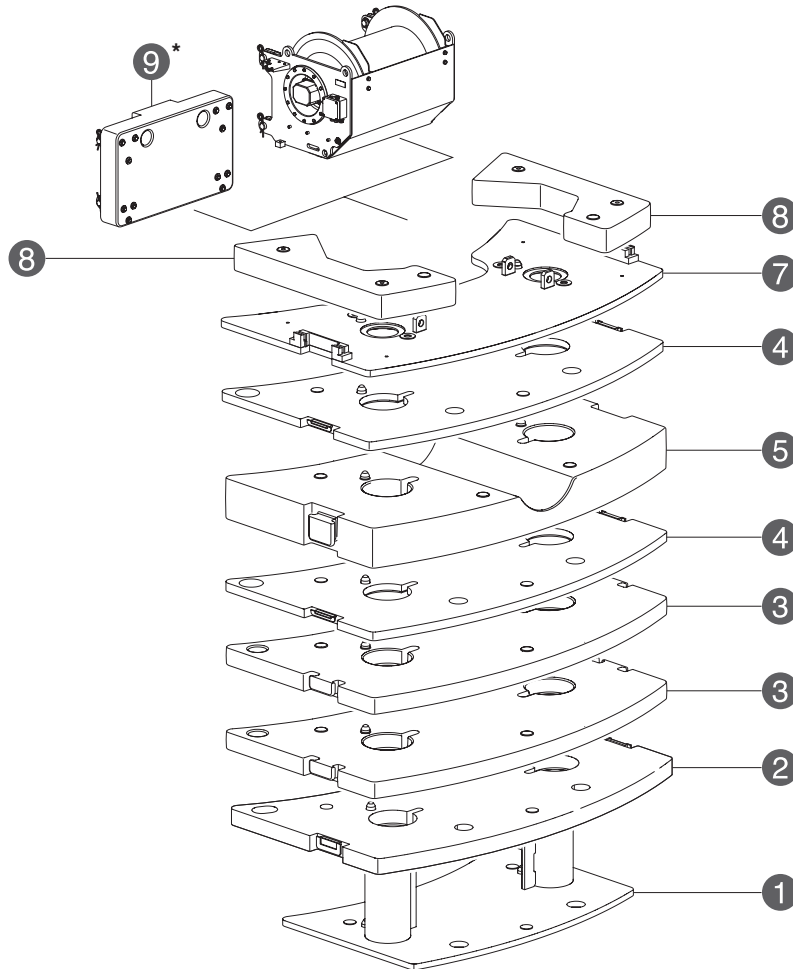


## TRANSPORTATION SPECS - All Terrain Cranes

### TADANO MODEL ATF100G-4 - 110 TON CAPACITY

Transport

Counterweight



		2,205 lbs	7,716 lbs	11,244 lbs	13,228 lbs	16,755 lbs	19,621 lbs	22,487 lbs	26,015 lbs	29,542 lbs	35,935 lbs	43,211 lbs	49,604 lbs
		1.0 t	3.5 t	5.1 t	6.0 t	7.6 t	8.9 t	10.2 t	11.8 t	13.4 t	16.3 t	19.6 t	22.5 t
①	1,984 lbs 0.9 t	-	-	-	1	1	1	1	1	1	1	1	1
②	6,393 lbs 2.9 t	-	-	-	-	-	-	-	-	-	1	-	1
③	6,393 lbs 2.9 t	-	-	-	-	-	1	2	2	2	2	2	2
④	3,527 lbs 1.6 t	-	-	1	1	2	1	-	1	2	2	2	2
⑤	13,669 lbs 6.2 t	-	-	-	-	-	-	-	-	-	-	1	1
⑦	2,425 lbs 1.1 t	-	1	1	1	1	1	1	1	1	1	1	1
⑧	1,543 lbs 0.7 t	-	2	2	2	2	2	2	2	2	2	2	2
⑨*	2,205 lbs 1.0 t	1	1	1	1	1	1	1	1	1	1	1	1

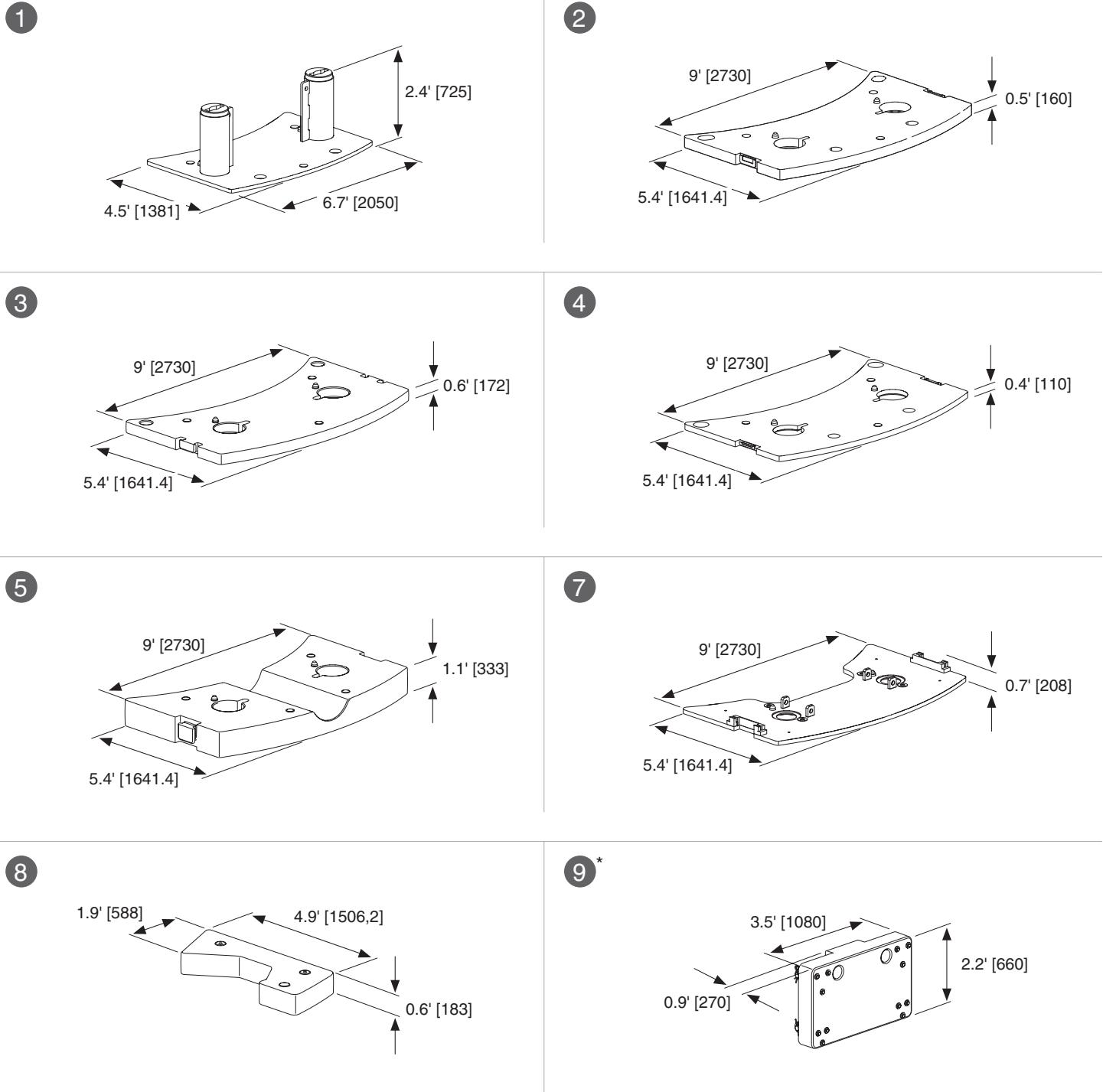
\* Can be replaced by 2nd winch · Peut être remplacé par un 2e treuil · Sustituible por 2° cabrestante



## TRANSPORTATION SPECS - All Terrain Cranes

### TADANO MODEL ATF100G-4 - 110 TON CAPACITY

#### Transport



\* Can be replaced by 2nd winch · Peut être remplacé par un 2e treuil · Sustituible por 2° cabrestante

# STERLING CRANE

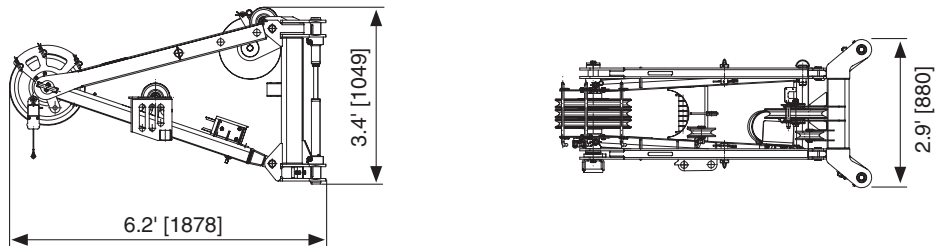


## TRANSPORTATION SPECS - All Terrain Cranes

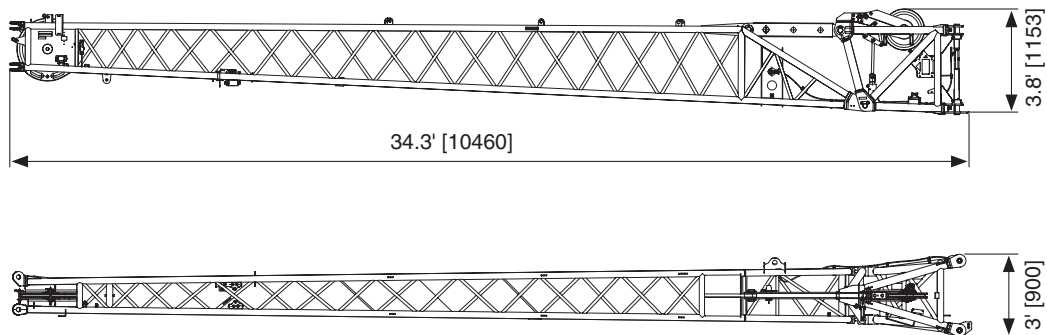
### TADANO MODEL ATF100G-4 - 110 TON CAPACITY

Transport		Jibs	
	ft	m	
 1.3 + 4.3 ft  0.4 + 1.3 m	1.3 + 4.3 ft	0.4 + 1.3 m	①
 32.8/59.1 ft HYDRO  32.8/59.1 ft	3.3 ft + 29.5 ft	1 m + 9 m	②
 10/18 m HYDRO  10/18 m	3.3 ft + 55.8 ft	1 m + 17 m	② + ③

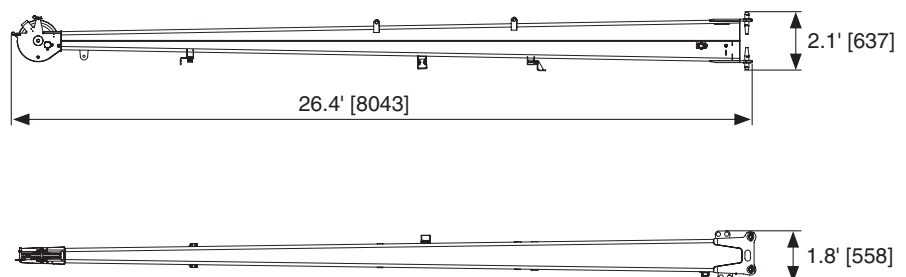
① 736 334



② 2,401 1089



③ 831 377







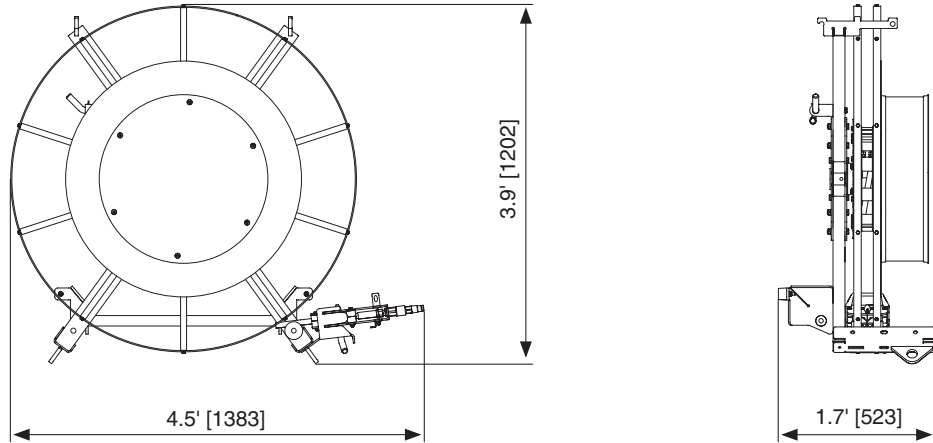
## TRANSPORTATION SPECS - All Terrain Cranes

### TADANO MODEL ATF100G-4 - 110 TON CAPACITY

#### Transport Hose drum for hydraulic jib

**lbs**  
386

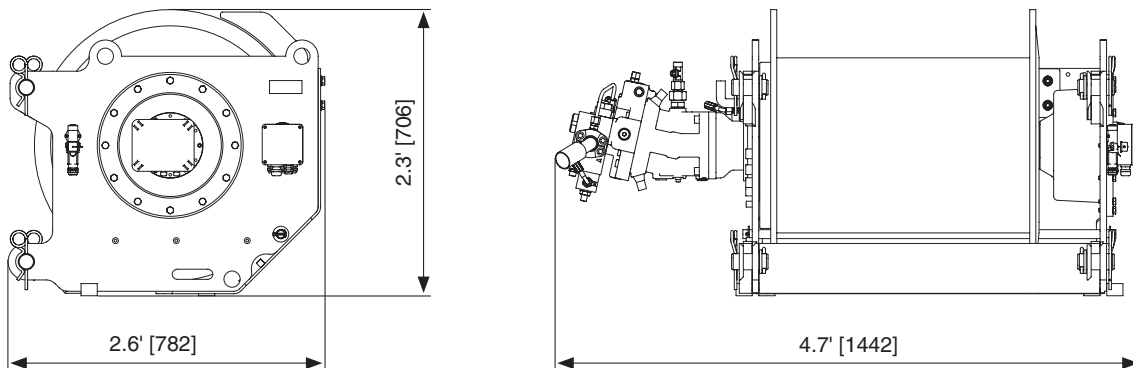
**kg**  
175



#### Auxiliary winch

**lbs**  
1,470/  
2,282\*

**kg**  
667/  
1035\*



\* with rope - avec câble - con cable