

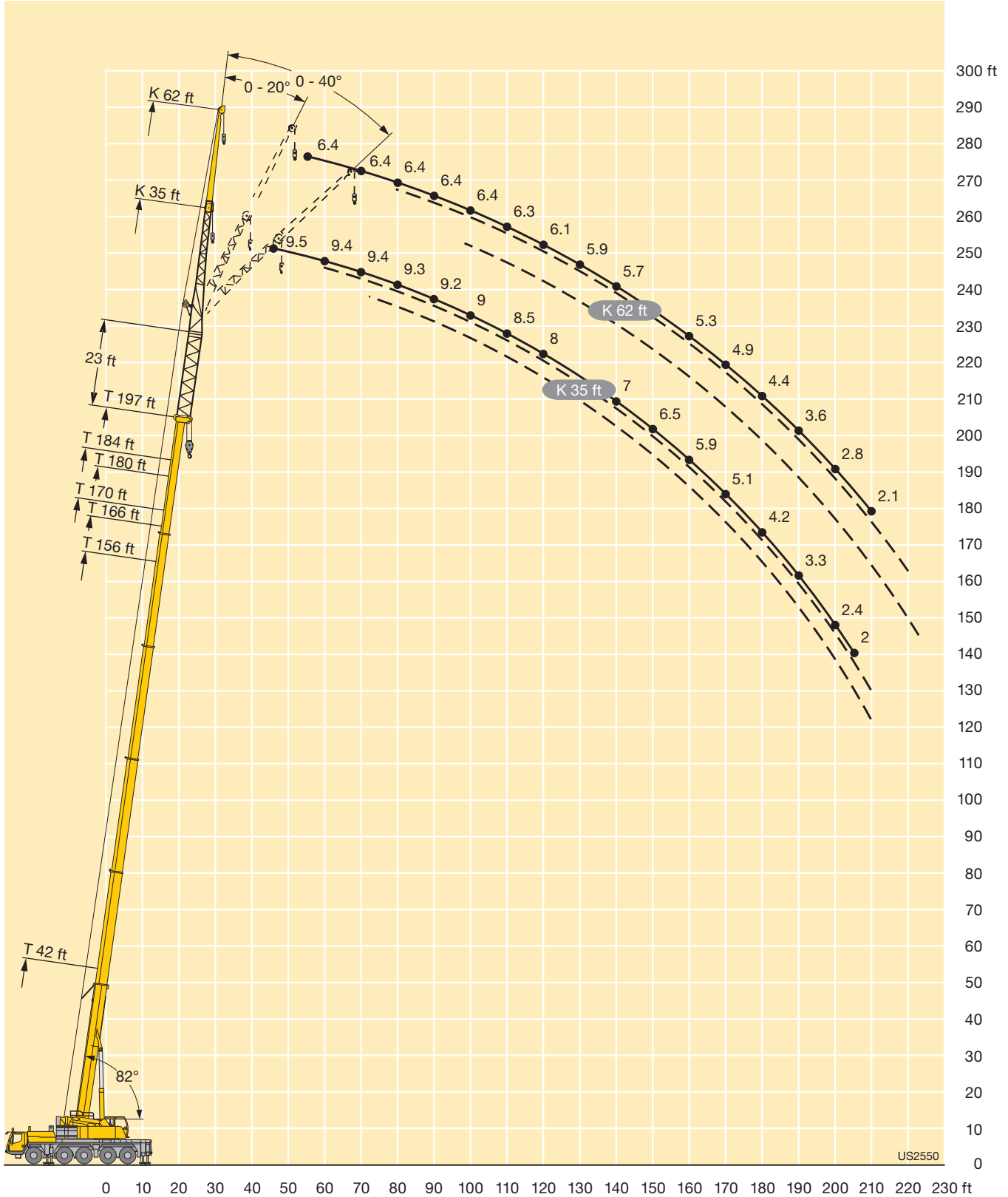


LIFTING CHARTS - All Terrain Cranes

LIEBHERR MODEL LTM 1130-5.1 - 155 TON CAPACITY

Lifting heights Hauteurs de levage

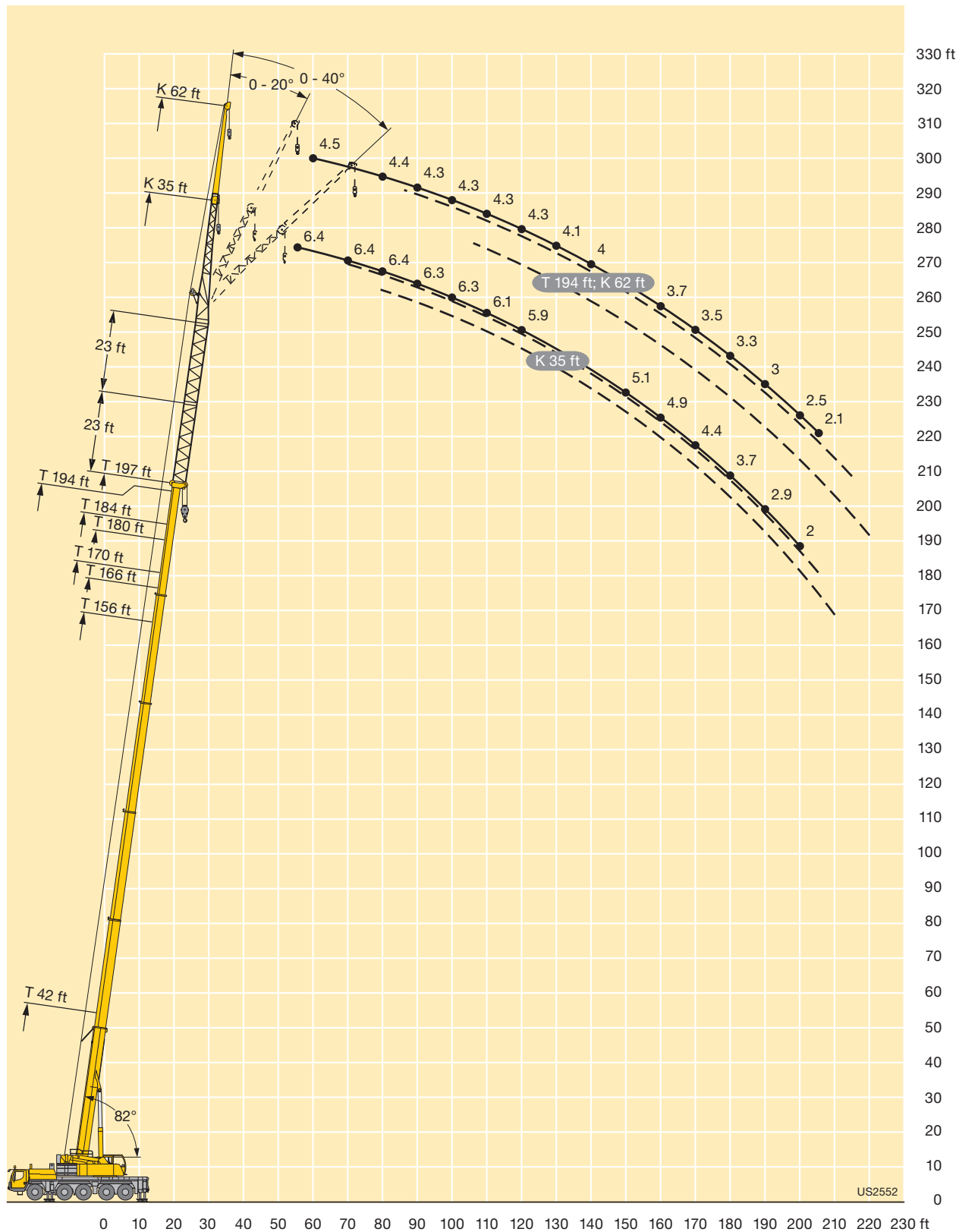
TVNZK



STERLING CRANE

Lifting heights Hauteurs de levage

TVNZK



STERLING CRANE

Lifting capacities Forces de levage

TVNZK

ft	42 - 197 ft		23 ft		35 ft		360°		92600 lbs		85%		ft									
	T		V		NZK		360°		92600 lbs		85%											
	42 ft + 23 ft		156 ft + 23 ft		166 ft + 23 ft		170 ft + 23 ft		180 ft + 23 ft		184 ft + 23 ft			197 ft + 23 ft								
	35 ft			35 ft			35 ft			35 ft			35 ft									
	0°	20°	40°	0°	20°	40°	0°	20°	40°	0°	20°	40°	0°	20°	40°	0°	20°	40°				
14	14.6																		14			
15	14.6																		15			
16	14.6																		16			
17	14.5																		17			
18	14.5																		18			
19	14.5																		19			
20	14.5	14.5																	20			
22	14.4	14.4																	22			
24	14.2	14.3																	24			
26	13.8	14																	26			
28	13.4	13.5																	28			
30	13	13.1	12.6																30			
32	12.6	12.6	12.6																32			
34	12.2	12.2	12.4																34			
36	11.8	11.8	12	14.6															36			
38	11.4	11.4	11.6	14.6			12.6			12.9									38			
40	11	11	11.2	14.6			12.6			12.9		11							40			
45	10.1	10.2	10.4	14.5			12.6			12.9		11		11.2			9.5		45			
50	9.3	9.6	9.7	14.5	14.1		12.6			12.9		11		11.2			9.5		50			
55	8.4	9	9.1	14.3	13.6		12.5	12.3		12.8	12.8	11	11	11.2			9.4		55			
60	7.6	8.4	8.6	14.1	13.1	12.3	12.4	12		12.7	12.5	11	11	11.2	11.2		9.4	9.5	60			
65	6.9	7.5	8	13.6	12.6	11.9	12.2	11.5	11	12.7	12.1	11.5	11	10.9	10.6	11.2	11.2	9.4	9.5	65		
70	6.3	6.8	7.2	13.1	12.1	11.4	11.9	11.1	10.6	12.4	11.7	11.2	10.9	10.7	10.3	11.1	11	10.7	9.4	9.5	70	
75	5.7	6.1	6.4	12.7	11.6	11.1	11.5	10.8	10.3	12.1	11.3	10.8	10.8	10.4	10	11	10.7	10.3	9.4	9.5	75	
80	5.2	5.5	5.7	12.2	11.2	10.7	11.2	10.4	10	11.8	11	10.4	10.6	10.1	9.8	10.8	10.5	10.1	9.3	9.4	9.2	80
85	4.7	5	5	11.8	10.8	10.3	10.8	10.1	9.7	11.4	10.6	10.2	10.3	9.8	9.5	10.7	10.2	9.9	9.3	9.2	9.1	85
90	4.3	4.4		11.3	10.4	10	10.4	9.8	9.5	11.1	10.3	9.9	10	9.6	9.3	10.5	9.9	9.6	9.2	9.1	8.9	90
95				10.8	10.1	9.7	10	9.5	9.2	10.7	10	9.6	9.7	9.4	9.1	10.2	9.7	9.4	9.1	8.9	8.7	95
100				10.4	9.8	9.5	9.6	9.3	9	10.3	9.7	9.4	9.4	9.1	8.9	9.9	9.5	9.2	9	8.7	8.6	100
105				10	9.5	9.3	9.3	9	8.8	10	9.5	9.2	9.1	8.9	8.7	9.7	9.2	9	8.7	8.5	8.4	105
110				9.6	9.3	9	9	8.8	8.6	9.6	9.2	9	8.9	8.7	8.5	9.4	9	8.8	8.5	8.4	8.2	110
115				9.2	9	8.8	8.6	8.5	8.4	9.3	9	8.8	8.6	8.4	8.3	9.1	8.8	8.7	8.3	8.2	8.1	115
120				8.8	8.8	8.7	8.3	8.3	8.2	8.9	8.7	8.6	8.3	8.2	8.2	8.8	8.6	8.5	8	8	7.9	120
125				8.4	8.5	8.4	8	8	8	8.6	8.5	8.4	8	7.9	8	8.5	8.4	8.3	7.8	7.8	7.8	125
130				8	8.2	8.1	7.6	7.7	7.8	8.3	8.3	8.3	7.7	7.7	7.8	8.2	8.2	8.1	7.5	7.5	7.6	130
135				7.7	7.8	7.9	7.3	7.4	7.5	7.9	8	8	7.4	7.4	7.5	7.9	7.9	7.9	7.3	7.3	7.4	135
140				7.4	7.5	7.6	7	7.1	7.2	7.6	7.7	7.8	7.2	7.2	7.3	7.6	7.7	7.7	7	7.1	7.2	140
145				7	7.1	7.2	6.7	6.8	6.9	7.3	7.4	7.5	6.9	7	7.1	7.3	7.4	7.5	6.8	6.8	7	145
150				6.7	6.8	6.9	6.3	6.5	6.6	7	7.1	7.2	6.6	6.7	6.8	7.1	7.1	7.2	6.5	6.6	6.8	150
155				6.4	6.5	6.6	6	6.2	6.3	6.7	6.8	6.9	6.3	6.4	6.6	6.8	6.9	7	6.2	6.4	6.5	155
160				6.1	6.2	6.3	5.8	5.9	6	6.5	6.6	6.6	6.1	6.2	6.3	6.4	6.6	6.7	5.9	6.1	6.2	160
165				5.9	6	6	5.5	5.6	5.7	6.2	6.3	6.4	5.8	5.9	6	6	6.3	6.5	5.6	5.8	5.9	165
170				5.6	5.7	5.8	5.2	5.3	5.4	6	6.1	6.1	5.6	5.7	5.8	5.6	5.9	6.1	5.1	5.5	5.6	170
175				5.4	5.5	5.5	4.9	5.1	5.1	5.8	5.8	5.9	5.3	5.4	5.5	5.1	5.5	5.7	4.7	5.1	5.4	175
180				5.1	5.2		4.7	4.8	4.9	5.5	5.6	5.7	5.1	5.2	5.3	4.5	5	5.2	4.2	4.6	4.9	180
185				4.9	5		4.5	4.6	4.6	5	5.3	5.4	4.9	5	5	4	4.5	4.7	3.8	4.2	4.4	185
190				4.7	4.8		4.3	4.3		4.6	4.8		4.5	4.7	4.8	3.5	3.9	4.1	3.3	3.7	3.9	190
195				4.5	4.6		4	4.1		4.1	4.4		4	4.3	4.4	3.1	3.4	3.6	2.9	3.2	3.5	195
200				4.3	4.4		3.8	3.9		3.6	3.9		3.5	3.8		2.6	2.9	3.1	2.4	2.8	3	200
205				3.3			3.6	3.7		3.2	3.4		3.1	3.4		2.2	2.5		2	2.3	2.5	205
210							3.4	3.5		2.8	2.9		2.7	2.9		1.8	2			1.9	2	210
215							2.5			2.5	2.5		2.3	2.5								215
220													2	2.1								220

t_205_52001_00_000

STERLING CRANE

Lifting capacities Forces de levage

TVNZK

ft	42 - 197 ft T			23 ft V			62 ft NZK			360°			92600 lbs			85%			ft						
	42 ft + 23 ft			156 ft + 23 ft			166 ft + 23 ft			170 ft + 23 ft			180 ft + 23 ft			184 ft + 23 ft				194 ft + 23 ft			197 ft + 23 ft		
	62 ft			62 ft			62 ft			62 ft			62 ft			62 ft				62 ft			62 ft		
	0°	20°	40°	0°	20°	40°	0°	20°	40°	0°	20°	40°	0°	20°	40°	0°	20°	40°	0°	20°	40°	0°	20°	40°	
17	9.2																								17
18	9.2																								18
19	9.2																								19
20	9.2																								20
22	9.1																								22
24	9.1																								24
26	9																								26
28	9																								28
30	8.9																								30
32	8.8																								32
34	8.8																								34
36	8.7	8.5																							36
38	8.6	8.5																							38
40	8.5	8.4		9.2																					40
45	8.2	8.3		9.1			8.1			8.3															45
50	7.8	7.9		9.1			8.1			8.3			7.4			7.5									50
55	7.4	7.5	7.6	9			8.1			8.3			7.4			7.5			6.6			6.4			55
60	7	7.1	7.3	9			8.1			8.3			7.4			7.5			6.6			6.4			60
65	6.6	6.7	6.9	8.9	8.4		8.1			8.3			7.4			7.5			6.6			6.4			65
70	6.3	6.3	6.5	8.8	8.4		8.1	7.9		8.2	8		7.4			7.4			6.6			6.4			70
75	6	6	6.2	8.7	8.3		8	7.8		8.2	8		7.3	7.2		7.4	7.4		6.6			6.4			75
80	5.6	5.7	5.9	8.6	8.1		7.9	7.7		8.1	7.9		7.3	7.2		7.4	7.4		6.6	6.4		6.4	6.3		80
85	5.2	5.5	5.6	8.5	7.9	7.5	7.8	7.4		8.1	7.7		7.3	7.1		7.3	7.3		6.6	6.4		6.4	6.3		85
90	4.8	5.2	5.4	8.3	7.7	7.3	7.7	7.3	6.9	8	7.5	7.2	7.2	7.1	6.7	7.3	7.3		6.6	6.4		6.4	6.3		90
95	4.4	4.9	5.2	8	7.5	7.1	7.6	7.1	6.7	7.8	7.3	7	7.2	6.9	6.6	7.3	7.1	6.8	6.5	6.4	6	6.4	6.3		95
100	4	4.6	4.9	7.8	7.2	6.9	7.4	6.9	6.6	7.7	7.1	6.8	7.1	6.7	6.5	7.2	6.9	6.7	6.5	6.4	6.1	6.4	6.3	6	100
105	3.7	4.1	4.4	7.6	7	6.7	7.2	6.7	6.4	7.5	7	6.7	7	6.5	6.3	7.1	6.8	6.5	6.5	6.3	6.1	6.3	6.2	6	105
110	3.4	3.7	3.8	7.4	6.8	6.6	7	6.5	6.3	7.3	6.8	6.5	6.8	6.4	6.2	7	6.6	6.4	6.4	6.2	6	6.3	6.1	6	110
115	3.1	3.3		7.2	6.6	6.4	6.8	6.3	6.1	7.1	6.6	6.4	6.7	6.2	6.1	6.9	6.5	6.2	6.3	6.1	5.9	6.2	6	5.9	115
120				7	6.5	6.2	6.6	6.2	6	6.9	6.4	6.2	6.5	6.1	5.9	6.7	6.3	6.1	6.2	5.9	5.8	6.1	5.9	5.8	120
125				6.8	6.3	6.1	6.4	6	5.9	6.7	6.3	6.1	6.4	6	5.8	6.6	6.2	6	6.1	5.8	5.7	6	5.8	5.7	125
130				6.6	6.1	6	6.3	5.9	5.7	6.6	6.1	6	6.2	5.8	5.7	6.4	6	5.9	6	5.7	5.6	5.9	5.7	5.6	130
135				6.4	6	5.9	6.1	5.7	5.6	6.4	6	5.9	6	5.7	5.6	6.3	5.9	5.8	5.9	5.6	5.5	5.8	5.6	5.5	135
140				6.2	5.9	5.7	5.9	5.6	5.5	6.2	5.9	5.7	5.9	5.6	5.5	6.2	5.8	5.7	5.8	5.5	5.4	5.7	5.5	5.4	140
145				6.1	5.7	5.6	5.8	5.5	5.4	6.1	5.7	5.6	5.8	5.5	5.4	6	5.7	5.6	5.7	5.4	5.3	5.6	5.4	5.3	145
150				5.9	5.6	5.5	5.6	5.4	5.3	5.9	5.6	5.5	5.6	5.3	5.3	5.9	5.6	5.5	5.6	5.3	5.2	5.5	5.3	5.2	150
155				5.7	5.5	5.4	5.4	5.3	5.2	5.8	5.5	5.4	5.4	5.2	5.2	5.7	5.5	5.4	5.4	5.2	5.1	5.4	5.2	5.1	155
160				5.5	5.4	5.3	5.3	5.1	5.1	5.7	5.4	5.3	5.3	5.1	5.1	5.6	5.4	5.3	5.3	5.1	5	5.3	5.1	5	160
165				5.3	5.2	5.2	5	5	5.1	5.5	5.3	5.2	5.1	5	5	5.4	5.3	5.2	5.2	5	5	5.1	5	4.9	165
170				5.1	5.1	5.2	4.8	4.9	5	5.3	5.2	5.2	5	4.9	5	5.3	5.2	5.1	5	4.9	4.9	4.9	4.9	4.9	170
175				4.9	4.9	5.1	4.6	4.8	4.8	5.1	5.1	5.1	4.8	4.8	4.9	5.1	5.1	5.1	4.8	4.8	4.8	4.7	4.8	4.8	175
180				4.7	4.8	4.9	4.4	4.6	4.7	4.9	5	5	4.6	4.7	4.8	4.7	4.9	5	4.6	4.7	4.8	4.4	4.7	4.8	180
185				4.5	4.6	4.8	4.2	4.4	4.5	4.7	4.8	4.9	4.4	4.6	4.7	4.4	4.8	4.9	4.2	4.6	4.7	4	4.6	4.6	185
190				4.3	4.4	4.5	4	4.2	4.3	4.5	4.6	4.8	4.2	4.4	4.6	4	4.6	4.8	3.8	4.4	4.6	3.6	4.3	4.5	190
195				4.1	4.2	4.3	3.8	4	4.1	4.4	4.5	4.6	4	4.2	4.4	3.6	4.2	4.6	3.3	4.1	4.4	3.2	3.9	4.3	195
200				3.9	4	4.1	3.6	3.8	3.9	4.2	4.3	4.4	3.8	4.1	4.2	3.1	3.8	4.2	3	3.7	4.1	2.8	3.5	4	200
205				3.7	3.8		3.4	3.6	3.6	3.8	4.1	4.2	3.5	3.9	4	2.8	3.4	3.7	2.6	3.3	3.7	2.4	3.1	3.5	205
210				3.6	3.7		3.2	3.4	3.4	3.3	3.9	4	3.2	3.6	3.8	2.4	3	3.3	2.2	2.9	3.2	2.1	2.7	3.1	210
215				3.4	3.5		3	3.2		3	3.4	3.6	2.8	3.3	3.5	2	2.6	2.8	1.9	2.5	2.8		2.3	2.7	215
220				3.2	3.3		2.8	3		2.6	3		2.5	2.9	3.1		2.1	2.4		2.1	2.4		1.9	2.3	220
225				3	3.2		2.7	2.8		2.2	2.6		2.1	2.5				1.9			2			1.8	225
230				2.6			2.5	2.6		1.9	2.2		1.8	2.2											230
235							2.2	2.4																	235
240							1.9																		240

t_205_52101_00_000

STERLING CRANE

Lifting capacities Forces de levage

TVNZK

ft	42 ft + 23 ft			156 ft + 23 ft			166 ft + 23 ft			170 ft + 23 ft			180 ft + 23 ft			184 ft + 23 ft			197 ft + 23 ft			ft	
	35 ft			35 ft			35 ft			35 ft			35 ft			35 ft							
	0°	20°	40°	0°	20°	40°	0°	20°	40°	0°	20°	40°	0°	20°	40°	0°	20°	40°	0°	20°	40°		
14	13.3																					14	
15	13.3																						15
16	13.2																						16
17	13.2																						17
18	13.2																						18
19	13.2																						19
20	13.1	13.2																					20
22	13.1	13.1																					22
24	12.9	13																					24
26	12.6	12.7																					26
28	12.2	12.3																					28
30	11.8	11.9	11.4																				30
32	11.5	11.5	11.4																				32
34	11.1	11.1	11.2																				34
36	10.7	10.7	10.9	13.3																			36
38	10.4	10.4	10.5	13.3			11.5			11.8													38
40	10	10	10.2	13.3			11.5			11.8			10										40
45	9.2	9.3	9.4	13.2			11.4			11.8			10			10.2			8.6				45
50	8.4	8.7	8.8	13.1	12.9		11.4			11.7			10			10.2			8.6				50
55	7.6	8.2	8.3	13	12.4		11.4	11.2		11.6	11.7		10	10		10.2			8.6				55
60	6.9	7.6	7.8	12.8	11.9	11.2	11.3	10.9		11.6	11.4		10	10		10.2	10.2		8.6	8.6			60
65	6.3	6.9	7.3	12.1	11.4	10.8	11.1	10.5	10	11.1	11	10.5	9.9	9.9	9.6	9.5	10.2		8.4	8.6			65
70	5.7	6.2	6.6	10.7	11	10.4	10.2	10.1	9.7	9.5	10.6	10.1	9	9.7	9.3	8	9.5	9.7	7.3	8.5	8.4		70
75	5.2	5.6	5.9	9.2	10.4	10	8.9	9.8	9.4	8.1	9.5	9.8	7.7	9	9.1	6.6	8.1	9.3	6	7.5	8.3		75
80	4.7	5	5.2	7.9	9.2	9.7	7.6	8.9	9.1	6.8	8.1	9.2	6.5	7.8	8.8	5.4	6.9	8	4.9	6.3	7.5		80
85	4.3	4.5	4.6	6.7	7.9	8.9	6.4	7.7	8.6	5.6	6.9	8	5.4	6.7	7.7	4.3	5.7	6.8	3.9	5.2	6.3		85
90	3.9	4		5.7	6.8	7.7	5.4	6.5	7.5	4.6	5.8	6.8	4.4	5.6	6.6	3.3	4.6	5.7	2.9	4.3	5.2		90
95				4.8	5.8	6.7	4.5	5.5	6.4	3.7	4.8	5.7	3.5	4.6	5.6	2.2	3.6	4.6	1.8	3.3	4.3		95
100				3.9	4.9	5.7	3.6	4.6	5.4	2.8	4	4.8	2.6	3.7	4.6		2.7	3.7			3.4		100
105				3.2	4.1	4.8	2.9	3.8	4.6	1.9	3.1	3.9		2.9	3.8			2.8			2.4		105
110				2.3	3.3	4	1.9	3.1	3.8		2.2	3.1		2	2.9								110
115					2.6	3.2		2.3	3			2.3			2.1								115
120						2.5			2.3														120

t_205_02019_00_000

STERLING CRANE

Lifting capacities Forces de levage

TVNZK

ft	42 - 197 ft T			23 ft V			62 ft NZK			360°			14600 lbs			85%			ft							
	42 ft + 23 ft			156 ft + 23 ft			166 ft + 23 ft			170 ft + 23 ft			180 ft + 23 ft			184 ft + 23 ft				194 ft + 23 ft			197 ft + 23 ft			
	62 ft			62 ft			62 ft			62 ft			62 ft			62 ft				62 ft						
	0°	20°	40°	0°	20°	40°	0°	20°	40°	0°	20°	40°	0°	20°	40°	0°	20°	40°	0°	20°	40°	0°	20°	40°		
17	8.3																								17	
18	8.3																								18	
19	8.3																								19	
20	8.3																								20	
22	8.2																								22	
24	8.2																								24	
26	8.1																								26	
28	8.1																								28	
30	8																								30	
32	8																								32	
34	8																								34	
36	7.9	7.7																							36	
38	7.8	7.7																							38	
40	7.8	7.7		8.4																					40	
45	7.5	7.5		8.3			7.3			7.6															45	
50	7.1	7.2		8.3			7.3			7.6		6.7			6.9										50	
55	6.7	6.8	6.9	8.2			7.3			7.6		6.7			6.8			6			5.8				55	
60	6.3	6.4	6.6	8.2			7.3			7.5		6.7			6.8			6			5.8				60	
65	6	6.1	6.2	8.1	7.7		7.3			7.5		6.7			6.8			6			5.8				65	
70	5.7	5.8	5.9	8	7.6		7.3	7.2		7.5	7.3		6.7		6.8			6			5.8				70	
75	5.4	5.5	5.6	7.9	7.5		7.3	7.1		7.4	7.2		6.7	6.6		6.5	6.7		6				5.7		75	
80	5.1	5.2	5.4	7.6	7.4		7.2	7		6.9	7.2		6.5	6.6		5.6	6.7		5.2	5.9		5	5.7		80	
85	4.7	5	5.1	7	7.2	6.8	6.5	6.8		5.9	7		5.5	6.5		4.6	6.6		4.3	5.8		4	5.7		85	
90	4.3	4.8	4.9	6	7	6.6	5.7	6.6	6.3	5	6.8	6.5	4.7	6.4	6.1	3.7	5.8		3.4	5.5		3.2	5.3		90	
95	4	4.5	4.7	5.1	6.7	6.4	4.8	6.4	6.1	4.1	6	6.4	3.8	5.7	6	2.7	4.9	6.2	2.4	4.6	5.5	2.2	4.4		95	
100	3.6	4.1	4.5	4.3	6	6.3	4	5.8	6	3.2	5.2	6.2	3	4.8	5.9	1.8	4.1	5.7		3.8	5.4		3.6	5.2	100	
105	3.4	3.7	4	3.6	5.2	6.1	3.2	4.9	5.9	2.4	4.4	5.8	2.2	4.1	5.5		3.3	4.8		3.1	4.6		2.9	4.4	105	
110	3.1	3.4	3.5	2.8	4.4	5.7	2.4	4.2	5.5		3.6	5		3.4	4.7		2.4	4.1		2.2	3.8			3.6	110	
115	2.8	3		2.1	3.7	5		3.5	4.7		2.9	4.2		2.6	4			3.3			3.1			2.9	115	
120					3.1	4.2		2.8	4		2.1	3.5		1.9	3.3			2.5			2.4			2.2	120	
125					2.4	3.5		2.1	3.3			2.8			2.6											125
130						2.9			2.7			2			1.8											130
135						2.3			2																	135

t_205_02119_00_000

STERLING CRANE

Lifting capacities Forces de levage

TVNZK

ft	42 - 197 ft T			46 ft V			35 ft NZK			360°			92600 lbs			85%			ft																		
	42 ft + 46 ft			156 ft + 46 ft			166 ft + 46 ft			170 ft + 46 ft			180 ft + 46 ft			184 ft + 46 ft				194 ft + 46 ft			197 ft + 46 ft														
	35 ft			35 ft			35 ft			35 ft			35 ft			35 ft				35 ft			35 ft														
	0°	20°	40°	0°	20°	40°	0°	20°	40°	0°	20°	40°	0°	20°	40°	0°	20°	40°	0°	20°	40°	0°	20°	40°	0°	20°	40°										
14	9.8																											14									
15	9.8																											15									
16	9.8																											16									
17	9.8																											17									
18	9.8																											18									
19	9.8																											19									
20	9.8																											20									
22	9.8																											22									
24	9.7	9.7																										24									
26	9.6	9.7																										26									
28	9.5	9.7																										28									
30	9.5	9.7																										30									
32	9.4	9.6																										32									
34	9.2	9.4	9																									34									
36	8.9	9.2	9																									36									
38	8.7	8.9	9																									38									
40	8.5	8.7	8.9	9.8																								40									
45	8	8.1	8.3	9.8					8.5				8.8															45									
50	7.4	7.6	7.7	9.7					8.5				8.7			7.6												50									
55	7	7.1	7.2	9.6	9.7				8.5				8.7			7.6									6.6		6.4	55									
60	6.5	6.6	6.8	9.5	9.5				8.5	8.5			8.6	8.7		7.5									6.6		6.4	60									
65	6.2	6.3	6.4	9.4	9.2	8.9			8.4	8.4			8.6	8.7		7.5	7.6								6.6	6.6	6.4	65									
70	5.8	5.9	6	9.2	8.9	8.6	8.3	8.2	8				8.5	8.5	8.4	7.5	7.6								6.6	6.6	6.4	6.4	70								
75	5.5	5.6	5.7	8.9	8.6	8.4	8.2	8	7.8				8.4	8.3	8.1	7.5	7.5	7.5								6.6	6.6	6.4	6.4	75							
80	5	5.3	5.4	8.7	8.3	8.1	8	7.7	7.6				8.2	8.1	7.9	7.4	7.4	7.3								6.5	6.6	6.6	6.4	6.4	80						
85	4.6	4.9	5.1	8.4	8	7.8	7.7	7.5	7.3				8.1	7.8	7.6	7.3	7.2	7.1								6.5	6.6	6.6	6.3	6.4	6.4	85					
90	4.2	4.5	4.8	8.1	7.8	7.6	7.5	7.2	7.1				7.9	7.6	7.4	7.2	7	6.9									6.5	6.6	6.6	6.3	6.4	6.4	90				
95	3.8	4.1	4.3	7.8	7.5	7.3	7.3	7	6.9				7.7	7.4	7.2	7	6.8	6.7									6.5	6.5	6.5	6.3	6.3	6.3	95				
100	3.4	3.7	3.8	7.6	7.2	7.1	7.1	6.8	6.7				7.4	7.1	7	6.9	6.6	6.5									7.1	6.9	6.8	6.4	6.3	6.3	6.3	6.2	6.2	100	
105	3.1	3.3	3.3	7.3	7	6.9	6.9	6.6	6.5				7.2	6.9	6.8	6.7	6.5	6.4									7	6.7	6.6	6.4	6.2	6.1	6.1	6.2	6.1	6.1	105
110	2.8	2.9	3.3	7.1	6.8	6.7	6.7	6.4	6.3				7	6.7	6.6	6.5	6.3	6.2									6.8	6.5	6.4	6.2	6.1	6	6.1	6	5.9	110	
115	2.6			6.8	6.6	6.5	6.4	6.2	6.1				6.8	6.5	6.4	6.3	6.1	6									6.6	6.4	6.3	6.1	5.9	5.9	6	5.9	5.8	115	
120				6.6	6.4	6.3	6.3	6.1	6				6.6	6.3	6.2	6.1	6	5.9									6.4	6.2	6.1	5.9	5.8	5.7	5.9	5.7	5.7	120	
125				6.4	6.2	6.1	6.1	5.9	5.8				6.4	6.2	6.1	6	5.8	5.7									6.2	6	5.9	5.8	5.6	5.6	5.7	5.6	5.5	125	
130				6.2	6	5.9	5.9	5.7	5.6				6.2	6	5.9	5.8	5.7	5.6									6.1	5.9	5.8	5.6	5.5	5.5	5.6	5.5	5.4	130	
135				6	5.8	5.8	5.7	5.6	5.5				6	5.8	5.8	5.7	5.5	5.5									5.9	5.7	5.7	5.5	5.4	5.3	5.5	5.3	5.3	5.3	135
140				5.9	5.7	5.6	5.5	5.4	5.4				5.9	5.7	5.6	5.5	5.4	5.3									5.8	5.6	5.5	5.4	5.3	5.2	5.4	5.2	5.2	140	
145				5.7	5.5	5.5	5.4	5.3	5.2				5.7	5.5	5.5	5.4	5.2	5.2									5.6	5.5	5.4	5.3	5.1	5.1	5.2	5.1	5.1	145	
150				5.5	5.4	5.3	5.2	5.1	5.1				5.6	5.4	5.4	5.2	5.1	5.1									5.5	5.3	5.3	5.1	5	5	5.1	5	5	150	
155				5.3	5.2	5.2	5	5	5				5.4	5.2	5.2	5	5	5									5.3	5.2	5.2	5	4.9	4.9	5	4.9	4.8	155	
160				5.1	5.1	5.1	4.8	4.8	4.9				5.3	5.1	5.1	4.9	4.8	4.8									5.2	5.1	5.1	4.9	4.8	4.8	4.9	4.8	4.8	160	
165				4.8	4.9	5	4.6	4.7	4.7				5.1	5	5	4.7	4.7	4.8									5	5	5	4.7	4.7	4.7	4.7	4.6	4.7	165	
170				4.6	4.7	4.8	4.4	4.5	4.5				4.9	4.9	4.9	4.5	4.6	4.7									4.9	4.8	4.9	4.5	4.6	4.6	4.4	4.5	4.6	170	
175				4.4	4.5	4.6	4.1	4.3	4.3				4.7	4.7	4.7	4.3	4.4	4.5									4.5	4.7	4.8	4.3	4.5	4.5	4.1	4.4	4.4	175	
180				4.2	4.3	4.4	3.9	4	4.1				4.5	4.5	4.6	4.2	4.3	4.4									4.1	4.5	4.6	3.9	4.2	4.3	3.7	4.2	4.2	180	
185				4	4.1	4.1	3.7	3.8	3.9				4.3	4.3	4.4	4	4.1	4.2									3.6	4.1	4.3	3.5	3.9	4.1	3.3	3.7	4	185	
190				3.8	3.9	3.9	3.5	3.6	3.6				4	4.1	4.2	3.7	3.9	3.9									3.2	3.6	3.9	3	3.5	3.7	2.9	3.3	3.6	190	
195				3.6	3.7	3.7	3.3	3.4	3.4				3.8	3.9	4	3.5	3.7	3.7									2.8	3.2	3.4	2.6	3	3.3	2.4	2.9	3.1	195	
200				3.4	3.5		3	3.2	3.2				3.4	3.7	3.7	3.2	3.5	3.6									2.4	2.8	3	2.2	2.6	2.8	2	2.4	2.7	200	
205				3.2	3.3		2.9	3					3	3.3	3.4	2.8	3.1	3.2									2	2.4	2.5	1.8	2.2	2.4		2	2.3	205	
210				3.1	3.1		2.7	2.8					2.6	2.8		2.4	2.8	2.9									1.9	2.1		1.8	2			1.9	210		
215				2.9	3		2.5	2.6					2.2	2.4		2	2.4	2.4																	215		
220				2.6	2.7		2.3	2.4					1.8	2			1.9																		220		
225				2.3			2.1	2.2																												225	
230								1.9																												230	

t_205_52201_00_000

STERLING CRANE

Lifting capacities Forces de levage

TVNZK

ft	42 - 194 ft T			46 ft V			62 ft NZK			360°			92600 lbs			85%			ft			
	42 ft + 46 ft			156 ft + 46 ft			166 ft + 46 ft			170 ft + 46 ft			180 ft + 46 ft			184 ft + 46 ft				194 ft + 46 ft		
	62 ft			62 ft			62 ft			62 ft			62 ft			62 ft				62 ft		
	0°	20°	40°	0°	20°	40°	0°	20°	40°	0°	20°	40°	0°	20°	40°	0°	20°	40°	0°	20°	40°	
18	6.6																					18
19	6.6																					19
20	6.6																					20
22	6.6																					22
24	6.6																					24
26	6.6																					26
28	6.6																					28
30	6.6																					30
32	6.5																					32
34	6.5																					34
36	6.5																					36
38	6.4																					38
40	6.4	6.6																				40
45	6.3	6.6																				45
50	6.1	6.4		6.6			5.8			5.9												50
55	5.8	6.1	5.9	6.6			5.8			5.9			5.2			5.2						55
60	5.5	5.7	5.9	6.6			5.8			5.9			5.1			5.2			4.5			60
65	5.2	5.4	5.7	6.5			5.7			5.8			5.1			5.1			4.4			65
70	4.9	5.1	5.3	6.5			5.7			5.8			5.1			5.1			4.4			70
75	4.6	4.8	5	6.4	6.5		5.7			5.8			5			5.1			4.4			75
80	4.4	4.5	4.7	6.3	6.3		5.7	5.8		5.7	5.9		5	5.2		5	5.2		4.4			80
85	4.1	4.3	4.5	6.2	6.2		5.6	5.7		5.7	5.8		5	5.2		5	5.2		4.4	4.5		85
90	3.9	4	4.2	6.2	6	5.8	5.5	5.6		5.7	5.7		5	5.1		5	5.2		4.3	4.5		90
95	3.7	3.8	4	6	5.8	5.6	5.5	5.4	5.3	5.6	5.6	5.5	5	5.1		5	5.2		4.3	4.5		95
100	3.5	3.6	3.8	5.9	5.6	5.4	5.4	5.2	5.1	5.6	5.4	5.3	4.9	5	4.9	5	5.1	5.1	4.3	4.5		100
105	3.3	3.4	3.6	5.7	5.4	5.3	5.3	5.1	5	5.5	5.3	5.2	4.9	4.9	4.8	5	5	5	4.3	4.5	4.4	105
110	3.1	3.3	3.4	5.5	5.2	5.1	5.2	4.9	4.8	5.4	5.1	5	4.9	4.8	4.7	4.9	4.9	4.9	4.3	4.5	4.4	110
115	2.8	3.1	3.2	5.3	5.1	5	5	4.8	4.7	5.2	5	4.9	4.8	4.7	4.6	4.9	4.8	4.7	4.3	4.4	4.4	115
120	2.5	2.9	3.1	5.2	4.9	4.8	4.8	4.6	4.6	5.1	4.9	4.7	4.7	4.5	4.5	4.8	4.7	4.6	4.3	4.3	4.3	120
125	2.5	2.7	2.8	5	4.8	4.7	4.7	4.5	4.4	4.9	4.7	4.6	4.6	4.4	4.4	4.7	4.6	4.5	4.2	4.2	4.2	125
130	2.5	2.6	2.4	4.8	4.6	4.5	4.5	4.4	4.3	4.8	4.6	4.5	4.4	4.3	4.2	4.6	4.4	4.4	4.1	4.1	4.1	130
135	2.5	2.6	2.2	4.7	4.5	4.4	4.4	4.2	4.2	4.6	4.4	4.4	4.3	4.2	4.1	4.5	4.3	4.3	4.1	4	4	135
140	2.5	2.6		4.5	4.3	4.3	4.3	4.1	4.1	4.5	4.3	4.2	4.2	4	4	4.4	4.2	4.2	4	3.9	3.9	140
145				4.4	4.2	4.1	4.2	4	4	4.4	4.2	4.1	4.1	3.9	3.9	4.3	4.1	4.1	3.9	3.8	3.8	145
150				4.3	4.1	4	4	3.9	3.9	4.2	4.1	4	4	3.8	3.8	4.2	4	4	3.9	3.7	3.7	150
155				4.1	4	3.9	3.9	3.8	3.7	4.1	4	3.9	3.9	3.7	3.7	4	3.9	3.9	3.8	3.6	3.7	155
160				4	3.8	3.8	3.8	3.7	3.6	4	3.9	3.8	3.8	3.6	3.6	3.9	3.8	3.8	3.7	3.6	3.6	160
165				3.9	3.7	3.7	3.7	3.6	3.6	3.9	3.8	3.7	3.7	3.5	3.5	3.8	3.7	3.7	3.6	3.5	3.5	165
170				3.7	3.6	3.6	3.6	3.5	3.5	3.8	3.7	3.6	3.6	3.5	3.5	3.7	3.6	3.6	3.5	3.4	3.4	170
175				3.6	3.5	3.5	3.5	3.4	3.4	3.7	3.5	3.5	3.5	3.4	3.4	3.6	3.5	3.5	3.4	3.3	3.3	175
180				3.5	3.4	3.4	3.3	3.3	3.3	3.6	3.4	3.5	3.4	3.3	3.3	3.6	3.4	3.4	3.3	3.2	3.3	180
185				3.4	3.3	3.4	3.2	3.2	3.2	3.5	3.4	3.4	3.3	3.2	3.2	3.5	3.3	3.4	3.2	3.2	3.2	185
190				3.3	3.3	3.3	3.1	3.1	3.1	3.4	3.3	3.3	3.2	3.1	3.2	3.3	3.3	3.3	3	3.1	3.1	190
195				3.2	3.2	3.2	2.9	3	3.1	3.3	3.2	3.2	3.1	3.1	3.1	3	3.2	3.2	2.8	3	3.1	195
200				3.1	3.1	3.2	2.7	2.9	3	3.2	3.1	3.2	2.9	3	3	2.6	3.1	3.2	2.5	2.9	3	200
205				2.9	3	3.1	2.6	2.7	2.9	3.1	3	3.1	2.8	2.9	2.9	2.2	2.9	3.1	2.1	2.7	2.9	205
210				2.7	2.9	3	2.4	2.6	2.8	2.9	3	3.1	2.6	2.8	2.8	1.9	2.6	3		2.4	2.8	210
215				2.6	2.7	2.8	2.2	2.4	2.6	2.6	2.9	3	2.4	2.6	2.8		2.2	2.6		2.1	2.5	215
220				2.4	2.6	2.6	2	2.2	2.4	2.2	2.7	2.9	2.1	2.5	2.6		1.8	2.2			2.1	220
225				2.3	2.4		1.8	2	2.1	1.9	2.4	2.6		2.3	2.4			1.8				225
230				2.1	2.3			1.9	1.9		2	2.2		1.9	2.2							230
235				2	2.1										1.8							235
240					1.9																	240

t_205_52301_00_000

STERLING CRANE

Lifting capacities Forces de levage

TVNZK

ft	42 - 197 ft T			46 ft V			35 ft NZK			360°			14600 lbs			85%			ft							
	42 ft + 46 ft			156 ft + 46 ft			166 ft + 46 ft			170 ft + 46 ft			180 ft + 46 ft			184 ft + 46 ft				194 ft + 46 ft			197 ft + 46 ft			
	35 ft			35 ft			35 ft			35 ft			35 ft			35 ft				35 ft						
	0°	20°	40°	0°	20°	40°	0°	20°	40°	0°	20°	40°	0°	20°	40°	0°	20°	40°	0°	20°	40°	0°	20°	40°		
14	8.9																								14	
15	8.9																									15
16	8.9																									16
17	8.9																									17
18	8.9																									18
19	8.9																									19
20	8.9																									20
22	8.9																									22
24	8.8	8.8																								24
26	8.7	8.8																								26
28	8.6	8.8																								28
30	8.6	8.8																								30
32	8.5	8.7																								32
34	8.3	8.5	8.2																							34
36	8.1	8.3	8.2																							36
38	7.9	8.1	8.2																							38
40	7.7	7.9	8.1	8.9																						40
45	7.2	7.4	7.5	8.9			7.8			8																45
50	6.8	6.9	7	8.9			7.8			7.9			6.9			6.9										50
55	6.3	6.4	6.6	8.8	8.8		7.7			7.9			6.9			6.9			6			5.8				55
60	5.9	6	6.2	8.7	8.6		7.7	7.8		7.9	7.9		6.9			6.9			6			5.8				60
65	5.6	5.7	5.8	8.6	8.4	8.1	7.6	7.7		7.8	7.9	7.6	6.8	6.9		6.9	6.9		6	6		5.8				65
70	5.3	5.4	5.5	8.4	8.1	7.8	7.6	7.5	7.3	7.7	7.7	7.6	6.8	6.9	7.4	6.7	6.9	6.8	6	6		5.8	5.8			70
75	5	5	5.1	8.1	7.8	7.6	7.4	7.2	7.1	7.3	7.6	7.4	6.7	6.9	6.8	6	6.9	6.9	5.5	6		5.3	5.8			75
80	4.6	4.8	4.9	7.3	7.6	7.3	7	7	6.9	6.2	7.3	7.1	5.8	6.7	6.6	4.9	6.2	6.8	4.5	5.8	6	4.2	5.5	5.8		80
85	4.2	4.5	4.6	6.3	7.2	7.1	5.9	6.7	6.7	5.2	6.4	6.9	4.8	6	6.4	3.9	5.2	6.3	3.5	4.8	5.7	3.3	4.6	5.6		85
90	3.8	4.1	4.3	5.3	6.4	6.9	4.9	6.1	6.4	4.2	5.4	6.4	3.9	5	5.9	2.7	4.2	5.2		3.9	4.9		3.7	4.7		90
95	3.5	3.7	3.9	4.4	5.5	6.2	4	5.1	6	3.3	4.5	5.4	3	4.2	5		3.3	4.3		3	4		2.8	3.8		95
100	3.1	3.3	3.4	3.5	4.5	5.4	3.2	4.3	5.1	2.3	3.6	4.5	1.9	3.4	4.2		2.2	3.4			3.1		2.9			100
105	2.8	3	3	2.7	3.7	4.5	2.3	3.4	4.2		2.8	3.6		2.4	3.4			2.4					2			105
110	2.6	2.7	3	1.8	3	3.7		2.7	3.4		1.8	2.8			2.6											110
115	2.4				2.2	2.9		1.8	2.7		2															115
120					2.2				1.9																	120

t_205_02219_00_000

STERLING CRANE

Lifting capacities Forces de levage

TVNZK

ft	42 - 194 ft T		46 ft V		62 ft NPK		360°		14600 lbs		85%		ft										
	42 ft + 46 ft			156 ft + 46 ft			166 ft + 46 ft			170 ft + 46 ft				180 ft + 46 ft			184 ft + 46 ft			194 ft + 46 ft			
	62 ft			62 ft			62 ft			62 ft				62 ft			62 ft			62 ft			
	0°	20°	40°	0°	20°	40°	0°	20°	40°	0°	20°	40°	0°	20°	40°	0°	20°	40°	0°	20°	40°		
18	6																						18
19	6																						19
20	6																						20
22	6																						22
24	6																						24
26	6																						26
28	6																						28
30	6																						30
32	5.9																						32
34	5.9																						34
36	5.8																						36
38	5.8																						38
40	5.8	6																					40
45	5.6	6																					45
50	5.6	5.8		6			5.3			5.3													50
55	5.3	5.5	5.3	6			5.3			5.3			4.6			4.7							55
60	5	5.2	5.3	5.9			5.2			5.3			4.7			4.7				3.9			60
65	4.7	4.9	5.1	5.9			5.2			5.3			4.6			4.7				4			65
70	4.4	4.6	4.8	5.9			5.2			5.3			4.6			4.6				4			70
75	4.2	4.4	4.6	5.8	5.9		5.2			5.3			4.6			4.6				4			75
80	4	4.1	4.3	5.8	5.8		5.1	5.3		5.2	5.3		4.6	4.7		4.6	4.7			4			80
85	3.7	3.9	4.1	5.6	5.6		5.1	5.2		5.1	5.3		4.4	4.7		3.9	4.7			3.5	4.1		85
90	3.5	3.7	3.8	5.2	5.4	5.3	4.8	5.1		4.3	5.2		3.9	4.7		3.1	4.7				4.1		90
95	3.4	3.5	3.6	4.6	5.3	5.1	4.1	4.9	4.8	3.6	5.1	5	3.1	4.6			4.3				3.9		95
100	3.2	3.3	3.4	3.8	5.1	5	3.4	4.8	4.7	2.7	4.6	4.8	2.3	4.2	4.5		3.5	4.6			3.2	4	100
105	3	3.1	3.3	3	4.6	4.8	2.7	4.4	4.5	1.8	3.9	4.7		3.5	4.4		2.8	4.3			2.4	4	105
110	2.8	3	3.1	2.3	4	4.6	1.8	3.7	4.4		3.2	4.4		2.8	4.2		1.9	3.6				3.3	110
115	2.6	2.8	3		3.4	4.5		3	4.2		2.4	3.8		2	3.5			2.9				2.6	115
120	2.3	2.6	2.8		2.6	3.9		2.3	3.6			3.1			2.9			2.2					120
125	2.3	2.4	2.5		1.9	3.3			3			2.5			2.2								125
130	2.3	2.3	2.1			2.6			2.3														130
135	2.3	2.3	1.9			1.9																	135
140	2.3	2.3																					140

t_205_02319_00_000