

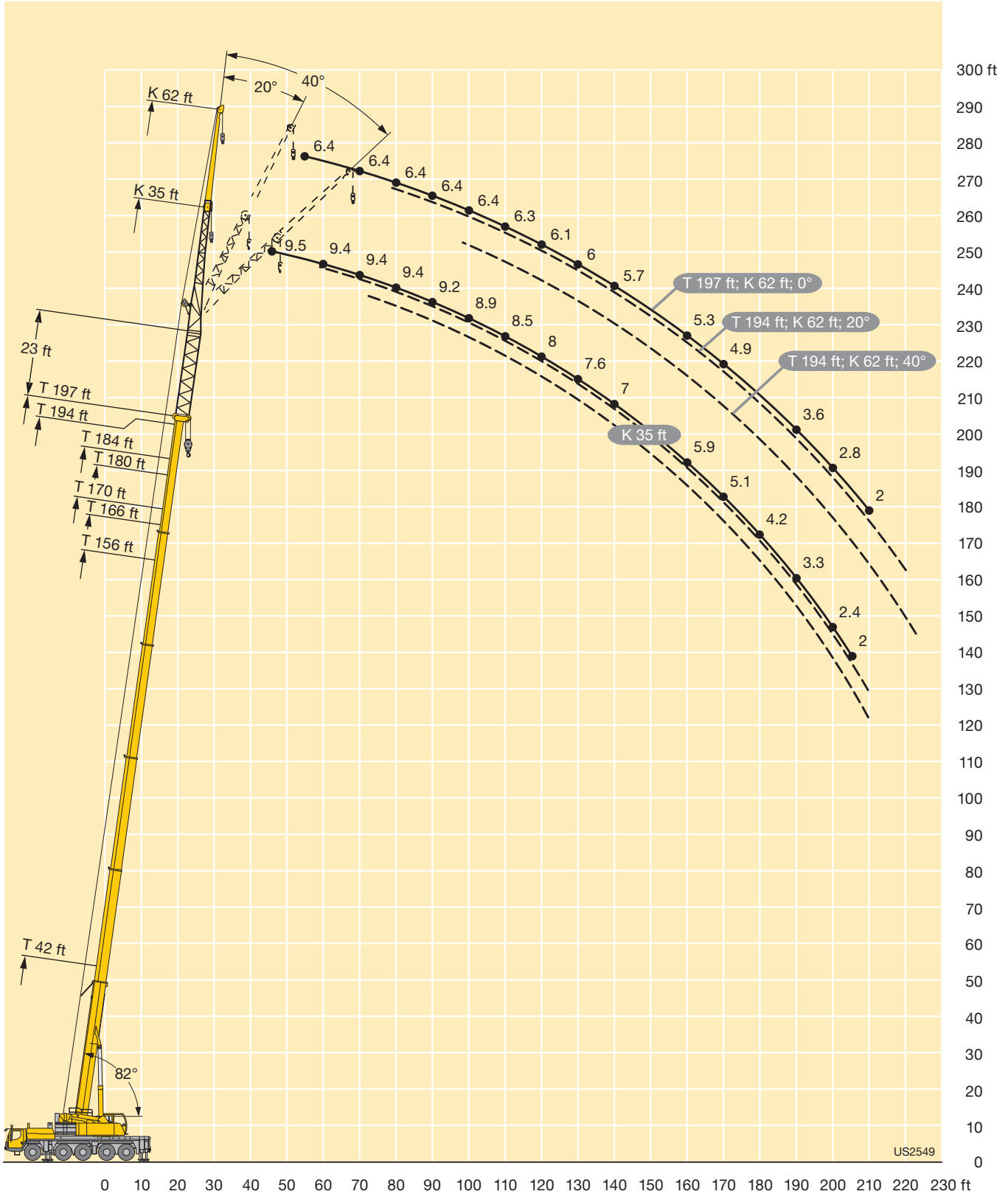


LIFTING CHARTS - All Terrain Cranes

LIEBHERR MODEL LTM 1130-5.1 - 155 TON CAPACITY

Lifting heights Hauteurs de levage

TVK

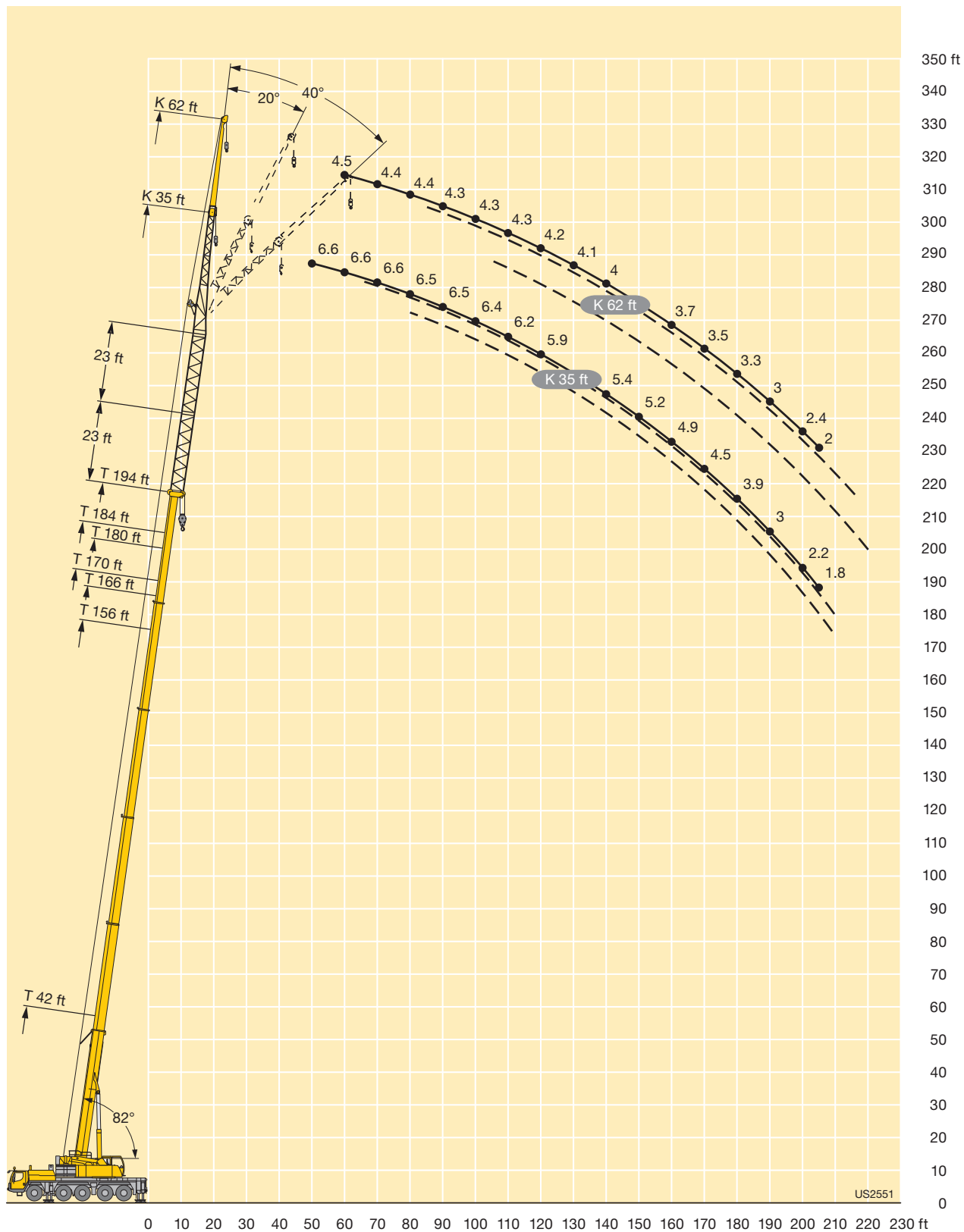


US2549

STERLING CRANE

Lifting heights Hauteurs de levage

TVK



STERLING CRANE

Lifting capacities Forces de levage

TVK

ft	42 - 197 ft		23 ft		35 ft		360°		92600 lbs		85%		ft						
	42 ft + 23 ft		156 ft + 23 ft		166 ft + 23 ft		170 ft + 23 ft		180 ft + 23 ft		184 ft + 23 ft			197 ft + 23 ft					
	35 ft		35 ft		35 ft		35 ft		35 ft		35 ft			35 ft					
	0°	20°	40°	0°	20°	40°	0°	20°	40°	0°	20°	40°	0°	20°	40°	0°	20°	40°	
14	14.6																		14
15	14.6																		15
16	14.5																		16
17	14.5																		17
18	14.5																		18
19	14.5																		19
20	14.4	14.6																	20
22	14.3	14.5																	22
24	14.1	14.4																	24
26	13.8	14																	26
28	13.4	13.5																	28
30	13	13.1	12.6																30
32	12.6	12.6	12.6																32
34	12.2	12.2	12.4	14.6															34
36	11.8	11.8	12	14.6															36
38	11.4	11.4	11.5	14.6			12.6			12.9									38
40	11	11	11.2	14.6			12.6			12.9			11						40
45	10.1	10.2	10.3	14.5			12.6			12.9			11			11.2			45
50	9.2	9.6	9.7	14.4	14.2		12.5			12.9			11			11.2			50
55	8.3	8.9	9.1	14.3	13.7		12.5	12.3		12.8	12.8		11	11		11.2			55
60	7.6	8.3	8.6	14.1	13.1	12.3	12.4	12		12.7	12.6		11	11		11.2	11.2		60
65	6.9	7.5	8	13.6	12.6	11.9	12.2	11.6	11	12.6	12.2	11.6	11	10.9	10.6	11.2	11.2		65
70	6.2	6.8	7.2	13.2	12.2	11.4	11.9	11.2	10.6	12.4	11.7	11.2	10.9	10.7	10.3	11.1	11.1	10.7	70
75	5.7	6.1	6.4	12.7	11.7	11.1	11.6	10.8	10.3	12.1	11.4	10.8	10.8	10.4	10	11	10.8	10.4	75
80	5.2	5.5	5.7	12.2	11.3	10.7	11.2	10.4	10	11.9	11	10.5	10.6	10.1	9.8	10.9	10.5	10.1	80
85	4.7	4.9	5	11.8	10.9	10.3	10.8	10.1	9.7	11.5	10.7	10.2	10.3	9.8	9.5	10.7	10.2	9.9	85
90	4.3	4.4		11.3	10.5	10	10.4	9.8	9.5	11.1	10.3	9.9	10.1	9.6	9.3	10.5	10	9.6	90
95				10.9	10.1	9.7	10	9.5	9.2	10.8	10	9.6	9.8	9.4	9.1	10.3	9.7	9.4	95
100				10.5	9.8	9.5	9.6	9.3	9	10.4	9.7	9.4	9.5	9.1	8.9	10	9.5	9.2	100
105				10	9.6	9.3	9.3	9	8.8	10	9.5	9.2	9.1	8.9	8.7	9.7	9.3	9	105
110				9.6	9.3	9	8.9	8.8	8.6	9.7	9.2	9	8.9	8.7	8.5	9.4	9	8.8	110
115				9.2	9	8.8	8.6	8.5	8.4	9.3	9	8.8	8.6	8.4	8.3	9.1	8.9	8.6	115
120				8.8	8.7	8.6	8.3	8.3	8.2	8.9	8.8	8.6	8.3	8.2	8.1	8.8	8.7	8.5	120
125				8.4	8.5	8.4	8	8	8	8.6	8.5	8.4	8	8	8	8.5	8.5	8.3	125
130				8	8.1	8.1	7.6	7.7	7.8	8.3	8.2	8.3	7.7	7.7	7.8	8.2	8.2	8.1	130
135				7.7	7.8	7.8	7.3	7.4	7.5	7.9	8	8.1	7.4	7.4	7.5	7.9	7.9	7.9	135
140				7.3	7.4	7.6	7	7.1	7.2	7.6	7.7	7.8	7.1	7.2	7.3	7.6	7.7	7.7	140
145				7	7.1	7.2	6.6	6.8	6.9	7.3	7.4	7.5	6.9	7	7	7.4	7.4	7.5	145
150				6.7	6.8	6.9	6.3	6.5	6.6	7	7.1	7.2	6.6	6.7	6.8	7.1	7.1	7.3	150
155				6.4	6.5	6.6	6	6.2	6.3	6.7	6.8	6.9	6.3	6.4	6.6	6.8	6.9	7	155
160				6.2	6.2	6.3	5.7	5.9	6	6.5	6.6	6.6	6.1	6.2	6.3	6.4	6.6	6.7	160
165				5.9	6	6.1	5.5	5.6	5.7	6.2	6.3	6.4	5.8	5.9	6	6	6.3	6.5	165
170				5.6	5.7	5.8	5.2	5.3	5.4	6	6.1	6.1	5.6	5.7	5.8	5.5	5.9	6.1	170
175				5.4	5.5	5.5	4.9	5.1	5.1	5.8	5.8	5.9	5.3	5.4	5.5	5	5.5	5.7	175
180				5.1	5.2		4.7	4.8	4.9	5.4	5.6	5.7	5.1	5.2	5.3	4.5	5	5.2	180
185				4.9	5		4.5	4.6	4.6	5	5.3	5.4	4.9	5	5	4	4.4	4.7	185
190				4.7	4.8		4.2	4.3		4.5	4.8		4.5	4.7	4.8	3.5	3.9	4.1	190
195				4.5	4.6		4	4.1		4	4.3		4	4.3	4.4	3	3.4	3.6	195
200				4.3	4.4		3.8	3.9		3.6	3.9		3.5	3.8		2.6	2.9	3.1	200
205				3.2			3.6	3.7		3.2	3.4		3.1	3.4		2.2	2.5		205
210							3.4	3.5		2.8	2.9		2.7	2.9		1.8	2		210
215							2.4			2.5	2.5		2.3	2.5					215
220													2	2.1					220

t_205_51301_00_000 / 51331_00_000 / 51361_00_000

STERLING CRANE

Lifting capacities Forces de levage

TVK

ft	42 - 197 ft T			23 ft V			62 ft K			360°			92600 lbs			85%			ft						
	42 ft + 23 ft			156 ft + 23 ft			166 ft + 23 ft			170 ft + 23 ft			180 ft + 23 ft			184 ft + 23 ft				194 ft + 23 ft			197 ft + 23 ft		
	62 ft			62 ft			62 ft			62 ft			62 ft			62 ft				62 ft			62 ft		
	0°	20°	40°	0°	20°	40°	0°	20°	40°	0°	20°	40°	0°	20°	40°	0°	20°	40°	0°	20°	40°	0°			
17	9.2																							17	
18	9.2																								18
19	9.2																								19
20	9.1																								20
22	9.1																								22
24	9.1																								24
26	9																								26
28	9																								28
30	8.9																								30
32	8.8																								32
34	8.8	8.5																							34
36	8.7	8.5																							36
38	8.6	8.5																							38
40	8.5	8.5		9.2																					40
45	8.2	8.3		9.1			8.1			8.3															45
50	7.8	7.9	7.7	9.1			8.1			8.3			7.4			7.5			6.6						50
55	7.4	7.5	7.7	9			8.1			8.3			7.4			7.5			6.6			6.4			55
60	7	7.1	7.3	9			8.1			8.3			7.4			7.5			6.6			6.4			60
65	6.6	6.7	6.9	8.9	8.3		8.1			8.2			7.4			7.4			6.6			6.4			65
70	6.3	6.3	6.5	8.8	8.3		8.1	7.9		8.2	8.1		7.4			7.4			6.6			6.4			70
75	6	6	6.2	8.7	8.3		8	7.8		8.2	8		7.3	7.1		7.4	7.3		6.6			6.4			75
80	5.6	5.7	5.9	8.6	8.1		7.9	7.7		8.1	7.9		7.3	7.1		7.4	7.3		6.6	6.4		6.4			80
85	5.2	5.5	5.6	8.5	7.9	7.5	7.9	7.5		8.1	7.7		7.3	7.1		7.3	7.3		6.6	6.4		6.4			85
90	4.8	5.2	5.4	8.3	7.7	7.3	7.7	7.3	6.9	8	7.6	7.2	7.3	7.1	6.7	7.3	7.3		6.5	6.4		6.4			90
95	4.4	4.9	5.2	8.1	7.5	7.1	7.6	7.1	6.8	7.8	7.4	7	7.2	6.9	6.7	7.3	7.1	6.8	6.5	6.4	6.1	6.4			95
100	4	4.5	4.9	7.8	7.3	6.9	7.4	6.9	6.6	7.7	7.2	6.8	7.1	6.7	6.5	7.2	7	6.7	6.5	6.4	6.1	6.4			100
105	3.7	4.1	4.4	7.6	7.1	6.7	7.2	6.7	6.4	7.5	7	6.7	7	6.6	6.3	7.1	6.8	6.5	6.5	6.3	6.1	6.4			105
110	3.4	3.7	3.8	7.4	6.9	6.6	7	6.5	6.3	7.3	6.8	6.5	6.8	6.4	6.2	7	6.6	6.4	6.4	6.2	6	6.3			110
115	3.1	3.3		7.2	6.7	6.4	6.8	6.4	6.1	7.1	6.6	6.4	6.7	6.3	6.1	6.9	6.5	6.2	6.3	6.1	5.9	6.2			115
120				7	6.5	6.3	6.6	6.2	6	6.9	6.4	6.2	6.5	6.1	6	6.7	6.3	6.1	6.2	6	5.8	6.1			120
125				6.8	6.3	6.1	6.5	6.1	5.9	6.8	6.3	6.1	6.4	6	5.8	6.6	6.2	6	6.1	5.8	5.7	6			125
130				6.6	6.2	6	6.3	5.9	5.8	6.6	6.1	6	6.2	5.8	5.7	6.5	6.1	5.9	6	5.7	5.6	6			130
135				6.4	6	5.9	6.1	5.8	5.6	6.4	6	5.9	6.1	5.7	5.6	6.3	5.9	5.8	5.9	5.6	5.5	5.9			135
140				6.3	5.9	5.7	5.9	5.6	5.5	6.3	5.9	5.7	5.9	5.6	5.5	6.2	5.8	5.7	5.8	5.5	5.4	5.7			140
145				6.1	5.7	5.6	5.8	5.5	5.4	6.1	5.7	5.6	5.8	5.5	5.4	6	5.7	5.6	5.7	5.4	5.3	5.6			145
150				5.9	5.6	5.5	5.6	5.4	5.3	6	5.6	5.5	5.6	5.4	5.3	5.9	5.6	5.5	5.5	5.3	5.2	5.5			150
155				5.7	5.5	5.4	5.4	5.3	5.2	5.8	5.5	5.4	5.5	5.2	5.2	5.7	5.5	5.4	5.4	5.2	5.1	5.4			155
160				5.5	5.4	5.3	5.3	5.1	5.1	5.7	5.4	5.3	5.3	5.2	5.1	5.6	5.4	5.3	5.3	5.1	5	5.3			160
165				5.3	5.3	5.2	5	5	5	5.5	5.3	5.2	5.1	5.1	5	5.4	5.3	5.2	5.1	5	5	5.1			165
170				5.1	5.1	5.1	4.8	4.9	5	5.3	5.2	5.2	5	4.9	5	5.3	5.2	5.1	5	4.9	4.9	4.9			170
175				4.9	4.9	5.1	4.6	4.8	4.9	5.1	5.1	5.1	4.8	4.8	4.9	5.1	5.1	5.1	4.8	4.8	4.8	4.7			175
180				4.7	4.8	4.9	4.4	4.6	4.7	4.9	5	5	4.6	4.7	4.8	4.7	5	5	4.6	4.7	4.8	4.4			180
185				4.5	4.6	4.8	4.1	4.4	4.5	4.7	4.8	4.9	4.4	4.6	4.7	4.3	4.8	4.9	4.2	4.6	4.7	4			185
190				4.3	4.4	4.5	3.9	4.2	4.3	4.5	4.7	4.8	4.2	4.4	4.6	3.9	4.5	4.9	3.8	4.4	4.5	3.6			190
195				4.1	4.2	4.3	3.7	3.9	4.1	4.4	4.5	4.6	4	4.2	4.4	3.5	4.2	4.6	3.3	4.1	4.4	3.1			195
200				3.9	4	4.1	3.6	3.7	3.9	4.1	4.3	4.4	3.8	4	4.2	3.1	3.8	4.2	3	3.7	4.1	2.8			200
205				3.7	3.8		3.4	3.5	3.6	3.7	4.1	4.2	3.5	3.8	4	2.7	3.4	3.7	2.6	3.2	3.7	2.4			205
210				3.6	3.7		3.2	3.3	3.4	3.3	3.8	4	3.2	3.6	3.8	2.3	3	3.3	2.2	2.8	3.2	2			210
215				3.4	3.5		3	3.1		2.9	3.4	3.6	2.8	3.3	3.5	2	2.6	2.8	1.8	2.5	2.8				215
220				3.3	3.3		2.8	2.9		2.6	3		2.4	2.9	3.1		2.1	2.4		2.1	2.4				220
225				3	3.2		2.7	2.8		2.2	2.6		2.1	2.5			1.9				2				225
230				2.6			2.5	2.6		1.9	2.2			2.2											230
235							2.2	2.4			1.8			1.8											235
240							1.9																		240

t_205_51401_00_000 / 51431_00_000 / 51461_00_000

STERLING CRANE

Lifting capacities Forces de levage

TVK

		42 - 197 ft T			23 ft V			35 ft K			360°			14600 lbs			85%										
		42 ft + 23 ft			156 ft + 23 ft			166 ft + 23 ft			170 ft + 23 ft			180 ft + 23 ft			184 ft + 23 ft			197 ft + 23 ft							
		35 ft			35 ft			35 ft			35 ft			35 ft			35 ft			35 ft							
		0°	20°	40°	0°	20°	40°	0°	20°	40°	0°	20°	40°	0°	20°	40°	0°	20°	40°	0°	20°	40°	0°	20°	40°	ft	
14	14	13.3																							14		
15	15	13.2																							15		
16	16	13.2																							16		
17	17	13.2																							17		
18	18	13.2																							18		
19	19	13.2																							19		
20	20	13.1	13.2																						20		
22	22	13	13.2																						22		
24	24	12.8	13.1																						24		
26	26	12.5	12.7																						26		
28	28	12.2	12.3																						28		
30	30	11.8	11.9	11.5																					30		
32	32	11.4	11.4	11.5																					32		
34	34	11.1	11.1	11.2	13.3																				34		
36	36	10.7	10.7	10.9	13.3																				36		
38	38	10.4	10.4	10.5	13.2			11.5				11.7													38		
40	40	10	10	10.2	13.2			11.5				11.7			10										40		
45	45	9.2	9.3	9.4	13.2			11.4				11.7			10			10.2					8.6		45		
50	50	8.4	8.7	8.8	13.1	12.9		11.4				11.7			10			10.2					8.6		50		
55	55	7.6	8.1	8.3	13	12.4		11.4	11.2			11.6	11.7		10	10		10.2					8.6		55		
60	60	6.9	7.6	7.8	12.8	11.9	11.2	11.3	10.9			11.6	11.4		10	10		10.2	10.2				8.5	8.6	60		
65	65	6.2	6.8	7.3	12.1	11.5	10.8	11.1	10.5	10		11	11.1	10.5	9.9	9.9	9.6	9.4	10.2				8.3	8.6	65		
70	70	5.7	6.2	6.6	10.7	11	10.4	10.2	10.1	9.7		9.4	10.7	10.1	9	9.7	9.3	7.9	9.5	9.7			7.2	8.5	8.4	70	
75	75	5.2	5.6	5.9	9.2	10.4	10	8.8	9.8	9.4		8	9.4	9.8	7.6	9	9.1	6.6	8.1	9.2			6	7.4	8.3	75	
80	80	4.7	5	5.2	7.8	9.1	9.7	7.5	8.8	9.1		6.7	8.1	9.2	6.5	7.7	8.7	5.4	6.8	8			4.9	6.2	7.4	80	
85	85	4.3	4.5	4.6	6.7	7.9	8.9	6.3	7.6	8.6		5.6	6.9	7.9	5.4	6.6	7.6	4.2	5.6	6.8			3.8	5.2	6.2	85	
90	90	3.9	4		5.6	6.8	7.7	5.3	6.5	7.5		4.6	5.8	6.8	4.3	5.6	6.5	3.2	4.6	5.6			2.8	4.2	5.2	90	
95	95				4.7	5.8	6.6	4.4	5.5	6.4		3.6	4.8	5.7	3.5	4.6	5.5	2.2	3.6	4.6				3.2	4.3	95	
100	100				3.9	4.9	5.6	3.6	4.6	5.4		2.8	3.9	4.8	2.5	3.7	4.6		2.6	3.7					3.3	100	
105	105				3.1	4	4.8	2.8	3.8	4.5		1.8	3.1	3.9		2.9	3.7			2.7					2.4	105	
110	110				2.3	3.3	3.9	1.9	3	3.7			2.2	3.1		2	2.9									110	
115	115					2.5	3.2		2.2	3				2.2			2.1									115	
120	120						2.5			2.2																120	

t_205_01319_00_000 / 01349_00_000 / 01379_00_000

STERLING CRANE

Lifting capacities Forces de levage

TVK

ft		42 ft + 23 ft			156 ft + 23 ft			166 ft + 23 ft			170 ft + 23 ft			180 ft + 23 ft			184 ft + 23 ft			194 ft + 23 ft			197 ft + 23 ft	ft	
		62 ft			62 ft			62 ft			62 ft			62 ft			62 ft			62 ft					
		0°	20°	40°	0°	20°	40°	0°	20°	40°	0°	20°	40°	0°	20°	40°	0°	20°	40°	0°	20°	40°	0°		
17	8.3																						17		
18	8.3																							18	
19	8.3																							19	
20	8.3																							20	
22	8.2																							22	
24	8.2																							24	
26	8.1																							26	
28	8																							28	
30	8																							30	
32	8																							32	
34	8	7.7																						34	
36	7.9	7.7																						36	
38	7.8	7.7																						38	
40	7.8	7.7		8.3																				40	
45	7.4	7.5		8.3			7.4			7.6														45	
50	7.1	7.2	7	8.3			7.4			7.6		6.7		6.9			6							50	
55	6.7	6.8	7	8.2			7.4			7.5		6.7		6.8			6					5.8		55	
60	6.3	6.4	6.6	8.2			7.4			7.5		6.7		6.8			6					5.8		60	
65	6	6.1	6.3	8.1	7.6		7.3			7.5		6.7		6.8			6					5.8		65	
70	5.7	5.8	5.9	8	7.6		7.3	7.1		7.5	7.3	6.7		6.7			6					5.8		70	
75	5.4	5.5	5.6	7.9	7.5		7.3	7.1		7.4	7.3	6.7	6.5	6.4	6.6		6					5.8		75	
80	5.1	5.2	5.4	7.6	7.4		7.1	7		6.8	7.2	6.4	6.5	5.5	6.6		5.1	5.8				4.9		80	
85	4.7	5	5.1	7	7.2	6.8	6.4	6.8		5.9	7	5.5	6.5	4.5	6.6		4.2	5.8				3.9		85	
90	4.3	4.8	4.9	5.9	7	6.6	5.6	6.6	6.3	4.9	6.9	6.5	4.6	6.3	6.1	3.6	5.7				3.2	5.4	3.1	90	
95	4	4.5	4.7	5	6.6	6.5	4.7	6.4	6.2	4	6	6.4	3.7	5.6	6	2.7	4.8	6.2			2.2	4.5	5.5	2.1	95
100	3.7	4.1	4.5	4.2	6	6.3	3.9	5.7	6	3.1	5.1	6.2	2.9	4.8	5.9		4	5.6				3.7	5.3		100
105	3.4	3.7	4	3.5	5.2	6.1	3.1	4.9	5.9	2.3	4.3	5.8	2	4	5.4		3.2	4.8				3	4.5		105
110	3.1	3.4	3.5	2.7	4.4	5.6	2.4	4.1	5.5		3.5	4.9		3.3	4.7		2.3	4				2.1	3.7		110
115	2.9	3		2	3.7	4.9		3.4	4.7		2.8	4.2		2.5	3.9			3.2				3			115
120					3	4.2		2.8	4		2	3.4		1.8	3.3			2.4					2.4		120
125					2.3	3.5		2	3.3			2.8			2.5										125
130						2.9			2.6			2			1.8										130
135						2.2			1.9																135

t_205_01419_00_000 / 01449_00_000 / 01479_00_000

STERLING CRANE

Lifting capacities Forces de levage

TVK

ft	42 - 194 ft		46 ft		35 ft		360°		92600 lbs		85%		ft						
	T		V		K		360°		92600 lbs		85%								
	42 ft + 46 ft		156 ft + 46 ft		166 ft + 46 ft		170 ft + 46 ft		180 ft + 46 ft		184 ft + 46 ft			194 ft + 46 ft					
	35 ft			35 ft			35 ft			35 ft			35 ft						
	0°	20°	40°	0°	20°	40°	0°	20°	40°	0°	20°	40°	0°	20°	40°	0°	20°	40°	
14	9.7																		14
15	9.7																		15
16	9.7																		16
17	9.7																		17
18	9.7																		18
19	9.7																		19
20	9.7																		20
22	9.7																		22
24	9.7	9.7																	24
26	9.6	9.7																	26
28	9.5	9.7																	28
30	9.5	9.7																	30
32	9.3	9.6																	32
34	9.1	9.4	9.1																34
36	8.9	9.1	9.1																36
38	8.7	8.9	9																38
40	8.5	8.6	8.9	9.7															40
45	8	8.1	8.3	9.7			8.5			8.8									45
50	7.4	7.5	7.7	9.7			8.5			8.7			7.6			7.6			50
55	7	7.1	7.2	9.7	9.7		8.5			8.7			7.6			7.6			55
60	6.5	6.6	6.8	9.6	9.5		8.5	8.5		8.6	8.7		7.6	7.7		7.6			60
65	6.2	6.2	6.4	9.4	9.2	8.9	8.4	8.4		8.6	8.6		7.5	7.6		7.6	7.6		65
70	5.8	5.9	6	9.2	8.9	8.6	8.3	8.2	8	8.5	8.5	8.4	7.5	7.6		7.5	7.6		70
75	5.4	5.5	5.7	8.9	8.6	8.4	8.2	8	7.8	8.4	8.3	8.1	7.4	7.6	7.5	7.5	7.6	7.6	75
80	5	5.2	5.4	8.7	8.3	8.1	8	7.7	7.5	8.2	8.1	7.9	7.4	7.4	7.3	7.5	7.6	7.5	80
85	4.6	4.9	5.1	8.4	8	7.8	7.7	7.5	7.3	8.1	7.8	7.6	7.3	7.2	7.1	7.4	7.5	7.3	85
90	4.2	4.5	4.8	8.1	7.8	7.6	7.5	7.2	7.1	7.9	7.6	7.4	7.2	7	6.9	7.3	7.3	7.1	90
95	3.8	4.1	4.3	7.8	7.5	7.3	7.3	7	6.9	7.7	7.4	7.2	7	6.8	6.7	7.2	7.1	7	95
100	3.4	3.7	3.8	7.6	7.3	7.1	7.1	6.8	6.7	7.5	7.1	7	6.9	6.6	6.5	7.1	6.9	6.8	100
105	3.1	3.3	3.3	7.3	7	6.9	6.9	6.6	6.5	7.2	6.9	6.8	6.7	6.5	6.4	7	6.7	6.6	105
110	2.8	2.9	3.2	7.1	6.8	6.7	6.7	6.4	6.3	7	6.7	6.6	6.5	6.3	6.2	6.8	6.6	6.4	110
115	2.6			6.9	6.6	6.5	6.4	6.2	6.1	6.8	6.5	6.4	6.3	6.1	6	6.6	6.4	6.3	115
120				6.6	6.4	6.3	6.3	6	6	6.6	6.3	6.2	6.2	6	5.9	6.4	6.2	6.1	120
125				6.4	6.2	6.1	6.1	5.9	5.8	6.4	6.2	6.1	6	5.8	5.7	6.2	6.1	6	125
130				6.2	6	5.9	5.9	5.7	5.6	6.2	6	5.9	5.8	5.7	5.6	6.1	5.9	5.8	130
135				6	5.8	5.8	5.7	5.6	5.5	6	5.8	5.8	5.7	5.5	5.5	5.9	5.7	5.7	135
140				5.9	5.7	5.6	5.5	5.4	5.4	5.9	5.7	5.6	5.5	5.4	5.3	5.8	5.6	5.5	140
145				5.7	5.5	5.5	5.4	5.3	5.2	5.7	5.5	5.5	5.4	5.3	5.2	5.6	5.5	5.4	145
150				5.5	5.4	5.4	5.2	5.1	5.1	5.6	5.4	5.4	5.2	5.1	5.1	5.5	5.3	5.3	150
155				5.3	5.2	5.2	5	5	5	5.4	5.3	5.2	5	5	5	5.3	5.2	5.2	155
160				5.1	5.1	5.1	4.8	4.8	4.9	5.3	5.1	5.1	4.9	4.9	4.8	5.2	5.1	5.1	160
165				4.8	4.9	5	4.6	4.7	4.7	5.1	5	5	4.7	4.7	4.7	5	5	5	165
170				4.6	4.7	4.8	4.3	4.5	4.5	4.9	4.9	4.9	4.5	4.6	4.6	4.9	4.8	4.9	170
175				4.4	4.5	4.6	4.1	4.2	4.3	4.7	4.7	4.7	4.3	4.4	4.5	4.5	4.7	4.8	175
180				4.2	4.3	4.4	3.9	4	4.1	4.5	4.5	4.6	4.1	4.2	4.4	4.1	4.5	4.7	180
185				4	4.1	4.1	3.7	3.8	3.9	4.3	4.3	4.4	4	4	4.2	3.6	4	4.3	185
190				3.8	3.9	3.9	3.5	3.6	3.6	4	4.1	4.2	3.8	3.9	3.9	3.2	3.6	3.9	190
195				3.6	3.7	3.7	3.3	3.4	3.4	3.8	3.9	4	3.5	3.7	3.7	2.8	3.2	3.4	195
200				3.4	3.5		3.1	3.2	3.2	3.4	3.6	3.7	3.2	3.5	3.5	2.4	2.8	3	200
205				3.2	3.3		2.9	3		2.9	3.3	3.4	2.8	3.1	3.2	1.9	2.3	2.5	205
210				3.1	3.1		2.7	2.8		2.5	2.8		2.4	2.7	2.9		1.9	2.1	210
215				2.9	3		2.5	2.6		2.2	2.4		2	2.3	2.5				215
220				2.6	2.7		2.3	2.4		1.8	2								220
225				2.2			2	2.2											225
230								1.9											230

t_205_51501_00_000 / 51531_00_000 / 51561_00_000

STERLING CRANE

Lifting capacities Forces de levage

TVK

ft	42 - 194 ft		46 ft		62 ft		360°		92600 lbs		85%		ft											
	T		V		K		360°		92600 lbs		85%													
	42 ft + 46 ft		156 ft + 46 ft		166 ft + 46 ft		170 ft + 46 ft		180 ft + 46 ft		184 ft + 46 ft			194 ft + 46 ft										
	62 ft			62 ft			62 ft			62 ft			62 ft			62 ft								
	0°	20°	40°	0°	20°	40°	0°	20°	40°	0°	20°	40°	0°	20°	40°	0°	20°	40°	0°	20°	40°			
17	6.6																						17	
18	6.6																							18
19	6.6																							19
20	6.6																							20
22	6.6																							22
24	6.6																							24
26	6.6																							26
28	6.6																							28
30	6.5																							30
32	6.5																							32
34	6.5																							34
36	6.5																							36
38	6.4	6.6																						38
40	6.4	6.6																						40
45	6.3	6.6		6.6																				45
50	6.1	6.3		6.6			5.8			5.9														50
55	5.8	6	5.9	6.6			5.8			5.9			5.2			5.2								55
60	5.5	5.7	5.9	6.5			5.7			5.9			5.1			5.2			4.5					60
65	5.2	5.4	5.6	6.5			5.7			5.8			5.1			5.1			4.4					65
70	4.9	5.1	5.3	6.4			5.7			5.8			5.1			5.1			4.4					70
75	4.6	4.8	5	6.4	6.5		5.7	5.8		5.7	5.9		5			5.1			4.4					75
80	4.4	4.5	4.7	6.3	6.3		5.6	5.8		5.7	5.9		5	5.2		5	5.2		4.4					80
85	4.1	4.2	4.5	6.3	6.2		5.6	5.7		5.7	5.8		5	5.1		5	5.2		4.4	4.5				85
90	3.9	4	4.2	6.2	6	5.8	5.5	5.6		5.7	5.7		5	5.1		5	5.2		4.3	4.5				90
95	3.7	3.8	4	6.1	5.8	5.6	5.5	5.4	5.3	5.6	5.6	5.4	5	5.1		5	5.1		4.3	4.5				95
100	3.5	3.6	3.8	5.9	5.6	5.4	5.4	5.3	5.1	5.6	5.4	5.3	4.9	5.1	4.9	5	5.1	5.1	4.3	4.5				100
105	3.3	3.4	3.6	5.7	5.4	5.3	5.3	5.1	5	5.5	5.3	5.2	4.9	4.9	4.8	4.9	5	5	4.3	4.5	4.4			105
110	3.1	3.3	3.4	5.5	5.3	5.1	5.2	4.9	4.8	5.4	5.1	5	4.9	4.8	4.7	4.9	4.9	4.9	4.3	4.4	4.4			110
115	2.8	3.1	3.2	5.3	5.1	5	5	4.8	4.7	5.2	5	4.9	4.8	4.7	4.6	4.8	4.8	4.8	4.3	4.4	4.4			115
120	2.5	2.9	3.1	5.2	4.9	4.8	4.8	4.6	4.6	5.1	4.9	4.7	4.7	4.6	4.5	4.7	4.7	4.6	4.2	4.3	4.3			120
125	2.5	2.6	2.8	5	4.8	4.7	4.7	4.5	4.4	4.9	4.7	4.6	4.6	4.4	4.3	4.7	4.6	4.5	4.2	4.2	4.2			125
130	2.5	2.5	2.4	4.8	4.6	4.5	4.5	4.4	4.3	4.8	4.6	4.5	4.4	4.3	4.2	4.6	4.5	4.4	4.1	4.1	4.1			130
135	2.5	2.5	2.2	4.7	4.5	4.4	4.4	4.2	4.2	4.7	4.4	4.4	4.3	4.2	4.1	4.5	4.3	4.3	4.1	4	4			135
140	2.5	2.5		4.5	4.3	4.3	4.3	4.1	4.1	4.5	4.3	4.3	4.2	4.1	4	4.4	4.2	4.2	4	3.9	3.9			140
145				4.4	4.2	4.2	4.2	4	3.9	4.4	4.2	4.1	4.1	3.9	3.9	4.3	4.1	4.1	3.9	3.8	3.8			145
150				4.3	4.1	4	4	3.9	3.8	4.2	4.1	4	4	3.8	3.8	4.2	4	4	3.9	3.7	3.7			150
155				4.1	4	3.9	3.9	3.7	3.7	4.1	4	3.9	3.9	3.7	3.7	4.1	3.9	3.9	3.8	3.6	3.6			155
160				4	3.8	3.8	3.8	3.6	3.6	4	3.9	3.8	3.8	3.6	3.6	3.9	3.8	3.8	3.7	3.6	3.6			160
165				3.9	3.7	3.7	3.7	3.5	3.5	3.9	3.8	3.7	3.7	3.5	3.6	3.8	3.7	3.7	3.6	3.5	3.5			165
170				3.7	3.6	3.6	3.6	3.5	3.5	3.8	3.7	3.6	3.6	3.4	3.5	3.7	3.6	3.6	3.5	3.4	3.4			170
175				3.6	3.5	3.5	3.5	3.3	3.4	3.7	3.6	3.5	3.5	3.4	3.4	3.6	3.5	3.5	3.4	3.3	3.3			175
180				3.5	3.4	3.4	3.3	3.3	3.3	3.6	3.5	3.5	3.4	3.3	3.3	3.6	3.4	3.4	3.3	3.2	3.2			180
185				3.4	3.3	3.4	3.2	3.2	3.2	3.5	3.4	3.4	3.3	3.2	3.2	3.5	3.3	3.4	3.2	3.2	3.2			185
190				3.3	3.3	3.3	3	3.1	3.1	3.4	3.3	3.3	3.2	3.1	3.1	3.3	3.3	3.3	3	3.1	3.1			190
195				3.2	3.2	3.2	2.9	3	3.1	3.3	3.2	3.2	3.1	3.1	3.1	3	3.2	3.2	2.8	3	3			195
200				3.1	3.1	3.1	2.7	2.9	3	3.2	3.1	3.2	2.9	3	3	2.6	3.1	3.2	2.4	2.9	3			200
205				2.9	3	3.1	2.5	2.7	2.9	3.1	3	3.1	2.8	2.9	2.9	2.2	2.9	3.1	2	2.7	2.9			205
210				2.8	2.9	3	2.4	2.6	2.8	2.8	3	3	2.6	2.8	2.8	1.9	2.5	3		2.4	2.8			210
215				2.6	2.7	2.8	2.2	2.4	2.6	2.5	2.9	2.9	2.4	2.6	2.8		2.2	2.6		2	2.5			215
220				2.4	2.5	2.6	2	2.2	2.3	2.2	2.7	2.8	2.1	2.5	2.6		1.8	2.2			2.1			220
225				2.3	2.4		1.8	2	2.1	1.9	2.4	2.6		2.3	2.4		1.8							225
230				2.1	2.2			1.8	1.9		2	2.2		1.9	2.2									230
235				2	2.1										1.8									235
240					1.9																			240

t_205_51601_00_000 / 51631_00_000 / 51661_00_000

STERLING CRANE

Lifting capacities Forces de levage

TVK

ft	42 - 194 ft T		46 ft V		35 ft K		360°		14600 lbs		85%		ft										
	42 ft + 46 ft			156 ft + 46 ft			166 ft + 46 ft			170 ft + 46 ft				180 ft + 46 ft			184 ft + 46 ft			194 ft + 46 ft			
	35 ft			35 ft			35 ft			35 ft				35 ft			35 ft			35 ft			
	0°	20°	40°	0°	20°	40°	0°	20°	40°	0°	20°	40°	0°	20°	40°	0°	20°	40°	0°	20°	40°		
14	8.9																						14
15	8.9																						15
16	8.9																						16
17	8.9																						17
18	8.9																						18
19	8.9																						19
20	8.9																						20
22	8.8																						22
24	8.8	8.9																					24
26	8.7	8.9																					26
28	8.6	8.9																					28
30	8.6	8.8																					30
32	8.5	8.7																					32
34	8.3	8.5	8.3																				34
36	8.1	8.3	8.3																				36
38	7.9	8.1	8.2																				38
40	7.7	7.9	8.1	8.9																			40
45	7.2	7.3	7.5	8.9			7.8			8													45
50	6.8	6.9	7	8.8			7.8			7.9			6.9			6.9			6				50
55	6.3	6.4	6.6	8.8	8.8		7.7			7.9			6.9			6.9			6				55
60	5.9	6	6.2	8.7	8.6		7.7	7.8		7.8	7.9		6.9	7		6.9			6				60
65	5.6	5.7	5.8	8.6	8.4	8.1	7.6	7.7		7.8	7.9		6.8	6.9		6.9	6.9		6	6			65
70	5.3	5.3	5.5	8.4	8.1	7.9	7.6	7.5	7.3	7.7	7.7	7.6	6.8	6.9		6.8	6.9		6	6			70
75	5	5	5.1	8.1	7.8	7.6	7.4	7.2	7.1	7.3	7.6	7.4	6.7	6.9	6.8	5.9	6.9	6.9	5.5	6			75
80	4.6	4.8	4.9	7.2	7.6	7.3	6.9	7	6.9	6.2	7.3	7.2	5.8	6.7	6.6	4.8	6.2	6.8	4.4	5.8	6		80
85	4.2	4.5	4.6	6.2	7.2	7.1	5.9	6.7	6.7	5.2	6.4	6.9	4.8	5.9	6.5	3.8	5.1	6.2	3.4	4.7	5.7		85
90	3.8	4.1	4.3	5.2	6.3	6.9	4.9	6	6.5	4.2	5.4	6.3	3.9	5	5.9	2.7	4.2	5.2		3.8	4.8		90
95	3.4	3.7	3.9	4.3	5.4	6.2	4	5.1	6	3.3	4.4	5.4	2.9	4.2	5		3.2	4.3		2.9	3.9		95
100	3.1	3.3	3.5	3.5	4.5	5.3	3.2	4.2	5.1	2.3	3.6	4.5		3.3	4.2		2.2	3.4			3.1		100
105	2.8	3	3	2.7	3.7	4.5	2.3	3.4	4.2		2.7	3.6		2.4	3.4			2.4					105
110	2.6	2.6	3	1.8	2.9	3.7		2.6	3.4		1.8	2.8			2.5								110
115	2.4				2.1	2.9		1.8	2.7			1.9											115
120						2.2			1.9														120

t_205_01519_00_000 / 01549_00_000 / 01579_00_000

STERLING CRANE

Lifting capacities Forces de levage

TVK

ft	42 - 194 ft T			46 ft V			62 ft K			360°			14600 lbs			85%			ft			
	42 ft + 46 ft			156 ft + 46 ft			166 ft + 46 ft			170 ft + 46 ft			180 ft + 46 ft			184 ft + 46 ft				194 ft + 46 ft		
	62 ft			62 ft			62 ft			62 ft			62 ft			62 ft				62 ft		
	0°	20°	40°	0°	20°	40°	0°	20°	40°	0°	20°	40°	0°	20°	40°	0°	20°	40°	0°	20°	40°	
17	6																					17
18	6																					18
19	6																					19
20	6																					20
22	6																					22
24	6																					24
26	6																					26
28	6																					28
30	5.9																					30
32	5.9																					32
34	5.9																					34
36	5.8																					36
38	5.8	6																				38
40	5.8	6																				40
45	5.6	6		6																		45
50	5.5	5.8		6			5.3			5.4												50
55	5.3	5.5	5.4	6			5.3			5.4			4.6			4.7						55
60	5	5.2	5.4	5.9			5.2			5.3			4.6			4.7			4			60
65	4.7	4.9	5.1	5.9			5.2			5.3			4.6			4.7			4			65
70	4.4	4.6	4.8	5.9			5.2			5.3			4.6			4.6			4			70
75	4.2	4.3	4.5	5.8	5.9		5.2	5.3		5.2	5.4		4.6			4.6			4			75
80	4	4.1	4.3	5.8	5.7		5.1	5.2		5.2	5.4		4.6	4.7		4.5	4.7		4			80
85	3.7	3.9	4.1	5.6	5.6		5.1	5.2		5	5.3		4.4	4.7		3.8	4.7		3.4	4.1		85
90	3.5	3.7	3.8	5.2	5.4	5.3	4.7	5.1		4.3	5.2		3.8	4.7		2.9	4.7			4.1		90
95	3.3	3.5	3.6	4.5	5.3	5.1	4.1	4.9	4.8	3.5	5.1	4.9	3	4.7			4.2			3.9		95
100	3.2	3.3	3.4	3.7	5.1	4.9	3.4	4.8	4.7	2.6	4.5	4.8	2.1	4.1	4.5		3.5	4.6		3.1		100
105	3	3.1	3.2	3	4.6	4.8	2.6	4.3	4.5		3.8	4.7		3.4	4.4		2.7	4.2			3.9	105
110	2.8	3	3.1	2.2	4	4.7		3.7	4.4		3.1	4.4		2.8	4.1		1.8	3.5			3.2	110
115	2.5	2.8	2.9		3.3	4.5		3	4.2		2.4	3.8		2	3.5			2.8			2.5	115
120	2.2	2.6	2.8		2.6	3.9		2.3	3.6			3.1			2.8			2.1				120
125	2.2	2.3	2.5		1.9	3.2			2.9		2.4				2.1							125
130	2.2	2.2	2.1			2.6			2.3													130
135	2.2	2.2	1.9			1.8																135
140	2.2	2.2																				140

t_205_01619_00_000 / 01649_00_000 / 01679_00_000