

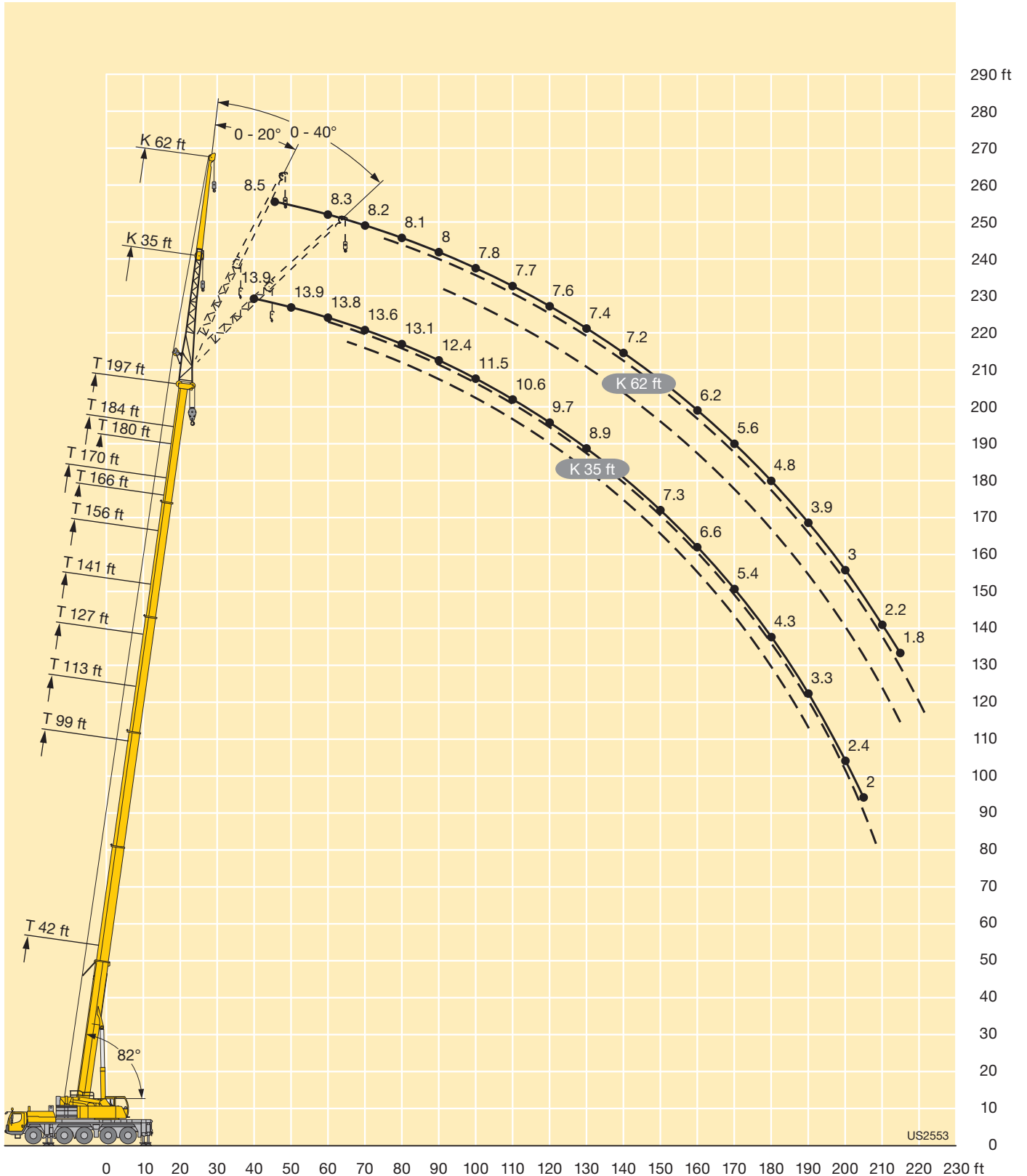


## LIFTING CHARTS - All Terrain Cranes

### LIEBHERR MODEL LTM 1130-5.1 - 155 TON CAPACITY

**Lifting heights**  
**Hauteurs de levage**

**TNZK**



US2553

# STERLING CRANE

## Lifting capacities Forces de levage

**TNZK**

		42 - 197 ft T			35 ft NZK			360°			92600 lbs			85%					
ft	42 ft			99 ft			113 ft			127 ft			141 ft			156 ft			ft
	35 ft			35 ft			35 ft			35 ft			35 ft			35 ft			
	0°	20°	40°	0°	20°	40°	0°	20°	40°	0°	20°	40°	0°	20°	40°	0°	20°	40°	
14	38.7																		14
15	38.7																		15
16	38.7	37.6		38.7															16
17	38.7	37.6		38.7															17
18	38.6	37.4		38.7															18
19	38.3	36.8		38.7			38.7												19
20	37.6	36		38.7			38.7												20
22	36.3	34.5		38.7			38.7			37.2									22
24	34.9	33.1		38.7			38.7			37									24
26	33.5	31.8	25.9	38.7			38.7			36.8			31.8						26
28	32	30.6	25.3	38.7	33		38.7			36.6			31.7						28
30	30.5	29.5	24.6	38.7	32.2		38.7	31.9		36.1			31.6			26.5			30
32	29	28.4	23.9	38.7	31.4		38.7	31.3		35.7			31.3			26.5			32
34	27.6	27.4	23.3	38.7	30.7		38.4	30.7		35.2	29.7		31.1			26.4			34
36	26.1	26.5	22.7	38.6	30	24	37.8	30.1		34.7	29.3		30.7			26.3			36
38	24.6	25.6	22.2	38.3	29.3	23.7	37.1	29.4		34.2	28.7		30.4	27.2		26.1			38
40	23.4	24.5	21.6	37.5	28.7	23.3	36.4	28.9	23.3	33.7	28.2		30.1	26.9		25.9			40
45	20.7	21.4	20	35.6	27.3	22.5	34.8	27.6	22.6	32.6	27.1	22.4	29.3	25.9		25.5	24		45
50	18.6	19.2	18.3	33.6	26	21.8	33.3	26.4	21.9	31.4	26	21.7	28.6	25	21.3	25	23.3		50
55	16.7	18	17.5	31.4	24.8	21.1	31.9	25.3	21.2	30.4	25.1	21.1	27.8	24.2	20.7	24.5	22.7	20	55
60	15.3	17.1	16.9	29.3	23.8	20.5	30.4	24.3	20.7	29.3	24.2	20.6	27	23.4	20.2	24	22.1	19.6	60
65	14	16.4	6.3	27.2	22.9	19.9	28.8	23.4	20.2	28.3	23.3	20.1	26.3	22.8	19.8	23.5	21.6	19.2	65
70				25.1	22	19.5	27.2	22.5	19.7	27.2	22.6	19.7	25.6	22.1	19.4	22.7	21	18.8	70
75				23.3	21.1	19	25.5	21.8	19.3	26.2	21.9	19.3	24.7	21.4	19	21.8	20.5	18.5	75
80				21.7	20.3	18.6	23.8	21.1	18.9	25	21.2	18.9	23.5	20.9	18.7	20.9	20.1	18.2	80
85				20.3	19.5	18.1	22.3	20.4	18.5	23.7	20.6	18.6	22.4	20.3	18.4	20	19.4	18	85
90				19.1	18.8	17.7	21	19.7	18.1	22.3	20	18.3	21.2	19.8	18.1	18.8	18.6	17.7	90
95				18	18.2	17.3	19.9	19	17.8	21.1	19.5	18	20.1	19.3	17.9	17.7	17.7	17.3	95
100				17	17.6	17.1	18.8	18.5	17.4	19.9	18.9	17.7	18.8	18.8	17.6	16.8	16.8	16.9	100
105				16.1	17.1	16.9	17.8	17.9	17.2	18.8	18.4	17.4	17.3	17.9	17.3	15.9	15.9	16.1	105
110				15.3	16.7	13.9	16.9	17.4	16.9	17.6	17.8	17.1	15.9	16.8	16.9	15	15.1	15.3	110
115				14.5	16.4		16.1	16.9	16.8	16.3	16.9	16.7	14.7	15.4	16	14.1	14.3	14.5	115
120				13.9	16.3		15.4	16.1	16.2	15	15.7	16	13.9	14.2	14.7	13	13.5	13.7	120
125				12.5			14.4	14.8		13.8	14.4	14.6	13.2	13.2	13.5	12	12.7	13	125
130							13.5	13.7		12.6	13.1	13.4	12.4	12.6	12.6	11	11.7	12.1	130
135							12.5	12.7		11.6	12		11.4	12	12.1	10.4	10.7	11.2	135
140							8.1			10.6	11		10.4	11	11.2	10	10	10.2	140
145										9.7	10		9.5	10	10.2	9.5	9.6	9.7	145
150										8.8	9.1		8.7	9.1		8.9	9.1	9.2	150
155													8.2	8.3		8.1	8.5	8.7	155
160													7.9	8		7.4	7.7		160
165													7.7	7.8		6.9	7		165
170																6.6	6.7		170
175																6.4	6.4		175
180																6			180

t\_205\_51801\_00\_000

# STERLING CRANE

## Lifting capacities Forces de levage

**TNZK**



ft	166 ft			170 ft			180 ft			184 ft			197 ft			ft
	35 ft			35 ft			35 ft			35 ft			35 ft			
	0°	20°	40°	0°	20°	40°	0°	20°	40°	0°	20°	40°	0°	20°	40°	
32	18.4			19.5												32
34	18.4			19.5												34
36	18.4			19.5			16.3			16.5						36
38	18.4			19.5			16.3			16.5						38
40	18.4			19.5			16.3			16.5			13.9			40
45	18.4			19.5			16.3			16.5			13.9			45
50	18.3	17.9		19.5	19.5		16.3	15.8		16.5			13.9			50
55	18	17.5		19.5	19.5		16.2	15.8		16.5	16.3		13.9	13.6		55
60	17.4	16.8	16.2	19.5	19.5	18.5	16.2	15.8	15.3	16.5	16.3		13.8	13.5		60
65	16.7	16.2	15.6	19.5	19.4	18.3	15.8	15.5	15.1	16.3	16.2	15.5	13.8	13.5	13.1	65
70	16	15.5	15.1	19.3	18.9	18	15.3	15.1	14.7	15.9	15.8	15.4	13.6	13.4	13.1	70
75	15.3	14.9	14.5	18.6	18.2	17.7	14.8	14.5	14.2	15.6	15.3	15	13.4	13.3	13.1	75
80	14.6	14.3	14	17.8	17.4	17.2	14.3	13.9	13.7	15.1	14.8	14.6	13.1	13	13	80
85	13.9	13.6	13.5	16.9	16.6	16.5	13.7	13.4	13.2	14.5	14.2	14.1	12.8	12.6	12.6	85
90	13.3	13	13	16.1	15.8	15.8	13.1	12.9	12.8	13.9	13.7	13.6	12.4	12.2	12.2	90
95	12.6	12.5	12.5	15.4	15.1	15.2	12.5	12.4	12.3	13.3	13.2	13.1	11.9	11.8	11.8	95
100	12	11.9	12	14.7	14.5	14.5	12	11.9	11.8	12.8	12.7	12.7	11.5	11.4	11.4	100
105	11.4	11.4	11.4	14	13.8	13.8	11.4	11.4	11.4	12.2	12.1	12.2	11.1	11	11	105
110	10.8	10.8	10.9	13.3	13.2	13.2	10.9	10.9	11	11.7	11.6	11.7	10.6	10.6	10.6	110
115	10.2	10.3	10.4	12.7	12.6	12.7	10.4	10.5	10.5	11.1	11.1	11.2	10.2	10.2	10.3	115
120	9.7	9.8	10	12	12	12.1	10	10.1	10.1	10.7	10.7	10.8	9.7	9.8	10	120
125	9.2	9.4	9.5	11.4	11.5	11.6	9.6	9.6	9.7	10.3	10.2	10.3	9.3	9.5	9.6	125
130	8.8	8.9	9.1	10.8	10.9	11.1	9.1	9.2	9.4	9.9	9.8	9.9	8.9	9.1	9.3	130
135	8.3	8.5	8.7	10.2	10.4	10.6	8.7	8.9	9	9.5	9.5	9.6	8.5	8.7	8.9	135
140	7.9	8.1	8.3	9.4	9.9	10.1	8.4	8.5	8.6	9.1	9.1	9.2	8.1	8.3	8.5	140
145	7.6	7.7	7.9	8.7	9.2	9.5	8	8.1	8.3	8.6	8.8	8.9	7.7	7.9	8.1	145
150	7.2	7.4	7.5	8.3	8.5	8.8	7.7	7.8	7.9	8.1	8.4	8.6	7.3	7.5	7.7	150
155	6.9	7	7.1	8	8	8.1	7.4	7.5	7.6	7.5	7.9	8.1	6.9	7.2	7.4	155
160	6.6	6.7	6.8	7.7	7.7	7.8	7.1	7.2	7.3	6.9	7.4	7.6	6.6	6.8	7	160
165	6.3	6.4	6.4	7.2	7.4	7.5	6.8	6.9	7	6.3	6.7	7	6	6.4	6.6	165
170	6	6.1		6.7	6.9		6.4	6.6	6.7	5.6	6.1	6.3	5.4	5.9	6.1	170
175	5.7	5.8		6	6.4		6	6.2	6.4	5	5.4	5.6	4.9	5.3	5.6	175
180	5.4	5.5		5.5	5.8		5.5	5.8		4.5	4.8	5	4.3	4.8	4.9	180
185	5.2	5.3		5	5.2		4.9	5.2		3.9	4.3		3.8	4.2	4.4	185
190	4.9			4.5	4.6		4.5	4.7		3.5	3.7		3.3	3.7	3.8	190
195				3.8			4	4.2		3	3.2		2.8	3.2		195
200							3.6	3.7		2.6	2.7		2.4	2.7		200
205							3.1			2.2	2.3		2	2.2		205
210										1.8				1.8		210

t\_205\_51801\_00\_000

# STERLING CRANE

## Lifting capacities Forces de levage

**TNZK**

		42 - 197 ft T			62 ft TNZK			360°			92600 lbs			85%					
ft	42 ft			99 ft			113 ft			127 ft			141 ft			156 ft			ft
	62 ft			62 ft			62 ft			62 ft			62 ft			62 ft			
	0°	20°	40°	0°	20°	40°	0°	20°	40°	0°	20°	40°	0°	20°	40°	0°	20°	40°	
17	16.6																		17
18	16.5																		18
19	16.3																		19
20	16.2																		20
22	15.9			14															22
24	15.5			13.9			13.4												24
26	15.2			13.8			13.3												26
28	14.8			13.7			13.2			12.5									28
30	14.4	11.4		13.6			13.1			12.4			11.9						30
32	14	11.4		13.4			13			12.3			11.8						32
34	13.6	11.3		13.2			12.9			12.2			11.8			11.7			34
36	13.2	11.1		13			12.7			12.1			11.7			11.7			36
38	12.9	10.8		12.8			12.6			12			11.6			11.6			38
40	12.5	10.6		12.7			12.4			11.9			11.5			11.5			40
45	11.7	10		12.3	10.2		12.1			11.6			11.3			11.3			45
50	11	9.7	8.7	11.9	9.9		11.7	9.9		11.3	9.8		11			11.1			50
55	10.3	9.3	8.5	11.5	9.7		11.4	9.7		11	9.6		10.8	9.5		10.9			55
60	9.8	9	8.3	11.1	9.4	8.3	11.1	9.4		10.8	9.4		10.6	9.3		10.7	9.4		60
65	9.3	8.7	8.1	10.7	9.2	8.2	10.8	9.2	8.2	10.5	9.2		10.3	9.1		10.4	9.2		65
70	8.8	8.5	8	10.3	9	8.1	10.4	9	8.1	10.2	9	8.1	10.1	9	8.1	10.2	9.1		70
75	8.2	8.3	7.9	10	8.8	8	10.2	8.9	8	10	8.8	8	9.9	8.8	8	10	8.9	8	75
80	7.6	8.1	7.9	9.7	8.6	7.9	9.9	8.7	8	9.8	8.7	7.9	9.7	8.7	7.9	9.8	8.8	7.9	80
85	7.1	8	7.9	9.5	8.5	7.9	9.6	8.5	7.9	9.6	8.5	7.9	9.5	8.5	7.8	9.6	8.6	7.9	85
90	6.7	7.9	7.9	9.2	8.4	7.8	9.4	8.4	7.8	9.4	8.4	7.8	9.3	8.4	7.8	9.4	8.5	7.8	90
95	6.3	7.9		8.9	8.2	7.8	9.2	8.3	7.8	9.2	8.3	7.8	9.2	8.3	7.7	9.3	8.4	7.8	95
100				8.7	8.1	7.7	8.9	8.2	7.7	9	8.2	7.7	9	8.2	7.7	9.1	8.3	7.7	100
105				8.4	8	7.7	8.7	8.1	7.7	8.8	8.1	7.7	8.8	8.1	7.7	9	8.2	7.7	105
110				8.1	8	7.7	8.4	8	7.7	8.7	8	7.7	8.7	8	7.6	8.8	8.1	7.6	110
115				7.8	7.9	7.7	8.2	7.9	7.7	8.5	8	7.7	8.5	8	7.6	8.7	8	7.6	115
120				7.4	7.8	7.7	7.9	7.9	7.7	8.2	7.9	7.7	8.4	7.9	7.6	8.6	7.9	7.6	120
125				7.2	7.7	7.7	7.6	7.8	7.7	7.9	7.8	7.7	8.2	7.9	7.6	8.5	7.9	7.6	125
130				6.9	7.6	7.7	7.4	7.8	7.7	7.7	7.7	7.7	8	7.8	7.6	8.4	7.8	7.6	130
135				6.7	7.4	7.5	7.1	7.7	7.7	7.5	7.6	7.7	7.8	7.7	7.6	8.2	7.8	7.6	135
140				6.5	7.1		6.9	7.6	7.7	7.3	7.5	7.7	7.6	7.7	7.6	8	7.7	7.6	140
145				6.3	6.8		6.7	7.4	7.6	7.1	7.2	7.4	7.4	7.5	7.6	7.8	7.7	7.6	145
150				6.2	6.7		6.5	7.2		6.8	7	7.2	7.2	7.3	7.5	7.6	7.6	7.6	150
155							6.4	7		6.6	6.7	6.9	7	7.1	7.3	7.4	7.5	7.6	155
160							6.3	6.8		6.4	6.5	6.6	6.8	6.9	7.1	7.2	7.4	7.6	160
165							6.2			6.2	6.3		6.6	6.7	6.8	7	7.3	7.5	165
170										5.9	6		6.4	6.5	6.6	6.9	7.1	7.3	170
175										5.7	5.8		6.2	6.3		6.4	6.9	7	175
180										5.6			6	6.1		6	6.6	6.7	180
185													5.8	6		5.4	6		185
190													5.7	5.8		5.1	5.4		190
195													4.9			4.9	5		195
200																4.7	4.8		200
205																4.6	4.7		205
210																2.7			210

t\_205\_51901\_00\_000

# STERLING CRANE

## Lifting capacities Forces de levage

**TNZK**



ft	166 ft			170 ft			180 ft			184 ft			197 ft			ft
	62 ft			62 ft			62 ft			62 ft			62 ft			
	0°	20°	40°	0°	20°	40°	0°	20°	40°	0°	20°	40°	0°	20°	40°	
36	10.1			10.8												36
38	10.1			10.8												38
40	10.1			10.7			9.4									40
45	9.9			10.6			9.4			9.4			8.5			45
50	9.8			10.5			9.3			9.3			8.5			50
55	9.7			10.3			9.2			9.2			8.4			55
60	9.6			10.1	9.2		9.1			9.2			8.3			60
65	9.4	8.7		9.9	9		9	8.5		9.1	8.5		8.3			65
70	9.3	8.6		9.7	8.9		8.9	8.4		8.9	8.4		8.2			70
75	9.2	8.5		9.6	8.8		8.8	8.3		8.8	8.3		8.2	7.8		75
80	9	8.4	7.8	9.4	8.6	7.8	8.7	8.2		8.7	8.2		8.1	7.8		80
85	8.9	8.3	7.7	9.3	8.5	7.8	8.6	8.1	7.6	8.6	8.1	7.6	8	7.7		85
90	8.8	8.2	7.7	9.1	8.4	7.7	8.5	8.1	7.6	8.5	8.1	7.6	8	7.7	7.4	90
95	8.7	8.1	7.7	9	8.3	7.7	8.4	8	7.6	8.5	8	7.6	7.9	7.6	7.4	95
100	8.6	8	7.6	8.9	8.2	7.7	8.3	7.9	7.5	8.4	7.9	7.5	7.8	7.6	7.4	100
105	8.5	8	7.6	8.8	8.1	7.6	8.2	7.8	7.5	8.3	7.9	7.5	7.8	7.5	7.4	105
110	8.4	7.9	7.6	8.7	8	7.6	8.1	7.8	7.5	8.2	7.8	7.5	7.7	7.5	7.4	110
115	8.3	7.8	7.6	8.5	7.9	7.6	8.1	7.7	7.5	8.1	7.7	7.5	7.7	7.5	7.4	115
120	8.2	7.8	7.6	8.4	7.9	7.6	8	7.7	7.5	8	7.7	7.5	7.6	7.4	7.4	120
125	8	7.7	7.6	8.3	7.8	7.6	7.9	7.6	7.5	8	7.7	7.5	7.5	7.4	7.4	125
130	7.7	7.6	7.6	8.2	7.8	7.6	7.8	7.6	7.5	7.9	7.6	7.5	7.4	7.4	7.4	130
135	7.5	7.5	7.6	8.1	7.7	7.6	7.6	7.5	7.5	7.8	7.6	7.5	7.3	7.3	7.4	135
140	7.2	7.4	7.5	8	7.7	7.6	7.4	7.3	7.5	7.6	7.5	7.5	7.2	7.3	7.4	140
145	7	7.2	7.4	7.9	7.6	7.6	7.2	7.2	7.4	7.4	7.4	7.5	7.1	7.2	7.3	145
150	6.7	7	7.2	7.7	7.6	7.6	6.9	7.1	7.2	7.3	7.3	7.5	6.8	7	7.2	150
155	6.4	6.7	7	7.4	7.6	7.6	6.7	6.9	7.1	7.1	7.2	7.5	6.5	6.8	7	155
160	6.1	6.4	6.7	7.1	7.6	7.6	6.4	6.6	6.9	6.9	7	7.3	6.2	6.6	6.8	160
165	5.9	6.1	6.3	6.6	7.3	7.5	6.2	6.4	6.6	6.5	6.8	7	6	6.3	6.6	165
170	5.6	5.8	6	6.3	6.8	7.3	5.9	6.1	6.4	6.1	6.6	6.8	5.6	6.1	6.3	170
175	5.3	5.6	5.7	6.1	6.3	6.7	5.7	5.9	6.1	5.7	6.2	6.6	5.2	5.8	6.1	175
180	5.1	5.3	5.4	5.9	6	6.2	5.5	5.7	5.9	5.2	5.8	6.2	4.8	5.5	5.8	180
185	4.9	5	5.2	5.6	5.8	6	5.3	5.4	5.6	4.7	5.4	5.8	4.4	5.1	5.5	185
190	4.6	4.8	4.9	5.2	5.6	5.8	5	5.2	5.4	4.2	4.9	5.3	3.9	4.6	5.1	190
195	4.4	4.6		4.7	5.2	5.4	4.6	5	5.1	3.7	4.4	4.7	3.5	4.2	4.6	195
200	4.2	4.3		4.3	4.7		4.2	4.7	4.8	3.3	3.9	4.1	3	3.7	4.1	200
205	4	4.1		3.8	4.2		3.7	4.2		2.8	3.4	3.6	2.6	3.3	3.6	205
210	3.9	3.9		3.4	3.8		3.3	3.8		2.4	2.9		2.2	2.8	3.1	210
215	3.7	3.7		3.1	3.3		3	3.3		2.1	2.5		1.8	2.4	2.5	215
220	2			2.7	2.8		2.6	2.9			2.1			2		220
225							2.3	2.5								225
230							2									230

t\_205\_51901\_00\_000

# STERLING CRANE

## Lifting capacities Forces de levage

**TNZK**

		42 - 197 ft			35 ft			360°			14600 lbs			85%						
ft	ft	42 ft			99 ft			113 ft			127 ft			141 ft			156 ft			ft
		35 ft			35 ft			35 ft			35 ft			35 ft			35 ft			
		0°	20°	40°	0°	20°	40°	0°	20°	40°	0°	20°	40°	0°	20°	40°	0°	20°	40°	
14		38.2																		14
15		37.6																		15
16		36.9			38.7															16
17		36.2	34.2		38.7															17
18		35.5	34		38.7															18
19		34.8	33.5		38.7			38.4												19
20		34.2	32.7		38.7			38.3												20
22		33	31.3		38.7			38			33.8									22
24		31.8	30.1		38.7			37.7			33.6									24
26		30.5	28.9	23.5	38.6			37.2			33.5			28.9						26
28		29.1	27.8	23	38.5	30		36.7			33.2			28.8						28
30		27.7	26.8	22.3	37.9	29.3		36.2	29		32.8			28.7			24.1			30
32		26.4	25.8	21.8	37.2	28.6		35.6	28.5		32.4			28.5			24.1			32
34		25.1	24.9	21.2	36.4	27.9		34.9	27.9		32	27		28.2			24			34
36		23.7	24.1	20.7	35.6	27.3	21.9	34	27.3		31.3	26.6		28			23.9			36
38		22.4	23.3	20.1	34.5	26.7	21.5	32.3	26.8		29.8	26.1		26.8	24.8		23.8			38
40		21.3	22.2	19.7	32.9	26.1	21.2	30.2	26.2	21.2	27.9	25.7		26.2	24.4		23.5			40
45		18.8	19.5	18.2	27.6	24.8	20.4	25.3	25	20.5	23.2	24.6	20.3	22.5	23.2		21.3			45
50		16.9	17.5	16.7	23.5	23.6	19.8	21.4	23.4	19.9	21.6	22	19.7	21.2	21.1	19.3	19.1	20.4		50
55		15.2	16.4	15.9	20.1	21.9	19.2	18.2	20.3	19.3	19.7	18.8	19.2	18.4	18.6	18.6	17.1	17.7	18	55
60		13.9	15.5	15.4	17.3	19.1	18.6	15.5	17.4	18.6	17.1	17.8	17.7	15.9	17.5	17	14.7	16.5	16.7	60
65		12.7	14.9	6.3	15	16.5	17.7	13.3	15	16.4	14.8	16.4	15.7	13.8	15.4	15.6	12.7	14.3	15.3	65
70					13	14.4	15.5	11.3	12.9	14.2	13	14.3	15.2	12	13.4	14.6	10.9	12.4	13.7	70
75					11.3	12.5	13.5	9.7	11.1	12.2	11.3	12.6	13.6	10.4	11.7	12.8	9.4	10.8	12	75
80					9.7	10.8	11.7	8.3	9.5	10.5	9.9	11.1	12	9	10.2	11.2	8	9.3	10.4	80
85					8.3	9.3	10	7	8.1	9	8.7	9.7	10.5	7.8	8.9	9.8	6.9	8	9	85
90					7.1	8	8.5	5.9	6.9	7.7	7.6	8.5	9.2	6.7	7.7	8.5	5.8	6.9	7.8	90
95					6	6.8	7.3	4.9	5.8	6.5	6.6	7.4	8.1	5.8	6.7	7.4	4.8	5.9	6.7	95
100					5.1	5.7	6.1	4	4.8	5.4	5.7	6.4	7	4.9	5.7	6.4	4	4.9	5.7	100
105					4.2	4.8	5.1	3.2	3.9	4.4	4.9	5.5	6	4.1	4.9	5.5	3.2	4.1	4.8	105
110					3.5	3.9	4.1	2.3	3.1	3.4	4.1	4.7	5.1	3.4	4.1	4.6	2.4	3.3	3.9	110
115					2.8	3.2			2.1	2.5	3.4	4	4.3	2.7	3.4	3.9		2.6	3.2	115
120					2.2	2.4					2.7	3.3	3.6	1.9	2.7	3.2			2.4	120
125											2.1	2.6	2.9		2	2.5				125
130												1.9	2.2							130

t\_205\_01819\_00\_000

		42 - 197 ft			35 ft			360°			14600 lbs			85%						
ft	ft	166 ft			170 ft			180 ft			184 ft			197 ft			ft			
		35 ft			35 ft			35 ft			35 ft			35 ft						
		0°	20°	40°	0°	20°	40°	0°	20°	40°	0°	20°	40°	0°	20°	40°				
32		16.8			18.5															32
34		16.8			18.5															34
36		16.8			18.5			14.8			15									36
38		16.8			18.5			14.8			15									38
40		16.8			18.4			14.8			15					12.6				40
45		16.8			18.4			14.8			15					12.6				45
50		16.7	16.2		17.1	18.4		14.8	14.3		15					12.6				50
55		16.3	15.9		15.7	16.8		14.6	14.3		14	14.8				12.4	12.4			55
60		14.3	15.3	14.8	13.4	15.3	15.6	13	14.2	13.9	11.8	13.7				11.1	12.2			60
65		12.3	13.9	14.2	11.4	13.1	14.7	11.1	12.9	13.7	9.8	11.7	13.4			9.4	11.1	11.8		65
70		10.6	12.1	13.4	9.7	11.3	12.7	9.5	11	12.4	8.2	9.9	11.4	7.8	9.5	10.9				70
75		9.1	10.5	11.7	8.2	9.7	10.9	8	9.5	10.7	6.8	8.4	9.7	6.4	8	9.3				75
80		7.8	9.1	10.1	6.9	8.3	9.4	6.7	8.1	9.2	5.6	7	8.2	5.2	6.7	7.9				80
85		6.6	7.8	8.8	5.8	7	8.1	5.6	6.9	7.9	4.4	5.8	6.9	4.1	5.5	6.6				85
90		5.6	6.7	7.6	4.7	5.9	6.9	4.6	5.7	6.7	3.4	4.7	5.8	3	4.4	5.4				90
95		4.6	5.7	6.5	3.8	4.9	5.8	3.6	4.8	5.7	2.2	3.7	4.7	1.8	3.4	4.4				95
100		3.8	4.7	5.5	2.9	4	4.8	2.7	3.9	4.7		2.7	3.7		2.4	3.5				100
105		3	3.9	4.6	2	3.2	3.9	1.8	3	3.8			2.8			2.5				105
110		2.1	3.1	3.8		2.2	3.1		2.1	3										110
115			2.4	3			2.2			2.1										115
120				2.2																120

t\_205\_01819\_00\_000

# STERLING CRANE

## Lifting capacities Forces de levage

**TNZK**

ft	42 - 197 ft			62 ft			360°			14600 lbs			85%			ft				
	42 ft			99 ft			113 ft			127 ft			141 ft				156 ft			
	62 ft			62 ft			62 ft			62 ft			62 ft				62 ft			
	0°	20°	40°	0°	20°	40°	0°	20°	40°	0°	20°	40°	0°	20°	40°	0°	20°	40°		
17	15.1																		17	
18	15																		18	
19	14.8																		19	
20	14.7																		20	
22	14.4				12.7														22	
24	14.1				12.7			12.2											24	
26	13.8				12.6			12.1											26	
28	13.5				12.5			12		11.4									28	
30	13.1	10.4			12.3			12		11.3				10.8					30	
32	12.7	10.4			12.2			11.8		11.2				10.8					32	
34	12.4	10.3			12			11.7		11.1				10.7		10.7			34	
36	12	10.1			11.8			11.6		11				10.6		10.6			36	
38	11.7	9.8			11.7			11.4		10.9				10.5		10.5			38	
40	11.4	9.6			11.5			11.3		10.8				10.5		10.5			40	
45	10.6	9.1			11.2	9.3		11		10.6				10.3		10.3			45	
50	10	8.8	7.9		10.8	9		10.7	9	10.3	8.9			10		10.1			50	
55	9.4	8.5	7.7		10.4	8.8		10.4	8.8	10	8.7			9.8	8.7	9.9			55	
60	8.9	8.2	7.5		10.1	8.6	7.6		10.1	8.6	8.5			9.6	8.5	9.7	8.5		60	
65	8.5	7.9	7.4		9.7	8.4	7.5		9.8	8.4	7.5			9.4	8.3	9.5	8.4		65	
70	8	7.7	7.2		9.4	8.2	7.4		9.5	8.2	7.4			9.2	8.1	7.3	8.2		70	
75	7.4	7.5	7.2		9.1	8	7.3		9.2	8.1	7.3			9	8	7.3	8.7	8.1	7.3	75
80	6.9	7.4	7.1		8.8	7.9	7.2		9	7.9	7.2			8.8	7.9	7.2	8.2	8	7.2	80
85	6.5	7.2	7.1		8.6	7.7	7.1		8.7	7.8	7.2			8.4	7.8	7.1	7.3	7.9	7.2	85
90	6.1	7.2	7.1		8.4	7.6	7.1		8.5	7.7	7.1			7.5	7.7	7.1	6.3	7.6	7.1	90
95	5.7	7.2			8.1	7.5	7.1		8.2	7.5	7.1			6.5	7.5	7	5.4	7.1	7	95
100					7.7	7.4	7		7.5	7.4	7			5.7	7.2	7	4.6	6.3	7	100
105					6.9	7.3	7		6.6	7.3	7			4.9	6.3	7	3.8	5.4	6.7	105
110					6.1	7.1	7		5.8	6.9	7			4.2	5.5	6.6	3.1	4.6	5.9	110
115					5.4	6.3	6.9		5.1	6.1	6.8			3.5	4.8	5.9	2.4	3.9	5.1	115
120					4.7	5.5	6.1		4.4	5.3	6			2.9	4.1	5.1		3.2	4.3	120
125					4.1	4.8	5.3		3.8	4.7	5.3			2.4	3.5	4.4		2.6	3.6	125
130					3.6	4.2	4.5		3.3	4	4.5			2	2.9	3.7		1.8	2.9	130
135					3.1	3.6	3.8		2.8	3.5	3.9				2.3	3.1			2.3	135
140					2.7	3.1			2.3	2.9	3.3					2.5				140
145					2.3	2.5			1.9	2.4	2.7					1.9				145
150					1.9	2			1.9											150

t\_205\_01919\_00\_000

ft	42 - 197 ft			62 ft			360°			14600 lbs			85%			ft	
	166 ft			170 ft			180 ft			184 ft			197 ft				
	62 ft			62 ft			62 ft			62 ft			62 ft				
	0°	20°	40°	0°	20°	40°	0°	20°	40°	0°	20°	40°	0°	20°	40°		
36	9.2				9.9											36	
38	9.2				9.8											38	
40	9.1				9.8			8.6								40	
45	9				9.6			8.5								45	
50	8.9				9.5			8.4							7.7	50	
55	8.8				9.4			8.3							7.6	55	
60	8.7				9.2			8.3							7.6	60	
65	8.6	7.9			9	8.3		8.2							7.5	65	
70	8.4	7.8			8.6	8.1		8.1	7.6						7.4	70	
75	8.3	7.8			8.2	8		7.9	7.5						6.6	75	
80	8	7.7	7.1		7.3	7.9	7.1		7.1	7.5					5.5	80	
85	7	7.6	7		6.3	7.6	7.1		6	7.4	6.9				4.5	85	
90	6	7.4	7		5.2	7.3	7		5	7	6.9				3.6	90	
95	5.1	6.8	6.9		4.3	6.3	7		4.1	6.1	6.9				2.5	95	
100	4.3	6	6.9		3.5	5.4	6.9		3.3	5.2	6.7				4	100	
105	3.5	5.2	6.5		2.7	4.5	6		2.4	4.4	5.8				3.2	105	
110	2.8	4.4	5.7		1.8	3.8	5.1			3.6	5				2.3	110	
115	2	3.7	4.9			3.1	4.3			2.9	4.2					3.1	115
120		3	4.1			2.3	3.6			2.1	3.4					2.4	120
125		2.3	3.4				2.9				2.8						125
130			2.8				2.2				2						130
135			2.1														135

t\_205\_01919\_00\_000