

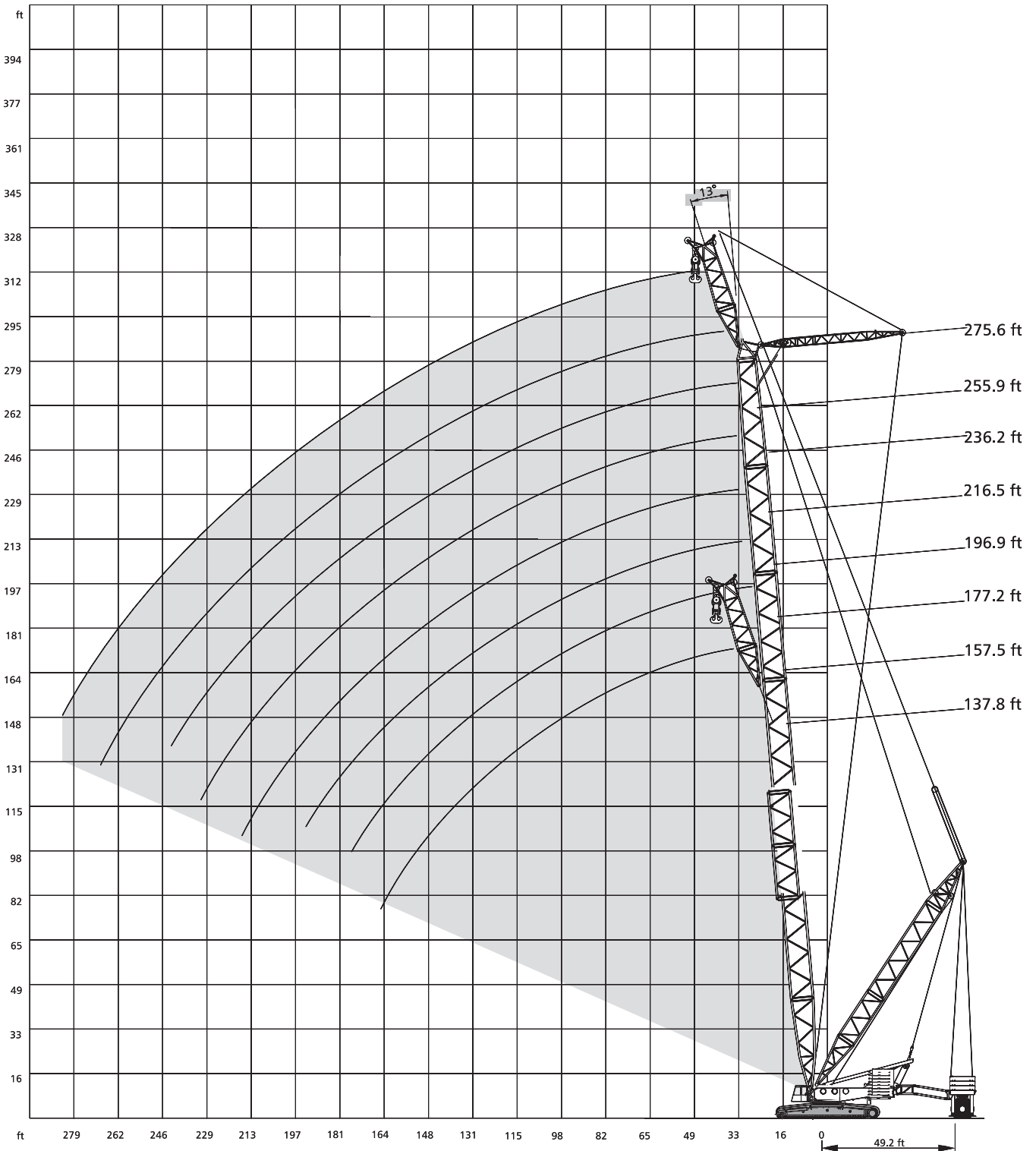


LIFTING CHARTS - Crawler Cranes

DEMAG MODEL CC 2800 - 660 TON CAPACITY

Working ranges fixed fly jib SFVL with SL, 13°

SFVL



Lifting capacities fixed fly jib SFVL with Superlift

353,000 lb  27.6 ft SL-Radius 49.2 ft 360° DIN/ISO

137.8 ft Main boom					
Radius	Fly jib 39.4 ft				
	13°		20°		1,000 lb
	0	716.5	0	716.5	
39	480.6	1058.2	-	-	
46	370.4	1009.7	374.8	965.6	
52	297.6	961.2	302.0	921.5	
59	246.9	868.6	249.1	868.6	
65	207.2	769.4	209.4	782.6	
72	176.4	698.9	178.6	701.1	
79	154.3	630.5	154.3	632.7	
85	134.5	573.2	136.7	575.4	
92	116.8	526.9	119.0	526.9	
SFVL 98	103.6	485.0	105.8	487.2	
111	81.6	416.7	83.8	418.9	
124	63.9	352.7	66.1	359.4	
138	50.7	302.0	50.7	306.4	
151	39.7	253.5	39.7	255.7	
164	30.9	207.2	-	-	
177	-	-	-	-	
190	-	-	-	-	
203	-	-	-	-	
216	-	-	-	-	
230	-	-	-	-	
243	-	-	-	-	

177.2 ft Main boom					
Radius	Fly jib 39.4 ft				
	13°		20°		1,000 lb
	0	716.5	0	716.5	
39	-	-	-	-	
46	366.0	853.2	372.6	813.5	
52	293.2	848.8	297.6	813.5	
59	240.3	844.4	244.7	806.9	
65	200.6	771.6	205.0	773.8	
72	172.0	690.0	174.2	692.3	
79	147.7	621.7	149.9	623.9	
85	127.9	566.6	130.1	568.8	
92	110.2	518.1	112.4	520.3	
SFVL 98	97.0	476.2	99.2	478.4	
111	75.0	407.9	75.0	410.1	
124	57.3	354.9	57.3	357.1	
138	41.9	310.9	44.1	313.1	
151	30.9	275.6	33.1	275.6	
164	22.0	244.7	22.0	242.5	
177	15.4	211.6	15.4	213.8	
190	-	178.6	-	180.8	
203	-	-	-	-	
216	-	-	-	-	
230	-	-	-	-	
243	-	-	-	-	

157.5 ft Main boom					
Radius	Fly jib 39.4 ft				
	13°		20°		1,000 lb
	0	716.5	0	716.5	
39	478.4	948.0	-	-	
46	368.2	943.6	372.6	908.3	
52	295.4	919.3	299.8	884.1	
59	242.5	877.4	246.9	859.8	
65	205.0	776.0	207.2	778.2	
72	174.2	694.5	176.4	696.7	
79	149.9	626.1	152.1	628.3	
85	130.1	568.8	132.3	571.0	
92	114.6	522.5	116.8	522.5	
SFVL 98	101.4	480.6	101.4	482.8	
111	77.2	412.3	79.4	414.5	
124	59.5	359.4	61.7	359.4	
138	46.3	315.3	46.3	310.9	
151	35.3	273.4	35.3	266.8	
164	26.5	231.5	26.5	233.7	
177	19.8	194.0	-	-	
190	-	-	-	-	
203	-	-	-	-	
216	-	-	-	-	
230	-	-	-	-	
243	-	-	-	-	

196.9 ft Main boom					
Radius	Fly jib 39.4 ft				
	13°		20°		1,000 lb
	0	716.5	0	716.5	
39	-	-	-	-	
46	363.8	771.6	-	-	
52	291.0	767.2	295.4	736.3	
59	238.1	762.8	242.5	725.3	
65	198.4	751.8	202.8	714.3	
72	167.6	685.6	172.0	683.4	
79	143.3	617.3	145.5	619.5	
85	123.5	560.0	125.7	564.4	
92	108.0	513.7	110.2	515.9	
SFVL 98	92.6	471.8	94.8	474.0	
111	70.5	403.4	70.5	405.7	
124	50.7	350.5	52.9	352.7	
138	37.5	306.4	39.7	308.6	
151	26.5	271.2	26.5	271.2	
164	17.6	242.5	17.6	242.5	
177	-	213.8	11.0	218.3	
190	-	187.4	-	191.8	
203	-	163.1	-	163.1	
216	-	136.7	-	-	
230	-	-	-	-	
243	-	-	-	-	

Remarks

Superlift mast 98.4 ft

Lifting capacities fixed fly jib SFVL with Superlift

353,000 lb  27.6 ft  SL-Radius 49.2 ft  360°  DIN/ISO

216.5 ft Main boom

Radius	Fly jib 39.4 ft				
	13°		20°		
	0	716.5	0	716.5	
ft	1,000 lb				
39	-	-	-	-	
46	361.6	654.8	-	-	
52	288.8	650.4	293.2	626.1	
59	235.9	646.0	240.3	621.7	
65	196.2	641.5	200.6	617.3	
72	165.3	621.7	169.8	610.7	
79	141.1	595.2	143.3	588.6	
85	121.3	557.8	123.5	560.0	
92	105.8	509.3	108.0	511.5	
SFVL	98	90.4	467.4	92.6	469.6
	111	66.1	401.2	68.3	401.2
	124	48.5	348.3	50.7	348.3
	138	35.3	304.2	35.3	306.4
	151	22.0	269.0	24.3	269.0
	164	13.2	238.1	15.4	240.3
	177	-	213.8	-	213.8
	190	-	191.8	-	194.0
	203	-	169.8	-	172.0
	216	-	147.7	-	147.7
	230	-	125.7	-	-
	243	-	-	-	-
	256	-	-	-	-
	269	-	-	-	-

255.9 ft Main boom

Radius	Fly jib 39.4 ft				
	13°		20°		
	0	716.5	0	716.5	
ft	1,000 lb				
52	284.4	482.8	-	-	
59	231.5	478.4	235.9	465.2	
65	191.8	474.0	194.0	460.8	
72	160.9	469.6	163.1	456.4	
79	134.5	465.2	138.9	451.9	
85	114.6	458.6	119.0	447.5	
92	97.0	451.9	101.4	440.9	
98	83.8	445.3	86.0	434.3	
111	59.5	392.4	61.7	394.6	
SFVL	124	39.7	339.5	41.9	341.7
	138	26.5	295.4	28.7	297.6
	151	15.4	260.1	15.4	262.4
	164	-	231.5	-	231.5
	177	-	207.2	-	207.2
	190	-	185.2	-	185.2
	203	-	167.6	-	167.6
	216	-	149.9	-	152.1
	230	-	132.3	-	134.5
	243	-	114.6	-	116.8
	256	-	99.2	-	99.2
	269	-	83.8	-	-
	282	-	-	-	-
	295	-	-	-	-

236.2 ft Main boom

ft	1,000 lb				
39	-	-	-	-	
46	-	-	-	-	
52	286.6	571.0	291.0	555.6	
59	233.7	568.8	238.1	551.2	
65	194.0	566.6	196.2	549.0	
72	163.1	560.0	165.3	544.5	
79	138.9	542.3	141.1	533.5	
85	119.0	526.9	121.3	518.1	
92	101.4	504.9	103.6	504.9	
SFVL	98	86.0	463.0	88.2	465.2
	111	61.7	394.6	63.9	396.8
	124	44.1	341.7	46.3	343.9
	138	28.7	299.8	30.9	302.0
	151	17.6	264.6	19.8	264.6
	164	-	233.7	-	235.9
	177	-	209.4	-	209.4
	190	-	189.6	-	189.6
	203	-	169.8	-	172.0
	216	-	149.9	-	152.1
	230	-	130.1	-	132.3
	243	-	110.2	-	-
	256	-	-	-	-
	269	-	-	-	-

275.6 ft Main boom

ft	1,000 lb				
52	282.2	427.7	-	-	
59	227.1	423.3	233.7	412.3	
65	187.4	418.9	191.8	407.9	
72	156.5	416.7	160.9	403.4	
79	132.3	410.1	136.7	401.2	
85	112.4	403.4	114.6	394.6	
92	94.8	394.6	97.0	388.0	
98	79.4	388.0	81.6	379.2	
111	55.1	363.8	57.3	361.6	
SFVL	124	35.3	328.5	37.5	328.5
	138	22.0	291.0	24.3	293.2
	151	11.0	255.7	11.0	257.9
	164	-	227.1	-	229.3
	177	-	202.8	-	202.8
	190	-	180.8	-	183.0
	203	-	163.1	-	163.1
	216	-	147.7	-	147.7
	230	-	130.1	-	130.1
	243	-	114.6	-	114.6
	256	-	99.2	-	99.2
	269	-	86.0	-	86.0
	282	-	70.5	-	-
	295	-	-	-	-

Remarks

Superlift mast 98.4 ft