

# STERLING CRANE



## TRANSPORTATION SPECS - Crawler Cranes

### LINK-BELT MODEL 238H5 - 150 TON CAPACITY

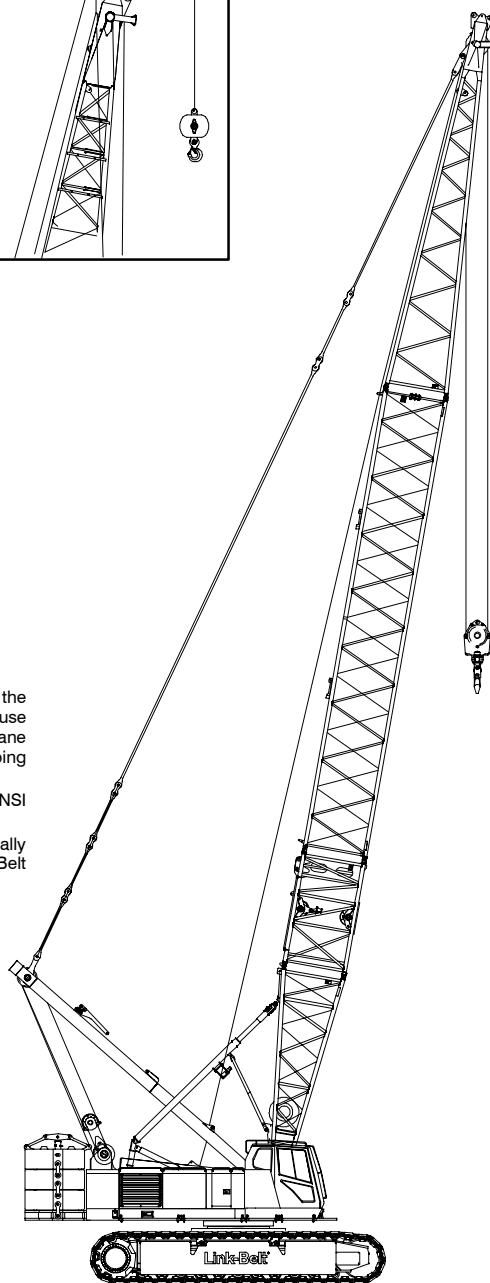
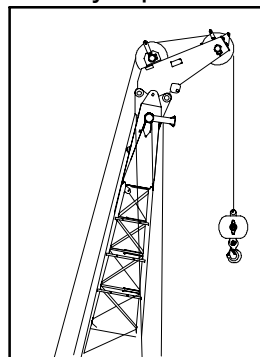
| <u>COMPONENT WEIGHTS</u>  | <u>LBS.</u> | <u>KGS.</u> | <u>Boom 70" (1.78m) x 62" (1.57m) Min 50' to Max 260'</u> |             |             |
|---|-------------|-------------|---|-------------|-------------|
|   |             |             |   | <u>LBS.</u> | <u>KGS.</u> |
| Complete Crane c/w 50' boom<br>(incl. block & max cwt)                    | 287,717     | 130 508     | OD (tubular) 76" x 72"                                    |             |             |
|   |             |             | 20' Butt Section  | 3,350       | 1 520       |
| House, Carbody, Butt, Gantry & 10' Self Assembly<br>- 50' x 11'5" x 11'3" | 71,097      | 32 249      | 10' Self Assembly Section                                 | 2, 717      | 1 232       |
| Counterweights - Upper  |             |             | 10' Insert c/w pendants - 1 pc.                           | 1,056       | 479         |
| 1 Slab - 15'2" x 5'10" x 33"  | 14,000      | 6 350       | 20' Insert c/w pendants - 2 pc. ea                        | 1,778       | 806         |
| 6 Wing - 5'1" x 4'4" x 21"      13,000 lb. each                           | 78,000      | 35 381      | 30' Insert c/w pendants - 1 pc.                           | 2,482       | 1 126       |
| Counterweights - Lower  |             |             | 40' Insert c/w pendants - 3 pc.                           | 3,177       | 1 441       |
| 2 Side Frame - 16'8" x 18" x 34"      24,000 lb. each                     | 48,000      | 21 773      | 30' Tip Section   | 4,148       | 1 882       |
| Total Counterweight   | 140,000     | 63 504      | 5' Auxiliary Tip Extension                                | 671         | 304         |
| Tracks - 44" shoes - 25'1" x 3'8" x 4'5" each                             | 34,649      | 15 717      |   |             |             |
| <u>ADDITIONAL INFORMATION</u>   |             |             |   |             |             |
| 125 Ton 6 Sheave Block 6" x 2' x 2'2"                                     | 2,580       | 1 170       |   |             |             |
| 15 Ton Ball 41" x 18"   | 767         | 348         |   |             |             |
| Third Drum without rope   | 2,000       | 907         |   |             |             |
|   |             |             | <u>JIB/LUFFING JIB MIN 30' TO MAX 75'</u>                 |             |             |
|   |             |             | OD 34.5" X 26.5"  |             |             |
|   |             |             | 15' Butt Section c/w mast                                 | 1,106       | 502         |
|   |             |             | 15' Insert c/w pendants 3 pc. ea                          | 330         | 150         |
|   |             |             | 15' Tip Section   | 604         | 274         |

## Main Boom Make-up

| Boom Length<br>ft (m) | Boom Extensions ft (m) |              |              |              |               |
|-----------------------|------------------------|--------------|--------------|--------------|---------------|
|                       | Self Assy<br>Section*  | 10<br>(3.05) | 20<br>(6.14) | 30<br>(9.10) | 40<br>(12.19) |
| 60 (18.29)            | 1                      | 1            |              |              |               |
| 70 (21.34)            | 1                      | 2            |              |              |               |
| 80 (24.38)            | 1                      | 1            | 1            |              |               |
| 90 (27.43)            | 1                      | 1            |              | 1            |               |
| 100 (30.48)           | 1                      | 1            |              |              | 1             |
| 110 (33.53)           | 1                      | 2            |              |              | 1             |
| 120 (36.58)           | 1                      | 1            | 1            |              | 1             |
| 130 (39.62)           | 1                      | 1            |              | 1            | 1             |
| 140 (42.67)           | 1                      | 1            |              |              | 2             |
| 150 (45.72)           | 1                      | 2            |              |              | 2             |
| 160 (48.77)           | 1                      | 1            | 1            |              | 2             |
| 170 (51.82)           | 1                      | 1            |              | 1            | 2             |
| 180 (54.86)           | 1                      | 1            |              |              | 3             |
| 190 (57.91)           | 1                      | 2            |              |              | 3             |
| 200 (60.96)           | 1                      | 1            | 1            |              | 3             |
| 210 (64.01)           | 1                      | 1            |              | 1            | 3             |
| 220 (67.06)           | 1                      | 2            |              | 1            | 3             |
| 230 (70.10)           | 1                      | 1            | 1            | 1            | 3             |
| 240 (73.15)           | 1                      | 2            | 1            | 1            | 3             |
| 250 (76.20)           | 1                      | 1            | 2            | 1            | 3             |
| 260 (79.25)           | 1                      | 2            | 2            | 1            | 3             |

\* 10 ft (3.05m) self assembly section.

Optional 5 ft (1.5m)  
Auxiliary Tip Extension



### Notes:

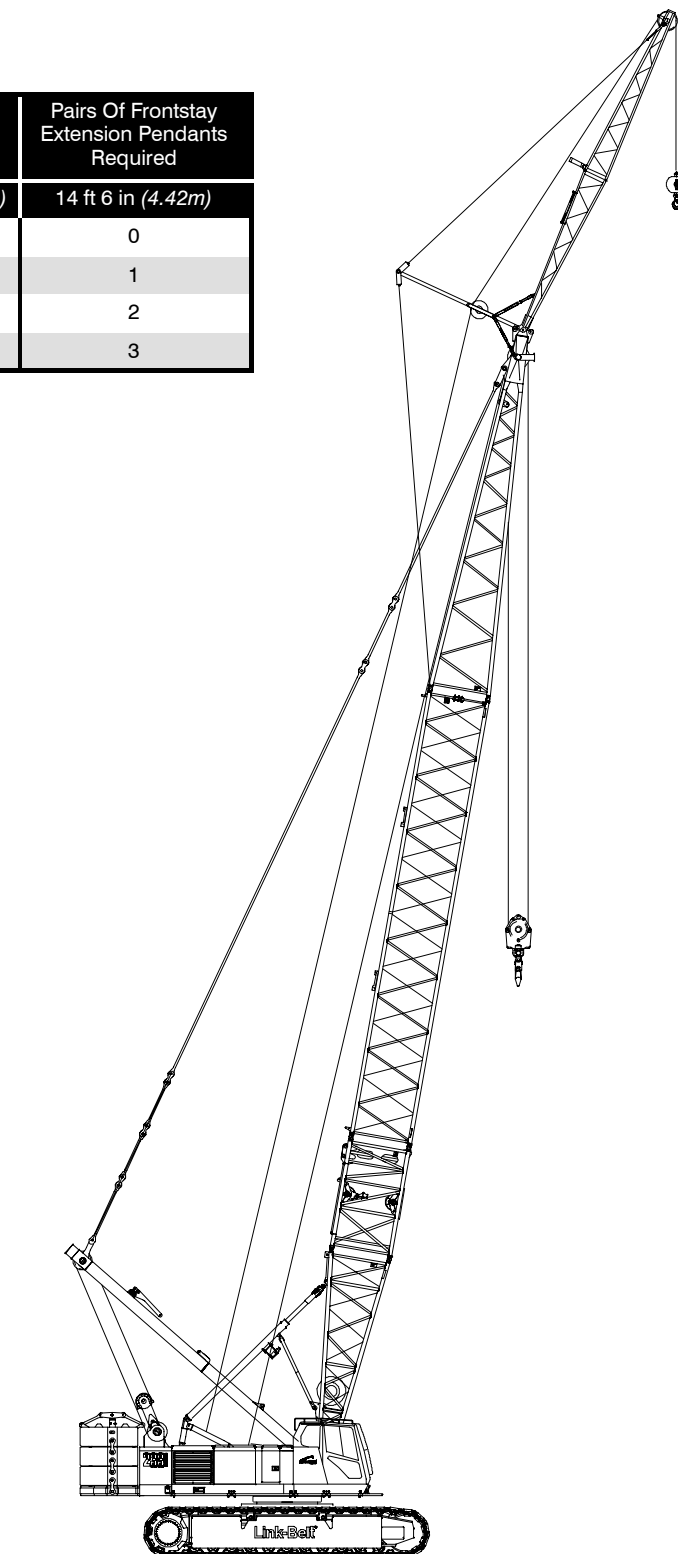
- Capacities shown are in kips/metric tons (1 kip = 1,000 lb / 1 metric ton = 0.45 kips) and are not more than 75% of the tipping loads with the crane standing level on firm supporting surface. A deduction must be made from these capacities for weight of hook block, hook ball, sling, grapple, load weighing device, etc. When using main hook while jib or tip extension is attached, reduce capacities by values shown in Crane Rating Manual. See Operator's Manual for all limitations when raising or lowering attachment.
- The capacities in the shaded areas are based on structural strength. The capacities in the non-shaded areas are based on stability ratings.
- For recommended reeving, parts of line, wire rope type, and wire rope inspection, see Wire Rope Capacity Chart, Operator's Manual, and Parts Manual.
- Load ratings are based on freely suspended loads and make no allowances for such factors as the effect of the wind, ground conditions, and operating speeds. The operator shall therefore reduce load ratings in order to take these conditions into account. Refer to the Crane Rating Manual for Wind Speed Restrictions.
- The 26 ft (7.92m) live mast must be used for all capacities listed.
- The least stable rated condition is over the side.
- Booms must be erected and lowered over the end for maximum stability.
- Main boom length must not exceed 260 ft (79.25m).
- Do not operate at radii and boom lengths where the Crane Rating Manual lists no capacity. Do not use longer booms or jibs than those listed in the Crane Rating Manual. Any of the above can cause a tipping condition, or boom and jib failure.
- These capacities are in compliance with ASME/ANSI B30.5 at date of manufacture.
- These capacities apply only to the crane as originally manufactured and normally equipped by Link-Belt Construction Equipment Company.

## Jib Attachment Make-up

| Jib Length<br>ft (m) | Jib Extensions | Basic Frontstay<br>Pendants<br>Required | Pairs Of Frontstay<br>Extension Pendants<br>Required |
|----------------------|----------------|---|--|
|                      | 15 ft (4.57 m) | 63 ft 5 in (19.33m)                     | 14 ft 6 in (4.42m)                                   |
| 30 (9.15)            | 0              | 1                                       | 0  |
| 45 (13.72)           | 1              | 1                                       | 1  |
| 60 (18.29)           | 2              | 1                                       | 2  |
| 75 (22.86)           | 3              | 1                                       | 3  |

### Notes:

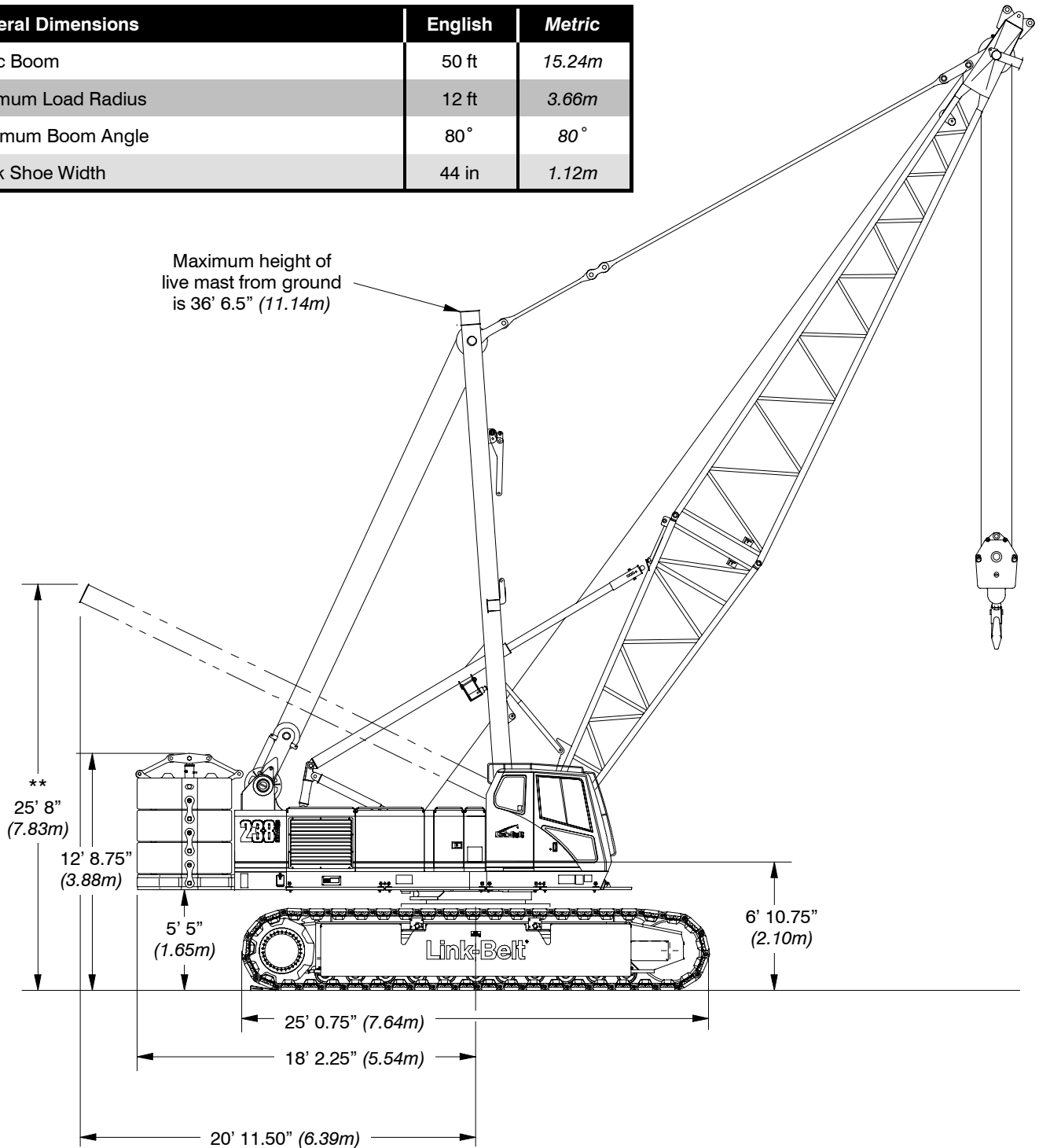
1. Capacities shown are in kips/metric tons (1 kip = 1,000 lb / 1 metric ton = 0.45 kips) and are not more than 75% of the tipping loads with the crane standing level on a firm supporting surface.
2. A deduction must be made from these capacities for the weight of the main boom hook block or hook ball, jib hook block or hook ball, slings, grapples, load weighing devices, etc. When using main hook while jib is attached, reduce capacities by values shown in Crane Rating Manual. See Operator's Manual for all limitations when raising or lowering attachment.
3. The capacities in the shaded areas are based on structural strength. The capacities in the non-shaded areas are based on stability ratings.
4. Load ratings are based on freely suspended loads and make no allowances for such factors as the effect of the wind, ground conditions, and operating speeds. The operator shall therefore reduce load ratings in order to take these conditions into account. Refer to the Crane Rating Manual for Wind Speed Restrictions.
5. These capacities are for "ABC+A" counterweight.
6. These capacities are for 360° working areas.
7. These capacities are for 30–75 ft (9.15–22.86m) jib lengths only.
8. The jib cannot be used on boom lengths over 230 ft (70.10m).
9. The least stable rated condition is over the side.
10. These capacities are in compliance with ASME/ANSI B30.5 at date of manufacture.
11. These capacities apply only to the crane as originally manufactured and normally equipped by Link-Belt Construction Equipment Company.



# STERLING CRANE

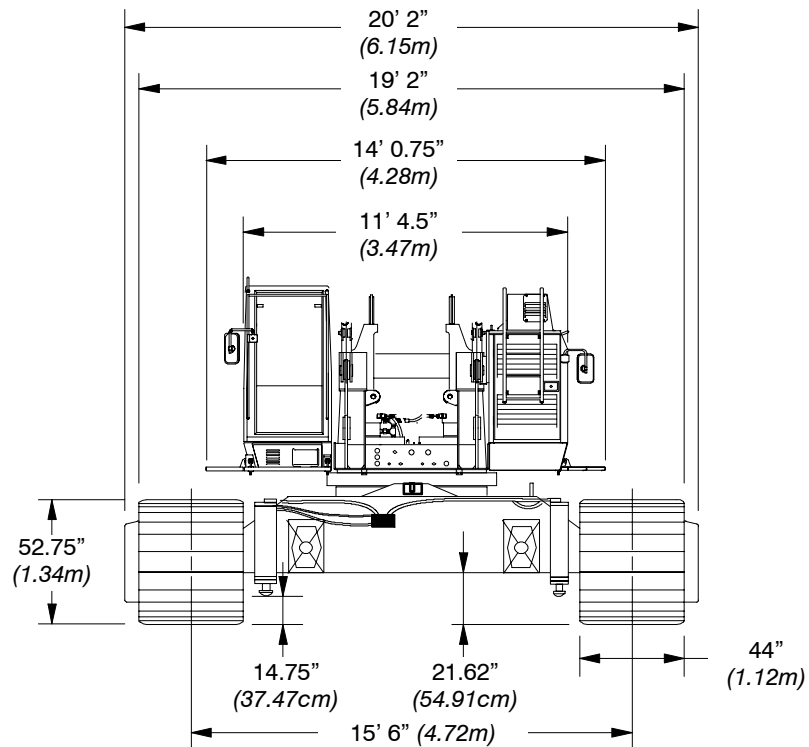
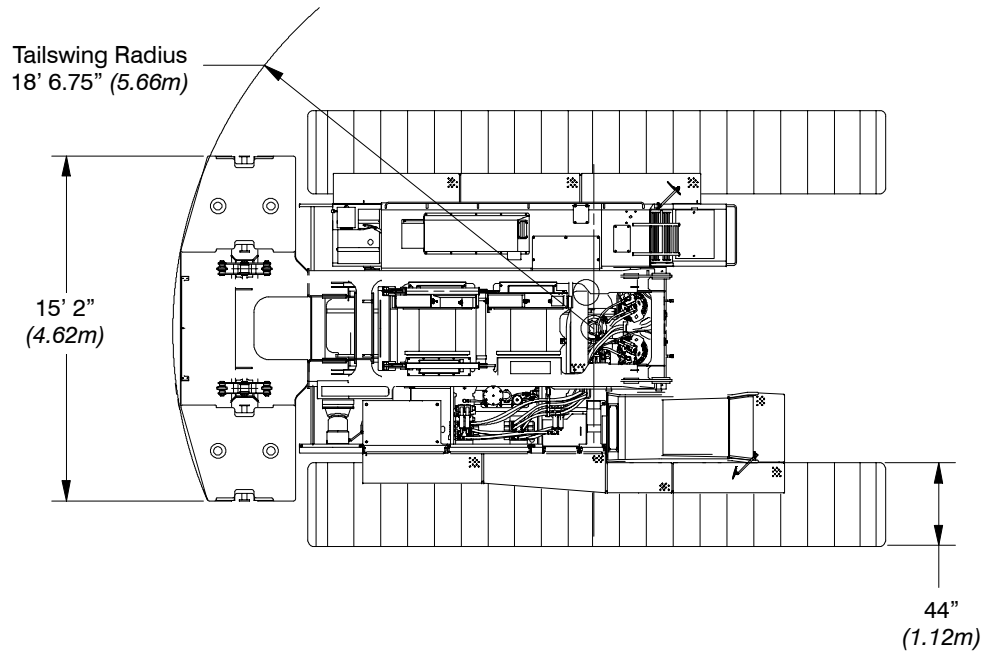
## Dimensions

| General Dimensions  | English | Metric |
|---------------------|---------|--------|
| Basic Boom          | 50 ft   | 15.24m |
| Minimum Load Radius | 12 ft   | 3.66m  |
| Maximum Boom Angle  | 80°     | 80°    |
| Track Shoe Width    | 44 in   | 1.12m  |



Note: \*\* @ Maximum boom angle (80°) with maximum boom [260 ft (79.25m)], maximum rotation radius occurs.

# STERLING CRANE



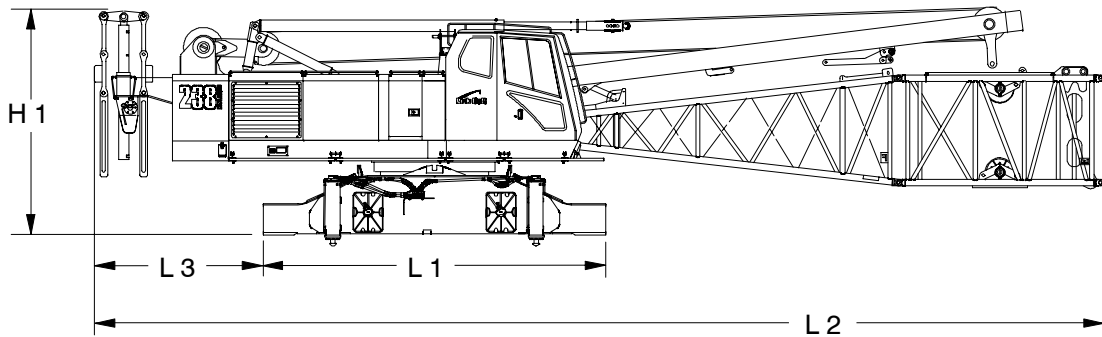
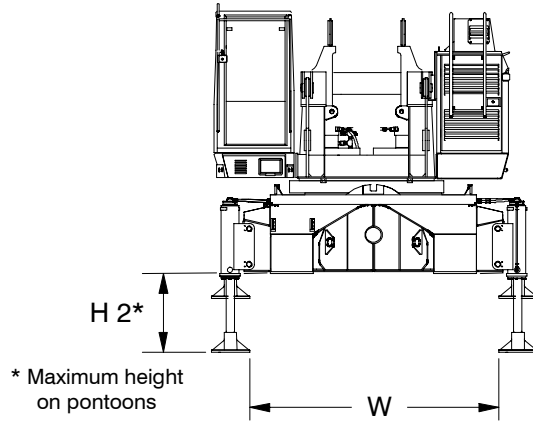
Ground clearance from jacks – 14.75 in (37.47cm)  
Ground clearance from frame – 21.62 in (54.91cm)

# STERLING CRANE

## Base Crane

### Base Crane ①

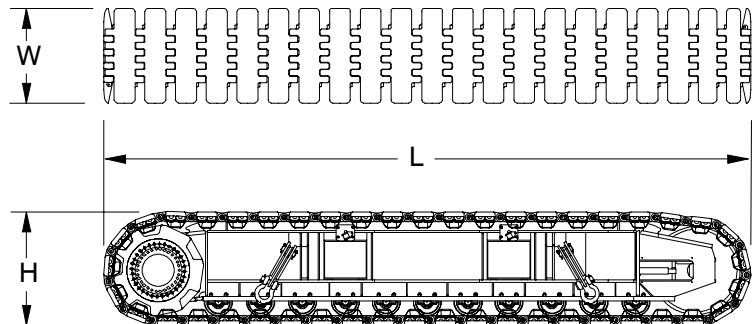
|          |                |            |
|----------|----------------|------------|
| Length 1 | 16 ft 11.50 in | (5.17m)    |
| Length 2 | 49 ft 11.25 in | (15.22m)   |
| Length 3 | 8 ft 4 in      | (2.54m)    |
| Width    | 9 ft 1.50 in   | (2.78m)    |
| Height 1 | 11 ft 3 in     | (3.43m)    |
| Height 2 | 37.50 in       | (0.95m)    |
| Weight   | 71,097 lb      | (32 250kg) |



## Side Frames

### Side Frames ②

|        |               |            |
|--------|---------------|------------|
| Length | 25 ft 0.75 in | (7.64m)    |
| Width  | 44 in         | (1.12m)    |
| Height | 52.75 in      | (1.34m)    |
| Weight | 34,649 lb     | (15 717kg) |



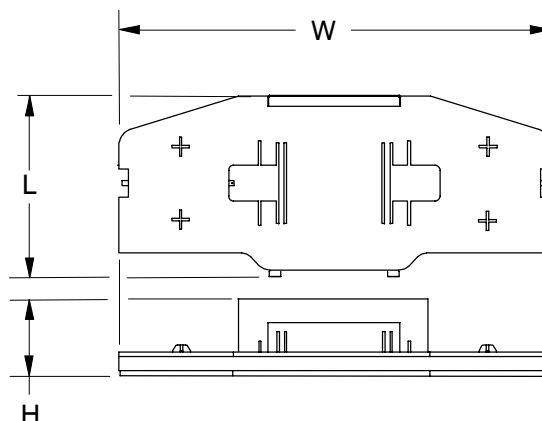
Number inside black circle “①” = # of components

# STERLING CRANE

## Upper Counterweights

### "A" Slab Counterweight ①

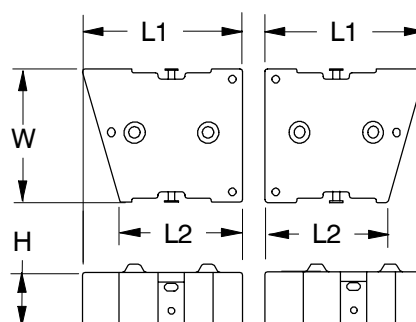
|        |              |           |
|--------|--------------|-----------|
| Length | 5 ft 9.50 in | (1.77m)   |
| Width  | 15 ft 2 in   | (4.62m)   |
| Height | 32.25 in     | (0.82m)   |
| Weight | 14,000 lb    | (6 350kg) |



### "A", "B", and "C"

### Wing Counterweights ⑥

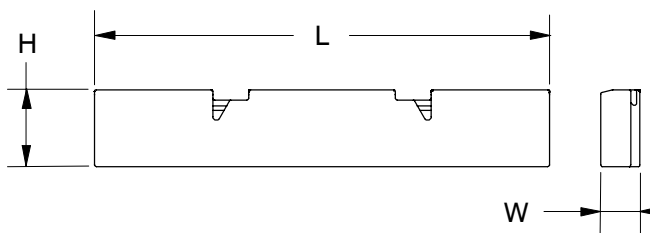
|          |           |           |
|----------|-----------|-----------|
| Length 1 | 61 in     | (1.55m)   |
| Length 2 | 46.50 in  | (1.18m)   |
| Width    | 50.75 in  | (1.29m)   |
| Height   | 20.25 in  | (51.44cm) |
| Weight   | 13,000 lb | (5 897kg) |



## Lower Counterweights

### Side Frame Counterweights ②

|        |            |            |
|--------|------------|------------|
| Length | 16 ft 8 in | (5.08m)    |
| Width  | 17.50 in   | (44.45cm)  |
| Height | 33.75 in   | (0.86m)    |
| Weight | 24,000 lb  | (10 886kg) |



Number inside black circle "①" = # of components

## Boom/Luffing Boom

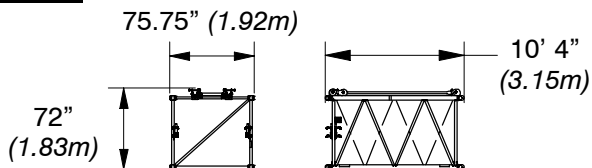
**70 in (1.78m) x 62 in (1.57m)**

### Boom/Luffing Boom Extensions

*Weights Include Pendants and Hardware*

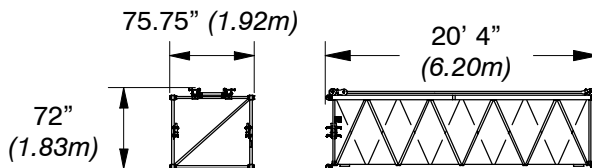
**10 ft (3.05m) Extension**

Weight: 1,056 lb (479kg)



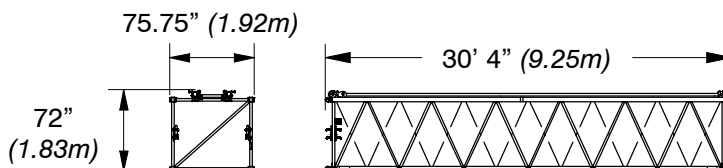
**20 ft (6.10m) Extension**

Weight: 1,778 lb (807kg)



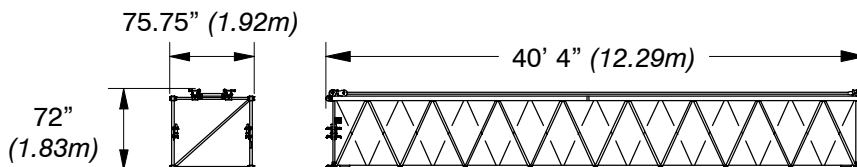
**30 ft (9.14m) Extension**

Weight: 2,482 lb (1 126kg)



**40 ft (12.19m) Extension**

Weight: 3,177 lb (1 441kg)

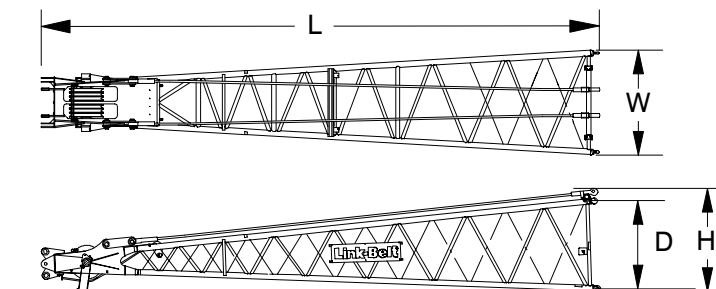




# STERLING CRANE

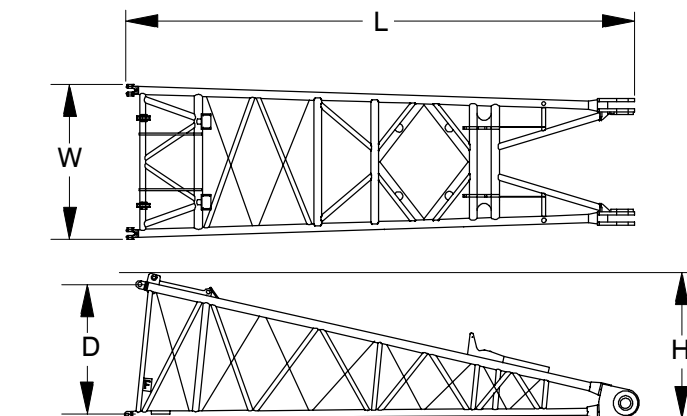
## 30 ft (9.14m) Boom Top Section ①

|        |             |           |
|--------|-------------|-----------|
| Length | 32 ft 10 in | (10.01m)  |
| Width  | 75.75 in    | (1.92m)   |
| Deep   | 62 in       | (1.57m)   |
| Height | 75 in       | (1.91m)   |
| Weight | 4,148 lb    | (1 882kg) |



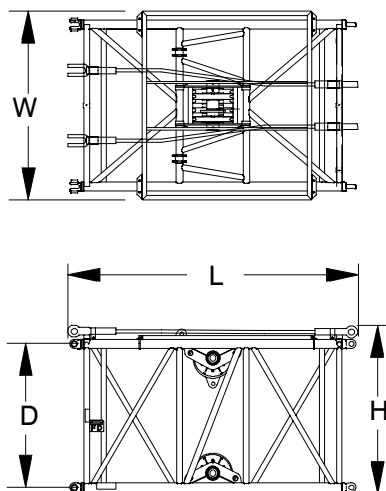
## 20 ft (6.10m) Boom Base Section ①

|        |            |           |
|--------|------------|-----------|
| Length | 20 ft 8 in | (6.30m)   |
| Width  | 75.75 in   | (1.92m)   |
| Deep   | 62 in      | (1.57m)   |
| Height | 69 in      | (1.75m)   |
| Weight | 3,350 lb   | (1 520kg) |



## 10 ft (3.05m) Self Assembly Section\* ①

|        |            |         |
|--------|------------|---------|
| Length | 10 ft 4 in | (3.15m) |
| Width  | 81.50      | (2.07m) |
| Deep   | 70.00      | (1.78m) |
| Height | 73.25      | (1.86m) |
| Weight | 2,717 lb   | (828kg) |



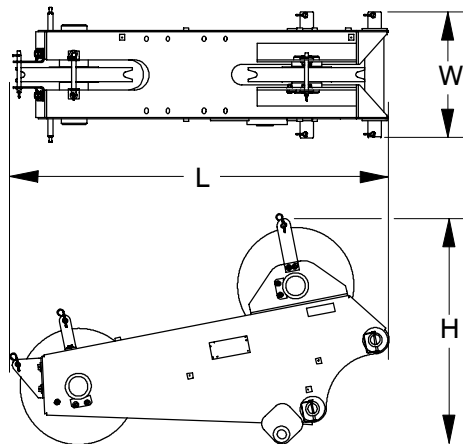
Number inside black circle “①” = # of components

\* – Optional equipment

# STERLING CRANE

## 5 ft (1.52m) Auxiliary Tip Extension\* ①

|        |          |         |
|--------|----------|---------|
| Length | 70.35 in | (1.79m) |
| Width  | 24.50 in | (0.62m) |
| Height | 42.91 in | (1.09m) |
| Weight | 671 lb   | (304kg) |

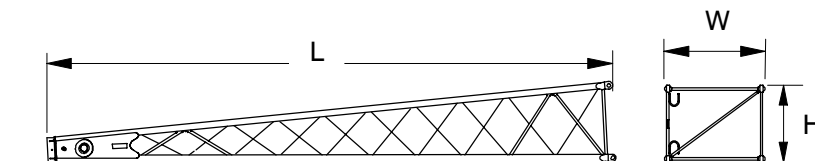


## Jib/Luffing Jib

### 15 ft (4.57m) Jib Top Section\* ①

|         |               |         |
|---------|---------------|---------|
| Length  | 16 ft 1.50 in | (4.91m) |
| Width   | 34.50 in      | (0.88m) |
| Height  | 26.50 in      | (0.67m) |
| Weight† | 604 lb        | (274kg) |

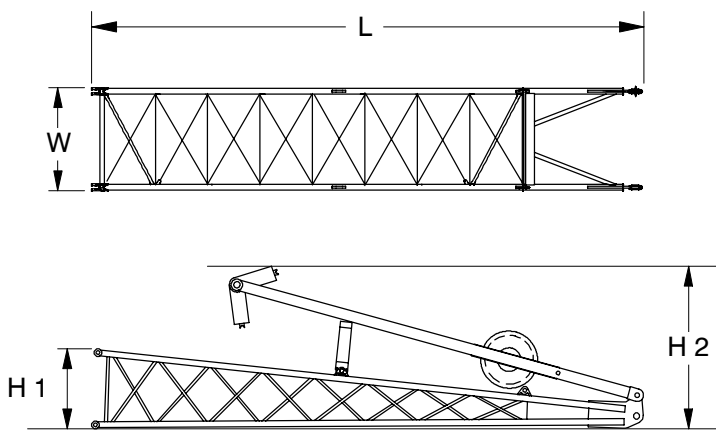
† Weight includes pendants and hardware.



### 15 ft (4.57m) Jib Base Section\* ①

|          |               |         |
|----------|---------------|---------|
| Length   | 15 ft 3.50 in | (4.66m) |
| Width    | 34.50 in      | (0.88m) |
| Height 1 | 26.50 in      | (0.67m) |
| Height 2 | 54.50 in      | (1.38m) |
| Weight†  | 1,106 lb      | (502kg) |

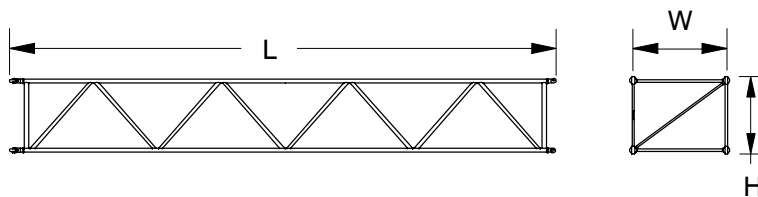
† Weight includes pins, basic frontstay & backstay pendants, and hardware.



### 15 ft (4.57m) Jib Extension\* ①

|         |               |         |
|---------|---------------|---------|
| Length  | 15 ft 2.50 in | (4.64m) |
| Width   | 34.50 in      | (0.88m) |
| Height  | 26.50 in      | (0.67m) |
| Weight† | 330 lb        | (150kg) |

† Weights includes pins, pendants, and hardware.



Number inside black circle "①" = # of components

\* - Optional equipment

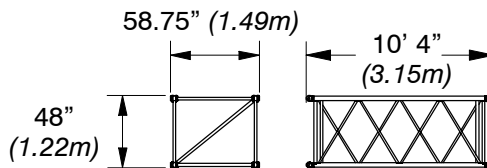
# STERLING CRANE

## Luffing Jib Extensions\*

Weights Include Pendants and Hardware

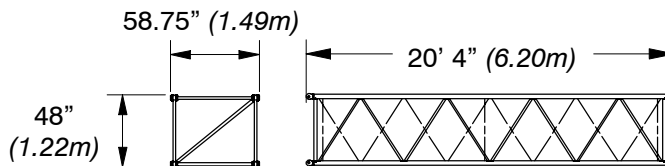
### 10 ft (3.05m) Extension

Weight: 550 lb (249kg)



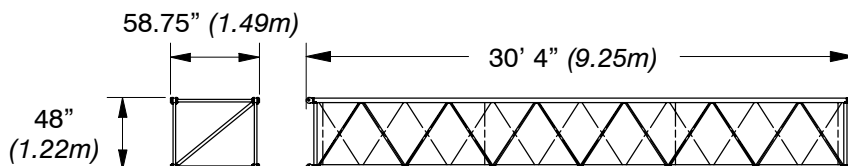
### 20 ft (6.10m) Extension

Weight: 1,100 lb (499kg)



### 30 ft (9.14m) Extension

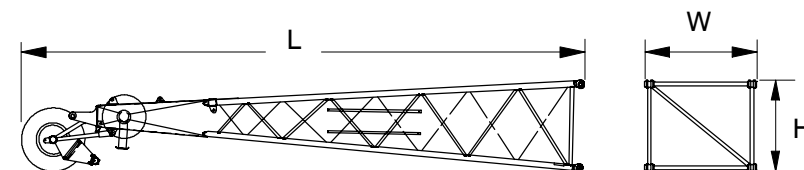
Weight: 1,650 lb (748kg)



## 15 ft (4.57m) Luffing Jib Top Section\* ①

|         |               |           |
|---------|---------------|-----------|
| Length  | 24 ft 8.25 in | (7.52m)   |
| Width   | 58.75 in      | (1.49m)   |
| Height  | 48 in         | (1.22m)   |
| Weight† | 2,800 lb      | (1 270kg) |

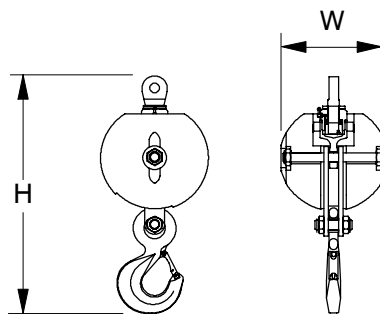
† Weight includes pendants and hardware.



## Hook Balls

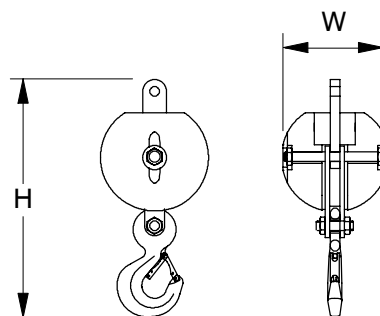
### 15 Ton (13.6mt) Swivel Hook Ball\* ①

|        |          |         |
|--------|----------|---------|
| Width  | 17.50 in | (0.44m) |
| Height | 40.50 in | (1.03m) |
| Weight | 767 lb   | (348kg) |



### 15 Ton (13.6mt) Non-Swivel Hook Ball\* ①

|        |          |         |
|--------|----------|---------|
| Width  | 18 in    | (0.46m) |
| Height | 39.50 in | (1.00m) |
| Weight | 748 lb   | (339kg) |



Number inside black circle "①" = # of components

\* - Optional equipment

# STERLING CRANE

## Hook Blocks

### 25 Ton (22.7mt)

#### 2–Sheave Hook Block\* ①

|        |          |         |
|--------|----------|---------|
| Width1 | 12.50 in | (0.32m) |
| Width2 | 22.75 in | (0.58m) |
| Width3 | 11.00 in | (0.28m) |
| Height | 40.50 in | (1.03m) |
| Weight | 466 lb   | (211kg) |

### 40 Ton (36.3mt)

#### 2–Sheave Hook Block\* ①

|        |          |         |
|--------|----------|---------|
| Width1 | 17.25 in | (0.44m) |
| Width2 | 24.75 in | (0.63m) |
| Width3 | 15.00 in | (0.38m) |
| Height | 51.50 in | (1.31m) |
| Weight | 1,395 lb | (633kg) |

### 60 Ton (54.4mt)

#### 2–Sheave Hook Block\* ①

|        |          |         |
|--------|----------|---------|
| Width1 | 16.25 in | (0.41m) |
| Width2 | 22.00 in | (0.56m) |
| Width3 | 19.50 in | (0.50m) |
| Height | 57.00 in | (1.45m) |
| Weight | 1,400 lb | (635kg) |

### 125 Ton (113.4mt)

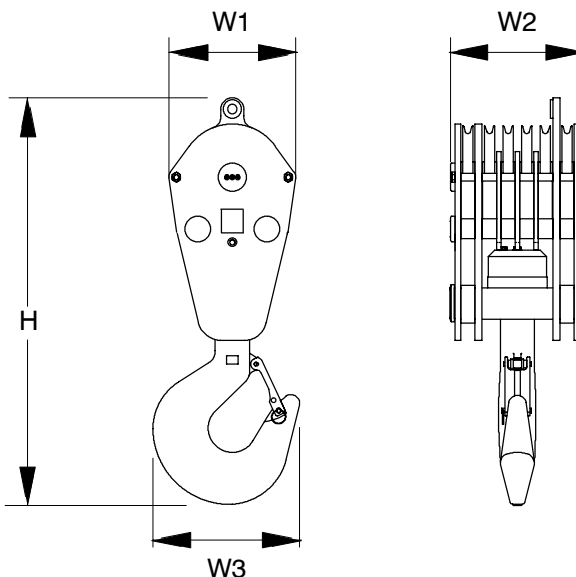
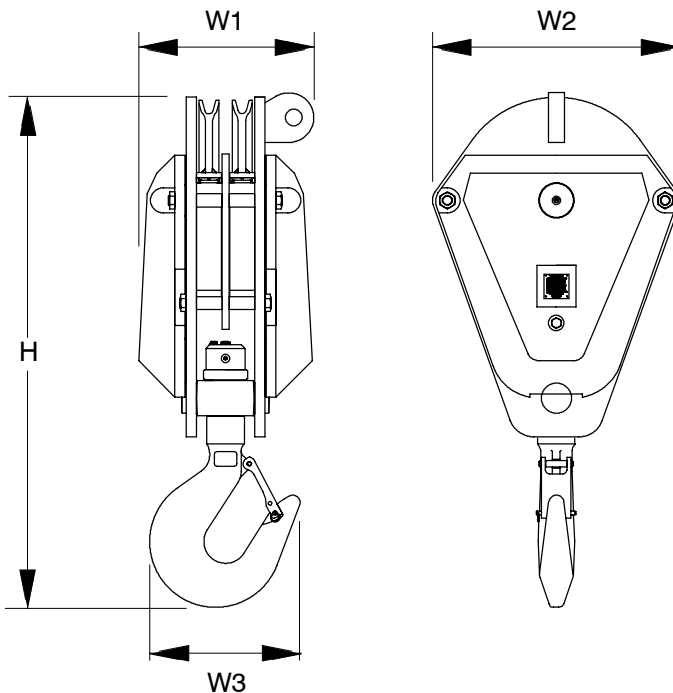
#### 6–Sheave Hook Block\* ①

|        |          |           |
|--------|----------|-----------|
| Width1 | 22.50 in | (0.57m)   |
| Width2 | 23.50 in | (0.60m)   |
| Width3 | 26.00 in | (0.66m)   |
| Height | 72.00 in | (1.83m)   |
| Weight | 2,580 lb | (1 170kg) |

### 140 Ton (127.0mt)

#### 6–Sheave Hook Block\* ①

|        |          |           |
|--------|----------|-----------|
| Width1 | 22.25 in | (0.57m)   |
| Width2 | 23.25 in | (0.59m)   |
| Width3 | 26.00 in | (0.66m)   |
| Height | 72.25 in | (1.83m)   |
| Weight | 2,340 lb | (1 061kg) |

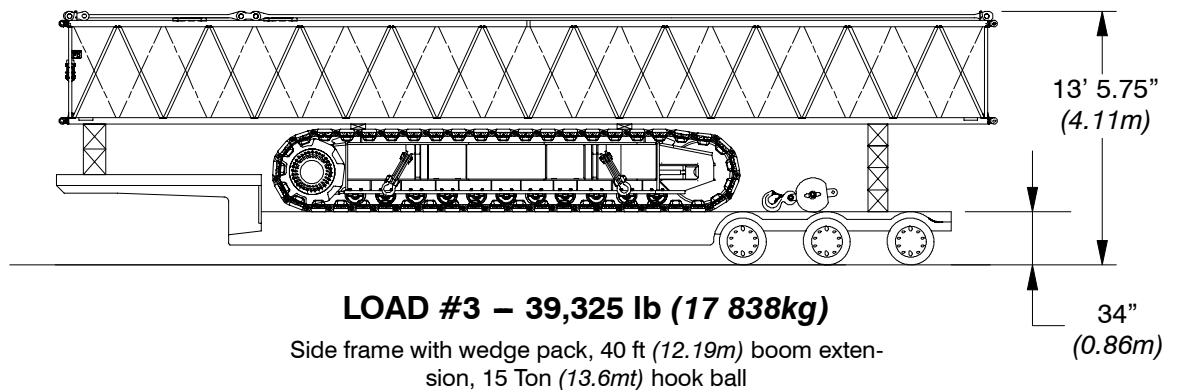
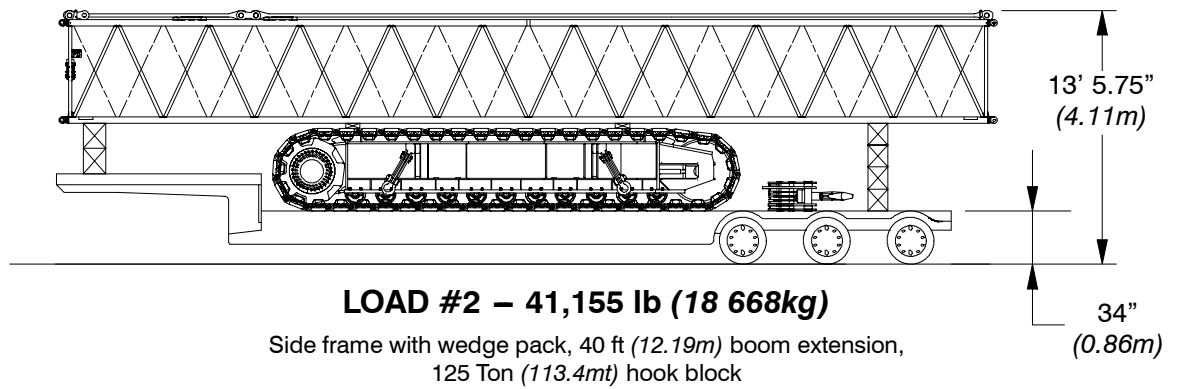
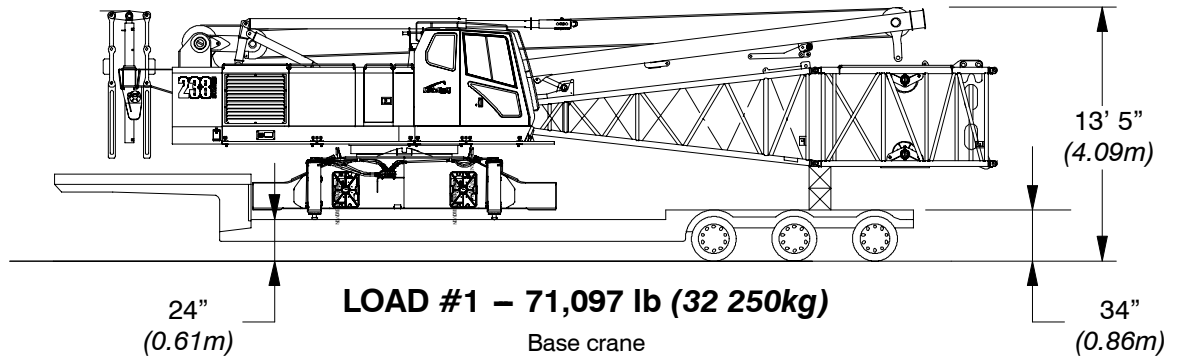


Number inside black circle “①” = # of components

\* – Optional equipment

# STERLING CRANE

## Transport Drawings



# STERLING CRANE

