





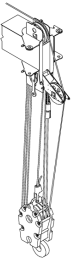





Specifications

1800 winch data

- All winch pulls and speeds are shown on the fifth layer.
- Winch line pulls would increase on the first, second, third and fourth layers.
- Winch line speed would decrease on the first, second, third and fourth layers.
- Winch line pulls may be limited by the winch capacity or the ANSI 5 to 1 cable safety factor.

			1 part line	2 part line	3 part line	4 part line	5 part line	6 part line	7 part line	8 part line
										
Standard planetary winch	Cable supplied	Average breaking strength	Lift and speed	Lift and speed	Lift and speed	Lift and speed	Lift and speed	Lift and speed	Lift and speed	Lift and speed
Low speed	5/8" diameter rotation resistant IWRC	25 583 kg (56,400 lb)	4536 kg (10,000 lb) 62 m/min (205 fpm)	9072 kg (20,000 lb) 31 m/min (103 fpm)	13 608 kg (30,000 lb) 21 m/min (68 fpm)	18 144 kg (40,000 lb) 16 m/min (51 fpm)	22 680 kg (50,000 lb) 13 m/min (41 fpm)	27 216 kg (60,000 lb) 10 m/min (34 fpm)	31 751 kg (70,000 lb) 9 m/min (29 fpm)	36 287 kg (80,000 lb) 8 m/min (26 fpm)
High speed	5/8" diameter rotation resistant IWRC	25 583 kg (56,400 lb)	2268 kg (5000 lb) 125 m/min (410 fpm)	4536 kg (10,000 lb) 62 m/min (205 fpm)	6804 kg (15,000 lb) 42 m/min (137 fpm)	9072 kg (20,000 lb) 31 m/min (103 fpm)	11 340 kg (25,000 lb) 25 m/min (82 fpm)	13 608 kg (30,000 lb) 21 m/min (68 fpm)	15 876 kg (35,000 lb) 18 m/min (59 fpm)	18 144 kg (40,000 lb) 16 m/min (51 fpm)

Winch	Full drum pull	Allowable cable pull
Standard planetary and auxiliary planetary	2268 kg (5000 lb) high speed 4536 kg (10,000 lb) low speed	5117 kg (11,280 lb) 5117 kg (11,280 lb)

Loadline deduct		
	Aux boom head	45 kg (100 lb)
5 USt	Downhaul weight	82 kg (180 lb)
15 USt	1-sheave block	170 kg (375 lb)
25 USt	2-sheave block	290 kg (640 lb)
35 USt	3-sheave block	395 kg (870 lb)
40 USt	4-sheave block	440 kg (970 lb)

THIS CHART IS ONLY A GUIDE AND SHOULD NOT BE USED TO OPERATE THE CRANE.

The individual crane's load chart, operating instructions and other instructional plates must be read and understood prior to operating the crane.

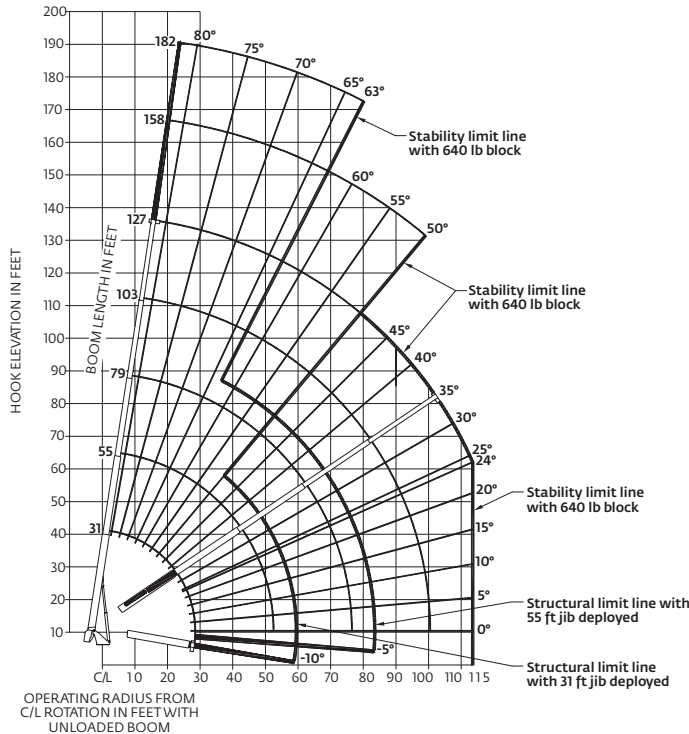
STERLING CRANE

Capacities



Series 18127: 38,71 boom with 9,45 m - 16,76 m (31 ft - 55 ft) jib/full span outrigger 7,6 m (24.7 ft)

National Crane will send you a chart on request – or you may secure needed load rating information through your nearest National Crane dealer.



Load chart

31 ft - 127 ft BOOM RATED LOADS WITHOUT JIB

LOAD RADIUS (ft)	LOADED BOOM ANGLE	31 ft BOOM (lb)	LOADED BOOM ANGLE	55 ft BOOM (lb)	LOADED BOOM ANGLE	79 ft BOOM (lb)	LOADED BOOM ANGLE	103 ft BOOM (lb)	LOADED BOOM ANGLE	127 ft BOOM (lb)
7	74.5	80,000								
8	72.4	74,000								
10	68.2	64,000								
12	63.8	56,000	76.9	40,000						
15	56.9	43,000	73.8	38,000	79.8	29,000				
20	44.2	30,000	68.1	31,000	76.2	25,000	80	16,000		
25	27.4	22,500	62	23,400	72.5	21,500	77.2	14,500	80	10,000
30			55.5	18,300	68.5	18,700	74.4	13,000	78	9,500
35			48.6	14,800	64.3	15,100	71.5	11,500	75.9	9,000
40			40.7	12,100	59.9	12,500	68.6	10,500	73.6	8,100
45			31.3	10,100	55.3	10,400	65.9	9,500	71.2	7,200
50			19.4	8,500	50.9	8,800	62.7	8,500	68.8	6,500
55					45.8	7,500	59.3	7,500	66.3	5,800
60					40.1	6,400	55.7	6,500	63.7	5,300
65					33.6	5,400	52	5,600	61.1	4,800
70					25.6	4,600	48.1	4,700	58.4	4,300
75					13.5	3,850	43.9	3,950	55.6	3,900
80							39.3	3,350	52.6	3,400
85							34.3	2,800	49.4	2,850
90							28.4	2,300	46	2,350
95							21	1,850	42.5	1,900
100							8.2	1,500	38.8	1,550
105									34.6	1,200
110									30	900
115									24.6	650
	0	19,000	0	7,700	0	3,600	0	1,450		

31 ft JIB RATED LOADS

RADIUS FULLY EXTENDED	LOADED BOOM ANGLE	RATED LOADS ALL BOOM LENGTHS
30	80	3400
46	75	3200
60	70	2700
73	65	2100
85	60	1700
96	55	1200
106	50	650

55 ft JIB RATED LOADS

RADIUS FULLY EXTENDED	LOADED BOOM ANGLE	RATED LOADS ALL BOOM LENGTHS
36	80	2200
54	75	2200
70	70	1600
85	65	1000

RATED LOAD REDUCTIONS WITH JIB

BOOM LENGTH	31 ft JIB STOWED	31 ft - 55 ft JIB ERRECTED AT 31 ft LENGTH
31 ft	Reduce load 800 lb	Reduce load 2300 lb
55 ft	Reduce load 450 lb	Reduce load 2000 lb
79 ft	Reduce load 350 lb	Reduce load 1900 lb
103 ft	Reduce load 250 lb	Reduce load 1800 lb
127 ft	Reduce load 200 lb	Reduce load 1700 lb

CAUTION:

- Do not operate crane booms, jib extensions, any accessories or loads within 3 m (10 ft) of live power lines or other conductors of electricity.
- Jib and boom capacities shown are maximum for each section.
- Do not exceed capacities at reduced radii.
- Load ratings shown on the load rating charts are maximum allowable loads with the outriggers properly extended on a firm, level surface and the crane leveled and mounted on a factory recommended truck.
- Always level the crane with the level indicator located on the crane.
- The operator must reduce load to allow for factors such as wind, ground conditions, operating speeds and their effects on freely suspended loads.
- Overloading this crane may cause structural collapse or instability.
- Weights on any accessories attached to the boom or loadline must be deducted from the load chart capacities.
- Do not exceed jib capacities at any reduced boom lengths.
- Do not deadhead lineblock against boom tip when extending boom or winching up.
- Keep at least three wraps of loadline on drum at all times.
- Use only specified cable with this machine.

NOTE:

- Operate with jib by radius when main boom is fully extended. If necessary increase boom angle to maintain loaded radius.
- Operate with jib by boom angle when main boom is not fully extended. Do not exceed rated jib capacities at any reduced boom lengths.
- Capacities do not exceed 85% stability.
- Shaded areas are structurally limited capacities.

NOTE:

- All capacities are in pounds, angles in degrees, radius in feet.
- Loaded boom angles are given as reference only.
- Shaded areas are structurally limited capacities.

THIS CHART IS ONLY A GUIDE AND SHOULD NOT BE USED TO OPERATE THE CRANE.

The individual crane's load chart, operating instructions and other instructional plates must be read and understood prior to operating the crane.

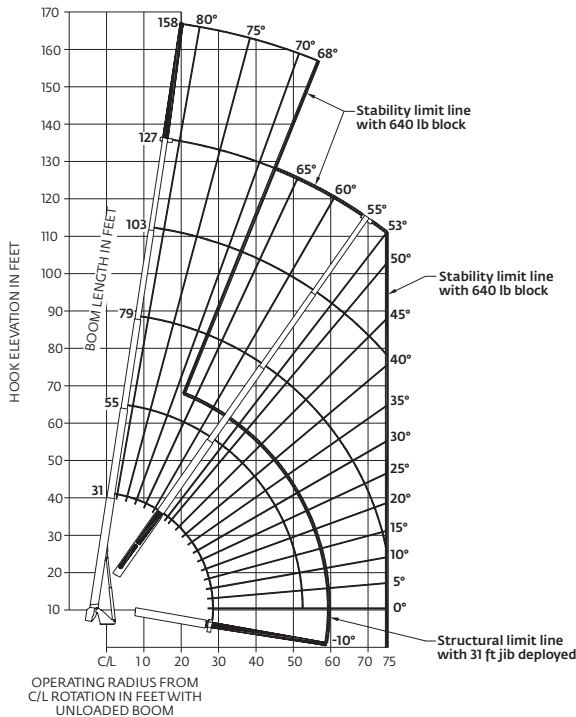
STERLING CRANE

Capacities



Series 18127: 38,71 m boom with 9,45 m (31 ft) jib/mid span outrigger 5,4 m (17.5 ft)

National Crane will send you a chart on request – or you may secure needed load rating information through your nearest National Crane dealer.



CAUTION:

- Do not operate crane booms, jib extensions, any accessories or loads within 3 m (10 ft) of live power lines or other conductors of electricity.
- Jib and boom capacities shown are maximum for each section.
- Do not exceed capacities at reduced radii.
- Load ratings shown on the load rating charts are maximum allowable loads with the outriggers properly extended on a firm, level surface and the crane leveled and mounted on a factory recommended truck.
- Always level the crane with the level indicator located on the crane.
- The operator must reduce load to allow for factors such as wind, ground conditions, operating speeds and their effects on freely suspended loads.
- Overloading this crane may cause structural collapse or instability.
- Weights on any accessories attached to the boom or loadline must be deducted from the load chart capacities.
- Do not exceed jib capacities at any reduced boom lengths.
- Do not deadhead lineblock against boom tip when extending boom or winching up.
- Keep at least three wraps of loadline on drum at all times.
- Use only specified cable with this machine.

Load chart

31 ft - 127 ft BOOM RATED LOADS WITHOUT JIB

LOAD RADIUS (ft)	LOADED BOOM ANGLE	31 ft BOOM (lb)	LOADED BOOM ANGLE	55 ft BOOM (lb)	LOADED BOOM ANGLE	79 ft BOOM (lb)	LOADED BOOM ANGLE	103 ft BOOM (lb)	LOADED BOOM ANGLE	127 ft BOOM (lb)
7	74.5	80,000								
8	72.4	74,000								
10	68.2	64,000								
12	63.9	56,000	76.9	40,000						
15	57	43,000	73.8	38,000	79.8	29,000				
20	44.2	27,700	67.8	27,000	76.2	25,000	80	16,000		
25	27.4	17,500	61.6	17,200	71.9	17,600	77.2	14,500	80	10,000
30			55	12,000	67.7	12,300	74.3	12,400	78	9500
35			48.7	8700	63.7	9100	71.3	9200	75.9	9000
40			41	6500	59.4	6900	68	7000	73.2	7100
45			31.8	4900	54.8	5200	64.7	5300	70.5	5400
50			18.7	3700	50	4000	61.3	4100	67.8	4150
55					44.8	3050	57.9	3150	65.1	3200
60					39.1	2250	54.4	2350	62.4	2400
65					32.7	1600	50.7	1700	59.7	1750
70					24.6	1050	46.8	1150	56.9	1200
	0	12,400	0	3150						

NOTE:

- Operate with jib by radius when main boom is fully extended. If necessary increase boom angle to maintain loaded radius.
- Operate with jib by boom angle when main boom is not fully extended. Do not exceed rated jib capacities at any reduced boom lengths.
- Capacities do not exceed 85% stability.
- Shaded areas are structurally limited capacities.

NOTE:

- All capacities are in pounds, angles in degrees, radius in feet.
- Loaded boom angles are given as reference only.
- Shaded areas are structurally limited capacities.

31 ft JIB RATED LOADS		
RADIUS FULLY EXTENDED	LOADED BOOM ANGLE	RATED LOADS ALL BOOM LENGTHS
30 ft	80	3400
46 ft	75	3200
58 ft	70	900

RATED LOAD REDUCTIONS WITH JIB		
BOOM LENGTH	31 ft JIB STOWED	31 ft JIB ERECTED
31 ft	Reduce load 800 lb	Reduce load 2300 lb
55 ft	Reduce load 450 lb	Reduce load 2000 lb
79 ft	Reduce load 350 lb	Reduce load 1900 lb
103 ft	Reduce load 250 lb	Reduce load 1800 lb
127 ft	Reduce load 200 lb	Reduce load 1700 lb

THIS CHART IS ONLY A GUIDE AND SHOULD NOT BE USED TO OPERATE THE CRANE.

The individual crane's load chart, operating instructions and other instructional plates must be read and understood prior to operating the crane.